

IHSG

3.622,0 -107,0 -2,87%

Ulisan Pasar



Euforia sentimen negatif pelemahan bursa Asia serta aksi profit taking pada sejumlah saham unggulan maupun favorit, mengakibatkan perdagangan IHSG kemarin ditutup melemah -2,87% dengan pada level 3.622. Mencoba bertahan pada area support positif 3.620/3.580.

Pada saat yang bersamaan, para pelaku asing mencatatkan nilai penjualan bersih sebesar Rp33,050miliar.

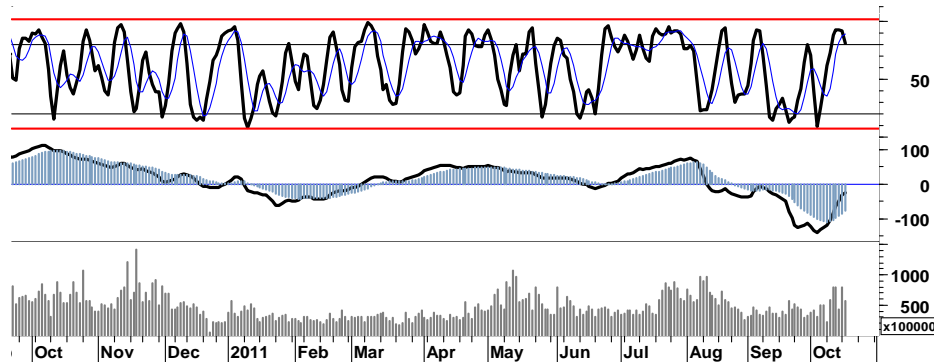
Pergerakan indeks pada bursa-bursa utama Eropa mengakhiri perdagangan kemarin dengan ditutup bervariasi dimana CAC melemah sebesar -0,8%, sementara DAX mencoba untuk keluar dari teritori negatif dengan membukukan penguatan tipis sebesar 0,3%. Pada kesempatan lain, DJI, NASDAQ dan S&P500 membukukan penguatan masing-masing sebesar 1,6%, 1,6% dan 2,0%.

Pergerakan pada daerah overbought, mengindikasikan IHSG masih rawan koreksi. Apabila pada perdagangan hari ini IHSG

mengawali perdagangan dengan dibuka di atas support 3.580-3.620 serta memiliki kecenderungan untuk bertahan pada area tersebut, maka IHSG memiliki peluang untuk bergerak pada area positif 3.625 - 3.750.

Namun demikian waspadai potensi gagalnya IHSG dalam melakukan penetrasi resistensi 3.650. Dengan demikian peluang IHSG untuk mencapai target resistensi retracement 61,8% di 3.824 akan membawa IHSG kembali menguji support 3.580 - 3.520.

Dilain sisi, memasuki 'Earnings Seasons 9M11' diharapkan mampu menunda derasnya aksi jual ataupun profit taking.



S1	S2	R1	R2
3,560	3,500	3,705	3,790

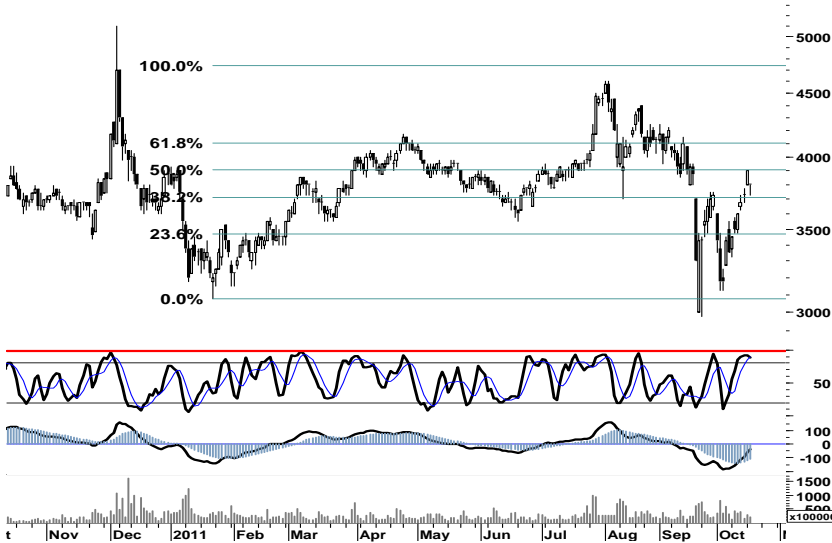
Saham Pilihan

Saham	Harga (Rp)	Rekomendasi	Stochastic	RSI	BB Top	BB Bottom	S1	S2	R1	R2
BBNI	3,800	Trading	88.46	54.01	4,000	3,600	3,750	3,700	3,850	3,900
GGRM	56,100	OverSold	26.81	54.29	60,800	53,300	54,750	53,400	57,500	58,850
JSMR	3,675	OverSold	37.04	42.32	3,900	3,650	3,625	3,575	3,825	3,875
MAPI	4,800	Trading	70.48	58.14	5,250	4,475	4,700	4,600	5,000	5,100
TLKM	7,150	OverSold	22.73	43.81	7,350	7,000	7,050	6,950	7,250	7,350
UNVR	15,700	OverSold	26.92	46.90	16,050	15,350	15,400	15,100	16,100	16,400

BBNI

3,800

Trading



Arus distribusi yang mencoba keluar dari area negatif, diharapkan mampu menunda tekanan pelemahan terhadap BBNI menguji celah support yang terbuka di 3.600.

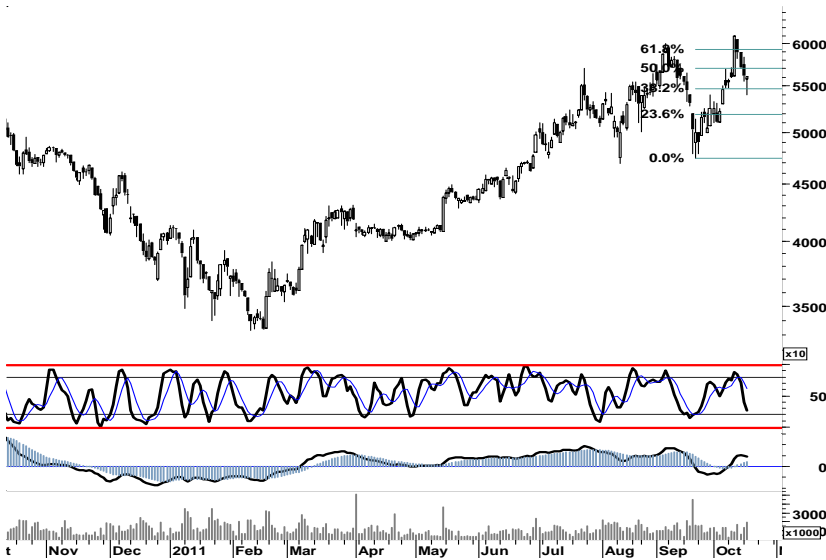
Euforia positif pasar berpotensi memberikan ruang bagi BBNI untuk bergerak dalam interval harga 3.750 - 3.900.

S1	S2	R1	R2
3,750	3,700	3,850	3,900

GGRM

56,100

OverSold



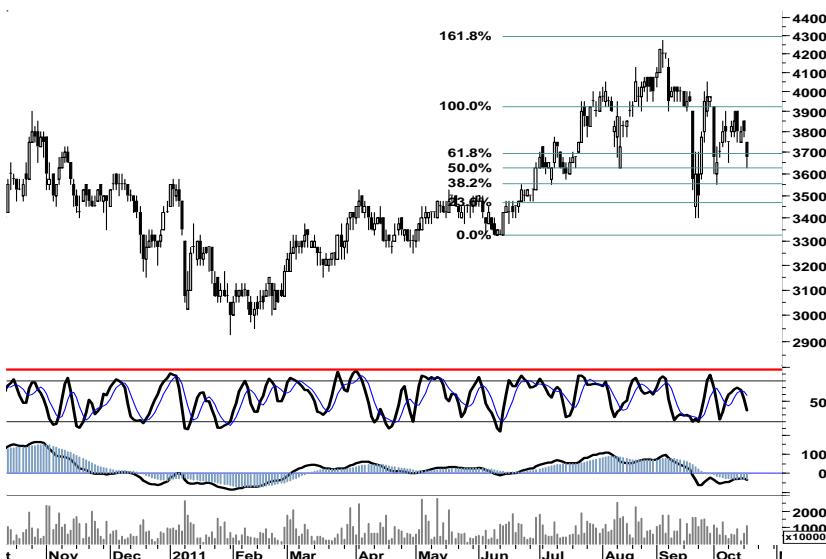
Tertahan pada area trading serta perlawanan aksi beli yang terjadi kemarin, membuka peluang bagi GGRM untuk melakukan technical rebound pada area oversold dengan melakukan pergerakan dalam kisaran harga 56.000 - 57.500.

S1	S2	R1	R2
54,750	53,400	57,500	58,850

JSMR

3,675

OverSold



Tertahan pada area pivot support, mengakibatkan JSMR berada dalam kondisi berimbang.

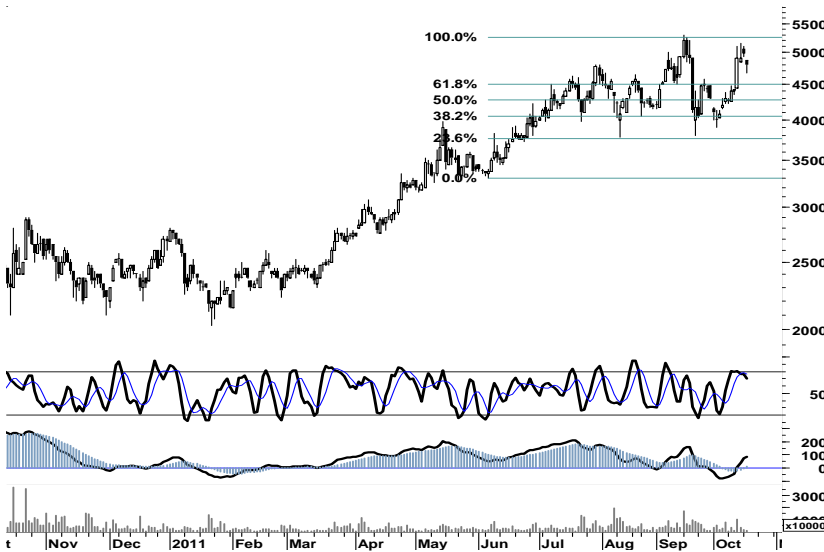
Celah support 3.750 - 3.775 merupakan peluang bagi JSMR untuk memanfaatkan swing positif dalam interval 3.625 - 3.825.

S1	S2	R1	R2
3,625	3,575	3,825	3,875

MAPI

4,800

Trading



Dengan tetap mewaspadai potensi berlanjutnya tekanan pada MAPI dengan target support retracement 50% di level 4.250.

Celah resistensi serta arah positif dari beberapa lagging indicator, masih membuka kesempatan bagi MAPI untuk mencapai target double bottom pada resistensi harga 5.400 - 5.500.

S1	S2	R1	R2
4,700	4,600	5,000	5,100

TLKM

7,150

OverSold



Defensive Support 7.100 diharapkan mampu mendukung signal positif yang muncul sebagai akibat perlawanan aksi beli kemarin, untuk memberikan ruang bagi TLKM bergerak menguji resistensi 7.350.

S1	S2	R1	R2
7,050	6,950	7,250	7,350

UNVR

15,700

OverSold



Signal positif yang muncul pada leading indicator membuka peluang bagi UNVR untuk melakukan penetrasi resisten pada retracement 38% di level 15.800, selanjutnya bergerak pada area positif 15.700 - 16.150.

S1	S2	R1	R2
15,400	15,100	16,100	16,400

TRADE DATA

JCI (IHSG) 3,622.0 -107.0 -2.87%

YTD (Rp)	-2.2%	Volume (m) :	5,588
YTD (USD)	-0.9%	Nilai (Rpbn) :	3,328
Moving Avg 20day	3,499	Mkt Cap (Rptr) :	3,439
Moving Avg 50day	3,740	Market P/E (x) :	16.2
Moving Avg 200day	3,718	Market Div. Yield (%) :	2.4

Indonesia & Sectors +/- (%) YTD (%)

MSCI Indonesia	4,517.6	-136.2	-2.93	-0.64
JII	505.4	-12.3	-2.37	-5.17
LQ45	641.2	-19.9	-3.01	-3.05
JAKFIN Index	483.1	-18.4	-0.04	3.52
JAKINFR Index	672.7	-10.8	-0.02	-17.88
JAKMINE Index	2,567.7	-134.8	-0.05	-21.58
JAKCONS Index	1,215.3	-10.4	-0.01	11.02
JAKTRAD Index	504.6	-9.5	-0.02	6.44
JAKMIND Index	1,216.0	-22.7	-0.02	25.75
JAKBIND Index	370.1	-13.9	-0.04	-4.44
JAKPROP Index	212.2	-8.5	-0.04	4.46
JAKAGRI Index	1,977.0	-75.0	-0.04	-13.45

Commodities +/- (%) YTD (%)

CRB Index	314.91	0.4	0.11	-5.38
Oil & Gas				
Crude Oil	88.34	2.0	2.27	-3.33
Natural Gas	3.55	-0.1	-3.66	-19.34
COAL (Rotterdam)	115.45	-2.0	-1.70	-12.14
COAL (Amsterdam)	116.75	-1.0	-0.82	-7.30
COAL (Australia,wk)	120.15	0.0	0.00	-1.84
Industrial Metals				
Alumunium	2,195.50	-8.0	-0.36	-10.72
Nickel	19,150	175	0.92	-22.63
Tin	21,345	-150	-0.70	-20.65
Prescious Metal				
Gold	1,652.80	-23.8	-1.42	16.28
Silver	31.83	0.0	0.03	2.98
Soft Commodities				
CPO (Malaysia)	2,819.00	-45.0	-1.57	-26.09
CPO (Netherlands)	985.00	-25.0	-2.48	-23.35
Rubber	3,998.96	-90.6	-2.22	-19.92
Corn	644.00	3.5	0.55	2.38
Wheat	625.25	1.0	0.16	-21.28
Soybeans	1,250.75	-2.3	-0.18	-10.26
Rice (Indonesia)	7,700.00	0.0	0.00	8.45

Winners

Stock	Price	(%)	Stock	Price	(%)
GSMF	102	20.00	BUMI	2,025	-7.95
PTIS	700	12.90	INCO	3,225	-7.19
SOBI	2,300	9.52	BMRI	6,400	-5.19
FPNI	154	6.21	INDF	5,300	-4.50
EPMT	780	4.00	BBRI	6,400	-4.48
APIC	445	3.49	SMGR	8,550	-4.47
MIDI	470	3.30	BDMN	4,925	-4.37
UNVR	15,700	1.62	ADRO	1,880	-4.08
SCMA	5,600	0.90	BBCA	7,750	-3.73
TLKM	7,150	0.70	ASII	68,050	-1.38

Losers

Stock	Price	(%)	Stock	Price	(%)
BUMI	2,025	-7.95	BKSL	1,634,626	
INCO	3,225	-7.19	ENRG	1,610,488	
BMRI	6,400	-5.19	KIJA	741,627	
INDF	5,300	-4.50	ELTY	710,308	
BBRI	6,400	-4.48	BNBR	540,703	
SMGR	8,550	-4.47	BUMI	390,367	
BDMN	4,925	-4.37	ASRI	384,576	
ADRO	1,880	-4.08	STAR	3,065	
BBCA	7,750	-3.73	BMRI	2,730	
ASII	68,050	-1.38	ASRI	2,348	
			BORN	2,288	

Regional Indices +/- (%) YTD (%)

MXWO	MSCI Word	1,177.5	5.7	0.49	-8.01
SPX	S&P 500	1,225.4	24.5	2.04	-2.57
US					
Dow Jones Industrial		11,577.1	180.0	1.58	-0.00
Nasdaq	US	2,657.4	42.5	1.63	0.17
Europe					
EURO 50	Europe	235.3	-0.9	-0.38	-14.68
FTSE	London	5,410.4	-26.3	-0.48	-8.30
DAX	German	5,877.4	18.0	0.31	-14.99
CAC	France	3,141.1	-25.0	-0.79	-17.44
SMI	Swiss	5,682.5	-40.9	-0.71	-11.71
BRIC					
BOVESPA	Brazil	55,031.9	1,120.6	2.08	-20.59
MICEX	Russia	1,425.2	22.2	1.58	-15.57
SENSEX	India	16,748.3	-276.8	-1.63	-18.34
NIFTY	India	5,037.5	-80.8	-1.58	-17.88
SHCOMP	China	2,383.5	-56.9	-2.33	-15.12
SZCOMP	China	1,010.5	-30.3	-2.92	-21.72

Developed ASIA

Nikkei	Japan	8,741.9	-137.7	-1.55	-14.54
TPX	Japan	751.2	-10.6	-1.40	-16.42
HIS	Hong kong	18,076.5	-797.5	-4.23	-21.53
KOSPI	S.Korea	1,838.9	-26.3	-1.41	-10.34
TAIEX	Taiwan	7,359.5	-101.6	-1.36	-17.98
FSSTI	Singapore	2,724.7	-54.3	-1.95	-14.59

ASEAN

SET	Thailand	952.8	-18.9	-1.94	-7.75
PCOMP	Philippines	4,157.3	-57.2	-1.36	-1.04
KLCI	Malaysia	1,439.9	-25.4	-1.73	-5.20
VNINDEX	Vietnam	404.3	-6.5	-1.59	-16.58

Currency +/- (%) YTD (%)

EURUSD	Euro	1.375	0.001	0.10	2.75
GBPUSD	United Kingdom	1.571	-0.003	-0.20	0.65
USDCHF	Switzerland	0.899	-0.001	-0.07	-3.90
USDCAD	Canada	1.014	-0.009	-0.91	1.61
AUDUSD	Australia	1.026	0.011	1.04	0.29
NZDUSD	New Zealand	0.796	0.004	0.51	1.97
USDJPY	Japan	76.8	-0.010	-0.01	-5.30
USDCNY	China	6.380	0.010	0.16	-3.43
USDHKD	Hongkong	7.777	-0.001	-0.02	0.05
USDSGD	Singapore	1.266	-0.008	-0.60	-1.33
Rupiah	Indonesia	8,884.0	66.000	0.75	-1.24

Value

Value (Rpbn)	Volume (Lot)	Freq (x)
BUMI 397,674	BKSL 1,634,626	BKSL 5,522
BMRI 259,326	ENRG 1,610,488	ENRG 5,406
BKSL 237,161	KIJA 741,627	BUMI 4,931
ASII 227,842	ELTY 710,308	TMPI 4,151
BBRI 195,116	BNBR 540,703	KIJA 3,883
ENRG 129,947	BUMI 390,367	BBRI 3,090
TLKM 124,710	ASRI 384,576	STAR 3,065
ADRO 120,182	DEWA 381,510	BMRI 2,730
GGRM 107,541	CFIN 199,770	ASRI 2,348
BBCA 96,029	STAR 175,778	BORN 2,288

Code	Last	Ytd Chg(%)	H-5 Chg (%)	Rekomendasi	STO	RSI	MACD	Bollinger Band		Support			Resistance			H-5	
								Top	Bottom	1	2	3	1	2	3	Highest	Lowest
AALI	19,000	-29.10	11.76	StrongSell	87.3	48.3	(603.6)	19,950	18,100	18,700	18,350	18,200	19,200	19,350	19,700	19,600	16,900
ACES	3,375	18.42	-0.74	Trading	33.3	55.0	41.6	3,450	3,375	3,375	3,375	3,350	3,400	3,425	3,425	3,475	3,375
ADRO	1,880	-29.72	5.62	StrongSell	86.1	52.1	(23.3)	1,980	1,830	1,850	1,820	1,780	1,920	1,960	1,990	1,960	1,720
AISA	650	-16.67	-4.41	Trading	53.8	43.1	(11.6)	695	650	640	625	610	670	685	700	690	640
ANTM	1,660	-32.93	9.93	OverBought	76.0	52.4	(27.3)	1,790	1,570	1,630	1,590	1,540	1,720	1,770	1,810	1,790	1,510
ASII	68,050	25.09	3.26	Trading	87.3	57.9	665.4	70,050	65,850	67,250	66,450	65,950	68,550	69,050	69,850	69,000	63,900
BBCA	7,750	20.16	0.00	OverBought	63.2	49.4	7.4	8,150	7,750	7,650	7,500	7,350	7,950	8,100	8,250	8,150	7,600
BBNI	3,800	0.00	8.57	Trading	88.5	54.0	(38.4)	4,000	3,600	3,750	3,700	3,675	3,825	3,850	3,900	3,900	3,475
BBRI	6,400	23.67	2.40	OverBought	75.6	54.9	74.1	6,750	6,350	6,300	6,200	6,050	6,550	6,700	6,800	6,750	6,150
BDMN	4,925	-10.45	9.44	StrongSell	80.8	54.6	12.0	5,300	4,775	4,850	4,775	4,700	5,000	5,075	5,150	5,200	4,425
BISI	980	-47.59	8.89	OverBought	64.6	44.7	(44.3)	1,030	955	960	940	920	1,000	1,020	1,040	1,050	890
BMRI	6,400	-0.78	-0.78	OverBought	62.9	50.0	1.2	6,850	6,400	6,300	6,150	6,000	6,600	6,750	6,900	6,800	6,300
BSDE	900	2.27	7.14	OverBought	79.5	52.8	(5.0)	960	870	880	860	840	920	940	960	950	820
BTEL	290	23.40	0.00	Trading	58.3	32.4	(13.1)	301	289	280	270	260	300	310	320	305	280
BUMI	2,025	-35.20	2.27	Trading	57.1	42.7	(94.4)	2,300	2,000	1,975	1,925	1,850	2,100	2,175	2,225	2,350	1,960
BWPT	1,110	-15.27	13.27	StrongSell	92.9	55.9	(19.0)	1,180	1,020	1,100	1,080	1,070	1,130	1,140	1,160	1,130	970
ELTY	114	-29.19	6.54	OverBought	69.7	45.5	(4.3)	126	112	112	109	105	119	123	126	126	103
EXCL	5,150	-1.90	4.04	OverBought	61.8	53.4	30.6	5,450	5,050	5,100	5,050	5,000	5,200	5,250	5,300	5,450	4,850
GGRM	56,100	36.66	0.18	OverSold	26.8	54.3	928.9	60,800	53,300	54,750	53,400	52,700	56,800	57,500	58,850	61,000	54,050
HEXA	7,350	1.38	1.38	OverSold	39.1	47.6	(105.4)	7,400	7,350	7,250	7,150	7,100	7,400	7,450	7,550	7,600	7,200
HRUM	7,450	-21.16	2.05	OverBought	70.5	48.5	(76.7)	8,050	7,400	7,300	7,150	6,900	7,700	7,950	8,100	8,000	7,100
INCO	3,225	-35.18	5.74	OverBought	69.8	50.4	(69.6)	3,525	3,000	3,175	3,100	3,000	3,350	3,450	3,525	3,475	2,975
INDF	5,300	7.07	2.91	OverBought	68.7	50.5	(39.3)	5,700	5,250	5,150	5,000	4,850	5,450	5,600	5,750	5,700	5,050
INDY	2,625	-48.53	10.53	StrongSell	81.8	49.7	(70.2)	2,900	2,450	2,575	2,525	2,425	2,725	2,825	2,875	2,850	2,350
INTP	14,300	-10.90	5.15	OverBought	74.8	54.5	159.2	15,100	14,250	14,100	13,900	13,600	14,600	14,900	15,100	15,150	13,250
ISAT	4,850	-11.01	0.52	Trading	47.4	38.7	(157.4)	5,050	4,825	4,825	4,775	4,750	4,900	4,925	4,975	5,100	4,800
ITMG	41,800	-23.02	5.56	OverBought	79.2	52.3	(215.9)	43,650	41,000	41,200	40,600	39,800	42,600	43,400	44,000	43,450	38,500
JSMR	3,675	3.52	-3.92	OverSold	37.0	42.3	(34.8)	3,900	3,650	3,625	3,575	3,500	3,750	3,825	3,875	3,900	3,625
KLBF	3,350	0.75	-1.47	OverSold	25.0	51.9	20.5	3,500	3,300	3,325	3,300	3,275	3,375	3,400	3,425	3,550	3,300
LSIP	2,000	-21.26	2.56	Trading	55.5	48.4	(37.5)	2,110	1,980	1,990	1,970	1,940	2,040	2,070	2,090	2,175	1,930
MAPI	4,800	72.97	9.09	Trading	70.5	58.1	87.3	5,250	4,475	4,700	4,600	4,500	4,900	5,000	5,100	5,150	4,250
PGAS	2,675	-40.22	1.90	OverBought	60.0	49.3	(30.1)	2,775	2,650	2,650	2,600	2,575	2,725	2,750	2,800	2,800	2,575
PTBA	17,000	-29.02	12.58	Trading	87.7	52.4	(247.9)	18,300	16,200	16,700	16,350	16,000	17,400	17,750	18,100	17,750	14,300
RALS	670	-22.09	-5.63	Trading Sell	33.3	39.1	(20.1)	710	650	20,870	20,870	20,870	20,870	20,870	20,870	720	650
SGRO	2,900	-10.77	6.42	StrongSell	87.8	48.3	(88.5)	3,075	2,800	2,850	2,800	2,700	3,000	3,100	3,150	3,025	2,675
SMCB	1,860	-16.40	7.51	Trading	84.4	53.2	(12.3)	1,990	1,750	1,830	1,800	1,770	1,890	1,920	1,950	1,940	1,720
SMGR	8,550	-13.20	7.55	Trading	82.9	52.4	(3.6)	9,250	8,250	8,450	8,350	8,200	8,700	8,850	8,950	9,050	7,900
SMRA	1,120	3.70	7.69	Trading	83.3	54.3	(14.5)	1,200	1,060	1,090	1,060	1,040	1,140	1,160	1,190	1,170	1,030
TINS	1,830	-35.79	10.24	Trading	86.6	48.7	(56.9)	1,940	1,770	1,810	1,780	1,750	1,870	1,900	1,930	1,920	1,640
TLKM	7,150	-10.63	-2.05	OverSold	22.7	43.8	(59.4)	7,350	7,000	7,050	6,950	6,900	7,200	7,250	7,350	7,400	7,000
UNTR	23,100	-4.94	7.44	Trading	81.7	56.4	27.8	23,900	22,550	22,700	22,300	22,100	23,300	23,500	23,900	23,900	21,100
UNVR	15,700	-2.18	0.96	OverSold	26.9	46.9	(151.5)	16,050	15,350	15,400	15,100	14,900	15,900	16,100	16,400	16,250	15,250

S1 = Support 1 S2 = Support 2 S3 = Support 3
 R1 = Resisten 1 R2 = Resisten 2 R2 = Resisten 2
 STO = Stochastic Oscillator
 RSI = Relative Strength Index
 MACD = Moving Average Convergence Divergence
 H-5 = 5 hari sebelumnya

RESEARCH TEAM

Andrian Tanuwijaya	Equity Analyst	(andrian.tanuwijaya@trimegah.com)
Hanel Topada Era Tania	Equity Analyst	(hanel.tania@trimegah.com)
Paul Raymond Widjaja	Equity Analyst	(paul.widjaja@trimegah.com)
Michele Gabriela	Equity Analyst	(michele.gabriela@trimegah.com)
T Hedy Arifien	Technical Analyst	(hedy@trimegah.com)
Rovandi	Research Assistant	(rovandi@trimegah.com)

EQUITY CAPITAL MARKET TEAM

Nathanael Benny Prasetyo	Head of Retail ECM	(benny.prasetyo@trimegah.com)
Windra Djulnaily	Pluit, Jakarta	(windra.djulnaily@trimegah.com)
Ariawan Anwar	Artha Graha, Jakarta	(ariawan.anwar@trimegah.com)
Ferry Zabur	Kelapa Gading, Jakarta	(ferry.zabur@trimegah.com)
Wirjawan Joesoef	Mangga Dua, Jakarta	(iwan@trimegah.com)
Lukman Abdul Azis	Kebon Jeruk, Jakarta	(lukman@trimegah.com)
Untung Wijaya	Semarang, Jawa Tengah	(untung.wijaya@trimegah.com)
Sonny Muljadi	Surabaya, Jawa Timur	(sonny.muljadi@trimegah.com)
Ni luh Ketut Sri Agustini	Denpasar, Bali	(sri.agustini@trimegah.com)
Philip Fernando Suwandi	Makassar, Sulawesi Selatan	(philip.fs@trimegah.com)
agus.jatmiko	Balikpapan, Kalimantan Timur	(agus.jatmiko@trimegah.com)
Asep Saepudin	Bandung, Jawa Barat	(asep.saepudin@trimegah.com)
Ariffianto	Cirebon, Jawa Barat	(ariffianto@trimegah.com)
Very Wijaya	Medan, Sumatera Utara	(very.wijaya@trimegah.com)
Tantie Rivi Watie	Pekanbaru, Riau	(tantierw@trimegah.com)
Agus Bambang Suseno	Solo, Jawa Tengah	(agus.suseno@trimegah.com)
Untung Wijaya	Yogyakarta, Jawa Tengah	(untung.wijaya@trimegah.com)
Donny Kristanto Setiadi	Palembang, Sumatra Selatan	(donny.kristanto@trimegah.com)
Rr. Putri Ayu Erikusuma	Malang, Jawa Timur	(putri.ayu@trimegah.com)

PT Trimegah Securities Tbk
18th Fl, Artha Graha Building
Jl. Jend. Sudirman Kav. 52-53
Jakarta 12190, INDONESIA
Tel : (6221) 2924 9088 Fax : (6221) 2924 9163

DISCLAIMER

This report has been prepared by PT Trimegah Securities Tbk on behalf of itself and its affiliated companies and is provided for information purposes only. Under no circumstances is it to be used or considered as an offer to sell, or a solicitation of any offer to buy. This report has been produced independently and the forecasts, opinions and expectations contained herein are entirely those of Trimegah Securities.

While all reasonable care has been taken to ensure that information contained herein is not untrue or misleading at the time of publication, Trimegah Securities makes no representation as to its accuracy or completeness and it should not be relied upon as such. This report is provided solely for the information of clients of Trimegah Securities who are expected to make their own investment decisions without reliance on this report. Neither Trimegah Securities nor any officer or employee of Trimegah Securities accept any liability whatsoever for any direct or consequential loss arising from any use of this report or its contents. Trimegah Securities and/or persons connected with it may have acted upon or used the information herein contained, or the research or analysis on which it is based, before publication. Trimegah Securities may in future participate in an offering of the company's equity securities.