

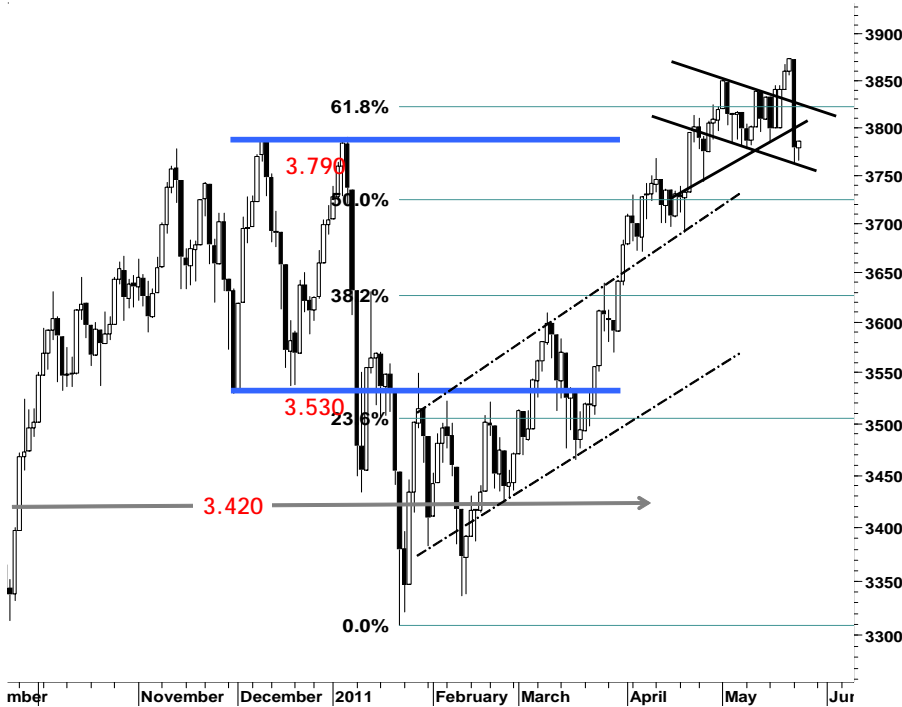
IHSG

3.785,9

7,5

0,20%

Ulisan Pasar



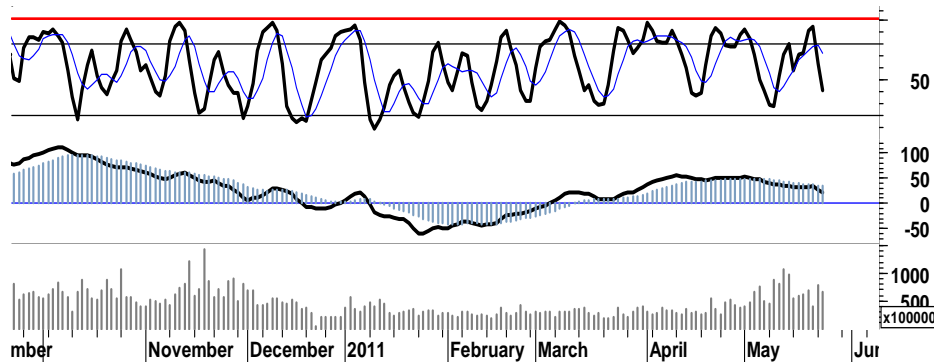
Dibayang-bayangi oleh kekhawatiran akan prospek pertumbuhan ekonomi di Eropa dan Amerika Serikat IHSG mengawali perdagangan dengan pelemahan menguji arah support 3.750, setelah kemudian ditutup menguat tipis 0,2% di level 3.786 mencoba untuk bertahan pada zona hijau perdagangan. Namun para pelaku asing kemarin justru membukukan nilai penjualan bersih sebesar Rp434miliar, yang cenderung menekan laju penguatan mendekati trend support harga di level 3.760.

Melemahnya signal pembalikan arah ataupun penguatan pada IHSG, tercermin pada kecenderungan arah pergerakan leading indicator maupun lagging indicator yang menuju selatan mencoba merambah area oversold.

Diharapkan dengan kembali melonjaknya harga minyak dunia mampu memberikan dorongan sentimen positif terhadap sektor komoditas dan pertambangan, yang selanjutnya membuka

peluang bagi IHSG untuk mengayun positif menguji penetrasi resistensi 3.790. Dengan demikian memberikan ruang bagi para pelaku pasar untuk melakukan aksi jual yang tertinggal, pada saat IHSG menguji area 3.800 - 3.815.

S1	S2	R1	R2
3,775	3,760	3,790	3,800



Saham Pilihan

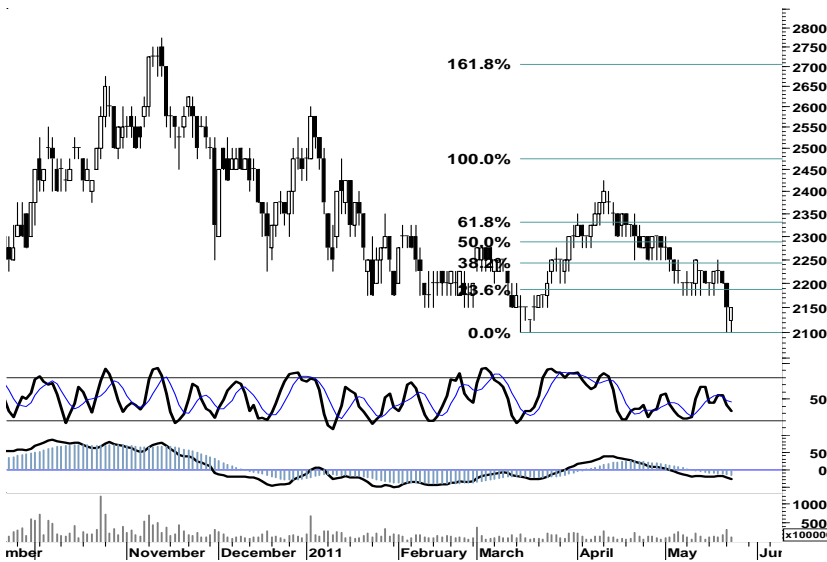
Saham	Harga (Rp)	Rekomendasi	Stochastic	RSI	BB Top	BB Bottom	S1	S2	R1	R2
ADRO	2,325	OverBought	68.18	53.46	2,400	2,300	2,300	2,275	2,375	2,400
ANTM	2,150	Accumulate	33.33	35.87	2,250	2,125	2,125	2,100	2,200	2,225
BUMI	3,350	OverSold	22.73	43.61	3,600	3,275	3,325	3,300	3,450	3,475
INCO	4,850	Trading	52.38	49.71	4,950	4,775	4,800	4,750	4,900	4,950
ITMG	46,700	StrongSell	80.25	48.21	47,750	45,450	46,150	45,600	47,600	48,150
PTBA	21,250	OverBought	60.98	44.70	21,350	20,850	21,000	20,700	21,600	21,900



Spekulasi Trading dapat dilakukan dengan memanfaatkan peluang yang terbuka pada ADRO menguji melengkapi siklus di fibonacci 100% di level 2.350.

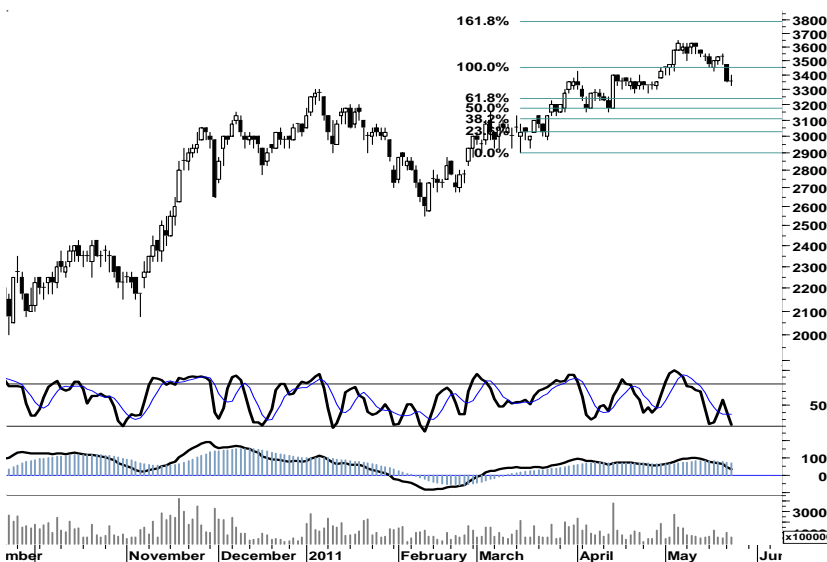
Namun demikian waspadai potensi berlanjutnya tekanan kembali, apabila ADRO gagal melaju menuju resistensi 2.375

S1	S2	R1	R2
2,300	2,275	2,375	2,400



Spekulasi akumulasi dengan basis support 2.100, diharapkan dapat mendorong ANTM keluar dari bearish area dengan melakukan penetrasi resistensi 2.200.

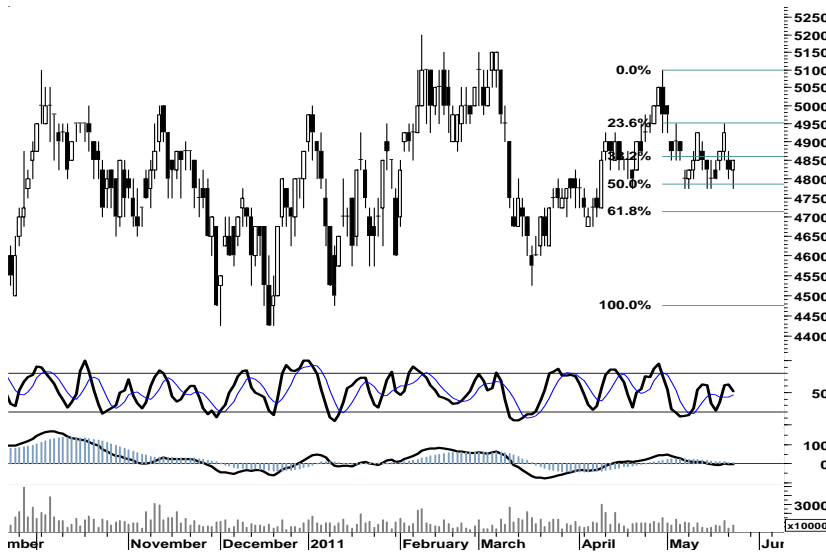
S1	S2	R1	R2
2,125	2,100	2,200	2,225



Doji dipenghujung downtrend channel dan oversold area setelah melengkapi penutupan celah harga 3.350, membuka peluang BUMI untuk melakukan reverse menguji resistensi 3.450.

Perketat stop-loss trading pada level 3.280, apabila BUMI cenderung melanjutkan tekanan pelemahan di bawah support 3.350.

S1	S2	R1	R2
3,325	3,300	3,450	3,475



Perlawan tekanan beli di akhir sesi kemarin, membawa INCO kembali pada zona positif perdagangan setelah berhasil reverse pada support fibo 50% di level 4.800.

Waspada indikasi dead-cross stochastic yang berpotensi menyeret kembali INCO menembus support 4.800, apabila gagal menembus resistensi 4.900.

S1	S2	R1	R2
4,800	4,750	4,900	4,950



Signal negatif leading indicator yang berada pada level 80 overbought area, berpotensi menyeret ITMG kembali menguji support 45.600. Apabila ITMG gagal melakukan penetrasi fibo rasio 50% resisten harga 47.600 - 47.650.

S1	S2	R1	R2
46,150	45,600	47,600	48,150



PTBA memiliki ruang untuk melanjutkan rally penguatannya, setelah berhasil menutup resisten celah harga 21.300.

Signal positif stochastic, diharapkan mampu memberikan dorongan positif untuk menguji resistensi celah harga 21.750.

S1	S2	R1	R2
21,000	20,700	21,600	21,900

TRADE DATA

JCI (IHSG) 3,785.9 7.5 0.20%

YTD (Rp)	2.2%	Volume (m) :	6,083
YTD (USD)	7.1%	Nilai (Rpbn) :	4,225
Moving Avg 20day	3,815	Mkt Cap (Rptr) :	3,371
Moving Avg 50day	3,720	Market P/E (x) :	16.2
Moving Avg 200day	3,539	Market Div. Yield (%) :	2.4

Indonesia & Sectors +/- (%) YTD (%)

MSCI Indonesia	4,689.7	-7.0	-0.15	3.15
JII	525.4	1.1	0.22	-1.40
LQ45	673.5	0.1	0.02	1.84
JAKFIN Index	494.6	0.2	0.00	5.99
JAKINFR Index	788.4	8.5	0.01	-3.76
JAKMINE Index	3,206.4	19.1	0.01	-2.07
JAKCONS Index	1,115.5	-4.4	-0.00	1.90
JAKTRAD Index	494.9	-0.3	-0.00	4.40
JAKMIND Index	1,056.2	-16.9	-0.02	9.23
JAKBIND Index	401.0	2.6	0.01	3.56
JAKPROP Index	205.3	2.0	0.01	1.09
JAKAGRI Index	2,311.0	29.8	0.01	1.17

Commodities +/- (%) YTD (%)

CRB Index	339.10	2.2	0.66	1.89
Oil & Gas				
Crude Oil	99.59	1.9	1.93	8.98
Natural Gas	4.35	-0.0	-0.02	-1.36
COAL (Rotterdam)	121.35	0.4	0.37	-7.65
COAL (Amsterdam)	120.71	-1.9	-1.54	-4.16
COAL (Australia,wk)	117.10	0.0	0.00	-4.33
Industrial Metals				
Aluminium	2,486.3	27.3	1.11	1.10
Nickel	22,895	500	2.23	-7.49
Tin	27,250	525	1.96	1.30
Precious Metal				
Gold	1,523.30	7.9	0.52	7.17
Silver	36.13	1.2	3.51	16.88
Soft Commodities				
CPO (Malaysia)	3,460.00	17.0	0.49	-9.28
CPO (Netherlands)	1,157.50	27.5	2.43	-9.92
Rubber	4,923.73	95.1	1.97	-1.40
Corn	733.25	-20.8	-2.75	16.57
Wheat	779.75	-23.3	-2.90	-1.83
Soybeans	1,372.25	-1.5	-0.11	-1.54
Rice (Indonesia)	6,750.00	0.0	0.00	-4.93

Winners

Stock	Price	(%)	Stock	Price	(%)
SMMA	2,725	13.54	DSSA	15,500	-13.89
BTPN	3,000	4.35	SCMA	4,400	-4.35
SMAR	6,800	3.03	ICBP	5,250	-1.87
BORN	1,490	2.76	ASII	58,100	-1.86
CPIN	1,870	2.19	INDF	5,300	-1.85
PGAS	3,975	1.92	BBCA	7,050	-1.40
BNII	600	1.69	BBRI	6,200	-0.80
PTBA	21,250	1.67	BBNI	3,800	-0.65
TLKM	7,650	1.32	GGRM	43,500	-0.46
UNTR	22,150	0.68	UNVR	14,800	-0.34

Losers

Stock	Price	(%)	Stock	Price	(%)
DSSA	15,500	-13.89	SCMA	4,400	-4.35
ICBP	5,250	-1.87	ASII	58,100	-1.86
INDF	5,300	-1.85	BBCA	7,050	-1.40
BBCA	7,050	-1.40	BBRI	6,200	-0.80
BBRI	6,200	-0.80	BBNI	3,800	-0.65
BBNI	3,800	-0.65	GGRM	43,500	-0.46
GGRM	43,500	-0.46	UNVR	14,800	-0.34
UNVR	14,800	-0.34			

Regional Indices +/- (%) YTD (%)

MXWO	MSCI World	1,315.8	2.1	0.16	2.79
SPX	S&P 500	1,316.3	-1.1	-0.08	4.66
US					
Dow Jones Industrial		12,356.2	-25.1	-0.20	6.73
Nasdaq	US	2,746.2	-12.7	-0.46	3.52
Europe					
EURO 50	Europe	275.4	0.6	0.22	-0.15
FTSE	London	5,858.4	22.5	0.39	-0.70
DAX	Germany	7,150.7	29.1	0.41	3.42
CAC	France	3,916.9	9.9	0.25	2.95
SMI	Swiss	6,454.3	16.5	0.26	0.28
BRIC					
BOVESPA	Brazil	63,336.8	991.6	1.59	-8.61
MICEX	Russia	1,598.8	25.7	1.63	-5.28
SENSEX	India	18,012.0	18.6	0.10	-12.18
NIFTY	India	5,394.9	8.3	0.15	-12.06
SHCOMP	China	2,767.1	-7.5	-0.27	-1.46
SZCOMP	China	1,150.9	1.5	0.13	-10.84

Developed ASIA

Nikkei	Japan	9,477.2	16.5	0.17	-7.35
TPX	Japan	819.2	1.5	0.18	-8.86
HIS	Hong kong	22,730.8	19.8	0.09	-1.32
KOSPI	S.Korea	2,061.8	6.1	0.29	0.52
TAIEX	Taiwan	8,756.6	9.1	0.10	-2.41
FSSTI	Singapore	3,113.1	2.6	0.08	-2.41

ASEAN

SET	Thailand	1,064.2	10.3	0.97	3.05
PCOMP	Philippines	4,227.1	-36.1	-0.85	0.62
KLCI	Malaysia	1,532.1	3.1	0.21	0.87
VNINDEX	Vietnam	402.6	-15.2	-3.65	-16.93

Currency +/- (%) YTD (%)

EURUSD	Euro	1.410	0.005	0.37	5.35
GBPUSD	United Kingdom	1.618	0.006	0.36	3.64
USDCHE	Switzerland	0.880	-0.004	-0.43	-5.90
USDCAD	Canada	0.977	-0.001	-0.12	-2.13
AUDUSD	Australia	1.056	0.005	0.51	3.19
NZDUSD	New Zealand	0.796	0.006	0.75	2.05
USDJPY	Japan	82.0	-0.060	-0.07	1.02
USDCNY	China	6.498	-0.009	-0.14	-1.66
USDHKD	Hongkong	7.777	-0.002	-0.02	0.05
USDSGD	Singapore	1.247	-0.001	-0.12	-2.81
Rupiah	Indonesia	8,571.0	-22.000	-0.26	-4.72

Value (Rpbn)

Value (Rpbn)	Volume (Lot)	Freq (x)
ASII 247,493	BNBR 2,101,264	ENRG 4,789
BBRI 218,831	ENRG 1,779,248	KRAS 4,542
BUMI 210,023	DEWA 1,033,942	BORN 3,450
ENRG 168,153	ELTY 865,686	BNBR 2,985
BBNI 163,238	BULL 685,097	ELTY 2,881
BORN 153,115	TRUB 463,348	DEWA 2,526
BMRI 138,815	BORN 207,100	ASII 2,343
INDF 120,101	AMAG 173,119	BBRI 2,160
TLKM 116,954	TRAM 153,517	BUMI 2,030
BBCA 92,877	LPKR 144,230	POLY 2,021

Code	Last	Ytd Chg(%)	H-5 Chg (%)	Rekomendasi	STO	RSI	MACD	Bollinger Band		Support			Resistance			H-5	
								Top	Bottom	1	2	3	1	2	3	Highest	Lowest
AALI	23,150	-13.62	-2.11	Trading	57.6	46.9	198.1	24,200	23,050	22,500	21,850	21,300	23,700	24,250	24,900	24,150	22,400
ACES	2,650	-7.02	-1.85	Trading	50.0	51.3	19.6	2,750	2,600	2,650	2,650	2,650	2,650	2,650	2,650	2,700	2,600
ADRO	2,325	-13.08	2.20	OverBought	79.2	52.9	16.9	2,450	2,275	2,300	2,275	2,250	2,350	2,375	2,400	2,400	2,200
AKRA	1,650	-2.94	3.13	OverBought	71.8	56.8	26.1	1,720	1,620	1,620	1,590	1,560	1,680	1,710	1,740	1,710	1,580
ANTM	2,150	-13.13	-2.27	Trading	41.7	36.1	(21.4)	2,250	2,150	2,100	2,050	2,000	2,200	2,250	2,300	2,250	2,100
ASII	59,200	8.82	1.20	OverBought	70.8	57.4	1,179.4	62,700	58,100	58,200	57,150	55,750	60,650	62,050	63,100	62,150	58,150
BBCA	7,150	10.85	-2.05	Trading	52.4	48.0	9.9	7,400	7,100	7,050	6,950	6,850	7,250	7,350	7,450	7,400	7,050
BBNI	3,825	0.66	-2.55	Trading	52.9	41.6	(8.6)	4,000	3,825	3,800	3,750	3,700	3,900	3,950	4,000	3,975	3,800
BBRI	6,250	20.77	0.00	StrongSell	80.0	51.7	85.7	6,750	6,100	6,150	6,000	5,850	6,450	6,600	6,750	6,550	6,050
BBTN	1,620	-2.99	-2.99	OverSold	31.6	41.8	(6.5)	1,700	1,610	1,610	1,600	1,570	1,650	1,680	1,690	1,690	1,620
BDMN	5,850	6.36	-4.10	Trading Buy	7.1	30.5	(95.3)	6,200	5,850	5,750	5,650	5,500	6,000	6,150	6,250	6,200	5,800
BISI	1,550	-17.11	-5.49	Trading Buy	12.0	39.8	(21.6)	1,660	1,530	1,530	1,510	1,480	1,580	1,610	1,630	1,660	1,540
BMRI	7,100	10.08	-0.70	OverBought	75.0	54.5	97.1	7,350	7,000	7,000	6,900	6,800	7,200	7,300	7,400	7,300	6,950
BSDE	900	2.27	-3.23	OverSold	21.4	51.5	11.6	930	885	890	875	870	910	915	930	940	880
BTEL	370	57.45	-2.63	OverSold	30.0	44.9	2.0	382	367	365	360	355	375	380	385	385	365
BUMI	3,350	7.20	-4.96	Trading	42.1	43.3	41.7	3,600	3,350	3,325	3,275	3,200	3,450	3,525	3,575	3,550	3,350
CTRA	400	14.29	-8.05	OverSold	29.2	53.9	10.6	430	391	390	380	370	410	420	430	435	390
ELTY	160	-0.62	-5.33	Trading	45.9	56.2	7.2	182	156	156	152	145	167	174	178	182	159
EXCL	6,350	20.95	-2.31	OverSold	25.0	52.7	125.5	6,700	6,300	6,250	6,150	6,000	6,500	6,650	6,750	7,000	6,250
GGRM	43,700	6.46	-0.11	TakeProfit	70.2	64.9	725.3	44,650	43,300	43,150	42,600	42,300	44,000	44,300	44,850	44,900	40,800
HEXA	6,400	-11.72	-1.54	OverBought	69.6	56.4	171.8	7,000	6,100	6,300	6,200	6,050	6,550	6,700	6,800	6,850	6,000
INCO	4,825	-3.02	0.00	OverBought	63.2	48.4	5.5	4,975	4,775	4,800	4,775	4,725	4,875	4,925	4,950	4,950	4,775
INDF	5,400	9.09	-4.42	Trading	50.0	44.3	54.0	5,850	5,400	5,250	5,100	4,900	5,600	5,800	5,950	5,750	5,250
INDY	3,975	-22.06	-4.22	OverSold	32.3	42.3	22.4	4,275	3,950	3,925	3,850	3,750	4,100	4,200	4,275	4,275	3,950
INTP	17,000	5.92	2.10	OverBought	72.2	56.5	84.6	17,550	16,250	16,800	16,600	16,400	17,200	17,400	17,600	17,250	16,300
ISAT	5,200	-4.59	-0.95	OverBought	66.7	43.6	(5.2)	5,450	5,150	5,200	5,150	5,100	5,300	5,350	5,400	5,350	5,200
ITMG	46,250	-14.83	0.65	StrongSell	81.8	45.1	(422.9)	48,150	44,650	46,000	45,700	45,250	46,750	47,200	47,500	47,200	44,400
JSMR	3,425	-3.52	0.00	Trading	46.7	54.9	30.0	3,525	3,400	3,400	3,375	3,350	3,450	3,475	3,500	3,525	3,400
KLBF	3,325	0.00	-2.92	Trading	42.4	39.6	(5.2)	3,625	3,300	3,200	3,075	2,925	3,475	3,625	3,750	3,600	3,225
LSIP	2,350	-7.48	-3.09	OverSold	35.7	45.3	2.7	2,425	2,350	2,300	2,250	2,200	2,400	2,450	2,500	2,450	2,300
MYOR	11,700	8.33	0.43	Trading	45.0	57.0	174.3	12,050	11,650	11,650	11,600	11,500	11,800	11,900	11,950	12,300	11,550
PGAS	3,900	-12.85	-3.70	StrongBuy	18.2	40.8	11.9	4,050	3,900	3,900	3,875	3,850	3,950	3,975	4,000	4,100	3,900
PTBA	20,900	-12.73	-2.34	Trading	46.2	36.1	(228.6)	21,200	20,800	20,750	20,600	20,400	21,100	21,300	21,450	21,500	20,600
RALS	750	-12.79	-1.32	OverBought	69.2	48.1	(4.7)	780	740	740	730	720	760	770	780	770	730
SGRO	3,375	3.85	-0.74	OverSold	38.9	53.0	58.0	3,525	3,375	3,350	3,300	3,225	3,475	3,550	3,600	3,525	3,375
SMCB	2,050	-7.87	-2.38	OverBought	75.0	43.2	0.0	2,250	2,000	2,025	2,000	1,925	2,125	2,200	2,225	2,175	2,000
SMGR	9,650	-2.03	3.21	StrongSell	86.2	61.1	63.6	9,950	9,350	9,600	9,550	9,450	9,750	9,850	9,900	9,800	9,250
SMRA	1,090	0.93	-3.54	OverSold	27.8	40.1	(8.7)	1,140	1,090	1,080	1,070	1,050	1,110	1,130	1,140	1,160	1,080
TINS	2,625	-7.89	-2.78	OverBought	63.2	39.2	(24.4)	2,750	2,600	2,575	2,525	2,475	2,675	2,725	2,775	2,725	2,575
TLKM	7,550	-5.63	-1.95	OverSold	25.0	52.3	81.8	7,800	7,500	7,500	7,450	7,400	7,600	7,650	7,700	7,800	7,500
UNTR	22,000	-9.47	-2.00	Trading	48.6	47.4	100.2	22,650	21,700	21,850	21,700	21,500	22,200	22,400	22,550	22,700	21,550
UNVR	14,850	-7.48	-0.34	Trading	58.6	39.7	(101.7)	15,100	14,800	14,800	14,750	14,650	14,950	15,050	15,100	15,150	14,650

S1 = Support 1 S2 = Support 2 S3 = Support 3
 R1 = Resisten 1 R2 = Resisten 2 R2 = Resisten 2
 STO = Stochastic Oscillator
 RSI = Relative Strength Index
 MACD = Moving Average Convergence Divergence
 H-5 = 5 hari sebelumnya

RESEARCH TEAM

Andrian Tanuwijaya	Equity Analyst	(andrian.tanuwijaya@trimegah.com)
Hanel Topada Era Tania	Equity Analyst	(hanel.tania@trimegah.com)
T Heldy Arifien	Technical Analyst	(heldy@trimegah.com)
Rovandi	Research Assistant	(rovandi@trimegah.com)

EQUITY CAPITAL MARKET TEAM

Nathanael Benny Prasetyo	Head of Retail ECM	(benny.prasetyo@trimegah.com)
Windra Djulnaily	Pluit, Jakarta	(windra.djulnaily@trimegah.com)
Ariawan Anwar	Artha Graha, Jakarta	(ariawan.anwar@trimegah.com)
Ferry Zabur	Kelapa Gading, Jakarta	(ferry.zabur@trimegah.com)
Wirjawan Joesoef	Mangga Dua, Jakarta	(iwan@trimegah.com)
Lukman Abdul Azis	Kebon Jeruk, Jakarta	(lukman@trimegah.com)
Tutik Suciati	Semarang, Jawa Tengah	(tuty.s@trimegah.com)
Sonny Muljadi	Surabaya, Jawa Timur	(sonny.muljadi@trimegah.com)
Ni Luh Ketut Sri Agustini	Denpasar, Bali	(sri.agustini@trimegah.com)
Philip Fernando Suwandi	Makassar, Sulawesi Selatan	(philip.fs@trimegah.com)
agus.jatmiko	Balikpapan, Kalimantan Timur	(agus.jatmiko@trimegah.com)
Asep Saepudin	Bandung, Jawa Barat	(asep.saepudin@trimegah.com)
Asep Saepudin	Cirebon, Jawa Barat	(asep.saepudin@trimegah.com)
Very Wijaya	Medan, Sumatera Utara	(very.wijaya@trimegah.com)
Tantie Rivi Watie	Pekanbaru, Riau	(tantierw@trimegah.com)
Agus Bambang Suseno	Solo, Jawa Tengah	(agus.suseno@trimegah.com)
Agus Bambang Suseno	Yogyakarta, Jawa Tengah	(agus.suseno@trimegah.com)
Donny Kristanto Setiadi	Palembang, Sumatra Selatan	(donny.kristanto@trimegah.com)
Sonny Muljadi	Malang, Jawa Timur	(sonny.muljadi@trimegah.com)

PT Trimegah Securities Tbk
18th Fl, Artha Graha Building
Jl. Jend. Sudirman Kav. 52-53
Jakarta 12190, INDONESIA
Tel : (6221) 2924 9088 Fax : (6221) 2924 9163

DISCLAIMER

This report has been prepared by PT Trimegah Securities Tbk on behalf of itself and its affiliated companies and is provided for information purposes only. Under no circumstances is it to be used or considered as an offer to sell, or a solicitation of any offer to buy. This report has been produced independently and the forecasts, opinions and expectations contained herein are entirely those of Trimegah Securities.

While all reasonable care has been taken to ensure that information contained herein is not untrue or misleading at the time of publication, Trimegah Securities makes no representation as to its accuracy or completeness and it should not be relied upon as such. This report is provided solely for the information of clients of Trimegah Securities who are expected to make their own investment decisions without reliance on this report. Neither Trimegah Securities nor any officer or employee of Trimegah Securities accept any liability whatsoever for any direct or consequential loss arising from any use of this report or its contents. Trimegah Securities and/or persons connected with it may have acted upon or used the information herein contained, or the research or analysis on which it is based, before publication. Trimegah Securities may in future participate in an offering of the company's equity securities.