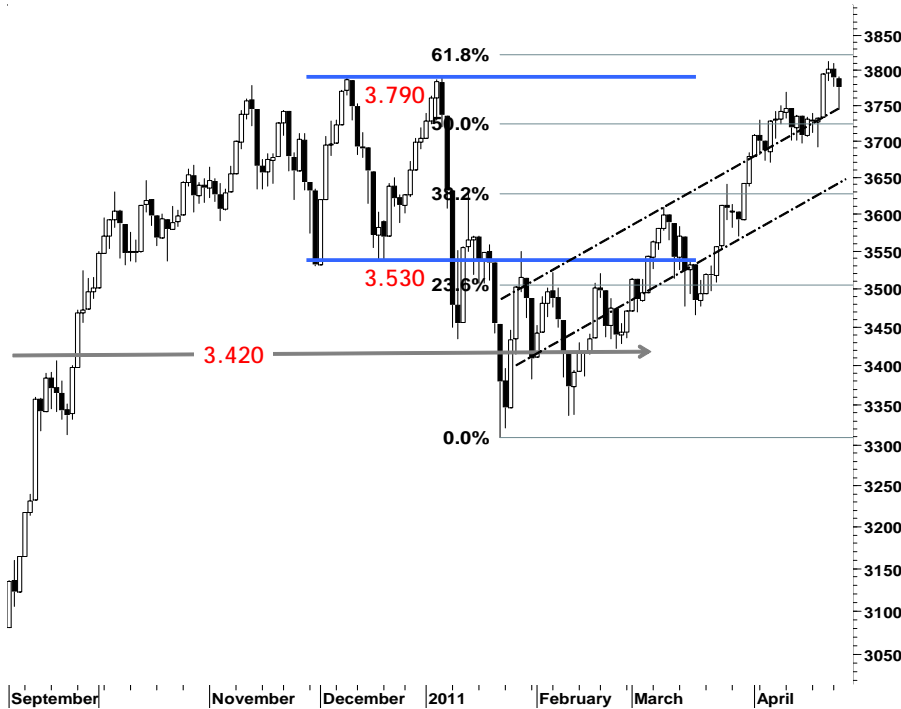


IHSG 3.774,9 -13,7 -0,36%

Ulisan Pasar



Fluktuasi harga sejumlah saham unggulan, terutama dalam sektor perbankan, menekan laju pergerakan IHSG mencapai level 3.744 menguji trend support jangka pendeknya di level 3.746 - 3.750. Sebelum akhirnya di tutup di atas support 3.770, dan mendarat di level 3.774.

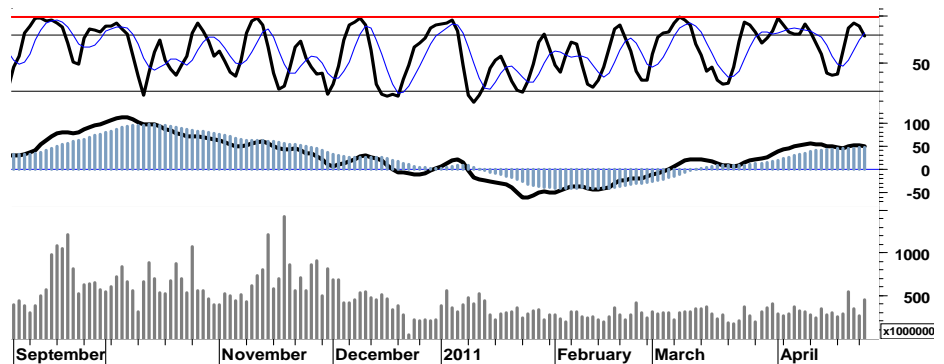
Dead-crossing yang muncul pada leading indicator kemarin, mengindikasikan perjalanan IHSG masih akan dibayang-bayangi oleh tekanan pelemahan harga pada area overbought. Dan merupakan salah satu katalis negatif yang dikhawatirkan akan menekan IHSG kembali menguji penembusan trend-support jangka pendek di level 3.750.

Akumulasi beli sejumlah saham pada sektor perkebunan yang di lakukan oleh para pelaku pasar menjelang akhir sesi perdagangan, berhasil mendorong kenaikan rasio volume perdagangan hingga 20% menjadi signal positif bagi IHSG yang di harapkan mampu memberi

ruang untuk dapat bergerak positif menguji resistensi harga 3.795 - 3.800. Momentum yang dapat dipergunakan para pelaku pasar, untuk melakukan profit taking atau meminimalisasi kerugian yang mungkin di alami dengan terlambat melakukan aksi jual kemarin.

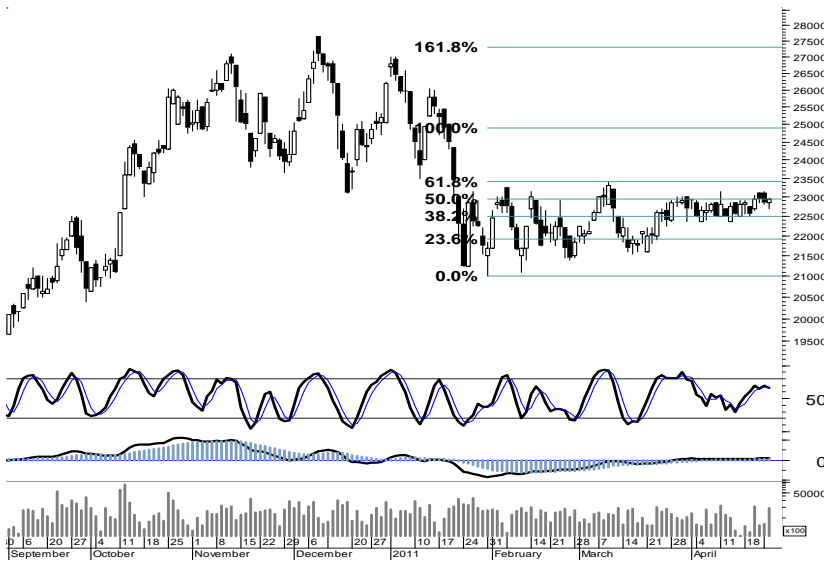
Kami perkirakan IHSG pada perdagangan hari ini, akan mencoba bergerak dalam interval 3.730 - 3.805.

S1	S2	R1	R2
3,750	3,720	3,795	3,815



Saham Pilihan

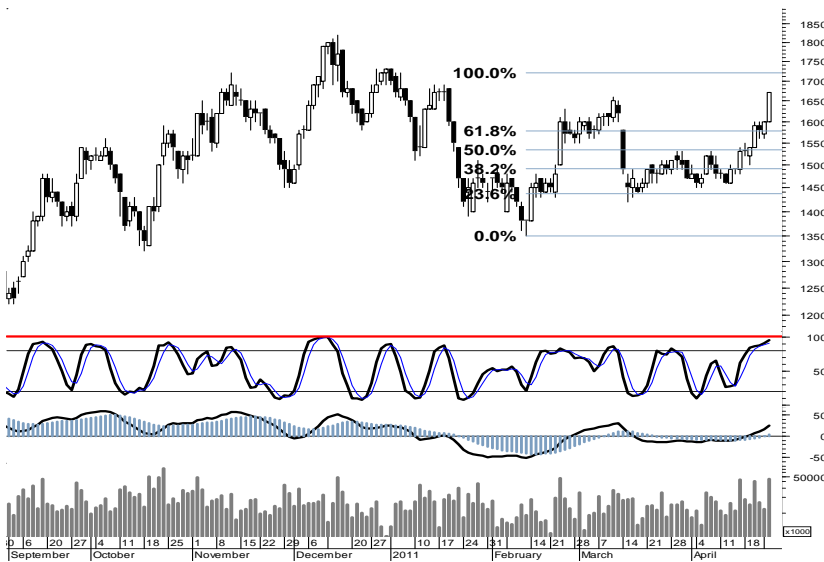
Saham	Harga (Rp)	Rekomendasi	Stochastic	RSI	BB Top	BB Bottom	S1	S2	R1	R2
AALI	22,950	OverBought	65.79	55.54	23,250	22,600	22,800	22,650	23,150	23,300
AKRA	1,670	StrongSell	94.87	73.18	1,700	1,530	1,630	1,580	1,720	1,770
ELTY	142	OverBought	71.43	59.80	143	138	139	136	146	149
KLBF	3,600	Trading	52.38	60.86	3,725	3,550	3,575	3,525	3,725	3,775
MYOR	11,600	Trading	48.15	65.31	11,800	11,450	11,400	11,150	11,850	12,100
SGRO	3,250	Trading	50.00	61.13	3,300	3,225	3,225	3,200	3,300	3,325



Untuk dapat keluar dari area konsolidasi, AAI membutuhkan lebih dari sekedar pertumbuhan rasio volume perdagangan sebesar 67% ataupun signal positif MACD agar dapat melampaui resisten harga 23.150.

Minimnya signal positif, kami perkirakan AAI akan mencoba bergerak pada kisaran 22.600 - 23.150.

S1	S2	R1	R2
22,800	22,650	23,150	23,300



Masih tersedianya ruang penguatan bagi AKRA di area overbought leading indicatornya, merupakan kesempatan untuk mengakumulasi profit yang telah diperoleh apabila AKRA bergerak menguji resistensi 1.720.

Kami perkirakan AKRA mencoba bergerak dalam interval 1.580 - 1.720.

S1	S2	R1	R2
1,630	1,580	1,720	1,770



Signal positif stochastic serta pertumbuhan rasio perdagangan hingga mencapai 44%, diharapkan mampu mendorong ELTY untuk menguji penembusan resistensi 146.

S1	S2	R1	R2
139	136	146	149



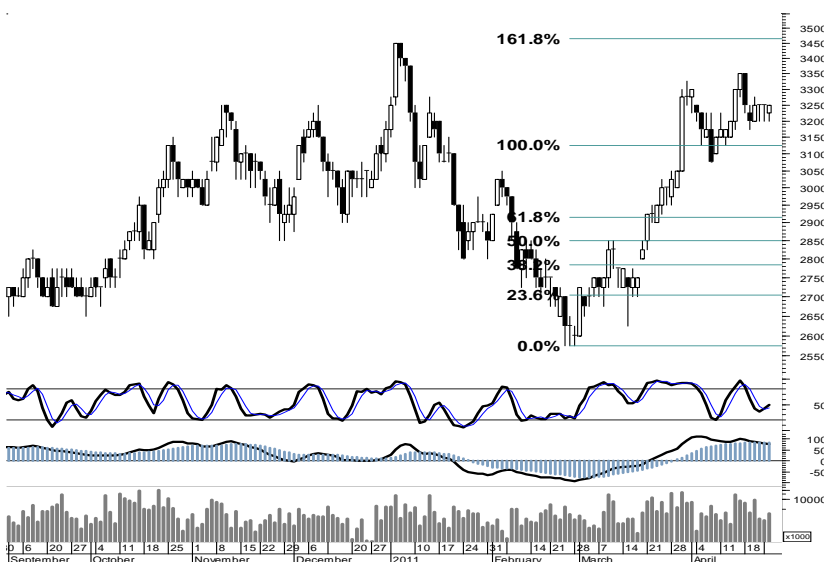
Golden Cross Signal yang muncul dua hari lalu serta basis support 3.575, diharapkan mampu mendorong KLBF menguji penetrasi resistensi 3.725.

S1	S2	R1	R2
3,575	3,525	3,725	3,775



Golden cross pada stochastic diharapkan mampu mendorong MYOR untuk mencapai resistensi harga 11.850.

S1	S2	R1	R2
11,400	11,150	11,850	12,100



Ditutup pada area pivot support harga 3.250 telah menempatkan SGRO pada kondisi berimbang.

Signal positif leading indicator yang muncul kemarin, diharapkan mampu mendorong SGRO untuk menguji penembusan 3.300.

S1	S2	R1	R2
3,225	3,200	3,300	3,325

TRADE DATA

JCI (IHSG) 3,774.9 -13.7 -0.36%

YTD (Rp)	1.9%	Volume (m) :	4,342
YTD (USD)	6.7%	Nilai (Rpbn) :	3,611
Moving Avg 20day	3,723	Mkt Cap (Rptr) :	3,367
Moving Avg 50day	3,599	Market P/E (x) :	16.3
Moving Avg 200day	3,458	Market Div. Yield (%) :	2.4

Indonesia & Sectors +/- (%) YTD (%)

MSCI Indonesia	4704.05	-27.9	-0.59	3.46
JII	521.35	-3.9	-0.75	-2.17
LQ45	676.03	-3.3	-0.49	2.21
JAKFIN Index	506.76	-1.8	-0.00	8.59
JAKINFR Index	783.72	-1.0	-0.00	-4.33
JAKMINE Index	3225.38	-8.4	-0.00	-1.49
JAKCONS Index	1117.81	-3.9	-0.00	2.12
JAKTRAD Index	488.98	-0.9	-0.00	3.14
JAKMIND Index	977.99	-13.1	-0.01	1.13
JAKBIND Index	400.74	-3.3	-0.01	3.48
JAKPROP Index	206.85	0.5	0.00	1.85
JAKAGRI Index	2166.92	9.9	0.00	-5.14

Commodities +/- (%) YTD (%)

CRB Index	366.19	-0.4	-0.10	10.03
Oil & Gas				
Crude Oil	112.21	-0.1	-0.06	22.79
Natural Gas	4.39	-0.0	-0.05	-0.41
COAL (Rotterdam)	126.30	-1.5	-1.14	-3.88
COAL (Amsterdam)	128.75	0.0	0.00	2.22
COAL (Australia,wk)	122.80	0.0	0.00	0.33
Industrial Metals				
Aluminium	2,744.75	2.8	0.10	11.61
Nickel	26,650	-250	-0.93	7.68
Tin	32,725	0	0.00	21.65
Precious Metal				
Gold	1,503.50	-5.6	-0.37	5.78
Silver	45.05	-2.1	-4.45	45.75
Soft Commodities				
CPO (Malaysia)	3,387.00	-25.0	-0.73	-11.20
CPO (Netherlands)	1,165.00	15.0	1.30	-9.34
Rubber	5,340.28	-70.9	-1.31	6.94
Corn	766.25	3.8	0.49	21.82
Wheat	811.25	-14.8	-1.79	2.14
Soybeans	1,382.75	-6.8	-0.49	-0.79
Rice (Indonesia)	6,600.00	0.0	0.00	-7.04

Winners

Stock	Price	(%)	Stock	Price	(%)
ENRG	153	8.51	ISAT	5,250	-2.78
UNSP	380	5.56	INTP	17,200	-2.55
EMTK	1,630	4.49	KLBF	3,600	-2.04
AKRA	1,670	4.38	ASII	54,100	-1.46
INDY	4,025	1.90	TLKM	7,450	-1.32
EXCL	6,400	1.59	BBNI	4,100	-1.20
PGAS	3,975	1.27	ADRO	2,225	-1.11
INDF	5,650	0.89	GGRM	40,450	-0.98
BBCA	7,550	0.67	BBRI	6,450	-0.77
UNVR	15,250	0.33	BMRI	7,000	-0.71

Losers

Stock	Price	(%)	Stock	Price	(%)
ISAT	5,250	-2.78	ISAT	5,250	-2.78
INTP	17,200	-2.55	INTP	17,200	-2.55
KLBF	3,600	-2.04	KLBF	3,600	-2.04
ASII	54,100	-1.46	ASII	54,100	-1.46
TLKM	7,450	-1.32	TLKM	7,450	-1.32
BBNI	4,100	-1.20	BBNI	4,100	-1.20
ADRO	2,225	-1.11	ADRO	2,225	-1.11
GGRM	40,450	-0.98	GGRM	40,450	-0.98
BBRI	6,450	-0.77	BBRI	6,450	-0.77
BMRI	7,000	-0.71	BMRI	7,000	-0.71

Regional Indices +/- (%) YTD (%)

MXWO	MSCI World	1,366.7	9.2	0.68	6.77
SPX	S&P 500	1,347.2	12.0	0.90	7.12
US					
Dow Jones Industrial		12,595.4	115.5	0.93	8.79
Nasdaq	US	2,847.5	21.7	0.77	7.34
Europe					
EURO 50	Europe	281.2	0.8	0.27	1.97
FTSE	London	6,069.4	51.1	0.85	2.87
DAX	Germany	7,356.5	61.0	0.84	6.40
CAC	France	4,045.3	23.4	0.58	6.32
SMI	Swiss	6,476.6	19.4	0.30	0.63
BRIC					
BOVESPA	Brazil	67,144.3	171.9	0.26	-3.12
MICEX	Russia	1,766.3	-3.7	-0.21	4.64
SENSEX	India	19,545.4	-39.0	-0.20	-4.70
NIFTY	India	5,868.4	-6.1	-0.10	-4.34
SHCOMP	China	2,939.0	-26.0	-0.88	4.66
SZCOMP	China	1,232.8	-16.8	-1.34	-4.50

Developed ASIA

Nikkei	Japan	9,558.7	-113.3	-1.17	-6.55
TPX	Japan	833.6	-7.0	-0.84	-7.25
HIS	Hong kong	24,007.4	-130.9	-0.54	4.22
KOSPI	S.Korea	2,206.3	-9.7	-0.44	7.57
TAIEX	Taiwan	8,948.1	-2.6	-0.03	-0.27
FSSTI	Singapore	3,171.8	-15.9	-0.50	-0.57

ASEAN

SET	Thailand	1,097.0	-8.5	-0.77	6.22
PCOMP	Philippines	4,305.6	-25.8	-0.60	2.49
KLCI	Malaysia	1,527.3	3.3	0.22	0.56
VNINDEX	Vietnam	461.9	-3.8	-0.81	-4.70

Currency +/- (%) YTD (%)

EURUSD	Euro	1.464	0.006	0.43	9.41
GBPUSD	United Kingdom	1.648	-0.002	-0.10	5.57
USDCHE	Switzerland	0.875	-0.006	-0.68	-6.42
USDCAD	Canada	0.952	-0.003	-0.29	-4.65
AUDUSD	Australia	1.079	0.006	0.59	5.39
NZDUSD	New Zealand	0.806	0.006	0.80	3.27
USDJPY	Japan	81.6	-0.280	-0.34	0.53
USDCNY	China	6.528	-0.004	-0.07	-1.20
USDHKD	Hongkong	7.772	-0.000	-0.00	-0.02
USDSGD	Singapore	1.232	-0.004	-0.34	-4.00
Rupiah	Indonesia	8,643.0	20.000	0.23	-3.92

Value

Value (Rpbn)	Volume (Lot)	Freq (x)
ASII 238,098	ENRG 1,848,537	GOLD 12,665
BUMI 158,651	BNBR 625,213	ENRG 3,849
ENRG 136,266	BIPI 601,827	BJBR 3,619
ADRO 132,478	ELTY 377,938	GREN 2,974
BJBR 128,491	DEWA 258,731	BIPI 2,915
BBRI 126,655	TRUB 242,511	AKRA 2,445
KLBF 112,952	LPKR 232,236	JPRS 2,353
PGAS 102,630	BJBR 201,313	ULTJ 2,306
ITMG 96,592	GREN 191,044	ELTY 2,080
LPKR 92,277	GOLD 156,531	ADRO 2,054

Code	Last	Ytd Chg(%)	H-5 Chg (%)	Rekomendasi	STO	RSI	MACD	Bollinger Band		Support			Resistance			H-5	
								Top	Bottom	1	2	3	1	2	3	Highest	Lowest
AALI	22,950	-14.37	0.44	OverBought	65.8	55.5	114.2	23,250	22,600	22,800	22,650	22,550	23,050	23,150	23,300	23,150	22,500
ACES	2,600	-8.77	-0.95	Trading	56.3	55.0	13.1	2,650	2,550	2,575	2,550	2,475	2,675	2,750	2,775	2,700	2,525
ADRO	2,225	-16.82	0.00	Trading	40.0	42.6	(23.6)	2,275	2,225	2,200	2,175	2,150	2,250	2,275	2,300	2,275	2,200
AKRA	1,670	-1.76	9.15	StrongSell	94.9	73.2	25.2	1,700	1,530	1,630	1,580	1,560	1,700	1,720	1,770	1,670	1,500
ANTM	2,250	-9.09	-3.23	OverSold	25.0	44.1	11.7	2,350	2,250	2,250	2,225	2,200	2,300	2,325	2,350	2,350	2,250
ASII	54,100	-0.55	-0.55	Trading	55.6	44.7	(148.5)	56,300	53,250	53,600	53,100	52,450	54,750	55,400	55,900	56,000	53,600
BBCA	7,550	17.05	2.03	TakeProfit	63.3	74.3	194.7	7,600	7,450	7,400	7,250	7,150	7,650	7,750	7,900	7,700	7,250
BBNI	4,100	7.89	2.50	StrongSell	86.7	66.8	87.9	4,250	3,975	4,050	4,000	3,950	4,150	4,200	4,250	4,175	3,900
BBRI	6,450	24.64	3.20	TakeProfit	69.7	71.6	294.6	6,750	6,250	6,400	6,300	6,250	6,550	6,600	6,700	6,650	6,100
BBTN	1,770	5.99	1.14	TakeProfit	77.8	73.6	60.9	1,790	1,760	1,760	1,740	1,730	1,790	1,800	1,820	1,790	1,730
BDMN	6,300	14.55	0.00	Trading	47.1	43.7	(30.6)	6,400	6,250	6,300	6,250	6,250	6,350	6,350	6,400	6,500	6,200
BISI	1,700	-9.09	-4.49	OverSold	22.7	52.4	64.8	1,840	1,690	1,670	1,640	1,580	1,760	1,820	1,850	1,820	1,700
BMRI	7,000	8.53	4.48	StrongSell	83.3	62.5	179.7	7,350	6,750	6,950	6,850	6,800	7,100	7,150	7,250	7,150	6,550
BSDE	920	4.55	5.75	StrongSell	87.5	77.3	34.2	955	875	910	895	890	930	935	950	930	850
BTEL	385	63.83	-1.28	TakeProfit	60.0	73.1	16.5	390	382	382	379	377	387	389	392	390	375
BUMI	3,325	6.40	-0.75	Trading	46.7	59.0	63.3	3,375	3,300	3,300	3,275	3,250	3,350	3,375	3,400	3,400	3,275
CTRA	375	7.14	-1.32	OverBought	66.7	54.3	9.9	399	367	370	365	355	385	395	400	395	365
ELTY	142	-11.80	3.65	OverBought	71.4	59.8	0.1	143	138	139	136	134	144	146	149	142	135
EXCL	6,400	21.90	9.40	TakeProfit	73.6	69.4	159.3	6,600	6,050	6,350	6,300	6,250	6,450	6,500	6,550	6,550	5,650
GGRM	40,450	-1.46	-0.61	Trading	57.1	48.5	108.5	41,600	40,050	40,150	39,850	39,500	40,800	41,150	41,450	41,450	40,050
HEXA	5,750	-20.69	2.68	Trading	77.8	43.3	(164.8)	5,900	5,550	5,650	5,550	5,500	5,800	5,850	5,950	5,800	5,500
INCO	4,950	-0.50	2.06	TakeProfit	73.9	60.4	25.0	5,025	4,825	4,925	4,900	4,875	4,975	5,000	5,025	4,975	4,775
INDF	5,650	14.14	4.63	StrongSell	86.4	73.2	129.5	5,750	5,500	5,600	5,550	5,500	5,700	5,750	5,800	5,700	5,300
INDY	4,025	-21.08	1.26	OverBought	72.2	53.8	5.0	4,050	3,925	3,975	3,900	3,875	4,075	4,100	4,175	4,025	3,875
INTP	17,200	7.17	1.47	TakeProfit	72.0	61.1	531.7	18,000	17,050	16,950	16,700	16,400	17,500	17,800	18,050	17,900	16,650
ISAT	5,250	-3.67	-1.87	OverSold	36.4	48.3	44.5	5,500	5,250	5,200	5,150	5,050	5,350	5,450	5,500	5,450	5,250
ITMG	47,100	-13.26	-2.28	StrongBuy	15.9	45.8	123.0	48,150	46,950	46,750	46,400	45,750	47,750	48,400	48,750	48,950	47,000
JSMR	3,350	-5.63	1.52	OverBought	72.2	54.0	12.6	3,425	3,300	3,325	3,300	3,275	3,375	3,400	3,425	3,400	3,250
KLBF	3,600	8.27	-2.04	Trading	52.4	60.9	128.8	3,725	3,550	3,575	3,525	3,475	3,675	3,725	3,775	3,700	3,525
LSIP	2,375	-6.50	-1.04	Trading	55.6	53.9	31.1	2,450	2,350	2,375	2,375	2,350	2,400	2,425	2,425	2,425	2,350
MYOR	11,600	7.41	0.87	Trading	48.1	65.3	371.1	11,800	11,450	11,400	11,150	11,050	11,750	11,850	12,100	11,750	11,250
PGAS	3,975	-11.17	1.27	Trading	44.4	57.3	46.9	4,025	3,900	3,950	3,900	3,875	4,025	4,050	4,100	4,025	3,875
PTBA	22,200	-7.31	-0.45	OverSold	33.3	59.9	344.2	22,300	22,100	22,100	21,950	21,900	22,300	22,350	22,500	22,650	22,000
RALS	750	-12.79	-5.06	Trading Sell	-	100.0	-	800	745	20,870	20,870	20,870	20,870	20,870	20,870	790	740
SGRO	3,250	0.00	0.00	Trading	50.0	61.1	80.9	3,300	3,225	3,225	3,200	3,175	3,275	3,300	3,325	3,350	3,175
SMCB	2,250	1.12	5.88	StrongSell	94.7	69.9	63.4	2,325	2,125	2,200	2,150	2,125	2,275	2,300	2,350	2,250	2,075
SMGR	9,450	-4.06	-0.53	OverSold	33.3	54.9	141.5	9,600	9,450	9,400	9,350	9,250	9,550	9,650	9,700	9,650	9,450
SMRA	1,180	9.26	0.00	TakeProfit	71.4	60.0	32.5	1,230	1,140	1,160	1,140	1,120	1,200	1,220	1,240	1,200	1,130
TINS	2,825	-0.88	-0.88	OverBought	66.7	56.2	43.4	2,875	2,800	2,825	2,800	2,800	2,850	2,850	2,875	2,875	2,750
TLKM	7,450	-6.88	1.36	Trading	54.3	54.4	101.2	7,900	7,350	7,400	7,350	7,250	7,550	7,650	7,700	7,850	7,250
UNTR	22,950	-5.56	2.91	OverBought	79.0	56.5	90.7	23,550	22,500	22,750	22,550	22,350	23,150	23,350	23,550	23,350	22,000
UNVR	15,250	-4.98	1.67	OverBought	73.3	48.1	(147.7)	15,400	15,150	15,150	15,050	15,000	15,300	15,350	15,450	15,400	14,900

S1 = Support 1 S2 = Support 2 S3 = Support 3
 R1 = Resisten 1 R2 = Resisten 2 R2 = Resisten 2
 STO = Stochastic Oscillator
 RSI = Relative Strength Index
 MACD = Moving Average Convergence Divergence
 H-5 = 5 hari sebelumnya

RESEARCH TEAM

Andrian Tanuwijaya	Equity Analyst	(andrian.tanuwijaya@trimegah.com)
Hanel Topada Era Tania	Equity Analyst	(hanel.tania@trimegah.com)
T Heldy Arifien	Technical Analyst	(heldy@trimegah.com)
Rovandi	Research Assistant	(rovandi@trimegah.com)

EQUITY CAPITAL MARKET TEAM

Henry F. Jusuf	Head of Equities	(henry@trimegah.com)
Nathanael Benny Prasetyo	Head of Retail ECM	(benny.prasetyo@trimegah.com)
Windra Djulnaily	Pluit, Jakarta	(windra.djulnaily@trimegah.com)
Ariawan Anwar	Artha Graha, Jakarta	(ariawan.anwar@trimegah.com)
Ferry Zabur	Kelapa Gading, Jakarta	(ferry.zabur@trimegah.com)
Wirjawan Joesoef	Mangga Dua, Jakarta	(iwan@trimegah.com)
Lukman Abdul Azis	Kebon Jeruk, Jakarta	(lukman@trimegah.com)
Tutik Suciati	Semarang, Jawa Tengah	(tuty.s@trimegah.com)
Sonny Muljadi	Surabaya, Jawa Timur	(sonny.muljadi@trimegah.com)
Ni Luh Ketut Sri Agustini	Denpasar, Bali	(sri.agustini@trimegah.com)
Philip Fernando Suwandi	Makassar, Sulawesi Selatan	(philip.fs@trimegah.com)
agus.jatmiko	Balikpapan, Kalimantan Timur	(agus.jatmiko@trimegah.com)
Asep Saepudin	Bandung, Jawa Barat	(asep.saepudin@trimegah.com)
Asep Saepudin	Cirebon, Jawa Barat	(asep.saepudin@trimegah.com)
Very Wijaya	Medan, Sumatera Utara	(very.wijaya@trimegah.com)
Tantie Rivi Watie	Pekanbaru, Riau	(tantierw@trimegah.com)
Edwin Jayandaru	Solo, Jawa Tengah	(edwin.jayandaru@trimegah.com)
Edwin Jayandaru	Yogyakarta, Jawa Tengah	(edwin.jayandaru@trimegah.com)
Donny Kristanto Setiadi	Palembang, Sumatra Selatan	(donny.kristanto@trimegah.com)

PT Trimegah Securities Tbk
18th Fl, Artha Graha Building
Jl. Jend. Sudirman Kav. 52-53
Jakarta 12190, INDONESIA
Tel : (6221) 2924 9088 Fax : (6221) 2924 9163

DISCLAIMER

This report has been prepared by PT Trimegah Securities Tbk on behalf of itself and its affiliated companies and is provided for information purposes only. Under no circumstances is it to be used or considered as an offer to sell, or a solicitation of any offer to buy. This report has been produced independently and the forecasts, opinions and expectations contained herein are entirely those of Trimegah Securities.

While all reasonable care has been taken to ensure that information contained herein is not untrue or misleading at the time of publication, Trimegah Securities makes no representation as to its accuracy or completeness and it should not be relied upon as such. This report is provided solely for the information of clients of Trimegah Securities who are expected to make their own investment decisions without reliance on this report. Neither Trimegah Securities nor any officer or employee of Trimegah Securities accept any liability whatsoever for any direct or consequential loss arising from any use of this report or its contents. Trimegah Securities and/or persons connected with it may have acted upon or used the information herein contained, or the research or analysis on which it is based, before publication. Trimegah Securities may in future participate in an offering of the company's equity securities.