

IHSG

3.808,9

4,0

0,11%

Ulisan Pasar



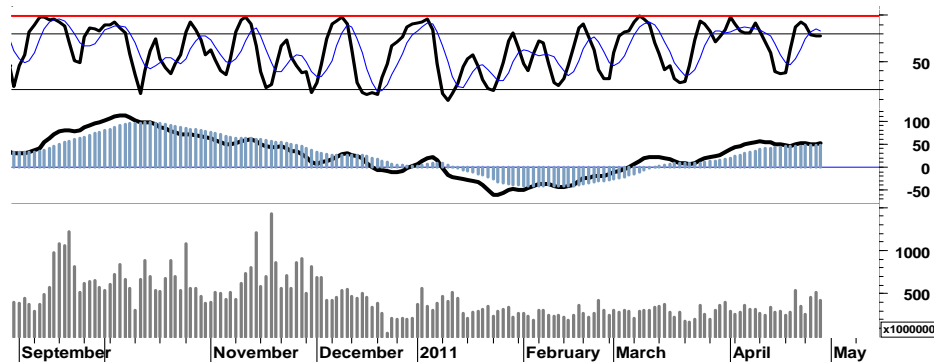
Ditengah maraknya sentimen positif dari kinerja keuangan emiten yang muncul, IHSG pada perdagangan kemarin mencoba bertahan pada area positif konsolidasi dengan kembali mencetak rekor harga tertinggi di level 3.824 di awal sesi perdagangan sebelum akhirnya ditutup di level 3.809. Juga di ikuti oleh aksi beli asing yang mencatat posisi pembelian bersih sebesar Rp371,864m.

Sejumlah saham unggulan yang mencatatkan kondisi kinerja keuangan yang positif seperti ASII, BBKA berhasil menahan laju tekanan pelemahan yang ditunjukkan oleh stochastic yang secara bertahap mulai keluar dari area overbought-nya serta meninggalkan signal bearish doji star ditengah penguatan IHSG kemarin

Signal negatif tersebut merupakan indikasi dalam upaya melanjutkan rally penguatannya, IHSG membutuhkan lebih dari sekedar sentimen positif untuk dapat memberikan tenaga serta

dorongan agar dapat keluar dari area konsolidasinya.

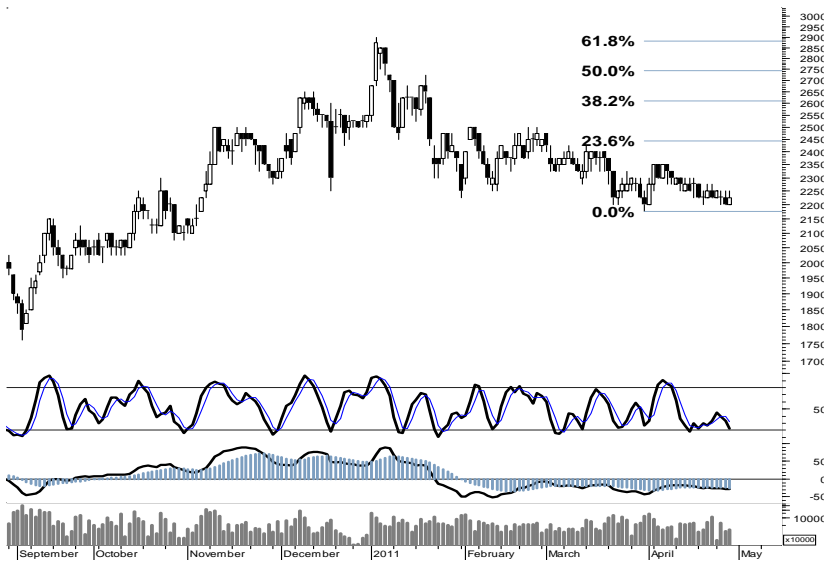
Kami perkirakan IHSG pada perdagangan hari ini, akan mencoba bergerak dalam interval 3.750 - 3.820.



S1	S2	R1	R2
3,790	3,770	3,825	3,845

Saham Pilihan

Saham	Harga (Rp)	Rekomendasi	Stochastic	RSI	BB Top	BB Bottom	S1	S2	R1	R2
ADRO	2,225	OverSold	22.22	42.74	2,275	2,200	2,200	2,175	2,275	2,300
ASII	55,600	Trading	54.35	52.22	56,300	53,950	55,250	54,900	56,200	56,550
BMRI	7,050	TakeProfit	74.07	63.07	7,200	7,000	6,950	6,850	7,350	7,450
BUMI	3,350	Trading	46.67	60.53	3,375	3,325	3,325	3,300	3,400	3,425
PGAS	3,975	OverBought	72.22	56.30	4,050	3,925	3,975	3,950	4,050	4,075
PTBA	22,400	TakeProfit	74.07	62.71	22,550	22,100	22,300	22,150	22,650	22,800



Ditutup di area pivot support 2.225, menempatkan ADRO pada kondisi berimbang.

Dengan terbatasnya ruang pelemahan, serta support kuat 2.200 yang mampu menahan laju tekanan selama 3 hari berturut-turut, ADRO memiliki peluang untuk menguji kembali penetrasi resistensi harga di level 2.275

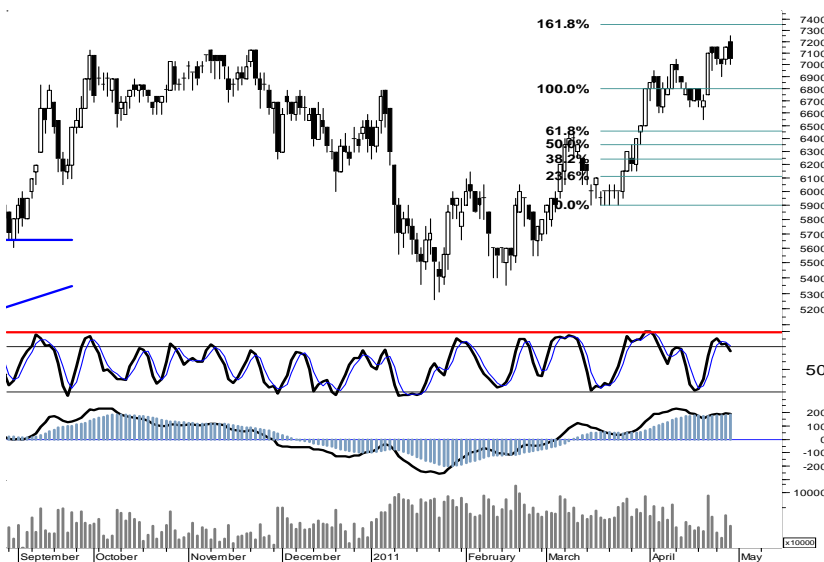
S1	S2	R1	R2
2,200	2,175	2,275	2,300



Signal doji star yang muncul pada perdagangan kemarin, dapat di abaikan apabila pada perdagangan hari ini ASII mampu bergerak menembus resistensi pada retracement 38% di level 56.350.

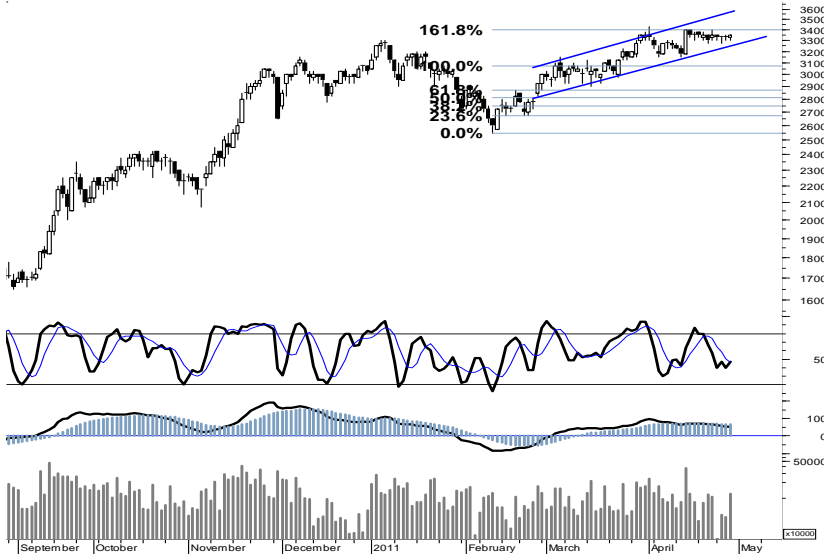
Apabila ASII mampu melanjutkan rally penguatan mencapai resistensi 56.200, maka peluang untuk kembali menguji resistensi pada retracement 62% di level 58.300 sebagai target double bottom, dapat di pastikan akan tercapai.

S1	S2	R1	R2
55,250	54,900	56,200	56,550



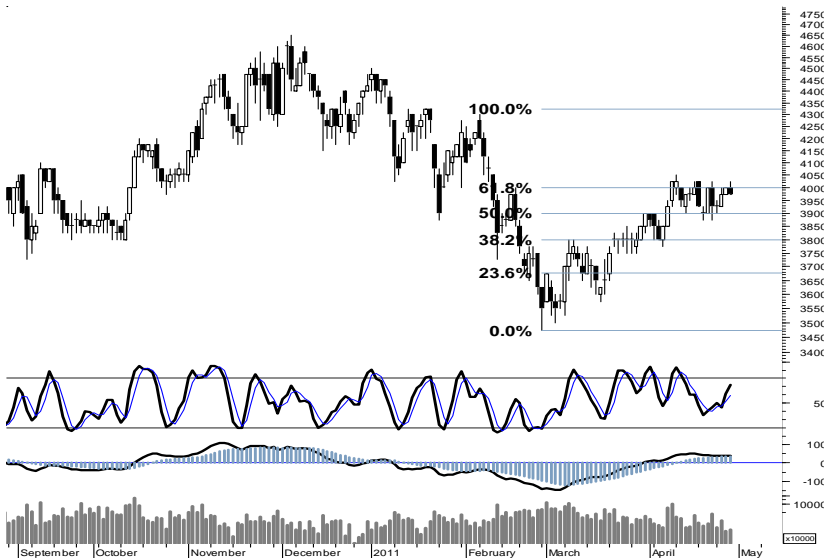
Waspada signal negatif yang muncul dari dark cloud cover (candle stick) juga pelemahan signal pada leading indicator yang ada, berpotensi menyeret BMRI menguji support harga 6.850/ 6.950.

S1	S2	R1	R2
6,950	6,850	7,350	7,450



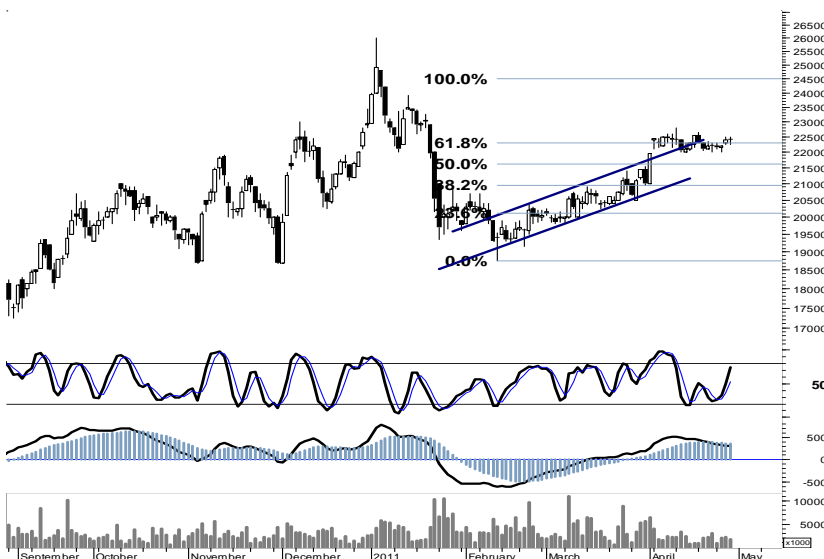
Ditutup pada area pivot support harga 3.350 mengakibatkan BUMI berada pada kondisi berimbang dan kurang menguntungkan. Waspada! potensi tekanan yang akan membawa BUMI menguji trend support 3.275, apabila gagal keluar dari area konsolidasi pada resisten 3.400.

S1	S2	R1	R2
3,325	3,300	3,400	3,425



Signal positif dari stochastic dan MACD merupakan peluang yang dapat mendorong PGAS kembali menguji penetrasi resistensi harga di level 4.000. Untuk selanjut keluar dari area konsolidasi dan mencapai sepenuhnya target siklus retracement di level 4.300.

S1	S2	R1	R2
3,975	3,950	4,050	4,075



Untuk dapat keluar dari area konsolidasi, dan merambah zona hijau, PTBA harus mampu melakukan penetrasi area resistensi harga 22.650.

Untuk saat ini, manfaatkan peluang gerak dalam interval harga 22.350 - 22.650.

S1	S2	R1	R2
22,300	22,150	22,650	22,800

TRADE DATA

JCI (IHSG) 3,808.9 4.0 0.11%

YTD (Rp)	2.8%	Volume (m) :	5,068
YTD (USD)	7.5%	Nilai (Rpbn) :	3,827
Moving Avg 20day	3,742	Mkt Cap (Rptr) :	3,396
Moving Avg 50day	3,614	Market P/E (x) :	16.4
Moving Avg 200day	3,468	Market Div. Yield (%) :	2.4

Indonesia & Sectors +/- (%) YTD (%)

MSCI Indonesia	4747.29	3.6	0.08	4.42
JII	528.15	0.7	0.14	-0.89
LQ45	680.89	-0.3	-0.04	2.95
JAKFIN Index	511.20	0.7	0.00	9.54
JAKINFR Index	794.43	-5.1	-0.01	-3.03
JAKMINE Index	3255.78	15.9	0.00	-0.56
JAKCONS Index	1117.52	1.2	0.00	2.09
JAKTRAD Index	493.44	1.1	0.00	4.08
JAKMIND Index	999.30	7.0	0.01	3.34
JAKBIND Index	401.93	-0.9	-0.00	3.79
JAKPROP Index	208.33	0.5	0.00	2.58
JAKAGRI Index	2178.02	2.9	0.00	-4.65

Regional Indices +/- (%) YTD (%)

MXWO	MSCI Word	1,384.9	13.6	0.99	8.19
SPX	S&P 500	1,360.5	4.8	0.36	8.18
US					
Dow Jones Industrial		12,763.3	72.4	0.57	10.24
Nasdaq	US	2,872.5	2.7	0.09	8.28
Europe					
EURO 50	Europe	283.0	0.9	0.33	2.62
FTSE	London	6,069.9	1.7	0.03	2.88
DAX	German	7,475.2	70.3	0.95	8.11
CAC	France	4,104.9	37.2	0.91	7.89
SMI	Swiss	6,516.2	43.8	0.68	1.25
BRIC					
BOVESPA	Brazil	65,673.2	-591.3	-0.89	-5.24
MICEX	Russia	1,749.7	4.7	0.27	3.65
SENSEX	India	19,292.0	-156.7	-0.81	-5.93
NIFTY	India	5,785.5	-48.4	-0.83	-5.69
SHCOMP	China	2,887.0	-38.4	-1.31	2.81
SZCOMP	China	1,183.7	-34.0	-2.80	-8.30

Commodities +/- (%) YTD (%)

CRB Index	366.31	0.5	0.13	10.07
Oil & Gas				
Crude Oil	112.86	0.1	0.09	23.51
Natural Gas	4.57	0.2	4.43	3.77
COAL (Rotterdam)	128.45	1.2	0.98	-2.25
COAL (Amsterdam)	128.75	1.8	1.43	2.22
COAL (Australia,wk)	122.80	0.0	0.00	0.33
Industrial Metals				
Alumunium	2,763.8	22.3	0.81	12.38
Nickel	26,850	220	0.83	8.48
Tin	32,050	50	0.16	19.14
Precious Metal				
Gold	1,531.20	14.1	0.93	7.72
Silver	47.52	1.6	3.40	53.74
Soft Commodities				
CPO (Malaysia)	3,391.00	21.0	0.62	-11.09
CPO (Netherlands)	1,145.00	5.0	0.44	-10.89
Rubber	5,383.86	152.6	2.92	7.81
Corn	723.00	-29.3	-3.89	14.94
Wheat	743.00	-34.0	-4.38	-6.45
Soybeans	1,350.25	-27.8	-2.01	-3.12
Rice (Indonesia)	6,600.00	0.0	0.00	-7.04

Developed ASIA

Nikkei	Japan	9,849.7	157.9	1.63	-3.71
TPX	Japan	851.9	12.0	1.43	-5.22
HIS	Hong kong	23,805.6	-87.2	-0.37	3.34
KOSPI	S.Korea	2,208.4	1.7	0.07	7.67
TAIEX	Taiwan	9,040.8	-8.5	-0.09	0.76
FSSTI	Singapore	3,185.0	2.3	0.07	-0.16

ASEAN

SET	Thailand	1,092.3	-9.0	-0.82	5.77
PCOMP	Philippines	4,278.8	-42.5	-0.98	1.85
KLCI	Malaysia	1,535.3	5.4	0.35	1.08
VNINDEX	Vietnam	472.9	3.6	0.77	-2.42

Currency +/- (%) YTD (%)

EURUSD	Euro	1.482	0.003	0.23	10.74
GBPUSD	United Kingdom	1.663	0.000	0.03	6.53
USDCHF	Switzerland	0.874	-0.001	-0.11	-6.58
USDCAD	Canada	0.951	0.001	0.09	-4.75
AUDUSD	Australia	1.093	0.006	0.52	6.80
NZDUSD	New Zealand	0.803	-0.006	-0.68	2.86
USDJPY	Japan	81.5	-0.620	-0.75	0.52
USDCNY	China	6.502	-0.010	-0.16	-1.60
USDHKD	Hongkong	7.769	-0.002	-0.02	-0.06
USDSGD	Singapore	1.227	-0.002	-0.19	-4.36
Rupiah	Indonesia	8,581.0	-47.000	-0.54	-4.61

Winners

Stock	Price	(%)	Stock	Price	(%)
PTRO	35,400	20.00	EMTK	1,500	-6.25
BTPN	3,050	17.31	TOWR	10,500	-4.55
BIPI	136	12.40	BSDE	920	-2.13
TSPC	1,820	7.06	ISAT	5,200	-1.89
ADMF	12,200	3.39	BNII	620	-1.59
BBCA	7,600	1.33	BMRI	7,050	-1.40
ADRO	2,225	1.14	BBNI	4,050	-1.22
INCO	5,050	1.00	SMGR	9,450	-1.05
ASII	55,600	0.82	TLKM	7,650	-0.65
BUMI	3,350	0.75	PGAS	3,975	-0.62

Losers

Value

Value (Rpbn)	Volume (Lot)	Freq (x)
BUMI 409,766	ENRG 1,572,104	ENRG 3,692
BMRI 154,436	ELTY 351,950	BIPI 2,763
BBRI 153,694	BIPI 350,522	CPIN 2,733
ENRG 120,321	DEWA 318,421	GREN 2,501
BJBR 100,493	TRUB 288,039	BJBR 2,260
ASII 89,726	APLN 285,280	RICY 2,232
KLBF 77,925	BUMI 245,643	MRAT 2,201
ITMG 70,997	ASRI 236,959	EMDE 1,934
ADRO 69,616	SIPD 214,507	BUMI 1,915
CPIN 68,285	BNBR 178,521	APLN 1,821

Code	Last	Ytd Chg(%)	H-5 Chg (%)	Rekomendasi	STO	RSI	MACD	Bollinger Band		Support			Resistance			H-5	
								Top	Bottom	1	2	3	1	2	3	Highest	Lowest
AALI	23,150	-13.62	0.87	OverBought	69.4	59.8	153.4	23,250	22,850	23,050	22,900	22,800	23,300	23,400	23,550	23,250	22,650
ACES	2,650	-7.02	2.91	Trading	47.1	60.4	21.2	2,675	2,600	2,625	2,600	2,575	2,675	2,700	2,725	2,700	2,550
ADRO	2,225	-16.82	-1.11	OverSold	22.2	42.7	(27.5)	2,275	2,200	2,200	2,175	2,150	2,250	2,275	2,300	2,275	2,200
AKRA	1,710	0.59	7.55	StrongSell	95.7	75.6	37.1	1,770	1,580	1,670	1,630	1,610	1,730	1,750	1,790	1,710	1,540
ANTM	2,300	-7.07	0.00	OverSold	36.4	51.8	10.3	2,350	2,250	2,275	2,250	2,225	2,325	2,350	2,375	2,350	2,250
ASII	55,600	2.21	0.82	Trading	54.3	52.2	(96.0)	56,300	53,950	55,250	54,900	54,600	55,900	56,200	56,550	56,000	53,750
BBCA	7,600	17.83	0.66	TakeProfit	60.9	74.0	195.9	7,650	7,500	7,550	7,500	7,450	7,650	7,700	7,750	7,700	7,350
BBNI	4,050	6.58	0.62	Trading	59.3	61.1	81.7	4,175	4,050	4,025	4,000	3,950	4,100	4,150	4,175	4,175	3,925
BBRI	6,550	26.57	-0.76	TakeProfit	66.7	74.5	292.6	6,600	6,450	6,500	6,400	6,350	6,650	6,700	6,800	6,650	6,300
BBTN	1,710	2.40	-3.39	OverSold	26.3	56.6	49.3	1,800	1,700	1,700	1,680	1,650	1,750	1,780	1,800	1,790	1,710
BDMN	6,200	12.73	-1.59	Accumulate	37.5	37.8	(56.6)	6,400	6,100	6,150	6,100	6,050	6,250	6,300	6,350	6,400	6,100
BISI	1,690	-9.63	-5.06	OverSold	20.8	51.3	45.5	1,810	1,620	1,670	1,640	1,610	1,730	1,760	1,790	1,820	1,640
BMRI	7,050	9.30	-0.70	TakeProfit	74.1	63.1	190.5	7,200	7,000	6,950	6,850	6,700	7,200	7,350	7,450	7,250	6,750
BSDE	920	4.55	3.37	TakeProfit	74.1	71.8	36.0	945	910	915	910	895	935	950	955	960	860
BTEL	385	63.83	0.00	TakeProfit	75.0	72.1	14.2	385	385	382	379	377	387	389	392	390	375
BUMI	3,350	7.20	1.52	Trading	46.7	60.5	55.9	3,375	3,325	3,325	3,300	3,275	3,375	3,400	3,425	3,400	3,275
CTRA	390	11.43	2.63	OverBought	62.5	59.2	10.0	402	375	384	377	369	399	407	414	400	370
ELTY	144	-10.56	3.60	TakeProfit	72.4	62.5	0.5	148	139	142	140	137	147	150	152	148	137
EXCL	6,750	28.57	8.00	StrongSell	80.4	75.2	230.8	7,050	6,200	6,500	6,250	5,950	7,050	7,350	7,600	7,100	6,000
GGRM	40,250	-1.95	-2.19	StrongBuy	16.5	47.9	36.5	41,200	39,800	40,050	39,800	39,450	40,650	41,000	41,250	41,450	40,150
HEXA	5,700	-21.38	0.00	OverBought	60.0	43.0	(143.9)	5,800	5,650	5,650	5,600	5,550	5,750	5,800	5,850	5,800	5,550
INCO	5,050	1.51	3.06	StrongSell	95.5	66.1	42.2	5,150	4,900	5,050	5,000	5,000	5,100	5,100	5,150	5,050	4,825
INDF	5,600	13.13	0.00	TakeProfit	72.2	68.8	128.8	5,650	5,600	5,550	5,500	5,450	5,650	5,700	5,750	5,700	5,400
INDY	4,025	-21.08	1.90	StrongSell	80.0	53.1	11.4	4,125	3,950	4,000	3,950	3,900	4,100	4,150	4,200	4,100	3,925
INTP	17,100	6.54	-2.56	OverSold	28.6	59.7	470.4	17,850	16,700	17,000	16,850	16,700	17,300	17,450	17,600	17,900	16,950
ISAT	5,200	-4.59	-4.59	StrongBuy	14.3	45.5	27.0	5,450	5,150	5,150	5,100	5,000	5,300	5,400	5,450	5,450	5,150
ITMG	47,050	-13.35	-1.98	StrongBuy	12.2	45.7	13.3	47,850	46,650	46,750	46,400	46,000	47,500	47,900	48,250	48,300	46,800
JSMR	3,300	-7.04	-0.75	OverSold	33.3	48.5	5.6	3,400	3,275	3,275	3,250	3,200	3,350	3,400	3,425	3,400	3,275
KLBF	3,575	7.52	-1.38	OverSold	35.0	58.6	106.0	3,675	3,525	3,550	3,525	3,500	3,600	3,625	3,650	3,700	3,525
LSIP	2,375	-6.50	-2.06	OverSold	37.5	54.4	28.8	2,425	2,350	2,350	2,325	2,300	2,400	2,425	2,450	2,425	2,350
MYOR	11,350	5.09	-3.40	OverBought	64.7	55.5	324.2	11,800	11,350	11,050	10,700	10,350	11,750	12,100	12,450	11,750	11,050
PGAS	3,975	-11.17	-0.62	OverBought	72.2	56.3	45.7	4,050	3,925	3,975	3,950	3,925	4,025	4,050	4,075	4,025	3,875
PTBA	22,400	-6.47	0.90	TakeProfit	74.1	62.7	318.0	22,550	22,100	22,300	22,150	22,050	22,550	22,650	22,800	22,500	22,000
RALS	750	-12.79	-5.06	OverSold	23.5	41.6	(7.9)	785	725	745	740	735	755	760	765	790	730
SGRO	3,225	-0.77	-0.77	OverBought	60.0	59.0	73.0	3,275	3,225	3,225	3,200	3,175	3,275	3,300	3,325	3,275	3,200
SMCB	2,275	2.25	5.81	StrongSell	95.0	69.3	73.4	2,350	2,200	2,250	2,225	2,200	2,300	2,325	2,350	2,300	2,125
SMGR	9,450	-4.06	-1.05	OverSold	28.6	54.1	121.9	9,600	9,400	9,400	9,300	9,200	9,600	9,700	9,800	9,650	9,400
SMRA	1,240	14.81	3.33	StrongSell	88.0	67.6	37.6	1,270	1,160	1,230	1,210	1,200	1,260	1,270	1,290	1,250	1,140
TINS	2,875	0.88	0.88	StrongSell	81.8	60.9	46.8	2,925	2,825	2,850	2,825	2,800	2,900	2,925	2,950	2,875	2,800
TLKM	7,650	-4.38	-1.92	Trading	46.4	59.4	122.8	7,850	7,450	7,550	7,450	7,350	7,750	7,850	7,950	7,850	7,400
UNTR	23,350	-3.91	1.74	TakeProfit	79.0	61.7	170.6	23,500	22,950	23,150	22,950	22,750	23,550	23,750	23,950	23,500	22,350
UNVR	15,300	-4.67	0.00	OverBought	65.2	49.2	(128.7)	15,400	15,200	15,200	15,100	15,050	15,350	15,400	15,500	15,400	15,050

S1 = Support 1 S2 = Support 2 S3 = Support 3
 R1 = Resisten 1 R2 = Resisten 2 R2 = Resisten 2
 STO = Stochastic Oscillator
 RSI = Relative Strength Index
 MACD = Moving Average Convergence Divergence
 H-5 = 5 hari sebelumnya

RESEARCH TEAM

Andrian Tanuwijaya	Equity Analyst	(andrian.tanuwijaya@trimegah.com)
Hanel Topada Era Tania	Equity Analyst	(hanel.tania@trimegah.com)
T Heldy Arifien	Technical Analyst	(heldy@trimegah.com)
Rovandi	Research Assistant	(rovandi@trimegah.com)

EQUITY CAPITAL MARKET TEAM

Henry F. Jusuf	Head of Equities	(henry@trimegah.com)
Nathanael Benny Prasetyo	Head of Retail ECM	(benny.prasetyo@trimegah.com)
Windra Djulnaily	Pluit, Jakarta	(windra.djulnaily@trimegah.com)
Ariawan Anwar	Artha Graha, Jakarta	(ariawan.anwar@trimegah.com)
Ferry Zabur	Kelapa Gading, Jakarta	(ferry.zabur@trimegah.com)
Wirjawan Joesoef	Mangga Dua, Jakarta	(iwan@trimegah.com)
Lukman Abdul Azis	Kebon Jeruk, Jakarta	(lukman@trimegah.com)
Tutik Suciati	Semarang, Jawa Tengah	(tuty.s@trimegah.com)
Sonny Muljadi	Surabaya, Jawa Timur	(sonny.muljadi@trimegah.com)
Ni luh Ketut Sri Agustini	Denpasar, Bali	(sri.agustini@trimegah.com)
Philip Fernando Suwandi	Makassar, Sulawesi Selatan	(philip.fs@trimegah.com)
agus.jatmiko	Balikpapan, Kalimantan Timur	(agus.jatmiko@trimegah.com)
Asep Saepudin	Bandung, Jawa Barat	(asep.saepudin@trimegah.com)
Asep Saepudin	Cirebon, Jawa Barat	(asep.saepudin@trimegah.com)
Very Wijaya	Medan, Sumatera Utara	(very.wijaya@trimegah.com)
Tantie Rivi Watie	Pekanbaru, Riau	(tantierw@trimegah.com)
Edwin Jayandaru	Solo, Jawa Tengah	(edwin.jayandaru@trimegah.com)
Edwin Jayandaru	Yogyakarta, Jawa Tengah	(edwin.jayandaru@trimegah.com)
Donny Kristanto Setiadi	Palembang, Sumatra Selatan	(donny.kristanto@trimegah.com)

PT Trimegah Securities Tbk
18th Fl, Artha Graha Building
Jl. Jend. Sudirman Kav. 52-53
Jakarta 12190, INDONESIA
Tel : (6221) 2924 9088 Fax : (6221) 2924 9163

DISCLAIMER

This report has been prepared by PT Trimegah Securities Tbk on behalf of itself and its affiliated companies and is provided for information purposes only. Under no circumstances is it to be used or considered as an offer to sell, or a solicitation of any offer to buy. This report has been produced independently and the forecasts, opinions and expectations contained herein are entirely those of Trimegah Securities.

While all reasonable care has been taken to ensure that information contained herein is not untrue or misleading at the time of publication, Trimegah Securities makes no representation as to its accuracy or completeness and it should not be relied upon as such. This report is provided solely for the information of clients of Trimegah Securities who are expected to make their own investment decisions without reliance on this report. Neither Trimegah Securities nor any officer or employee of Trimegah Securities accept any liability whatsoever for any direct or consequential loss arising from any use of this report or its contents. Trimegah Securities and/or persons connected with it may have acted upon or used the information herein contained, or the research or analysis on which it is based, before publication. Trimegah Securities may in future participate in an offering of the company's equity securities.