

IHSG 3,790.8 -39.1 -1.02%

Ulisan Pasar



Di penghujung bulan Oktober 2011, aksi profit taking menahan laju penguatan pada IHSG untuk melanjutkan rallynya. Pada perdagangan kemarin IHSG ditutup melemah 39point, dilevel 3.791.

Hal tersebut merupakan cerminan dari beberapa indikator teknikal, yang telah berada pada valuasi trading yang terbilang relatif tinggi. Dimana stochastic (5D) telah berada pada area overbought cenderung terdesak melemah, yang menggambarkan kekuatan IHSG mulai berkurang.

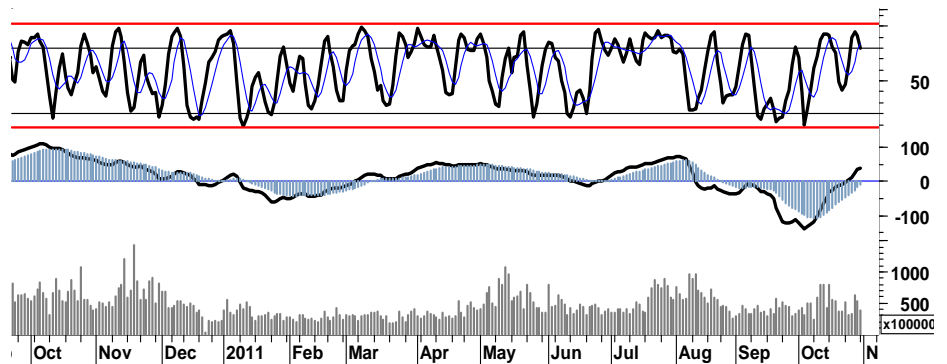
Pada saat yang bersamaan, para pelaku asing mencatatkan nilai tipis penjualan bersih sebesar Rp1,45miliar.

Pergerakan indeks acuan di Eropa kembali mengalami tekanan yang juga dipicu oleh aksi profit taking, DAX maupun CAC masing-masing terpuruk 3.2%. Demikian pula sejumlah bursa utama di Amerika seperti DJI, S&P500 serta Nasdaq mengalami pelemahan masing-masing sebesar 2,3%, 2,5% serta 1,9%.

Secara umum kondisi IHSG diperkirakan masih cukup mapan untuk berada dalam uptrend channel jangka pendek, dengan trend support channel 3.720 sebagai basis support.

Dengan demikian tekanan pelemahan yang akan terjadi pada perdagangan hari ini, merupakan peluang bagi para pelaku pasar untuk melakukan akumulasi pembelian.

Beberapa *lagging indicator*, menunjukkan terbukanya peluang serta potensi penguatan IHSG untuk melanjutkan penguatan menuju target resistensi terdekat 3.920 - 3.950. Pada perdagangan hari ini, kami perkirakan IHSG akan mencoba bergerak variatif dalam interval harga 3.720 - 3.810.



S1	S2	R1	R2
3,755	3,720	3,830	3,865

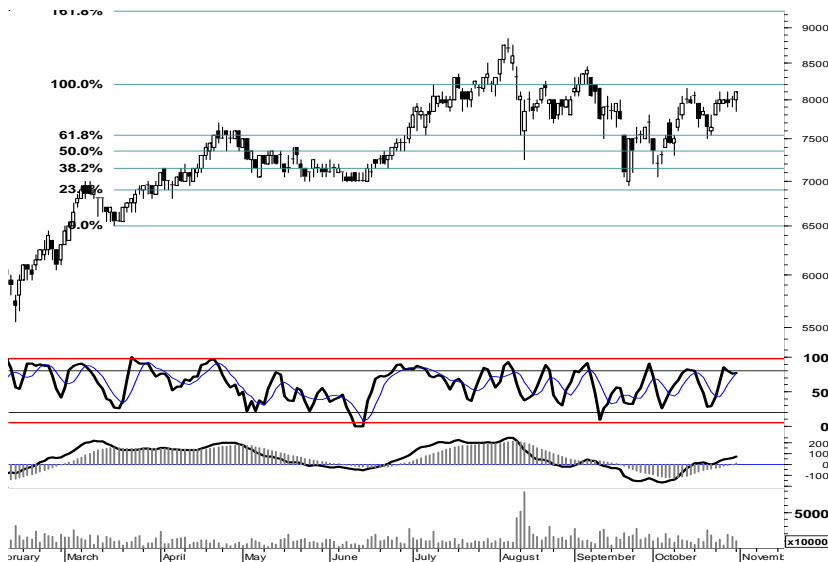
Saham Pilihan

Saham	Harga (Rp)	Rekomendasi	Stochastic	RSI	BB Top	BB Bottom	S1	S2	R1	R2
AISA	650	Trading	42.31	45.22	665	615	630	610	670	690
BBCA	8,100	Trading	77.27	59.32	8,150	7,950	7,950	7,800	8,300	8,450
EXCL	5,000	OverSold	34.88	48.48	5,575	4,825	4,925	4,850	5,200	5,275
INDF	5,250	OverSold	37.93	44.82	5,750	5,150	5,150	5,000	5,500	5,650
JSMR	3,850	OverSold	35.29	50.68	3,925	3,850	3,825	3,800	3,900	3,925
UNVR	15,650	OverSold	29.17	44.96	16,300	15,400	15,500	15,350	16,150	16,300



650 merupakan level harga yang menjadi penentu bagi AISA. Basis indikator stochastic maupun macd menunjukkan adanya peluang bagi AISA untuk melakukan pergerakan dalam rentang harga 630-690.

S1	S2	R1	R2
630	610	670	690



Secara umum BBCA berada pada kondisi strong-bullish. Dengan bertumpu pada basis trend-support channel 7.750, setiap pelemahan saham tersebut merupakan peluang akumulasi.

Pada perdagangan hari ini, yang menjadi perhatian adalah kondisi overbought pada peak area resisten harga 8.450.

S1	S2	R1	R2
7,950	7,800	8,300	8,450



Ditutup dalam kondisi berimbang, EXCL memiliki peluang untuk bergerak positif menguji resistensi 5.200 dengan berbasis support 4.925 sebagai stop-loss.

S1	S2	R1	R2
4,925	4,850	5,200	5,275

INDF

5,250

OverSold



Dalam kondisi perimbangan pivot support pada level 5.230 memberi peluang bagi INDF untuk bergerak positif menguji penetrasi resisten harga pada retracement 50% di level 5.400.

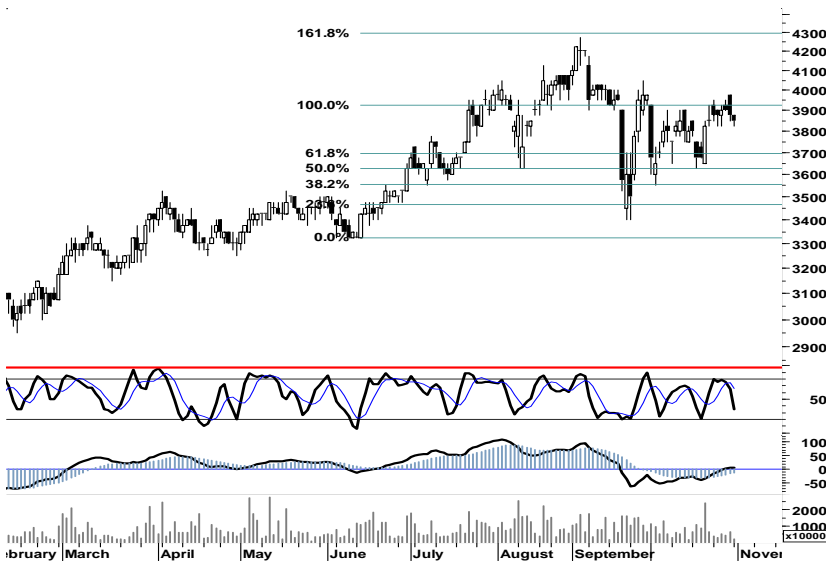
Akumulasi saham tersebut, apabila terjadi penekanan harga menuju target support celah di level 4.975-5.000.

S1	S2	R1	R2
5,150	5,000	5,500	5,650

JSMR

3,850

OverSold



Tekanan pelemahan yang akan membawa JSMR menguji arah support 3.700 merupakan peluang akumulasi saham tersebut.

S1	S2	R1	R2
3,825	3,800	3,900	3,925

UNVR

15,650

OverSold



Cermati peluang pembalikan arah pada trend-support chanel 15.500, seiring terbatasnya ruang tekanan pada saham UNVR.

S1	S2	R1	R2
15,500	15,350	16,150	16,300

TRADE DATA

JCI (IHSG) 3,790.8 -39.1 -1.02%

YTD (Rp)	2.4%	Volume (m) :	5,340
YTD (USD)	3.8%	Nilai (Rpbn) :	3,328
Moving Avg 20day	3,613	Mkt Cap (Rpbn) :	3,439
Moving Avg 50day	3,699	Market P/E (x) :	16.2
Moving Avg 200day	3,719	Market Div. Yield (%) :	2.4

Indonesia & Sectors +/- (%) YTD (%)

MSCI Indonesia	4,773.8	-55.7	-1.15	5.00
JII	530.2	-7.3	-1.36	-0.51
LQ45	675.6	-8.3	-1.21	2.15
JAKFIN Index	509.9	-1.3	-0.00	9.27
JAKINFR Index	703.7	-7.1	-0.01	-14.10
JAKMINE Index	2,725.1	-68.0	-0.02	-16.77
JAKCONS Index	1,241.5	-20.5	-0.02	13.42
JAKTRAD Index	529.2	-5.5	-0.01	11.63
JAKMIND Index	1,236.1	-14.1	-0.01	27.83
JAKBIND Index	396.3	-3.8	-0.01	2.35
JAKPROP Index	215.1	-0.9	-0.00	5.90
JAKAGRI Index	2,155.0	2.5	0.00	-5.66

Commodities +/- (%) YTD (%)

CRB Index	319.84	-3.2	-1.00	-3.89
Oil & Gas				
Crude Oil	93.19	-0.1	-0.14	1.98
Natural Gas	3.93	0.0	0.28	-10.69
COAL (Rotterdam)	118.00	-0.8	-0.63	-10.20
COAL (Amsterdam)	117.62	-1.4	-1.16	-6.61
COAL (Australia,wk)	116.45	-2.3	-1.98	-4.86
Industrial Metals				
Alumunium	2,202.25	-27.3	-1.22	-10.45
Nickel	19,575	-125	-0.63	-20.91
Tin	22,000	-100	-0.45	-18.22
Prescious Metal				
Gold	1,725.20	-22.0	-1.26	21.37
Silver	34.35	-0.9	-2.65	11.14
Soft Commodities				
CPO (Malaysia)	2,942.00	-29.0	-0.98	-22.86
CPO (Netherlands)	1,022.50	-10.0	-0.97	-20.43
Rubber	3,853.14	-185.4	-4.59	-22.84
Corn	647.00	-8.0	-1.22	2.86
Wheat	628.25	-16.3	-2.52	-20.90
Soybeans	1,207.50	-9.5	-0.78	-13.36
Rice (Indonesia)	7,700.00	0.0	0.00	8.45

Winners

Stock	Price	(%)	Stock	Price	(%)
JKON	1,000	11.11	ICBP	5,300	-5.36
TFCO	650	10.17	ADRO	2,025	-4.71
SCMA	6,350	5.83	BUMI	2,350	-4.08
BHIT	250	4.17	CPIN	2,675	-3.60
BKSL	285	3.64	PGAS	2,950	-3.28
MEDC	2,325	3.33	INDF	5,250	-2.78
AALI	21,450	2.14	UNTR	24,600	-2.38
ISAT	5,350	1.90	BYAN	18,650	-2.36
BBCA	8,100	1.25	GGRM	58,600	-2.33
SMGR	9,500	1.06	ASII	69,000	-1.29

Losers

Stock	Price	(%)	Stock	Price	(%)
ICBP	5,300	-5.36	ADRO	2,025	-4.71
ADRO	2,025	-4.71	BUMI	2,350	-4.08
BUMI	2,350	-4.08	CPIN	2,675	-3.60
CPIN	2,675	-3.60	PGAS	2,950	-3.28
PGAS	2,950	-3.28	INDF	5,250	-2.78
INDF	5,250	-2.78	UNTR	24,600	-2.38
UNTR	24,600	-2.38	BYAN	18,650	-2.36
BYAN	18,650	-2.36	GGRM	58,600	-2.33
GGRM	58,600	-2.33	ASII	69,000	-1.29
ASII	69,000	-1.29			

Regional Indices +/- (%) YTD (%)

MXWO	MSCI Word	1,217.3	-36.9	-2.94	-4.90
SPX	S&P 500	1,253.3	-31.8	-2.47	-0.35
US					
Dow Jones Industrial		11,955.0	-276.1	-2.26	3.26
Nasdaq	US	2,684.4	-52.7	-1.93	1.19
Europe					
EURO 50	Europe	243.5	-5.5	-2.22	-11.72
FTSE	London	5,544.2	-158.0	-2.77	-6.03
DAX	German	6,141.3	-204.8	-3.23	-11.18
CAC	France	3,242.8	-105.8	-3.16	-14.77
SMI	Swiss	5,731.3	-121.4	-2.07	-10.95
BRIC					
BOVESPA	Brazil	58,338.4	-1,174.7	-1.97	-15.82
MICEX	Russia	1,498.6	-28.0	-1.83	-11.22
SENSEX	India	17,705.0	-99.8	-0.56	-13.67
NIFTY	India	5,326.6	-34.1	-0.64	-13.17
SHCOMP	China	2,468.3	-5.2	-0.21	-12.10
SZCOMP	China	1,040.9	5.0	0.49	-19.36

Developed ASIA

Nikkei	Japan	8,988.4	-62.1	-0.69	-12.13
TPX	Japan	764.1	-7.4	-0.96	-14.99
HIS	Hong kong	19,864.9	-154.4	-0.77	-13.76
KOSPI	S.Korea	1,909.0	-20.5	-1.06	-6.92
TAIEX	Taiwan	7,587.7	-28.4	-0.37	-15.43
FSSTI	Singapore	2,855.8	-49.9	-1.72	-10.48

ASEAN

SET	Thailand	974.8	1.6	0.16	-5.62
PCOMP	Philippines	4,333.7	0.0	0.00	3.16
KLCI	Malaysia	1,491.9	10.1	0.68	-1.78
VNINDEX	Vietnam	420.8	-1.3	-0.30	-13.17

Currency +/- (%) YTD (%)

EURUSD	Euro	1.386	-0.029	-2.04	3.54
GBPUSD	United Kingdom	1.609	-0.004	-0.27	3.04
USDCHF	Switzerland	0.877	0.014	1.59	-6.22
USDCAD	Canada	1.001	0.009	0.92	0.28
AUDUSD	Australia	1.053	-0.017	-1.59	2.90
NZDUSD	New Zealand	0.807	-0.014	-1.74	3.40
USDJPY	Japan	78.2	2.350	3.10	-3.64
USDCNY	China	6.355	-0.005	-0.08	-3.82
USDHKD	Hongkong	7.768	0.005	0.06	-0.07
USDSGD	Singapore	1.255	0.013	1.01	-2.25
Rupiah	Indonesia	8,853.0	38.000	0.43	-1.59

Value (Rpbn) Volume (Lot) Freq (x)

BUMI	363,560	ENRG	1,695,232	BHIT	7,075
BBRI	356,710	BNBR	1,020,949	TMPI	5,826
ASII	330,430	BHIT	543,856	ENRG	4,819
PGAS	223,355	DEWA	516,950	BUMI	4,354
BMRI	218,282	KIJA	499,137	BBRI	3,819
BBNI	176,787	ELTY	447,496	ADRO	3,715
ADRO	164,018	BUMI	297,539	INDF	3,644
INDF	163,990	BKSL	226,464	ANTM	3,253
TLKM	157,031	BORN	214,853	PGAS	3,199
ENRG	147,434	ASRI	204,460	BMRI	2,741

Code	Last	Ytd Chg(%)	H-5 Chg (%)	Rekomendasi	STO	RSI	MACD	Bollinger Band		Support			Resistance			H-5	
								Top	Bottom	1	2	3	1	2	3	Highest	Lowest
AALI	21,450	-19.96	8.06	TakeProfit	74.2	63.1	318.2	22,150	20,100	21,200	20,950	20,650	21,750	22,050	22,300	22,200	19,500
ACES	3,375	18.42	-0.74	OverBought	69.7	53.3	15.5	3,450	3,250	3,200	3,025	2,925	3,475	3,575	3,750	3,400	3,125
ADRO	2,025	-24.30	3.85	OverBought	68.5	56.5	53.0	2,175	1,975	2,000	1,975	1,900	2,100	2,175	2,200	2,150	1,940
AISA	650	-16.67	-4.41	Trading	42.3	45.2	(13.5)	665	615	630	610	600	660	670	690	690	600
ANTM	1,790	-27.68	5.92	StrongSell	80.0	59.8	31.0	1,880	1,700	1,770	1,750	1,710	1,830	1,870	1,890	1,850	1,690
ASII	69,000	26.84	1.40	TakeProfit	86.9	57.3	1,237.1	70,250	68,000	67,700	66,400	65,300	70,100	71,200	72,500	70,000	67,300
BBCA	8,100	25.58	1.89	Trading	77.3	59.3	79.8	8,150	7,950	7,950	7,800	7,700	8,200	8,300	8,450	8,100	7,800
BBNI	4,025	5.92	0.63	Trading	66.7	59.9	82.4	4,100	4,000	4,000	3,950	3,925	4,075	4,100	4,150	4,125	3,900
BBRI	6,750	30.43	3.85	StrongSell	81.8	61.1	164.0	6,950	6,550	6,650	6,550	6,450	6,850	6,950	7,050	6,900	6,400
BDMN	4,975	-9.55	0.51	Trading	48.3	55.7	72.5	5,025	4,950	4,925	4,875	4,825	5,025	5,075	5,125	5,150	4,900
BISI	1,020	-45.45	0.99	Trading	44.1	50.3	(4.9)	1,080	1,000	1,000	980	960	1,040	1,060	1,080	1,100	1,000
BMRI	7,150	10.85	3.62	StrongSell	88.6	61.6	190.3	7,450	6,800	7,050	6,950	6,850	7,250	7,350	7,450	7,300	6,600
BSDE	920	4.55	1.10	Trading	46.7	53.7	10.2	935	915	905	890	875	935	950	965	950	900
BTEL	295	25.53	1.72	OverBought	69.2	42.5	(10.4)	298	283	289	282	274	304	312	319	305	275
BUMI	2,350	-24.80	5.62	OverBought	77.5	55.9	28.0	2,550	2,200	2,300	2,250	2,175	2,425	2,500	2,550	2,500	2,175
BWPT	1,170	-10.69	-1.68	Trading	54.5	57.4	27.8	1,240	1,170	1,160	1,150	1,120	1,200	1,230	1,240	1,230	1,160
ELTY	116	-27.95	-2.52	Trading	53.1	47.4	(0.7)	125	115	114	112	108	120	124	126	126	115
EXCL	5,000	-4.76	-4.76	OverSold	34.9	48.5	65.4	5,575	4,825	4,925	4,850	4,750	5,100	5,200	5,275	5,700	4,925
GGRM	58,600	42.75	3.35	OverBought	73.6	58.5	1,103.3	61,150	56,800	57,850	57,100	56,050	59,650	60,700	61,450	61,150	55,050
HEXA	7,850	8.28	4.67	StrongSell	82.9	60.2	41.0	8,150	7,450	7,800	7,750	7,650	7,950	8,050	8,100	7,950	7,350
HRUM	7,850	-16.93	2.61	Trading	58.9	54.7	137.0	8,350	7,650	7,750	7,600	7,400	8,100	8,300	8,450	8,500	7,600
INCO	3,650	-26.63	12.31	StrongSell	94.4	62.6	69.3	3,925	3,225	3,600	3,550	3,475	3,725	3,800	3,850	3,725	3,225
INDF	5,250	6.06	-6.25	OverSold	37.9	44.8	39.0	5,750	5,150	5,150	5,000	4,900	5,400	5,500	5,650	5,750	5,100
INDY	2,850	-44.12	9.62	OverBought	75.9	57.8	28.9	3,075	2,550	2,775	2,700	2,600	2,950	3,050	3,125	3,050	2,525
INTP	16,350	1.87	9.36	StrongSell	100.0	66.5	566.8	17,100	15,150	16,100	15,850	15,700	16,500	16,650	16,900	16,350	14,600
ISAT	5,350	-1.83	7.00	StrongSell	91.1	61.8	(14.0)	5,500	5,050	5,200	5,050	4,950	5,450	5,550	5,700	5,350	4,950
ITMG	44,650	-17.77	8.24	StrongSell	93.9	60.9	602.8	46,600	40,700	44,000	43,350	42,800	45,200	45,750	46,400	45,100	40,650
JSMR	3,850	8.45	-0.65	OverSold	35.3	50.7	1.5	3,925	3,850	3,825	3,800	3,775	3,875	3,900	3,925	3,975	3,825
KLBF	3,475	4.51	0.00	OverBought	66.7	55.6	41.0	3,550	3,450	3,425	3,375	3,325	3,525	3,575	3,625	3,550	3,400
LSIP	2,200	-13.39	6.02	OverBought	76.7	58.1	26.3	2,325	2,075	2,175	2,150	2,125	2,225	2,250	2,275	2,300	2,025
MAPI	4,925	77.48	3.14	OverBought	70.4	58.8	132.4	5,125	4,775	4,700	4,450	4,275	5,125	5,300	5,550	5,150	4,625
PGAS	2,950	-34.08	4.42	OverBought	76.7	56.1	62.5	3,175	2,775	2,925	2,900	2,825	3,025	3,100	3,125	3,100	2,725
PTBA	18,350	-23.38	6.07	StrongSell	88.8	58.9	347.6	19,450	17,050	18,150	17,950	17,600	18,700	19,050	19,250	18,800	17,100
RALS	670	-22.09	0.00	Trading Sell	58.3	45.3	(13.0)	695	655	20,870	20,870	20,870	20,870	20,870	20,870	690	650
SGRO	3,025	-6.92	3.42	OverBought	63.6	52.9	(2.9)	3,175	2,900	2,975	2,925	2,875	3,075	3,125	3,175	3,175	2,875
SMCB	1,930	-13.26	3.21	StrongSell	82.4	58.7	21.2	1,990	1,860	1,910	1,880	1,860	1,960	1,980	2,010	1,960	1,850
SMGR	9,500	-3.55	1.60	StrongSell	89.2	61.9	228.3	9,700	9,000	9,450	9,400	9,350	9,550	9,600	9,650	9,500	8,900
SMRA	1,170	8.33	2.63	StrongSell	86.4	59.1	13.0	1,180	1,130	1,150	1,120	1,110	1,190	1,200	1,230	1,170	1,090
TINS	1,990	-30.18	6.42	StrongSell	83.3	58.8	14.3	2,100	1,870	1,970	1,940	1,910	2,020	2,050	2,080	2,050	1,850
TLKM	7,400	-7.50	2.07	OverBought	78.3	53.2	11.4	7,550	7,350	7,300	7,200	7,100	7,500	7,600	7,700	7,550	7,100
UNTR	24,600	1.23	2.71	TakeProfit	74.1	62.2	684.2	25,550	24,100	24,300	23,950	23,500	25,100	25,550	25,900	25,750	23,100
UNVR	15,650	-2.49	-3.10	OverSold	29.2	45.0	(58.5)	16,300	15,400	15,500	15,350	15,100	15,900	16,150	16,300	16,400	15,500

S1 = Support 1 S2 = Support 2 S3 = Support 3
 R1 = Resisten 1 R2 = Resisten 2 R2 = Resisten 2
 STO = Stochastic Oscillator
 RSI = Relative Strength Index
 MACD = Moving Average Convergence Divergence
 H-5 = 5 hari sebelumnya

RESEARCH TEAM

Andrian Tanuwijaya	Equity Analyst	(andrian.tanuwijaya@trimegah.com)
Hanel Topada Era Tania	Equity Analyst	(hanel.tania@trimegah.com)
Paul Raymond Widjaja	Equity Analyst	(paul.widjaja@trimegah.com)
Michele Gabriela	Equity Analyst	(michele.gabriela@trimegah.com)
T Hedy Arifien	Technical Analyst	(hedy@trimegah.com)
Rovandi	Research Assistant	(rovandi@trimegah.com)

EQUITY CAPITAL MARKET TEAM

Nathanael Benny Prasetyo	Head of Retail ECM	(benny.prasetyo@trimegah.com)
Windra Djulnaily	Pluit, Jakarta	(windra.djulnaily@trimegah.com)
Ariawan Anwar	Artha Graha, Jakarta	(ariawan.anwar@trimegah.com)
Ferry Zabur	Kelapa Gading, Jakarta	(ferry.zabur@trimegah.com)
Wirjawan Joesoef	Mangga Dua, Jakarta	(iwan@trimegah.com)
Lukman Abdul Azis	Kebon Jeruk, Jakarta	(lukman@trimegah.com)
Untung Wijaya	Semarang, Jawa Tengah	(untung.wijaya@trimegah.com)
Sonny Muljadi	Surabaya, Jawa Timur	(sonny.muljadi@trimegah.com)
Ni luh Ketut Sri Agustini	Denpasar, Bali	(sri.agustini@trimegah.com)
Philip Fernando Suwandi	Makassar, Sulawesi Selatan	(philip.fs@trimegah.com)
agus.jatmiko	Balikpapan, Kalimantan Timur	(agus.jatmiko@trimegah.com)
Asep Saepudin	Bandung, Jawa Barat	(asep.saepudin@trimegah.com)
Ariffianto	Cirebon, Jawa Barat	(ariffianto@trimegah.com)
Very Wijaya	Medan, Sumatera Utara	(very.wijaya@trimegah.com)
Tantie Rivi Watie	Pekanbaru, Riau	(tantierw@trimegah.com)
Agus Bambang Suseno	Solo, Jawa Tengah	(agus.suseno@trimegah.com)
Untung Wijaya	Yogyakarta, Jawa Tengah	(untung.wijaya@trimegah.com)
Donny Kristanto Setiadi	Palembang, Sumatra Selatan	(donny.kristanto@trimegah.com)
Rr. Putri Ayu Erikusuma	Malang, Jawa Timur	(putri.ayu@trimegah.com)

PT Trimegah Securities Tbk
18th Fl, Artha Graha Building
Jl. Jend. Sudirman Kav. 52-53
Jakarta 12190, INDONESIA
Tel : (6221) 2924 9088 Fax : (6221) 2924 9163

DISCLAIMER

This report has been prepared by PT Trimegah Securities Tbk on behalf of itself and its affiliated companies and is provided for information purposes only. Under no circumstances is it to be used or considered as an offer to sell, or a solicitation of any offer to buy. This report has been produced independently and the forecasts, opinions and expectations contained herein are entirely those of Trimegah Securities.

While all reasonable care has been taken to ensure that information contained herein is not untrue or misleading at the time of publication, Trimegah Securities makes no representation as to its accuracy or completeness and it should not be relied upon as such. This report is provided solely for the information of clients of Trimegah Securities who are expected to make their own investment decisions without reliance on this report. Neither Trimegah Securities nor any officer or employee of Trimegah Securities accept any liability whatsoever for any direct or consequential loss arising from any use of this report or its contents. Trimegah Securities and/or persons connected with it may have acted upon or used the information herein contained, or the research or analysis on which it is based, before publication. Trimegah Securities may in future participate in an offering of the company's equity securities.