

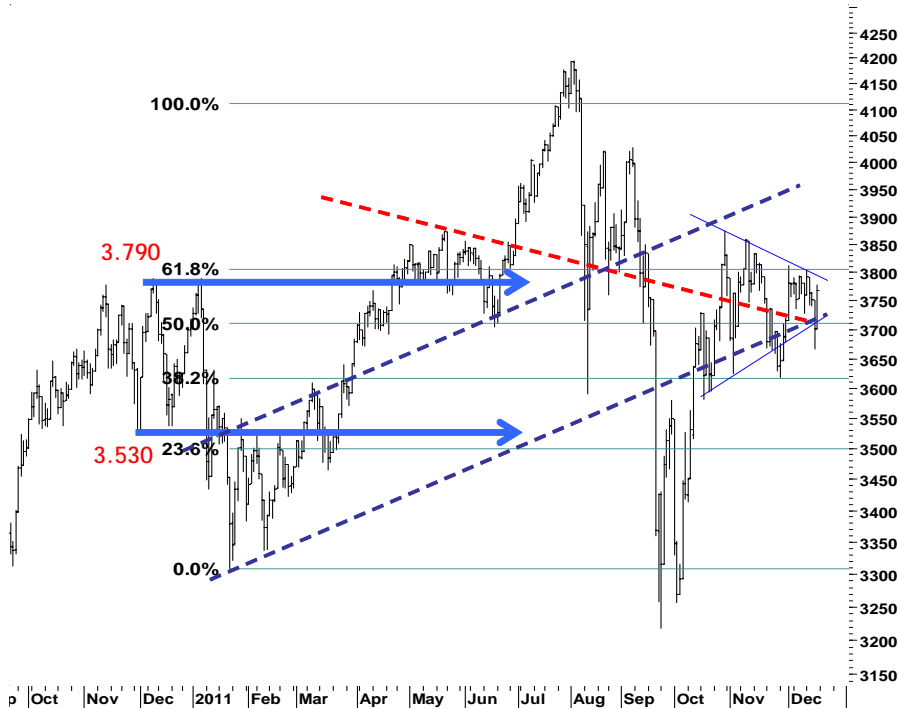
IHSG

3.768,4

66,8

1,81%

Ulisan Pasar

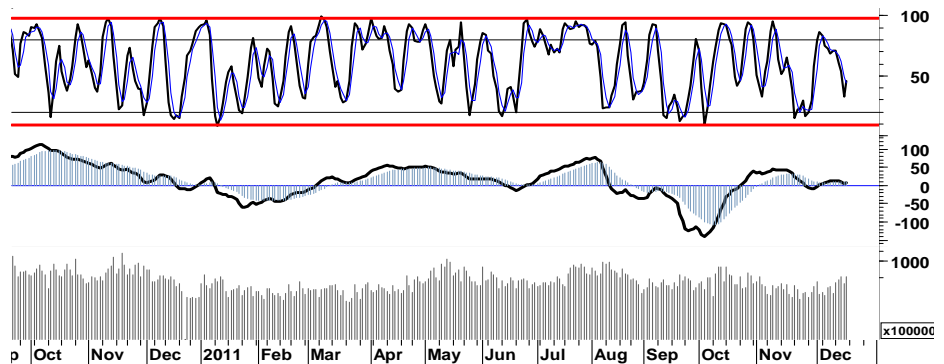


Dinaikannya peringkat Indonesia ke dalam Investment Grade oleh lembaga pemeringkat Fitch, memberikan angin segar bagi IHSG di penghujung pekan perdagangan yang lalu dengan mencetak nilai positif 66,8 poin dan ditutup pada daerah support harga 3.768. Mayoritas saham unggulan seperti ASII, BBCA, BBRI, BMRI dan UNTR yang pada perdagangan sebelumnya terkoreksi cukup dalam, menjadi fokus akumulasi para pelaku saham. Perputaran saham yang terjadi cukup ramai, dengan total kejadian tercatat kurang lebih 137 kali transaksi. IHSG bergerak mengayun (swing) cukup lebar, sebesar 5% dengan merangkai kembali kekuatan untuk melakukan penetrasi 50% Fibonacci Retracement di level 3.705.

Sementara dilain sisi, wacana penurunan peringkat negara-negara di Eropa menjadi perhatian khusus para pelaku pasar global. Minimnya sentimen positif di Eropa, aktifitas perdagangan di bursa-bursa utama negara tersebut cenderung melemah kembali. DAX maupun CAC ditutup terkoreksi -0,5%, -0,9%.

Yang juga berdampak kurang baik terhadap bursa-bursa utama di Amerika, dimana DJI melemah tipis -0,02%, sementara S&P500 dan Nasdaq menguat masing-masing sebesar 0,3% dan 0,6%.

Signal positif yang muncul pada stochastic di area positif trading, dan kembali bergerak di atas MA 50. Membuka peluang bagi IHSG untuk melanjutkan penguatan, memanfaatkan euforia positif peringkat investasi. Di awal minggu ini, IHSG akan mencoba bergerak dominan positif dalam rentang harga 3.750-3.810.



S1	S2	R1	R2
3,720	3,675	3,800	3,825

Saham Pilihan

Saham	Harga (Rp)	Rekomendasi	Stochastic	RSI	BB Top	BB Bottom	S1	S2	R1	R2
ADRO	1,840	StrongBuy	19.23	38.43	1,930	1,780	1,830	1,820	1,860	1,870
ASII	71,150	OverSold	22.19	50.32	76,100	67,000	69,950	68,750	73,250	74,450
BWPT	1,170	OverSold	33.33	50.19	1,190	1,140	1,150	1,130	1,190	1,210
GGRM	61,700	OverSold	36.82	49.42	63,050	60,150	61,000	60,300	62,600	63,300
ISAT	5,450	OverSold	33.33	53.31	5,650	5,150	5,400	5,350	5,550	5,600
UNTR	25,300	Trading	50.00	54.32	25,550	23,950	24,550	23,750	26,150	26,950

ADRO

1,840

StrongBuy



Untuk dapat keluar dari area negatif, signal positif stochastic (5d) diharapkan mampu mendorong berlanjutnya penguatan ADRO menguji resistensi berikut pada area 1.860-1.870.

S1	S2	R1	R2
1,830	1,820	1,860	1,870

ASII

71,150

OverSold



Secara umum ASII dalam kondisi strong bullish, dengan basis trend support 67.700 - 67.800.

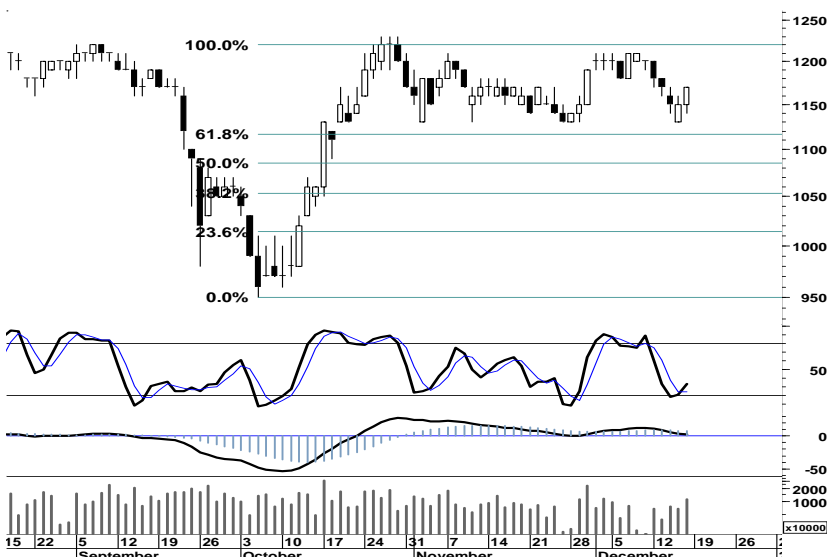
Pada perdagangan di awal pekan ini, kami perkirakan ASII akan mencoba bergerak menguji arah resistensi harga 73.250.

S1	S2	R1	R2
69,950	68,750	73,250	74,450

BWPT

1,170

OverSold



Munculnya signal positif serta golden cross pada stochastic oscillator, membuka peluang bagi BPWT untuk melanjutkan penguatan harga menguji penetrasi resistensi 1.190.

S1	S2	R1	R2
1,150	1,130	1,190	1,210

GGRM

61,700

OverSold



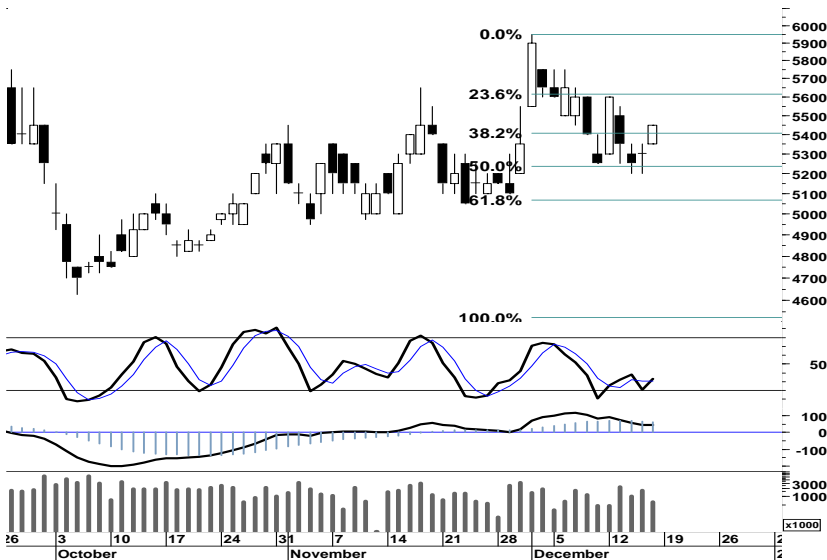
Meskipun lemahnya signal positif yang muncul pada GGRM, namun basis trend-support pada 61,8% Fibonacci Retracement di harga 60.450 membuka peluang bagi saham tersebut untuk bergerak positif menguji resistensi 62.600.

S1	S2	R1	R2
61,000	60,300	62,600	63,300

ISAT

5,450

OverSold



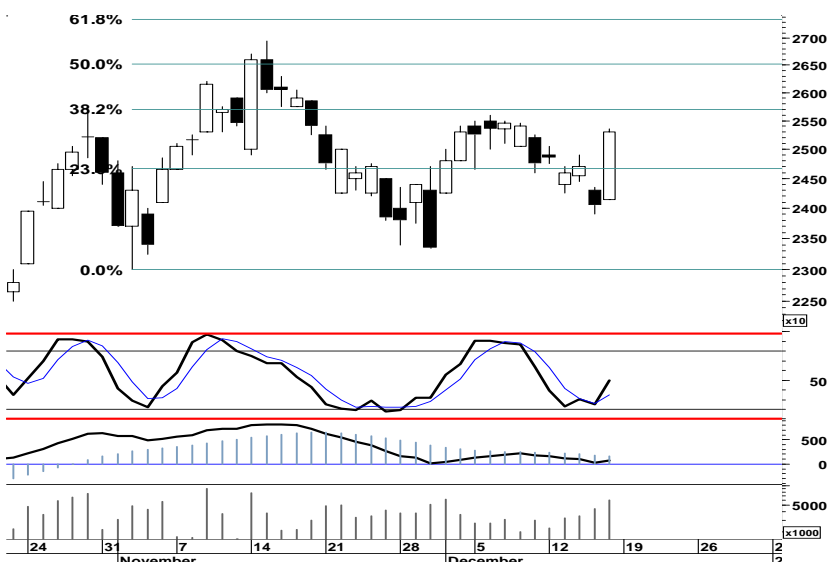
Leading indicator yang memberikan signal positif pada saham ISAT, mengindikasikan adanya peluang untuk ISAT melanjutkan rally penguatannya menguji resistensi berikut pada level 5.550.

S1	S2	R1	R2
5,400	5,350	5,550	5,600

UNTR

25,300

Trading



Secara umum UNTR berada dalam kondisi strong bullish, dengan uptrend channel support 24.000 sebagai basis bertahanan pelemahan harga.

Signal positif yang tercermin pada stochastic (5d), memberikan ruang bagi UNTR untuk bergerak positif pada perdagangan hari ini serta menguji resistensi harga pada level 26.150.

S1	S2	R1	R2
24,550	23,750	26,150	26,950

TRADE DATA

JCI (IHSG) 3,768.4 66.8 1.81%

YTD (Rp)	1.8% Volume (m) :	5,364
YTD (USD)	0.2% Nilai (Rpbn) :	3,328
Moving Avg 20day	3,735 Mkt Cap (Rpbn) :	3,439
Moving Avg 50day	3,729 Market P/E (x) :	16.2
Moving Avg 200day	3,768 Market Div. Yield (%) :	2.4

Indonesia & Sectors +/- (%) YTD (%)

MSCI Indonesia	4,698.6	106.1	2.31	3.34
JII	522.5	8.1	1.57	-1.95
LQ45	663.3	13.2	2.04	0.29
JAKFIN Index	493.4	14.4	0.03	5.73
JAKINFR Index	689.4	3.9	0.01	-15.85
JAKMINE Index	2,521.2	29.2	0.01	-23.00
JAKCONS Index	1,273.3	7.9	0.01	16.32
JAKTRAD Index	570.8	11.7	0.02	20.40
JAKMIND Index	1,267.3	38.0	0.03	31.05
JAKBIND Index	397.6	6.6	0.02	2.68
JAKPROP Index	229.0	4.2	0.02	12.74
JAKAGRI Index	2,114.9	-6.5	-0.00	-7.42

Commodities +/- (%) YTD (%)

CRB Index	295.00	0.6	0.19	-11.36
Oil & Gas				
Crude Oil	93.53	-0.3	-0.36	2.35
Natural Gas	3.13	0.0	0.00	-29.01
COAL (Rotterdam)	110.00	0.2	0.14	-16.29
COAL (Amsterdam)	109.85	-1.2	-1.08	-12.78
COAL (Australia,wk)	109.55	0.0	0.00	-10.50
Industrial Metals				
Aluminium	1,994.00	26.0	1.32	-18.92
Nickel	18,550	655	3.66	-25.05
Tin	18,800	200	1.08	-30.11
Precious Metal				
Gold	1,597.90	20.7	1.31	12.42
Silver	29.62	0.4	1.33	-4.16
Soft Commodities				
CPO (Malaysia)	2,986.00	14.0	0.47	-21.71
CPO (Netherlands)	985.00	-12.5	-1.25	-23.35
Rubber	3,298.61	55.6	1.71	-33.95
Corn	583.00	4.0	0.69	-7.31
Wheat	583.75	4.5	0.78	-26.50
Soybeans	1,130.00	18.3	1.64	-18.92
Rice (Indonesia)	8,000.00	0.0	0.00	12.68

Winners

Stock	Price	(%)	Stock	Price	(%)
UNTR	25,300	5.20	IDKM	2,700	-3.57
BBRI	6,800	4.62	TBIG	2,250	-2.17
ITMG	37,450	4.03	AAAL	20,600	-1.90
BMRI	6,700	3.88	JSMR	4,150	-1.78
BBNI	3,900	3.31	CTRA	570	-1.72
ASII	71,150	3.04	EMTK	3,000	-1.64
INTP	16,500	2.80	KRAS	830	-1.19
BBCA	8,000	2.56	LSIP	2,150	-1.15
PGAS	3,125	2.46	UNVR	17,300	-1.14
GGRM	61,700	1.82	EXCL	4,350	-0.57

Losers

Stock	Price	(%)	Stock	Price	(%)
IDKM	2,700	-3.57	UNTR	25,300	5.20
TBIG	2,250	-2.17	BBRI	6,800	4.62
AAAL	20,600	-1.90	ITMG	37,450	4.03
JSMR	4,150	-1.78	BMRI	6,700	3.88
CTRA	570	-1.72	BBNI	3,900	3.31
EMTK	3,000	-1.64	ASII	71,150	3.04
KRAS	830	-1.19	INTP	16,500	2.80
LSIP	2,150	-1.15	BBCA	8,000	2.56
UNVR	17,300	-1.14	PGAS	3,125	2.46
EXCL	4,350	-0.57	GGRM	61,700	1.82

Regional Indices +/- (%) YTD (%)

MXWO	MSCI World	1,146.5	3.6	0.32	-10.44
SPX	S&P 500	1,219.7	3.9	0.32	-3.02
US					
Dow Jones Industrial		11,866.4	-2.4	-0.02	2.50
Nasdaq	US	2,555.3	14.3	0.56	-3.68
Europe					
EURO 50	Europe	233.7	-1.0	-0.43	-15.26
FTSE	London	5,387.3	-13.5	-0.25	-8.69
DAX	Germany	5,701.8	-28.8	-0.50	-17.54
CAC	France	2,972.3	-26.4	-0.88	-21.88
SMI	Swiss	5,733.5	-50.6	-0.88	-10.92
BRIC					
BOVESPA	Brazil	56,096.9	-234.2	-0.42	-19.06
MICEX	Russia	1,383.4	-10.2	-0.73	-18.04
SENSEX	India	15,491.4	-345.1	-2.18	-24.47
NIFTY	India	4,651.6	-94.8	-2.00	-24.17
SHCOMP	China	2,224.8	43.9	2.01	-20.77
SZCOMP	China	910.4	24.3	2.75	-29.48

Developed ASIA

Nikkei	Japan	8,401.7	24.3	0.29	-17.86
TPX	Japan	723.6	-1.5	-0.20	-19.50
HIS	Hong kong	18,285.4	258.5	1.43	-20.62
KOSPI	S. Korea	1,840.0	20.9	1.15	-10.29
TAIEX	Taiwan	6,785.1	20.5	0.30	-24.38
FSSTI	Singapore	2,659.2	24.0	0.91	-16.64

ASEAN

SET	Thailand	1,034.1	9.9	0.97	0.13
PCOMP	Philippines	4,304.9	22.3	0.52	2.47
KLCI	Malaysia	1,466.2	2.1	0.14	-3.47
VNINDEX	Vietnam	366.0	1.5	0.43	-24.48

Currency +/- (%) YTD (%)

EURUSD	Euro	1.305	0.003	0.23	-2.53
GBPUSD	United Kingdom	1.555	0.003	0.20	-0.43
USDCHF	Switzerland	0.936	-0.004	-0.44	0.07
USDCAD	Canada	1.038	0.003	0.31	4.04
AUDUSD	Australia	0.998	0.006	0.61	-2.44
NZDUSD	New Zealand	0.762	0.008	1.11	-2.36
USDJPY	Japan	77.8	-0.100	-0.13	-4.14
USDCNY	China	6.351	-0.023	-0.35	-3.88
USDHKD	Hongkong	7.785	0.004	0.06	0.16
USDSGD	Singapore	1.306	-0.002	-0.16	1.73
Rupiah	Indonesia	9,035.0	-56.000	-0.62	0.43

Value (Rpbn)	Volume (Lot)	Freq (x)
BMRI 447,154	ELTY 1,099,169	TMPI 6,458
ASII 294,757	ENRG 857,579	MRAT 5,859
BBRI 267,131	PNLF 524,043	CASS 4,857
BBCA 192,725	TMPI 309,457	BMRI 4,231
SMGR 177,018	BNBR 276,641	BBRI 3,092
ADRO 120,588	DILD 234,152	PYFA 3,070
BBNI 120,386	ASRI 216,568	DILD 2,941
INDF 92,466	MDLN 206,181	DKFT 2,746
INTP 86,705	MYRXP 161,179	ASII 2,529
HRUM 78,319	BIPI 159,153	ELTY 2,510

Code	Last	Ytd Chg(%)	H-5 Chg (%)	Rekomendasi	STO	RSI	MACD	Bollinger Band		Support			Resistance			H-5	
								Top	Bottom	1	2	3	1	2	3	Highest	Lowest
AALI	20,600	-23.13	-5.50	Trading	12.5	42.0	(67.0)	21,700	20,050	20,350	20,100	19,650	21,050	21,500	21,750	22,200	20,500
ACES	3,875	35.96	-0.64	StrongSell	87.5	58.2	73.8	3,925	3,875	3,875	3,875	3,850	3,900	3,925	3,925	3,900	3,850
ADRO	1,840	-31.21	-4.17	StrongBuy	19.2	38.4	(29.7)	1,930	1,780	1,830	1,820	1,810	1,850	1,860	1,870	1,980	1,790
AISA	560	-28.21	-1.75	Trading	33.3	36.0	(15.1)	575	555	555	550	545	565	570	575	580	550
ANTM	1,610	-34.95	-1.83	Trading	28.6	39.1	(17.5)	1,650	1,590	1,600	1,590	1,580	1,620	1,630	1,640	1,660	1,580
ASII	71,150	30.79	-2.60	OverSold	22.2	50.3	676.7	76,100	67,000	69,950	68,750	67,700	72,200	73,250	74,450	75,000	68,300
ASRI	460	50.82	1.10	Trading	55.0	56.5	3.2	462	450	454	447	444	464	467	474	470	435
BBCA	8,000	24.03	1.27	Trading	43.5	52.6	(3.2)	8,100	7,750	7,850	7,650	7,450	8,250	8,450	8,650	8,250	7,700
BBNI	3,900	2.63	-0.64	Trading	42.1	52.6	(1.6)	4,000	3,725	3,850	3,800	3,750	3,950	4,000	4,050	4,025	3,675
BBRI	6,800	31.40	1.49	OverBought	62.5	54.9	(11.0)	6,900	6,450	6,700	6,550	6,500	6,900	6,950	7,100	6,800	6,350
BDMN	4,250	-22.73	-2.30	Trading	36.4	34.6	(124.2)	4,400	4,125	4,225	4,175	4,150	4,300	4,325	4,375	4,400	4,100
BISI	900	-51.87	1.12	Trading	40.0	46.6	(12.3)	925	885	890	880	870	910	920	930	940	870
BKSL	260	140.74	-1.89	Trading	46.7	48.7	0.1	271	256	255	250	245	265	270	275	275	250
BMRI	6,700	3.88	1.52	Trading	59.3	51.0	(75.4)	6,750	6,400	6,550	6,400	6,300	6,800	6,900	7,050	6,750	6,200
BSDE	980	11.36	11.36	StrongSell	80.0	60.9	4.3	1,000	915	955	930	915	995	1,010	1,035	980	870
BTEL	255	8.51	-5.56	Trading	36.4	37.7	(3.5)	270	250	250	245	240	260	265	270	270	250
BUMI	2,250	-28.00	2.27	StrongSell	93.3	57.0	10.2	2,325	2,175	2,225	2,175	2,150	2,300	2,325	2,375	2,275	2,125
BWPT	1,170	-10.69	-2.50	OverSold	33.3	50.2	1.3	1,190	1,140	1,150	1,130	1,120	1,180	1,190	1,210	1,200	1,130
CPIN	2,325	29.89	0.00	Trading	57.9	42.8	(68.2)	2,375	2,250	2,275	2,225	2,175	2,375	2,425	2,475	2,350	2,175
ELTY	124	-22.98	19.23	StrongSell	92.4	67.7	1.5	136	107	122	119	116	128	131	134	128	103
EXCL	4,350	-17.14	-4.40	Trading	14.3	30.9	(139.5)	4,600	4,275	4,300	4,250	4,175	4,425	4,500	4,550	4,600	4,300
GGRM	61,700	50.30	-1.28	OverSold	36.8	49.4	370.4	63,050	60,150	61,000	60,300	59,850	62,150	62,600	63,300	63,750	59,700
HEXA	8,650	19.31	1.76	StrongSell	81.8	64.1	135.0	8,700	8,600	8,600	8,550	8,500	8,700	8,750	8,800	8,700	8,450
HRUM	6,900	-26.98	-3.50	Trading	17.6	37.8	(190.0)	7,300	6,700	6,800	6,700	6,600	7,000	7,100	7,200	7,350	6,750
INCO	3,075	-38.19	-1.60	Trading	42.9	40.2	(61.6)	3,175	3,000	3,050	3,025	3,000	3,100	3,125	3,150	3,175	2,975
INDF	4,575	-7.58	-3.68	Trading	17.1	32.8	(109.1)	4,700	4,500	4,575	4,550	4,525	4,625	4,650	4,675	4,800	4,500
INDY	2,125	-58.33	-2.30	Accumulate	31.6	37.4	(76.2)	2,175	2,075	2,100	2,075	2,050	2,150	2,175	2,200	2,225	2,050
INTP	16,500	2.80	7.84	TakeProfit	78.6	63.9	245.8	16,900	15,550	16,100	15,700	15,350	16,850	17,200	17,600	16,800	15,100
ISAT	5,450	0.00	3.81	OverSold	33.3	53.3	52.0	5,650	5,150	5,400	5,350	5,300	5,500	5,550	5,600	5,600	5,200
ITMG	37,450	-31.03	-1.58	Accumulate	34.6	38.8	(1,329.7)	38,600	35,550	36,550	35,650	35,200	37,900	38,350	39,250	39,000	34,950
JPFA	4,050	27.56	-2.41	Accumulate	29.2	27.9	(153.8)	4,225	4,025	4,000	3,950	3,850	4,150	4,250	4,300	4,225	4,025
JSMR	4,150	16.90	0.61	TakeProfit	75.0	62.3	89.0	4,300	4,150	4,125	4,100	4,025	4,225	4,300	4,325	4,275	3,950
KLBF	3,400	2.26	-0.73	OverSold	36.8	45.2	(14.6)	3,475	3,325	3,350	3,300	3,275	3,425	3,450	3,500	3,475	3,300
LSIP	2,150	-15.35	-6.52	Accumulate	31.0	39.1	(13.9)	2,300	2,075	2,125	2,075	2,025	2,225	2,275	2,325	2,325	2,075
MAIN	940	-69.68	2.17	OverBought	61.5	47.8	(17.1)	950	895	920	900	890	950	960	980	940	890
MAPI	5,300	90.99	0.95	Trading	40.4	54.0	(10.2)	5,400	4,950	5,150	5,000	4,900	5,400	5,500	5,650	5,350	4,950
MBAI	12,100	-22.93	-5.10	Trading	45.8	40.9	(90.7)	13,100	12,050	11,900	11,700	11,350	12,450	12,800	13,000	12,750	12,050
PGAS	3,125	-30.17	-0.79	Trading	47.4	54.1	31.7	3,200	3,050	3,075	3,025	2,975	3,175	3,225	3,275	3,175	3,000
PTBA	16,650	-30.48	-1.48	OverSold	37.0	40.3	(196.8)	17,250	16,350	16,450	16,250	16,050	16,850	17,050	17,250	17,200	16,350
RALS	660	-96.84	13.79	TakeProfit	77.8	64.4	(3.6)	675	560	615	570	535	695	730	775	680	570
SGRO	2,975	-8.46	-0.83	Trading	40.0	45.9	(11.3)	3,025	2,950	2,950	2,900	2,875	3,025	3,050	3,100	3,050	2,925
SIPD	53	-28.38	-3.64	Trading	41.7	41.2	(0.9)	56	53	52	50	48	56	58	60	56	52
SMCB	2,225	0.00	3.49	StrongSell	90.5	80.0	77.5	2,250	2,150	2,175	2,100	2,050	2,300	2,350	2,425	2,275	2,025
SMGR	10,350	5.08	8.38	TakeProfit	75.0	63.7	302.6	10,950	9,850	10,050	9,700	9,400	10,700	11,000	11,350	10,800	9,450
SMRA	1,220	12.96	8.93	TakeProfit	75.0	65.2	17.9	1,240	1,150	1,180	1,140	1,110	1,250	1,280	1,320	1,230	1,080
SSIA	620	-31.11	16.98	StrongSell	90.5	80.8	54.5	690	525	605	590	565	645	670	685	650	480
TINS	1,710	-40.00	0.59	OverBought	66.7	37.3	(35.2)	1,720	1,710	1,700	1,680	1,670	1,730	1,740	1,760	1,730	1,680
TLKM	7,150	-10.63	-0.69	OverSold	38.9	42.9	(59.2)	7,250	7,050	7,150	7,150	7,100	7,200	7,250	7,250	7,300	7,000
UNTR	25,300	4.12	2.22	Trading	50.0	54.3	24.1	25,550	23,950	24,550	23,750	23,350	25,750	26,150	26,950	25,350	23,900
UNVR	17,300	7.79	-1.42	Trading	40.0	52.3	278.9	17,750	17,200	17,200	17,050	16,800	17,600	17,850	18,000	17,950	17,100

S1 = Support 1 **S2** = Support 2 **S3** = Support 3
R1 = Resisten 1 **R2** = Resisten 2 **R2** = Resisten 2
STO = Stochastic Oscillator
RSI = Relative Strength Index
MACD = Moving Average Convergence Divergence
H-5 = 5 hari sebelumnya

RESEARCH TEAM

Michele Gabriela	Equity Analyst	(michele.gabriela@trimegah.com)
T Hedy Arifien	Technical Analyst	(heldy@trimegah.com)
Rovandi	Research Assistant	(rovandi@trimegah.com)

EQUITY CAPITAL MARKET TEAM

Nathanael Benny Prasetyo	Head of Retail ECM	(benny.prasetyo@trimegah.com)
Windra Djulnaily	Pluit, Jakarta	(windra.djulnaily@trimegah.com)
Ariawan Anwar	Artha Graha, Jakarta	(ariawan.anwar@trimegah.com)
Ferry Zabur	Kelapa Gading, Jakarta	(ferry.zabur@trimegah.com)
Wirjawan Joesoef	Mangga Dua, Jakarta	(iwan@trimegah.com)
Lukman Abdul Azis	Kebon Jeruk, Jakarta	(lukman@trimegah.com)
Untung Wijaya	Semarang, Jawa Tengah	(untung.wijaya@trimegah.com)
Sonny Muljadi	Surabaya, Jawa Timur	(sonny.muljadi@trimegah.com)
Ni Made Dwi Hapsari Wijayanti	Denpasar, Bali	(dwihapsari.wijayanti@trimegah.com)
Philip Fernando Suwandi	Makassar, Sulawesi Selatan	(philip.fs@trimegah.com)
agus.jatmiko	Balikpapan, Kalimantan Timur	(agus.jatmiko@trimegah.com)
Asep Saepudin	Bandung, Jawa Barat	(asep.saepudin@trimegah.com)
Ariffianto	Cirebon, Jawa Barat	(ariffianto@trimegah.com)
Very Wijaya	Medan, Sumatera Utara	(very.wijaya@trimegah.com)
Tantie Rivi Watie	Pekanbaru, Riau	(tantierw@trimegah.com)
Agus Bambang Suseno	Solo, Jawa Tengah	(agus.suseno@trimegah.com)
Untung Wijaya	Yogyakarta, Jawa Tengah	(untung.wijaya@trimegah.com)
Donny Kristanto Setiadi	Palembang, Sumatra Selatan	(donny.kristanto@trimegah.com)
Rr. Putri Ayu Erikusuma	Malang, Jawa Timur	(putri.ayu@trimegah.com)

PT Trimegah Securities Tbk
18th Fl, Artha Graha Building
Jl. Jend. Sudirman Kav. 52-53
Jakarta 12190, INDONESIA
Tel : (6221) 2924 9088 Fax : (6221) 2924 9163

DISCLAIMER

This report has been prepared by PT Trimegah Securities Tbk on behalf of itself and its affiliated companies and is provided for information purposes only. Under no circumstances is it to be used or considered as an offer to sell, or a solicitation of any offer to buy. This report has been produced independently and the forecasts, opinions and expectations contained herein are entirely those of Trimegah Securities.

While all reasonable care has been taken to ensure that information contained herein is not untrue or misleading at the time of publication, Trimegah Securities makes no representation as to its accuracy or completeness and it should not be relied upon as such. This report is provided solely for the information of clients of Trimegah Securities who are expected to make their own investment decisions without reliance on this report. Neither Trimegah Securities nor any officer or employee of Trimegah Securities accept any liability whatsoever for any direct or consequential loss arising from any use of this report or its contents. Trimegah Securities and/or persons connected with it may have acted upon or used the information herein contained, or the research or analysis on which it is based, before publication. Trimegah Securities may in future participate in an offering of the company's equity securities.