

IHSG

3.531,8

80,7

2,34%

Ulisan Pasar



Perdagangan pada Indeks Harga Saham Gabungan kemarin diakhiri dengan membukukan penguatan sebesar 2,34% serta ditutup pada level 3.532, didorong oleh sentimen positif regional menyusul kebijakan regulator pemerintah Jerman dan Perancis dalam mencari solusi penyelesaian krisis utang di Eropa.

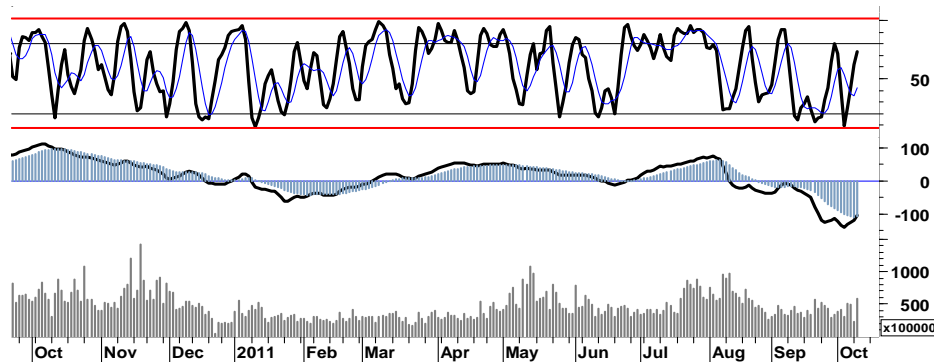
Aksi beli selektif pada sejumlah saham unggulan seperti BBRI, BMRI, BBNI, ASII, BBKA, dan GGRM merupakan kontributor terhadap penguatan 25 poin pada IHSG. Pada saat yang bersamaan, para pelaku asing mencatatkan nilai penjualan bersih sebesar Rp5,1 miliar.

Pergerakan indeks pada bursa-bursa utama Eropa yang mengakhiri perdagangan kemarin dengan ditutup bervariasi, dimana DAX membukukan penguatan tipis sebesar 0,3%, sementara CAC justru ditutup melemah tipis 0,25%. Pergerakan indeks pada beberapa bursa utama di Amerikapun bergerak serupa melemahnya DJI 0,2%, tidak serta merta menekan Nasdaq dan S&P500 yang justru

mencatatkan nilai positif 0,7% dan 0,1%.

Sloping negatif serta indikasi dead cross MA 50 dan MA200, akan memberi warna tersendiri bagi pergerakan IHSG hingga sisa hari perdagangan pekan ini. Untuk dapat keluar dari bearish area jangka pendek, dibutuhkan konfirmasi dengan signal positif yang mampu mendorong IHSG melakukan penetrasi resistensi harga 3.550/3.565.

Dengan adanya sisa ruang positif pada stochastic oscillator, IHSG memiliki peluang untuk bergerak dalam rentang harga 3.505 - 3.610. Yang menjadi perhatian adalah potensi pelemahan sejumlah saham unggulan yang telah memasuki area overbought, yang dapat sewaktu-waktu menyeret IHSG untuk kembali menguji support 3.480 - 3.450.



S1	S2	R1	R2
3,470	3,405	3,580	3,630

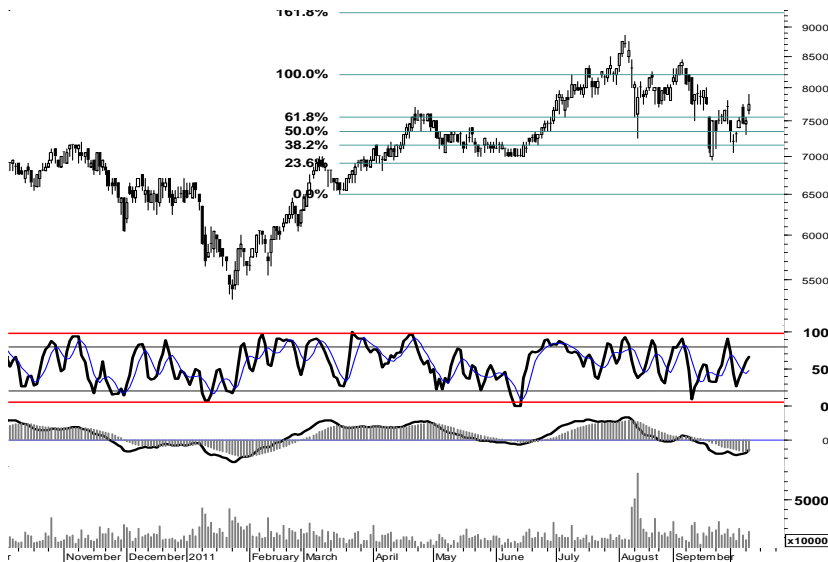
Saham Pilihan

Saham	Harga (Rp)	Rekomendasi	Stochastic	RSI	BB Top	BB Bottom	S1	S2	R1	R2
ASII	65,900	StrongSell	88.61	54.66	69,650	57,650	65,450	65,000	67,500	67,950
BBKA	7,750	OverBought	66.67	51.56	7,850	7,300	7,600	7,450	8,050	8,200
BBRI	6,250	OverBought	75.38	53.42	6,600	5,450	6,200	6,100	6,400	6,500
PTBA	15,100	Trading	29.10	40.33	15,300	13,500	14,550	14,000	15,800	16,350
SGRO	2,725	Trading	54.05	38.42	2,800	2,525	2,675	2,625	2,825	2,875
TLKM	7,300	Trading	18.92	47.75	7,750	6,950	7,250	7,200	7,400	7,450



Ruang uptrend yang semakin tipis, lonjakan harga yang terjadi kemarin dan menyisakan celah harga 65.100 - 65.750 merupakan katalis harga yang harus diwaspadai yang mengindikasikan adanya potensi pelemahan bagi ASII untuk menguji support 65.000

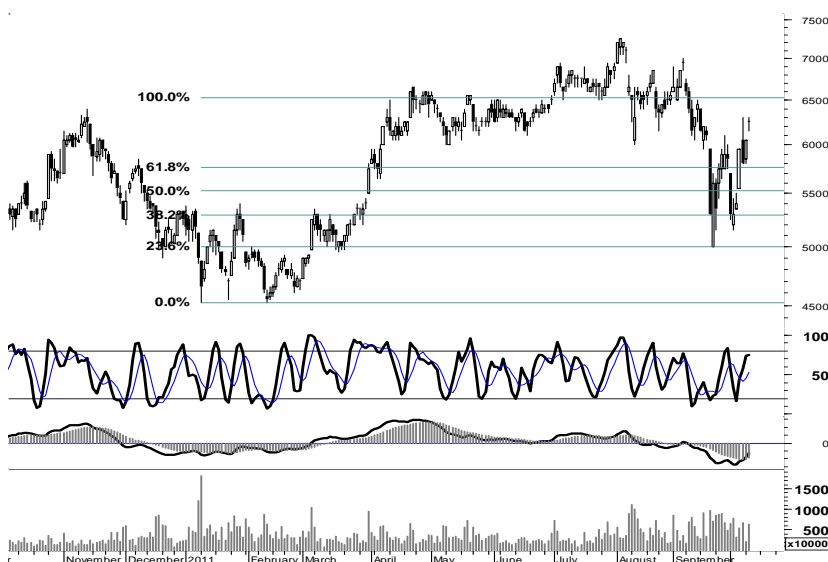
S1	S2	R1	R2
65,450	65,000	67,500	67,950



Sebagaimana halnya beberapa saham unggulan yang mengalami lonjakan harga serta menyisakan celah support, BBCA pun memiliki peluang untuk mengalami koreksi.

Setidaknya signal positif dari leading indicator dan masih cukup ruang bagi BBCA untuk melanjutkan rally penguatan menguji resistensi 8.050, yang membuka peluang bagi BBCA untuk bergerak dalam rentang trading 7.500 - 8.050.

S1	S2	R1	R2
7,600	7,450	8,050	8,200



Doji pada puncak resisten harga 6.200 - 6.250, merupakan indikasi adanya ancaman bagi pergerakan penguatan BBRI.

Apabila gagal melakukan penetrasi 6.200 dan bergerak di atas 6.400, maka BBRI memiliki peluang untuk melemah dan menguji support 6.050/6.100.

S1	S2	R1	R2
6,200	6,100	6,400	6,500

PTBA

15,100

Trading



Indikasi signal positif pada beberapa leading indicator penunjang, serta akumulasi beli yang dilakukan pada perdagangan kemarin, PTBA masih memiliki banyak ruang untuk bergerak melanjutkan rally penguatannya menuju siklus target 16.950-17.000.

Untuk menuju siklus tersebut, PTBA diharapkan mampu untuk melakukan penetrasi resistensi terdekat di level 15.800.

Peluang pergerakan hari ini ada dalam rentang harga 15.000 - 15.800.

S1	S2	R1	R2
14,550	14,000	15,800	16,350

SGRO

2,725

Trading



Sebagaimana PTBA, indikasi signal positif dan sisa ruang kenaikan diharapkan mampu dimanfaatkan bagi SGRO untuk melakukan pergerakan dalam rentang harga 2.700 - 2.825.

S1	S2	R1	R2
2,675	2,625	2,825	2,875

TLKM

7,300

Trading



Pada area oversold dari fast moving oscillator, dengan basis support harga psikologis pada retracement 22% atau setara 7.100, kami melihat TLKM merupakan salah satu saham unggulan yang akan menahan laju tekanan pada IHSG dan memanfaatkan momentum pada rentang harga 7.200 - 7.450.

S1	S2	R1	R2
7,250	7,200	7,400	7,450

TRADE DATA

JCI (IHSG) 3,531.8 80.7 2.34%

YTD (Rp)	-4.6%	Volume (m) :	5,724
YTD (USD)	-4.2%	Nilai (Rpbn) :	3,328
Moving Avg 20day	3,528	Mkt Cap (Rpbn) :	3,439
Moving Avg 50day	3,789	Market P/E (x) :	16.2
Moving Avg 200day	3,717	Market Div. Yield (%) :	2.4

Indonesia & Sectors +/- (%) YTD (%)

MSCI Indonesia	4,400.3	127.8	2.99	-3.22
JII	487.0	13.4	2.82	-8.61
LQ45	622.9	16.9	2.79	-5.82
JAKFIN Index	472.4	12.6	0.03	1.24
JAKINFR Index	671.5	11.2	0.02	-18.03
JAKMINE Index	2,452.7	85.6	0.04	-25.09
JAKCONS Index	1,209.1	10.2	0.01	10.45
JAKTRAD Index	492.4	8.3	0.02	3.85
JAKMIND Index	1,174.0	30.4	0.03	21.40
JAKBIND Index	356.2	11.8	0.03	-8.02
JAKPROP Index	202.5	4.6	0.02	-0.29
JAKAGRI Index	1,878.7	17.6	0.01	-17.75

Regional Indices +/- (%) YTD (%)

MXWO	MSCI Word	1,159.3	2.7	0.24	-9.44
SPX	S&P 500	1,195.5	0.6	0.05	-4.94
US					
Dow Jones Industrial		11,416.3	-16.9	-0.15	-1.39
Nasdaq	US	2,583.0	17.0	0.66	-2.63
Europe					
EURO 50	Europe	235.3	-0.7	-0.28	-14.69
FTSE	London	5,395.7	-3.3	-0.06	-8.55
DAX	German	5,865.0	17.7	0.30	-15.17
CAC	France	3,153.5	-7.9	-0.25	-17.12
SMI	Swiss	5,732.2	13.6	0.24	-10.94
BRIC					
BOVESPA	Brazil	53,838.5	565.4	1.06	-22.32
MICEX	Russia	1,364.1	-16.8	-1.22	-19.19
SENSEX	India	16,536.5	-20.8	-0.13	-19.37
NIFTY	India	4,974.4	-5.3	-0.11	-18.91
SHCOMP	China	2,348.5	3.7	0.16	-16.37
SZCOMP	China	992.3	-5.5	-0.55	-23.13

Commodities +/- (%) YTD (%)

CRB Index	310.51	1.8	0.60	-6.70
Oil & Gas				
Crude Oil	85.81	0.4	0.47	-6.10
Natural Gas	3.62	0.1	2.12	-17.91
COAL (Rotterdam)	119.05	-0.4	-0.29	-9.40
COAL (Amsterdam)	118.73	-0.6	-0.48	-5.73
COAL (Australia,wk)	120.55	0.0	0.00	-1.51
Industrial Metals				
Alumunium	2,209.50	-28.3	-1.26	-10.16
Nickel	18,875	-505	-2.61	-23.74
Tin	22,400	-650	-2.82	-16.73
Precious Metal				
Gold	1,661.00	-9.8	-0.59	16.86
Silver	32.00	0.0	0.06	3.52
Soft Commodities				
CPO (Malaysia)	2,800.00	2.0	0.07	-26.59
CPO (Netherlands)	975.00	-25.0	-2.50	-24.12
Rubber	4,086.11	44.6	1.10	-18.18
Corn	645.00	40.0	6.61	2.54
Wheat	660.75	49.3	8.05	-16.81
Soybeans	1,235.50	58.0	4.93	-11.35
Rice (Indonesia)	7,700.00	0.0	0.00	8.45

Developed ASIA

Nikkei	Japan	8,773.7	168.1	1.95	-14.23
TPX	Japan	755.0	13.5	1.81	-16.00
HIS	Hong kong	18,141.6	430.5	2.43	-21.24
KOSPI	S.Korea	1,795.0	28.6	1.62	-12.48
TAIEX	Taiwan	7,398.7	186.8	2.59	-17.54
FSSTI	Singapore	2,693.1	24.8	0.93	-15.58

ASEAN

SET	Thailand	944.8	21.6	2.34	-8.52
PCOMP	Philippines	4,109.3	68.7	1.70	-2.19
KLCI	Malaysia	1,411.7	14.6	1.05	-7.06
VNINDEX	Vietnam	417.7	-1.9	-0.46	-13.81

Currency +/- (%) YTD (%)

EURUSD	Euro	1.364	-0.000	-0.01	1.91
GBPUSD	United Kingdom	1.558	-0.009	-0.58	-0.22
USDCHF	Switzerland	0.909	0.005	0.55	-2.83
USDCAD	Canada	1.030	0.004	0.41	3.21
AUDUSD	Australia	0.995	-0.004	-0.36	-2.75
NZDUSD	New Zealand	0.780	-0.004	-0.52	-0.05
USDJPY	Japan	76.7	-0.030	-0.04	-5.51
USDCNY	China	6.376	0.028	0.43	-3.50
USDHKD	Hongkong	7.781	0.000	0.00	0.10
USDSGD	Singapore	1.284	0.009	0.69	0.04
Rupiah	Indonesia	8,965.0	15.000	0.17	-0.34

Winners

Stock	Price	(%)	Stock	Price	(%)
PTBA	15,100	9.03	KBLI	85	-15.00
ADRO	1,780	6.59	DLTA	110,000	-7.56
CPIN	2,525	6.32	ILKP	680	-5.56
INTP	13,600	5.43	TBIG	1,960	-2.00
PGAS	2,625	3.96	SMAR	5,800	-1.69
UNTR	21,500	3.61	BTEL	290	-1.69
BBCA	7,750	3.33	BRMS	590	-1.67
BBRI	6,250	3.31	GJTL	2,375	-1.04
BMRI	6,450	3.20	INVS	5,600	-0.88
ASII	65,900	2.73	UNVR	15,550	-0.32

Losers

Value

Value (Rpbn)	Volume (Lot)	Freq	(x)
BBRI 390,976	KIJA 1,914,560	KIJA	9,627
BMRI 357,755	ELTY 1,217,140	LPCK	6,084
ASII 356,980	BNBR 935,172	TMPI	5,697
BUMI 352,749	ENRG 791,948	BBRI	4,623
ADRO 173,551	DEWA 369,385	APIC	4,401
KIJA 172,498	BUMI 354,084	BUMI	4,308
PGAS 151,103	ASRI 255,921	BMRI	3,784
BBNI 145,809	BKSL 224,151	STAR	3,776
LPCK 132,298	BHIT 219,772	ADRO	3,506
BBCA 129,330	APIC 214,360	ELTY	3,265

Code	Last	Ytd Chg(%)	H-5 Chg (%)	Rekomendasi	STO	RSI	MACD	Bollinger Band		Support			Resistance			H-5	
								Top	Bottom	1	2	3	1	2	3	Highest	Lowest
AALI	17,000	-36.57	0.00	Accumulate	19.3	28.0	(1,264.7)	17,700	16,400	16,850	16,650	16,400	17,300	17,550	17,750	18,400	16,550
ACES	3,400	19.30	9.68	StrongSell	80.7	55.1	15.3	3,650	3,150	3,400	3,375	3,375	3,425	3,425	3,450	3,525	3,050
ADRO	1,780	-33.46	16.34	OverBought	77.5	46.1	(114.9)	1,870	1,550	1,740	1,700	1,670	1,810	1,840	1,880	1,790	1,500
AISA	680	-12.82	13.33	OverBought	69.4	48.2	(20.8)	730	605	660	635	620	700	715	740	700	580
ANTM	1,510	-38.99	6.34	OverBought	68.8	37.7	(98.4)	1,560	1,440	1,500	1,490	1,460	1,540	1,570	1,580	1,550	1,380
ASII	65,900	21.14	12.27	StrongSell	88.6	54.7	(1,027.0)	69,650	57,650	65,450	65,000	64,200	66,700	67,500	67,950	67,000	57,300
BBCA	7,750	20.16	7.64	OverBought	66.7	51.6	(122.8)	7,850	7,300	7,600	7,450	7,300	7,900	8,050	8,200	7,900	7,050
BBNI	3,500	-7.89	10.24	OverBought	68.5	43.9	(169.0)	3,675	3,200	3,475	3,425	3,375	3,575	3,625	3,675	3,575	3,125
BBRI	6,250	20.77	17.92	OverBought	75.4	53.4	(144.0)	6,600	5,450	6,200	6,100	6,050	6,350	6,400	6,500	6,300	5,150
BDMN	4,500	-18.18	13.21	OverBought	71.6	45.5	(203.4)	4,675	4,050	4,425	4,325	4,225	4,625	4,725	4,825	4,625	3,975
BISI	900	-51.87	2.27	Accumulate	23.3	32.0	(83.8)	950	850	885	870	845	925	950	965	970	870
BMRI	6,450	0.00	16.22	StrongSell	82.7	51.9	(187.1)	6,750	5,700	6,400	6,350	6,250	6,550	6,650	6,700	6,550	5,500
BSDE	840	-4.55	7.69	Trading	55.2	45.9	(38.0)	865	780	825	810	795	855	870	885	860	760
BTEL	290	23.40	-1.69	OverBought	70.0	25.3	(14.2)	310	285	284	277	269	299	307	314	315	250
BUMI	1,980	-36.64	22.98	OverBought	71.5	40.0	(199.0)	2,120	1,760	1,960	1,930	1,890	2,020	2,060	2,090	2,075	1,600
BWPT	980	-25.19	-1.01	Accumulate	28.0	27.9	(54.7)	990	965	965	950	925	1,005	1,030	1,045	1,030	950
ELTY	107	-33.54	8.08	OverBought	60.0	35.5	(10.4)	110	98	102	97	91	113	119	124	114	93
EXCL	4,950	-5.71	9.39	StrongSell	80.0	49.6	(106.3)	5,125	4,525	4,825	4,700	4,525	5,125	5,300	5,425	5,150	4,425
GGRM	56,000	36.42	9.59	OverBought	75.3	59.5	178.4	57,900	52,650	55,650	55,300	54,550	56,750	57,500	57,850	57,100	51,100
HEXA	7,250	0.00	3.57	Trading	44.4	44.9	(177.8)	7,650	6,950	7,100	6,950	6,700	7,500	7,750	7,900	7,850	6,800
HRUM	7,300	-22.75	20.66	OverBought	79.3	47.7	(373.2)	7,700	6,300	7,150	7,000	6,850	7,450	7,600	7,750	7,400	5,900
INCO	3,050	-38.69	17.31	StrongSell	88.1	43.3	(216.3)	3,250	2,650	3,000	2,925	2,875	3,125	3,175	3,250	3,100	2,525
INDF	5,150	4.04	11.35	OverBought	72.5	48.8	(227.9)	5,350	4,700	5,100	5,000	4,950	5,250	5,300	5,400	5,200	4,575
INDY	2,375	-53.43	7.95	Trading	55.6	35.7	(207.4)	2,450	2,300	2,350	2,325	2,275	2,425	2,475	2,500	2,475	2,175
INTP	13,600	-15.26	13.33	OverBought	73.9	50.7	(381.4)	14,300	11,900	13,350	13,100	12,950	13,750	13,900	14,150	13,650	11,700
ISAT	4,825	-11.47	1.05	Spec. Buy	38.0	37.3	(201.3)	4,875	4,700	4,775	4,725	4,625	4,925	5,025	5,075	5,000	4,625
ITMG	39,600	-27.07	14.45	OverBought	77.6	45.9	(1,789.8)	40,900	35,700	39,050	38,500	38,150	39,950	40,300	40,850	39,700	34,300
JSMR	3,825	7.75	4.79	OverBought	64.1	48.7	(46.6)	3,900	3,700	3,800	3,750	3,725	3,875	3,900	3,950	3,900	3,550
KLBF	3,400	2.26	9.68	OverBought	79.2	54.0	(21.0)	3,500	3,225	3,375	3,350	3,300	3,450	3,500	3,525	3,475	2,975
LSIP	1,950	-23.23	12.07	OverBought	65.8	45.3	(101.9)	2,020	1,760	1,930	1,900	1,870	1,990	2,020	2,050	1,990	1,730
MAPI	4,400	58.56	10.00	StrongSell	80.4	50.4	(68.4)	4,525	4,100	4,275	4,150	4,050	4,500	4,600	4,725	4,475	3,900
PGAS	2,625	-41.34	3.96	OverBought	62.5	43.9	(120.1)	2,675	2,500	2,575	2,525	2,450	2,700	2,775	2,825	2,700	2,400
PTBA	15,100	-36.95	4.86	Trading	29.1	40.3	(1,129.0)	15,300	13,500	14,550	14,000	13,650	15,450	15,800	16,350	15,700	13,600
RALS	710	-96.60	10.94	Trading Sell	51.6	47.1	(27.1)	720	650	20,870	20,870	20,870	20,870	20,870	20,870	730	620
SGRO	2,725	-16.15	4.81	Trading	54.1	38.4	(194.5)	2,800	2,525	2,675	2,625	2,575	2,775	2,825	2,875	2,775	2,500
SMCB	1,730	-22.25	1.76	StrongBuy	11.1	40.5	(62.1)	1,800	1,650	1,720	1,710	1,690	1,750	1,770	1,780	1,810	1,690
SMGR	7,950	-19.29	0.63	StrongBuy	16.7	42.1	(254.8)	8,150	7,650	7,900	7,800	7,700	8,100	8,200	8,300	8,400	7,700
SMRA	1,040	-3.70	18.18	StrongSell	87.5	44.9	(64.6)	1,100	910	1,030	1,020	1,010	1,050	1,060	1,070	1,050	870
TINS	1,660	-41.75	1.84	Trading	58.0	32.9	(140.7)	1,710	1,580	1,630	1,600	1,560	1,700	1,740	1,770	1,710	1,550
TLKM	7,300	-8.75	-2.01	Trading	18.9	47.8	(6.5)	7,750	6,950	7,250	7,200	7,150	7,350	7,400	7,450	7,750	7,100
UNTR	21,500	-11.52	11.11	StrongSell	81.0	46.3	(832.8)	22,250	19,550	21,150	20,800	20,450	21,850	22,200	22,550	21,800	18,950
UNVR	15,550	-3.12	-1.27	OverSold	21.0	44.6	(151.3)	16,100	15,350	15,450	15,350	15,150	15,750	15,950	16,050	16,500	15,500

S1 = Support 1 S2 = Support 2 S3 = Support 3
 R1 = Resisten 1 R2 = Resisten 2 R2 = Resisten 2
 STO = Stochastic Oscillator
 RSI = Relative Strength Index
 MACD = Moving Average Convergence Divergence
 H-5 = 5 hari sebelumnya

RESEARCH TEAM

Andrian Tanuwijaya	Equity Analyst	(andrian.tanuwijaya@trimegah.com)
Hanel Topada Era Tania	Equity Analyst	(hanel.tania@trimegah.com)
Paul Raymond Widjaja	Equity Analyst	(paul.widjaja@trimegah.com)
Michele Gabriela	Equity Analyst	(michele.gabriela@trimegah.com)
T Hedy Arifien	Technical Analyst	(hedy@trimegah.com)
Rovandi	Research Assistant	(rovandi@trimegah.com)

EQUITY CAPITAL MARKET TEAM

Nathanael Benny Prasetyo	Head of Retail ECM	(benny.prasetyo@trimegah.com)
Windra Djulnaily	Pluit, Jakarta	(windra.djulnaily@trimegah.com)
Ariawan Anwar	Artha Graha, Jakarta	(ariawan.anwar@trimegah.com)
Ferry Zabur	Kelapa Gading, Jakarta	(ferry.zabur@trimegah.com)
Wirjawan Joesoef	Mangga Dua, Jakarta	(iwan@trimegah.com)
Lukman Abdul Azis	Kebon Jeruk, Jakarta	(lukman@trimegah.com)
Untung Wijaya	Semarang, Jawa Tengah	(untung.wijaya@trimegah.com)
Sonny Muljadi	Surabaya, Jawa Timur	(sonny.muljadi@trimegah.com)
Ni luh Ketut Sri Agustini	Denpasar, Bali	(sri.agustini@trimegah.com)
Philip Fernando Suwandi	Makassar, Sulawesi Selatan	(philip.fs@trimegah.com)
agus.jatmiko	Balikpapan, Kalimantan Timur	(agus.jatmiko@trimegah.com)
Asep Saepudin	Bandung, Jawa Barat	(asep.saepudin@trimegah.com)
Ariffianto	Cirebon, Jawa Barat	(ariffianto@trimegah.com)
Very Wijaya	Medan, Sumatera Utara	(very.wijaya@trimegah.com)
Tantie Rivi Watie	Pekanbaru, Riau	(tantierw@trimegah.com)
Agus Bambang Suseno	Solo, Jawa Tengah	(agus.suseno@trimegah.com)
Untung Wijaya	Yogyakarta, Jawa Tengah	(untung.wijaya@trimegah.com)
Donny Kristanto Setiadi	Palembang, Sumatra Selatan	(donny.kristanto@trimegah.com)
Rr. Putri Ayu Erikusuma	Malang, Jawa Timur	(putri.ayu@trimegah.com)

PT Trimegah Securities Tbk
18th Fl, Artha Graha Building
Jl. Jend. Sudirman Kav. 52-53
Jakarta 12190, INDONESIA
Tel : (6221) 2924 9088 Fax : (6221) 2924 9163

DISCLAIMER

This report has been prepared by PT Trimegah Securities Tbk on behalf of itself and its affiliated companies and is provided for information purposes only. Under no circumstances is it to be used or considered as an offer to sell, or a solicitation of any offer to buy. This report has been produced independently and the forecasts, opinions and expectations contained herein are entirely those of Trimegah Securities.

While all reasonable care has been taken to ensure that information contained herein is not untrue or misleading at the time of publication, Trimegah Securities makes no representation as to its accuracy or completeness and it should not be relied upon as such. This report is provided solely for the information of clients of Trimegah Securities who are expected to make their own investment decisions without reliance on this report. Neither Trimegah Securities nor any officer or employee of Trimegah Securities accept any liability whatsoever for any direct or consequential loss arising from any use of this report or its contents. Trimegah Securities and/or persons connected with it may have acted upon or used the information herein contained, or the research or analysis on which it is based, before publication. Trimegah Securities may in future participate in an offering of the company's equity securities.