

IHSG

3.685,0 -105,8 -2,79%

Ulisan Pasar



Faktor eksternal kembali menekan pergerakan IHSG pada perdagangan kemarin, pada akhir sesi ditutup melemah -2,8% dan ditutup pada level 3.685 (area *fibo ratio* 50%). Serta merta mengakibatkan IHSG kembali bergerak dibawah MA200.

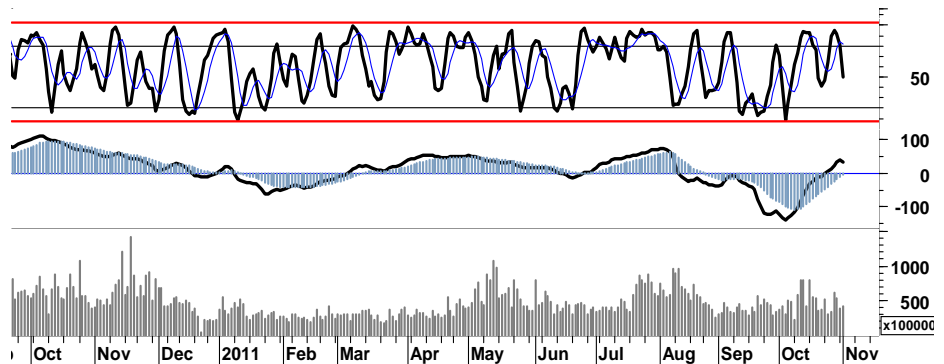
Pada saat yang bersamaan, para pelaku asing mencatatkan nilai penjualan bersih sebesar Rp59,1miliar.

Pergerakan indeks acuan di Eropa pun kembali tergerus cukup dalam, DAX maupun CAC masing-masing terpuruk -5.0% dan -5.4%. Diikuti pula oleh DJI, S&P500 serta Nasdaq yang turut mengalami pelemahan masing-masing sebesar -2,5%, -2,8% serta -2,9%.

Agar dapat bertahan dalam *uptrend channel* jangka pendeknya, maka basis support 3.580 pada basis area konsolidasi *fibo ratio* 38% diharapkan mampu mengembalikan serta menjadi titik pembalikan arah IHSG. Dengan demikian tekanan pelemahan yang diperkirakan

akan berlanjut pada perdagangan hari ini, merupakan peluang bagi para pelaku pasar untuk melakukan akumulasi pembelian.

Belum munculnya signal positif pada beberapa indikator, memaksa kami untuk mewaspadaai potensi menguji basis support 3.580 yang berarti masih tersisa downside sebesar 2,5%. Dengan demikian trading hanya dapat dilakukan apabila IHSG bergerak di bawah support 3.650, sementara akumulasi pembelian jangka menengah dapat dilakukan apabila posisi IHSG berada pada level 3.610.



S1	S2	R1	R2
3,650	3,610	3,755	3,830

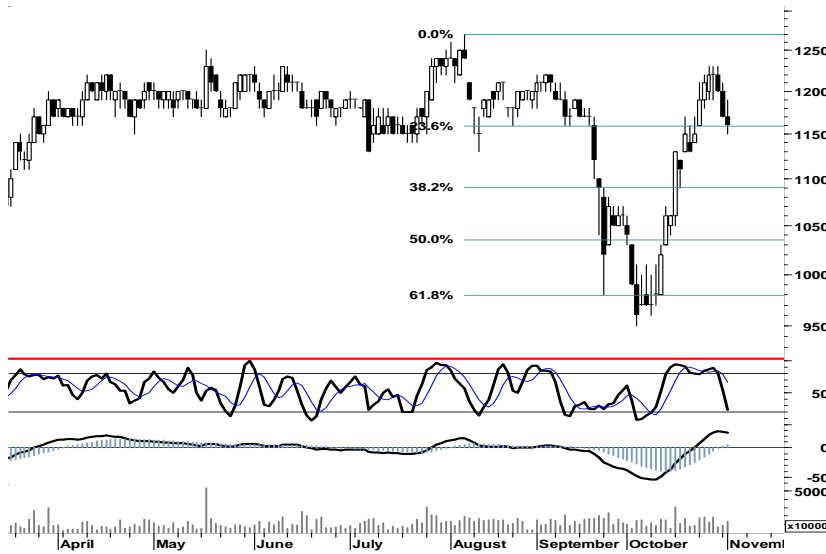
## Saham Pilihan

Saham	Harga (Rp)	Rekomendasi	Stochastic	RSI	BB Top	BB Bottom	S1	S2	R1	R2
BWPT	1,160	OverSold	23.81	55.10	1,240	1,140	1,150	1,130	1,210	1,230
HRUM	7,850	OverSold	35.19	54.16	8,300	7,650	7,700	7,550	8,250	8,400
INDF	5,000	StrongBuy	14.67	37.85	5,750	4,800	4,925	4,850	5,300	5,375
JSMR	3,750	StrongBuy	14.29	43.49	3,950	3,725	3,700	3,650	3,950	4,000
MAPI	4,875	Trading	59.32	57.17	5,075	4,825	4,775	4,650	5,100	5,225
UNVR	15,650	OverSold	20.00	44.60	16,150	15,350	15,450	15,250	16,050	16,250

**BWPT**

1,160

OverSold



Terbatasnya ruang pelemahan pada *Stochastic(5D)* 23,8 adalah merupakan peluang akumulasi bagi BWPT, untuk dapat bertahan pada *uptrend channel*nya.

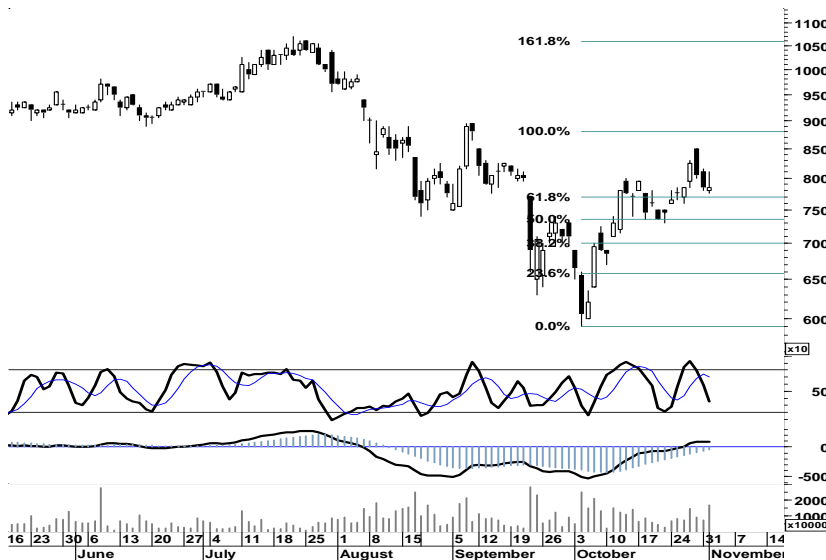
Akumulasi dapat dilakukan pada support-support 1.130/1.090 dengan mewaspadai stop-loss celah support 1.120 yang juga berpotensi menyeret BWPT menguji support pada *fibonacci ratio* 50% di level 1.040.

S1	S2	R1	R2
1,150	1,130	1,210	1,230

**HRUM**

7,850

OverSold



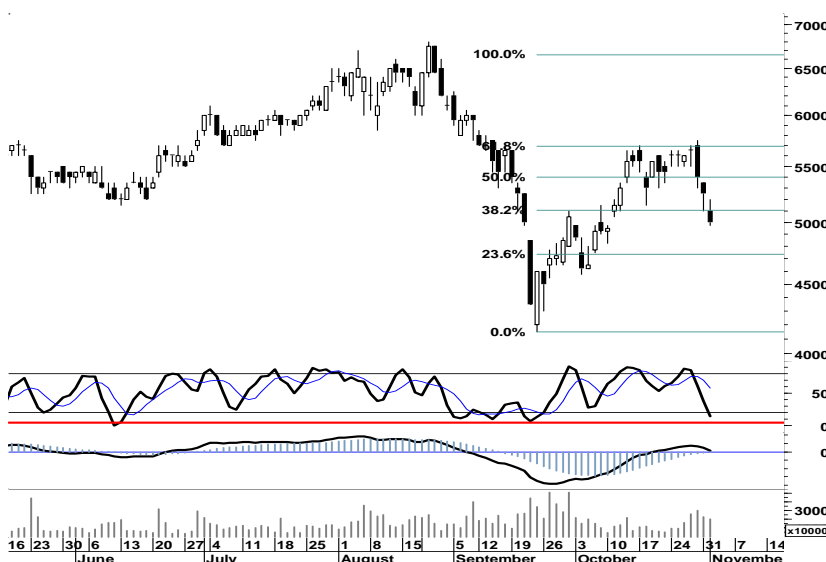
Sedikit dibawah pivot support 7.900, menempatkan HRUM pada kondisi berimbang. Dimana peluang pembalikan arah untuk menguji pencapaian target siklus pada resistensi harga 8.800 akan ditentukan oleh support pada *fibonacci ratio* 62% di level 7.700.

S1	S2	R1	R2
7,700	7,550	8,250	8,400

**INDF**

5,000

StrongBuy



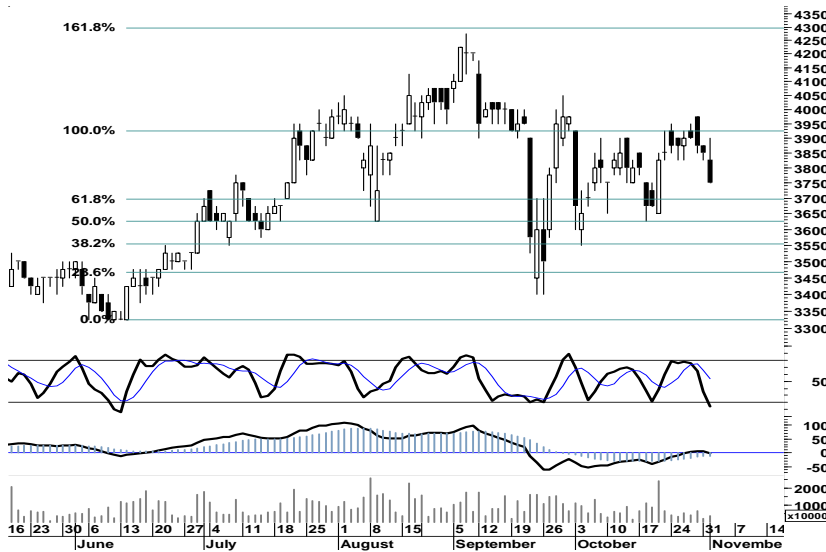
Dengan terbatasnya ruang pelemahan pada INDF, kami melihat terbukanya peluang pembalikan arah pada support celah harga 4.925. Dengan demikian INDF akan mencoba keluar dari area konsolidasi untuk melanjutkan siklus serta melakukan penetrasi resistensi kuat pada harga 5.700.

S1	S2	R1	R2
4,925	4,850	5,300	5,375

## JSMR

3,750

StrongBuy



Dalam pertimbangan kondisi harga, support pada fibo ratio 62% di level 3.700 membuka peluang bagi JSMR untuk melakukan pembalikan arah.

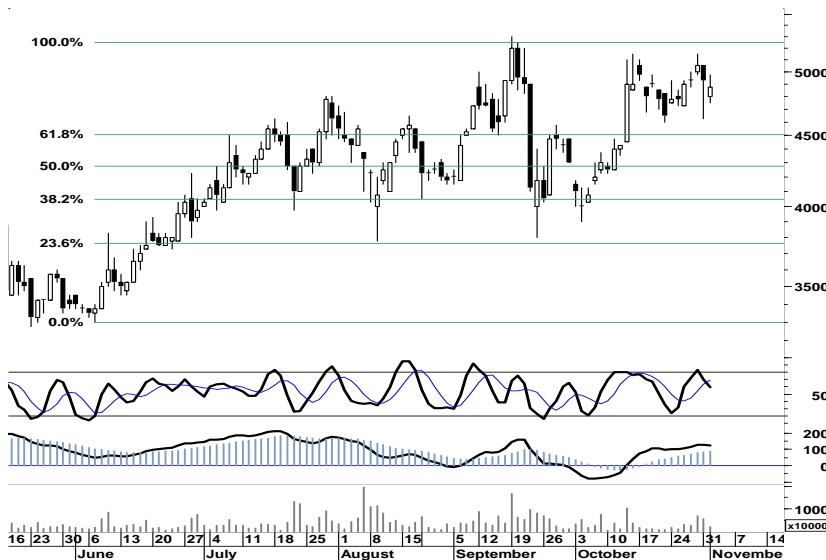
Didukung oleh signal pelemahan ruang tekanan, akumulasi JSMR dapat dilakukan pada support-support 3.650 - 3.550.

S1	S2	R1	R2
3,700	3,650	3,950	4,000

## MAPI

4,875

Trading



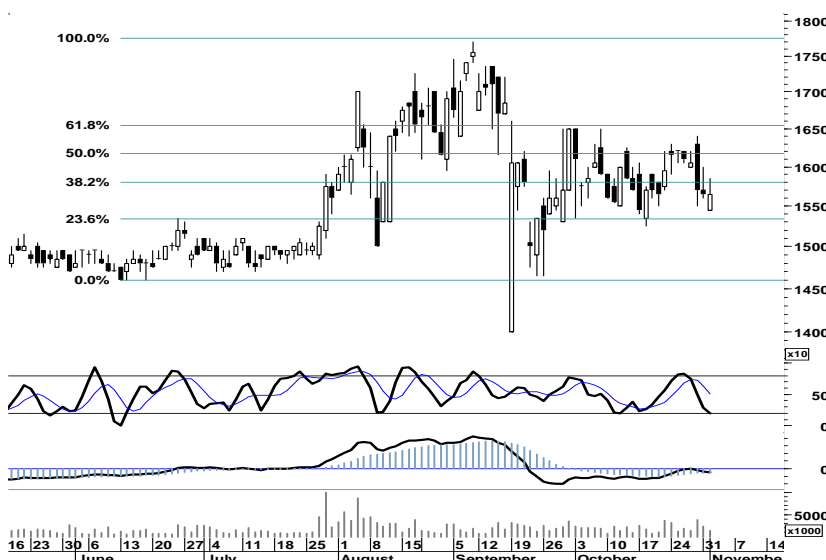
Secara umum MAPI masih berada pada kondisi *Strong Bullish*, dimana perlawanan beli yang terjadi di akhir sesi perdagangan kemarin, diharapkan mampu memberikan ruang bagi MAPI untuk menguji resistensi pada siklus harga 5.250.

S1	S2	R1	R2
4,775	4,650	5,100	5,225

## UNVR

15,650

OverSold



Terjadinya perlawanan aksi beli pada area oversold Stochastic(5D) 20, diharapkan mampu memberikan angin segar pada UNVR untuk melanjutkan percobaan menguji penetrasi resistensi 16.050.

S1	S2	R1	R2
15,450	15,250	16,050	16,250

## TRADE DATA

### JCI (IHSG) 3,685.0 -105.8 -2.79%

YTD (Rp)	-0.5%	Volume (m) :	5,340
YTD (USD)	-0.2%	Nilai (Rpbn) :	3,328
Moving Avg 20day	3,634	Mkt Cap (Rptr) :	3,439
Moving Avg 50day	3,694	Market P/E (x) :	16.2
Moving Avg 200day	3,720	Market Div. Yield (%) :	2.4

### Indonesia & Sectors +/- (%) YTD (%)

MSCI Indonesia	4,619.8	-154.1	-3.23	1.61
JII	513.6	-16.6	-3.13	-3.63
LQ45	653.8	-21.8	-3.22	-1.14
JAKFIN Index	495.9	-14.0	-0.03	6.26
JAKINFR Index	693.7	-10.0	-0.01	-15.32
JAKMINE Index	2,621.2	-103.9	-0.04	-19.94
JAKCONS Index	1,213.2	-28.3	-0.02	10.83
JAKTRAD Index	518.8	-10.4	-0.02	9.43
JAKMIND Index	1,192.0	-44.1	-0.04	23.27
JAKBIND Index	378.3	-18.0	-0.05	-2.31
JAKPROP Index	210.0	-5.1	-0.02	3.39
JAKAGRI Index	2,102.1	-53.0	-0.02	-7.98

### Commodities +/- (%) YTD (%)

CRB Index	315.23	-4.6	-1.44	-5.28
<b>Oil &amp; Gas</b>				
Crude Oil	92.19	-1.0	-1.07	0.89
Natural Gas	3.78	-0.2	-3.89	-14.17
COAL (Rotterdam)	116.20	-1.8	-1.53	-11.57
COAL (Amsterdam)	115.40	-2.2	-1.89	-8.38
COAL (Australia,wk)	116.45	0.0	0.00	-4.86
<b>Industrial Metals</b>				
Alumunium	2,106.00	-96.3	-4.37	-14.36
Nickel	18,600	-975	-4.98	-24.85
Tin	21,775	-225	-1.02	-19.05
<b>Precious Metal</b>				
Gold	1,711.80	-13.4	-0.78	20.43
Silver	32.73	-1.6	-4.72	5.89
<b>Soft Commodities</b>				
CPO (Malaysia)	2,925.00	-17.0	-0.58	-23.31
CPO (Netherland)	1,015.00	-7.5	-0.73	-21.01
Rubber	3,719.54	-133.6	-3.47	-25.52
Corn	654.25	7.3	1.12	4.01
Wheat	630.00	1.8	0.28	-20.68
Soybeans	1,202.50	-5.0	-0.41	-13.72
Rice (Indonesia)	7,700.00	0.0	0.00	8.45

### Winners

Stock	Price	(%)	Stock	Price	(%)
GTBO	265	34.52	BUMI	2,150	-8.51
IDKM	1,740	13.73	INTP	15,250	-6.73
SSTM	200	11.11	CPIN	2,500	-6.54
HEXA	8,250	5.10	SMGR	9,000	-5.26
MDRN	3,150	5.00	BMRI	6,800	-4.90
IKP	790	3.95	UNTR	23,700	-3.66
ELSA	215	2.38	ASII	66,500	-3.62
MEDC	2,375	2.15	BBRI	6,550	-2.96
BMTR	810	1.25	GGRM	56,900	-2.90
ACES	3,400	0.74	BBCA	7,900	-2.47

### Losers

Stock	Price	(%)	Stock	Price	(%)
BUMI	2,150	-8.51	INTP	15,250	-6.73
INTP	15,250	-6.73	CPIN	2,500	-6.54
CPIN	2,500	-6.54	SMGR	9,000	-5.26
SMGR	9,000	-5.26	BMRI	6,800	-4.90
BMRI	6,800	-4.90	UNTR	23,700	-3.66
UNTR	23,700	-3.66	ASII	66,500	-3.62
ASII	66,500	-3.62	BBRI	6,550	-2.96
BBRI	6,550	-2.96	GGRM	56,900	-2.90
GGRM	56,900	-2.90	BBCA	7,900	-2.47
BBCA	7,900	-2.47			

### Regional Indices

			+/-	(%)	YTD (%)
MXWO	MSCI Word	1,174.8	-42.5	-3.49	-8.23
SPX	S&P 500	1,218.3	-35.0	-2.79	-3.13
<b>US</b>					
Dow Jones Industrial		11,658.0	-297.1	-2.48	0.69
Nasdaq	US	2,607.0	-77.4	-2.89	-1.73
<b>Europe</b>					
EURO 50	Europe	235.1	-8.4	-3.46	-14.77
FTSE	London	5,421.6	-122.7	-2.21	-8.11
DAX	Jerman	5,834.5	-306.8	-5.00	-15.62
CAC	France	3,068.3	-174.5	-5.38	-19.36
SMI	Swiss	5,588.6	-142.7	-2.49	-13.17
<b>BRIC</b>					
BOVESPA	Brazil	57,322.8	-1,015.6	-1.74	-17.29
MICEX	Russia	1,456.3	-42.3	-2.82	-13.73
SENSEX	India	17,480.8	-224.2	-1.27	-14.77
NIFTY	India	5,258.0	-68.7	-1.29	-14.29
SHCOMP	China	2,470.0	1.8	0.07	-12.04
SZCOMP	China	1,041.5	0.6	0.06	-19.32

### Developed ASIA

Nikkei	Japan	8,835.5	-152.9	-1.70	-13.62
TPX	Japan	754.5	-9.6	-1.25	-16.05
HIS	Hong kong	19,370.0	-494.9	-2.49	-15.91
KOSPI	S.Korea	1,909.6	0.6	0.03	-6.89
TAIEX	Taiwan	7,622.0	34.3	0.45	-15.05
FSSTI	Singapore	2,789.4	-66.4	-2.33	-12.56

### ASEAN

SET	Thailand	956.6	-18.2	-1.86	-7.38
PCOMP	Philippines	4,333.7	0.0	0.00	3.16
KLCI	Malaysia	1,475.6	-16.3	-1.09	-2.85
VNINDEX	Vietnam	413.8	-7.0	-1.66	-14.62

### Currency

			+/-	(%)	YTD (%)
EURUSD	Euro	1.370	-0.015	-1.12	2.38
GBPUSD	United Kingdom	1.595	-0.014	-0.86	2.16
USDCHF	Switzerland	0.887	0.010	1.15	-5.14
USDCAD	Canada	1.020	0.020	1.96	2.24
AUDUSD	Australia	1.033	-0.020	-1.91	0.94
NZDUSD	New Zealand	0.795	-0.012	-1.43	1.92
USDJPY	Japan	78.4	0.200	0.26	-3.39
USDCNY	China	6.355	0.000	0.01	-3.81
USDHKD	Hongkong	7.771	0.003	0.04	-0.02
USDSGD	Singapore	1.275	0.021	1.65	-0.64
Rupiah	Indonesia	8,945.0	92.000	1.04	-0.57

### Value

Value	(Rpbn)	Volume	(Lot)	Freq	(x)
BORN	560,929	ENRG	1,215,943	BORN	11,981
BUMI	334,034	BORN	1,207,101	ENRG	4,425
BMRI	187,448	ELTY	421,411	APIC	4,254
ASII	155,848	BNBR	360,458	BUMI	3,714
ADRO	153,118	BUMI	296,645	INAF	3,703
PGAS	148,755	BKSL	265,909	TMPI	3,399
HRUM	132,300	PNLF	231,963	STAR	3,293
BBRI	123,700	DEWA	192,490	ADRO	3,152
INDF	101,564	APIC	191,405	INDF	2,816
ENRG	97,502	INAF	170,685	ANTM	2,705

Code	Last	Ytd Chg(%)	H-5 Chg (%)	Rekomendasi	STO	RSI	MACD	Bollinger Band		Support			Resistance			H-5	
								Top	Bottom	1	2	3	1	2	3	Highest	Lowest
AALI	21,100	-21.27	4.46	Trading	59.3	59.9	370.4	21,950	20,450	20,800	20,500	20,100	21,500	21,900	22,200	22,200	19,600
ACES	3,400	19.30	0.00	StrongSell	84.8	54.9	16.0	3,475	3,275	3,400	3,375	3,375	3,425	3,425	3,450	3,400	3,125
ADRO	1,990	-25.61	-0.50	Trading	46.6	53.7	49.8	2,140	1,940	1,950	1,910	1,830	2,070	2,150	2,190	2,150	1,960
AISA	660	-15.38	0.00	Trading	56.0	47.8	(12.1)	675	625	640	620	600	680	700	720	680	600
ANTM	1,690	-31.72	-1.74	Trading	51.0	49.7	26.7	1,870	1,660	1,650	1,610	1,530	1,770	1,850	1,890	1,850	1,680
ASII	66,500	22.24	-2.64	Trading	47.1	49.9	1,054.7	70,600	66,050	65,700	64,900	63,250	68,150	69,800	70,600	70,000	66,500
BBCA	7,900	22.48	-1.25	OverBought	62.5	52.1	67.4	8,150	7,900	7,850	7,750	7,650	8,050	8,150	8,250	8,100	7,850
BBNI	3,925	3.29	-1.26	Trading	44.4	54.0	74.5	4,100	3,925	3,875	3,825	3,725	4,025	4,125	4,175	4,125	3,900
BBRI	6,550	26.57	0.77	OverBought	60.0	54.7	150.3	6,900	6,550	6,450	6,350	6,200	6,700	6,850	6,950	6,900	6,400
BDMN	4,900	-10.91	-1.51	OverSold	23.3	51.9	59.9	5,050	4,900	4,875	4,850	4,800	4,950	5,000	5,025	5,150	4,875
BISI	960	-48.66	-5.88	StrongBuy	17.1	42.5	(8.6)	1,085	940	940	915	880	1,000	1,035	1,060	1,100	950
BMRI	6,800	5.43	0.00	OverBought	62.5	53.3	172.6	7,400	6,700	6,700	6,550	6,300	7,100	7,350	7,500	7,300	6,650
BSDE	900	2.27	-3.23	OverSold	35.3	49.5	8.0	935	900	885	870	855	915	930	945	950	880
BTEL	280	19.15	-1.75	Trading	50.0	34.0	(10.6)	298	278	272	264	252	292	304	312	305	275
BUMI	2,150	-31.20	-3.37	Trading	47.6	47.1	17.7	2,525	2,100	2,050	1,950	1,775	2,325	2,500	2,600	2,500	2,100
BWPT	1,160	-11.45	2316.67	OverSold	23.8	55.1	25.3	1,240	1,140	1,150	1,130	1,110	1,190	1,210	1,230	1,230	1,150
ELTY	111	-31.06	-5.13	StrongBuy	18.9	43.0	(1.1)	125	109	109	107	102	116	121	123	126	111
EXCL	4,950	-5.71	-6.60	StrongBuy	6.8	47.6	47.8	5,550	4,675	4,950	4,925	4,900	5,000	5,025	5,050	5,700	4,925
GGRM	56,900	38.61	0.26	Trading	56.3	52.5	982.9	60,500	56,300	56,300	55,650	54,400	58,200	59,450	60,100	61,150	55,100
HEXA	8,250	13.79	10.74	StrongSell	87.2	67.9	90.7	8,450	7,550	7,950	7,600	7,450	8,450	8,600	8,950	8,250	7,400
HRUM	7,850	-16.93	63.54	OverSold	35.2	54.2	125.1	8,300	7,650	7,700	7,550	7,350	8,050	8,250	8,400	8,500	7,600
INCO	3,500	-29.65	6.87	StrongSell	80.0	56.6	75.1	3,875	3,300	3,450	3,375	3,275	3,625	3,725	3,800	3,725	3,225
INDF	5,000	1.01	-10.71	StrongBuy	14.7	37.9	(4.4)	5,750	4,800	4,925	4,850	4,700	5,150	5,300	5,375	5,750	4,975
INDY	2,575	-49.51	-1.90	Trading	48.3	47.3	16.3	3,050	2,475	2,500	2,400	2,250	2,750	2,900	3,000	3,050	2,550
INTP	15,250	-4.98	0.99	OverBought	75.8	54.8	526.4	16,800	15,000	14,950	14,600	13,950	15,950	16,600	16,950	16,350	14,900
ISAT	5,150	-5.50	1.98	OverBought	69.2	52.2	(8.4)	5,450	5,050	5,050	4,950	4,750	5,350	5,550	5,650	5,450	4,950
ITMG	43,550	-19.80	4.94	StrongSell	83.8	56.5	651.6	46,400	41,300	42,950	42,300	41,350	44,550	45,500	46,150	45,100	40,700
JSMR	3,750	5.63	-3.23	StrongBuy	14.3	43.5	(6.3)	3,950	3,725	3,700	3,650	3,550	3,850	3,950	4,000	3,975	3,750
KLBF	3,375	1.50	-2.17	Trading	42.1	49.1	31.7	3,550	3,375	3,350	3,300	3,225	3,475	3,550	3,600	3,550	3,375
LSIP	2,125	-16.34	3.66	Trading	57.6	52.3	25.2	2,275	2,100	2,100	2,050	2,000	2,200	2,250	2,300	2,300	2,025
MAPI	4,875	75.68	2.09	Trading	59.3	57.2	126.9	5,075	4,825	4,775	4,650	4,550	5,000	5,100	5,225	5,150	4,625
PGAS	2,925	-34.64	6.36	OverBought	66.7	54.5	62.7	3,075	2,875	2,900	2,850	2,775	3,025	3,100	3,150	3,100	2,725
PTBA	17,750	-25.89	2.31	OverBought	69.4	53.8	335.7	19,250	17,100	17,350	16,950	16,350	18,350	18,950	19,350	18,800	17,200
RALS	640	-25.58	-1.54	Trading Sell	38.5	38.3	(14.7)	690	635	20,870	20,870	20,870	20,870	20,870	20,870	690	640
SGRO	2,975	-8.46	2.59	Trading	50.0	50.4	0.0	3,125	2,925	2,925	2,875	2,775	3,075	3,175	3,225	3,175	2,875
SMCB	1,910	-14.16	2.14	OverBought	72.7	55.8	21.6	1,980	1,870	1,890	1,860	1,830	1,950	1,980	2,010	1,960	1,850
SMGR	9,000	-8.63	0.00	OverBought	62.9	52.7	203.7	9,650	8,950	8,750	8,500	8,100	9,400	9,800	10,050	9,550	8,900
SMRA	1,170	8.33	3.54	StrongSell	95.7	59.1	14.9	1,190	1,140	1,160	1,150	1,140	1,180	1,190	1,200	1,170	1,090
TINS	1,910	-32.98	1.60	OverBought	62.5	51.3	12.5	2,070	1,870	1,870	1,830	1,760	1,980	2,050	2,090	2,050	1,850
TLKM	7,400	-7.50	0.68	OverBought	60.0	53.2	14.4	7,550	7,350	7,400	7,350	7,300	7,500	7,550	7,600	7,550	7,250
UNTR	23,700	-2.47	-1.66	Trading	41.9	53.9	606.7	25,500	23,500	23,350	23,000	22,250	24,450	25,200	25,550	25,750	23,700
UNVR	15,650	-2.49	-3.40	OverSold	20.0	44.6	(74.5)	16,150	15,350	15,450	15,250	15,050	15,850	16,050	16,250	16,400	15,450

S1 = Support 1      S2 = Support 2      S3 = Support 3  
 R1 = Resisten 1      R2 = Resisten 2      R2 = Resisten 2  
 STO = Stochastic Oscillator  
 RSI = Relative Strength Index  
 MACD = Moving Average Convergence Divergence  
 H-5 = 5 hari sebelumnya

## RESEARCH TEAM

---

<b>Andrian Tanuwijaya</b>	Equity Analyst	(andrian.tanuwijaya@trimegah.com)
<b>Hanel Topada Era Tania</b>	Equity Analyst	(hanel.tania@trimegah.com)
<b>Paul Raymond Widjaja</b>	Equity Analyst	(paul.widjaja@trimegah.com)
<b>Michele Gabriela</b>	Equity Analyst	(michele.gabriela@trimegah.com)
<b>T Hedy Arifien</b>	Technical Analyst	(hedy@trimegah.com)
<b>Rovandi</b>	Research Assistant	(rovandi@trimegah.com)

## EQUITY CAPITAL MARKET TEAM

---

<b>Nathanael Benny Prasetyo</b>	Head of Retail ECM	(benny.prasetyo@trimegah.com)
<b>Windra Djulnaily</b>	Pluit, Jakarta	(windra.djulnaily@trimegah.com)
<b>Ariawan Anwar</b>	Artha Graha, Jakarta	(ariawan.anwar@trimegah.com)
<b>Ferry Zabur</b>	Kelapa Gading, Jakarta	(ferry.zabur@trimegah.com)
<b>Wirjawan Joesoef</b>	Mangga Dua, Jakarta	(iwan@trimegah.com)
<b>Lukman Abdul Azis</b>	Kebon Jeruk, Jakarta	(lukman@trimegah.com)
<b>Untung Wijaya</b>	Semarang, Jawa Tengah	(untung.wijaya@trimegah.com)
<b>Sonny Muljadi</b>	Surabaya, Jawa Timur	(sonny.muljadi@trimegah.com)
<b>Ni luh Ketut Sri Agustini</b>	Denpasar, Bali	(sri.agustini@trimegah.com)
<b>Philip Fernando Suwandi</b>	Makassar, Sulawesi Selatan	(philip.fs@trimegah.com)
<b>agus.jatmiko</b>	Balikpapan, Kalimantan Timur	(agus.jatmiko@trimegah.com)
<b>Asep Saepudin</b>	Bandung, Jawa Barat	(asep.saepudin@trimegah.com)
<b>Ariffianto</b>	Cirebon, Jawa Barat	(ariffianto@trimegah.com)
<b>Very Wijaya</b>	Medan, Sumatera Utara	(very.wijaya@trimegah.com)
<b>Tantie Rivi Watie</b>	Pekanbaru, Riau	(tantierw@trimegah.com)
<b>Agus Bambang Suseno</b>	Solo, Jawa Tengah	(agus.suseno@trimegah.com)
<b>Untung Wijaya</b>	Yogyakarta, Jawa Tengah	(untung.wijaya@trimegah.com)
<b>Donny Kristanto Setiadi</b>	Palembang, Sumatra Selatan	(donny.kristanto@trimegah.com)
<b>Rr. Putri Ayu Erikusuma</b>	Malang, Jawa Timur	(putri.ayu@trimegah.com)

**PT Trimegah Securities Tbk**  
18<sup>th</sup> Fl, Artha Graha Building  
Jl. Jend. Sudirman Kav. 52-53  
Jakarta 12190, INDONESIA  
Tel : (6221) 2924 9088 Fax : (6221) 2924 9163

## DISCLAIMER

This report has been prepared by PT Trimegah Securities Tbk on behalf of itself and its affiliated companies and is provided for information purposes only. Under no circumstances is it to be used or considered as an offer to sell, or a solicitation of any offer to buy. This report has been produced independently and the forecasts, opinions and expectations contained herein are entirely those of Trimegah Securities.

While all reasonable care has been taken to ensure that information contained herein is not untrue or misleading at the time of publication, Trimegah Securities makes no representation as to its accuracy or completeness and it should not be relied upon as such. This report is provided solely for the information of clients of Trimegah Securities who are expected to make their own investment decisions without reliance on this report. Neither Trimegah Securities nor any officer or employee of Trimegah Securities accept any liability whatsoever for any direct or consequential loss arising from any use of this report or its contents. Trimegah Securities and/or persons connected with it may have acted upon or used the information herein contained, or the research or analysis on which it is based, before publication. Trimegah Securities may in future participate in an offering of the company's equity securities.