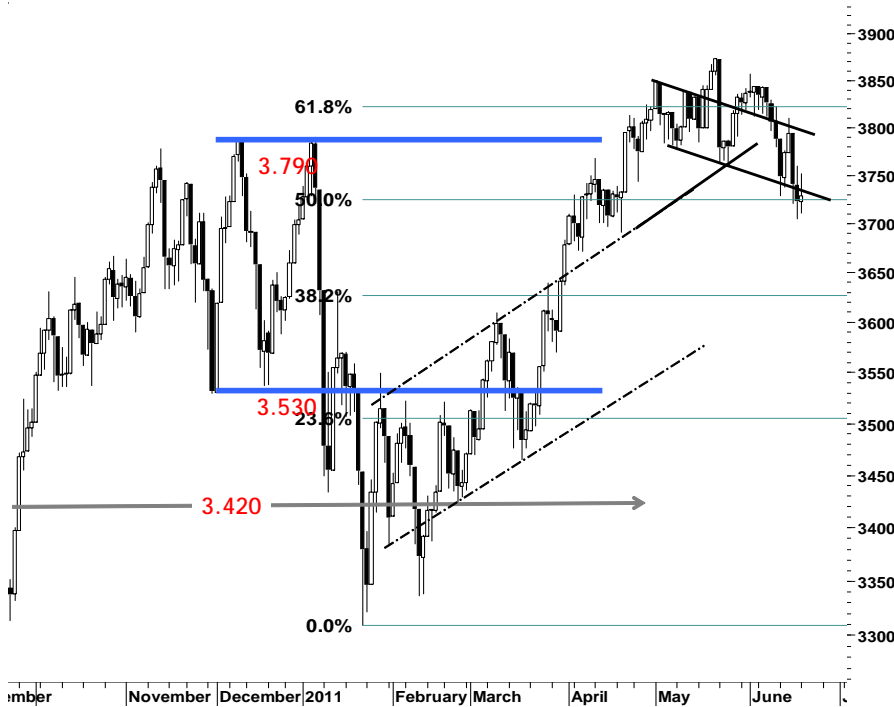


IHSG

3.729,1

6,8 0,18%

Ulasan Pasar

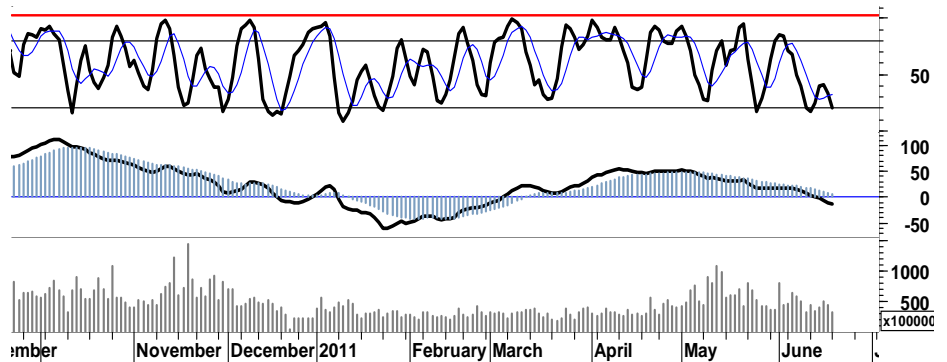


Minimnya sentimen positif serta berlanjutnya kekhawatiran akan perlambatan pertumbuhan perekonomian yang diikuti oleh pelemahan mayoritas indeks di bursa-bursa utama Asia, IHSG hanya mampu bergerak moderat dalam rentang harga 3.711 - 3.752 dengan total 80rb transaksi. IHSG pada akhir sesi perdagangan kemarin membukukan nilai positif 0,2%, dan ditutup di level 3.729.

Meskipun aksi beli sejumlah saham unggulan yang telah memasuki zona jenuh jual berhasil mendorong IHSG menguji resistensi harga di level 3.750, namun tekanan aksi profit taking serta pelaku asing yang mencatatkan nilai penjualan bersih sebesar Rp40miliar menahan IHSG berada di zona negatifnya.

Penurunan pertumbuhan rasio volume perdagangan sebesar 22% dibandingkan hari perdagangan sebelumnya, serta leading maupun lagging indicator penunjang yang belum dapat memberikan konfirmasi serta signal positif bagi

IHSG. Kami perkirakan IHSG di hari ini akan mencoba bergerak serupa dalam interval harga 3.720-3.780.



S1	S2	R1	R2
3,710	3,690	3,750	3,770

Saham Pilihan

Saham	Harga (Rp)	Rekomendasi	Stochastic	RSI	BB Top	BB Bottom	S1	S2	R1	R2
ADRO	2,300	OverSold	21.74	41.68	2,450	2,225	2,275	2,250	2,400	2,425
BMRI	6,850	OverSold	28.57	44.45	7,000	6,700	6,800	6,700	7,000	7,100
GGRM	45,300	Trading	50.29	57.27	46,550	44,000	44,500	43,700	46,100	46,900
KLBF	3,300	Trading	50.00	42.42	3,350	3,250	3,250	3,200	3,400	3,450
MYOR	13,000	TakeProfit	79.41	62.71	13,150	12,800	12,900	12,750	13,150	13,300
SMGR	9,650	Trading Sell	89.66	57.48	9,900	9,250	9,600	9,550	9,750	9,800

ADRO

2,300

OverSold



Dengan memperketat stop-loss pada support harga 2.200 dalam ruang pelemahan yang telah semakin sempit, bargain hunting pada ADRO patut untuk dicermati.

Akumulasi ataupun BuyBack dapat dilakukan apabila ADRO mampu bertahan pada support 2.250.

Probabilita pergerakan ADRO pada perdagangan hari ini, terbuka dalam rentang 2.250-2.400.

S1	S2	R1	R2
2,275	2,250	2,400	2,425

BMRI

6,850

OverSold



Secara umum, BMRI masih berada dalam kondisi bullish.

Resistensi pada celah harga yang terbuka di level 6.950, merupakan momentum yang dapat dimanfaatkan dalam kondisi ruang BMRI yang moderat.

S1	S2	R1	R2
6,800	6,700	7,000	7,100

GGRM

45,300

Trading



Waspada! potensi aksi profit taking yang akan membayangi pergerakan GGRM, dalam upaya mencapai target resistensi harga 46.500.

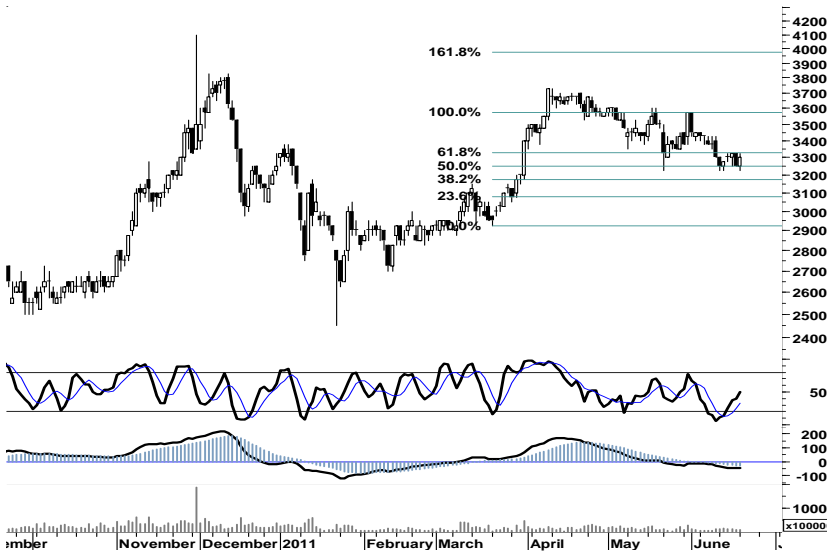
Kami perkirakan GGRM pada perdagangan hari ini, akan mencoba bergerak dalam rentang harga 44.500 - 46.100.

S1	S2	R1	R2
44,500	43,700	46,100	46,900

KLBF

3,300

Trading



Signal positif pada stochastic oscillator membuka peluang bagi KLBF untuk keluar dari area konsolidasi, sekaligus melanjutkan rally menuju pencapaian target resisten 3.575.

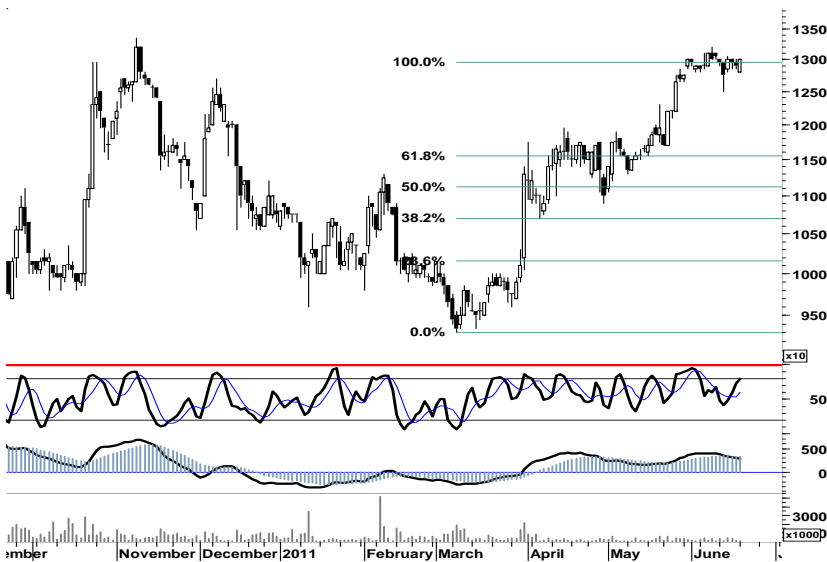
Waspada kemungkinan adanya tekanan jual, apabila KLBF gagal melakukan penetrasi resistensi 3.350 pada retracement 62%.

S1	S2	R1	R2
3,250	3,200	3,400	3,450

MYOR

13,000

TakeProfit



Sekalipun masih terbuka lebar bagi MYOR untuk melanjutkan rally penguatan, serta membentuk rekor harga baru.

Akumulasi profit yang telah di dapat pada saat MYOR menguji swing positif pada resistensi 13.150.

Spekulasi pembelian dapat dilakukan apabila MYOR berhasil mencetak rekor harga baru, atau melakukan penetrasi resistensi 13.300-13.350.

S1	S2	R1	R2
12,900	12,750	13,150	13,300

SMGR

9,650

Trading Sell



Akumulasi profit yang telah diperoleh, pada saat SMGR bergerak menguji resistensi kuat di level 9.800.

Namun cermati peluang untuk melakukan pembelian, apabila SMGR mampu menembus resistensi tersebut dan merambah menguji resistensi pada siklus harga di level 9.950.

S1	S2	R1	R2
9,600	9,550	9,750	9,800

Code	Last	Ytd Chg(%)	H-5 Chg (%)	Rekomendasi	STO	RSI	MACD	Bollinger Band		Support			Resistance			H-5	
								Top	Bottom	1	2	3	1	2	3	Highest	Lowest
AALI	23,000	-14.18	1.32	Trading	42.9	47.7	(115.0)	23,200	22,650	22,850	22,650	22,500	23,200	23,350	23,550	23,250	22,550
ACES	2,900	1.75	-3.33	Trading Sell	80.0	56.4	79.5	3,050	2,850	2,900	2,900	2,875	2,925	2,950	2,950	3,000	2,600
ADRO	2,300	-14.02	-4.17	OverSold	21.7	41.7	5.6	2,450	2,225	2,275	2,250	2,200	2,350	2,400	2,425	2,450	2,250
AKRA	1,810	6.47	0.00	Trading	53.3	65.9	38.3	1,820	1,790	1,800	1,780	1,770	1,830	1,840	1,860	1,820	1,770
ANTM	2,000	-19.19	-5.88	Trading Buy	2.4	17.8	(43.1)	2,150	1,930	1,980	1,960	1,920	2,040	2,080	2,100	2,150	1,990
ASII	58,450	7.44	3.63	OverBought	74.5	51.6	123.6	59,450	57,300	58,150	57,850	57,500	58,800	59,150	59,450	59,100	55,950
BBCA	7,250	12.40	3.57	OverBought	73.3	57.2	(20.7)	7,350	7,050	7,200	7,150	7,100	7,300	7,350	7,400	7,300	7,000
BBNI	3,600	-5.26	-2.04	Accumulate	27.3	30.2	(68.8)	3,725	3,575	3,575	3,525	3,500	3,650	3,675	3,725	3,750	3,550
BBRI	6,250	20.77	0.00	OverSold	29.4	49.0	(13.4)	6,450	6,100	6,200	6,150	6,100	6,300	6,350	6,400	6,400	6,100
BBTN	1,620	-2.99	1.25	Trading	47.6	43.5	(12.7)	1,650	1,610	1,610	1,600	1,590	1,630	1,640	1,650	1,660	1,590
BDMN	5,900	7.27	-2.48	Accumulate	23.5	39.9	(56.0)	6,050	5,800	5,850	5,800	5,700	6,000	6,100	6,150	6,100	5,800
BISI	1,280	-31.55	-8.57	Trading Buy	6.1	14.2	(81.1)	1,410	1,220	1,270	1,260	1,240	1,300	1,320	1,330	1,440	1,270
BMRI	6,850	6.20	-0.72	OverSold	28.6	44.5	(52.6)	7,000	6,700	6,800	6,700	6,650	6,950	7,000	7,100	7,050	6,700
BSDE	850	-3.41	-3.41	OverSold	31.8	40.5	(12.6)	895	810	840	825	820	860	865	880	890	810
BTEL	355	51.06	1.43	Trading Sell	86.7	39.5	(6.2)	362	353	347	339	332	362	369	377	360	330
BUMI	2,975	-4.80	-10.53	Trading Buy	12.5	25.3	(77.9)	3,375	2,850	2,925	2,875	2,775	3,075	3,175	3,225	3,400	2,950
CTRA	420	20.00	-2.33	OverSold	25.0	50.4	6.0	436	413	410	400	390	430	440	450	440	410
ELTY	139	-13.66	-10.32	Trading Buy	12.1	31.6	(2.7)	155	133	136	133	128	144	149	152	157	138
EXCL	6,200	18.10	4.20	Trading Sell	90.6	55.0	(22.3)	6,450	6,050	6,150	6,100	6,000	6,300	6,400	6,450	6,300	5,700
GGRM	45,300	10.35	3.54	Trading	50.3	57.3	731.0	46,550	44,000	44,500	43,700	43,300	45,700	46,100	46,900	46,500	43,600
HEXA	6,200	-14.48	0.00	Trading Buy	16.7	47.3	18.2	6,450	6,100	6,200	6,200	6,200	6,200	6,200	6,200	6,450	6,150
INCO	4,500	-9.55	-1.64	Accumulate	37.9	31.0	(85.3)	4,600	4,450	4,475	4,450	4,400	4,550	4,600	4,625	4,625	4,375
INDF	5,350	8.08	2.88	Trading	41.2	49.4	(55.3)	5,450	5,200	5,300	5,250	5,200	5,400	5,450	5,500	5,450	5,150
INDY	3,675	-27.94	-6.96	Accumulate	20.0	25.9	(73.3)	4,050	3,600	3,625	3,550	3,450	3,800	3,900	3,975	4,000	3,650
INTP	16,550	3.12	0.30	Trading	59.5	44.5	(56.7)	17,000	16,550	16,350	16,150	15,850	16,850	17,150	17,350	17,000	16,350
ISAT	5,100	-6.42	0.00	Trading Sell	80.0	41.0	(35.5)	5,250	5,100	5,000	4,900	4,800	5,200	5,300	5,400	5,200	5,000
ITMG	44,500	-18.05	-3.26	Trading Buy	13.0	32.6	(466.3)	46,700	43,400	44,100	43,650	43,200	45,000	45,450	45,900	46,750	44,000
JSMR	3,450	-2.82	3.76	OverBought	72.2	55.4	4.3	3,475	3,425	3,425	3,400	3,375	3,475	3,500	3,525	3,475	3,325
KLBF	3,300	-0.75	1.54	Trading	50.0	42.4	(54.8)	3,350	3,250	3,250	3,200	3,150	3,350	3,400	3,450	3,325	3,225
LSIP	2,275	-10.43	-2.15	Accumulate	20.0	36.7	(25.0)	2,400	2,225	2,250	2,225	2,175	2,325	2,375	2,400	2,400	2,250
MYOR	13,000	20.37	0.39	TakeProfit	79.4	62.7	263.6	13,150	12,800	12,900	12,750	12,700	13,100	13,150	13,300	13,050	12,500
PGAS	4,000	-10.61	1.27	OverBought	64.3	49.9	(13.5)	4,050	3,950	3,975	3,950	3,925	4,025	4,050	4,075	4,025	3,900
PTBA	20,550	-14.20	-1.91	Accumulate	35.9	30.9	(225.5)	21,100	20,450	20,400	20,250	20,000	20,800	21,050	21,200	21,100	20,500
RALS	760	-11.63	-2.56	Trading Sell	30.8	43.4	1.7	795	755	20,870	20,870	20,870	20,870	20,870	20,870	800	760
SGRO	3,300	1.54	-2.22	Trading Buy	11.8	37.7	(18.1)	3,400	3,250	3,300	3,275	3,250	3,350	3,375	3,400	3,400	3,275
SMCB	2,175	-2.25	3.57	Trading Sell	80.0	50.9	5.5	2,275	2,150	2,150	2,125	2,075	2,225	2,275	2,300	2,250	2,050
SMGR	9,650	-2.03	4.89	Trading Sell	89.7	57.5	(14.1)	9,900	9,250	9,600	9,550	9,500	9,700	9,750	9,800	9,700	9,150
SMRA	1,130	4.63	1.80	Trading	57.9	49.2	(5.2)	1,150	1,120	1,120	1,100	1,090	1,150	1,160	1,180	1,150	1,080
TINS	2,375	-16.67	-5.00	Trading Buy	19.2	20.1	(74.5)	2,550	2,300	2,350	2,300	2,275	2,425	2,450	2,500	2,575	2,325
TLKM	6,950	-13.13	-6.71	Trading Buy	15.2	29.9	(134.6)	7,400	6,700	6,900	6,800	6,750	7,050	7,100	7,200	7,500	6,800
UNTR	22,950	-5.56	1.10	Trading	52.6	56.4	135.5	23,100	22,700	22,800	22,600	22,450	23,150	23,300	23,500	23,100	22,500
UNVR	14,750	-8.10	1.03	Trading	52.4	45.7	(46.5)	14,900	14,750	14,700	14,650	14,500	14,900	15,050	15,100	14,950	14,600

S1 = Support 1 S2 = Support 2 S3 = Support 3
 R1 = Resisten 1 R2 = Resisten 2 R2 = Resisten 2
 STO = Stochastic Oscillator
 RSI = Relative Strength Index
 MACD = Moving Average Convergence Divergence
 H-5 = 5 hari sebelumnya

RESEARCH TEAM

Andrian Tanuwijaya	Equity Analyst	(andrian.tanuwijaya@trimegah.com)
Hanel Topada Era Tania	Equity Analyst	(hanel.tania@trimegah.com)
Paul Raymond Widjaja	Equity Analyst	(paul.widjaja@trimegah.com)
T Hedy Arifien	Technical Analyst	(hedy@trimegah.com)
Rovandi	Research Assistant	(rovandi@trimegah.com)

EQUITY CAPITAL MARKET TEAM

Nathanael Benny Prasetyo	Head of Retail ECM	(benny.prasetyo@trimegah.com)
Windra Djulnaily	Pluit, Jakarta	(windra.djulnaily@trimegah.com)
Ariawan Anwar	Artha Graha, Jakarta	(ariawan.anwar@trimegah.com)
Ferry Zabur	Kelapa Gading, Jakarta	(ferry.zabur@trimegah.com)
Wirjawan Joesoef	Mangga Dua, Jakarta	(iwan@trimegah.com)
Lukman Abdul Azis	Kebon Jeruk, Jakarta	(lukman@trimegah.com)
Tutik Suciati	Semarang, Jawa Tengah	(tuty.s@trimegah.com)
Sonny Muljadi	Surabaya, Jawa Timur	(sonny.muljadi@trimegah.com)
Ni Luh Ketut Sri Agustini	Denpasar, Bali	(sri.agustini@trimegah.com)
Philip Fernando Suwandi	Makassar, Sulawesi Selatan	(philip.fs@trimegah.com)
agus.jatmiko	Balikpapan, Kalimantan Timur	(agus.jatmiko@trimegah.com)
Asep Saepudin	Bandung, Jawa Barat	(asep.saepudin@trimegah.com)
Asep Saepudin	Cirebon, Jawa Barat	(asep.saepudin@trimegah.com)
Very Wijaya	Medan, Sumatera Utara	(very.wijaya@trimegah.com)
Tantie Rivi Watie	Pekanbaru, Riau	(tantierw@trimegah.com)
Agus Bambang Suseno	Solo, Jawa Tengah	(agus.suseno@trimegah.com)
Agus Bambang Suseno	Yogyakarta, Jawa Tengah	(agus.suseno@trimegah.com)
Donny Kristanto Setiadi	Palembang, Sumatra Selatan	(donny.kristanto@trimegah.com)
Sonny Muljadi	Malang, Jawa Timur	(sonny.muljadi@trimegah.com)

PT Trimegah Securities Tbk
18th Fl, Artha Graha Building
Jl. Jend. Sudirman Kav. 52-53
Jakarta 12190, INDONESIA
Tel : (6221) 2924 9088 Fax : (6221) 2924 9163

DISCLAIMER

This report has been prepared by PT Trimegah Securities Tbk on behalf of itself and its affiliated companies and is provided for information purposes only. Under no circumstances is it to be used or considered as an offer to sell, or a solicitation of any offer to buy. This report has been produced independently and the forecasts, opinions and expectations contained herein are entirely those of Trimegah Securities.

While all reasonable care has been taken to ensure that information contained herein is not untrue or misleading at the time of publication, Trimegah Securities makes no representation as to its accuracy or completeness and it should not be relied upon as such. This report is provided solely for the information of clients of Trimegah Securities who are expected to make their own investment decisions without reliance on this report. Neither Trimegah Securities nor any officer or employee of Trimegah Securities accept any liability whatsoever for any direct or consequential loss arising from any use of this report or its contents. Trimegah Securities and/or persons connected with it may have acted upon or used the information herein contained, or the research or analysis on which it is based, before publication. Trimegah Securities may in future participate in an offering of the company's equity securities.