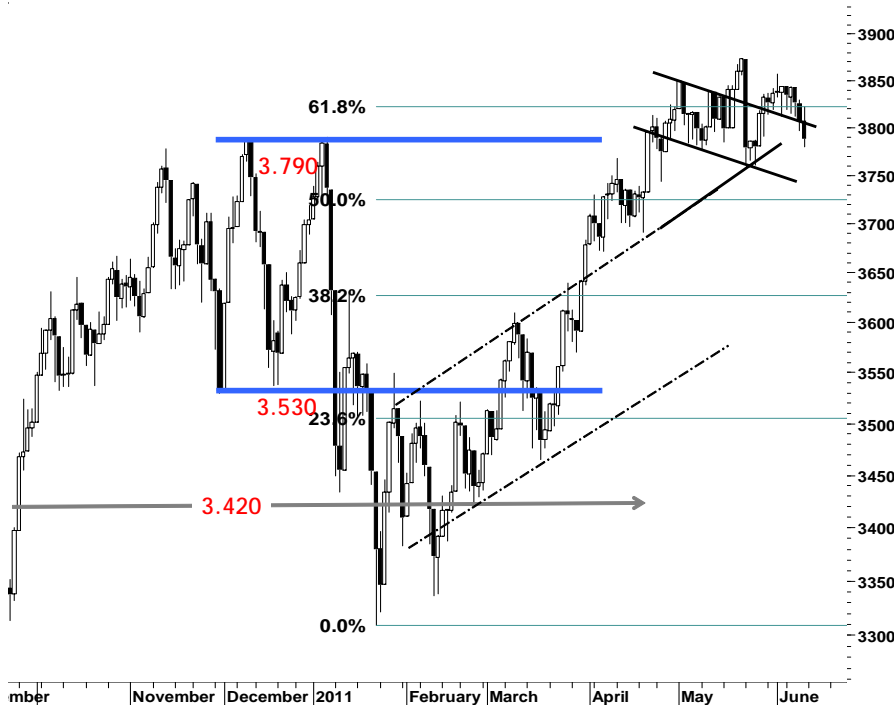


IHSG

3.787,6 -18,5 -0,49%

Ulisan Pasar



Sentimen negatif dari indeks bursa Amerika (DJI, S&P500) yang masih terguncang sebagai dampak serta akibat adanya indikasi perlambatan perekonomian dunia, kembali memberikan tekanan jual terhadap IHSG di perdagangan kemarin. IHSG kembali terpuruk 0,49% serta ditutup melemah pada level 3.788, menguji basis support harga 3.750.

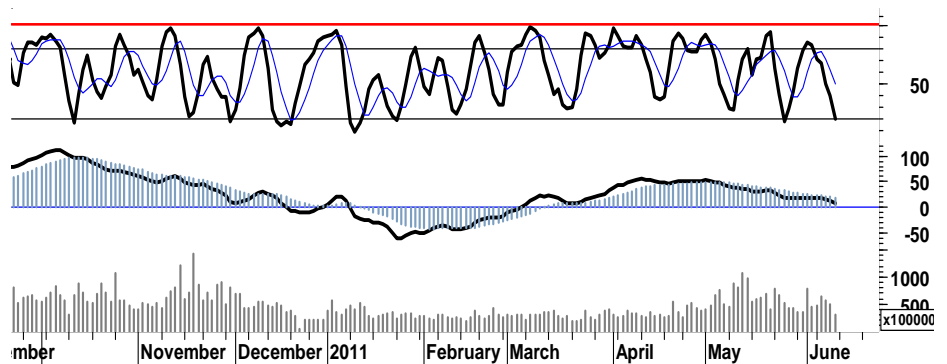
Terkoreksi 18point kemarin, menyeret IHSG kembali memasuki area downtrend serta belum terlihat munculnya potensi pembalikan arah atau pullback. Dimana stop-loss dari support level 3.750 menjadi penting, sekaligus merupakan titik penentu arah pergerakan IHSG selanjutnya setelah IHSG gagal untuk kembali pada level 3.790.

Para pelaku asingpun kembali mencatat nilai penjualan bersih sebesar Rp142miliar, yang juga diikuti oleh penurunan rasio volume transaksi sebesar 37%. Memberikan indikasi negatif terhadap pergerakan IHSG di awal pekan ini yang

dikhawatirkan akan kembali dibayang-bayangi oleh tekanan jual, serta sepenuhnya kembali dalam area downtrend apabila gagal melakukan pullback pada area support 3.754-3.755.

Meskipun belum terlihat signal positif reversal sebagaimana halnya konfirmasi berlanjutnya tekanan pelemahan terhadap IHSG, setidaknya penyempitan ruang tekanan yang terlihat pada beberapa leading indicator yang ada merupakan momentum untuk melakukan akumulasi ataupun pembelian selektif pada sejumlah saham unggulan yang telah mengalami tekanandi atas 2% selama sepekan kemarin.

Kami perkirakan IHSG pada perdagangan di awal pekan ini, akan mencoba bergerak konsolidasi dalam interval harga 3.765-3.815.



S1	S2	R1	R2
3,770	3,755	3,815	3,840

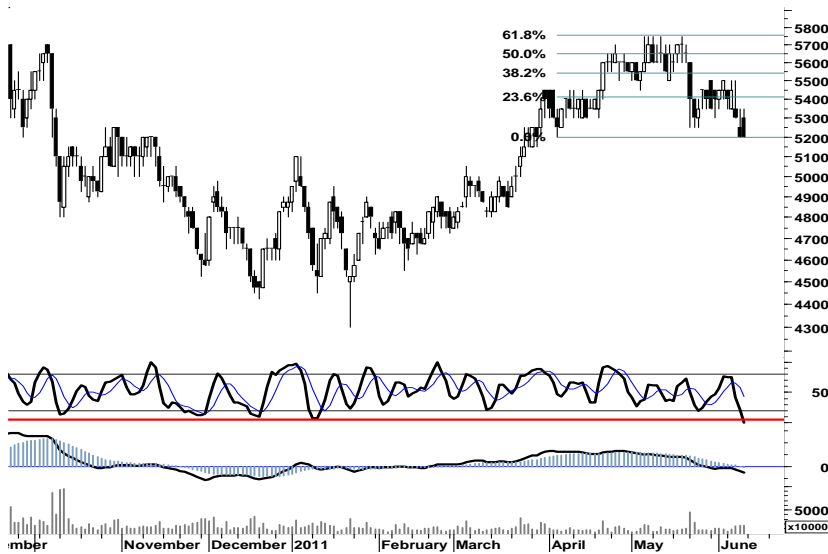
Saham Pilihan

Saham	Harga (Rp)	Rekomendasi	Stochastic	RSI	BB Top	BB Bottom	S1	S2	R1	R2
AALI	22,800	Spec. Buy	16.39	41.47	23,750	22,550	22,500	22,150	23,550	23,900
BBCA	7,000	Spec. Buy	-	42.98	7,150	6,900	7,000	6,950	7,150	7,200
EXCL	5,800	Spec. Buy	11.11	31.73	6,000	5,750	5,800	5,750	5,950	6,000
INDF	5,200	Spec. Buy	-	37.60	5,500	5,100	5,150	5,100	5,400	5,450
INTP	16,550	Spec. Buy	11.11	43.59	17,650	16,150	16,450	16,300	17,100	17,250
SMGR	9,250	Accumulate	20.00	35.88	9,550	9,100	9,200	9,150	9,350	9,400

INDF

5,200

Spec. Buy



Stochastic yang telah jauh di area oversold, seyogyanya mengembalikan INDF untuk bergerak dengan support siklus 5.200.

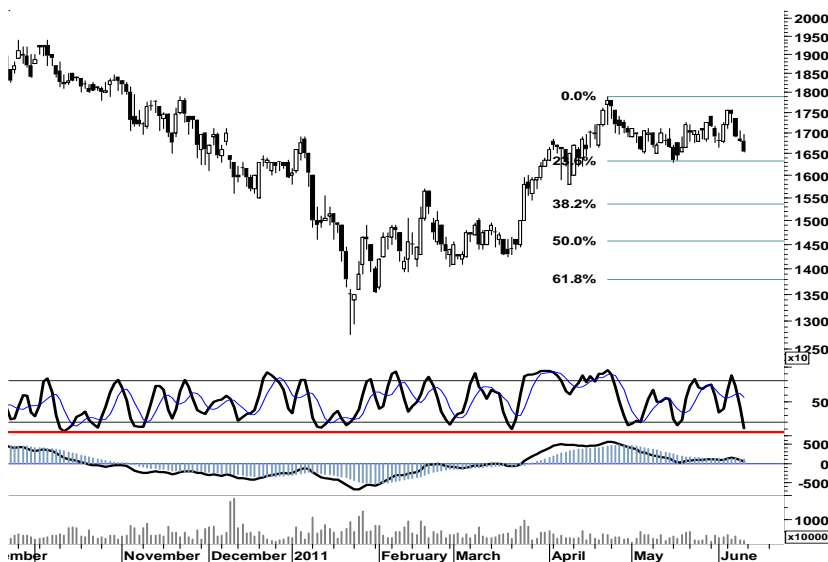
Dengan demikian spekulasi pembelian dapat dilakukan pada interval support 5.100-5.150.

S1	S2	R1	R2
5,150	5,100	5,400	5,450

INTP

16,550

Spec. Buy



Sebagaimana halnya INDF, seyogyanya INTP dapat melakukan pull-back pada area support 16.350 - 16.400.

Spekulasi pembelian dapat dilakukan, apabila INDF mampu bergerak di atas 16.450.

S1	S2	R1	R2
16,450	16,300	17,100	17,250

SMGR

9,250

Accumulate



Indikasi signal positif 'golden-cross' pada stochastic oscillator, membuka peluang SMGR untuk bergerak mencapai resisten harga terdekat di level 9.400.

S1	S2	R1	R2
9,200	9,150	9,350	9,400

TRADE DATA

JCI (IHSG) 3,787.6 -18.5 -0.49%

YTD (Rp)	2.3%	Volume (m) :	4,053
YTD (USD)	7.6%	Nilai (Rpbn) :	3,097
Moving Avg 20day	3,822	Mkt Cap (Rptr) :	3,404
Moving Avg 50day	3,785	Market P/E (x) :	16.2
Moving Avg 200day	3,585	Market Div. Yield (%) :	2.4

Indonesia & Sectors +/- (%) YTD (%)

MSCI Indonesia	4,664.5	-25.1	-0.53	2.59
JII	520.5	-5.1	-0.96	-2.32
LQ45	670.1	-3.3	-0.49	1.31
JAKFIN Index	492.3	0.1	0.00	5.50
JAKINFR Index	768.2	0.1	0.00	-6.22
JAKMINE Index	3,269.8	-26.9	-0.01	-0.13
JAKCONS Index	1,121.0	-0.2	-0.00	2.41
JAKTRAD Index	510.7	-3.4	-0.01	7.73
JAKMIND Index	1,046.2	-23.1	-0.02	8.19
JAKBIND Index	394.6	-2.9	-0.01	1.91
JAKPROP Index	208.3	-1.9	-0.01	2.58
JAKAGRI Index	2,348.1	-10.5	-0.00	2.79

Commodities +/- (%) YTD (%)

CRB Index	348.04	-2.8	-0.80	4.58
Oil & Gas				
Crude Oil	99.29	-2.6	-2.59	8.66
Natural Gas	4.76	0.1	1.78	7.99
COAL (Rotterdam)	124.25	-0.5	-0.40	-5.44
COAL (Amsterdam)	125.95	0.7	0.56	0.00
COAL (Australia,wk)	118.65	0.0	0.00	-3.06
Industrial Metals				
Aluminium	2,605.3	-41.0	-1.55	5.94
Nickel	22,850	-350	-1.51	-7.68
Tin	25,350	-355	-1.38	-5.76
Precious Metal				
Gold	1,529.20	-13.5	-0.88	7.58
Silver	36.33	-1.1	-2.93	17.53
Soft Commodities				
CPO (Malaysia)	3,260.00	-47.0	-1.42	-14.53
CPO (Netherlands)	1,137.50	2.5	0.22	-11.48
Rubber	5,200.45	-54.7	-1.04	4.14
Corn	787.00	1.5	0.19	25.12
Wheat	759.25	14.3	1.91	-4.41
Soybeans	1,387.25	-6.5	-0.47	-0.47
Rice (Indonesia)	6,850.00	0.0	0.00	-3.52

Regional Indices +/- (%) YTD (%)

MXWO	MSCI World	1,288.5	-19.4	-1.49	0.66
SPX	S&P 500	1,271.0	-18.0	-1.40	1.06
US					
Dow Jones Industrial		11,951.9	-172.5	-1.42	3.23
Nasdaq	US	2,643.7	-41.1	-1.53	-0.34
Europe					
EURO 50	Europe	268.1	-3.6	-1.34	-2.78
FTSE	London	5,765.8	-90.5	-1.55	-2.27
DAX	Germany	7,069.9	-89.8	-1.25	2.25
CAC	France	3,805.1	-73.6	-1.90	0.01
SMI	Swiss	6,197.3	-73.8	-1.18	-3.71
BRIC					
BOVESPA	Brazil	62,697.2	-771.7	-1.22	-9.53
MICEX	Russia	1,684.0	-8.4	-0.50	-0.24
SENSEX	India	18,268.5	-116.4	-0.63	-10.92
NIFTY	India	5,485.8	-35.3	-0.64	-10.57
SHCOMP	China	2,705.1	1.8	0.07	-3.67
SZCOMP	China	1,113.3	0.3	0.03	-13.75

Developed ASIA

Nikkei	Japan	9,514.4	47.3	0.50	-6.98
TPX	Japan	817.4	4.4	0.54	-9.06
HIS	Hong kong	22,420.4	-189.5	-0.84	-2.67
KOSPI	S.Korea	2,046.7	-24.8	-1.19	-0.21
TAIEX	Taiwan	8,837.8	-163.1	-1.81	-1.50
FSSTI	Singapore	3,078.4	-19.2	-0.62	-3.50

ASEAN

SET	Thailand	1,020.4	3.5	0.35	-1.20
PCOMP	Philippines	4,219.6	-4.8	-0.11	0.44
KLCI	Malaysia	1,556.2	5.3	0.34	2.45
VNINDEX	Vietnam	445.0	1.1	0.24	-8.18

Currency +/- (%) YTD (%)

EURUSD	Euro	1.435	-0.016	-1.12	7.20
GBPUSD	United Kingdom	1.623	-0.014	-0.85	3.94
USDCHF	Switzerland	0.843	0.002	0.19	-9.86
USDCAD	Canada	0.980	0.007	0.71	-1.81
AUDUSD	Australia	1.054	-0.009	-0.85	2.97
NZDUSD	New Zealand	0.821	-0.003	-0.41	5.28
USDJPY	Japan	80.3	-0.040	-0.05	-0.99
USDCNY	China	6.480	0.004	0.06	-1.92
USDHKD	Hongkong	7.784	0.000	0.00	0.14
USDSGD	Singapore	1.238	0.005	0.42	-3.58
Rupiah	Indonesia	8,520.0	-1.000	-0.01	-5.29

Winners

Stock	Price	(%)	Stock	Price	(%)
DSSA	16,000	10.34	ADMF	13,650	-7.14
BAEK	1,850	9.47	LPPF	2,400	-5.88
TRIO	850	7.59	BRMS	750	-5.06
GIAA	530	1.92	ASII	57,450	-2.30
SMAR	7,000	1.45	KLBF	3,300	-2.22
ICBP	5,100	0.99	ADRO	2,400	-2.04
BDMN	6,050	0.83	INTP	16,550	-1.49
JSMR	3,350	0.75	ITMG	46,600	-1.27
BMRI	7,000	0.72	BUMI	3,425	-0.72
GGRM	45,350	0.33	UNTR	22,850	-0.65

Losers

Stock	Price	(%)	Stock	Price	(%)
ADMF	13,650	-7.14	ADMF	13,650	-7.14
LPPF	2,400	-5.88	LPPF	2,400	-5.88
BRMS	750	-5.06	BRMS	750	-5.06
ASII	57,450	-2.30	ASII	57,450	-2.30
KLBF	3,300	-2.22	KLBF	3,300	-2.22
ADRO	2,400	-2.04	ADRO	2,400	-2.04
INTP	16,550	-1.49	INTP	16,550	-1.49
ITMG	46,600	-1.27	ITMG	46,600	-1.27
BUMI	3,425	-0.72	BUMI	3,425	-0.72
UNTR	22,850	-0.65	UNTR	22,850	-0.65

Value (Rpbn) Volume (Lot) Freq (x)

Value (Rpbn)	Volume (Lot)	Freq (x)
ASII 232,772	BNBR 908,688	KRAS 14,906
BUMI 203,675	DEWA 511,378	ETWA 5,487
BMRI 186,268	ELTY 353,695	ELSA 4,582
KRAS 149,572	KRAS 260,251	BHIT 3,180
TLKM 147,997	SIMP 190,730	BUMI 2,160
SIMP 118,293	ENRG 171,846	MNCN 1,693
INDF 85,832	BHIT 132,801	ASII 1,573
BBRI 82,826	MIRA 127,253	SIMP 1,497
BBNI 79,073	BRMS 119,420	PWON 1,426
BORN 49,850	BUMI 118,722	DEWA 1,393

Code	Last	Ytd Chg(%)	H-5 Chg (%)	Rekomendasi	STO	RSI	MACD	Bollinger Band		Support			Resistance			H-5	
								Top	Bottom	1	2	3	1	2	3	Highest	Lowest
AALI	22,800	-14.93	-4.40	Spec. Buy	16.4	41.5	(25.4)	23,750	22,550	22,500	22,150	21,800	23,200	23,550	23,900	23,950	22,500
ACES	3,000	5.26	15.38	StrongSell	86.0	72.5	69.2	3,300	2,625	2,875	2,750	2,675	3,075	3,150	3,275	3,075	2,600
ADRO	2,400	-10.28	-2.04	Trading	42.9	52.5	38.1	2,500	2,400	2,375	2,350	2,300	2,450	2,500	2,525	2,500	2,375
AKRA	1,800	5.88	-0.55	Trading	42.1	66.0	48.0	1,820	1,780	1,790	1,780	1,760	1,820	1,840	1,850	1,830	1,770
ANTM	2,125	-14.14	-1.16	Trading	55.6	34.5	(31.0)	2,150	2,125	2,125	2,100	2,100	2,150	2,150	2,175	2,150	2,075
ASII	57,450	5.61	-2.54	OverSold	33.3	42.7	316.0	60,250	57,100	56,900	56,300	55,250	58,550	59,600	60,200	59,750	57,350
BBCA	7,000	8.53	-2.10	Spec. Buy	-	43.0	(52.6)	7,150	6,900	7,000	6,950	6,900	7,100	7,150	7,200	7,200	7,000
BBNI	3,750	-1.32	-2.60	Accumulate	21.1	38.4	(47.5)	3,825	3,725	3,700	3,650	3,600	3,800	3,850	3,900	3,875	3,700
BBRI	6,300	21.74	-3.08	OverSold	28.6	50.3	18.2	6,450	6,250	6,300	6,250	6,200	6,400	6,450	6,500	6,500	6,250
BBTN	1,640	-1.80	0.61	Trading	50.0	45.5	(12.1)	1,680	1,620	1,630	1,620	1,600	1,660	1,680	1,690	1,670	1,630
BDMN	6,050	10.00	-2.42	OverSold	30.8	46.8	(32.7)	6,150	6,000	6,000	5,950	5,900	6,100	6,150	6,200	6,200	5,950
BISI	1,440	-22.99	-8.86	Spec. Buy	5.7	27.3	(38.8)	1,600	1,410	1,420	1,390	1,350	1,490	1,530	1,560	1,610	1,430
BMRI	7,000	8.53	-1.41	OverSold	35.7	47.3	(7.8)	7,100	6,950	6,950	6,900	6,850	7,050	7,100	7,150	7,100	6,900
BSDE	900	2.27	-1.10	Trading	44.4	48.5	0.6	920	890	890	880	870	910	920	930	920	890
BTEL	345	46.81	-5.48	Accumulate	25.0	27.1	(5.9)	373	336	335	325	315	355	365	375	370	335
BUMI	3,425	9.60	2.24	OverBought	65.0	51.1	(4.0)	3,500	3,375	3,400	3,375	3,325	3,475	3,525	3,550	3,475	3,300
CTRA	440	25.71	4.76	TakeProfit	75.0	62.8	9.8	458	417	430	420	405	455	470	480	460	415
ELTY	158	-1.86	-3.07	Spec. Buy	17.9	48.6	2.4	166	156	156	154	150	162	166	168	168	157
EXCL	5,800	10.48	-2.52	Spec. Buy	11.1	31.7	(127.8)	6,000	5,750	5,800	5,750	5,700	5,900	5,950	6,000	6,050	5,800
GGRM	45,350	10.48	1.68	TakeProfit	74.3	70.4	914.4	45,600	45,100	45,000	44,600	44,300	45,700	46,000	46,400	45,850	44,200
HEXA	6,300	-13.10	-3.82	Spec. Buy	-	48.9	63.5	6,450	6,200	6,300	6,300	6,250	6,350	6,400	6,400	6,700	6,300
INCO	4,650	-6.53	-2.62	Spec. Buy	13.6	37.1	(46.5)	4,725	4,625	4,600	4,550	4,500	4,700	4,750	4,800	4,825	4,600
INDF	5,200	5.05	-5.45	Spec. Buy	-	37.6	(61.2)	5,500	5,100	5,150	5,100	5,000	5,300	5,400	5,450	5,500	5,200
INDY	4,050	-20.59	-2.41	OverSold	21.7	42.8	1.8	4,175	4,000	4,025	3,975	3,950	4,100	4,125	4,175	4,175	4,000
INTP	16,550	3.12	-3.78	Spec. Buy	11.1	43.6	12.6	17,650	16,150	16,450	16,300	16,050	16,850	17,100	17,250	17,550	16,550
ISAT	5,150	-5.50	-1.90	Trading	50.0	41.2	(34.9)	5,250	5,150	5,150	5,100	5,100	5,200	5,200	5,250	5,250	5,100
ITMG	46,600	-14.18	-0.21	OverBought	61.4	45.1	(64.9)	47,600	46,550	46,300	45,950	45,500	47,100	47,550	47,900	47,500	46,300
JSMR	3,350	-5.63	-2.19	Spec. Buy	10.5	41.3	(10.5)	3,425	3,300	3,350	3,325	3,325	3,375	3,375	3,400	3,500	3,325
KLBF	3,300	-0.75	-4.35	Spec. Buy	5.6	39.7	(36.6)	3,475	3,275	3,275	3,225	3,150	3,400	3,475	3,525	3,450	3,300
LSIP	2,350	-7.48	-3.09	OverSold	28.6	43.8	(7.3)	2,450	2,325	2,325	2,275	2,250	2,400	2,425	2,475	2,450	2,300
MYOR	13,050	20.83	1.16	TakeProfit	68.2	71.8	371.2	13,200	12,850	13,000	12,950	12,900	13,100	13,150	13,200	13,200	12,800
PGAS	3,950	-11.73	-3.07	OverSold	30.0	43.7	(12.2)	4,025	3,950	3,950	3,925	3,900	4,000	4,025	4,050	4,075	3,900
PTBA	20,900	-12.73	-1.65	Accumulate	20.5	36.4	(207.6)	21,400	20,650	20,800	20,700	20,450	21,150	21,400	21,500	21,450	20,800
RALS	800	-6.98	-2.44	Trading Sell	20.0	53.7	15.4	845	780	20,870	20,870	20,870	20,870	20,870	20,870	840	790
SGRO	3,400	4.62	-1.45	OverSold	33.3	49.7	19.4	3,475	3,400	3,375	3,325	3,275	3,475	3,525	3,575	3,475	3,375
SMCB	2,125	-4.49	-5.56	Spec. Buy	6.3	46.9	7.5	2,250	2,075	2,125	2,100	2,075	2,175	2,200	2,225	2,250	2,125
SMGR	9,250	-6.09	-4.15	Accumulate	20.0	35.9	(37.3)	9,550	9,100	9,200	9,150	9,100	9,300	9,350	9,400	9,700	9,150
SMRA	1,120	3.70	-3.45	OverSold	20.0	44.8	(2.8)	1,200	1,090	1,110	1,100	1,080	1,140	1,160	1,170	1,200	1,110
TINS	2,550	-10.53	-1.92	Trading	40.0	33.7	(45.1)	2,625	2,525	2,525	2,500	2,475	2,575	2,600	2,625	2,600	2,525
TLKM	7,450	-6.88	-2.61	Spec. Buy	17.6	42.7	(11.2)	7,600	7,400	7,400	7,350	7,300	7,500	7,550	7,600	7,700	7,400
UNTR	22,850	-5.97	-0.65	OverBought	67.4	54.6	199.4	23,350	22,700	22,550	22,250	21,900	23,200	23,550	23,850	23,250	22,500
UNVR	14,700	-8.41	-1.67	Spec. Buy	7.1	38.5	(70.9)	15,000	14,600	14,700	14,650	14,600	14,800	14,850	14,900	14,950	14,700

S1 = Support 1 S2 = Support 2 S3 = Support 3
 R1 = Resisten 1 R2 = Resisten 2 R2 = Resisten 2
 STO = Stochastic Oscillator
 RSI = Relative Strength Index
 MACD = Moving Average Convergence Divergence
 H-5 = 5 hari sebelumnya

RESEARCH TEAM

Andrian Tanuwijaya	Equity Analyst	(andrian.tanuwijaya@trimegah.com)
Hanel Topada Era Tania	Equity Analyst	(hanel.tania@trimegah.com)
Paul Raymond Widjaja	Equity Analyst	(paul.widjaja@trimegah.com)
T Hedy Arifien	Technical Analyst	(hedy@trimegah.com)
Rovandi	Research Assistant	(rovandi@trimegah.com)

EQUITY CAPITAL MARKET TEAM

Nathanael Benny Prasetyo	Head of Retail ECM	(benny.prasetyo@trimegah.com)
Windra Djulnaily	Pluit, Jakarta	(windra.djulnaily@trimegah.com)
Ariawan Anwar	Artha Graha, Jakarta	(ariawan.anwar@trimegah.com)
Ferry Zabur	Kelapa Gading, Jakarta	(ferry.zabur@trimegah.com)
Wirjawan Joesoef	Mangga Dua, Jakarta	(iwan@trimegah.com)
Lukman Abdul Azis	Kebon Jeruk, Jakarta	(lukman@trimegah.com)
Tutik Suciati	Semarang, Jawa Tengah	(tuty.s@trimegah.com)
Sonny Muljadi	Surabaya, Jawa Timur	(sonny.muljadi@trimegah.com)
Ni Luh Ketut Sri Agustini	Denpasar, Bali	(sri.agustini@trimegah.com)
Philip Fernando Suwandi	Makassar, Sulawesi Selatan	(philip.fs@trimegah.com)
agus.jatmiko	Balikpapan, Kalimantan Timur	(agus.jatmiko@trimegah.com)
Asep Saepudin	Bandung, Jawa Barat	(asep.saepudin@trimegah.com)
Asep Saepudin	Cirebon, Jawa Barat	(asep.saepudin@trimegah.com)
Very Wijaya	Medan, Sumatera Utara	(very.wijaya@trimegah.com)
Tantie Rivi Watie	Pekanbaru, Riau	(tantierw@trimegah.com)
Agus Bambang Suseno	Solo, Jawa Tengah	(agus.suseno@trimegah.com)
Agus Bambang Suseno	Yogyakarta, Jawa Tengah	(agus.suseno@trimegah.com)
Donny Kristanto Setiadi	Palembang, Sumatra Selatan	(donny.kristanto@trimegah.com)
Sonny Muljadi	Malang, Jawa Timur	(sonny.muljadi@trimegah.com)

PT Trimegah Securities Tbk
18th Fl, Artha Graha Building
Jl. Jend. Sudirman Kav. 52-53
Jakarta 12190, INDONESIA
Tel : (6221) 2924 9088 Fax : (6221) 2924 9163

DISCLAIMER

This report has been prepared by PT Trimegah Securities Tbk on behalf of itself and its affiliated companies and is provided for information purposes only. Under no circumstances is it to be used or considered as an offer to sell, or a solicitation of any offer to buy. This report has been produced independently and the forecasts, opinions and expectations contained herein are entirely those of Trimegah Securities.

While all reasonable care has been taken to ensure that information contained herein is not untrue or misleading at the time of publication, Trimegah Securities makes no representation as to its accuracy or completeness and it should not be relied upon as such. This report is provided solely for the information of clients of Trimegah Securities who are expected to make their own investment decisions without reliance on this report. Neither Trimegah Securities nor any officer or employee of Trimegah Securities accept any liability whatsoever for any direct or consequential loss arising from any use of this report or its contents. Trimegah Securities and/or persons connected with it may have acted upon or used the information herein contained, or the research or analysis on which it is based, before publication. Trimegah Securities may in future participate in an offering of the company's equity securities.