

IHSG

3.789,4

-7,7 -0,20%

Ulisan Pasar



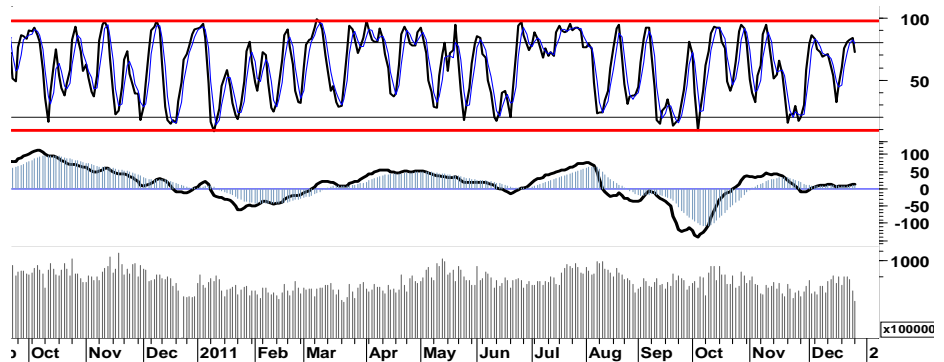
Aksi beli selektif sejumlah saham unggulan maupun favorit yang terjadi pada perdagangan kemarin, belum mampu mendorong IHSG untuk bertahan dalam area 3.800. Menjelang peralihan tahun, IHSG bergerak datar dan les. IHSG hanya mencatatkan pelemahan tipis sebesar -0,2% dan ditutup sedikit di atas area pivot support 3.783, atau di level 3.789 sebagai dampak negatif mengikuti pelemahan bursa-bursa utama di Asia.

Sementara perdagangan di bursa-bursa utama Eropa mencoba bertahan pada teritori positif, dimana DAX/CAC ditutup menguat masing-masing 0,2% dan 0,03%. Demikian pula aktifitas pada bursa-bursa utama di Amerika diwarnai oleh aksi akumulasi pembelian, DJI, S&P500 dan Nasdaq masing-masing menguat rata 0,3%.

Secara umum, IHSG berada dalam kondisi 'short-term strong bullish. Mencoba bertahan pada trend-support 3.775, disaat melemahnya kekuatan yang tercermin dari deadcrossing %K dengan %D pada stochastic (5d) dan volume

perdagangan yang mengalami penurunan selama 3 hari berturut-turut.

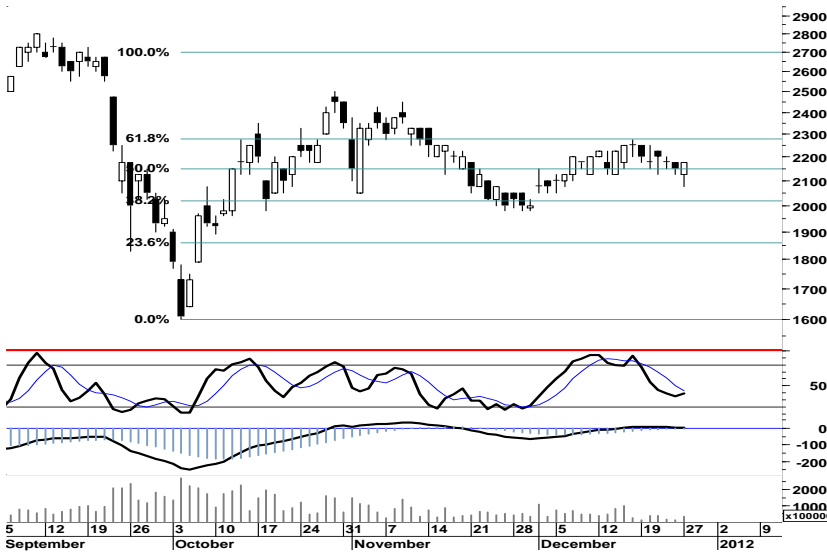
Pada perdagangan hari ini, kami perkirakan IHSG masih akan melewati swing harga serupa yaitu dalam rentang harga 3.750 - 3.810.



S1	S2	R1	R2
3,765	3,735	3,810	3,835

Saham Pilihan

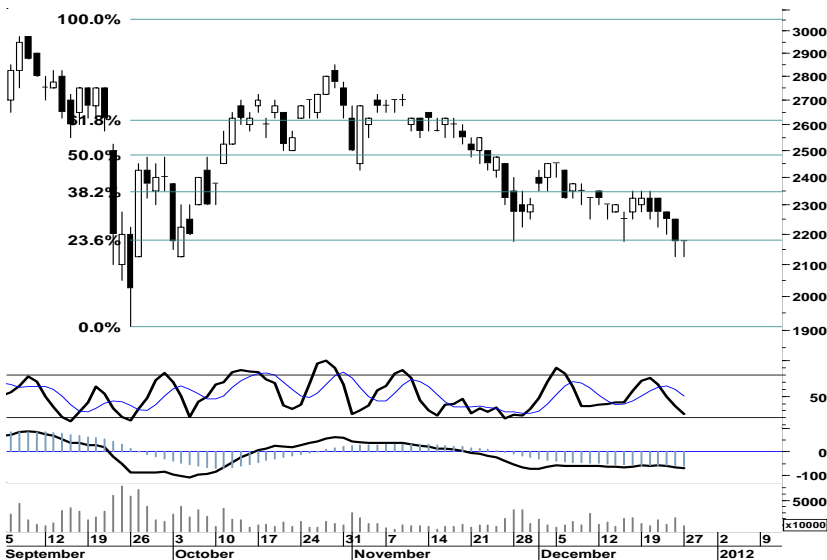
Saham	Harga (Rp)	Rekomendasi	Stochastic	RSI	BB Top	BB Bottom	S1	S2	R1	R2
BUMI	2,175	OverSold	38.89	50.45	2,225	2,150	2,125	2,050	2,250	2,325
CPIN	2,175	OverSold	25.00	32.62	2,325	2,125	2,150	2,125	2,225	2,250
GGRM	61,100	OverSold	29.73	46.81	62,800	60,750	60,600	60,100	62,700	63,200
JPFA	3,725	OverSold	14.58	18.27	4,050	3,625	3,700	3,650	3,850	3,900
JSMR	4,125	OverSold	31.58	56.43	4,225	4,075	4,100	4,050	4,200	4,250
KLBF	3,400	Trading	42.86	46.69	3,425	3,375	3,350	3,300	3,450	3,500

BUMI**2,175****OverSold**

Aksi beli yang terjadi menjelang akhir sesi perdagangan kemarin, memberikan peluang bagi BUMI untuk menguji resistensi selanjutnya di 2.250.

Indikasi golden cross pada stochastic (5d), merupakan momentum bagi BUMI untuk bergerak dalam rentang harga 2.150 - 2.250.

S1	S2	R1	R2
2,125	2,050	2,250	2,325

CPIN**2,175****OverSold**

Terbatasnya ruang tekanan pada stochastic (5d) serta support kuat 2.175, dapat memberikan ruang bagi CPIN untuk melakukan pembalikan arah menguji resistensi 2.225.

Dengan demikian, pada perdagangan hari ini CPIN berpotensi untuk bergerak dalam rentang harga 2.150 - 2.225.

S1	S2	R1	R2
2,150	2,125	2,225	2,250

GGRM**61,100****OverSold**

61,8% Fibonacci Retracement merupakan support yang akan menentukan arah bagi GGRM untuk kembali mencoba menutup celah harga tersisa di level 65,150.

Seiring terbatasnya ruang pelemahan pada stochastic (5d), GGRM memiliki peluang untuk bergerak dalam rentang harga 61.000 - 62.000.

S1	S2	R1	R2
60,600	60,100	62,700	63,200

JPFA

3,725

OverSold



Dalam kondisi oversold, JPFA harus mampu melakukan pembalikan arah dan menguji resistensi 3.900.

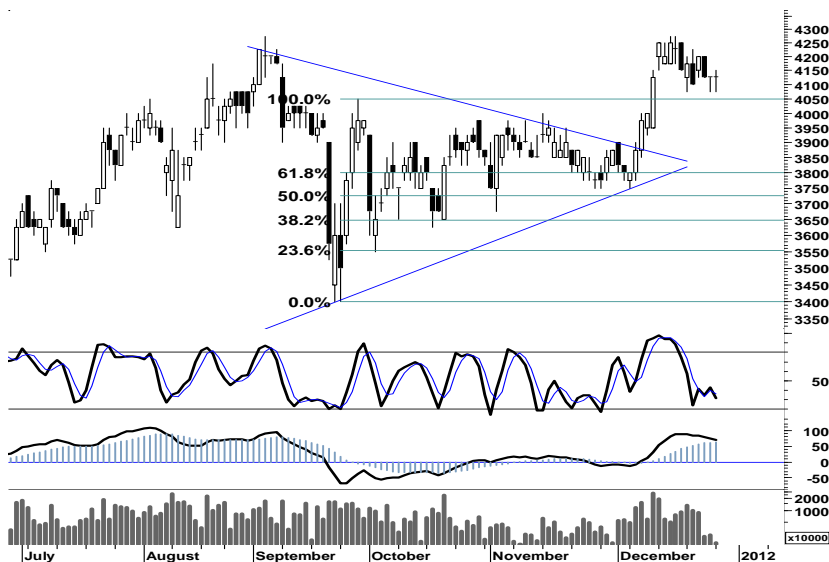
Dengan support 3.650 sebagai stop-loss level, JPFA diperkirakan masih akan mampu bertahan dalam rentang harga 3.700 - 3.800.

S1	S2	R1	R2
3,700	3,650	3,850	3,900

JSMR

4,125

OverSold



Secara umum JSMR berada dalam kondisi strong bullish dengan basis support harga pada level 4.050.

Setiap tekanan pelemahan menguji support tersebut, merupakan peluang bagi JSMR untuk akumulasi dengan target resistensi terdekat pada level 4.250.

S1	S2	R1	R2
4,100	4,050	4,200	4,250

KLBF

3,400

Trading



Indikasi golden cross pada stochastic (5d) merupakan peluang bagi KLBF untuk bergerak mix-positif menguji penetrasi resistensi 3.450.

Pada perdagangan hari ini, KLBF diperkirakan akan bergerak dalam teritori positif dengan rentang harga 3.350 - 3.500.

S1	S2	R1	R2
3,350	3,300	3,450	3,500

TRADE DATA

JCI (IHSG) 3,789.4 -7.7 -0.20%

YTD (Rp)	2.3%	Volume (m) :	4,567
YTD (USD)	1.3%	Nilai (Rpbn) :	3,328
Moving Avg 20day	3,765	Mkt Cap (Rptr) :	3,439
Moving Avg 50day	3,750	Market P/E (x) :	16.2
Moving Avg 200day	3,776	Market Div. Yield (%) :	2.4

Indonesia & Sectors +/- (%) YTD (%)

MSCI Indonesia	4,750.5	-1.3	-0.03	4.49
JII	532.6	-0.2	-0.04	-0.06
LQ45	670.0	-1.4	-0.20	1.31
JAKFIN Index	492.6	-3.6	-0.01	5.55
JAKINFR Index	698.1	1.3	0.00	-14.79
JAKMINE Index	2,511.0	7.0	0.00	-23.31
JAKCONS Index	1,292.1	-14.9	-0.01	18.04
JAKTRAD Index	567.0	2.0	0.00	19.60
JAKMIND Index	1,306.4	3.0	0.00	35.10
JAKBIND Index	400.1	0.0	0.00	3.31
JAKPROP Index	225.4	-0.8	-0.00	10.97
JAKAGRI Index	2,156.1	13.2	0.01	-5.61

Commodities +/- (%) YTD (%)

CRB Index	308.27	2.2	0.72	-7.37
Oil & Gas				
Crude Oil	101.34	1.7	1.67	10.90
Natural Gas	3.11	-0.0	-0.06	-29.35
COAL (Rotterdam)	117.40	0.0	0.00	-10.65
COAL (Amsterdam)	112.06	0.0	0.00	-11.03
COAL (Australia,wk)	108.95	0.0	0.00	-10.99
Industrial Metals				
Alumunium	1,998.00	0.0	0.00	-18.76
Nickel	18,505	0	0.00	-25.23
Tin	19,300	0	0.00	-28.25
Precious Metal				
Gold	1,595.50	-10.5	-0.65	12.25
Silver	28.70	-0.3	-1.19	-7.16
Soft Commodities				
CPO (Malaysia)	3,157.00	-13.0	-0.41	-17.23
CPO (Netherland)	1,030.00	10.0	0.98	-19.84
Rubber	3,247.30	-48.4	-1.47	-34.97
Corn	633.25	13.8	2.22	0.68
Wheat	644.75	22.8	3.66	-18.82
Soybeans	1,199.75	36.8	3.16	-13.92
Rice (Indonesia)	8,100.00	100.0	1.25	14.08

Winners

Stock	Price	(%)	Stock	Price	(%)
EMTK	3,275	9.17	BNLI	1,350	-4.26
SMAR	6,900	2.99	GEMS	2,625	-3.67
ISAT	5,350	1.90	BTPN	3,150	-3.08
SMGR	10,950	1.86	UNVR	18,300	-2.40
INCO	3,100	1.64	BBNI	3,850	-1.91
BUMI	2,175	1.16	GGRM	61,100	-1.13
BYAN	17,950	1.13	INTP	17,050	-0.87
TLKM	7,200	0.70	PGAS	3,200	-0.78
UNTR	25,050	0.60	BMRI	6,750	-0.74
ASII	74,000	0.41	BBCA	8,000	-0.62

Losers

Stock	Price	(%)	Stock	Price	(%)
BNLI	1,350	-4.26	BUMI	2,175	-1.13
GEMS	2,625	-3.67	UNVR	18,300	-2.40
BTPN	3,150	-3.08	BBNI	3,850	-1.91
UNVR	18,300	-2.40	GGRM	61,100	-1.13
BBNI	3,850	-1.91	INTP	17,050	-0.87
GGRM	61,100	-1.13	PGAS	3,200	-0.78
INTP	17,050	-0.87	BMRI	6,750	-0.74
PGAS	3,200	-0.78	BBCA	8,000	-0.62
BMRI	6,750	-0.74			
BBCA	8,000	-0.62			

Regional Indices +/- (%) YTD (%)

MXWO	MSCI Word	1,183.6	0.7	0.06	-7.54
SPX	S&P 500	1,265.4	0.1	0.01	0.62
US					
Dow Jones Industrial		12,291.4	-2.6	-0.02	6.17
Nasdaq	US	2,625.2	6.6	0.25	-1.04
Europe					
EURO 50	Europe	241.9	0.0	0.02	-12.29
FTSE	London	5,512.7	0.0	0.00	-6.56
DAX	Jerman	5,889.8	10.8	0.18	-14.82
CAC	France	3,103.1	1.0	0.03	-18.44
SMI	Swiss	5,886.9	-7.0	-0.12	-8.53
BRIC					
BOVESPA	Brazil	58,005.2	335.7	0.58	-16.30
MICEX	Russia	1,386.1	-3.9	-0.28	-17.88
SENSEX	India	15,874.0	-96.8	-0.61	-22.60
NIFTY	India	4,750.5	-28.5	-0.60	-22.56
SHCOMP	China	2,166.2	-23.9	-1.09	-22.86
SZCOMP	China	854.0	-22.9	-2.61	-33.85

Developed ASIA

Nikkei	Japan	8,440.6	-38.8	-0.46	-17.48
TPX	Japan	724.3	-2.2	-0.30	-19.42
HIS	Hong kong	18,629.2	0.0	0.00	-19.13
KOSPI	S.Korea	1,842.0	-14.7	-0.79	-10.19
TAIEX	Taiwan	7,085.0	-7.6	-0.11	-21.04
FSSTI	Singapore	2,673.6	-2.8	-0.11	-16.19

ASEAN

SET	Thailand	1,028.4	-4.1	-0.40	-0.42
PCOMP	Philippines	4,361.4	-25.6	-0.58	3.82
KLCI	Malaysia	1,500.9	4.8	0.32	-1.19
VNINDEX	Vietnam	347.8	-4.9	-1.38	-28.24

Currency +/- (%) YTD (%)

EURUSD	Euro	1.307	0.001	0.08	-2.34
GBPUSD	United Kingdom	1.567	0.004	0.26	0.38
USDCHF	Switzerland	0.934	-0.002	-0.20	-0.13
USDCAD	Canada	1.019	-0.001	-0.10	2.06
AUDUSD	Australia	1.016	-0.001	-0.12	-0.74
NZDUSD	New Zealand	0.773	-0.002	-0.23	-0.96
USDJPY	Japan	77.9	-0.100	-0.13	-3.99
USDCNY	China	6.322	0.002	0.04	-4.32
USDHKD	Hongkong	7.777	-0.001	-0.01	0.05
USDSGD	Singapore	1.296	0.004	0.28	0.95
Rupiah	Indonesia	9,075.0	20.000	0.22	0.88

Value

Value	(Rpbn)	Volume	(Lot)	Freq	(x)
BBRI	67,721	ENRG	339,541	IGAR	2,251
BUMI	67,345	INAF	184,232	INAF	2,175
PTBA	59,516	BNBR	141,314	DART	2,065
ASII	50,357	LPKR	140,193	TMPI	1,793
BMRI	49,000	BIPI	129,987	AISA	1,714
LPKR	46,267	BKSL	124,909	MNCN	1,519
BBNI	39,963	DEWA	115,613	ENRG	1,450
BBCA	34,061	ELTY	94,854	DEWA	1,381
INDF	33,441	DART	67,093	DILD	1,304
AKRA	29,930	BUMI	63,323	BUMI	1,178

Code	Last	Ytd Chg(%)	H-5 Chg (%)	Rekomendasi	STO	RSI	MACD	Bollinger Band		Support			Resistance			H-5	
								Top	Bottom	1	2	3	1	2	3	Highest	Lowest
AALI	21,500	-19.78	4.37	StrongSell	82.0	52.8	(112.6)	21,750	20,800	21,300	21,050	20,950	21,650	21,750	22,000	21,500	20,550
ACES	4,000	40.35	5.26	StrongSell	88.5	63.0	67.2	4,075	3,850	4,000	3,975	3,975	4,025	4,025	4,050	4,000	3,750
ADRO	1,780	-33.46	-0.56	Trading	46.2	37.4	(53.6)	1,810	1,740	1,770	1,750	1,740	1,800	1,810	1,830	1,820	1,730
AISA	500	-35.90	-3.85	Trading	50.0	35.2	(27.4)	535	471	487	474	462	512	524	537	560	440
ANTM	1,610	-34.95	0.63	Trading	58.3	42.1	(16.2)	1,630	1,600	1,600	1,580	1,570	1,630	1,640	1,660	1,630	1,590
ASII	74,000	36.03	2.56	StrongSell	88.5	58.6	849.4	75,200	71,950	72,900	71,800	71,000	74,800	75,600	76,700	74,500	70,700
ASRI	460	50.82	1.10	Trading	42.9	54.9	5.6	471	456	455	450	445	465	470	475	475	450
BBCA	8,000	24.03	0.63	Trading	50.0	52.9	15.1	8,100	7,900	7,950	7,850	7,800	8,100	8,150	8,250	8,050	7,900
BBNI	3,850	1.32	-0.65	OverSold	33.3	48.7	1.3	3,950	3,825	3,825	3,775	3,725	3,925	3,975	4,025	3,975	3,825
BBRI	6,850	32.37	0.74	Trading	47.8	56.0	50.1	7,000	6,800	6,800	6,750	6,700	6,900	6,950	7,000	7,050	6,650
BDMN	4,175	-24.09	-0.60	Trading	41.2	34.1	(113.6)	4,225	4,150	4,125	4,075	4,025	4,225	4,275	4,325	4,250	4,100
BISI	910	-51.34	2.25	OverBought	70.6	49.3	(3.3)	940	900	900	890	880	920	930	940	940	880
BKSL	250	131.48	-3.85	Trading	46.7	43.0	(2.6)	256	243	245	240	235	255	260	265	260	235
BMRI	6,750	4.65	-0.74	Trading	44.0	51.9	(2.8)	6,900	6,700	6,700	6,650	6,600	6,800	6,850	6,900	7,000	6,600
BSDE	970	10.23	-3.00	Trading	43.8	56.0	15.8	1,000	960	960	950	940	980	990	1,000	1,010	960
BTEL	250	6.38	0.00	OverBought	70.0	39.5	(5.5)	257	245	245	240	235	255	260	265	255	240
BUMI	2,175	-30.40	-1.14	OverSold	38.9	50.5	2.8	2,225	2,150	2,125	2,050	2,025	2,225	2,250	2,325	2,250	2,075
BWPT	1,130	-13.74	-1.74	Trading	54.5	42.0	(13.3)	1,160	1,110	1,120	1,110	1,090	1,150	1,170	1,180	1,170	1,090
CPIN	2,175	21.51	-6.45	OverSold	25.0	32.6	(73.1)	2,325	2,125	2,150	2,125	2,100	2,200	2,225	2,250	2,350	2,125
ELTY	121	-24.84	0.00	OverSold	30.0	60.5	3.1	124	121	120	119	117	123	125	126	126	120
EXCL	4,500	-14.29	4.65	StrongSell	81.4	46.2	(118.8)	4,650	4,200	4,475	4,425	4,400	4,550	4,575	4,625	4,550	4,150
GGRM	61,100	48.84	-1.77	OverSold	29.7	46.8	73.1	62,800	60,750	60,600	60,100	59,300	61,900	62,700	63,200	63,550	60,850
HEXA	8,700	20.00	0.00	Trading	53.8	64.0	123.9	8,800	8,650	8,700	8,700	8,650	8,750	8,800	8,800	8,850	8,600
HRUM	6,750	-28.57	0.00	Trading	54.5	38.5	(208.0)	6,950	6,650	6,700	6,600	6,500	6,900	7,000	7,100	6,950	6,600
INCO	3,100	-37.69	1.64	OverBought	71.4	48.2	(51.5)	3,125	3,000	3,050	3,000	2,950	3,150	3,200	3,250	3,125	2,975
INDF	4,700	-5.05	2.73	StrongSell	91.3	43.8	(74.5)	4,825	4,550	4,650	4,600	4,550	4,750	4,800	4,850	4,750	4,525
INDY	2,175	-57.35	3.57	StrongSell	87.5	47.3	(48.8)	2,275	2,050	2,150	2,100	2,075	2,225	2,250	2,300	2,200	2,050
INTP	17,050	6.23	5.57	StrongSell	87.9	65.3	446.0	17,700	16,400	16,900	16,750	16,650	17,150	17,250	17,400	17,300	16,150
ISAT	5,350	-1.83	0.00	OverSold	38.1	50.4	14.3	5,500	5,250	5,250	5,100	5,050	5,450	5,500	5,650	5,550	5,150
ITMG	38,000	-30.02	1.74	OverBought	73.5	44.9	(828.7)	39,100	37,250	37,650	37,300	37,000	38,300	38,600	38,950	38,950	36,850
JPFA	3,725	17.32	-6.88	OverSold	14.6	18.3	(192.8)	4,050	3,625	3,700	3,650	3,600	3,800	3,850	3,900	4,100	3,700
JSMR	4,125	16.20	-1.20	OverSold	31.6	56.4	67.6	4,225	4,075	4,100	4,050	4,025	4,175	4,200	4,250	4,225	4,075
KLBF	3,400	2.26	0.74	Trading	42.9	46.7	(22.5)	3,425	3,375	3,350	3,300	3,275	3,425	3,450	3,500	3,450	3,325
LSIP	2,225	-12.40	3.49	OverBought	71.4	50.3	(14.8)	2,325	2,150	2,200	2,175	2,125	2,275	2,325	2,350	2,300	2,100
MAIN	950	-69.35	2.15	OverBought	66.7	51.9	(5.9)	965	925	940	930	920	960	970	980	960	910
MAPI	5,050	81.98	-0.98	OverSold	37.1	46.2	(29.3)	5,250	5,000	5,000	4,950	4,900	5,100	5,150	5,200	5,300	4,975
MBAI	11,850	-24.52	-0.42	StrongBuy	11.1	37.7	(186.1)	11,850	11,850	11,850	11,850	11,850	11,850	11,850	11,850	11,900	11,800
PGAS	3,200	-28.49	2.40	OverBought	77.8	59.2	39.9	3,275	3,175	3,175	3,125	3,100	3,250	3,275	3,325	3,250	3,100
PTBA	17,350	-27.56	5.15	StrongSell	95.2	56.0	(111.6)	17,800	16,400	17,150	16,950	16,800	17,500	17,650	17,850	17,400	16,200
RALS	680	-96.74	0.00	Trading	58.8	58.8	23.7	755	655	670	655	640	700	715	730	750	650
SGRO	2,950	-9.23	0.85	Trading	58.8	45.9	(7.3)	3,050	2,950	2,925	2,900	2,875	2,975	3,000	3,025	3,050	2,900
SIPD	52	-29.73	0.00	Trading	55.6	39.8	(0.9)	54	52	51	50	49	53	54	55	53	51
SMCB	2,100	-5.62	-3.45	OverSold	33.3	54.9	63.1	2,225	2,075	2,050	2,000	1,950	2,150	2,200	2,250	2,225	2,050
SMGR	10,950	11.17	0.92	TakeProfit	63.2	64.9	425.6	11,250	10,600	10,750	10,500	10,400	11,100	11,200	11,450	11,300	10,500
SMRA	1,190	10.19	4.39	Trading	56.7	56.3	26.1	1,240	1,180	1,180	1,160	1,150	1,210	1,220	1,240	1,250	1,140
SSIA	710	-21.11	4.41	StrongSell	89.7	81.8	77.2	740	675	700	685	670	730	745	760	730	610
TINS	1,660	-41.75	-1.19	Accumulate	29.4	34.2	(36.2)	1,690	1,650	1,650	1,640	1,630	1,670	1,680	1,690	1,700	1,650
TLKM	7,200	-10.00	2.13	StrongSell	88.9	48.5	(64.5)	7,300	7,050	7,150	7,100	7,050	7,250	7,300	7,350	7,200	6,900
UNTR	25,050	3.09	-0.60	Trading	59.3	51.6	64.0	25,550	24,700	24,850	24,650	24,500	25,200	25,350	25,550	25,450	24,750
UNVR	18,300	14.02	0.00	OverBought	67.1	58.7	381.2	19,050	17,900	17,950	17,600	17,100	18,800	19,300	19,650	19,000	17,750

S1 = Support 1 S2 = Support 2 S3 = Support 3
 R1 = Resisten 1 R2 = Resisten 2 R2 = Resisten 2
 STO = Stochastic Oscillator
 RSI = Relative Strength Index
 MACD = Moving Average Convergence Divergence
 H-5 = 5 hari sebelumnya

RESEARCH TEAM

Michele Gabriela	Equity Analyst	(michele.gabriela@trimegah.com)
T Heldy Arifien	Technical Analyst	(heldy@trimegah.com)
Rovandi	Research Assistant	(rovandi@trimegah.com)

EQUITY CAPITAL MARKET TEAM

Nathanael Benny Prasetyo	Head of Retail ECM	(benny.prasetyo@trimegah.com)
Windra Djulnaily	Pluit, Jakarta	(windra.djulnaily@trimegah.com)
Ariawan Anwar	Artha Graha, Jakarta	(ariawan.anwar@trimegah.com)
Ferry Zabur	Kelapa Gading, Jakarta	(ferry.zabur@trimegah.com)
Wirjawan Joesoef	Mangga Dua, Jakarta	(iwan@trimegah.com)
Very Wijaya	Kebon Jeruk, Jakarta	(very.wijaya@trimegah.com)
Untung Wijaya	Semarang, Jawa Tengah	(untung.wijaya@trimegah.com)
Sonny Muljadi	Surabaya, Jawa Timur	(sonny.muljadi@trimegah.com)
Ni Made Dwi Hapsari Wijayanti	Denpasar, Bali	(dwihapsari.wijayanti@trimegah.com)
Philip Fernando Suwandi	Makassar, Sulawesi Selatan	(philip.fs@trimegah.com)
Agus Jatmiko	Balikpapan, Kalimantan Timur	(agus.jatmiko@trimegah.com)
Asep Saepudin	Bandung, Jawa Barat	(asep.saepudin@trimegah.com)
Ariffianto	Cirebon, Jawa Barat	(ariffianto@trimegah.com)
Juliana Effendy	Medan, Sumatera Utara	(juliana.effendi@trimegah.com)
Tantie Rivi Watie	Pekanbaru, Riau	(tantierw@trimegah.com)
Agus Bambang Suseno	Solo, Jawa Tengah	(agus.suseno@trimegah.com)
Untung Wijaya	Yogyakarta, Jawa Tengah	(untung.wijaya@trimegah.com)
Donny Kristanto Setiadi	Palembang, Sumatra Selatan	(donny.kristanto@trimegah.com)
Rr. Putri Ayu Erikusuma	Malang, Jawa Timur	(putri.ayu@trimegah.com)

PT Trimegah Securities Tbk
18th Fl, Artha Graha Building
Jl. Jend. Sudirman Kav. 52-53
Jakarta 12190, INDONESIA
Tel : (6221) 2924 9088 Fax : (6221) 2924 9163

DISCLAIMER

This report has been prepared by PT Trimegah Securities Tbk on behalf of itself and its affiliated companies and is provided for information purposes only. Under no circumstances is it to be used or considered as an offer to sell, or a solicitation of any offer to buy. This report has been produced independently and the forecasts, opinions and expectations contained herein are entirely those of Trimegah Securities.

While all reasonable care has been taken to ensure that information contained herein is not untrue or misleading at the time of publication, Trimegah Securities makes no representation as to its accuracy or completeness and it should not be relied upon as such. This report is provided solely for the information of clients of Trimegah Securities who are expected to make their own investment decisions without reliance on this report. Neither Trimegah Securities nor any officer or employee of Trimegah Securities accept any liability whatsoever for any direct or consequential loss arising from any use of this report or its contents. Trimegah Securities and/or persons connected with it may have acted upon or used the information herein contained, or the research or analysis on which it is based, before publication. Trimegah Securities may in future participate in an offering of the company's equity securities.