

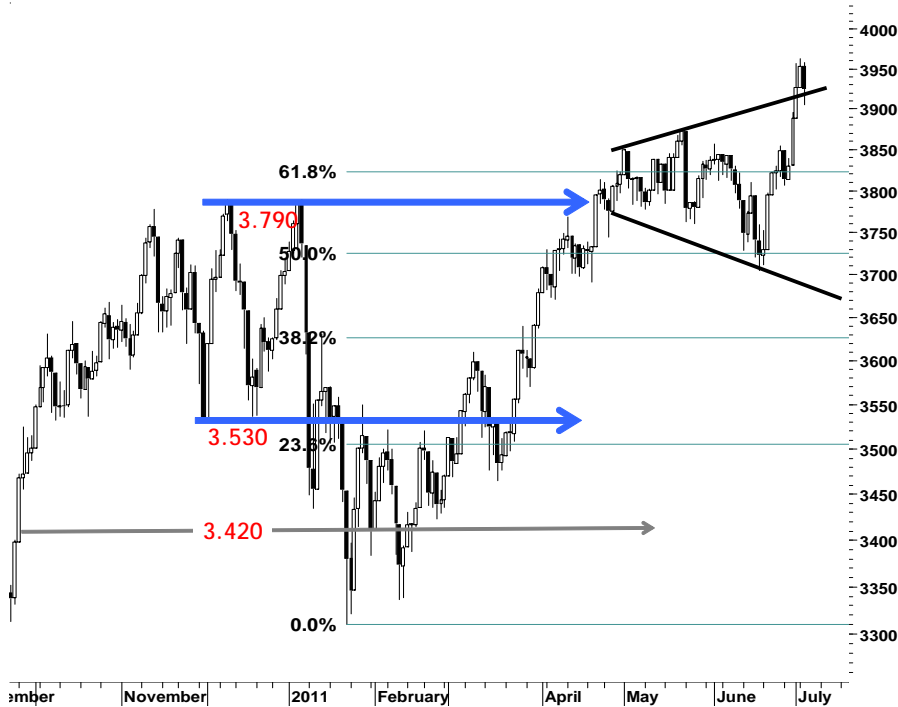
IHSG

3.924,1

-29,4

-0,74%

Ulasan Pasar



IHSG pada perdagangan kemarin mengakhiri rally penguatannya seiring derasnya aksi profit taking pada sejumlah saham unggulan, yang selama tiga hari berturut-turut mengalami kenaikan harga cukup tinggi dan mendorong penguatan IHSG menciptakan rekor harga tertinggi 3.962.

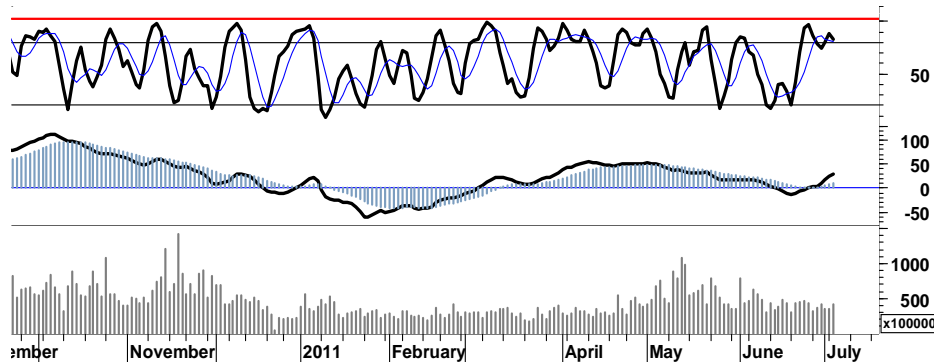
Setelah sepekan mencoba menguat pada area overbought stochastic, tekanan jual terhadap saham-saham papan utama pada perdagangan hari Selasa kemarin mengakibatkan IHSG terpankas 0,7% dan terpuruk di level 3.924 dengan total transaksi sebanyak 108rb kejadian ditengah aksi para pelaku asing yang justru masih mencatatkan pembelian bersih senilai Rp80miliar.

Dalam posisi berimbang, dimana penutupan perdagangan yang berakhir dalam area pivot support harga, signal positif serta arus distribusi yang merambah zona hijau diharapkan mampu menjadi salah satu katalis bagi IHSG

untuk mencoba bertahan pada area 3.900 ditengah bayang-bayang berlanjutnya aksi jual hari ini.

Dengan tetap mewaspadaai probabilita tekanan jual yang akan menyeret IHSG menguji support 3.850 kembali apabila IHSG gagal bergerak di atas support 3.920, kami perkirakan IHSG akan mencoba bergerak dalam rentang harga 3.890 - 3.935

S1	S2	R1	R2
3,900	3,880	3,955	3,980



Saham Pilihan

Saham	Harga (Rp)	Rekomendasi	Stochastic	RSI	BB Top	BB Bottom	S1	S2	R1	R2
AALI	23,250	Trading	47.27	51.80	23,650	22,950	22,900	22,550	23,750	24,100
BISI	1,250	Trading Buy	4.55	26.05	1,320	1,240	1,240	1,220	1,300	1,320
HEXA	7,700	StrongSell	90.16	77.99	8,150	6,550	7,400	7,100	8,100	8,400
ITMG	44,950	OverSold	25.26	42.13	45,200	44,700	44,650	44,300	45,500	45,850
SGRO	3,350	Trading Buy	25.00	45.85	3,450	3,300	3,325	3,300	3,400	3,425
UNVR	14,800	OverSold	35.48	44.03	15,050	14,800	14,650	14,500	15,200	15,350



Dengan menetapkan stop-loss pada level 22.500, arus distribusi yang perlahan mulai merambah zona hijau diharapkan mampu menahan laju tekanan pada support 22.900.

S1	S2	R1	R2
22,900	22,550	23,750	24,100



Penyempitan ruang tekanan, merupakan momentum yang dapat dimanfaatkan oleh BISI untuk kembali dalam area konsolidasi positif.

Setidaknya indikasi signal positif golden cross, membuka peluang BISI untuk bergerak dalam area 1.250 - 1.320.

S1	S2	R1	R2
1,240	1,220	1,300	1,320



Berada dalam zona overbought serta menyempitnya ruang penguatan, pada perdagangan hari ini HEXA akan mencoba bergerak dalam support area 7.100-7.400 dibayangi aksi profit taking dan tekanan jual.

S1	S2	R1	R2
7,400	7,100	8,100	8,400

ITMG

44,950

OverSold



Berdasarkan indikasi signal positif leading indicator, diharapkan ITMG mampu bertahan dalam area konsolidasi 44.300 - 45.500.

S1	S2	R1	R2
44,650	44,300	45,500	45,850

SGRO

3,350

Trading Buy



Waspada! potensi tekanan menguji support 3.150, apabila SGRO gagal bertahan pada support harga 3.300.

Pada perdagangan hari ini diharapkan SGRO dapat bergerak dalam rentang harga 3.325-3.425.

S1	S2	R1	R2
3,325	3,300	3,400	3,425

UNVR

14,800

OverSold



Ditengah rawanya tekanan jual, indikasi golden cross stochastic diharapkan mampu mempertahankan posisi UNVR pada zona hijau serta bergerak positif dengan basis support 14.650.

Pada perdagangan hari ini UNVR berpeluang gerak dalam rentang harga 14.500 - 15.200.

S1	S2	R1	R2
14,650	14,500	15,200	15,350

TRADE DATA

JCI (IHSG) 3,924.1 -29.4 -0.74%

YTD (Rp)	6.0%	Volume (m) :	5,055
YTD (USD)	11.5%	Nilai (Rpbn) :	3,328
Moving Avg 20day	3,820	Mkt Cap (Rpbn) :	3,439
Moving Avg 50day	3,818	Market P/E (x) :	16.2
Moving Avg 200day	3,641	Market Div. Yield (%) :	2.4

Indonesia & Sectors +/- (%) YTD (%)

MSCI Indonesia	4,884.6	-54.9	-1.11	7.44
JII	541.9	-6.5	-1.19	1.69
LQ45	696.9	-7.3	-1.04	5.37
JAKFIN Index	513.6	-4.1	-0.01	10.06
JAKINFR Index	767.1	-4.2	-0.01	-6.36
JAKMINE Index	3,277.2	-16.3	-0.00	0.09
JAKCONS Index	1,189.0	-7.4	-0.01	8.62
JAKTRAD Index	534.2	2.1	0.00	12.68
JAKMIND Index	1,192.8	-36.2	-0.03	23.35
JAKBIND Index	405.0	-1.5	-0.00	4.58
JAKPROP Index	208.6	-0.8	-0.00	2.69
JAKAGRI Index	2,316.3	-10.0	-0.00	1.40

Commodities +/- (%) YTD (%)

CRB Index	341.63	4.9	1.46	2.65
Oil & Gas				
Crude Oil	96.89	2.0	2.05	6.03
Natural Gas	4.36	0.1	1.21	-0.95
COAL (Rotterdam)	125.15	1.9	1.50	-4.76
COAL (Amsterdam)	125.30	-0.5	-0.36	-0.52
COAL (Australia,wk)	120.40	0.0	0.00	-1.63
Industrial Metals				
Aluminium	2,560.75	63.8	2.55	4.13
Nickel	23,300	125	0.54	-5.86
Tin	26,350	700	2.73	-2.04
Precious Metal				
Gold	1,512.70	30.1	2.03	6.42
Silver	35.41	1.7	5.06	14.56
Soft Commodities				
CPO (Malaysia)	3,050.00	-11.0	-0.36	-20.03
CPO (Netherlands)	1,067.50	0.0	0.00	-16.93
Rubber	4,779.82	3.8	0.08	-4.29
Corn	625.50	18.8	3.09	-0.56
Wheat	635.50	23.3	3.80	-19.99
Soybeans	1,322.25	9.5	0.72	-5.13
Rice (Indonesia)	6,950.00	0.0	0.00	-2.11

Winners

Stock	Price	(%)	Stock	Price	(%)
TFCO	660	11.86	INDF	5,800	-3.33
TSPC	2,450	11.36	ASII	66,300	-3.21
TRIO	970	7.78	BBRI	6,700	-2.90
HEXA	7,700	6.21	ICBP	5,600	-2.61
CPIN	2,125	4.94	PTBA	20,950	-1.87
EMTK	1,910	2.69	SMGR	9,700	-1.52
ADMF	14,000	2.56	INTP	16,750	-1.47
TINS	2,550	2.00	UNVR	14,800	-1.33
KLBF	3,625	1.40	TLKM	7,200	-0.69
EXCL	6,000	0.84	BBCA	7,850	-0.63

Losers

Stock	Price	(%)	Stock	Price	(%)
INDF	5,800	-3.33	ASII	66,300	-3.21
ASII	66,300	-3.21	BBRI	6,700	-2.90
BBRI	6,700	-2.90	ICBP	5,600	-2.61
ICBP	5,600	-2.61	PTBA	20,950	-1.87
PTBA	20,950	-1.87	SMGR	9,700	-1.52
SMGR	9,700	-1.52	INTP	16,750	-1.47
INTP	16,750	-1.47	UNVR	14,800	-1.33
UNVR	14,800	-1.33	TLKM	7,200	-0.69
TLKM	7,200	-0.69	BBCA	7,850	-0.63
BBCA	7,850	-0.63			

Regional Indices +/- (%) YTD (%)

MXWO	MSCI World	1,345.9	-2.3	-0.17	5.15
SPX	S&P 500	1,337.9	-1.8	-0.13	6.38
US					
Dow Jones Industrial		12,569.9	-12.9	-0.10	8.57
Nasdaq	US	2,825.8	9.7	0.35	6.52
Europe					
EURO 50	Europe	275.6	0.1	0.03	-0.07
FTSE	London	6,024.0	6.5	0.11	2.10
DAX	Germany	7,439.4	-3.5	-0.05	7.60
CAC	France	3,978.8	-24.3	-0.61	4.57
SMI	Swiss	6,243.0	-2.8	-0.04	-3.00
BRIC					
BOVESPA	Brazil	63,038.8	-852.5	-1.33	-9.04
MICEX	Russia	1,710.0	3.9	0.23	1.30
SENSEX	India	18,744.6	-69.9	-0.37	-8.60
NIFTY	India	5,632.1	-18.4	-0.33	-8.19
SHCOMP	China	2,816.4	3.5	0.13	0.29
SZCOMP	China	1,195.8	6.9	0.58	-7.36

Developed ASIA

Nikkei	Japan	9,972.5	7.4	0.07	-2.51
TPX	Japan	865.2	1.1	0.12	-3.74
HIS	Hong kong	22,748.0	-22.5	-0.10	-1.25
KOSPI	S. Korea	2,161.8	16.4	0.77	5.40
TAIEX	Taiwan	8,784.4	9.7	0.11	-2.10
FSSTI	Singapore	3,129.7	-23.8	-0.75	-1.89

ASEAN

SET	Thailand	1,084.6	-5.7	-0.52	5.02
PCOMP	Philippines	4,439.6	18.0	0.41	5.68
KLCI	Malaysia	1,581.9	-0.5	-0.03	4.14
VNINDEX	Vietnam	431.0	5.6	1.32	-11.07

Currency +/- (%) YTD (%)

EURUSD	Euro	1.443	-0.007	-0.50	7.81
GBPUSD	United Kingdom	1.606	-0.002	-0.14	2.88
USDCHF	Switzerland	0.841	-0.007	-0.88	-10.13
USDCAD	Canada	0.963	0.002	0.24	-3.47
AUDUSD	Australia	1.069	-0.004	-0.38	4.50
NZDUSD	New Zealand	0.825	-0.005	-0.54	5.75
USDJPY	Japan	81.1	0.270	0.33	-0.06
USDCNY	China	6.468	0.005	0.08	-2.10
USDHKD	Hongkong	7.781	-0.000	-0.00	0.10
USDSGD	Singapore	1.228	0.002	0.16	-4.34
Rupiah	Indonesia	8,533.0	9.000	0.11	-5.15

Value (Rpbn) Volume (Lot) Freq (x)

KLBF	263,378	KIJA	1,418,020	LCGP	4,254
BUMI	252,389	BNBR	677,688	KIJA	4,005
ASII	170,526	BKSL	488,189	COWL	3,868
BBRI	145,668	ENRG	303,522	BUMI	3,135
BMRI	144,976	COWL	297,282	KLBF	3,027
TLKM	104,391	ELTY	294,619	CPIN	2,519
KIJA	102,842	DEWA	265,896	IGAR	2,215
BBCA	96,021	LCGP	177,574	BKDP	1,947
CPIN	93,825	BUMI	168,016	BBRI	1,741
ADRO	87,462	KLBF	145,959	BHIT	1,601

Code	Last	Ytd Chg(%)	H-5 Chg (%)	Rekomendasi	STO	RSI	MACD	Bollinger Band		Support			Resistance			H-5	
								Top	Bottom	1	2	3	1	2	3	Highest	Lowest
AALI	23,250	-13.25	1.31	Trading	47.3	51.8	(17.8)	23,650	22,950	22,900	22,550	22,300	23,500	23,750	24,100	23,750	22,800
ACES	3,000	5.26	0.00	OverBought	66.7	60.0	63.0	3,025	3,000	3,000	3,000	3,000	3,000	3,000	3,000	3,100	2,800
ADRO	2,500	-6.54	5.26	Trading Sell	82.6	63.4	31.1	2,600	2,425	2,500	2,475	2,450	2,550	2,575	2,600	2,550	2,350
AKRA	2,125	25.00	-2.30	Trading	50.0	73.8	103.0	2,175	2,125	2,100	2,075	2,050	2,150	2,175	2,200	2,200	2,100
ANTM	2,125	-14.14	2.41	OverBought	72.7	51.7	(13.9)	2,150	2,075	2,100	2,075	2,050	2,150	2,175	2,200	2,150	2,050
ASII	66,300	21.88	8.60	Trading Sell	83.0	68.7	1,852.1	70,850	61,350	65,550	64,800	63,550	67,550	68,800	69,550	68,500	60,500
BBCA	7,850	21.71	5.37	Trading Sell	85.7	73.2	152.5	8,150	7,500	7,800	7,700	7,650	7,950	8,000	8,100	7,950	7,350
BBNI	3,875	1.97	3.33	OverBought	77.4	56.3	5.8	3,975	3,800	3,825	3,775	3,725	3,925	3,975	4,025	3,950	3,650
BBRI	6,700	29.47	4.69	Trading Sell	80.6	59.9	87.7	7,100	6,400	6,600	6,500	6,300	6,900	7,100	7,200	6,950	6,350
BBTN	1,740	4.19	4.19	Trading Sell	78.8	62.7	18.9	1,790	1,680	1,730	1,720	1,700	1,760	1,780	1,790	1,780	1,670
BDMN	5,950	8.18	0.00	Trading	55.6	46.5	(16.2)	6,150	5,900	5,900	5,800	5,750	6,050	6,100	6,200	6,150	5,850
BISI	1,250	-33.16	-3.85	Trading Buy	4.5	26.1	(68.4)	1,320	1,240	1,240	1,220	1,200	1,280	1,300	1,320	1,340	1,240
BMRI	7,200	11.63	2.13	OverBought	72.7	57.2	34.4	7,400	7,050	7,150	7,100	7,000	7,300	7,400	7,450	7,350	7,000
BSDE	870	-1.14	-1.14	Trading	46.7	43.9	(3.3)	915	870	855	840	815	895	920	935	920	860
BTEL	360	53.19	-1.37	Trading	45.5	45.6	(2.0)	366	357	354	347	344	364	367	374	370	350
BUMI	2,975	-4.80	-1.65	Trading Buy	33.3	35.5	(105.2)	3,025	2,950	2,950	2,900	2,850	3,050	3,100	3,150	3,075	2,925
CTRA	445	27.14	8.54	Trading Sell	94.1	62.7	4.5	458	415	439	432	429	449	452	459	445	410
ELTY	150	-6.83	0.67	Trading	47.1	48.6	(2.0)	151	148	148	145	143	153	155	158	152	147
EXCL	6,000	14.29	2.56	Trading	44.8	43.5	(57.4)	6,250	5,900	5,900	5,800	5,650	6,150	6,300	6,400	6,300	5,800
GGRM	48,850	19.00	5.74	Trading	62.1	65.0	1,344.0	50,800	47,450	48,100	47,350	46,450	49,750	50,650	51,400	51,000	46,200
HEXA	7,700	6.21	18.46	StrongSell	90.2	78.0	241.1	8,150	6,550	7,400	7,100	6,900	7,900	8,100	8,400	7,750	6,500
INCO	4,500	-9.55	1.12	Trading	44.4	36.5	(69.2)	4,575	4,475	4,475	4,425	4,400	4,550	4,575	4,625	4,600	4,450
INDF	5,800	17.17	5.45	OverBought	75.8	59.8	104.1	6,200	5,600	5,750	5,700	5,550	5,950	6,100	6,150	6,100	5,500
INDY	3,725	-26.96	-1.97	Trading	47.4	34.2	(77.3)	3,900	3,725	3,675	3,625	3,550	3,800	3,875	3,925	3,875	3,700
INTP	16,750	4.36	0.60	Trading	44.2	46.9	6.9	17,350	16,600	16,550	16,350	16,100	17,000	17,250	17,450	17,500	16,600
ISAT	5,050	-7.34	-0.98	StrongBuy	12.5	39.2	(45.0)	5,100	5,050	5,000	4,950	4,900	5,100	5,150	5,200	5,150	5,000
ITMG	44,950	-17.22	-1.86	OverSold	25.3	42.1	(442.9)	45,200	44,700	44,650	44,300	44,050	45,250	45,500	45,850	46,100	44,500
JSMR	3,625	2.11	3.57	TakeProfit	69.0	65.6	53.8	3,750	3,550	3,600	3,575	3,525	3,675	3,725	3,750	3,725	3,475
KLBF	3,625	9.02	6.62	Trading Sell	80.0	64.8	22.7	3,750	3,325	3,550	3,450	3,375	3,725	3,800	3,900	3,700	3,350
LSIP	2,325	-8.46	2.20	Trading	44.4	47.8	(21.9)	2,375	2,275	2,300	2,275	2,250	2,350	2,375	2,400	2,400	2,250
MYOR	12,950	19.91	0.00	Trading	58.5	58.4	153.7	13,050	12,850	12,750	12,550	12,150	13,350	13,750	13,950	13,500	12,500
PGAS	4,025	-10.06	1.26	Trading	50.0	52.6	3.3	4,075	4,000	4,000	3,950	3,900	4,100	4,150	4,200	4,125	3,975
PTBA	20,950	-12.53	1.70	OverBought	72.6	47.5	(96.2)	21,650	20,500	20,800	20,650	20,550	21,050	21,150	21,300	21,500	20,400
RALS	780	-9.30	1.30	Trading	50.0	49.6	1.6	790	775	775	770	755	795	810	815	800	760
SGRO	3,350	3.08	-1.47	Trading Buy	25.0	45.8	(10.0)	3,450	3,300	3,325	3,300	3,275	3,375	3,400	3,425	3,450	3,300
SMCB	2,175	-2.25	1.16	Trading	55.6	48.8	4.5	2,275	2,125	2,150	2,125	2,075	2,225	2,275	2,300	2,275	2,125
SMGR	9,700	-1.52	3.19	OverBought	75.7	54.6	59.1	10,000	9,550	9,600	9,500	9,350	9,850	10,000	10,100	9,950	9,300
SMRA	1,150	6.48	0.00	Trading	53.3	48.0	1.6	1,180	1,140	1,130	1,110	1,080	1,180	1,210	1,230	1,180	1,130
TINS	2,550	-10.53	4.08	OverBought	76.9	51.8	(32.8)	2,575	2,475	2,500	2,450	2,425	2,575	2,600	2,650	2,550	2,425
TLKM	7,200	-10.00	1.41	OverSold	35.3	44.6	(82.5)	7,350	7,150	7,150	7,100	7,000	7,300	7,400	7,450	7,400	7,100
UNTR	24,950	2.67	5.27	Trading Sell	69.6	70.9	514.3	25,800	23,800	24,650	24,350	24,050	25,250	25,550	25,850	25,400	23,400
UNVR	14,800	-7.79	-2.31	OverSold	35.5	44.0	8.4	15,050	14,800	14,650	14,500	14,300	15,000	15,200	15,350	15,300	14,700

S1 = Support 1 S2 = Support 2 S3 = Support 3
 R1 = Resisten 1 R2 = Resisten 2 R2 = Resisten 2
 STO = Stochastic Oscillator
 RSI = Relative Strength Index
 MACD = Moving Average Convergence Divergence
 H-5 = 5 hari sebelumnya

RESEARCH TEAM

Andrian Tanuwijaya	Equity Analyst	(andrian.tanuwijaya@trimegah.com)
Hanel Topada Era Tania	Equity Analyst	(hanel.tania@trimegah.com)
Paul Raymond Widjaja	Equity Analyst	(paul.widjaja@trimegah.com)
T Hedy Arifien	Technical Analyst	(hedy@trimegah.com)
Rovandi	Research Assistant	(rovandi@trimegah.com)

EQUITY CAPITAL MARKET TEAM

Nathanael Benny Prasetyo	Head of Retail ECM	(benny.prasetyo@trimegah.com)
Windra Djulnaily	Pluit, Jakarta	(windra.djulnaily@trimegah.com)
Ariawan Anwar	Artha Graha, Jakarta	(ariawan.anwar@trimegah.com)
Ferry Zabur	Kelapa Gading, Jakarta	(ferry.zabur@trimegah.com)
Wirjawan Joesoef	Mangga Dua, Jakarta	(iwan@trimegah.com)
Lukman Abdul Azis	Kebon Jeruk, Jakarta	(lukman@trimegah.com)
Tutik Suciati	Semarang, Jawa Tengah	(tuty.s@trimegah.com)
Sonny Muljadi	Surabaya, Jawa Timur	(sonny.muljadi@trimegah.com)
Ni Luh Ketut Sri Agustini	Denpasar, Bali	(sri.agustini@trimegah.com)
Philip Fernando Suwandi	Makassar, Sulawesi Selatan	(philip.fs@trimegah.com)
agus.jatmiko	Balikpapan, Kalimantan Timur	(agus.jatmiko@trimegah.com)
Asep Saepudin	Bandung, Jawa Barat	(asep.saepudin@trimegah.com)
Asep Saepudin	Cirebon, Jawa Barat	(asep.saepudin@trimegah.com)
Very Wijaya	Medan, Sumatera Utara	(very.wijaya@trimegah.com)
Tantie Rivi Watie	Pekanbaru, Riau	(tantierw@trimegah.com)
Agus Bambang Suseno	Solo, Jawa Tengah	(agus.suseno@trimegah.com)
Agus Bambang Suseno	Yogyakarta, Jawa Tengah	(agus.suseno@trimegah.com)
Donny Kristanto Setiadi	Palembang, Sumatra Selatan	(donny.kristanto@trimegah.com)
Sonny Muljadi	Malang, Jawa Timur	(sonny.muljadi@trimegah.com)

PT Trimegah Securities Tbk
18th Fl, Artha Graha Building
Jl. Jend. Sudirman Kav. 52-53
Jakarta 12190, INDONESIA
Tel : (6221) 2924 9088 Fax : (6221) 2924 9163

DISCLAIMER

This report has been prepared by PT Trimegah Securities Tbk on behalf of itself and its affiliated companies and is provided for information purposes only. Under no circumstances is it to be used or considered as an offer to sell, or a solicitation of any offer to buy. This report has been produced independently and the forecasts, opinions and expectations contained herein are entirely those of Trimegah Securities.

While all reasonable care has been taken to ensure that information contained herein is not untrue or misleading at the time of publication, Trimegah Securities makes no representation as to its accuracy or completeness and it should not be relied upon as such. This report is provided solely for the information of clients of Trimegah Securities who are expected to make their own investment decisions without reliance on this report. Neither Trimegah Securities nor any officer or employee of Trimegah Securities accept any liability whatsoever for any direct or consequential loss arising from any use of this report or its contents. Trimegah Securities and/or persons connected with it may have acted upon or used the information herein contained, or the research or analysis on which it is based, before publication. Trimegah Securities may in future participate in an offering of the company's equity securities.