

IHSG 4.003,7 64,2 1,63%

Ulasan Pasar



IHSG pada akhir pekan perdagangan kemarin, kembali mencatatkan rekor harga baru dengan ditutup menguat 1,6% di level 4.004. Melesatnya sejumlah saham unggulan dengan kapitalisasi besar yang berbasis manufaktur, perbankan, serta pertambangan, memberikan kontribusi cukup besar terhadap melesatnya IHSG mencapai level 4.000-nya.

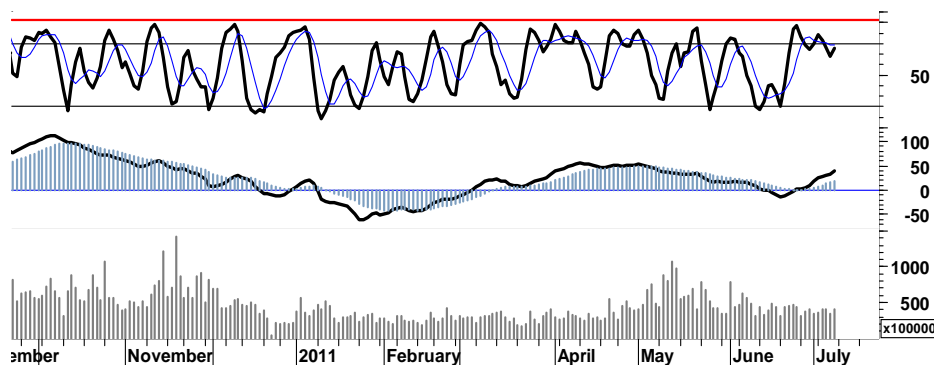
Maraknya sentimen dari data pertumbuhan positif tenaga kerja AS, mampu mengalihkan kekhawatiran para pelaku pasar terhadap gejala krisis utang yang sedang menyelimuti Eropa. Aksi akumulasi pembelian yang dilakukan oleh para Investor asing membukukan nilai total pembelian bersih sebesar Rp611miliar, merupakan salah satu katalis yang mendorong IHSG merambah masuk ke area 4.000. Sekalipun IHSG sesungguhnya telah berada pada area 'overbought', serta dibayang-bayangi oleh aksi profit taking.

Secara umum, IHSG mampu bertahan dalam

uptrend channel yang baru dengan basis trend support 3.920. Waspada probabilitas tekanan profit taking yang akan membayangi pergerakan IHSG, pada saat melanjutkan rally penguatannya menguji resistensi 4.015.

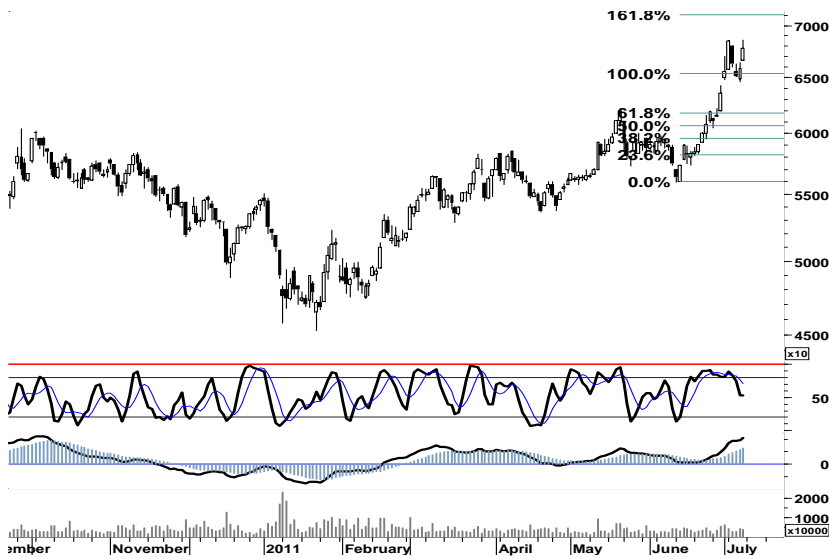
Kami perkirakan IHSG akan mencoba bergerak dalam rentang harga yang serupa 3.920 - 4.020

S1	S2	R1	R2
3,960	3,920	4,025	4,050



Saham Pilihan

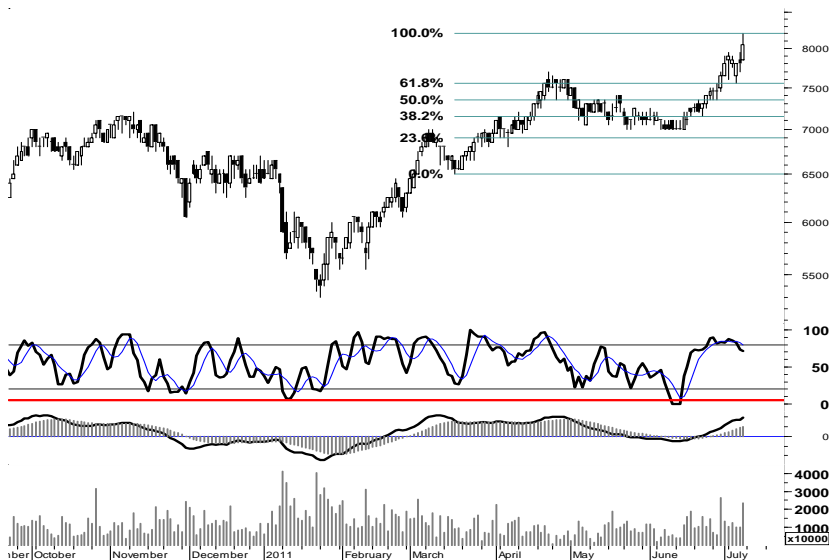
Saham	Harga (Rp)	Rekomendasi	Stochastic	RSI	BB Top	BB Bottom	S1	S2	R1	R2
ASII	67,800	Trading	52.43	69.44	69,100	64,100	66,750	65,700	69,700	70,750
BBCA	8,050	TakeProfit	70.97	76.47	8,100	7,750	7,900	7,700	8,400	8,600
BBRI	6,800	Trading	42.86	61.86	6,950	6,500	6,700	6,600	7,000	7,100
BMRI	7,600	TakeProfit	77.27	71.25	7,700	7,100	7,450	7,300	7,900	8,050
BUMI	3,025	Trading	53.85	39.83	3,050	2,975	3,000	2,975	3,075	3,100
ITMG	47,150	TakeProfit	62.50	60.79	47,450	43,700	45,650	44,150	48,650	50,150



Secara umum, pencatatan rekor harga baru ASII di level 68.600 telah membuka jalan untuk mencapai target harga di level 71.000.

Yang patut diwaspadai adalah terbentuknya celah support 66.400. Apabila ASII gagal melanjutkan rally penguatan serta melakukan penetrasi resistensi harga 69.000, maka ASII berpeluang untuk bergerak mix-negatif dalam rentang harga 65.700 - 69.000.

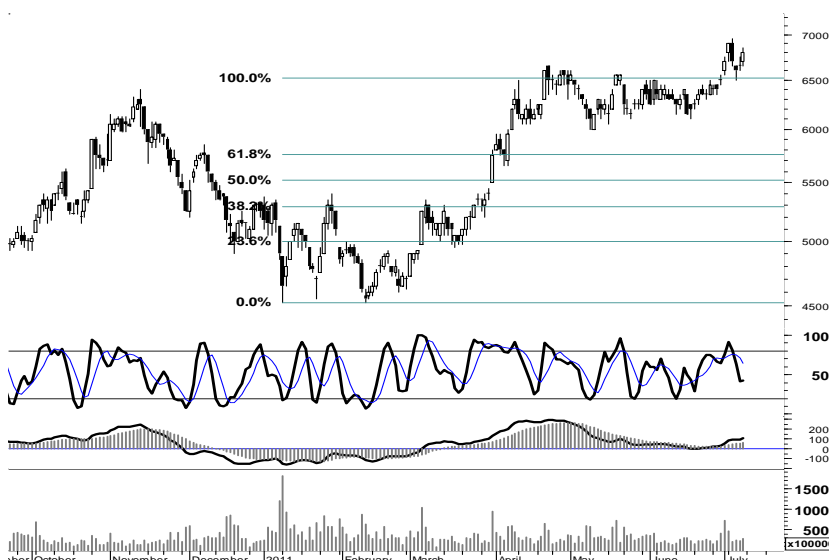
S1	S2	R1	R2
66,750	65,700	69,700	70,750



Pelemahan signal penguatan pada stochastic oscillator, mengindikasikan bahwa BBCA mulai kehilangan tenaga untuk melanjutkan rally menembus resistensi harga pada siklus retracement-nya di level 8.200.

Pada perdagangan hari ini, ASII berpeluang gerak dalam interval 7.500 - 7.900.

S1	S2	R1	R2
7,900	7,700	8,400	8,600



Ditutup pada area pivot support 6.800, merupakan peluang berimbang bagi BBRI.

Waspada potensi tekanan jual yang membayangi BBRI menguji arah support 6.500, apabila gagal melampaui resistensi harga 6.950.

S1	S2	R1	R2
6,700	6,600	7,000	7,100

BMRI

7,600

TakeProfit



Signal positif pada leading indicator yang ada, menunjukkan BMRI masih memiliki peluang melakukan penetrasi resistensi 7.600.

Akumulasi profit yang mungkin telah diperoleh, di saat BMRI melakukan swing menguji 7.600.

S1	S2	R1	R2
7,450	7,300	7,900	8,050

BUMI

3,025

Trading



Pada dasarnya signal positif leading indicator serta celah resisten 3.175 dan support kuat 2.950, telah membuka lebar peluang BUMI untuk kembali ke dalam zona hijau distribusi.

Perketat stop-loss level 2.950, dan manfaatkan swing positif pada interval 3.000 - 3.150.

S1	S2	R1	R2
3,000	2,975	3,075	3,100

ITMG

47,150

TakeProfit



Lonjakan harga sebesar 5,4% yang telah meninggalkan celah support 44.850, ITMG pada perdagangan hari ini akan dibayang-bayangi oleh aksi profit taking.

Dengan demikian, waspadai potensi tekanan yang akan menyeret ITMG menguji kekuatan support 45.650 apabila ITMG gagal melakukan penetrasi resistensi harga 47.150.

ITMG berpotensi gerak dalam rentang harga 46.100 - 47.100.

S1	S2	R1	R2
45,650	44,150	48,650	50,150

TRADE DATA

JCI (IHSG) 4,003.7 64.2 1.63%

YTD (Rp)	8.1% Volume (m) :	4,356
YTD (USD)	14.0% Nilai (Rpbn) :	3,328
Moving Avg 20day	3,839 Mkt Cap (Rptr) :	3,439
Moving Avg 50day	3,828 Market P/E (x) :	16.2
Moving Avg 200day	3,650 Market Div. Yield (%) :	2.4

Indonesia & Sectors +/- (%) YTD (%)

MSCI Indonesia	4,986.6	103.7	2.12	9.68
JII	552.5	9.7	1.78	3.68
LQ45	710.9	14.4	2.06	7.49
JAKFIN Index	525.5	11.9	0.02	12.61
JAKINFR Index	771.6	4.7	0.01	-5.81
JAKMINE Index	3,344.2	55.8	0.02	2.14
JAKCONS Index	1,216.4	18.6	0.02	11.13
JAKTRAD Index	546.3	4.1	0.01	15.24
JAKMIND Index	1,228.2	34.3	0.03	27.01
JAKBIND Index	415.4	4.7	0.01	7.28
JAKPROP Index	210.6	2.0	0.01	3.68
JAKAGRI Index	2,343.2	26.5	0.01	2.58

Commodities +/- (%) YTD (%)

CRB Index	343.55	-2.8	-0.79	3.23
Oil & Gas				
Crude Oil	96.20	-2.5	-2.50	5.27
Natural Gas	4.21	0.1	1.74	-4.54
COAL (Rotterdam)	123.25	-1.5	-1.16	-6.20
COAL (Amsterdam)	123.65	0.2	0.12	-1.83
COAL (Australia,wk)	120.40	0.0	0.00	-1.63
Industrial Metals				
Alumunium	2,519.50	-57.0	-2.21	2.45
Nickel	23,890	-10	-0.04	-3.47
Tin	26,800	-740	-2.69	-0.37
Precious Metal				
Gold	1,541.60	11.0	0.72	8.46
Silver	36.54	0.0	0.02	18.22
Soft Commodities				
CPO (Malaysia)	3,085.00	18.0	0.59	-19.11
CPO (Netherlands)	1,072.50	-7.5	-0.69	-16.54
Rubber	4,821.43	27.6	0.58	-3.45
Corn	642.25	17.3	2.76	2.11
Wheat	651.25	16.8	2.64	-18.00
Soybeans	1,346.75	6.0	0.45	-3.37
Rice (Indonesia)	7,200.00	250.0	3.60	1.41

Winners

Stock	Price	(%)	Stock	Price	(%)
ITMG	47,150	5.36	AMRT	3,600	-4.00
GGRM	51,000	3.55	BRMS	710	-2.74
BDMN	6,000	3.45	DUTI	1,900	-2.56
BMRI	7,600	3.40	FASW	3,075	-1.60
BBCA	8,050	3.21	MEGA	3,700	-1.33
ASII	67,800	2.96	TPIA	3,750	-1.32
BBNI	3,875	2.65	PNBN	900	-1.10
BBRI	6,800	2.26	ICBP	5,700	-0.87
UNTR	25,500	1.80	SCMA	6,350	-0.78
UNVR	15,000	1.69	PGAS	3,975	-0.62

Losers

Stock	Price	(%)	Stock	Price	(%)
AMRT	3,600	-4.00	ASRI	284,725	
BRMS	710	-2.74	BNBR	271,713	
DUTI	1,900	-2.56	MITI	259,160	
FASW	3,075	-1.60	ENRG	195,510	
MEGA	3,700	-1.33	TBLA	188,210	
TPIA	3,750	-1.32	DEWA	162,288	
PNBN	900	-1.10	BHIT	160,979	
ICBP	5,700	-0.87	BUMI	150,516	
SCMA	6,350	-0.78	DILD	150,481	
PGAS	3,975	-0.62	ELTY	136,898	

Regional Indices +/- (%) YTD (%)

MXWO	MSCI Word	1,343.1	-9.3	-0.68	4.93
SPX	S&P 500	1,343.8	-9.4	-0.70	6.85
US					
Dow Jones Industrial		12,657.2	-62.3	-0.49	9.33
Nasdaq	US	2,859.8	-12.8	-0.45	7.80
Europe					
EURO 50	Europe	273.8	-2.2	-0.79	-0.74
FTSE	London	5,990.6	-64.0	-1.06	1.54
DAX	German	7,402.7	-68.7	-0.92	7.07
CAC	France	3,913.6	-66.4	-1.67	2.86
SMI	Swiss	6,152.7	-58.4	-0.94	-4.40
BRIC					
BOVESPA	Brazil	61,513.2	-694.1	-1.12	-11.24
MICEX	Russia	1,724.6	-16.0	-0.92	2.17
SENSEX	India	18,858.0	-220.3	-1.15	-8.05
NIFTY	India	5,660.7	-68.3	-1.19	-7.72
SHCOMP	China	2,797.8	3.5	0.13	-0.37
SZCOMP	China	1,201.5	-0.8	-0.07	-6.92

Developed ASIA

Nikkei	Japan	10,137.7	66.6	0.66	-0.89
TPX	Japan	874.3	3.9	0.44	-2.72
HIS	Hong kong	22,726.4	196.3	0.87	-1.34
KOSPI	S.Korea	2,180.4	-0.2	-0.01	6.31
TAIEX	Taiwan	8,749.6	-23.9	-0.27	-2.48
FSSTI	Singapore	3,151.3	25.4	0.81	-1.22

ASEAN

SET	Thailand	1,088.5	5.4	0.50	5.39
PCOMP	Philippines	4,391.5	15.6	0.36	4.53
KLCI	Malaysia	1,594.7	4.5	0.28	4.99
VNINDEX	Vietnam	430.3	0.3	0.08	-11.21

Currency +/- (%) YTD (%)

EURUSD	Euro	1.427	-0.010	-0.69	6.58
GBPUSD	United Kingdom	1.606	0.009	0.53	2.86
USDCHF	Switzerland	0.837	-0.008	-0.91	-10.54
USDCAD	Canada	0.963	0.004	0.42	-3.54
AUDUSD	Australia	1.076	-0.002	-0.19	5.10
NZDUSD	New Zealand	0.838	0.004	0.54	7.40
USDJPY	Japan	80.6	-0.610	-0.75	-0.59
USDCNY	China	6.465	-0.001	-0.02	-2.15
USDHKD	Hongkong	7.782	0.000	0.01	0.12
USDSGD	Singapore	1.220	-0.002	-0.20	-4.95
Rupiah	Indonesia	8,514.0	-23.000	-0.27	-5.36

Value (Rpbn)

Value (Rpbn)	Volume (Lot)	Freq (x)
BMRI 501,363	ASRI 284,725	KRAS 6,929
ITMG 257,823	BNBR 271,713	MNCN 5,383
ASII 245,932	MITI 259,160	TBLA 3,498
BUMI 225,669	ENRG 195,510	MLPL 3,322
BBRI 193,522	TBLA 188,210	BMRI 3,299
BBCA 186,819	DEWA 162,288	PGAS 2,854
PGAS 169,233	BHIT 160,979	BUMI 2,749
IMAS 141,980	DILD 150,516	ITMG 2,723
SMGR 139,218	BUMI 150,481	BHIT 2,534
TINS 117,509	ELTY 136,898	IMAS 2,408

Code	Last	Ytd Chg(%)	H-5 Chg (%)	Rekomendasi	STO	RSI	MACD	Bollinger Band		Support			Resistance			H-5	
								Top	Bottom	1	2	3	1	2	3	Highest	Lowest
AALI	23,050	-13.99	-0.86	OverSold	30.6	46.6	(52.8)	23,350	22,900	23,000	22,900	22,750	23,250	23,400	23,500	23,600	22,800
ACES	3,000	5.26	0.00	OverBought	71.4	59.9	53.2	3,000	3,000	3,000	3,000	3,000	3,000	3,000	3,000	3,000	2,950
ADRO	2,600	-2.80	4.00	TakeProfit	70.6	70.8	46.6	2,625	2,500	2,600	2,575	2,575	2,625	2,625	2,650	2,600	2,450
AKRA	2,225	30.88	4.71	TakeProfit	72.2	79.8	111.5	2,300	2,125	2,175	2,125	2,075	2,275	2,325	2,375	2,275	2,100
ANTM	2,100	-15.15	0.00	OverBought	63.6	47.7	(6.7)	2,175	2,100	2,075	2,025	2,000	2,150	2,175	2,225	2,150	2,050
ASII	67,800	24.63	3.43	Trading	52.4	69.4	2,088.2	69,100	64,100	66,750	65,700	64,750	68,750	69,700	70,750	68,600	64,600
BBCA	8,050	24.81	3.21	TakeProfit	71.0	76.5	186.6	8,100	7,750	7,900	7,700	7,550	8,250	8,400	8,600	8,200	7,550
BBNI	3,875	1.97	-0.64	OverSold	23.8	55.9	9.6	3,925	3,750	3,850	3,800	3,775	3,925	3,950	4,000	3,950	3,775
BBRI	6,800	31.40	1.49	Trading	42.9	61.9	102.4	6,950	6,500	6,700	6,600	6,500	6,900	7,000	7,100	6,950	6,500
BBTN	1,800	7.78	3.45	TakeProfit	67.7	68.6	30.5	1,830	1,710	1,780	1,750	1,730	1,830	1,850	1,880	1,820	1,690
BDMN	6,000	9.09	-0.83	OverSold	25.0	50.8	(27.3)	6,100	5,750	5,950	5,850	5,800	6,100	6,150	6,250	6,150	5,800
BISI	1,390	-25.67	7.75	StrongSell	82.9	51.4	(44.2)	1,450	1,240	1,370	1,350	1,330	1,410	1,430	1,450	1,410	1,240
BMRI	7,600	17.83	4.11	TakeProfit	77.3	71.3	84.6	7,700	7,100	7,450	7,300	7,150	7,750	7,900	8,050	7,700	7,150
BSDE	890	1.14	-1.11	OverSold	20.0	51.4	(5.3)	910	835	870	850	840	900	910	930	920	850
BTEL	355	51.06	-1.39	OverSold	33.3	40.5	(2.4)	361	352	352	349	347	357	359	362	365	350
BUMI	3,025	-3.20	0.83	Trading	53.8	39.8	(99.0)	3,050	2,975	3,000	2,975	2,950	3,050	3,075	3,100	3,050	2,950
CTRA	470	34.29	10.59	StrongSell	100.0	71.2	10.9	488	438	464	457	454	474	477	484	470	425
ELTY	148	-8.07	-0.67	OverSold	20.0	46.4	(1.9)	151	147	147	146	144	150	152	153	152	147
EXCL	6,200	18.10	0.81	Trading	52.2	54.1	(24.4)	6,300	5,950	6,150	6,050	6,000	6,300	6,350	6,450	6,300	5,900
GGRM	51,000	24.24	2.00	Trading	54.5	69.8	1,414.5	51,500	47,550	50,100	49,200	48,550	51,650	52,300	53,200	51,400	47,400
HEXA	7,900	8.97	8.97	StrongSell	85.9	78.6	358.6	8,300	7,350	7,900	7,850	7,800	8,000	8,050	8,100	8,050	6,950
INCO	4,475	-10.05	-1.10	OverSold	26.9	40.2	(67.6)	4,550	4,375	4,450	4,400	4,375	4,525	4,550	4,600	4,600	4,350
INDF	5,850	18.18	-2.50	OverSold	24.0	60.1	103.7	6,050	5,650	5,800	5,750	5,700	5,900	5,950	6,000	6,100	5,700
INDY	3,750	-26.47	-1.96	Accumulate	22.7	38.9	(80.5)	3,825	3,650	3,700	3,650	3,600	3,800	3,850	3,900	3,875	3,675
INTP	16,850	4.98	-2.60	StrongBuy	16.9	50.6	(18.7)	17,050	16,400	16,800	16,700	16,650	16,950	17,000	17,100	17,500	16,500
ISAT	5,150	-5.50	1.98	OverBought	70.0	49.9	(32.5)	5,250	5,050	5,100	5,050	5,000	5,200	5,250	5,300	5,200	5,000
ITMG	47,150	-13.17	5.13	TakeProfit	62.5	60.8	(267.9)	47,450	43,700	45,650	44,150	43,400	47,900	48,650	50,150	47,150	44,500
JSMR	3,750	5.63	2.04	TakeProfit	66.7	71.4	63.3	3,775	3,575	3,675	3,575	3,525	3,825	3,875	3,975	3,775	3,550
KLBF	3,625	9.02	5.07	TakeProfit	73.5	64.9	50.9	3,675	3,600	3,600	3,575	3,525	3,675	3,725	3,750	3,700	3,400
LSIP	2,350	-7.48	1.08	Trading	42.9	51.6	(15.0)	2,375	2,300	2,325	2,300	2,275	2,375	2,400	2,425	2,400	2,275
MYOR	14,000	29.63	8.11	TakeProfit	71.8	74.9	280.5	14,750	12,750	13,900	13,800	13,600	14,200	14,400	14,500	14,450	12,500
PGAS	3,975	-11.17	-1.85	StrongBuy	15.0	44.0	(7.2)	4,075	3,950	3,950	3,900	3,875	4,025	4,050	4,100	4,125	3,925
PTBA	21,500	-10.23	1.42	Trading	58.8	57.7	(18.9)	21,650	20,800	21,250	20,950	20,750	21,750	21,950	22,250	21,650	20,750
RALS	800	-6.98	1.27	OverBought	63.6	55.5	3.3	815	775	790	775	760	820	835	850	820	770
SGRO	3,525	8.46	5.22	TakeProfit	75.0	62.6	1.4	3,575	3,300	3,450	3,375	3,325	3,575	3,625	3,700	3,525	3,300
SMCB	2,175	-2.25	-2.25	OverSold	29.4	49.4	2.3	2,225	2,125	2,150	2,125	2,100	2,200	2,225	2,250	2,275	2,125
SMGR	9,900	0.51	0.51	Trading	57.9	61.8	83.9	10,000	9,700	9,850	9,750	9,700	10,000	10,050	10,150	9,950	9,650
SMRA	1,140	5.56	-0.87	Trading	45.8	46.9	(0.4)	1,170	1,120	1,120	1,100	1,080	1,160	1,180	1,200	1,180	1,100
TINS	2,675	-6.14	7.00	StrongSell	100.0	66.6	(3.6)	2,725	2,500	2,625	2,550	2,525	2,725	2,750	2,825	2,675	2,475
TLKM	7,200	-10.00	0.00	OverSold	23.5	45.6	(73.6)	7,300	7,150	7,150	7,100	7,050	7,250	7,300	7,350	7,400	7,100
UNTR	25,500	4.94	4.08	TakeProfit	61.8	70.9	574.5	25,650	24,600	25,250	24,950	24,750	25,750	25,950	26,250	25,650	24,450
UNVR	15,000	-6.54	0.33	Trading	41.7	53.9	7.7	15,100	14,700	14,900	14,800	14,700	15,100	15,200	15,300	15,100	14,700

S1 = Support 1 S2 = Support 2 S3 = Support 3
 R1 = Resisten 1 R2 = Resisten 2 R2 = Resisten 2
 STO = Stochastic Oscillator
 RSI = Relative Strength Index
 MACD = Moving Average Convergence Divergence
 H-5 = 5 hari sebelumnya

RESEARCH TEAM

Andrian Tanuwijaya	Equity Analyst	(andrian.tanuwijaya@trimegah.com)
Hanel Topada Era Tania	Equity Analyst	(hanel.tania@trimegah.com)
Paul Raymond Widjaja	Equity Analyst	(paul.widjaja@trimegah.com)
T Hedy Arifien	Technical Analyst	(hedy@trimegah.com)
Rovandi	Research Assistant	(rovandi@trimegah.com)

EQUITY CAPITAL MARKET TEAM

Nathanael Benny Prasetyo	Head of Retail ECM	(benny.prasetyo@trimegah.com)
Windra Djulnaily	Pluit, Jakarta	(windra.djulnaily@trimegah.com)
Ariawan Anwar	Artha Graha, Jakarta	(ariawan.anwar@trimegah.com)
Ferry Zabur	Kelapa Gading, Jakarta	(ferry.zabur@trimegah.com)
Wirjawan Joesoef	Mangga Dua, Jakarta	(iwan@trimegah.com)
Lukman Abdul Azis	Kebon Jeruk, Jakarta	(lukman@trimegah.com)
Tutik Suciati	Semarang, Jawa Tengah	(tuty.s@trimegah.com)
Sonny Muljadi	Surabaya, Jawa Timur	(sonny.muljadi@trimegah.com)
Ni Luh Ketut Sri Agustini	Denpasar, Bali	(sri.agustini@trimegah.com)
Philip Fernando Suwandi	Makassar, Sulawesi Selatan	(philip.fs@trimegah.com)
agus.jatmiko	Balikpapan, Kalimantan Timur	(agus.jatmiko@trimegah.com)
Asep Saepudin	Bandung, Jawa Barat	(asep.saepudin@trimegah.com)
Asep Saepudin	Cirebon, Jawa Barat	(asep.saepudin@trimegah.com)
Very Wijaya	Medan, Sumatera Utara	(very.wijaya@trimegah.com)
Tantie Rivi Watie	Pekanbaru, Riau	(tantierw@trimegah.com)
Agus Bambang Suseno	Solo, Jawa Tengah	(agus.suseno@trimegah.com)
Agus Bambang Suseno	Yogyakarta, Jawa Tengah	(agus.suseno@trimegah.com)
Donny Kristanto Setiadi	Palembang, Sumatra Selatan	(donny.kristanto@trimegah.com)
Sonny Muljadi	Malang, Jawa Timur	(sonny.muljadi@trimegah.com)

PT Trimegah Securities Tbk
18th Fl, Artha Graha Building
Jl. Jend. Sudirman Kav. 52-53
Jakarta 12190, INDONESIA
Tel : (6221) 2924 9088 Fax : (6221) 2924 9163

DISCLAIMER

This report has been prepared by PT Trimegah Securities Tbk on behalf of itself and its affiliated companies and is provided for information purposes only. Under no circumstances is it to be used or considered as an offer to sell, or a solicitation of any offer to buy. This report has been produced independently and the forecasts, opinions and expectations contained herein are entirely those of Trimegah Securities.

While all reasonable care has been taken to ensure that information contained herein is not untrue or misleading at the time of publication, Trimegah Securities makes no representation as to its accuracy or completeness and it should not be relied upon as such. This report is provided solely for the information of clients of Trimegah Securities who are expected to make their own investment decisions without reliance on this report. Neither Trimegah Securities nor any officer or employee of Trimegah Securities accept any liability whatsoever for any direct or consequential loss arising from any use of this report or its contents. Trimegah Securities and/or persons connected with it may have acted upon or used the information herein contained, or the research or analysis on which it is based, before publication. Trimegah Securities may in future participate in an offering of the company's equity securities.