

**IHSG**      **3.751,6**      **-12,0**      **-0,32%**

*Ulisan Pasar*



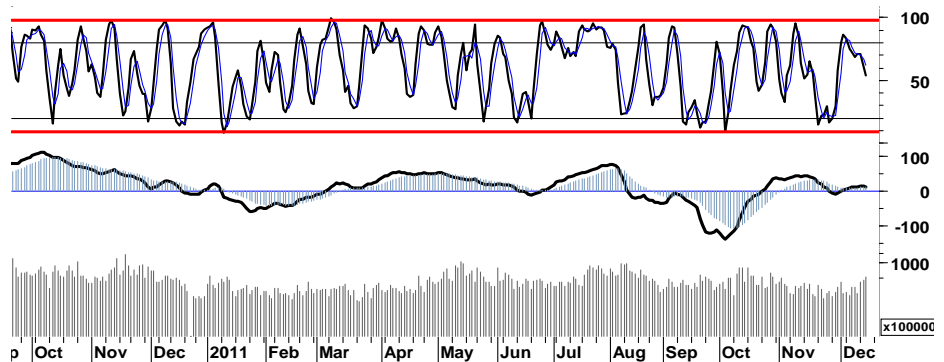
Minimnya sentimen positif ditengah kondisi ekonomi global yang kurang kondusif, mengakibatkan IHSG masih tertahan pada teritori negatif dengan kembali terpuruk -0,3% ditutup di level 3.752 pada perdagangan kemarin. Tekanan aksi jual kali ini mewarnai hampir seluruh 'counter' baik saham-saham lapis kedua, maupun saham-saham favorit. Para pelaku asing mencatatkan nilai penjualan bersih sebesar Rp88,9miliar. Perputaran saham pada perdagangan kemarin relatif sepi, dengan total kejadian tercatat kurang lebih 120kali. Dimana selama 10 hari terakhir IHSG cenderung bergerak datar dalam rentang 3.720 - 3.800, terhalang oleh sikap mayoritas para pelaku pasar yang masih ragu terhadap perkembangan penyelesaian krisis utang di Eropa maupun perlambatan perekonomian global pada umumnya.

Hal serupa pun mewarnai aktifitas perdagangan di bursa-bursa Eropa dan Amerikan, yang mengakibatkan DAX/CAC kembali terpuruk terpuruk masing-masing sebesar -0,9%, -1,8%.

Dan DJI, S&P500 dan Nasdaq ditutup masing-masing sebesar -1,1%, -1,1% dan -1,5%.

Secara umum IHSG masih berada dalam kondisi 'Strong Bullish', dengan peningkatan volume perdagangan selama 3 hari berturut-turut yang sekaligus mencerminkan belum terlihatnya signal negatif ataupun indikasi pergeseran dana (outflow) dari bursa di Indonesia.

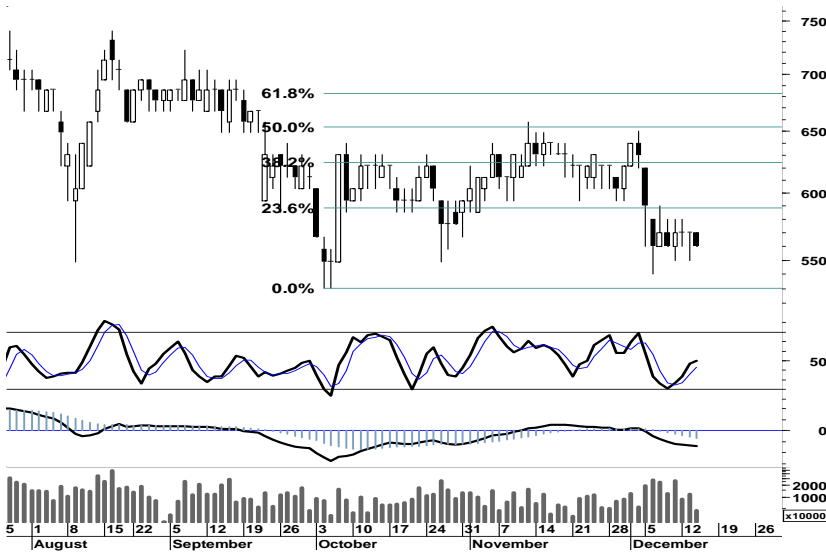
Kami perkirakan basis support 3.720/3.680 masih mampu menahan laju tekanan jual, yang masih akan mewarnai pergerakan IHSG pada perdagangan hari ini.



S1	S2	R1	R2
3,741	3,718	3,790	3,815

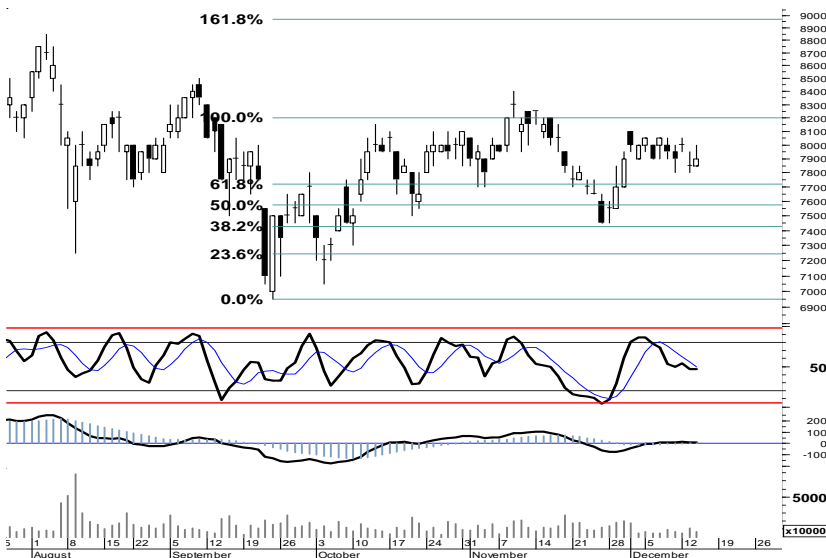
## Saham Pilihan

Saham	Harga (Rp)	Rekomendasi	Stochastic	RSI	BB Top	BB Bottom	S1	S2	R1	R2
AISA	560	Trading	50.00	35.79	580	560	560	555	575	580
BBCA	7,900	Trading	46.67	49.28	8,050	7,850	7,850	7,800	8,100	8,150
HRUM	6,950	Accumulate	30.00	38.37	7,350	6,950	6,900	6,800	7,200	7,300
JPFA	4,175	Accumulate	34.48	31.87	4,225	4,150	4,150	4,125	4,225	4,250
TLKM	7,100	Accumulate	27.78	38.56	7,300	7,100	7,050	7,000	7,200	7,250
UNVR	17,600	OverSold	27.27	57.28	17,850	17,250	17,400	17,150	17,950	18,200



Signal positif yang muncul pada stochastic (5d) kemarin, diharapkan mampu menahan AISA pada basis support 555 sekaligus mendorong saham emiten tersebut melakukan swing positif menguji resistensi harga 575/580.

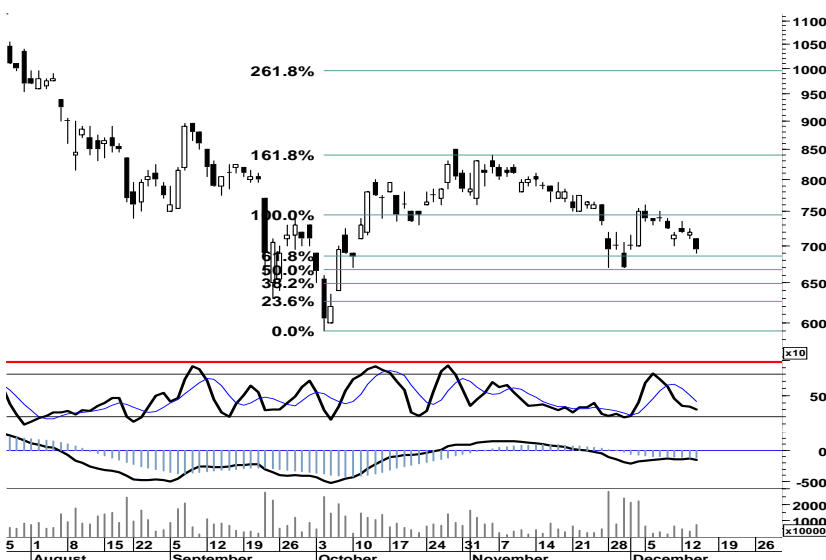
S1	S2	R1	R2
560	555	575	580



Perlawanan beli yang terjadi pada perdagangan kemarin berhasil mendorong BBCA melakukan pergerakan di atas MA50, untuk tetap bertahan dalam uptrend channel.

Pada perdagangan hari ini, BBCA memiliki peluang untuk bergerak dalam rentang harga 7.800 - 8.150.

S1	S2	R1	R2
7,850	7,800	8,100	8,150



Terbatasnya ruang tekanan pelemahan yang tercermin pada stochastic (5d), merupakan peluang bagi para pelaku pasar untuk mulai mengakumulasi HRUM pada support-support 6.900 - 6.600 apabila tekanan pelemahan masih berlanjut.

Batasi potensi kerugian, dengan menempatkan stop-loss harga pada level 6.500.

S1	S2	R1	R2
6,900	6,800	7,200	7,300

JPFA

4,175

Accumulate



Sebagaimana tercermin pada chart di samping, basis support 4.175 merupakan titik harga yang menentukan kemana selanjutnya JPFA akan bergerak.

Signal positif yang muncul pada stochastic (5d), memberikan peluang bagi JPFA untuk kembali kedalam teritori positif.

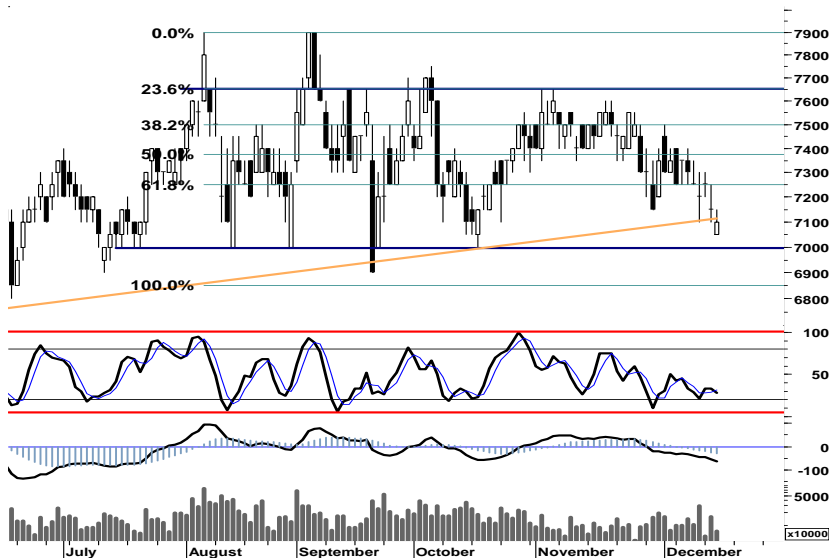
Pada perdagangan hari ini, JPFA diperkirakan akan mencoba bergerak dalam rentang harga 4.125 - 4.225.

S1	S2	R1	R2
4,150	4,125	4,225	4,250

TLKM

7,100

Accumulate



Support harga 7.000 pada TLKM, telah membatasi ruang pelemahan yang sekaligus membuka peluang bagi TLKM untuk melakukan technical rebound serta menguji resistensi harga 7.200.

S1	S2	R1	R2
7,050	7,000	7,200	7,250

UNVR

17,600

OverSold



Sebagaimana yang tercermin pada munculnya signal positif stochastic (5d), serta tertutupnya celah resistensi yang terbentuk kemarin telah membuka peluang bagi UNVR untuk melanjutkan rally penguatan.

Kami perkirakan UNVR pada perdagangan hari ini akan menguji area 17.400 - 17.950.

S1	S2	R1	R2
17,400	17,150	17,950	18,200

## TRADE DATA

### JCI (IHSG) 3,751.6 -12.0 -0.32%

YTD (Rp)	1.3%	Volume (m) :	4,986
YTD (USD)	0.1%	Nilai (Rpbn) :	3,328
Moving Avg 20day	3,738	Mkt Cap (Rpbn) :	3,439
Moving Avg 50day	3,717	Market P/E (x) :	16.2
Moving Avg 200day	3,765	Market Div. Yield (%) :	2.4

### Indonesia & Sectors +/- (%) YTD (%)

MSCI Indonesia	4,674.5	-18.3	-0.39	2.82
JII	524.2	-3.5	-0.67	-1.64
LQ45	660.7	-1.6	-0.24	-0.10
JAKFIN Index	484.2	0.5	0.00	3.76
JAKINFR Index	689.4	-5.0	-0.01	-15.84
JAKMINE Index	2,518.7	-3.2	-0.00	-23.07
JAKCONS Index	1,279.6	5.8	0.00	16.89
JAKTRAD Index	570.2	-4.9	-0.01	20.28
JAKMIND Index	1,276.0	-41.6	-0.03	31.96
JAKBIND Index	397.8	7.1	0.02	2.72
JAKPROP Index	225.3	0.5	0.00	10.93
JAKAGRI Index	2,104.6	-5.1	-0.00	-7.87

### Commodities +/- (%) YTD (%)

CRB Index	295.29	-10.5	-3.43	-11.27
<b>Oil &amp; Gas</b>				
Crude Oil	94.95	-5.2	-5.18	3.91
Natural Gas	3.14	-0.1	-4.36	-28.81
COAL (Rotterdam)	110.55	-1.3	-1.12	-15.87
COAL (Amsterdam)	110.75	-0.8	-0.67	-12.07
COAL (Australia,wk)	109.55	0.0	0.00	-10.50
<b>Industrial Metals</b>				
Aluminium	1,955.00	-40.0	-2.01	-20.50
Nickel	17,400	-905	-4.94	-29.70
Tin	18,525	-1,025	-5.24	-31.13
<b>Precious Metal</b>				
Gold	1,586.90	-76.2	-4.58	11.64
Silver	28.89	-2.3	-7.43	-6.55
<b>Soft Commodities</b>				
CPO (Malaysia)	3,048.00	47.0	1.57	-20.08
CPO (Netherlands)	1,027.50	17.5	1.73	-20.04
Rubber	3,363.65	29.0	0.87	-32.64
Corn	580.75	-13.8	-2.31	-7.67
Wheat	580.75	-19.8	-3.29	-26.88
Soybeans	1,100.00	-18.5	-1.65	-21.08
Rice (Indonesia)	8,000.00	0.0	0.00	12.68

### Winners

Stock	Price	(%)	Stock	Price	(%)
JKON	1,440	19.01	AMRT	4,100	-10.87
SMGR	10,750	4.88	EMTK	3,100	-6.06
BRAU	435	3.57	ASII	72,000	-3.94
BUMI	2,225	3.49	HRUM	6,950	-3.47
MNCN	1,320	2.33	ITMG	36,850	-2.38
INTP	16,250	2.20	ISAT	5,250	-1.87
UNVR	17,600	1.73	ADRO	1,860	-1.06
BBRI	6,600	0.76	PGAS	3,125	-0.79
BBNI	3,850	0.65	BMRI	6,450	-0.77
BBCA	7,900	0.64	TLKM	7,100	-0.70

### Losers

Stock	Price	(%)	Stock	Price	(%)
AMRT	4,100	-10.87	EMTK	3,100	-6.06
ASII	72,000	-3.94	HRUM	6,950	-3.47
HRUM	6,950	-3.47	ITMG	36,850	-2.38
ITMG	36,850	-2.38	ISAT	5,250	-1.87
ISAT	5,250	-1.87	ADRO	1,860	-1.06
ADRO	1,860	-1.06	PGAS	3,125	-0.79
PGAS	3,125	-0.79	BMRI	6,450	-0.77
BMRI	6,450	-0.77	TLKM	7,100	-0.70
TLKM	7,100	-0.70			

### Regional Indices +/- (%) YTD (%)

MXWO	MSCI World	1,139.0	-20.4	-1.76	-11.02
SPX	S&P 500	1,211.8	-13.9	-1.13	-3.64
<b>US</b>					
Dow Jones Industrial		11,823.5	-131.5	-1.10	2.12
Nasdaq	US	2,539.3	-40.0	-1.55	-4.28
<b>Europe</b>					
EURO 50	Europe	232.4	-4.9	-2.05	-15.72
FTSE	London	5,366.8	-123.3	-2.25	-9.04
DAX	Germany	5,675.1	-99.1	-1.72	-17.92
CAC	France	2,976.2	-102.6	-3.33	-21.78
SMI	Swiss	5,719.1	-40.6	-0.71	-11.14
<b>BRIC</b>					
BOVESPA	Brazil	56,646.9	-848.0	-1.47	-18.26
MICEX	Russia	1,372.4	-6.1	-0.45	-18.70
SENSEX	India	15,881.1	-121.4	-0.76	-22.57
NIFTY	India	4,763.3	-37.4	-0.78	-22.35
SHCOMP	China	2,228.5	-20.1	-0.89	-20.64
SZCOMP	China	906.5	-14.9	-1.61	-29.78

### Developed ASIA

Nikkei	Japan	8,519.1	-33.7	-0.39	-16.72
TPX	Japan	737.0	-3.7	-0.50	-18.00
HIS	Hong kong	18,354.4	-92.7	-0.50	-20.32
KOSPI	S.Korea	1,857.8	-6.3	-0.34	-9.42
TAIEX	Taiwan	6,922.6	26.3	0.38	-22.85
FSSTI	Singapore	2,672.4	-13.3	-0.50	-16.23

### ASEAN

SET	Thailand	1,023.5	-7.1	-0.69	-0.90
PCOMP	Philippines	4,285.9	3.3	0.08	2.02
KLCI	Malaysia	1,463.1	-2.3	-0.15	-3.67
VNINDEX	Vietnam	367.6	-4.2	-1.13	-24.16

### Currency +/- (%) YTD (%)

EURUSD	Euro	1.298	-0.005	-0.41	-3.00
GBPUSD	United Kingdom	1.547	-0.001	-0.08	-0.94
USDCHE	Switzerland	0.954	0.008	0.85	1.97
USDCAD	Canada	1.040	0.005	0.52	4.18
AUDUSD	Australia	0.991	-0.011	-1.07	-3.16
NZDUSD	New Zealand	0.751	-0.006	-0.83	-3.81
USDJPY	Japan	78.1	0.070	0.09	-3.76
USDCNY	China	6.371	0.006	0.09	-3.57
USDHKD	Hongkong	7.782	0.004	0.05	0.12
USDSGD	Singapore	1.310	0.004	0.31	2.06
Rupiah	Indonesia	9,089.0	-16.000	-0.18	1.03

### Value

Value (Rpbn)	Volume (Lot)	Freq (x)
ASII 222,047	ENRG 1,716,144	CASS 7,720
BUMI 177,431	ELTY 1,349,097	SMRU 6,177
INTP 140,941	BIPI 552,991	ELTY 4,090
ENRG 136,327	BNBR 405,381	ENRG 3,948
SMGR 130,218	SSIA 326,169	BIPI 3,793
ERAA 121,040	KIJA 302,870	TMPI 3,537
SSIA 96,887	ERAA 244,712	BHIT 3,432
ADRO 93,354	DEWA 209,600	MRAT 3,162
BMRI 92,198	BUMI 161,953	ADRO 2,804
BBRI 87,699	APLN 134,737	PTPP 2,659

Code	Last	Ytd Chg(%)	H-5 Chg (%)	Rekomendasi	STO	RSI	MACD	Bollinger Band		Support			Resistance			H-5	
								Top	Bottom	1	2	3	1	2	3	Highest	Lowest
AALI	20,750	-22.57	-7.57	StrongBuy	5.8	43.3	84.1	22,300	20,200	20,700	20,650	20,550	20,850	20,950	21,000	22,500	20,700
ACES	3,900	36.84	2.63	StrongSell	100.0	60.7	79.3	3,925	3,900	3,900	3,900	3,900	3,900	3,900	3,900	3,900	3,800
ADRO	1,860	-30.47	-7.00	StrongBuy	9.5	40.1	(16.2)	1,990	1,810	1,840	1,810	1,780	1,900	1,930	1,960	2,025	1,840
AISA	560	-28.21	-1.75	Trading	50.0	35.8	(14.0)	580	560	560	555	550	570	575	580	590	550
ANTM	1,620	-34.55	-2.41	OverSold	23.5	43.2	(10.0)	1,660	1,610	1,610	1,600	1,580	1,640	1,660	1,670	1,680	1,610
ASII	72,000	32.35	-1.30	OverBought	70.5	53.4	1,156.5	76,000	71,150	71,100	70,150	68,300	73,900	75,750	76,700	75,000	71,650
ASRI	455	49.18	2.25	Trading	57.1	56.4	3.7	466	442	447	439	432	462	469	477	470	435
BBCA	7,900	22.48	-1.86	Trading	46.7	49.3	(2.1)	8,050	7,850	7,850	7,800	7,700	8,000	8,100	8,150	8,050	7,800
BBNI	3,850	1.32	-0.65	OverSold	39.3	50.8	8.5	4,000	3,775	3,800	3,750	3,700	3,900	3,950	4,000	4,025	3,775
BBRI	6,600	27.54	-1.49	Trading	42.1	47.7	(7.2)	6,800	6,500	6,550	6,500	6,450	6,650	6,700	6,750	6,800	6,450
BDMN	4,275	-22.27	-2.84	Trading	43.5	32.5	(118.5)	4,450	4,200	4,225	4,175	4,125	4,325	4,375	4,425	4,425	4,200
BISI	900	-51.87	2.27	Trading	57.1	48.3	(13.8)	925	880	890	880	860	920	940	950	940	860
BKSL	265	145.37	0.00	OverBought	73.3	54.9	1.9	273	260	260	255	250	270	275	280	275	250
BMRI	6,450	0.00	-3.73	OverSold	31.3	42.1	(83.1)	6,700	6,400	6,400	6,350	6,250	6,550	6,650	6,700	6,700	6,400
BSDE	950	7.95	6.74	StrongSell	84.6	58.1	0.0	1,000	875	940	930	920	960	970	980	970	870
BTEL	260	10.64	-1.89	Trading	54.5	41.4	(2.2)	274	256	257	254	252	262	264	267	275	255
BUMI	2,225	-28.80	1.14	StrongSell	80.0	55.4	(1.7)	2,275	2,150	2,175	2,100	2,075	2,275	2,300	2,375	2,225	2,100
BWPT	1,150	-12.21	-4.96	StrongBuy	18.8	46.3	6.5	1,220	1,130	1,140	1,130	1,110	1,170	1,190	1,200	1,210	1,140
CPIN	2,300	28.49	-3.16	Trading	41.2	39.1	(67.1)	2,350	2,275	2,300	2,275	2,275	2,325	2,325	2,350	2,375	2,250
ELTY	123	-23.60	18.27	StrongSell	89.2	68.0	(0.2)	128	100	117	110	107	127	130	137	123	103
EXCL	4,500	-14.29	-0.55	Trading	47.6	36.4	(130.1)	4,600	4,500	4,475	4,450	4,425	4,525	4,550	4,575	4,625	4,450
GGRM	62,000	51.04	-2.05	OverSold	34.4	48.8	590.2	63,400	61,300	61,550	61,050	60,600	62,500	62,950	63,450	64,350	60,850
HEXA	8,650	19.31	1.17	StrongSell	85.7	64.8	137.0	8,750	8,550	8,650	8,600	8,600	8,700	8,700	8,750	8,650	8,450
HRUM	6,950	-26.46	-6.08	Accumulate	30.0	38.4	(159.5)	7,350	6,950	6,900	6,800	6,700	7,100	7,200	7,300	7,500	6,900
INCO	3,100	-37.69	-2.36	Trading	57.1	43.5	(49.2)	3,200	3,075	3,075	3,025	3,000	3,150	3,175	3,225	3,175	3,050
INDF	4,575	-7.58	-5.18	StrongBuy	11.1	31.2	(101.1)	4,850	4,500	4,550	4,525	4,475	4,625	4,675	4,700	4,825	4,550
INDY	2,125	-58.33	-4.49	Accumulate	29.4	38.6	(69.4)	2,225	2,100	2,100	2,075	2,050	2,150	2,175	2,200	2,250	2,100
INTP	16,250	1.25	2.85	TakeProfit	79.7	62.7	161.7	16,550	15,150	15,950	15,650	15,400	16,500	16,750	17,050	16,450	15,100
ISAT	5,250	-3.67	-6.25	OverSold	38.5	47.8	62.0	5,650	5,100	5,200	5,150	5,050	5,350	5,450	5,500	5,650	5,200
ITMG	36,850	-32.14	-5.99	StrongBuy	15.5	32.4	(1,225.4)	38,700	36,600	36,500	36,100	35,400	37,600	38,300	38,700	39,300	36,800
JPFA	4,175	31.50	-1.18	Accumulate	34.5	31.9	(147.6)	4,225	4,150	4,150	4,125	4,100	4,200	4,225	4,250	4,325	4,075
JSMR	4,250	19.72	6.92	StrongSell	93.9	72.0	81.6	4,400	4,025	4,200	4,150	4,100	4,300	4,350	4,400	4,275	3,850
KLBF	3,425	3.01	-2.84	OverSold	25.0	44.7	(4.3)	3,425	3,425	3,425	3,400	3,400	3,450	3,450	3,475	3,575	3,375
LSIP	2,150	-15.35	-4.44	Accumulate	31.6	38.4	2.2	2,350	2,100	2,125	2,075	2,050	2,200	2,225	2,275	2,325	2,100
MAIN	910	-70.65	-3.19	Trading	53.3	36.5	(19.2)	930	910	900	890	880	920	930	940	940	890
MAPI	5,050	81.98	-5.61	StrongBuy	10.6	40.8	(3.0)	5,400	4,900	5,000	4,950	4,950	5,100	5,100	5,150	5,500	4,975
MBAI	12,750	-18.79	2.00	StrongSell	100.0	52.2	(115.3)	12,950	12,550	12,750	12,750	12,750	12,750	12,750	12,750	12,750	12,200
PGAS	3,125	-30.17	-1.57	Trading	57.1	54.6	44.6	3,225	3,100	3,100	3,075	3,050	3,150	3,175	3,200	3,200	3,075
PTBA	16,900	-29.44	-1.46	OverBought	62.8	43.9	(140.9)	17,250	16,800	16,800	16,700	16,550	17,050	17,200	17,300	17,300	16,600
RALS	590	-97.17	0.00	StrongSell	85.7	46.3	(11.9)	600	580	580	565	560	600	605	620	590	570
SGRO	2,975	-8.46	-0.83	OverSold	30.8	48.2	(4.6)	3,050	2,950	2,950	2,925	2,900	3,000	3,025	3,050	3,050	2,925
SIPD	54	-27.03	1.89	OverBought	61.5	46.7	(0.9)	56	54	54	53	53	55	55	56	56	52
SMCB	2,175	-2.25	3.57	StrongSell	95.7	78.2	71.8	2,225	2,125	2,175	2,150	2,150	2,200	2,200	2,225	2,175	2,000
SMGR	10,750	9.14	10.82	StrongSell	89.5	74.6	278.8	11,100	9,400	10,400	10,050	9,850	10,950	11,150	11,500	10,800	9,450
SMRA	1,190	10.19	11.21	StrongSell	87.8	64.9	10.6	1,230	1,110	1,170	1,150	1,120	1,220	1,250	1,270	1,220	1,060
SSIA	610	-32.22	22.00	StrongSell	80.0	83.2	43.3	640	485	570	525	500	640	665	710	620	430
TINS	1,720	-39.65	0.00	Trading	58.8	41.1	(34.7)	1,730	1,700	1,710	1,690	1,680	1,740	1,750	1,770	1,740	1,680
TLKM	7,100	-11.25	-2.74	Accumulate	27.8	38.6	(58.2)	7,300	7,100	7,050	7,000	6,950	7,150	7,200	7,250	7,400	7,050
UNTR	24,700	1.65	-2.95	OverSold	30.4	49.7	62.7	25,350	24,200	24,500	24,250	24,050	24,950	25,150	25,400	25,500	24,250
UNVR	17,600	9.66	-1.68	OverSold	27.3	57.3	339.0	17,850	17,250	17,400	17,150	17,000	17,800	17,950	18,200	18,050	17,200

**S1** = Support 1      **S2** = Support 2      **S3** = Support 3  
**R1** = Resisten 1      **R2** = Resisten 2      **R2** = Resisten 2  
**STO** = Stochastic Oscillator  
**RSI** = Relative Strength Index  
**MACD** = Moving Average Convergence Divergence  
**H-5** = 5 hari sebelumnya

## RESEARCH TEAM

---

<b>Michele Gabriela</b>	Equity Analyst	(michele.gabriela@trimegah.com)
<b>T Hedy Arifien</b>	Technical Analyst	(heldy@trimegah.com)
<b>Rovandi</b>	Research Assistant	(rovandi@trimegah.com)

## EQUITY CAPITAL MARKET TEAM

---

<b>Nathanael Benny Prasetyo</b>	Head of Retail ECM	(benny.prasetyo@trimegah.com)
<b>Windra Djulnaily</b>	Pluit, Jakarta	(windra.djulnaily@trimegah.com)
<b>Ariawan Anwar</b>	Artha Graha, Jakarta	(ariawan.anwar@trimegah.com)
<b>Ferry Zabur</b>	Kelapa Gading, Jakarta	(ferry.zabur@trimegah.com)
<b>Wirjawan Joesoef</b>	Mangga Dua, Jakarta	(iwan@trimegah.com)
<b>Lukman Abdul Azis</b>	Kebon Jeruk, Jakarta	(lukman@trimegah.com)
<b>Untung Wijaya</b>	Semarang, Jawa Tengah	(untung.wijaya@trimegah.com)
<b>Sonny Muljadi</b>	Surabaya, Jawa Timur	(sonny.muljadi@trimegah.com)
<b>Ni Made Dwi Hapsari Wijayanti</b>	Denpasar, Bali	(dwihapsari.wijayanti@trimegah.com)
<b>Philip Fernando Suwandi</b>	Makassar, Sulawesi Selatan	(philip.fs@trimegah.com)
<b>agus.jatmiko</b>	Balikpapan, Kalimantan Timur	(agus.jatmiko@trimegah.com)
<b>Asep Saepudin</b>	Bandung, Jawa Barat	(asep.saepudin@trimegah.com)
<b>Ariffianto</b>	Cirebon, Jawa Barat	(ariffianto@trimegah.com)
<b>Very Wijaya</b>	Medan, Sumatera Utara	(very.wijaya@trimegah.com)
<b>Tantie Rivi Watie</b>	Pekanbaru, Riau	(tantierw@trimegah.com)
<b>Agus Bambang Suseno</b>	Solo, Jawa Tengah	(agus.suseno@trimegah.com)
<b>Untung Wijaya</b>	Yogyakarta, Jawa Tengah	(untung.wijaya@trimegah.com)
<b>Donny Kristanto Setiadi</b>	Palembang, Sumatra Selatan	(donny.kristanto@trimegah.com)
<b>Rr. Putri Ayu Erikusuma</b>	Malang, Jawa Timur	(putri.ayu@trimegah.com)

**PT Trimegah Securities Tbk**  
18<sup>th</sup> Fl, Artha Graha Building  
Jl. Jend. Sudirman Kav. 52-53  
Jakarta 12190, INDONESIA  
Tel : (6221) 2924 9088 Fax : (6221) 2924 9163

### DISCLAIMER

This report has been prepared by PT Trimegah Securities Tbk on behalf of itself and its affiliated companies and is provided for information purposes only. Under no circumstances is it to be used or considered as an offer to sell, or a solicitation of any offer to buy. This report has been produced independently and the forecasts, opinions and expectations contained herein are entirely those of Trimegah Securities.

While all reasonable care has been taken to ensure that information contained herein is not untrue or misleading at the time of publication, Trimegah Securities makes no representation as to its accuracy or completeness and it should not be relied upon as such. This report is provided solely for the information of clients of Trimegah Securities who are expected to make their own investment decisions without reliance on this report. Neither Trimegah Securities nor any officer or employee of Trimegah Securities accept any liability whatsoever for any direct or consequential loss arising from any use of this report or its contents. Trimegah Securities and/or persons connected with it may have acted upon or used the information herein contained, or the research or analysis on which it is based, before publication. Trimegah Securities may in future participate in an offering of the company's equity securities.