

IHSG

3.513,2

39,2

1,13%

Ulisan Pasar



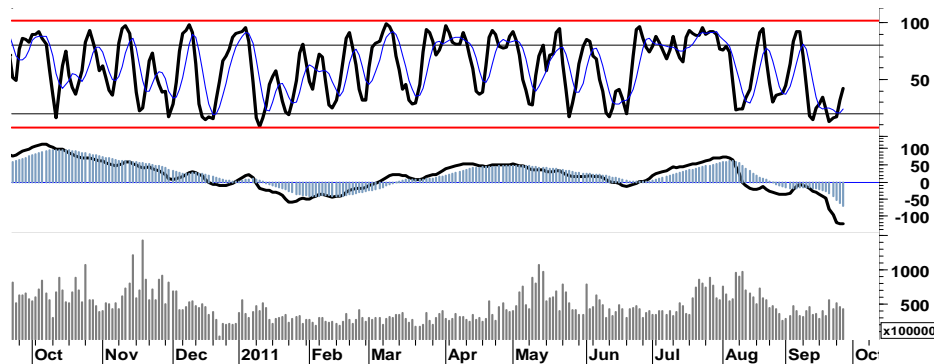
Sekalipun masih diselimuti oleh kekhawatiran, iklim perdagangan yang relatif kondusif mendorong minat akumulasi pada sejumlah saham-saham unggulan yang mendorong IHSG bergerak positif dan mencoba merambah area 3.500 pada perdagangan kemarin.

Indeks harga bursa-bursa utama Eropa dan Amerika yang pada perdagangan kemarin bergerak cukup fluktuatif serta mengalami koreksi pada akhir sesi perdagangan DAX -50, CAC - 27,76, sementara pada bursa utama Amerika mengalami tekanan sejak awal sesi perdagangan DJI -179,79, Nasdaq -55,25, dan S&P500 -24,32.

Sejak awal pekan ini, IHSG telah membukukan nilai positif 5,9% dengan rata-rata swing 1,4% perhari, secara umum masih akan didominasi oleh faktor eksternal dan pada perdagangan hari ini IHSG akan dibayang-bayangi oleh tekanan jual sejumlah saham favorit. Untuk dapat bertahan pada zona hijau perdagangan,

IHSG masih memiliki peluang yang tercermin pada beberapa leading indicator yang menunjukkan signal positif. Apabila IHSG mampu untuk mengawali perdagangan pada area 3.500 dimana akan terbuka peluang menguji resistensi 3.550, maka manfaatkan momentum tersebut untuk *mengakumulasi profit trading* yang telah diperoleh. Dan IHSG memiliki peluang untuk bergerak dalam interval 3.480 - 3.560.

Waspada! potensi tekanan yang akan menyeret IHSG menguji support harga 3.510/3.490.



S1	S2	R1	R2
3,465	3,420	3,545	3,580

Saham Pilihan

Saham	Harga (Rp)	Rekomendasi	Stochastic	RSI	BB Top	BB Bottom	S1	S2	R1	R2
INDF	4,725	Trading	49.17	33.98	4,925	4,375	4,650	4,575	4,925	5,000
INTP	13,350	OverBought	73.33	44.92	14,200	11,200	12,900	12,450	14,050	14,500
MAPI	4,475	Trading	40.51	49.49	4,700	3,975	4,400	4,325	4,675	4,750
PGAS	2,775	StrongSell	81.93	46.81	3,000	2,150	2,650	2,525	2,975	3,100
TLKM	7,350	Trading	52.38	50.72	7,550	6,950	7,300	7,200	7,500	7,600
UNVR	15,600	Trading	55.68	44.21	15,950	15,000	15,450	15,250	16,050	16,250

INDF

4,725

Trading



INDF mencoba untuk bertahan pada zona hijau perdagangan dengan ditutup berimbang pada pivot support 4.725.

Leading indicator positif, menunjukkan INDF masih memiliki kekuatan untuk setidaknya menuju celah harga tersisa pada level 4.850-4.975.

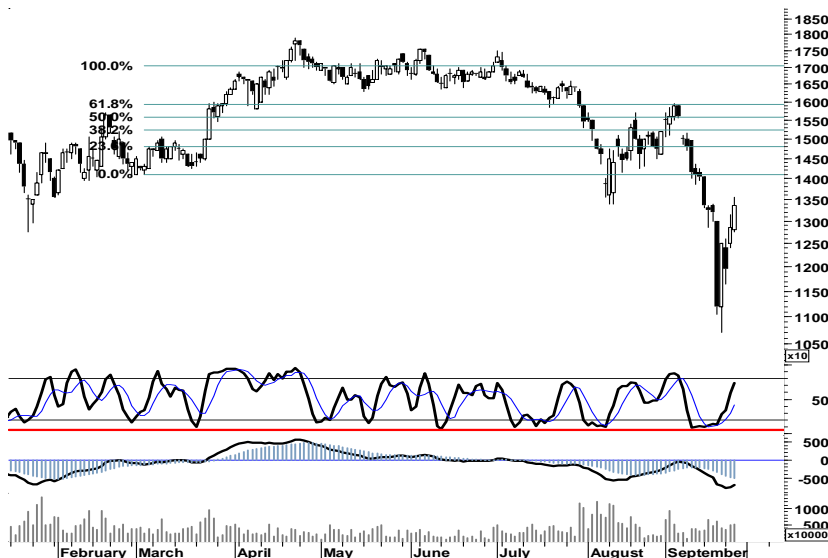
Akumulasi profit yang telah diperoleh, pada saat INDF merambah area resisten 4.925-5.000.

S1	S2	R1	R2
4,650	4,575	4,925	5,000

INTP

13,350

OverBought



Mendekati area overbought trading, mengindikasikan bahwa INTP mulai kehilangan kekuatan untuk melanjutkan rally menguji resistensi 14.050. Waspada potensi pembalikan arah atau technical correction menguji kembali support 12.450, apabila INTP gagal melakukan penetrasi 14.050.

S1	S2	R1	R2
12,900	12,450	14,050	14,500

MAPI

4,475

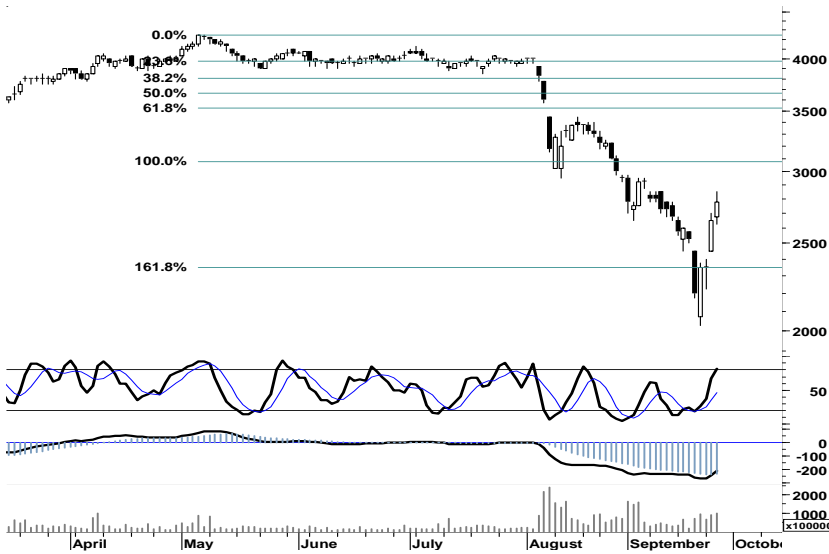
Trading



Signal positif pada beberapa leading indicator MAPI, menunjukkan bahwa saham tersebut masih memiliki kekuatan untuk menguji resistensi selanjutnya pada level 4.750.

Namun demikian munculnya Doji pada resistensi retracement 62%, merupakan signal negatif yang sekaligus mengindikasikan MAPI akan kehilangan momentum pada area resisten 4.675 - 4.750.

S1	S2	R1	R2
4,400	4,325	4,675	4,750



Setelah mengalami peningkatan harga hingga mencapai 9% selama hampir sepekan kemarin, PGAS mulai terlihat kehilangan momentum dan berpotensi koreksi pada area resistensi 2.975.

S1	S2	R1	R2
2,650	2,525	2,975	3,100



TLKM merupakan salah satu saham unggulan yang diharapkan mampu menahan laju tekanan yang lebih dalam, pada perdagangan hari ini.

Secara umum, TLKM masih memiliki kekuatan untuk mencoba merambah area trading dalam interval harga 7.300 - 7.500.

S1	S2	R1	R2
7,300	7,200	7,500	7,600



Diharapkan signal positif pada beberapa leading indicator, mampu memberikan peluang bagi UNVR untuk bertumpu pada basis support 15.350 dan swing trading dalam interval harga 15.450 - 16.050.

S1	S2	R1	R2
15,450	15,250	16,050	16,250

TRADE DATA

JCI (IHSG) 3,513.2 39.2 1.13%

YTD (Rp)	-5.1%	Volume (m) :	4,753
YTD (USD)	-4.2%	Nilai (Rpbn) :	3,328
Moving Avg 20day	3,747	Mkt Cap (Rpbn) :	3,439
Moving Avg 50day	3,900	Market P/E (x) :	16.2
Moving Avg 200day	3,730	Market Div. Yield (%) :	2.4

Indonesia & Sectors +/- (%) YTD (%)

MSCI Indonesia	4,318.1	78.5	1.85	-5.02
JII	482.5	8.1	1.70	-9.45
LQ45	614.5	9.8	1.62	-7.08
JAKFIN Index	463.4	7.2	0.02	-0.70
JAKINFR Index	693.1	11.3	0.02	-15.39
JAKMINE Index	2,508.5	18.3	0.01	-23.38
JAKCONS Index	1,163.7	2.1	0.00	6.31
JAKTRAD Index	489.8	5.3	0.01	3.32
JAKMIND Index	1,122.3	26.9	0.02	16.06
JAKBIND Index	358.8	3.6	0.01	-7.35
JAKPROP Index	202.2	-0.6	-0.00	-0.44
JAKAGRI Index	1,998.2	-21.8	-0.01	-12.52

Commodities +/- (%) YTD (%)

CRB Index	303.58	-7.9	-2.52	-8.78
-----------	--------	------	-------	-------

Oil & Gas

Crude Oil	81.21	-3.2	-3.84	-11.13
Natural Gas	3.76	-0.1	-1.78	-14.67
COAL (Rotterdam)	122.50	0.0	0.00	-6.77
COAL (Amsterdam)	121.46	-0.0	-0.03	-3.56
COAL (Australia,wk)	122.50	0.0	0.00	0.08

Industrial Metals

Aluminium	2,209.25	-10.8	-0.48	-10.17
Nickel	18,505	-450	-2.37	-25.23
Tin	20,550	-1,245	-5.71	-23.61

Precious Metal

Gold	1,616.10	-34.5	-2.09	13.70
Silver	30.13	-1.4	-4.45	-2.51

Soft Commodities

CPO (Malaysia)	2,960.00	-22.0	-0.74	-22.39
CPO (Netherlands)	1,025.00	10.0	0.99	-20.23
Rubber	3,893.75	-150.0	-3.71	-22.03
Corn	630.75	-21.5	-3.30	0.28
Wheat	638.75	-19.5	-2.96	-19.58
Soybeans	1,223.50	-39.5	-3.13	-12.22
Rice (Indonesia)	7,700.00	0.0	0.00	8.45

Winners

Stock	Price	(%)	Stock	Price	(%)
PGAS	2,775	4.72	PLIN	1,300	-10.96
PTBA	16,100	4.21	ENRG	140	-4.76
BMRI	6,200	4.20	BKSL	255	-3.77
UNTR	21,950	4.03	KRAS	810	-3.57
INTP	13,350	3.89	BUMI	2,050	-3.53
ADRO	1,690	3.68	ICBP	4,675	-2.60
BBNI	3,650	2.82	SIMP	1,130	-2.59
ASII	62,200	2.73	CPIN	2,375	-2.06
BBRI	5,900	2.61	SMAR	6,200	-1.59
TLKM	7,350	1.38	BDMN	4,525	-1.09

Losers

Stock	Price	(%)	Stock	Price	(%)
PLIN	1,300	-10.96	ENRG	140	-4.76
ENRG	140	-4.76	BKSL	255	-3.77
BKSL	255	-3.77	KRAS	810	-3.57
KRAS	810	-3.57	BUMI	2,050	-3.53
BUMI	2,050	-3.53	ICBP	4,675	-2.60
ICBP	4,675	-2.60	SIMP	1,130	-2.59
SIMP	1,130	-2.59	CPIN	2,375	-2.06
CPIN	2,375	-2.06	SMAR	6,200	-1.59
SMAR	6,200	-1.59	BDMN	4,525	-1.09
BDMN	4,525	-1.09			

Regional Indices +/- (%) YTD (%)

MXWO	MSCI World	1,122.5	-17.7	-1.55	-12.31
SPX	S&P 500	1,151.1	-24.3	-2.07	-8.47

US

Dow Jones Industrial		11,010.9	-179.8	-1.61	-4.89
Nasdaq	US	2,491.6	-55.3	-2.17	-6.08

Europe

EURO 50	Europe	227.4	-2.5	-1.10	-17.56
FTSE	London	5,217.6	-76.4	-1.44	-11.56
DAX	Germany	5,578.4	-50.0	-0.89	-19.32
CAC	France	2,995.6	-27.8	-0.92	-21.27
SMI	Swiss	5,551.7	-13.0	-0.23	-13.74

BRIC

BOVESPA	Brazil	53,270.4	-650.0	-1.21	-23.14
MICEX	Russia	1,377.9	-2.6	-0.18	-18.37
SENSEX	India	16,446.0	-78.0	-0.47	-19.81
NIFTY	India	4,945.9	-25.4	-0.51	-19.38
SHCOMP	China	2,392.1	-23.0	-0.95	-14.81
SZCOMP	China	1,032.2	-15.5	-1.48	-20.04

Developed ASIA

Nikkei	Japan	8,615.7	5.7	0.07	-15.77
TPX	Japan	754.1	5.5	0.74	-16.10
HIS	Hong kong	18,011.1	-119.5	-0.66	-21.81
KOSPI	S. Korea	1,723.1	-12.6	-0.73	-15.99
TAIEX	Taiwan	7,147.0	57.0	0.80	-20.35
FSSTI	Singapore	2,701.2	-24.7	-0.91	-15.32

ASEAN

SET	Thailand	931.6	-15.0	-1.59	-9.80
PCOMP	Philippines	3,876.1	154.9	4.16	-7.74
KLCI	Malaysia	1,371.6	7.3	0.54	-9.70
VNINDEX	Vietnam	434.0	-3.5	-0.80	-10.46

Currency +/- (%) YTD (%)

EURUSD	Euro	1.354	-0.004	-0.31	1.19
GBPUSD	United Kingdom	1.558	-0.006	-0.38	-0.24
USDCHE	Switzerland	0.900	0.004	0.46	-3.74
USDCAD	Canada	1.034	0.014	1.39	3.56
AUDUSD	Australia	0.978	-0.013	-1.34	-4.42
NZDUSD	New Zealand	0.777	-0.012	-1.50	-0.45
USDJPY	Japan	76.6	-0.200	-0.26	-5.56
USDCNY	China	6.394	-0.005	-0.07	-3.22
USDHKD	Hongkong	7.793	-0.005	-0.06	0.26
USDSGD	Singapore	1.296	0.013	0.99	1.00
Rupiah	Indonesia	8,890.0	-40.000	-0.45	-1.18

Value

Value (Rpbn)	Volume (Lot)	Freq (x)
BBRI 525,840	DEWA 983,380	PNIN 12,521
ASII 370,613	ENRG 839,350	BBRI 5,559
BMRI 368,777	ELTY 528,179	LPCK 5,394
PGAS 278,240	BORN 344,793	PGAS 4,834
ADRO 249,429	BNBR 332,132	BUMI 4,312
BUMI 245,144	ADRO 297,153	ADRO 4,120
INDF 179,548	KIJA 261,612	BMRI 3,620
BORN 157,697	BUMI 235,527	BORN 3,615
TLKM 120,028	PGAS 200,985	CPIN 3,320
BBNI 102,685	BBRI 180,120	ASII 3,227

Code	Last	Ytd Chg(%)	H-5 Chg (%)	Rekomendasi	STO	RSI	MACD	Bollinger Band		Support			Resistance			H-5	
								Top	Bottom	1	2	3	1	2	3	Highest	Lowest
AALI	19,350	-27.80	-11.44	Accumulate	30.4	30.8	(605.5)	21,250	17,900	19,150	18,950	18,700	19,600	19,850	20,050	21,900	18,100
ACES	3,350	17.54	3.08	OverBought	64.5	57.2	(9.6)	3,425	3,100	3,250	3,125	3,075	3,425	3,475	3,600	3,350	3,025
ADRO	1,690	-36.82	-11.05	Accumulate	38.2	32.3	(166.8)	1,770	1,510	1,620	1,550	1,500	1,740	1,790	1,860	1,930	1,430
AISA	670	-14.10	-8.22	Trading	42.3	33.1	(17.8)	690	665	660	650	640	680	690	700	730	640
ANTM	1,450	-41.41	-18.54	Trading	12.8	22.3	(111.5)	1,640	1,330	1,430	1,410	1,380	1,480	1,510	1,530	1,810	1,400
ASII	62,200	14.34	-2.89	Trading	51.4	42.9	(2,306.5)	63,700	56,300	60,800	59,350	58,350	63,250	64,250	65,700	65,400	55,000
BBCA	7,550	17.05	-2.58	Trading	55.4	43.9	(167.0)	7,800	7,150	7,500	7,400	7,350	7,650	7,700	7,800	8,000	6,950
BBNI	3,650	-3.95	-5.81	OverBought	63.6	43.0	(151.2)	3,775	3,300	3,525	3,400	3,300	3,750	3,850	3,975	3,950	2,975
BBRI	5,900	14.01	-3.28	Trading	59.7	44.6	(242.8)	6,150	5,250	5,750	5,550	5,450	6,050	6,150	6,350	6,200	5,000
BDMN	4,525	-17.73	-7.65	Accumulate	32.4	37.5	(165.2)	4,800	4,350	4,475	4,400	4,350	4,600	4,650	4,725	4,950	4,325
BISI	1,010	-45.99	-10.62	Trading	48.0	31.2	(71.6)	1,070	970	1,000	980	950	1,050	1,080	1,100	1,170	900
BMRI	6,200	-3.88	0.00	OverBought	65.3	44.1	(366.5)	6,500	5,250	5,950	5,650	5,500	6,400	6,550	6,850	6,300	5,100
BSDE	820	-6.82	-6.82	Accumulate	34.7	38.6	(48.4)	855	740	790	755	730	850	875	910	900	730
BTEL	330	40.43	-4.35	OverBought	70.0	37.7	(5.0)	339	323	319	307	299	339	347	359	345	295
BUMI	2,050	-34.40	-20.39	Accumulate	29.3	28.6	(164.9)	2,275	1,925	2,000	1,950	1,875	2,125	2,200	2,250	2,675	1,830
BWPT	1,050	-19.85	-10.26	Accumulate	33.9	31.7	(31.7)	1,130	1,000	1,050	1,040	1,030	1,070	1,080	1,090	1,180	980
ELTY	115	-28.57	-12.88	Accumulate	38.4	33.5	(8.4)	127	106	113	110	107	119	122	125	136	101
EXCL	4,975	-5.24	-0.50	StrongSell	84.4	45.9	(150.1)	5,200	4,475	4,900	4,825	4,750	5,050	5,125	5,200	5,050	3,675
GGRM	51,550	25.58	-2.92	Trading	47.8	43.2	(720.8)	52,750	48,800	50,900	50,200	49,400	52,400	53,200	53,900	54,000	47,400
HEXA	7,250	0.00	-9.38	Trading	54.8	42.5	(168.8)	7,800	6,500	7,150	7,050	6,900	7,400	7,550	7,650	8,100	5,900
HRUM	7,300	-22.75	-8.75	Trading	48.5	38.7	(430.5)	7,450	6,850	7,050	6,800	6,600	7,500	7,700	7,950	8,100	6,300
INCO	2,975	-40.20	-15.60	Trading	14.8	28.6	(225.6)	3,100	2,875	2,925	2,875	2,800	3,050	3,125	3,175	3,650	2,850
INDF	4,725	-4.55	-5.50	Trading	49.2	34.0	(392.6)	4,925	4,375	4,650	4,575	4,475	4,825	4,925	5,000	5,250	4,150
INDY	2,375	-53.43	-16.67	Accumulate	35.8	25.8	(238.2)	2,600	2,225	2,350	2,300	2,250	2,450	2,500	2,550	2,900	2,075
INTP	13,350	-16.82	1.14	OverBought	73.3	44.9	(672.4)	14,200	11,200	12,900	12,450	12,100	13,700	14,050	14,500	13,550	10,700
ISAT	5,400	-0.92	-3.57	OverBought	62.7	46.9	(9.6)	5,600	5,300	5,300	5,200	5,000	5,600	5,800	5,900	5,800	4,800
ITMG	40,500	-25.41	-7.95	OverSold	33.5	40.9	(1,418.8)	41,550	38,300	39,950	39,400	38,900	41,000	41,500	42,050	45,000	37,500
JSMR	3,950	11.27	0.00	Trading	56.9	53.2	(49.2)	4,075	3,425	3,800	3,650	3,550	4,050	4,150	4,300	4,000	3,400
KLBF	3,225	-3.01	-5.15	Trading	54.6	45.8	(90.0)	3,375	2,800	3,100	2,950	2,825	3,375	3,500	3,650	3,500	2,650
LSIP	1,930	-24.02	-10.23	Accumulate	35.6	34.0	(109.6)	2,030	1,760	1,900	1,860	1,830	1,970	2,000	2,040	2,175	1,710
MAPI	4,475	61.26	-8.67	Trading	40.5	49.5	(4.8)	4,700	3,975	4,400	4,325	4,225	4,575	4,675	4,750	5,200	3,800
PGAS	2,775	-37.99	9.90	StrongSell	81.9	46.8	(212.6)	3,000	2,150	2,650	2,525	2,425	2,875	2,975	3,100	2,850	2,025
PTBA	16,100	-32.78	-5.85	Trading	50.7	35.2	(1,045.1)	16,500	14,700	15,500	14,850	14,500	16,500	16,850	17,500	17,300	13,700
RALS	690	-19.77	-10.39	Trading Sell	20.7	24.1	(20.5)	740	670	20,870	20,870	20,870	20,870	20,870	20,870	780	680
SGRO	2,800	-13.85	-15.15	Accumulate	28.3	29.8	(171.6)	3,000	2,625	2,750	2,700	2,625	2,875	2,950	3,000	3,375	2,550
SMCB	1,730	-22.25	-7.98	Accumulate	25.0	32.3	(69.5)	1,780	1,670	1,710	1,690	1,650	1,770	1,810	1,830	1,940	1,650
SMGR	8,350	-15.23	1.21	OverBought	68.9	43.8	(291.2)	8,600	7,700	8,150	7,950	7,800	8,500	8,650	8,850	8,400	7,400
SMRA	1,030	-4.63	-14.17	Accumulate	27.6	34.1	(44.1)	1,110	950	1,010	990	970	1,050	1,070	1,090	1,250	920
TINS	1,820	-36.14	-13.33	Accumulate	27.6	32.3	(120.8)	1,930	1,680	1,800	1,770	1,740	1,860	1,890	1,920	2,150	1,650
TLKM	7,350	-8.13	-2.65	Trading	52.4	50.7	(25.7)	7,550	6,950	7,300	7,200	7,150	7,450	7,500	7,600	7,650	6,900
UNTR	21,950	-9.67	-0.90	Trading	56.4	44.4	(945.4)	22,650	19,100	21,250	20,550	20,150	22,350	22,750	23,450	22,650	18,700
UNVR	15,600	-2.80	-1.27	Trading	55.7	44.2	(199.6)	15,950	15,000	15,450	15,250	15,050	15,850	16,050	16,250	16,200	14,650

S1 = Support 1 S2 = Support 2 S3 = Support 3
 R1 = Resisten 1 R2 = Resisten 2 R2 = Resisten 2
 STO = Stochastic Oscillator
 RSI = Relative Strength Index
 MACD = Moving Average Convergence Divergence
 H-5 = 5 hari sebelumnya

RESEARCH TEAM

Andrian Tanuwijaya	Equity Analyst	(andrian.tanuwijaya@trimegah.com)
Hanel Topada Era Tania	Equity Analyst	(hanel.tania@trimegah.com)
Paul Raymond Widjaja	Equity Analyst	(paul.widjaja@trimegah.com)
Michele Gabriela	Equity Analyst	(michele.gabriela@trimegah.com)
T Hedy Arifien	Technical Analyst	(hedy@trimegah.com)
Rovandi	Research Assistant	(rovandi@trimegah.com)

EQUITY CAPITAL MARKET TEAM

Nathanael Benny Prasetyo	Head of Retail ECM	(benny.prasetyo@trimegah.com)
Windra Djulnaily	Pluit, Jakarta	(windra.djulnaily@trimegah.com)
Ariawan Anwar	Artha Graha, Jakarta	(ariawan.anwar@trimegah.com)
Ferry Zabur	Kelapa Gading, Jakarta	(ferry.zabur@trimegah.com)
Wirjawan Joesoef	Mangga Dua, Jakarta	(iwan@trimegah.com)
Lukman Abdul Azis	Kebon Jeruk, Jakarta	(lukman@trimegah.com)
Untung Wijaya	Semarang, Jawa Tengah	(untung.wijaya@trimegah.com)
Sonny Muljadi	Surabaya, Jawa Timur	(sonny.muljadi@trimegah.com)
Ni luh Ketut Sri Agustini	Denpasar, Bali	(sri.agustini@trimegah.com)
Philip Fernando Suwandi	Makassar, Sulawesi Selatan	(philip.fs@trimegah.com)
agus.jatmiko	Balikpapan, Kalimantan Timur	(agus.jatmiko@trimegah.com)
Asep Saepudin	Bandung, Jawa Barat	(asep.saepudin@trimegah.com)
Ariffianto	Cirebon, Jawa Barat	(ariffianto@trimegah.com)
Very Wijaya	Medan, Sumatera Utara	(very.wijaya@trimegah.com)
Tantie Rivi Watie	Pekanbaru, Riau	(tantierw@trimegah.com)
Agus Bambang Suseno	Solo, Jawa Tengah	(agus.suseno@trimegah.com)
Untung Wijaya	Yogyakarta, Jawa Tengah	(untung.wijaya@trimegah.com)
Donny Kristanto Setiadi	Palembang, Sumatra Selatan	(donny.kristanto@trimegah.com)
Rr. Putri Ayu Erikusuma	Malang, Jawa Timur	(putri.ayu@trimegah.com)

PT Trimegah Securities Tbk
18th Fl, Artha Graha Building
Jl. Jend. Sudirman Kav. 52-53
Jakarta 12190, INDONESIA
Tel : (6221) 2924 9088 Fax : (6221) 2924 9163

DISCLAIMER

This report has been prepared by PT Trimegah Securities Tbk on behalf of itself and its affiliated companies and is provided for information purposes only. Under no circumstances is it to be used or considered as an offer to sell, or a solicitation of any offer to buy. This report has been produced independently and the forecasts, opinions and expectations contained herein are entirely those of Trimegah Securities.

While all reasonable care has been taken to ensure that information contained herein is not untrue or misleading at the time of publication, Trimegah Securities makes no representation as to its accuracy or completeness and it should not be relied upon as such. This report is provided solely for the information of clients of Trimegah Securities who are expected to make their own investment decisions without reliance on this report. Neither Trimegah Securities nor any officer or employee of Trimegah Securities accept any liability whatsoever for any direct or consequential loss arising from any use of this report or its contents. Trimegah Securities and/or persons connected with it may have acted upon or used the information herein contained, or the research or analysis on which it is based, before publication. Trimegah Securities may in future participate in an offering of the company's equity securities.