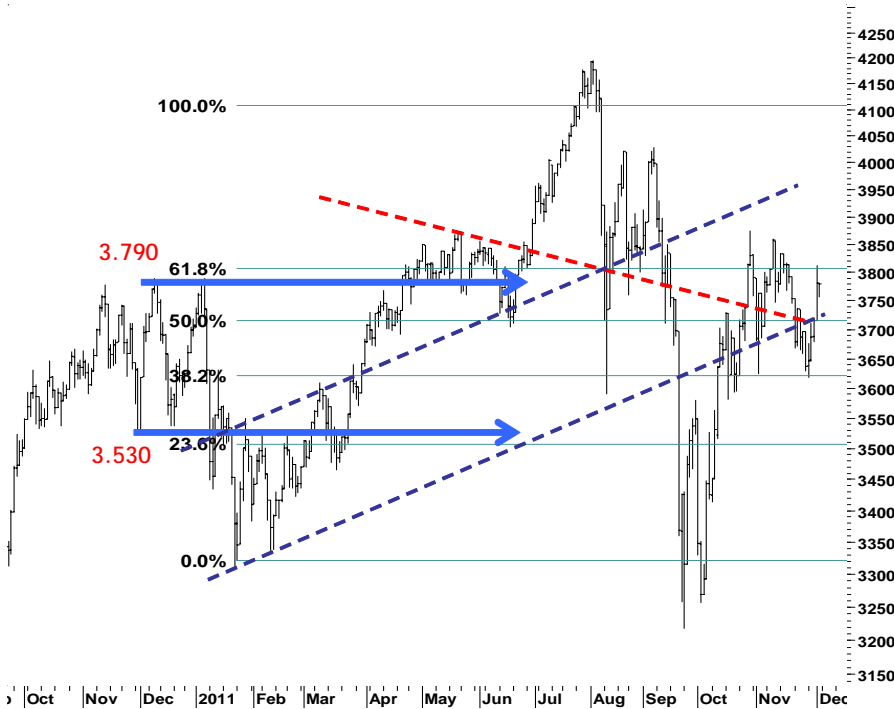


IHSG **3.779,8** **-1,3** **-0,03%**

Ulisan Pasar



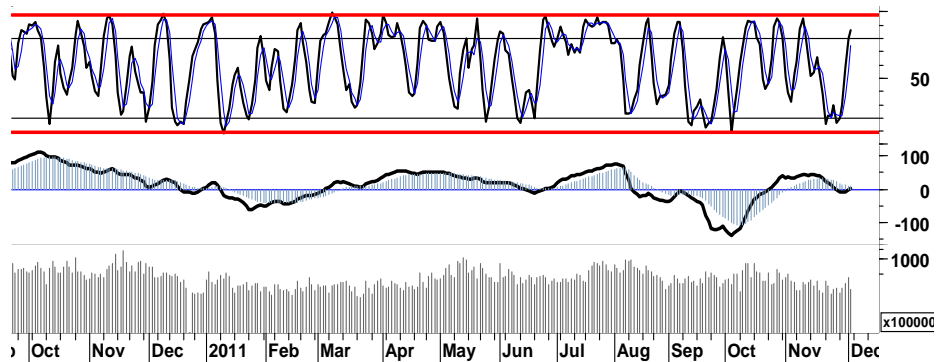
Berada pada area overbought, mengakibatkan IHSG sedikit sulit untuk melanjutkan rally penguatan sebagaimana diharapkan mengikuti euforia pergerakan positif bursa-bursa Asia - Pacific pada perdagangan kemarin. Akumulasi sejumlah saham di akhir sesi perdagangan pekan lalu, gagal mengembalikan IHSG kedalam area 3.800. IHSG di tutup melemah -1,3 poin pada level 3.780, sedikit lebih tinggi dari pivot support area 3.772. Investor asing pada perdagangan akhir pekan kemarin, membukukan nilai pembelian bersih sebesar Rp390 juta.

Indeks utama Eropa pada penutupan akhir pekan kemarin diwarnai oleh aksi profit taking dengan swing negatif, DAX/CAC berhasil ditutup menguat tipis sebesar 0,7%/1,1%. Dilain pihak indeks bursa di Amerika DJI, S&P500 yang mengalami koreksi masing-masing sebesar -0,01%, sementara Nasdaq bergerak menguat tipis 0,03%.

Melemahnya volume distribusi perdagangan

kemarin yang mulai memasuki downtrend area jangka pendeknya dengan rasio 15%, yang mengindikasikan adanya ancaman perubahan arah atau terganggunya siklus uptrend harga untuk kemudian memasuki kembali fase konsolidasi. Namun adanya beberapa leading indicator pada area neutral trading yang masih cenderung positif, dengan demikian apabila terjadi pelemahan basis support 3.720 untuk pekan ini akan mampu menahan laju tekanan jual.

IHSG pada perdagangan hari ini, kami perkirakan akan bergerak dalam rentang harga 3.730 - 3.800



S1	S2	R1	R2
3,765	3,750	3,790	3,795

Saham Pilihan

Saham	Harga (Rp)	Rekomendasi	Stochastic	RSI	BB Top	BB Bottom	S1	S2	R1	R2
ASII	71,000	Trading	73.91	58.35	72,600	69,400	70,500	70,000	72,000	72,500
BUMI	2,075	Trading	48.28	47.54	2,125	2,000	2,050	2,025	2,125	2,150
HRUM	7,500	Trading	40.74	50.82	7,650	6,600	7,150	6,800	7,900	8,250
INTP	15,100	Trading	52.46	52.94	15,400	14,650	14,950	14,800	15,600	15,750
MAPI	5,200	OverSold	27.78	53.17	5,350	5,150	5,150	5,100	5,400	5,450
TLKM	7,350	Trading	50.00	47.27	7,500	7,200	7,300	7,250	7,450	7,500

ASII

71,000

Trading



Ditutup pada area pivot 71.000, menempatkan ASII pada posisi berimbang.

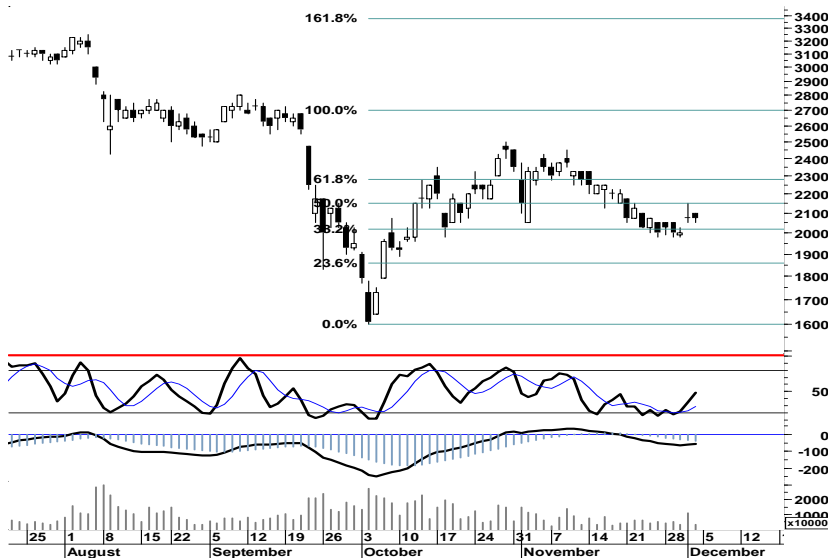
Signal Neutral pada Fast Moving oscillator, dengan basis support harga pada level 70.000 diharapkan mampu memberikan ruang bagi ASII untuk bergerak mix-positif dalam rentang harga 70.000-72.500.

S1	S2	R1	R2
70,500	70,000	72,000	72,500

BUMI

2,075

Trading



BUMI dapat menjadi alternatif pilihan trading pada menu hari ini, dimana pivot support 2.075 pada area positif trading stochastic oscillator merupakan momentum bagi BUMI untuk menguji 50% retracement di level 2.125 atau resistensi 2.150.

S1	S2	R1	R2
2,050	2,025	2,125	2,150

HRUM

7,500

Trading



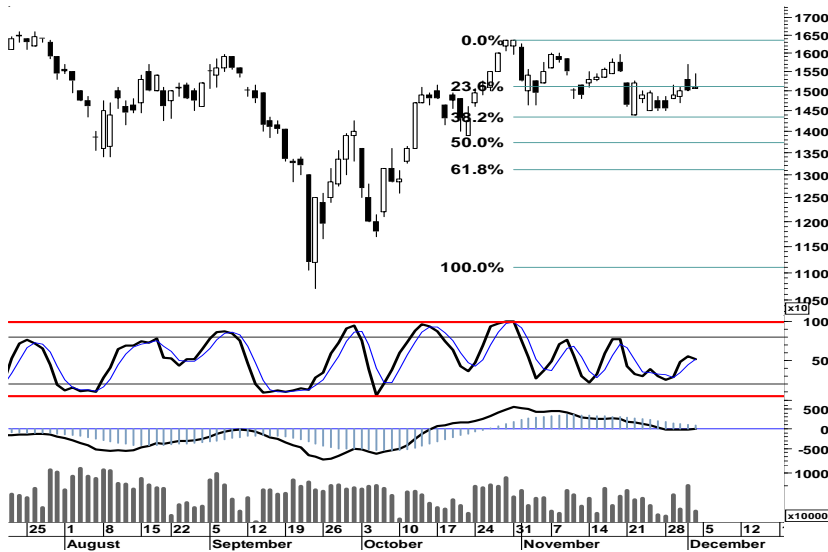
Signal positif pada leading maupun lagging indicator merupakan peluang bagi HRUM untuk keluar dari short-term bearish area, serta melanjutkan rally penguatan menguji target resistensi harga pada level 7.900.

S1	S2	R1	R2
7,150	6,800	7,900	8,250

INTP

15,100

Trading



Berada sedikit lebih rendah di bawah pivot support 15.100, yang harus dicermati adalah potensi berlanjutnya tekanan menuju support 14.500.

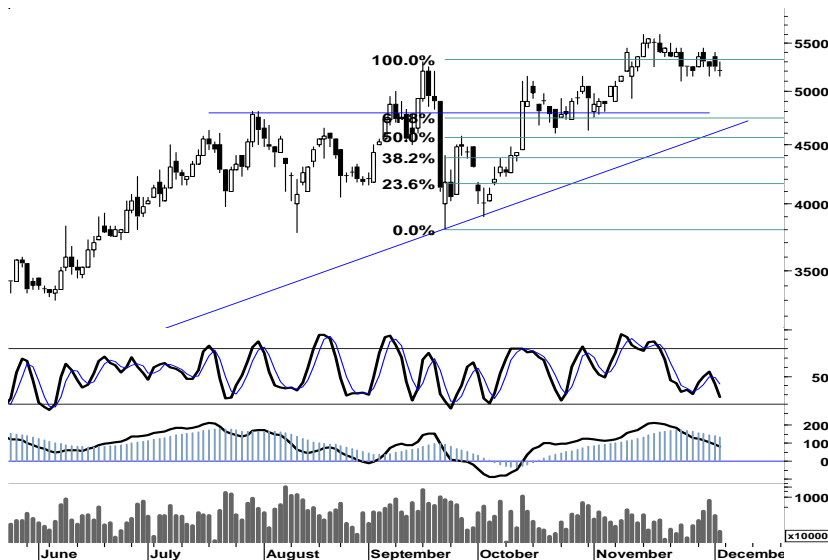
Probabilita yang mungkin akan terjadi pada perdagangan hari ini, INTP menguji pergerakan dalam rentang harga 14.800 - 15.000.

S1	S2	R1	R2
14,950	14,800	15,600	15,750

MAPI

5,200

OverSold



Terbatasnya ruang pelemahan sebagaimana tercermin pada stochastic oscillator (5d) serta support kuat 5.100, merupakan momentum pembalikan arah bagi MAPI untuk dapat keluar dari area konsolidasi sejak awal November lalu.

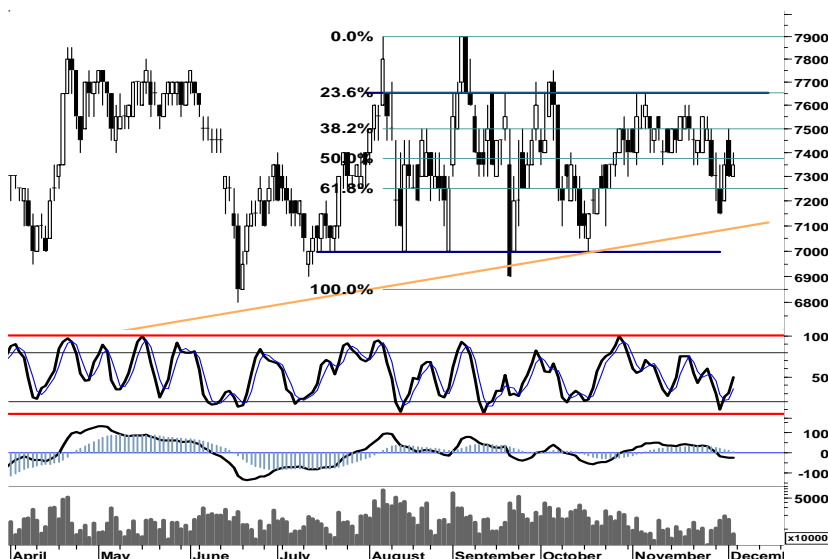
Kami perkirakan MAPI akan mencoba bergerak pada area 5.000 - 5.450.

S1	S2	R1	R2
5,150	5,100	5,400	5,450

TLKM

7,350

Trading



TLKM merupakan salah satu harapan bagi IHSG (selain ASII) yang dapat menahan laju tekanan jual pada bursa.

Leading maupun Lagging Indicator menggambarkan bahwa, TLKM akan kembali bergerak pada area positif 7.250 - 7.500.

S1	S2	R1	R2
7,300	7,250	7,450	7,500

TRADE DATA

JCI (IHSG) 3,779.8 -1.3 -0.03%

YTD (Rp)	2.1% Volume (m) :	2,679
YTD (USD)	1.5% Nilai (Rpbn) :	3,328
Moving Avg 20day	3,753 Mkt Cap (Rptr) :	3,439
Moving Avg 50day	3,660 Market P/E (x) :	16.2
Moving Avg 200day	3,752 Market Div. Yield (%) :	2.4

Indonesia & Sectors +/- (%) YTD (%)

MSCI Indonesia	4,731.9	5.3	0.11	4.08
JII	528.2	0.9	0.17	-0.88
LQ45	669.5	0.4	0.06	1.23
JAKFIN Index	493.3	0.6	0.00	5.70
JAKINFR Index	701.7	-4.5	-0.01	-14.34
JAKMINE Index	2,574.9	15.2	0.01	-21.36
JAKCONS Index	1,319.0	-5.7	-0.00	20.50
JAKTRAD Index	567.4	-2.5	-0.00	19.68
JAKMIND Index	1,263.7	-5.5	-0.00	30.68
JAKBIND Index	382.8	3.0	0.01	-1.15
JAKPROP Index	210.8	2.8	0.01	3.78
JAKAGRI Index	2,173.7	-12.5	-0.01	-4.84

Commodities +/- (%) YTD (%)

CRB Index	313.55	0.2	0.08	-5.78
Oil & Gas				
Crude Oil	100.96	0.8	0.76	10.48
Natural Gas	3.58	-0.1	-1.75	-18.64
COAL (Rotterdam)	112.20	-0.3	-0.27	-14.61
COAL (Amsterdam)	112.40	0.4	0.36	-10.76
COAL (Australia,wk)	110.85	0.0	0.00	-9.44
Industrial Metals				
Alumunium	2,131.50	-16.5	-0.77	-13.33
Nickel	17,740	990	5.91	-28.32
Tin	19,995	-105	-0.52	-25.67
Precious Metal				
Gold	1,751.30	11.5	0.66	23.21
Silver	32.63	-0.1	-0.24	5.57
Soft Commodities				
CPO (Malaysia)	3,066.00	4.0	0.13	-19.61
CPO (Netherlands)	1,040.00	0.0	0.00	-19.07
Rubber	3,385.05	-33.2	-0.97	-32.22
Corn	595.25	-6.3	-1.04	-5.37
Wheat	625.50	11.3	1.83	-21.25
Soybeans	1,135.75	7.8	0.69	-18.51
Rice (Indonesia)	7,750.00	0.0	0.00	9.15

Winners

Stock	Price	(%)	Stock	Price	(%)
TOTO	60,000	15.38	EMTK	2,900	-13.43
HRUM	7,500	7.14	IDKM	2,875	-6.50
BKSL	270	5.88	ISAT	5,650	-4.24
CPIN	2,450	3.16	EXCL	4,525	-4.23
UNTR	25,300	2.02	ICBP	5,050	-2.88
PTBA	17,600	1.73	INVS	5,450	-2.68
BDMN	4,375	1.16	BTPN	3,325	-2.21
BMRI	6,700	0.75	AALI	22,250	-1.55
TLKM	7,350	0.68	UNVR	17,600	-1.12
GGRM	66,400	0.45	ASII	71,000	-0.70

Losers

Stock	Price	(%)	Stock	Price	(%)
ASII	165,070	-0.70	ASII	71,000	-0.70

Regional Indices +/- (%) YTD (%)

MXWO	MSCI Word	1,187.6	3.2	0.27	-7.22
SPX	S&P 500	1,244.3	-0.3	-0.02	-1.06
US					
Dow Jones Industrial		12,019.4	-0.6	-0.01	3.82
Nasdaq	US	2,626.9	0.7	0.03	-0.98
Europe					
EURO 50	Europe	240.7	2.2	0.94	-12.72
FTSE	London	5,552.3	62.9	1.15	-5.89
DAX	Jerma	6,080.7	44.8	0.74	-12.06
CAC	France	3,165.0	35.0	1.12	-16.82
SMI	Swiss	5,718.9	37.3	0.66	-11.14
BRIC					
BOVESPA	Brazil	57,885.9	-257.6	-0.44	-16.48
MICEX	Russia	1,505.8	0.5	0.03	-10.80
SENSEX	India	16,846.8	363.4	2.20	-17.86
NIFTY	India	5,050.2	113.3	2.29	-17.68
SHCOMP	China	2,360.7	-26.2	-1.10	-15.93
SZCOMP	China	994.5	-19.7	-1.94	-22.96

Developed ASIA

Nikkei	Japan	8,643.8	46.4	0.54	-15.50
TPX	Japan	744.1	4.1	0.56	-17.21
HIS	Hong kong	19,040.4	38.1	0.20	-17.34
KOSPI	S.Korea	1,916.0	-0.1	-0.01	-6.58
TAIEX	Taiwan	7,140.7	-38.0	-0.53	-20.42
FSSTI	Singapore	2,773.4	11.5	0.42	-13.06

ASEAN

SET	Thailand	1,029.4	10.2	1.00	-0.33
PCOMP	Philippines	4,290.9	0.3	0.01	2.14
KLCI	Malaysia	1,489.0	3.8	0.25	-1.97
VNINDEX	Vietnam	383.9	3.8	0.99	-20.79

Currency +/- (%) YTD (%)

EURUSD	Euro	1.339	-0.007	-0.52	0.05
GBPUSD	United Kingdom	1.560	-0.009	-0.59	-0.10
USDCHF	Switzerland	0.921	0.006	0.61	-1.48
USDCAD	Canada	1.020	0.006	0.55	2.15
AUDUSD	Australia	1.022	-0.003	-0.28	-0.18
NZDUSD	New Zealand	0.777	-0.002	-0.27	-0.37
USDJPY	Japan	78.0	0.290	0.37	-3.86
USDCNY	China	6.360	-0.007	-0.11	-3.74
USDHKD	Hongkong	7.769	-0.000	-0.00	-0.05
USDSGD	Singapore	1.286	0.004	0.30	0.18
Rupiah	Indonesia	9,025.0	27.000	0.30	0.32

Value

Value (Rpbn)	Volume (Lot)	Freq (x)
ASII 165,070	BKSL 651,482	TMPI 7,789
HRUM 163,124	BLTA 357,082	MRAT 7,406
BMRI 115,092	BULL 305,789	BLTA 3,291
BBRI 89,469	ENRG 250,297	BKSL 2,093
BKSL 86,560	TMPI 218,260	HRUM 1,991
BUMI 69,474	KIJA 151,829	LPCK 1,746
ADRO 66,165	BHIT 134,988	BULL 1,671
TLKM 56,001	BIPI 117,087	BWPT 1,553
AKRA 51,947	ASRI 95,937	AKRA 1,491
PGAS 51,637	SSIA 83,006	ASII 1,484

Code	Last	Ytd Chg(%)	H-5 Chg (%)	Rekomendasi	STO	RSI	MACD	Bollinger Band		Support			Resistance			H-5	
								Top	Bottom	1	2	3	1	2	3	Highest	Lowest
AALI	22,250	-16.98	8.01	StrongSell	85.2	58.4	450.8	23,450	21,050	22,050	21,850	21,450	22,650	23,050	23,250	22,900	20,500
ACES	3,600	26.32	-1.37	Trading	44.4	47.9	78.8	3,950	3,575	3,600	3,575	3,550	3,650	3,675	3,700	3,900	3,600
ADRO	1,970	-26.36	5.35	OverBought	78.9	54.6	(2.4)	2,010	1,890	1,950	1,920	1,910	1,990	2,000	2,030	1,980	1,830
AISA	630	-19.23	1.33	OverBought	78.9	53.5	4.3	655	605	620	605	590	650	665	680	650	594
ANTM	1,680	-32.12	5.00	StrongSell	92.3	56.8	(0.9)	1,730	1,600	1,660	1,630	1,620	1,700	1,710	1,740	1,690	1,580
ASII	71,000	30.51	4.26	Trading	73.9	58.3	906.4	72,600	69,400	70,500	70,000	69,500	71,500	72,000	72,500	72,550	68,050
BBCA	8,000	24.03	7.38	StrongSell	86.1	56.0	(9.7)	8,300	7,600	7,950	7,900	7,850	8,050	8,100	8,150	8,100	7,450
BBNI	3,950	3.95	8.22	StrongSell	100.0	58.6	3.5	4,100	3,700	3,900	3,850	3,825	3,975	4,000	4,050	3,950	3,550
BBRI	6,700	29.47	2.29	OverBought	65.4	56.1	30.7	6,900	6,400	6,700	6,700	6,650	6,750	6,800	6,800	6,800	6,350
BDMN	4,375	-20.45	-1.13	Trading	42.3	39.2	(109.7)	4,450	4,325	4,350	4,325	4,300	4,400	4,425	4,450	4,500	4,275
BISI	870	-53.48	0.00	Trading	56.3	38.0	(27.0)	890	850	870	865	860	880	885	890	890	840
BMRI	6,700	3.88	3.88	OverBought	65.4	50.4	(52.9)	6,850	6,350	6,600	6,500	6,450	6,750	6,800	6,900	6,750	6,300
BSDE	910	3.41	1.11	OverBought	76.9	50.8	(5.8)	935	850	880	845	830	930	945	980	910	820
BTEL	285	21.28	7.55	OverBought	79.3	57.5	(1.3)	300	263	275	265	260	290	295	305	295	245
BUMI	2,075	-33.60	3.75	Trading	48.3	47.5	(37.5)	2,125	2,000	2,050	2,025	2,000	2,100	2,125	2,150	2,150	1,980
BWPT	1,200	-8.40	6.19	StrongSell	90.9	60.9	11.1	1,240	1,140	1,190	1,180	1,170	1,210	1,220	1,230	1,210	1,130
ELTY	108	-32.92	2.86	OverBought	61.1	47.5	(1.8)	110	104	107	106	105	109	110	111	110	103
EXCL	4,525	-13.81	-1.09	Trading	53.3	37.3	(124.3)	4,775	4,475	4,475	4,425	4,325	4,625	4,725	4,775	4,750	4,500
GGRM	66,400	61.75	10.67	StrongSell	91.9	69.8	1,644.2	69,100	61,400	65,750	65,100	64,750	66,750	67,100	67,750	67,000	60,000
HEXA	8,500	17.24	4.29	StrongSell	96.0	62.4	112.1	8,650	8,150	8,450	8,400	8,350	8,550	8,600	8,650	8,500	7,950
HRUM	7,500	-20.63	2.04	Trading	40.7	50.8	(142.4)	7,650	6,600	7,150	6,800	6,600	7,700	7,900	8,250	7,600	6,700
INCO	3,150	-36.68	3.28	Trading	59.1	46.5	(51.5)	3,200	3,050	3,125	3,100	3,075	3,175	3,200	3,225	3,200	3,000
INDF	4,850	-2.02	3.74	StrongSell	86.2	48.4	(93.1)	4,975	4,625	4,825	4,800	4,775	4,875	4,900	4,925	4,875	4,600
INDY	2,250	-55.88	9.76	StrongSell	81.8	47.5	(79.7)	2,350	2,100	2,225	2,200	2,175	2,275	2,300	2,325	2,300	2,000
INTP	15,100	-5.92	3.78	Trading	52.5	52.9	31.3	15,400	14,650	14,950	14,800	14,550	15,350	15,600	15,750	15,700	14,500
ISAT	5,650	3.67	9.71	TakeProfit	74.4	61.8	104.3	6,200	4,950	5,600	5,550	5,450	5,750	5,850	5,900	5,950	5,100
ITMG	39,950	-26.43	3.23	OverBought	64.6	46.0	(711.5)	41,300	37,250	39,500	39,000	38,550	40,450	40,900	41,400	41,100	36,250
JSMR	3,800	7.04	0.66	Trading	58.8	46.6	(4.0)	3,900	3,775	3,775	3,750	3,725	3,825	3,850	3,875	3,900	3,750
KLBF	3,550	6.77	5.19	TakeProfit	78.6	61.8	29.3	3,600	3,475	3,525	3,500	3,450	3,600	3,650	3,675	3,600	3,350
LSIP	2,325	-8.46	0.00	Trading	54.5	58.0	63.6	2,400	2,325	2,300	2,275	2,225	2,375	2,425	2,450	2,400	2,300
MAPI	5,200	87.39	0.00	OverSold	27.8	53.2	91.4	5,350	5,150	5,150	5,100	5,000	5,300	5,400	5,450	5,450	5,150
PGAS	3,225	-27.93	11.21	StrongSell	97.4	67.2	54.6	3,375	2,950	3,175	3,125	3,100	3,250	3,275	3,325	3,225	2,850
PTBA	17,600	-26.51	5.71	OverBought	76.2	54.5	(31.0)	17,900	16,600	17,200	16,750	16,550	17,850	18,050	18,500	17,750	16,500
RALS	570	-33.72	-1.72	Trading	50.0	39.8	(16.4)	615	560	560	550	540	580	590	600	620	540
SGRO	2,975	-8.46	0.85	Trading	52.4	48.9	8.6	3,050	2,975	2,975	2,950	2,925	3,025	3,050	3,075	3,100	2,900
SMCB	1,930	-13.26	5.46	StrongSell	88.6	61.7	8.4	1,980	1,850	1,910	1,890	1,880	1,940	1,950	1,970	1,930	1,800
SMGR	9,400	-4.57	6.21	StrongSell	86.7	58.6	73.5	9,750	8,900	9,350	9,300	9,250	9,450	9,500	9,550	9,550	8,700
SMRA	1,100	1.85	7.84	StrongSell	80.0	54.8	(11.3)	1,130	1,010	1,050	990	950	1,150	1,190	1,250	1,130	990
TINS	1,760	-38.25	2.92	OverBought	70.0	45.0	(29.6)	1,790	1,720	1,750	1,740	1,730	1,770	1,780	1,790	1,780	1,700
TLKM	7,350	-8.13	0.68	Trading	50.0	47.3	(26.2)	7,500	7,200	7,300	7,250	7,200	7,400	7,450	7,500	7,500	7,150
UNTR	25,300	4.12	6.08	OverBought	66.7	56.6	166.9	25,950	23,200	24,950	24,600	24,350	25,550	25,800	26,150	25,400	23,350
UNVR	17,600	9.66	-1.40	Trading	58.2	62.3	501.7	18,400	17,350	17,550	17,500	17,350	17,750	17,900	17,950	18,750	16,800

S1 = Support 1 S2 = Support 2 S3 = Support 3
 R1 = Resisten 1 R2 = Resisten 2 R2 = Resisten 2
 STO = Stochastic Oscillator
 RSI = Relative Strength Index
 MACD = Moving Average Convergence Divergence
 H-5 = 5 hari sebelumnya

RESEARCH TEAM

Andrian Tanuwijaya	Equity Analyst	(andrian.tanuwijaya@trimegah.com)
Hanel Topada Era Tania	Equity Analyst	(hanel.tania@trimegah.com)
Paul Raymond Widjaja	Equity Analyst	(paul.widjaja@trimegah.com)
Michele Gabriela	Equity Analyst	(michele.gabriela@trimegah.com)
T Hedy Arifien	Technical Analyst	(hedy@trimegah.com)
Rovandi	Research Assistant	(rovandi@trimegah.com)

EQUITY CAPITAL MARKET TEAM

Nathanael Benny Prasetyo	Head of Retail ECM	(benny.prasetyo@trimegah.com)
Windra Djulnaily	Pluit, Jakarta	(windra.djulnaily@trimegah.com)
Ariawan Anwar	Artha Graha, Jakarta	(ariawan.anwar@trimegah.com)
Ferry Zabur	Kelapa Gading, Jakarta	(ferry.zabur@trimegah.com)
Wirjawan Joesoef	Mangga Dua, Jakarta	(iwan@trimegah.com)
Lukman Abdul Azis	Kebon Jeruk, Jakarta	(lukman@trimegah.com)
Untung Wijaya	Semarang, Jawa Tengah	(untung.wijaya@trimegah.com)
Sonny Muljadi	Surabaya, Jawa Timur	(sonny.muljadi@trimegah.com)
Ni luh Ketut Sri Agustini	Denpasar, Bali	(sri.agustini@trimegah.com)
Philip Fernando Suwandi	Makassar, Sulawesi Selatan	(philip.fs@trimegah.com)
agus.jatmiko	Balikpapan, Kalimantan Timur	(agus.jatmiko@trimegah.com)
Asep Saepudin	Bandung, Jawa Barat	(asep.saepudin@trimegah.com)
Ariffianto	Cirebon, Jawa Barat	(ariffianto@trimegah.com)
Very Wijaya	Medan, Sumatera Utara	(very.wijaya@trimegah.com)
Tantie Rivi Watie	Pekanbaru, Riau	(tantierw@trimegah.com)
Agus Bambang Suseno	Solo, Jawa Tengah	(agus.suseno@trimegah.com)
Untung Wijaya	Yogyakarta, Jawa Tengah	(untung.wijaya@trimegah.com)
Donny Kristanto Setiadi	Palembang, Sumatra Selatan	(donny.kristanto@trimegah.com)
Rr. Putri Ayu Erikusuma	Malang, Jawa Timur	(putri.ayu@trimegah.com)

PT Trimegah Securities Tbk
18th Fl, Artha Graha Building
Jl. Jend. Sudirman Kav. 52-53
Jakarta 12190, INDONESIA
Tel : (6221) 2924 9088 Fax : (6221) 2924 9163

DISCLAIMER

This report has been prepared by PT Trimegah Securities Tbk on behalf of itself and its affiliated companies and is provided for information purposes only. Under no circumstances is it to be used or considered as an offer to sell, or a solicitation of any offer to buy. This report has been produced independently and the forecasts, opinions and expectations contained herein are entirely those of Trimegah Securities.

While all reasonable care has been taken to ensure that information contained herein is not untrue or misleading at the time of publication, Trimegah Securities makes no representation as to its accuracy or completeness and it should not be relied upon as such. This report is provided solely for the information of clients of Trimegah Securities who are expected to make their own investment decisions without reliance on this report. Neither Trimegah Securities nor any officer or employee of Trimegah Securities accept any liability whatsoever for any direct or consequential loss arising from any use of this report or its contents. Trimegah Securities and/or persons connected with it may have acted upon or used the information herein contained, or the research or analysis on which it is based, before publication. Trimegah Securities may in future participate in an offering of the company's equity securities.