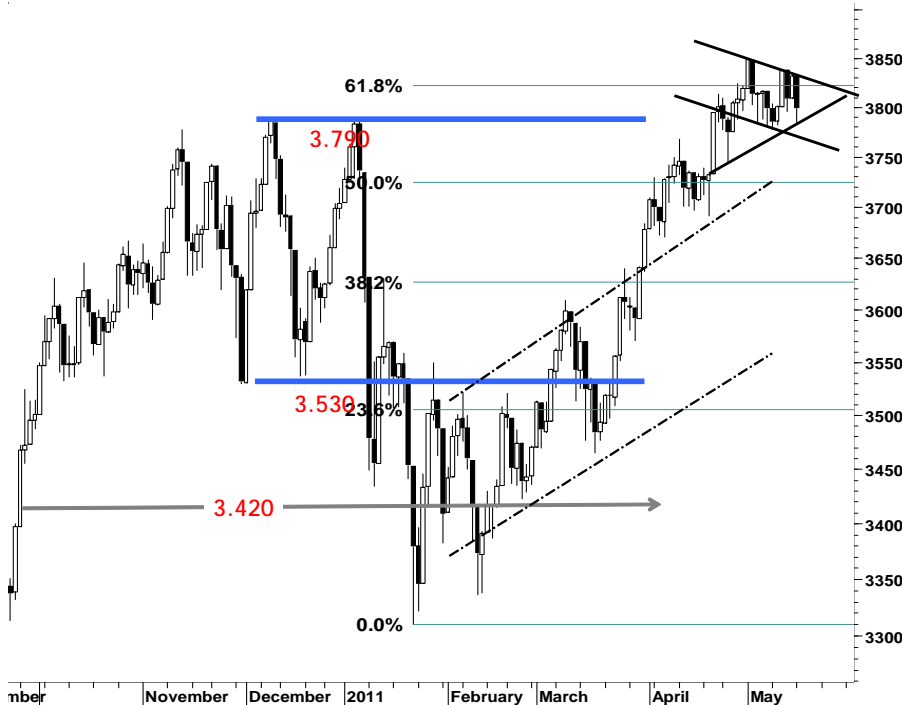


IHSG

3.799,2 -32,8 -0,86%

Ulusan Pasar



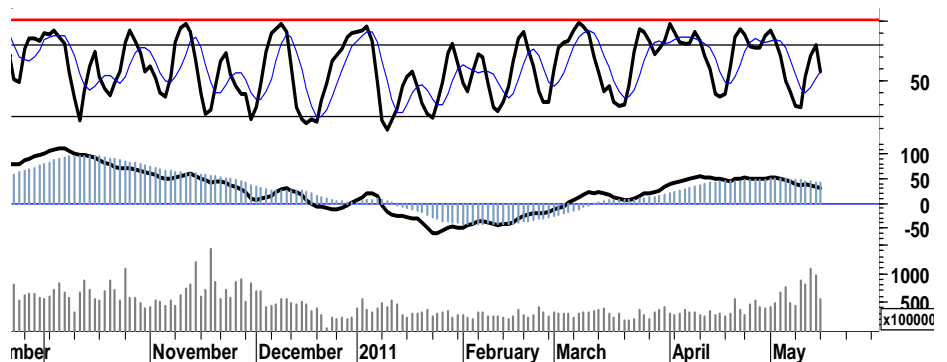
Derasnya arus tekanan jual terhadap sejumlah saham unggulan serta beberapa saham favorit pada perdagangan menjelang hari raya Waisak kemarin menahan laju penguatan IHSG, sehingga ditutup melemah 0,86% di level 3.799 dan gagal bertahan pada support 3.800. Sejak awal May 2011, perjalanan IHSG cenderung berjalan searah dalam downtrend channel jangka pendek dengan berbasis trend resisten 3.830 - 3.850.

Tekanan jual serta melemahnya pergerakan harga yang sekaligus mengiringi munculnya dead-cross stochastic, mengindikasikan adanya signal negatif terhadap IHSG dan potensi berlanjutnya tekanan pelemahan.

IHSG membutuhkan lebih dari sekedar dukungan sentimen positif untuk dapat keluar dari downtrend channel jangka pendek, dan trend support symetrical triangle yang terdapat pada chart diselah kiri, mampu mendorong IHSG keluar dari area negatif.

Perketat stop-loss harga pada level 3.750 untuk membatasi resiko yang mungkin muncul, apabila IHSG gagal menahan laju tekanan melalui basis support 3.780.

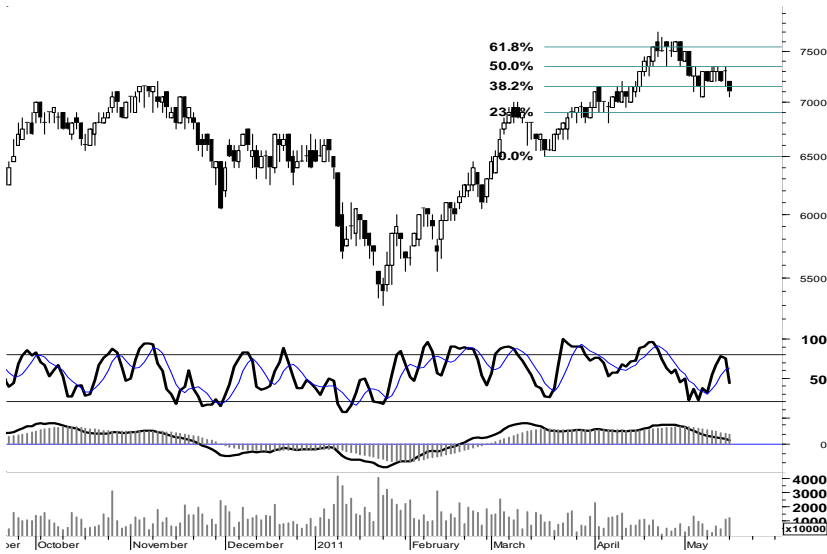
Secara umum IHSG berada dalam kondisi bullish, dan diharapkan mampu menahan derasnya laju tekanan jual untuk bergerak dalam interval harga 3.760 - 3.825.



S1	S2	R1	R2
3,780	3,760	3,825	3,850

Saham Pilihan

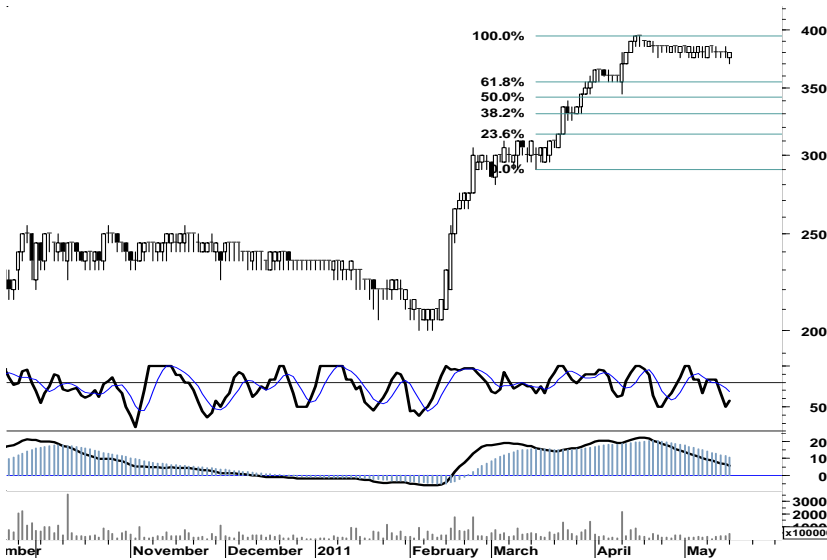
Saham	Harga (Rp)	Rekomendasi	Stochastic	RSI	BB Top	BB Bottom	S1	S2	R1	R2
BBCA	7,100	Trading	43.75	44.96	7,400	7,050	7,050	7,000	7,300	7,350
BTEL	380	Trading	57.14	58.00	385	377	374	367	387	394
KLBF	3,500	Trading	50.00	50.60	3,525	3,425	3,425	3,350	3,600	3,675
PGAS	4,025	OverSold	20.83	49.07	4,200	3,975	3,975	3,925	4,125	4,175
PTBA	20,800	StrongBuy	13.33	29.46	22,100	20,600	20,550	20,300	21,500	21,750
UNTR	21,800	OverSold	25.42	43.93	23,050	21,650	21,550	21,300	22,400	22,650



Tumbuhnya rasio volume perdagangan hingga 71% serta arus distribusi yang mencoba bergerak memasuki area positif, memberikan indikasi positif bagi BBCA untuk mencoba keluar dari area konsolidasi.

Ditutup melemah di area pivot support mengindikasikan akan berlanjutnya tekanan. Diharapkan support harga pada level 7.050, mampu menahan gempuran jual dan mendorong BBCA menguji resistensi 7.350.

S1	S2	R1	R2
7,050	7,000	7,300	7,350



Signal positif dari tumbuhnya rasio volume selama tiga hari berturut-turut serta indikasi golden cross pada stochastic, diharapkan mampu mendorong BTEL untuk bergerak menguji resistensi harga di level 390.

S1	S2	R1	R2
374	367	387	394



Indikasi signal positif golden cross stochastic, serta tumbuhnya rasio volume perdagangan.

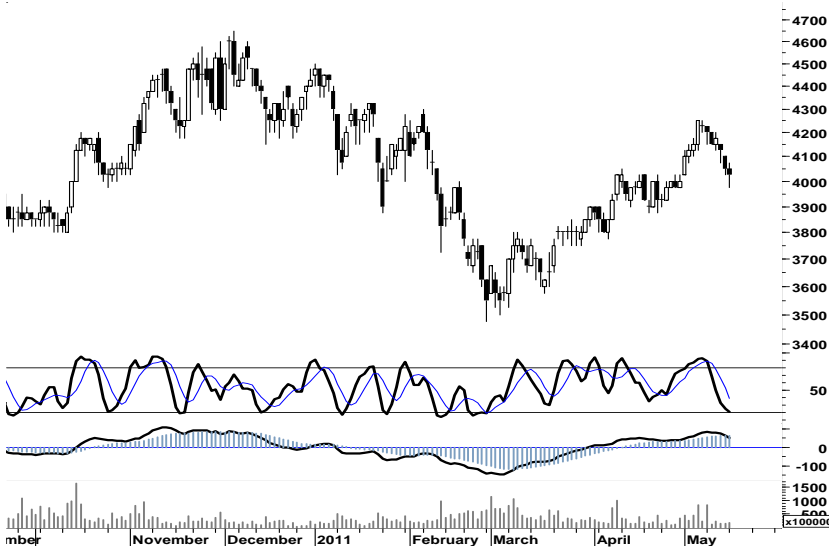
KLBF pada perdagangan hari ini diperkirakan akan mencoba menguji resistensi harga pada level 3.600.

S1	S2	R1	R2
3,425	3,350	3,600	3,675

PGAS

4,025

OverSold



Ditutup melemah di area pivot support trading 4.025, menempatkan PGAS berada pada kondisi berimbang.

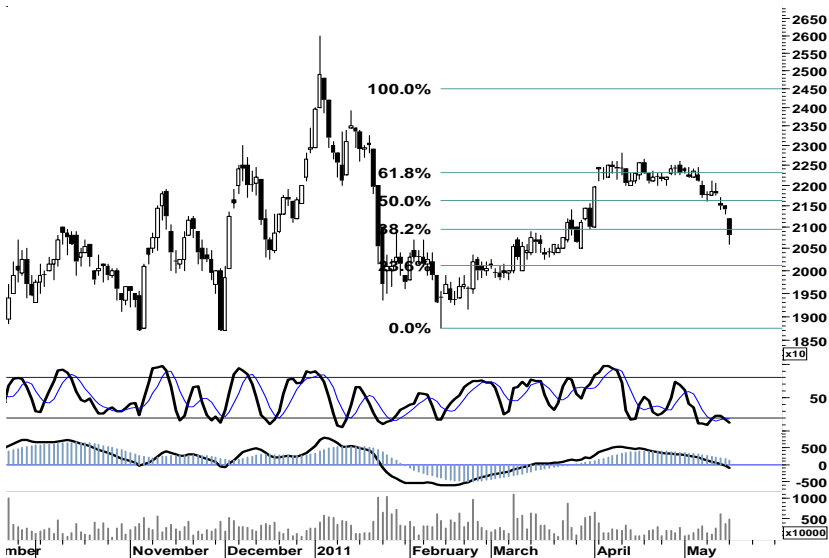
Dengan mewaspadai stop-loss trading di level 3.950, PGAS diperkirakan akan mencoba bergerak menguji resistensi 4.125.

S1	S2	R1	R2
3,975	3,925	4,125	4,175

PTBA

20,800

StrongBuy



Memiliki celah harga atas dalam interval 21.200 - 21.300, membuka peluang bagi PTBA untuk kembali pada area trading 20.950 - 21.600.

S1	S2	R1	R2
20,550	20,300	21,500	21,750

UNTR

21,800

OverSold



Dengan terbukanya celah harga dalam interval harga 22.100 - 22.300, memberikan peluang bagi PGAS untuk bertahan dalam teritori positif dan bergerak dalam kisaran support 21.300 - 22.400.

S1	S2	R1	R2
21,550	21,300	22,400	22,650

TRADE DATA

JCI (IHSG) 3,799.2 -32.8 -0.86%

YTD (Rp)	2.6%	Volume (m) :	4,922
YTD (USD)	7.4%	Nilai (Rpbn) :	3,748
Moving Avg 20day	3,800	Mkt Cap (Rptr) :	3,381
Moving Avg 50day	3,695	Market P/E (x) :	16.0
Moving Avg 200day	3,519	Market Div. Yield (%) :	2.5

Indonesia & Sectors +/- (%) YTD (%)

MSCI Indonesia	4,711.3	-43.8	-0.92	3.62
JII	524.9	-3.6	-0.67	-1.50
LQ45	676.1	-6.3	-0.92	2.23
JAKFIN Index	495.7	-7.3	-0.01	6.22
JAKINFR Index	796.4	-1.3	-0.00	-2.78
JAKMINE Index	3,204.3	-47.4	-0.01	-2.13
JAKCONS Index	1,131.1	-0.6	-0.00	3.33
JAKTRAD Index	493.3	-9.3	-0.02	4.06
JAKMIND Index	1,072.3	10.0	0.01	10.89
JAKBIND Index	394.6	-4.1	-0.01	1.90
JAKPROP Index	210.1	-2.6	-0.01	3.47
JAKAGRI Index	2,265.0	-13.5	-0.01	-0.85

Commodities +/- (%) YTD (%)

CRB Index	336.48	-0.3	-0.09	1.11
Oil & Gas				
Crude Oil	96.91	-0.5	-0.47	6.05
Natural Gas	4.18	-0.1	-3.15	-5.06
COAL (Rotterdam)	122.20	0.7	0.53	-7.00
COAL (Amsterdam)	122.60	0.0	0.00	-2.66
COAL (Australia,wk)	117.15	-3.7	-3.06	-4.29
Industrial Metals				
Aluminium	2,484.5	-48.3	-1.91	1.03
Nickel	24,150	-205	-0.84	-2.42
Tin	27,875	-125	-0.45	3.62
Precious Metal				
Gold	1,480.00	-10.6	-0.71	4.12
Silver	33.49	-0.6	-1.88	8.35
Soft Commodities				
CPO (Malaysia)	3,389.00	0.0	0.00	-11.14
CPO (Netherlands)	1,150.00	-5.0	-0.43	-10.51
Rubber	5,011.05	26.5	0.53	0.34
Corn	720.25	22.8	3.26	14.51
Wheat	764.00	27.5	3.73	-3.81
Soybeans	1,341.00	14.5	1.09	-3.78
Rice (Indonesia)	6,750.00	0.0	0.00	-4.93

Winners

Stock	Price	(%)
FAST	10,450	4.50
ADMF	14,300	4.38
GJTL	3,000	4.35
BHIT	174	3.57
KLBF	3,500	2.19
MEGA	3,575	2.14
ASII	59,050	0.94
GGRM	44,150	0.91
EXCL	6,550	0.77
BYAN	16,950	0.30

Losers

Stock	Price	(%)
DSSA	18,500	-9.54
BORN	1,550	-4.91
UNTR	21,800	-2.90
PTBA	20,800	-2.80
BBCA	7,100	-2.74
ITMG	44,700	-2.72
INTP	16,350	-1.80
BBRI	6,150	-1.60
BUMI	3,475	-1.42
BMRI	7,050	-1.40

Regional Indices +/- (%) YTD (%)

MXWO	MSCI World	1,329.3	-7.3	-0.55	3.85
SPX	S&P 500	1,329.0	-0.5	-0.04	5.67
US					
Dow Jones Industrial		12,479.6	-68.8	-0.55	7.79
Nasdaq	US	2,783.2	0.9	0.03	4.91
Europe					
EURO 50	Europe	277.3	-2.9	-1.02	0.53
FTSE	London	5,861.0	-62.7	-1.06	-0.66
DAX	Germany	7,256.7	-130.9	-1.77	4.95
CAC	France	3,941.6	-48.2	-1.21	3.60
SMI	Swiss	6,496.6	-67.6	-1.03	0.94
BRIC					
BOVESPA	Brazil	63,673.3	843.7	1.34	-8.13
MICEX	Russia	1,608.7	-14.3	-0.88	-4.70
SENSEX	India	18,137.4	-207.7	-1.13	-11.56
NIFTY	India	5,439.0	-60.1	-1.09	-11.34
SHCOMP	China	2,852.8	3.7	0.13	1.59
SZCOMP	China	1,197.0	-1.7	-0.14	-7.27

Developed ASIA

Nikkei	Japan	9,567.0	8.7	0.09	-6.47
TPX	Japan	828.9	-0.7	-0.08	-7.78
HIS	Hong kong	22,901.1	-59.5	-0.26	-0.58
KOSPI	S. Korea	2,102.4	-1.8	-0.08	2.51
TAIEX	Taiwan	8,884.1	-27.6	-0.31	-0.99
FSSTI	Singapore	3,136.5	0.0	0.00	-1.68

ASEAN

SET	Thailand	1,085.0	0.0	0.00	5.05
PCOMP	Philippines	4,261.6	-39.2	-0.91	1.44
KLCI	Malaysia	1,536.3	0.0	0.00	1.14
VNINDEX	Vietnam	464.4	-7.1	-1.51	-4.19

Currency +/- (%) YTD (%)

EURUSD	Euro	1.424	0.008	0.57	6.37
GBPUSD	United Kingdom	1.625	0.006	0.37	4.10
USDCHE	Switzerland	0.880	-0.005	-0.51	-5.89
USDCAD	Canada	0.972	-0.004	-0.38	-2.60
AUDUSD	Australia	1.063	0.007	0.67	3.85
NZDUSD	New Zealand	0.785	0.005	0.67	0.60
USDJPY	Japan	81.4	0.630	0.78	0.37
USDCNY	China	6.506	-0.002	-0.03	-1.53
USDHKD	Hongkong	7.774	-0.003	-0.04	0.01
USDSGD	Singapore	1.246	-0.005	-0.41	-2.94
Rupiah	Indonesia	8,578.0	-1.000	-0.01	-4.65

Value (Rpbn)

BUMI	240,594
BMRI	208,586
ITMG	178,253
BBRI	155,686
BORN	147,729
ASII	112,529
INDY	107,080
ENRG	104,617
ELTY	103,462
PTBA	103,016

Volume (Lot)

BNBR	1,672,057
ELTY	1,234,251
ENRG	1,051,359
DEWA	711,077
BHIT	421,803
TRUB	301,069
BKSL	268,261
BORN	190,017
MIRA	165,432
TRAM	163,673

Freq

ENRG	4,243
BORN	3,832
ELTY	3,553
BHIT	2,882
DEWA	2,716
MYTX	2,625
MYTX	2,625
BNBR	2,460
ITMG	2,426
BBRI	2,101

Code	Last	Ytd Chg(%)	H-5 Chg (%)	Rekomendasi	STO	RSI	MACD	Bollinger Band		Support			Resistance			H-5	
								Top	Bottom	1	2	3	1	2	3	Highest	Lowest
AALI	23,600	-11.94	-0.63	OverSold	21.3	55.9	260.7	24,050	23,300	23,450	23,300	23,150	23,750	23,900	24,050	24,200	23,450
ACES	2,700	-5.26	2.86	StrongSell	88.9	64.3	26.7	2,725	2,675	2,700	2,700	2,700	2,700	2,700	2,700	2,700	2,625
ADRO	2,250	-15.89	-3.23	OverSold	30.8	46.1	(1.2)	2,350	2,225	2,225	2,200	2,175	2,275	2,300	2,325	2,325	2,200
AKRA	1,620	-4.71	-0.61	OverSold	36.8	54.6	20.4	1,630	1,600	1,600	1,570	1,560	1,640	1,650	1,680	1,640	1,580
ANTM	2,200	-11.11	0.00	Trading	44.4	41.1	(18.9)	2,275	2,175	2,200	2,175	2,175	2,225	2,225	2,250	2,250	2,175
ASII	59,050	8.55	4.70	TakeProfit	72.4	63.2	688.2	60,250	57,000	58,550	58,050	57,550	59,550	60,050	60,550	59,500	56,300
BBCA	7,100	10.08	-1.39	Trading	43.8	45.0	22.1	7,400	7,050	7,050	7,000	6,900	7,200	7,300	7,350	7,350	7,050
BBNI	3,875	1.97	-0.64	OverSold	35.7	42.9	(5.9)	3,975	3,875	3,850	3,825	3,775	3,925	3,975	4,000	3,975	3,850
BBRI	6,150	18.84	0.82	OverBought	66.7	48.8	63.9	6,350	6,100	6,050	5,950	5,850	6,250	6,350	6,450	6,300	6,000
BBTN	1,650	-1.20	-0.60	OverSold	36.0	45.2	(0.9)	1,720	1,640	1,640	1,630	1,610	1,670	1,690	1,700	1,720	1,640
BDMN	6,050	10.00	0.83	Trading	58.3	39.5	(92.6)	6,150	6,000	6,050	6,000	5,950	6,150	6,200	6,250	6,150	5,950
BISI	1,610	-13.90	0.00	Trading	52.6	45.8	(13.3)	1,680	1,600	1,600	1,580	1,560	1,640	1,660	1,680	1,690	1,550
BMRI	7,050	9.30	2.17	StrongSell	81.0	53.3	100.1	7,200	7,000	6,950	6,850	6,750	7,150	7,250	7,350	7,150	6,800
BSDE	910	3.41	0.00	StrongSell	87.5	55.1	17.8	945	905	900	890	880	920	930	940	930	870
BTEL	380	61.70	-1.30	Trading	57.1	58.0	4.9	385	377	374	367	364	384	387	394	385	370
BUMI	3,475	11.20	-2.11	OverSold	23.5	54.6	74.5	3,650	3,425	3,450	3,400	3,350	3,550	3,600	3,650	3,625	3,450
CTRA	425	21.43	13.33	StrongSell	92.7	66.1	12.0	461	388	415	405	395	435	445	455	435	365
ELTY	165	2.48	11.49	StrongSell	80.6	73.9	5.4	175	151	162	159	154	170	175	178	172	145
EXCL	6,550	24.76	4.80	StrongSell	95.2	61.4	136.5	6,650	6,300	6,500	6,450	6,400	6,600	6,650	6,700	6,600	6,150
GGRM	44,150	7.55	8.48	StrongSell	87.6	72.4	371.7	45,650	40,000	43,450	42,750	42,250	44,650	45,150	45,850	44,450	40,500
HEXA	6,250	-13.79	0.00	OverBought	68.8	56.1	123.7	6,600	6,250	6,200	6,150	6,000	6,400	6,550	6,600	6,550	6,000
INCO	4,800	-3.52	-0.52	OverSold	33.3	44.7	2.9	4,925	4,775	4,775	4,750	4,700	4,850	4,900	4,925	4,925	4,775
INDF	5,600	13.13	0.00	OverSold	35.7	56.8	75.2	5,700	5,550	5,550	5,500	5,450	5,650	5,700	5,750	5,750	5,500
INDY	4,175	-18.14	0.60	Trading	45.5	59.9	35.1	4,225	4,075	4,125	4,075	4,000	4,250	4,325	4,375	4,275	4,050
INTP	16,350	1.87	-2.10	OverSold	25.0	44.1	64.3	17,100	16,250	16,200	16,050	15,800	16,600	16,850	17,000	17,100	16,300
ISAT	5,200	-4.59	-2.80	StrongBuy	16.7	43.0	(3.9)	5,350	5,200	5,200	5,200	5,150	5,250	5,300	5,300	5,400	5,200
ITMG	44,700	-17.68	-6.09	StrongBuy	10.6	34.7	(404.1)	47,950	44,000	44,200	43,700	43,000	45,400	46,100	46,600	48,000	44,400
JSMR	3,425	-3.52	0.00	Trading	54.5	57.1	25.8	3,500	3,400	3,400	3,375	3,325	3,475	3,525	3,550	3,475	3,375
KLBF	3,500	5.26	1.45	Trading	50.0	50.6	1.8	3,525	3,425	3,425	3,350	3,300	3,550	3,600	3,675	3,525	3,350
LSIP	2,375	-6.50	-1.04	OverSold	30.8	46.8	13.7	2,475	2,375	2,350	2,325	2,300	2,400	2,425	2,450	2,475	2,350
MYOR	11,700	8.33	3.08	TakeProfit	79.2	60.4	173.6	11,800	11,500	11,600	11,450	11,350	11,850	11,950	12,100	11,800	11,300
PGAS	4,025	-10.06	-4.17	OverSold	20.8	49.1	53.5	4,200	3,975	3,975	3,925	3,875	4,075	4,125	4,175	4,225	3,975
PTBA	20,800	-13.15	-4.37	StrongBuy	13.3	29.5	(114.8)	22,100	20,600	20,550	20,300	19,950	21,150	21,500	21,750	22,100	20,600
RALS	740	-13.95	0.00	OverBought	72.7	45.1	(12.1)	770	715	735	730	715	755	770	775	760	720
SGRO	3,400	4.62	0.00	OverSold	37.5	57.3	71.2	3,500	3,350	3,375	3,350	3,325	3,425	3,450	3,475	3,475	3,350
SMCB	2,025	-8.99	-5.81	StrongBuy	17.6	36.5	5.8	2,200	2,000	2,000	1,950	1,900	2,100	2,150	2,200	2,200	2,000
SMGR	9,300	-5.58	-1.06	Trading	43.8	46.0	(3.2)	9,400	9,300	9,250	9,150	9,050	9,450	9,550	9,650	9,450	9,200
SMRA	1,120	3.70	-0.88	OverSold	33.3	44.6	(1.0)	1,140	1,110	1,110	1,100	1,080	1,140	1,160	1,170	1,160	1,100
TINS	2,625	-7.89	-3.67	Accumulate	25.0	35.6	(17.2)	2,775	2,625	2,575	2,525	2,475	2,675	2,725	2,775	2,775	2,575
TLKM	7,700	-3.75	1.99	StrongSell	100.0	57.8	89.1	7,850	7,600	7,650	7,600	7,550	7,750	7,800	7,850	7,700	7,500
UNTR	21,800	-10.29	-3.10	OverSold	25.4	43.9	192.6	23,050	21,650	21,550	21,300	21,000	22,100	22,400	22,650	23,074	21,550
UNVR	14,800	-7.79	-1.00	Accumulate	22.7	31.3	(153.8)	15,050	14,800	14,700	14,550	14,450	14,950	15,050	15,200	15,150	14,650

S1 = Support 1 S2 = Support 2 S3 = Support 3
 R1 = Resisten 1 R2 = Resisten 2 R2 = Resisten 2
 STO = Stochastic Oscillator
 RSI = Relative Strength Index
 MACD = Moving Average Convergence Divergence
 H-5 = 5 hari sebelumnya

RESEARCH TEAM

Andrian Tanuwijaya	Equity Analyst	(andrian.tanuwijaya@trimegah.com)
Hanel Topada Era Tania	Equity Analyst	(hanel.tania@trimegah.com)
T Heldy Arifien	Technical Analyst	(heldy@trimegah.com)
Rovandi	Research Assistant	(rovandi@trimegah.com)

EQUITY CAPITAL MARKET TEAM

Nathanael Benny Prasetyo	Head of Retail ECM	(benny.prasetyo@trimegah.com)
Windra Djulnaily	Pluit, Jakarta	(windra.djulnaily@trimegah.com)
Ariawan Anwar	Artha Graha, Jakarta	(ariawan.anwar@trimegah.com)
Ferry Zabur	Kelapa Gading, Jakarta	(ferry.zabur@trimegah.com)
Wirjawan Joesoef	Mangga Dua, Jakarta	(iwan@trimegah.com)
Lukman Abdul Azis	Kebon Jeruk, Jakarta	(lukman@trimegah.com)
Tutik Suciati	Semarang, Jawa Tengah	(tuty.s@trimegah.com)
Sonny Muljadi	Surabaya, Jawa Timur	(sonny.muljadi@trimegah.com)
Ni Luh Ketut Sri Agustini	Denpasar, Bali	(sri.agustini@trimegah.com)
Philip Fernando Suwandi	Makassar, Sulawesi Selatan	(philip.fs@trimegah.com)
agus.jatmiko	Balikpapan, Kalimantan Timur	(agus.jatmiko@trimegah.com)
Asep Saepudin	Bandung, Jawa Barat	(asep.saepudin@trimegah.com)
Asep Saepudin	Cirebon, Jawa Barat	(asep.saepudin@trimegah.com)
Very Wijaya	Medan, Sumatera Utara	(very.wijaya@trimegah.com)
Tantie Rivi Watie	Pekanbaru, Riau	(tantierw@trimegah.com)
Agus Bambang Suseno	Solo, Jawa Tengah	(agus.suseno@trimegah.com)
Agus Bambang Suseno	Yogyakarta, Jawa Tengah	(agus.suseno@trimegah.com)
Donny Kristanto Setiadi	Palembang, Sumatra Selatan	(donny.kristanto@trimegah.com)
Sonny Muljadi	Malang, Jawa Timur	(sonny.muljadi@trimegah.com)

PT Trimegah Securities Tbk
18th Fl, Artha Graha Building
Jl. Jend. Sudirman Kav. 52-53
Jakarta 12190, INDONESIA
Tel : (6221) 2924 9088 Fax : (6221) 2924 9163

DISCLAIMER

This report has been prepared by PT Trimegah Securities Tbk on behalf of itself and its affiliated companies and is provided for information purposes only. Under no circumstances is it to be used or considered as an offer to sell, or a solicitation of any offer to buy. This report has been produced independently and the forecasts, opinions and expectations contained herein are entirely those of Trimegah Securities.

While all reasonable care has been taken to ensure that information contained herein is not untrue or misleading at the time of publication, Trimegah Securities makes no representation as to its accuracy or completeness and it should not be relied upon as such. This report is provided solely for the information of clients of Trimegah Securities who are expected to make their own investment decisions without reliance on this report. Neither Trimegah Securities nor any officer or employee of Trimegah Securities accept any liability whatsoever for any direct or consequential loss arising from any use of this report or its contents. Trimegah Securities and/or persons connected with it may have acted upon or used the information herein contained, or the research or analysis on which it is based, before publication. Trimegah Securities may in future participate in an offering of the company's equity securities.