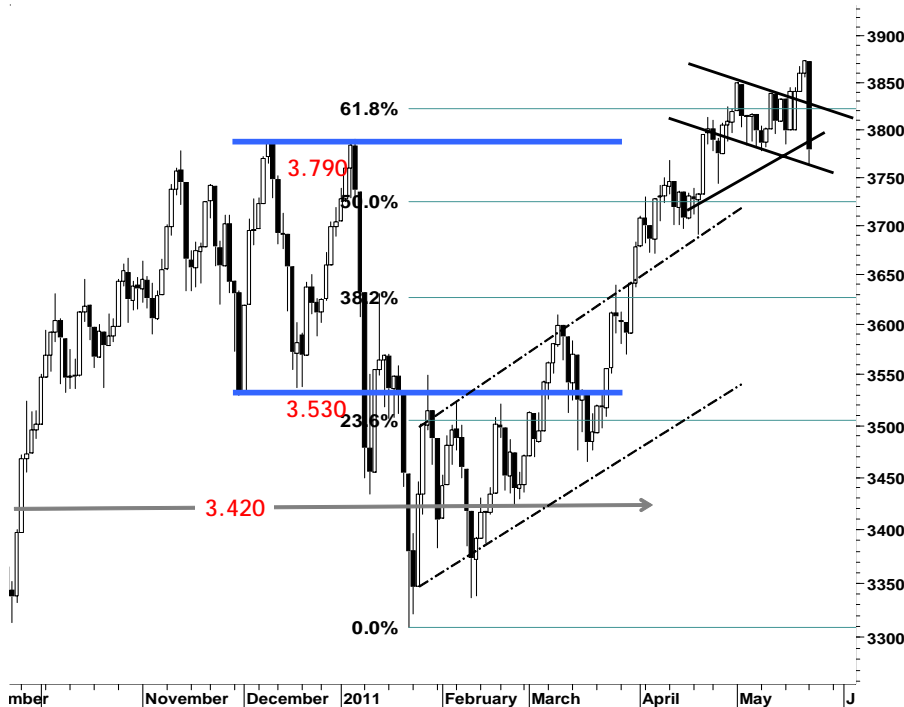


IHSG 3.778,5 94,5 2,44%

Ulisan Pasar

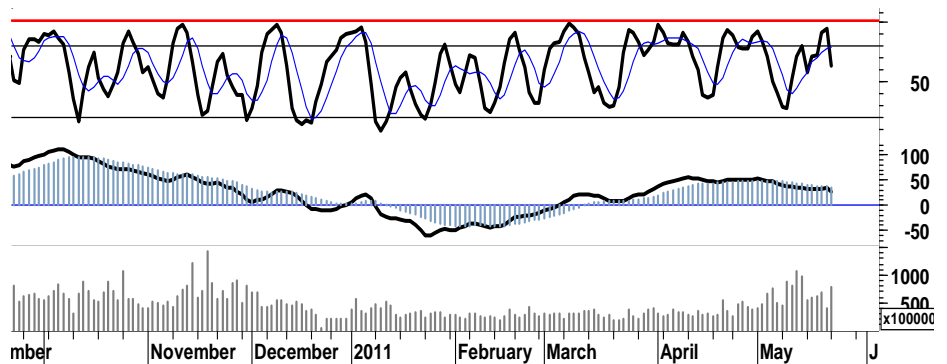


Didera sentimen negatif Yunani dan Spanyol serta kekhawatiran akan prospek pertumbuhan ekonomi di Amerika Serikat, mayoritas indeks bursa asia pacific mengalami tekanan pelemahan rata-rata lebih dari 2%. Demikian halnya dengan IHSG yang juga tak luput dari gempuran tekanan jual di hampir seluruh lini, diikuti oleh para pelaku asing yang mencatat nilai penjualan bersih sebesar Rp673miliar.

IHSG pada perdagangan kemarin ditutup terpuruk 2,4% di level 3.778, dengan rasio volume penjualan tercatat sebesar 29% setelah terbentuk dead-cross pada stochastic yang membawa IHSG terpuuk melemah keluar dari area overbought memasuki zona negatif.

Untuk dapat bertahan dan tetap dalam uptrend channel-nya, IHSG diharapkan mampu untuk kembali melakukan reverse pada basis support 3.720 - 3.725 atau fibonacci ratio 50% dengan stop-loss level 3.680.

Ditengah bayang-bayang isue negatif dan potensi berlanjutnya tekanan jual, IHSG masih harus menguji kekuatan basis support tersebut di atas. Dengan demikian kami perkirakan IHSG pada perdagangan hari ini akan mencoba bergerak mix-negatif, dalam interval harga 3.690 - 3.840



S1	S2	R1	R2
3,740	3,700	3,850	3,915

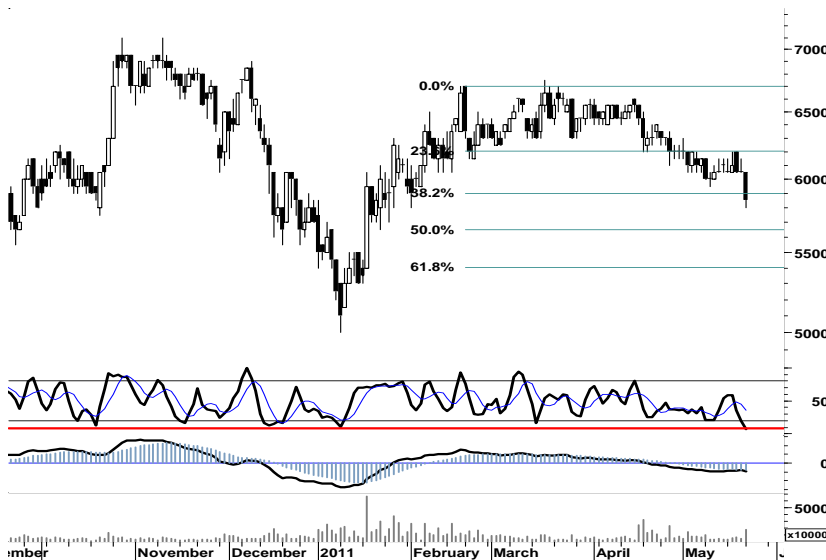
Saham Pilihan

Saham	Harga (Rp)	Rekomendasi	Stochastic	RSI	BB Top	BB Bottom	S1	S2	R1	R2
AALI	23,150	Trading	57.63	46.91	24,200	23,050	22,500	21,850	24,250	24,900
BDMN	5,850	Trading Buy	7.14	30.54	6,200	5,850	5,750	5,650	6,150	6,250
BISI	1,550	Trading Buy	12.00	39.85	1,660	1,530	1,530	1,510	1,610	1,630
BSDE	900	OverSold	21.43	51.46	930	885	890	875	915	930
TLKM	7,550	OverSold	25.00	52.28	7,800	7,500	7,500	7,450	7,650	7,700
UNTR	22,000	Trading	48.65	47.41	22,650	21,700	21,850	21,700	22,400	22,550



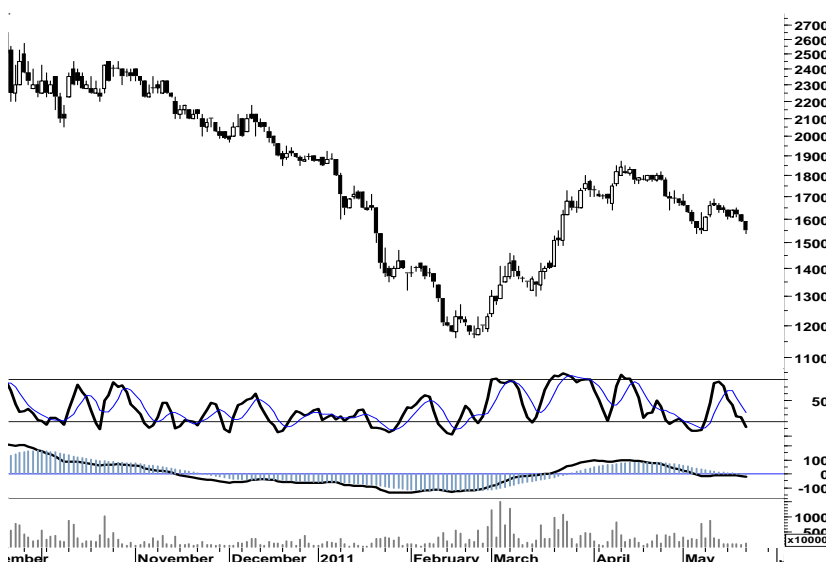
Dengan tetap mewaspadai potensi berlanjutnya tekanan menguji support 22.500, akumulasi pembelian yang terjadi pada akhir sesi kemarin serta celah harga yang tersisa pada level 23.600 - 23.900 membuka peluang bagi AALI untuk melakukan swing positif dalam interval 22.800 - 24.000.

S1	S2	R1	R2
22,500	21,850	24,250	24,900



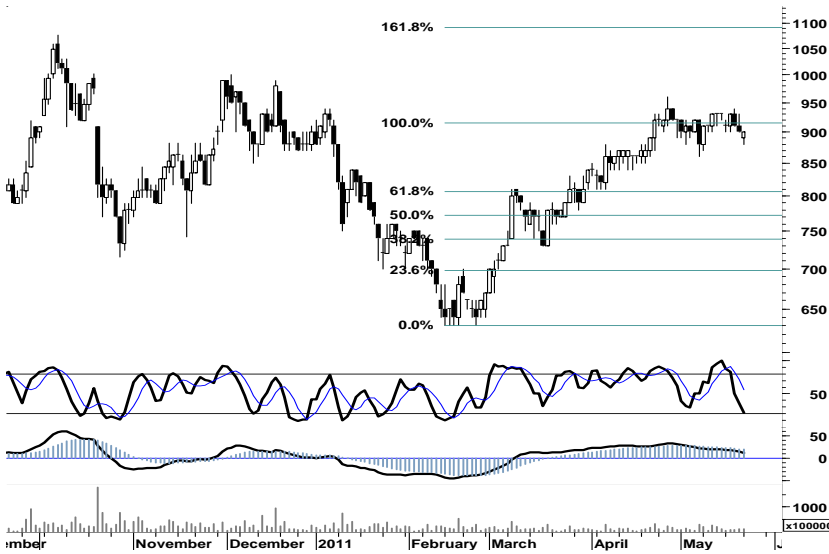
Tekanan pelemahan yang telah membawa BDMN mencapai area oversold terendah di level 7,14, membuka peluang untuk melakukan technical rebound menguji penetrasi resistensi harga 6,150.

S1	S2	R1	R2
5,750	5,650	6,150	6,250



Dengan memperketat stop-loss pada level support penentu 1.550, berada pada area oversold dan terbatasnya ruang tekanan pelemahan, membuka peluang bagi BISI untuk kembali ke dalam zona hijau dan bergerak mix-positif di area 1.530 - 1.610.

S1	S2	R1	R2
1,530	1,510	1,610	1,630



Perlawanan tekanan beli di akhir sesi kemarin, membawa BSDE kembali pada zona positif perdagangan.

Terbatasnya ruang pelemahan pada stochastic, membuka peluang bagi BSDE untuk bergerak positif dalam interval 890 - 915.

S1	S2	R1	R2
890	875	915	930



Sebagaimana saham-saham unggulan lain, untuk dapat bertahan dalam uptrend-channel TLKM harus mampu bertopang pada trend support harga 7.550.

Terbatasnya ruang pelemahan, akumulasi pembelian dapat dilakukan pada saat TLKM menguji support-support 7.450 - 7.500.

S1	S2	R1	R2
7,500	7,450	7,650	7,700



Mewaspadaai potensi berlanjutnya tekanan pelemahan seiring munculnya indikasi dead-cross pada stochastic, UNTR memiliki peluang untuk bergerak mix-positif dalam interval harga 21.700 - 22.100.

S1	S2	R1	R2
21,850	21,700	22,400	22,550

TRADE DATA

JCI (IHSG) 3,778.5 -94.5 -2.44%

YTD (Rp)	2.0%	Volume (m) :	7,595
YTD (USD)	6.7%	Nilai (Rpbn) :	5,550
Moving Avg 20day	3,815	Mkt Cap (Rptr) :	3,365
Moving Avg 50day	3,715	Market P/E (x) :	16.1
Moving Avg 200day	3,535	Market Div. Yield (%) :	2.5

Indonesia & Sectors +/- (%) YTD (%)

MSCI Indonesia	4,696.7	-136.8	-2.83	3.30
JII	524.3	-13.2	-2.46	-1.62
LQ45	673.4	-18.4	-2.67	1.82
JAKFIN Index	494.4	-14.0	-0.03	5.95
JAKINFR Index	779.9	-15.1	-0.02	-4.80
JAKMINE Index	3,187.3	-84.1	-0.03	-2.65
JAKCONS Index	1,119.9	-17.0	-0.01	2.30
JAKTRAD Index	495.3	-7.3	-0.01	4.47
JAKMIND Index	1,073.1	-45.7	-0.04	10.97
JAKBIND Index	398.5	-9.1	-0.02	2.90
JAKPROP Index	203.3	-5.4	-0.03	0.09
JAKAGRI Index	2,281.2	-77.4	-0.03	-0.14

Commodities +/- (%) YTD (%)

CRB Index	336.88	-4.7	-1.37	1.23
Oil & Gas				
Crude Oil	97.70	-1.8	-1.80	6.92
Natural Gas	4.35	0.1	2.74	-1.34
COAL (Rotterdam)	120.90	-1.6	-1.31	-7.99
COAL (Amsterdam)	122.60	-0.3	-0.21	-2.66
COAL (Australia,wk)	117.10	-0.1	-0.04	-4.33
Industrial Metals				
Aluminium	2,459.0	-23.5	-0.95	-0.01
Nickel	22,395	-1,145	-4.86	-9.52
Tin	26,725	-1,025	-3.69	-0.65
Precious Metal				
Gold	1,515.40	6.5	0.43	6.61
Silver	34.90	-0.2	-0.52	12.92
Soft Commodities				
CPO (Malaysia)	3,443.00	-34.0	-0.98	-9.73
CPO (Netherland)	1,130.00	-40.0	-3.42	-12.06
Rubber	4,828.68	-84.4	-1.72	-3.31
Corn	754.00	-5.5	-0.72	19.87
Wheat	803.00	-3.5	-0.43	1.10
Soybeans	1,373.75	-6.5	-0.47	-1.43
Rice (Indonesia)	6,750.00	0.0	0.00	-4.93

Winners

Stock	Price	(%)	Stock	Price	(%)
KAEF	220	14.58	KLBF	3,325	-5.00
TOTO	38,000	11.76	BUMI	3,350	-4.96
BULL	166	7.10	BBRI	6,250	-4.58
PJAA	810	5.19	ASII	59,200	-4.52
EMTK	1,620	2.53	INDF	5,400	-4.42
MEGA	3,575	2.14	BBNI	3,825	-3.16
MBAI	24,950	2.04	PGAS	3,900	-2.50
SCMA	4,600	1.10	BMRI	7,100	-2.07
MNCN	940	1.08	BBCA	7,150	-2.05
ICBP	5,350	0.94	TLKM	7,550	-1.31

Losers

Stock	Price	(%)	Stock	Price	(%)
KLBF	3,325	-5.00	BBRI	6,250	-4.58
BUMI	3,350	-4.96	ASII	59,200	-4.52
BBRI	6,250	-4.58	INDF	5,400	-4.42
ASII	59,200	-4.52	BBNI	3,825	-3.16
INDF	5,400	-4.42	PGAS	3,900	-2.50
BBNI	3,825	-3.16	BMRI	7,100	-2.07
PGAS	3,900	-2.50	BBCA	7,150	-2.05
BMRI	7,100	-2.07	TLKM	7,550	-1.31
BBCA	7,150	-2.05			
TLKM	7,550	-1.31			

Regional Indices +/- (%) YTD (%)

MXWO	MSCI Word	1,313.7	-23.0	-1.72	2.63
SPX	S&P 500	1,317.4	-15.9	-1.19	4.75
US					
Dow Jones Industrial		12,381.3	-130.8	-1.05	6.94
Nasdaq	US	2,758.9	-44.4	-1.58	4.00
Europe					
EURO 50	Europe	274.8	-4.9	-1.74	-0.37
FTSE	London	5,835.9	-112.6	-1.89	-1.09
DAX	German	7,121.5	-145.3	-2.00	3.00
CAC	France	3,907.0	-83.9	-2.10	2.69
SMI	Swiss	6,437.8	-92.8	-1.42	0.03
BRIC					
BOVESPA	Brazil	62,345.2	-251.3	-0.40	-10.04
MICEX	Russia	1,573.1	-30.8	-1.92	-6.80
SENSEX	India	17,993.3	-332.8	-1.82	-12.27
NIFTY	India	5,386.6	-99.8	-1.82	-12.19
SHCOMP	China	2,774.6	-83.9	-2.93	-1.19
SZCOMP	China	1,149.4	-43.3	-3.63	-10.96

Developed ASIA

Nikkei	Japan	9,460.6	-146.5	-1.52	-7.51
TPX	Japan	817.7	-10.1	-1.22	-9.03
HIS	Hong kong	22,711.0	-488.4	-2.11	-1.41
KOSPI	S.Korea	2,055.7	-55.8	-2.64	0.23
TAIEX	Taiwan	8,747.5	-89.5	-1.01	-2.51
FSSTI	Singapore	3,110.5	-58.1	-1.83	-2.49

ASEAN

SET	Thailand	1,054.0	-19.0	-1.77	2.05
PCOMP	Philippines	4,263.2	-22.0	-0.51	1.48
KLCI	Malaysia	1,529.0	-12.1	-0.78	0.66
VNINDEX	Vietnam	417.8	-15.1	-3.48	-13.79

Currency +/- (%) YTD (%)

EURUSD	Euro	1.405	-0.011	-0.80	4.96
GBPUSD	United Kingdom	1.612	-0.011	-0.65	3.27
USDCHF	Switzerland	0.884	0.006	0.73	-5.50
USDCAD	Canada	0.978	0.004	0.38	-2.01
AUDUSD	Australia	1.051	-0.016	-1.45	2.66
NZDUSD	New Zealand	0.790	-0.006	-0.72	1.29
USDJPY	Japan	82.0	0.310	0.38	1.10
USDCNY	China	6.507	0.015	0.23	-1.52
USDHKD	Hongkong	7.779	0.004	0.06	0.07
USDSGD	Singapore	1.249	0.011	0.85	-2.69
Rupiah	Indonesia	8,593.0	57.000	0.67	-4.48

Value (Rpbn) Volume (Lot) Freq (x)

BBRI	355,056	BNBR	3,113,797	BORN	5,642
BUMI	349,706	BULL	1,299,728	BBRI	4,456
ASII	241,121	ENRG	1,183,445	BUMI	3,901
INDF	239,876	ELTY	1,040,750	ENRG	3,601
BMRI	168,482	DEWA	602,813	BNBR	3,484
BORN	163,572	BRAU	557,719	BULL	3,369
ADRO	155,903	TRUB	375,754	ELTY	3,312
BRAU	150,641	BORN	222,342	INDF	3,194
BNBR	123,213	BLTA	206,751	MNCN	2,404
BULL	109,621	BUMI	206,266	ANTM	2,318

Code	Last	Ytd Chg(%)	H-5 Chg (%)	Rekomendasi	STO	RSI	MACD	Bollinger Band		Support			Resistance			H-5	
								Top	Bottom	1	2	3	1	2	3	Highest	Lowest
AALI	23,150	-13.62	-2.11	Trading	57.6	46.9	198.1	24,200	23,050	22,500	21,850	21,300	23,700	24,250	24,900	24,150	22,400
ACES	2,650	-7.02	-1.85	Trading	50.0	51.3	19.6	2,750	2,600	2,650	2,650	2,650	2,650	2,650	2,650	2,700	2,600
ADRO	2,325	-13.08	2.20	OverBought	79.2	52.9	16.9	2,450	2,275	2,300	2,275	2,250	2,350	2,375	2,400	2,400	2,200
AKRA	1,650	-2.94	3.13	OverBought	71.8	56.8	26.1	1,720	1,620	1,620	1,590	1,560	1,680	1,710	1,740	1,710	1,580
ANTM	2,150	-13.13	-2.27	Trading	41.7	36.1	(21.4)	2,250	2,150	2,100	2,050	2,000	2,200	2,250	2,300	2,250	2,100
ASII	59,200	8.82	1.20	OverBought	70.8	57.4	1,179.4	62,700	58,100	58,200	57,150	55,750	60,650	62,050	63,100	62,150	58,150
BBCA	7,150	10.85	-2.05	Trading	52.4	48.0	9.9	7,400	7,100	7,050	6,950	6,850	7,250	7,350	7,450	7,400	7,050
BBNI	3,825	0.66	-2.55	Trading	52.9	41.6	(8.6)	4,000	3,825	3,800	3,750	3,700	3,900	3,950	4,000	3,975	3,800
BBRI	6,250	20.77	0.00	StrongSell	80.0	51.7	85.7	6,750	6,100	6,150	6,000	5,850	6,450	6,600	6,750	6,550	6,050
BBTN	1,620	-2.99	-2.99	OverSold	31.6	41.8	(6.5)	1,700	1,610	1,610	1,600	1,570	1,650	1,680	1,690	1,690	1,620
BDMN	5,850	6.36	-4.10	Trading Buy	7.1	30.5	(95.3)	6,200	5,850	5,750	5,650	5,500	6,000	6,150	6,250	6,200	5,800
BISI	1,550	-17.11	-5.49	Trading Buy	12.0	39.8	(21.6)	1,660	1,530	1,530	1,510	1,480	1,580	1,610	1,630	1,660	1,540
BMRI	7,100	10.08	-0.70	OverBought	75.0	54.5	97.1	7,350	7,000	7,000	6,900	6,800	7,200	7,300	7,400	7,300	6,950
BSDE	900	2.27	-3.23	OverSold	21.4	51.5	11.6	930	885	890	875	870	910	915	930	940	880
BTEL	370	57.45	-2.63	OverSold	30.0	44.9	2.0	382	367	365	360	355	375	380	385	385	365
BUMI	3,350	7.20	-4.96	Trading	42.1	43.3	41.7	3,600	3,350	3,325	3,275	3,200	3,450	3,525	3,575	3,550	3,350
CTRA	400	14.29	-8.05	OverSold	29.2	53.9	10.6	430	391	390	380	370	410	420	430	435	390
ELTY	160	-0.62	-5.33	Trading	45.9	56.2	7.2	182	156	156	152	145	167	174	178	182	159
EXCL	6,350	20.95	-2.31	OverSold	25.0	52.7	125.5	6,700	6,300	6,250	6,150	6,000	6,500	6,650	6,750	7,000	6,250
GGRM	43,700	6.46	-0.11	TakeProfit	70.2	64.9	725.3	44,650	43,300	43,150	42,600	42,300	44,000	44,300	44,850	44,900	40,800
HEXA	6,400	-11.72	-1.54	OverBought	69.6	56.4	171.8	7,000	6,100	6,300	6,200	6,050	6,550	6,700	6,800	6,850	6,000
INCO	4,825	-3.02	0.00	OverBought	63.2	48.4	5.5	4,975	4,775	4,800	4,775	4,725	4,875	4,925	4,950	4,950	4,775
INDF	5,400	9.09	-4.42	Trading	50.0	44.3	54.0	5,850	5,400	5,250	5,100	4,900	5,600	5,800	5,950	5,750	5,250
INDY	3,975	-22.06	-4.22	OverSold	32.3	42.3	22.4	4,275	3,950	3,925	3,850	3,750	4,100	4,200	4,275	4,275	3,950
INTP	17,000	5.92	2.10	OverBought	72.2	56.5	84.6	17,550	16,250	16,800	16,600	16,400	17,200	17,400	17,600	17,250	16,300
ISAT	5,200	-4.59	-0.95	OverBought	66.7	43.6	(5.2)	5,450	5,150	5,200	5,150	5,100	5,300	5,350	5,400	5,350	5,200
ITMG	46,250	-14.83	0.65	StrongSell	81.8	45.1	(422.9)	48,150	44,650	46,000	45,700	45,250	46,750	47,200	47,500	47,200	44,400
JSMR	3,425	-3.52	0.00	Trading	46.7	54.9	30.0	3,525	3,400	3,400	3,375	3,350	3,450	3,475	3,500	3,525	3,400
KLBF	3,325	0.00	-2.92	Trading	42.4	39.6	(5.2)	3,625	3,300	3,200	3,075	2,925	3,475	3,625	3,750	3,600	3,225
LSIP	2,350	-7.48	-3.09	OverSold	35.7	45.3	2.7	2,425	2,350	2,300	2,250	2,200	2,400	2,450	2,500	2,450	2,300
MYOR	11,700	8.33	0.43	Trading	45.0	57.0	174.3	12,050	11,650	11,650	11,600	11,500	11,800	11,900	11,950	12,300	11,550
PGAS	3,900	-12.85	-3.70	StrongBuy	18.2	40.8	11.9	4,050	3,900	3,900	3,875	3,850	3,950	3,975	4,000	4,100	3,900
PTBA	20,900	-12.73	-2.34	Trading	46.2	36.1	(228.6)	21,200	20,800	20,750	20,600	20,400	21,100	21,300	21,450	21,500	20,600
RALS	750	-12.79	-1.32	OverBought	69.2	48.1	(4.7)	780	740	740	730	720	760	770	780	770	730
SGRO	3,375	3.85	-0.74	OverSold	38.9	53.0	58.0	3,525	3,375	3,350	3,300	3,225	3,475	3,550	3,600	3,525	3,375
SMCB	2,050	-7.87	-2.38	OverBought	75.0	43.2	0.0	2,250	2,000	2,025	2,000	1,925	2,125	2,200	2,225	2,175	2,000
SMGR	9,650	-2.03	3.21	StrongSell	86.2	61.1	63.6	9,950	9,350	9,600	9,550	9,450	9,750	9,850	9,900	9,800	9,250
SMRA	1,090	0.93	-3.54	OverSold	27.8	40.1	(8.7)	1,140	1,090	1,080	1,070	1,050	1,110	1,130	1,140	1,160	1,080
TINS	2,625	-7.89	-2.78	OverBought	63.2	39.2	(24.4)	2,750	2,600	2,575	2,525	2,475	2,675	2,725	2,775	2,725	2,575
TLKM	7,550	-5.63	-1.95	OverSold	25.0	52.3	81.8	7,800	7,500	7,500	7,450	7,400	7,600	7,650	7,700	7,800	7,500
UNTR	22,000	-9.47	-2.00	Trading	48.6	47.4	100.2	22,650	21,700	21,850	21,700	21,500	22,200	22,400	22,550	22,700	21,550
UNVR	14,850	-7.48	-0.34	Trading	58.6	39.7	(101.7)	15,100	14,800	14,800	14,750	14,650	14,950	15,050	15,100	15,150	14,650

S1 = Support 1 S2 = Support 2 S3 = Support 3
 R1 = Resisten 1 R2 = Resisten 2 R2 = Resisten 2
 STO = Stochastic Oscillator
 RSI = Relative Strength Index
 MACD = Moving Average Convergence Divergence
 H-5 = 5 hari sebelumnya

RESEARCH TEAM

Andrian Tanuwijaya	Equity Analyst	(andrian.tanuwijaya@trimegah.com)
Hanel Topada Era Tania	Equity Analyst	(hanel.tania@trimegah.com)
T Heldy Arifien	Technical Analyst	(heldy@trimegah.com)
Rovandi	Research Assistant	(rovandi@trimegah.com)

EQUITY CAPITAL MARKET TEAM

Nathanael Benny Prasetyo	Head of Retail ECM	(benny.prasetyo@trimegah.com)
Windra Djulnaily	Pluit, Jakarta	(windra.djulnaily@trimegah.com)
Ariawan Anwar	Artha Graha, Jakarta	(ariawan.anwar@trimegah.com)
Ferry Zabur	Kelapa Gading, Jakarta	(ferry.zabur@trimegah.com)
Wirjawan Joesoef	Mangga Dua, Jakarta	(iwan@trimegah.com)
Lukman Abdul Azis	Kebon Jeruk, Jakarta	(lukman@trimegah.com)
Tutik Suciati	Semarang, Jawa Tengah	(tuty.s@trimegah.com)
Sonny Muljadi	Surabaya, Jawa Timur	(sonny.muljadi@trimegah.com)
Ni Luh Ketut Sri Agustini	Denpasar, Bali	(sri.agustini@trimegah.com)
Philip Fernando Suwandi	Makassar, Sulawesi Selatan	(philip.fs@trimegah.com)
agus.jatmiko	Balikpapan, Kalimantan Timur	(agus.jatmiko@trimegah.com)
Asep Saepudin	Bandung, Jawa Barat	(asep.saepudin@trimegah.com)
Asep Saepudin	Cirebon, Jawa Barat	(asep.saepudin@trimegah.com)
Very Wijaya	Medan, Sumatera Utara	(very.wijaya@trimegah.com)
Tantie Rivi Watie	Pekanbaru, Riau	(tantierw@trimegah.com)
Agus Bambang Suseno	Solo, Jawa Tengah	(agus.suseno@trimegah.com)
Agus Bambang Suseno	Yogyakarta, Jawa Tengah	(agus.suseno@trimegah.com)
Donny Kristanto Setiadi	Palembang, Sumatra Selatan	(donny.kristanto@trimegah.com)
Sonny Muljadi	Malang, Jawa Timur	(sonny.muljadi@trimegah.com)

PT Trimegah Securities Tbk
18th Fl, Artha Graha Building
Jl. Jend. Sudirman Kav. 52-53
Jakarta 12190, INDONESIA
Tel : (6221) 2924 9088 Fax : (6221) 2924 9163

DISCLAIMER

This report has been prepared by PT Trimegah Securities Tbk on behalf of itself and its affiliated companies and is provided for information purposes only. Under no circumstances is it to be used or considered as an offer to sell, or a solicitation of any offer to buy. This report has been produced independently and the forecasts, opinions and expectations contained herein are entirely those of Trimegah Securities.

While all reasonable care has been taken to ensure that information contained herein is not untrue or misleading at the time of publication, Trimegah Securities makes no representation as to its accuracy or completeness and it should not be relied upon as such. This report is provided solely for the information of clients of Trimegah Securities who are expected to make their own investment decisions without reliance on this report. Neither Trimegah Securities nor any officer or employee of Trimegah Securities accept any liability whatsoever for any direct or consequential loss arising from any use of this report or its contents. Trimegah Securities and/or persons connected with it may have acted upon or used the information herein contained, or the research or analysis on which it is based, before publication. Trimegah Securities may in future participate in an offering of the company's equity securities.