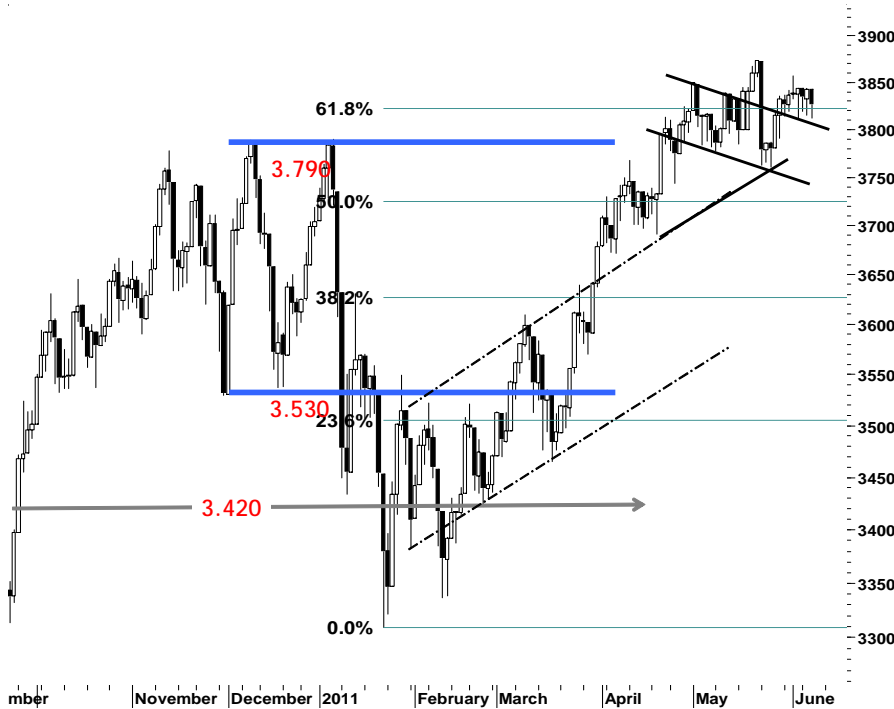


IHSG **3.825,8** **-17,1** **-0,45%**

Ulasan Pasar



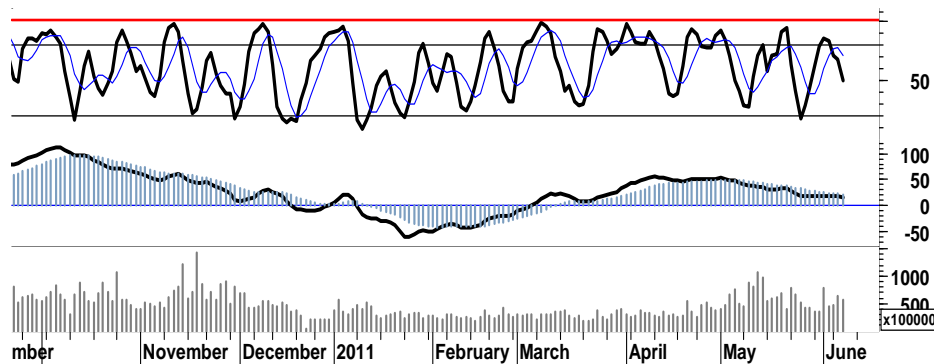
Mengakhiri sesi perdagangan kemarin, IHSG kembali terpuruk hingga 0,45% ditutup di level 3.826. Hal tersebut merupakan dampak dari sentimen negatif oleh adanya pelemahan indeks bursa global, terutama DJI, pasca uraian komentar yang disampaikan oleh Bernanke berkenaan dengan pertumbuhan perekonomian di Amerika Serikat yang sangat lambat.

Terkoreksi 17 poin kemarin, IHSG gagal kembali ke zona positif. Dimana para pelaku asing pun mencatat nilai penjualan bersih sebesar Rp119miliar, dengan diikuti oleh penurunan rasio volume perdagangan hingga 2,5%. Secara keseluruhan, IHSG pada perdagangan hari Rabu kemarin bergerak datar pada area konsolidasi 3.810 - 3.850. Arus distribusi terlihat moderat, serta menekan leading indikator menuju area teritori negatif.

IHSG membutuhkan lebih dari sekedar dorongan angin segar maupun sentimen positif, untuk dapat keluar dari zona merah. Kembalinya harga

minyak dunia ke level US\$100/barell, diharapkan mampu memberikan stimulus terhadap pergerakan IHSG pada perdagangan hari ini.

Kami perkirakan IHSG akan bergerak moderat cenderung positif dalam rentang harga 3.815 - 3.850, dengan tetap memperhatikan stop-loss support di level 3.780.



| S1 | S2 | R1 | R2 |
|-------|-------|-------|-------|
| 3,810 | 3,795 | 3,840 | 3,860 |

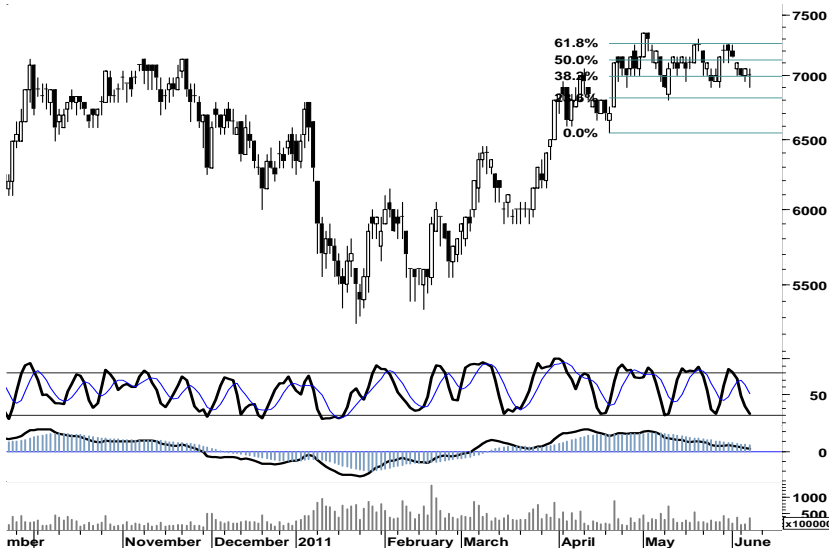
Saham Pilihan

| Saham | Harga (Rp) | Rekomendasi | Stochastic | RSI | BB Top | BB Bottom | S1 | S2 | R1 | R2 |
|-------|------------|-------------|------------|-------|--------|-----------|--------|--------|--------|--------|
| BMRI | 7,000 | OverSold | 22.22 | 46.49 | 7,200 | 6,950 | 6,950 | 6,850 | 7,150 | 7,250 |
| INDY | 4,100 | OverSold | 21.21 | 46.35 | 4,225 | 4,075 | 4,050 | 4,000 | 4,200 | 4,250 |
| ITMG | 47,350 | OverBought | 69.14 | 51.29 | 47,650 | 46,750 | 47,150 | 46,950 | 47,750 | 47,950 |
| SGRO | 3,425 | OverSold | 26.67 | 52.57 | 3,475 | 3,425 | 3,400 | 3,375 | 3,475 | 3,500 |
| SMGR | 9,300 | StrongBuy | 19.05 | 37.03 | 9,750 | 9,200 | 9,200 | 9,100 | 9,500 | 9,600 |
| TINS | 2,600 | Trading | 40.00 | 40.16 | 2,625 | 2,600 | 2,575 | 2,550 | 2,650 | 2,675 |

BMRI

7,000

OverSold



Terbatasnya ruang pelemahan yang tergambar pada leading indicator, mengindikasikan BMRI memiliki peluang untuk melakukan pembalikan arah.

Dengan berbasis support 6.900 serta stop-loss pendek di level 6.800, BMRI akan menguji rentang 6.950-7.100.

| S1 | S2 | R1 | R2 |
|-------|-------|-------|-------|
| 6,950 | 6,850 | 7,150 | 7,250 |

INDY

4,100

OverSold



Ditutup di area pivot support 4.100, INDY memiliki peluang yang untuk bergerak positif menguji resistensi harga 4.225. Apabila indikasi golden-cross pada stochastic, bukan merupakan signal tipuan yang justru akan menekan INDY menguji support 4.000.

Kami perkirakan INDY akan mencoba bergerak dalam rentang harga 4.050-4.200.

| S1 | S2 | R1 | R2 |
|-------|-------|-------|-------|
| 4,050 | 4,000 | 4,200 | 4,250 |

ITMG

47,350

OverBought



Golden cross pada fast moving oscillator yang terjadi 2 hari lalu, diharapkan mampu untuk kembali mendorong ITMG untuk bergerak menguji resistensi 47.600.

Setidaknya ITMG memiliki peluang untuk bergerak dalam rentang harga 47.150 - 47.550.

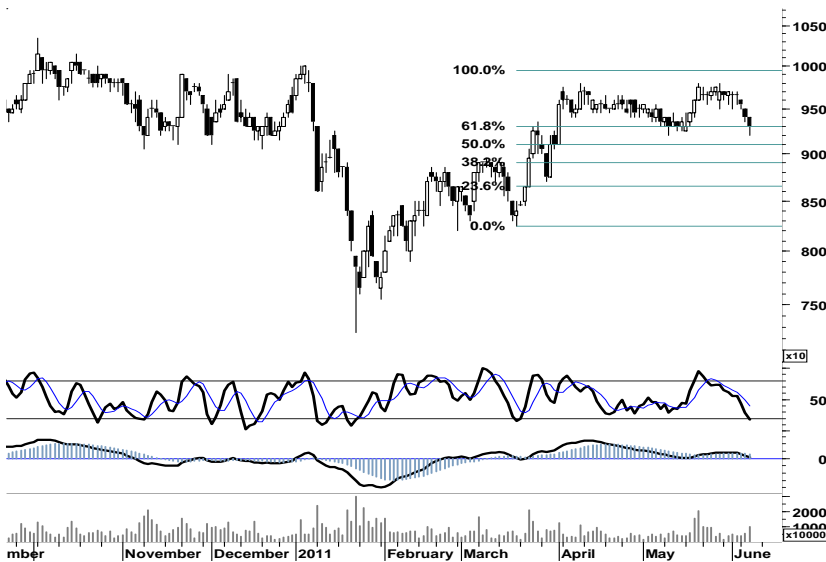
| S1 | S2 | R1 | R2 |
|--------|--------|--------|--------|
| 47,150 | 46,950 | 47,750 | 47,950 |



Support kuat 3.375 diharapkan mampu menahan laju tekanan yang masih membayangi pergerakan harga SGRO, yang juga sekaligus merupakan stop-loss level harga.

Dengan terbatasnya ruang tekanan pelemahan bagi SGRO, akumulasi pembelian dapat dilakukan pada area support 3.375-3.400.

| S1 | S2 | R1 | R2 |
|-------|-------|-------|-------|
| 3,400 | 3,375 | 3,475 | 3,500 |



Support harga pada retracement 62%, di harapkan mampu untuk mendorong SMGR melakukan pembalikan arah menuju target resisten harga terdekat pada level 9.800.

Dengan memperketat stop-loss di level 9.100, SMGR berpeluang untuk bergerak dalam interval 9.200-9.500.

| S1 | S2 | R1 | R2 |
|-------|-------|-------|-------|
| 9,200 | 9,100 | 9,500 | 9,600 |



Support harga 2.575, merupakan penentu arah bagi TINS untuk kembali menuju area hijau apabila berhasil melakukan penetrasi resistensi 2.625.

| S1 | S2 | R1 | R2 |
|-------|-------|-------|-------|
| 2,575 | 2,550 | 2,650 | 2,675 |

TRADE DATA

JCI (IHSG) 3,825.8 -17.1 -0.45%

| | | | |
|-------------------|-------|-----------------------|-------|
| YTD (Rp) | 3.3% | Volume (m) | 6,564 |
| YTD (USD) | 9.5% | Nilai (Rpbn) | 6,259 |
| Moving Avg 20day | 3,825 | Mkt Cap (Rptr) | 3,420 |
| Moving Avg 50day | 3,777 | Market P/E (x) | 16.4 |
| Moving Avg 200day | 3,578 | Market Div. Yield (%) | 2.4 |

Indonesia & Sectors +/- (%) YTD (%)

| | | | | |
|----------------|---------|-------|-------|-------|
| MSCI Indonesia | 4,715.5 | -34.3 | -0.72 | 3.72 |
| JII | 528.5 | -2.6 | -0.48 | -0.82 |
| LQ45 | 677.8 | -4.3 | -0.64 | 2.48 |
| JAKFIN Index | 495.6 | -3.0 | -0.01 | 6.19 |
| JAKINFR Index | 773.2 | -3.5 | -0.00 | -5.62 |
| JAKMINE Index | 3,299.8 | -5.6 | -0.00 | 0.78 |
| JAKCONS Index | 1,129.5 | -6.9 | -0.01 | 3.18 |
| JAKTRAD Index | 516.7 | 0.5 | 0.00 | 9.00 |
| JAKMIND Index | 1,079.7 | 0.9 | 0.00 | 11.65 |
| JAKBIND Index | 399.0 | -4.3 | -0.01 | 3.03 |
| JAKPROP Index | 210.5 | -2.1 | -0.01 | 3.63 |
| JAKAGRI Index | 2,351.6 | -15.9 | -0.01 | 2.94 |

Commodities +/- (%) YTD (%)

| | | | | |
|--------------------------|----------|-------|-------|--------|
| CRB Index | 348.34 | 2.0 | 0.58 | 4.67 |
| Oil & Gas | | | | |
| Crude Oil | 100.74 | 1.6 | 1.67 | 10.24 |
| Natural Gas | 4.85 | 0.0 | 0.33 | 10.03 |
| COAL (Rotterdam) | 126.25 | 0.7 | 0.56 | -3.92 |
| COAL (Amsterdam) | 126.00 | 1.1 | 0.86 | 0.04 |
| COAL (Australia,wk) | 118.65 | 0.0 | 0.00 | -3.06 |
| Industrial Metals | | | | |
| Aluminium | 2,655.8 | -19.3 | -0.72 | 7.99 |
| Nickel | 22,705 | 80 | 0.35 | -8.26 |
| Tin | 25,695 | -130 | -0.50 | -4.48 |
| Precious Metal | | | | |
| Gold | 1,538.70 | -5.3 | -0.34 | 8.25 |
| Silver | 36.62 | -0.4 | -1.15 | 18.47 |
| Soft Commodities | | | | |
| CPO (Malaysia) | 3,340.00 | -31.0 | -0.92 | -12.43 |
| CPO (Netherland) | 1,172.50 | 0.0 | 0.00 | -8.75 |
| Rubber | 5,287.27 | -6.8 | -0.13 | 5.88 |
| Corn | 764.00 | 27.5 | 3.73 | 21.46 |
| Wheat | 748.00 | 14.3 | 1.94 | -5.82 |
| Soybeans | 1,401.50 | 7.5 | 0.54 | 0.56 |
| Rice (Indonesia) | 6,850.00 | 100.0 | 1.48 | -3.52 |

Winners

| Stock | Price | (%) | Stock | Price | (%) |
|-------|--------|------|-------|--------|-------|
| ACES | 3,025 | 8.04 | INTP | 16,900 | -3.15 |
| JPFA | 4,400 | 7.32 | INDF | 5,300 | -2.75 |
| BRMS | 780 | 4.00 | BUMI | 3,375 | -2.17 |
| HRUM | 9,700 | 3.74 | BBNI | 3,750 | -1.96 |
| BRAU | 580 | 3.57 | EXCL | 5,850 | -1.68 |
| GJTL | 3,050 | 3.39 | BBCA | 7,000 | -1.41 |
| PNBN | 1,030 | 1.98 | ADRO | 2,450 | -1.01 |
| BDMN | 6,100 | 1.67 | UNVR | 14,800 | -1.00 |
| BYAN | 19,300 | 1.58 | BMRI | 7,000 | -0.71 |
| GGRM | 45,550 | 0.66 | PGAS | 3,975 | -0.62 |

Losers

| Stock | Price | (%) | Stock | Price | (%) |
|-------|--------|-------|-------|--------|-------|
| INTP | 16,900 | -3.15 | INDF | 5,300 | -2.75 |
| INDF | 5,300 | -2.75 | BUMI | 3,375 | -2.17 |
| BUMI | 3,375 | -2.17 | BBNI | 3,750 | -1.96 |
| BBNI | 3,750 | -1.96 | EXCL | 5,850 | -1.68 |
| EXCL | 5,850 | -1.68 | BBCA | 7,000 | -1.41 |
| BBCA | 7,000 | -1.41 | ADRO | 2,450 | -1.01 |
| ADRO | 2,450 | -1.01 | UNVR | 14,800 | -1.00 |
| UNVR | 14,800 | -1.00 | BMRI | 7,000 | -0.71 |
| BMRI | 7,000 | -0.71 | PGAS | 3,975 | -0.62 |
| PGAS | 3,975 | -0.62 | | | |

Regional Indices

| | | | +/- | (%) | YTD (%) |
|----------------------|------------|----------|--------|-------|---------|
| MXWO | MSCI World | 1,301.8 | -10.1 | -0.77 | 1.70 |
| SPX | S&P 500 | 1,279.6 | -5.4 | -0.42 | 1.74 |
| US | | | | | |
| Dow Jones Industrial | | 12,048.9 | -21.9 | -0.18 | 4.07 |
| Nasdaq | US | 2,675.4 | -26.2 | -0.97 | 0.85 |
| Europe | | | | | |
| EURO 50 | Europe | 269.0 | -2.9 | -1.05 | -2.47 |
| FTSE | London | 5,808.9 | -55.8 | -0.95 | -1.54 |
| DAX | German | 7,060.2 | -43.0 | -0.61 | 2.11 |
| CAC | France | 3,838.0 | -33.9 | -0.88 | 0.87 |
| SMI | Swiss | 6,256.9 | -73.8 | -1.17 | -2.78 |
| BRIC | | | | | |
| BOVESPA | Brazil | 63,033.0 | -184.9 | -0.29 | -9.05 |
| MICEX | Russia | 1,664.8 | 2.1 | 0.13 | -1.37 |
| SENSEX | India | 18,394.3 | -101.3 | -0.55 | -10.31 |
| NIFTY | India | 5,526.9 | -29.3 | -0.53 | -9.91 |
| SHCOMP | China | 2,750.3 | 6.0 | 0.22 | -2.06 |
| SZCOMP | China | 1,136.5 | 3.8 | 0.34 | -11.96 |

Developed ASIA

| | | | | | |
|--------------|-------------|----------|--------|-------|-------|
| Nikkei | Japan | 9,449.5 | 6.5 | 0.07 | -7.62 |
| TPX | Japan | 814.5 | 0.7 | 0.08 | -9.38 |
| HIS | Hong kong | 22,661.6 | -207.0 | -0.91 | -1.62 |
| KOSPI | S.Korea | 2,083.4 | -16.4 | -0.78 | 1.58 |
| TAIEX | Taiwan | 9,007.5 | -49.6 | -0.55 | 0.39 |
| FSSTI | Singapore | 3,103.0 | -13.0 | -0.42 | -2.73 |
| ASEAN | | | | | |
| SET | Thailand | 1,014.6 | -20.2 | -1.95 | -1.76 |
| PCOMP | Philippines | 4,255.4 | 19.0 | 0.45 | 1.29 |
| KLCI | Malaysia | 1,551.8 | -0.1 | -0.01 | 2.16 |
| VNINDEX | Vietnam | 439.6 | -4.1 | -0.93 | -9.30 |

Currency

| | | | +/- | (%) | YTD (%) |
|--------|----------------|---------|--------|-------|---------|
| EURUSD | Euro | 1.458 | -0.011 | -0.74 | 8.96 |
| GBPUSD | United Kingdom | 1.640 | -0.004 | -0.27 | 5.07 |
| USDCHF | Switzerland | 0.836 | -0.000 | -0.04 | -10.61 |
| USDCAD | Canada | 0.979 | 0.005 | 0.49 | -1.87 |
| AUDUSD | Australia | 1.062 | -0.010 | -0.91 | 3.81 |
| NZDUSD | New Zealand | 0.815 | -0.006 | -0.67 | 4.46 |
| USDJPY | Japan | 79.9 | -0.200 | -0.25 | -1.52 |
| USDCNY | China | 6.476 | -0.006 | -0.09 | -1.99 |
| USDHKD | Hongkong | 7.783 | 0.002 | 0.03 | 0.12 |
| USDSGD | Singapore | 1.234 | 0.007 | 0.55 | -3.86 |
| Rupiah | Indonesia | 8,515.0 | 2.000 | 0.02 | -5.35 |

Value

| Value | (Rpbn) | Volume | (Lot) | Freq | (x) |
|-------|---------|--------|-----------|------|-------|
| BUMI | 292,843 | DEWA | 1,468,833 | MRAT | 5,318 |
| HRUM | 262,297 | ELTY | 1,120,001 | ELTY | 3,747 |
| BMRI | 248,595 | BNBR | 861,300 | BHIT | 3,492 |
| BBNI | 195,474 | ENRG | 765,910 | DEWA | 2,693 |
| ASII | 148,832 | TRUB | 567,311 | CLPI | 2,325 |
| TLKM | 148,248 | BHIT | 331,924 | BMRI | 2,069 |
| BBRI | 147,546 | BRAU | 257,344 | BUMI | 1,906 |
| ADRO | 137,377 | BRMS | 191,485 | TLKM | 1,864 |
| PTBA | 110,584 | BUMI | 172,699 | HRUM | 1,696 |
| SMGR | 92,724 | LPKR | 129,545 | BBRI | 1,677 |

| Code | Last | Ytd Chg(%) | H-5 Chg (%) | Rekomendasi | STO | RSI | MACD | Bollinger Band | | Support | | | Resistance | | | H-5 | |
|------|--------|------------|-------------|--------------|------|------|---------|----------------|--------|---------|--------|--------|------------|--------|--------|---------|--------|
| | | | | | | | | Top | Bottom | 1 | 2 | 3 | 1 | 2 | 3 | Highest | Lowest |
| AALI | 23,400 | -12.69 | -0.85 | Trading | 44.9 | 50.2 | 66.7 | 23,850 | 23,250 | 23,250 | 23,100 | 23,000 | 23,500 | 23,600 | 23,750 | 23,950 | 23,150 |
| ACES | 3,025 | 6.14 | 12.04 | StrongSell | 80.6 | 75.6 | 38.4 | 3,150 | 2,475 | 2,825 | 2,625 | 2,500 | 3,150 | 3,275 | 3,475 | 3,075 | 2,600 |
| ADRO | 2,450 | -8.41 | 0.00 | TakeProfit | 75.0 | 60.4 | 43.5 | 2,500 | 2,425 | 2,425 | 2,400 | 2,375 | 2,475 | 2,500 | 2,525 | 2,500 | 2,375 |
| AKRA | 1,790 | 5.29 | -2.72 | OverSold | 39.3 | 65.5 | 51.7 | 1,830 | 1,770 | 1,780 | 1,760 | 1,750 | 1,810 | 1,820 | 1,840 | 1,850 | 1,760 |
| ANTM | 2,125 | -14.14 | -1.16 | Trading | 44.4 | 35.1 | (31.2) | 2,175 | 2,125 | 2,125 | 2,100 | 2,100 | 2,150 | 2,150 | 2,175 | 2,175 | 2,100 |
| ASII | 59,500 | 9.38 | 1.28 | OverBought | 75.3 | 56.6 | 592.7 | 59,900 | 58,950 | 59,000 | 58,500 | 58,250 | 59,750 | 60,000 | 60,500 | 59,850 | 58,300 |
| BBCA | 7,000 | 8.53 | -1.41 | OverSold | 28.6 | 42.2 | (43.5) | 7,200 | 7,000 | 7,000 | 6,950 | 6,900 | 7,100 | 7,150 | 7,200 | 7,250 | 7,000 |
| BBNI | 3,750 | -1.32 | -3.23 | Accumulate | 26.3 | 38.8 | (41.3) | 3,875 | 3,725 | 3,725 | 3,675 | 3,625 | 3,825 | 3,875 | 3,925 | 3,900 | 3,725 |
| BBRI | 6,400 | 23.67 | 0.79 | Trading | 56.3 | 54.5 | 34.3 | 6,600 | 6,250 | 6,350 | 6,250 | 6,200 | 6,500 | 6,550 | 6,650 | 6,500 | 6,250 |
| BBTN | 1,670 | 0.00 | 0.60 | OverBought | 61.5 | 53.0 | (11.5) | 1,690 | 1,630 | 1,660 | 1,650 | 1,640 | 1,680 | 1,690 | 1,700 | 1,670 | 1,630 |
| BDMN | 6,100 | 10.91 | -1.61 | OverSold | 33.3 | 49.6 | (27.8) | 6,250 | 6,000 | 6,050 | 6,000 | 5,950 | 6,150 | 6,200 | 6,250 | 6,200 | 6,000 |
| BISI | 1,540 | -17.65 | -1.28 | StrongBuy | 15.0 | 38.3 | (28.9) | 1,600 | 1,530 | 1,540 | 1,530 | 1,520 | 1,560 | 1,570 | 1,580 | 1,610 | 1,540 |
| BMRI | 7,000 | 8.53 | -2.78 | OverSold | 22.2 | 46.5 | 5.7 | 7,200 | 6,950 | 6,950 | 6,850 | 6,800 | 7,100 | 7,150 | 7,250 | 7,250 | 6,900 |
| BSDE | 900 | 2.27 | -1.10 | OverSold | 27.3 | 49.4 | 2.1 | 920 | 890 | 890 | 875 | 860 | 920 | 935 | 950 | 930 | 890 |
| BTEL | 360 | 53.19 | -4.00 | Trading | 50.0 | 35.8 | (3.7) | 371 | 359 | 355 | 350 | 345 | 365 | 370 | 375 | 375 | 355 |
| BUMI | 3,375 | 8.00 | 2.27 | OverBought | 71.4 | 47.2 | (9.0) | 3,500 | 3,325 | 3,350 | 3,300 | 3,250 | 3,450 | 3,500 | 3,550 | 3,475 | 3,300 |
| CTRA | 430 | 22.86 | 3.61 | TakeProfit | 76.9 | 61.7 | 8.7 | 442 | 412 | 425 | 420 | 415 | 435 | 440 | 445 | 435 | 410 |
| ELTY | 163 | 1.24 | 1.24 | OverBought | 71.8 | 54.7 | 3.4 | 167 | 161 | 160 | 157 | 153 | 167 | 171 | 174 | 168 | 151 |
| EXCL | 5,850 | 11.43 | -4.88 | Accumulate | 25.6 | 36.2 | (81.7) | 6,050 | 5,850 | 5,800 | 5,700 | 5,600 | 6,000 | 6,100 | 6,200 | 6,500 | 5,750 |
| GGRM | 45,550 | 10.96 | 4.59 | StrongSell | 82.4 | 74.8 | 912.3 | 46,100 | 44,400 | 45,200 | 44,800 | 44,600 | 45,800 | 46,000 | 46,400 | 45,850 | 43,300 |
| HEXA | 6,300 | -13.10 | -3.82 | StrongBuy | 9.5 | 49.4 | 94.5 | 6,600 | 6,250 | 6,300 | 6,250 | 6,200 | 6,400 | 6,450 | 6,500 | 6,700 | 6,300 |
| INCO | 4,675 | -6.03 | -2.09 | StrongBuy | 12.5 | 38.4 | (35.2) | 4,825 | 4,625 | 4,650 | 4,625 | 4,600 | 4,700 | 4,725 | 4,750 | 4,875 | 4,650 |
| INDF | 5,300 | 7.07 | -1.85 | Trading | 41.7 | 41.7 | (33.7) | 5,550 | 5,300 | 5,250 | 5,200 | 5,050 | 5,450 | 5,600 | 5,650 | 5,500 | 5,300 |
| INDY | 4,100 | -19.61 | -4.65 | OverSold | 21.2 | 46.4 | 21.2 | 4,225 | 4,075 | 4,050 | 4,000 | 3,950 | 4,150 | 4,200 | 4,250 | 4,375 | 4,050 |
| INTP | 16,900 | 5.30 | 0.00 | OverBought | 72.2 | 48.5 | 78.9 | 17,800 | 16,650 | 16,750 | 16,600 | 16,300 | 17,200 | 17,500 | 17,650 | 17,550 | 16,650 |
| ISAT | 5,200 | -4.59 | -0.95 | Trading | 50.0 | 44.8 | (28.5) | 5,300 | 5,150 | 5,150 | 5,100 | 5,050 | 5,250 | 5,300 | 5,350 | 5,250 | 5,100 |
| ITMG | 47,350 | -12.80 | 0.74 | OverBought | 69.1 | 51.3 | (72.6) | 47,650 | 46,750 | 47,150 | 46,950 | 46,750 | 47,550 | 47,750 | 47,950 | 47,650 | 46,300 |
| JSMR | 3,350 | -5.63 | -3.60 | Accumulate | 33.3 | 39.8 | 0.3 | 3,500 | 3,300 | 3,350 | 3,325 | 3,300 | 3,400 | 3,425 | 3,450 | 3,500 | 3,325 |
| KLBF | 3,375 | 1.50 | -5.59 | StrongBuy | 16.7 | 44.1 | (28.1) | 3,475 | 3,375 | 3,375 | 3,350 | 3,325 | 3,425 | 3,450 | 3,475 | 3,575 | 3,375 |
| LSIP | 2,350 | -7.48 | -3.09 | OverSold | 30.0 | 43.4 | (1.7) | 2,450 | 2,350 | 2,350 | 2,325 | 2,300 | 2,400 | 2,425 | 2,450 | 2,450 | 2,350 |
| MYOR | 13,100 | 21.30 | 0.77 | TakeProfit | 63.2 | 74.2 | 370.2 | 13,150 | 12,800 | 13,000 | 12,850 | 12,800 | 13,200 | 13,250 | 13,400 | 13,100 | 12,800 |
| PGAS | 3,975 | -11.17 | -1.85 | OverSold | 35.0 | 45.8 | (3.5) | 4,100 | 3,925 | 3,975 | 3,950 | 3,950 | 4,000 | 4,000 | 4,025 | 4,100 | 3,925 |
| PTBA | 21,000 | -12.32 | -1.18 | Trading | 40.0 | 38.5 | (183.8) | 21,500 | 20,900 | 20,850 | 20,650 | 20,450 | 21,250 | 21,450 | 21,650 | 21,500 | 20,850 |
| RALS | 820 | -4.65 | -3.53 | Trading Sell | 60.9 | 58.3 | 17.9 | 850 | 810 | 20,870 | 20,870 | 20,870 | 20,870 | 20,870 | 20,870 | 860 | 780 |
| SGRO | 3,425 | 5.38 | -0.72 | OverSold | 26.7 | 52.6 | 22.4 | 3,475 | 3,425 | 3,400 | 3,375 | 3,350 | 3,450 | 3,475 | 3,500 | 3,525 | 3,400 |
| SMCB | 2,175 | -2.25 | -3.33 | OverSold | 35.3 | 51.7 | 19.3 | 2,275 | 2,175 | 2,150 | 2,125 | 2,075 | 2,225 | 2,275 | 2,300 | 2,300 | 2,150 |
| SMGR | 9,300 | -5.58 | -4.12 | StrongBuy | 19.0 | 37.0 | (3.4) | 9,750 | 9,200 | 9,200 | 9,100 | 9,000 | 9,400 | 9,500 | 9,600 | 9,700 | 9,200 |
| SMRA | 1,160 | 7.41 | 1.75 | OverBought | 68.4 | 54.4 | 1.8 | 1,200 | 1,140 | 1,140 | 1,110 | 1,080 | 1,200 | 1,230 | 1,260 | 1,200 | 1,120 |
| TINS | 2,600 | -8.77 | 0.00 | Trading | 40.0 | 40.2 | (40.0) | 2,625 | 2,600 | 2,575 | 2,550 | 2,525 | 2,625 | 2,650 | 2,675 | 2,650 | 2,550 |
| TLKM | 7,500 | -6.25 | -2.60 | StrongBuy | 18.8 | 44.4 | 10.7 | 7,750 | 7,400 | 7,450 | 7,400 | 7,350 | 7,550 | 7,600 | 7,650 | 7,750 | 7,450 |
| UNTR | 23,150 | -4.73 | 0.65 | TakeProfit | 79.5 | 60.9 | 224.4 | 23,350 | 22,750 | 23,050 | 22,900 | 22,850 | 23,250 | 23,300 | 23,450 | 23,200 | 22,500 |
| UNVR | 14,800 | -7.79 | 0.68 | OverBought | 71.4 | 43.1 | (53.2) | 15,050 | 14,750 | 14,750 | 14,700 | 14,600 | 14,900 | 15,000 | 15,050 | 14,950 | 14,700 |

S1 = Support 1 S2 = Support 2 S3 = Support 3
 R1 = Resisten 1 R2 = Resisten 2 R2 = Resisten 2
 STO = Stochastic Oscillator
 RSI = Relative Strength Index
 MACD = Moving Average Convergence Divergence
 H-5 = 5 hari sebelumnya

RESEARCH TEAM

| | | |
|-------------------------------|--------------------|-----------------------------------|
| Andrian Tanuwijaya | Equity Analyst | (andrian.tanuwijaya@trimegah.com) |
| Hanel Topada Era Tania | Equity Analyst | (hanel.tania@trimegah.com) |
| Paul Raymond Widjaja | Equity Analyst | (paul.widjaja@trimegah.com) |
| T Hedy Arifien | Technical Analyst | (hedy@trimegah.com) |
| Rovandi | Research Assistant | (rovandi@trimegah.com) |

EQUITY CAPITAL MARKET TEAM

| | | |
|----------------------------------|------------------------------|---------------------------------|
| Nathanael Benny Prasetyo | Head of Retail ECM | (benny.prasetyo@trimegah.com) |
| Windra Djulnaily | Pluit, Jakarta | (windra.djulnaily@trimegah.com) |
| Ariawan Anwar | Artha Graha, Jakarta | (ariawan.anwar@trimegah.com) |
| Ferry Zabur | Kelapa Gading, Jakarta | (ferry.zabur@trimegah.com) |
| Wirjawan Joesoef | Mangga Dua, Jakarta | (iwan@trimegah.com) |
| Lukman Abdul Azis | Kebon Jeruk, Jakarta | (lukman@trimegah.com) |
| Tutik Suciati | Semarang, Jawa Tengah | (tuty.s@trimegah.com) |
| Sonny Muljadi | Surabaya, Jawa Timur | (sonny.muljadi@trimegah.com) |
| Ni Luh Ketut Sri Agustini | Denpasar, Bali | (sri.agustini@trimegah.com) |
| Philip Fernando Suwandi | Makassar, Sulawesi Selatan | (philip.fs@trimegah.com) |
| agus.jatmiko | Balikpapan, Kalimantan Timur | (agus.jatmiko@trimegah.com) |
| Asep Saepudin | Bandung, Jawa Barat | (asep.saepudin@trimegah.com) |
| Asep Saepudin | Cirebon, Jawa Barat | (asep.saepudin@trimegah.com) |
| Very Wijaya | Medan, Sumatera Utara | (very.wijaya@trimegah.com) |
| Tantie Rivi Watie | Pekanbaru, Riau | (tantierw@trimegah.com) |
| Agus Bambang Suseno | Solo, Jawa Tengah | (agus.suseno@trimegah.com) |
| Agus Bambang Suseno | Yogyakarta, Jawa Tengah | (agus.suseno@trimegah.com) |
| Donny Kristanto Setiadi | Palembang, Sumatra Selatan | (donny.kristanto@trimegah.com) |
| Sonny Muljadi | Malang, Jawa Timur | (sonny.muljadi@trimegah.com) |

PT Trimegah Securities Tbk
18th Fl, Artha Graha Building
Jl. Jend. Sudirman Kav. 52-53
Jakarta 12190, INDONESIA
Tel : (6221) 2924 9088 Fax : (6221) 2924 9163

DISCLAIMER

This report has been prepared by PT Trimegah Securities Tbk on behalf of itself and its affiliated companies and is provided for information purposes only. Under no circumstances is it to be used or considered as an offer to sell, or a solicitation of any offer to buy. This report has been produced independently and the forecasts, opinions and expectations contained herein are entirely those of Trimegah Securities.

While all reasonable care has been taken to ensure that information contained herein is not untrue or misleading at the time of publication, Trimegah Securities makes no representation as to its accuracy or completeness and it should not be relied upon as such. This report is provided solely for the information of clients of Trimegah Securities who are expected to make their own investment decisions without reliance on this report. Neither Trimegah Securities nor any officer or employee of Trimegah Securities accept any liability whatsoever for any direct or consequential loss arising from any use of this report or its contents. Trimegah Securities and/or persons connected with it may have acted upon or used the information herein contained, or the research or analysis on which it is based, before publication. Trimegah Securities may in future participate in an offering of the company's equity securities.