

IHSG **3.715,1** **27,3** **0,74%**

Ulisan Pasar



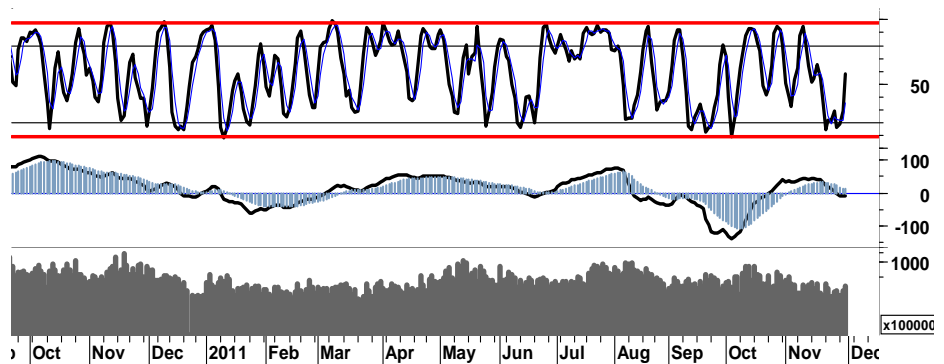
Aksi beli yang terjadi pada sejumlah saham lapis kedua di perdagangan kemarin mendominasi IHSG berhasil meredam gencarnya tekanan profit taking di beberapa saham unggulan yang sejak awal pekan ini menjadi motor penggerak penguatan bursa. IHSG pada akhir sesi perdagangan kemarin ditutup menguat 27,3 poin pada level 3.715, dimana sebelumnya sempat menguji resistensi harian terdekat di level 3.720. Investor asing pun kembali membukukan nilai pembelian bersih sebesar Rp238,9 miliar.

Penetrasi resistensi harga 3.705 pada area 50% Fibonacci Retracement, didukung pula dengan masih cukup kuatnya signal trading pada stochastic oscillator, diharapkan mampu memberikan dukungan sentimen positif untuk kembali membawa IHSG memasuki zona perdagangan positif dalam area 3.715 - 3.810.

Fokus yang tertuju pada upaya penyelesaian krisis utang di Eropa kembali memberikan ruang pada sejumlah indeks utama Eropa bergerak

menguat cukup signifikan, dimana; DAX/CAC bergerak positif 5,0%/4,2%. Dilain pihak indeks bursa utama di Amerika pun mendapatkan dorongan positif dengan adanya laporan pertumbuhan perekonomian yang membaik, dimana DJI, S&P500 serta Nasdaq bergerak menguat 4,2%, 4,3%, 4,2%.

Dalam kondisi global yang cukup kondusif seperti saat ini, IHSG memiliki peluang untuk bergerak positif serta melakukan penetrasi resistensi area resistensi 3.720/3.750 dengan basis support di 3.680.



S1	S2	R1	R2
3,690	3,665	3,730	3,745

Saham Pilihan

Saham	Harga (Rp)	Rekomendasi	Stochastic	RSI	BB Top	BB Bottom	S1	S2	R1	R2
ADRO	1,910	Trading	58.06	45.72	1,930	1,880	1,880	1,850	1,990	2,020
ASII	70,900	OverBought	68.57	57.16	72,300	67,950	69,700	68,500	72,500	73,700
INDF	4,700	Accumulate	30.77	37.12	4,725	4,675	4,625	4,550	4,850	4,925
INDY	2,175	Trading	42.31	37.03	2,225	2,050	2,125	2,075	2,275	2,325
SMCB	1,890	StrongSell	82.14	57.44	1,940	1,810	1,880	1,860	1,940	1,960
UNVR	18,200	StrongSell	88.79	74.52	18,600	17,350	17,400	16,550	19,150	20,000



Secara keseluruhan menyempitnya ruang pergerakan pada ADRO mengindikasikan adanya turbulensi harga di sekitar area resistensi 1.900-2.000.

Setidaknya signal positif yang dicerminkan oleh *stochastic (5d)*, menunjukkan manfaat serta peluang bagi saham tersebut untuk bisa bergerak positif dalam rentang harga 1.880 - 2.020.

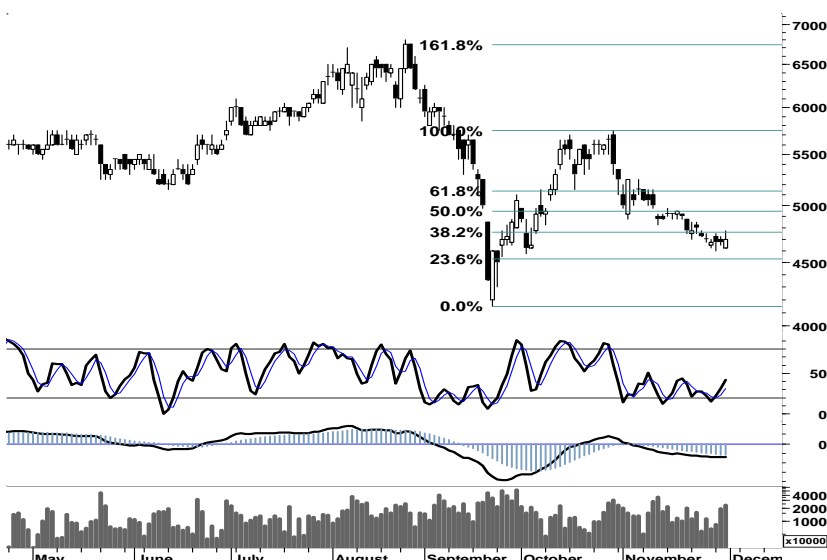
S1	S2	R1	R2
1,880	1,850	1,990	2,020



Resistensi area 71.000 yang cukup kuat sejak September 2011, menahan laju penguatan ASII. Sekaligus merupakan indikasi serta potensi rally akan terganggu, seiring ASII yang telah berada pada area overboughtnya.

Dengan demikian, waspadai adanya ancaman uji support 69.800 dalam upaya ASII bertahan pada rentang positif 68.500 - 72.500.

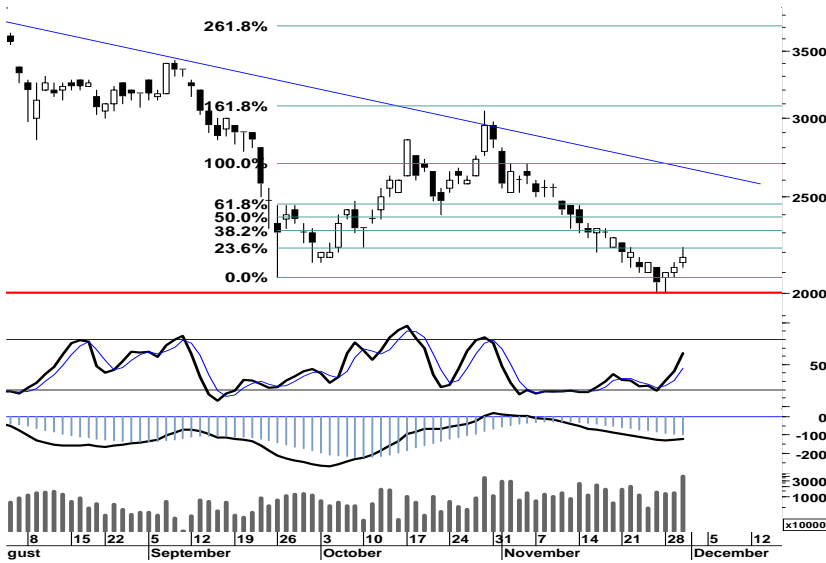
S1	S2	R1	R2
69,700	68,500	72,500	73,700



Perlawanan kekuatan jual yang terjadi di akhir sesi, telah menahan INDF melakukan pembalikan arah pada support kuat 4.600.

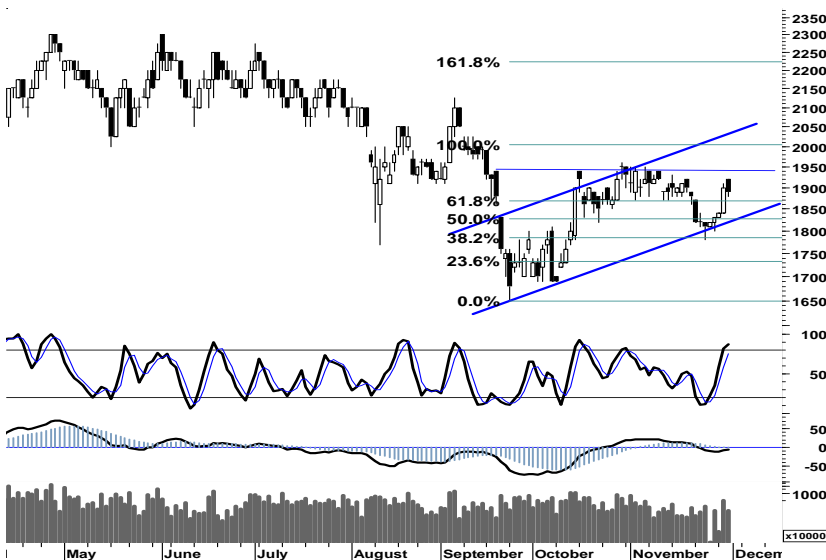
Untuk dapat keluar dari area trading negatif serta mencapai target *61,8% fibonacci retracement* di level 5.125, signal positif yang diperoleh melalui fast moving oscillator dapat mendorong INDF bergerak dalam rentang 4.650 -4.900.

S1	S2	R1	R2
4,625	4,550	4,850	4,925



Pasca upaya melakukan pembalikan arah pada basis support 2.000 (support level 2009), ruang penguatan yang masih terbuka pada stochastic oscillator (5d) merupakan momentum positif yang dapat dimanfaatkan pada saat INDY mencoba penetrasi resistensi 2.275.

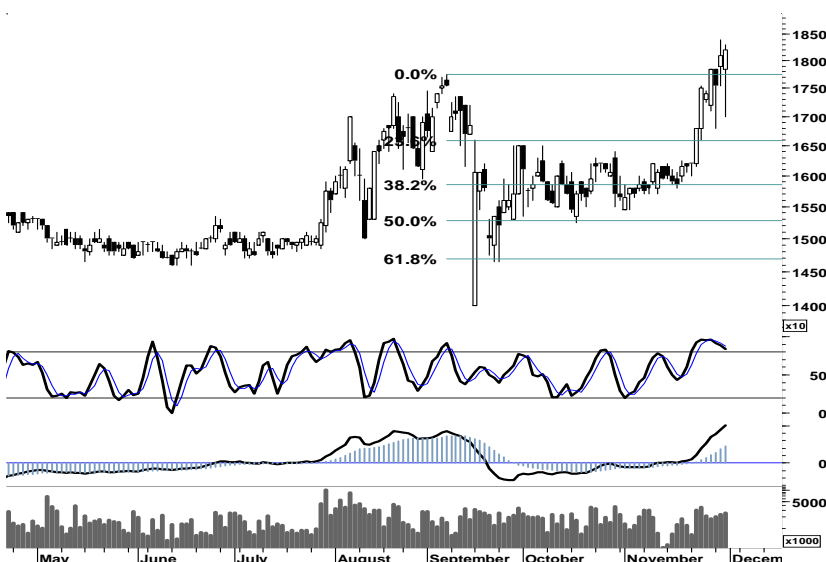
S1	S2	R1	R2
2,125	2,075	2,275	2,325



Rally penguatan SMCB terkendala pada trend support dari ascending triangle, yang sekaligus merupakan peak pada area overbought.

dengan demikian ekspektasi pergerakan akan menguji support 1.860/1.820, sebelum melanjutkan uji penetrasi resistensi area kuat di 1.940.

S1	S2	R1	R2
1,880	1,860	1,940	1,960



Bergerak pada peak area harga maupun distribusi, mengakibatkan rally penguatan pada UNVR akan terganggu.

Ruang tipis 18.500/19.000 merupakan area dimana akumulasi profit sebaiknya dilakukan.

S1	S2	R1	R2
17,400	16,550	19,150	20,000

TRADE DATA

JCI (IHSG) 3,715.1 27.3 0.74%

YTD (Rp)	0.3%	Volume (m) :	3,540
YTD (USD)	-1.0%	Nilai (Rpbn) :	3,328
Moving Avg 20day	3,749	Mkt Cap (Rpbn) :	3,439
Moving Avg 50day	3,645	Market P/E (x) :	16.2
Moving Avg 200day	3,748	Market Div. Yield (%) :	2.4

Indonesia & Sectors +/- (%) YTD (%)

MSCI Indonesia	4,631.8	29.1	0.63	1.87
JII	520.5	2.0	0.38	-2.33
LQ45	656.4	3.8	0.59	-0.75
JAKFIN Index	483.0	1.7	0.00	3.49
JAKINFR Index	694.0	12.3	0.02	-15.28
JAKMINE Index	2,492.3	0.9	0.00	-23.88
JAKCONS Index	1,320.6	20.3	0.02	20.64
JAKTRAD Index	550.6	2.3	0.00	16.14
JAKMIND Index	1,260.7	-0.7	-0.00	30.37
JAKBIND Index	373.4	6.3	0.02	-3.59
JAKPROP Index	203.4	0.6	0.00	0.16
JAKAGRI Index	2,174.3	20.6	0.01	-4.82

Commodities +/- (%) YTD (%)

CRB Index	313.82	3.4	1.09	-5.70
Oil & Gas				
Crude Oil	100.36	0.6	0.57	9.83
Natural Gas	3.55	-0.1	-2.28	-19.41
COAL (Rotterdam)	112.80	1.8	1.58	-14.16
COAL (Amsterdam)	112.20	1.2	1.08	-10.92
COAL (Australia,wk)	110.85	0.0	0.00	-9.44
Industrial Metals				
Alumunium	2,110.75	118.3	5.93	-14.17
Nickel	17,500	450	2.64	-29.29
Tin	20,900	330	1.60	-22.30
Prescious Metal				
Gold	1,745.50	32.1	1.87	22.80
Silver	32.73	0.9	2.76	5.89
Soft Commodities				
CPO (Malaysia)	3,000.00	-58.0	-1.90	-21.34
CPO (Netherland)	1,035.00	-7.5	-0.72	-19.46
Rubber	3,233.70	-19.2	-0.59	-35.25
Corn	601.25	3.3	0.54	-4.41
Wheat	595.75	1.3	0.21	-24.99
Soybeans	1,131.25	6.3	0.56	-18.83
Rice (Indonesia)	7,750.00	0.0	0.00	9.15

Winners

Stock	Price	(%)	Stock	Price	(%)
IDKM	2,625	25.00	UNTR	23,350	-4.30
FASW	3,650	23.73	HRUM	6,700	-4.29
EMTK	3,350	22.94	DSSA	11,750	-3.69
ISAT	5,350	4.90	GJTL	2,775	-2.63
GGRM	65,000	3.83	TBIG	2,125	-2.30
TLKM	7,350	2.80	BSDE	850	-2.30
AALI	22,400	2.75	BMRI	6,400	-2.29
BBCA	7,900	2.60	BYAN	17,950	-1.10
SMGR	9,250	2.21	INCO	3,050	-0.81
UNVR	18,200	0.55	BDMN	4,400	-0.56

Losers

Stock	Price	(%)	Stock	Price	(%)
UNTR	23,350	-4.30	UNTR	23,350	-4.30
HRUM	6,700	-4.29	HRUM	6,700	-4.29
DSSA	11,750	-3.69	DSSA	11,750	-3.69
GJTL	2,775	-2.63	GJTL	2,775	-2.63
TBIG	2,125	-2.30	TBIG	2,125	-2.30
BSDE	850	-2.30	BSDE	850	-2.30
BMRI	6,400	-2.29	BMRI	6,400	-2.29
BYAN	17,950	-1.10	BYAN	17,950	-1.10
INCO	3,050	-0.81	INCO	3,050	-0.81
BDMN	4,400	-0.56	BDMN	4,400	-0.56

Regional Indices +/- (%) YTD (%)

MXWO	MSCI Word	1,184.6	44.9	3.94	-7.46
SPX	S&P 500	1,247.0	51.8	4.33	-0.85
US					
Dow Jones Industrial		12,045.7	490.1	4.24	4.04
Nasdaq	US	2,620.3	104.8	4.17	-1.23
Europe					
EURO 50	Europe	240.1	8.4	3.63	-12.95
FTSE	London	5,505.4	168.4	3.16	-6.69
DAX	Jerman	6,088.8	288.9	4.98	-11.94
CAC	France	3,154.6	127.9	4.22	-17.09
SMI	Swiss	5,652.3	121.1	2.19	-12.18
BRIC					
BOVESPA	Brazil	56,875.0	1,575.2	2.85	-17.94
MICEX	Russia	1,499.6	44.9	3.09	-11.16
SENSEX	India	16,123.5	115.1	0.72	-21.38
NIFTY	India	4,832.1	26.9	0.56	-21.23
SHCOMP	China	2,333.4	-79.0	-3.27	-16.90
SZCOMP	China	994.0	-41.5	-4.01	-23.00

Developed ASIA

Nikkei	Japan	8,434.6	-43.2	-0.51	-17.54
TPX	Japan	728.5	-1.2	-0.17	-18.95
HIS	Hong kong	17,989.4	-266.9	-1.46	-21.91
KOSPI	S.Korea	1,847.5	-9.0	-0.49	-9.92
TAIEX	Taiwan	6,904.1	-84.5	-1.21	-23.05
FSSTI	Singapore	2,702.5	14.4	0.53	-15.28

ASEAN

SET	Thailand	995.3	7.3	0.74	-3.62
PCOMP	Philippines	4,211.0	0.0	0.00	0.24
KLCI	Malaysia	1,472.1	27.4	1.90	-3.08
VNINDEX	Vietnam	380.7	-2.2	-0.58	-21.45

Currency +/- (%) YTD (%)

EURUSD	Euro	1.345	0.013	0.97	0.46
GBPUSD	United Kingdom	1.570	0.011	0.69	0.59
USDCHE	Switzerland	0.913	-0.008	-0.84	-2.35
USDCAD	Canada	1.017	-0.015	-1.42	1.94
AUDUSD	Australia	1.028	0.028	2.83	0.49
NZDUSD	New Zealand	0.781	0.020	2.56	0.04
USDJPY	Japan	77.6	-0.310	-0.40	-4.31
USDCNY	China	6.379	0.002	0.04	-3.44
USDHKD	Hongkong	7.768	-0.022	-0.29	-0.07
USDSGD	Singapore	1.282	-0.016	-1.24	-0.14
Rupiah	Indonesia	9,113.0	-45.000	-0.49	1.30

Value (Rpbn) Volume (Lot) Freq (x)

BMRI	253,700	KIJA	672,889	TMPI	6,931
ASII	228,925	ENRG	476,107	KIJA	4,115
BBRI	196,643	TMPI	286,955	BMRI	3,419
HRUM	166,780	PNLF	254,082	BWPT	3,261
ADRO	164,537	BKSL	215,204	ADRO	3,009
BBCA	158,767	BHIT	191,237	BHIT	2,557
TLKM	139,497	BSDE	174,776	BBRI	2,443
INDF	107,554	ELTY	172,369	BBRI	2,443
INDY	83,303	ADRO	171,110	ASII	2,306
BBNI	76,254	BULL	155,071	BSDE	2,148

Code	Last	Ytd Chg(%)	H-5 Chg (%)	Rekomendasi	STO	RSI	MACD	Bollinger Band		Support			Resistance			H-5	
								Top	Bottom	1	2	3	1	2	3	Highest	Lowest
AALI	22,400	-16.42	5.91	OverSold	34.0	54.7	282.4	23,000	20,250	22,100	21,800	21,650	22,550	22,700	23,000	22,400	20,500
ACES	3,800	33.33	0.00	TakeProfit	66.7	65.2	102.9	3,975	3,650	3,700	3,600	3,500	3,900	4,000	4,100	3,900	3,600
ADRO	1,910	-28.60	0.00	Trading	58.1	45.7	(9.5)	1,930	1,880	1,880	1,850	1,810	1,950	1,990	2,020	1,960	1,830
AISA	680	-12.82	0.00	Trading	58.3	43.4	2.5	695	660	660	640	630	690	700	720	690	650
ANTM	1,640	-33.74	1.23	OverSold	34.8	44.5	(9.3)	1,650	1,600	1,620	1,600	1,590	1,650	1,660	1,680	1,650	1,580
ASII	70,900	30.33	4.26	OverBought	68.6	57.2	603.6	72,300	67,950	69,700	68,500	67,700	71,700	72,500	73,700	71,600	67,000
BBCA	7,900	22.48	2.60	OverSold	29.2	45.7	(66.5)	8,050	7,400	7,750	7,600	7,500	8,000	8,100	8,250	7,950	7,450
BBNI	3,800	0.00	4.11	OverBought	75.0	47.8	(35.8)	3,875	3,650	3,750	3,700	3,675	3,825	3,850	3,900	3,800	3,550
BBRI	6,500	25.60	-2.26	OverSold	23.8	46.7	11.8	6,700	6,350	6,450	6,400	6,300	6,600	6,700	6,750	6,750	6,350
BDMN	4,400	-20.00	1.73	Trading	57.7	37.4	(110.4)	4,450	4,375	4,325	4,225	4,150	4,500	4,575	4,675	4,475	4,275
BISI	860	-54.01	-4.44	Accumulate	21.7	32.2	(28.9)	890	835	855	850	845	865	870	875	900	840
BMRI	6,400	-0.78	-3.76	OverSold	30.8	44.7	(59.4)	6,700	6,250	6,300	6,200	6,050	6,550	6,700	6,800	6,700	6,300
BSDE	850	-3.41	-5.56	Accumulate	20.0	39.7	(2.8)	915	830	830	805	790	870	885	910	920	820
BTEL	280	19.15	5.66	StrongSell	80.0	50.4	(5.9)	287	257	267	254	242	292	304	317	290	245
BUMI	2,000	-36.00	-1.23	StrongBuy	17.5	39.7	(44.9)	2,070	1,960	1,980	1,960	1,940	2,030	2,050	2,070	2,100	1,980
BWPT	1,190	-9.16	3.48	OverSold	25.0	50.3	3.4	1,200	1,120	1,170	1,140	1,130	1,210	1,220	1,250	1,190	1,130
ELTY	105	-34.78	-0.94	Accumulate	21.1	36.4	(2.4)	108	104	104	103	101	107	109	110	108	103
EXCL	4,650	-11.43	1.09	Accumulate	28.1	37.6	(132.8)	4,700	4,550	4,600	4,550	4,500	4,700	4,750	4,800	4,750	4,500
GGRM	65,000	58.34	7.08	Trading	52.9	60.8	1,047.6	66,150	59,350	63,400	61,800	61,000	65,800	66,600	68,200	65,000	60,000
HEXA	8,300	14.48	4.40	StrongSell	81.0	53.5	80.8	8,450	8,050	8,250	8,200	8,150	8,350	8,400	8,450	8,300	7,900
HRUM	6,700	-29.10	-12.42	Accumulate	24.5	34.4	(119.5)	7,650	6,350	6,600	6,500	6,250	6,950	7,200	7,300	7,650	6,700
INCO	3,050	-38.69	-3.17	Accumulate	24.1	39.3	(51.3)	3,150	3,000	3,000	2,950	2,875	3,125	3,200	3,250	3,200	3,000
INDF	4,700	-5.05	-0.53	Accumulate	30.8	37.1	(119.7)	4,725	4,675	4,625	4,550	4,475	4,775	4,850	4,925	4,775	4,600
INDY	2,175	-57.35	2.35	Trading	42.3	37.0	(109.6)	2,225	2,050	2,125	2,075	2,025	2,225	2,275	2,325	2,225	2,000
INTP	15,000	-6.54	0.67	OverSold	29.8	49.4	1.4	15,250	14,450	14,800	14,550	14,400	15,200	15,350	15,600	15,150	14,500
ISAT	5,350	-1.83	5.94	OverSold	31.3	45.6	7.8	5,400	5,050	5,200	5,050	4,850	5,550	5,750	5,900	5,550	5,050
ITMG	38,150	-29.74	-8.40	Accumulate	21.9	33.5	(760.1)	41,000	35,750	37,800	37,450	37,100	38,500	38,850	39,200	41,900	36,250
JSMR	3,875	9.15	0.65	Trading	40.0	48.8	(12.2)	3,925	3,750	3,850	3,825	3,800	3,900	3,925	3,950	3,875	3,750
KLBF	3,525	6.02	4.44	OverBought	60.0	54.2	7.9	3,625	3,375	3,475	3,425	3,375	3,575	3,625	3,675	3,575	3,350
LSIP	2,375	-6.50	1.06	TakeProfit	70.0	62.1	69.5	2,425	2,325	2,350	2,325	2,300	2,400	2,425	2,450	2,375	2,300
MAPI	5,250	89.19	0.00	Trading	50.0	55.7	117.5	5,400	5,200	5,200	5,100	5,050	5,350	5,400	5,500	5,450	5,100
PGAS	3,075	-31.28	4.24	Trading	58.3	54.6	19.8	3,150	2,875	3,050	3,000	2,975	3,125	3,150	3,200	3,100	2,850
PTBA	17,000	-29.02	0.00	StrongBuy	19.4	43.3	(85.6)	17,100	16,650	16,800	16,600	16,500	17,100	17,200	17,400	17,300	16,500
RALS	600	-30.23	7.14	OverBought	72.7	47.0	(17.8)	625	570	590	575	560	620	635	650	620	540
SGRO	3,000	-7.69	0.84	Trading	50.0	50.5	9.2	3,050	2,950	2,975	2,950	2,925	3,025	3,050	3,075	3,050	2,900
SMCB	1,890	-15.06	4.42	StrongSell	82.1	57.4	(2.3)	1,940	1,810	1,880	1,860	1,840	1,920	1,940	1,960	1,920	1,780
SMGR	9,250	-6.09	5.71	Trading	51.6	50.8	3.3	9,400	8,700	9,100	8,950	8,850	9,350	9,450	9,600	9,250	8,650
SMRA	1,060	-1.85	0.95	OverSold	27.6	40.2	(18.7)	1,080	1,010	1,040	1,020	1,010	1,070	1,080	1,100	1,080	990
TINS	1,730	-39.30	0.00	Accumulate	29.2	38.8	(36.8)	1,750	1,710	1,720	1,710	1,690	1,750	1,770	1,780	1,750	1,700
TLKM	7,350	-8.13	-2.65	StrongBuy	10.0	36.2	(19.0)	7,550	7,100	7,250	7,150	7,050	7,450	7,550	7,650	7,550	7,150
UNTR	23,350	-3.91	-5.08	OverSold	31.9	49.0	155.0	24,850	22,950	22,900	22,450	21,550	24,250	25,150	25,600	24,750	23,350
UNVR	18,200	13.40	4.00	StrongSell	88.8	74.5	470.3	18,600	17,350	17,400	16,550	16,100	18,700	19,150	20,000	18,400	16,600

S1 = Support 1 S2 = Support 2 S3 = Support 3
 R1 = Resisten 1 R2 = Resisten 2 R2 = Resisten 2
 STO = Stochastic Oscillator
 RSI = Relative Strength Index
 MACD = Moving Average Convergence Divergence
 H-5 = 5 hari sebelumnya

RESEARCH TEAM

Andrian Tanuwijaya	Equity Analyst	(andrian.tanuwijaya@trimegah.com)
Hanel Topada Era Tania	Equity Analyst	(hanel.tania@trimegah.com)
Paul Raymond Widjaja	Equity Analyst	(paul.widjaja@trimegah.com)
Michele Gabriela	Equity Analyst	(michele.gabriela@trimegah.com)
T Hedy Arifien	Technical Analyst	(hedy@trimegah.com)
Rovandi	Research Assistant	(rovandi@trimegah.com)

EQUITY CAPITAL MARKET TEAM

Nathanael Benny Prasetyo	Head of Retail ECM	(benny.prasetyo@trimegah.com)
Windra Djulnaily	Pluit, Jakarta	(windra.djulnaily@trimegah.com)
Ariawan Anwar	Artha Graha, Jakarta	(ariawan.anwar@trimegah.com)
Ferry Zabur	Kelapa Gading, Jakarta	(ferry.zabur@trimegah.com)
Wirjawan Joesoef	Mangga Dua, Jakarta	(iwan@trimegah.com)
Lukman Abdul Azis	Kebon Jeruk, Jakarta	(lukman@trimegah.com)
Untung Wijaya	Semarang, Jawa Tengah	(untung.wijaya@trimegah.com)
Sonny Muljadi	Surabaya, Jawa Timur	(sonny.muljadi@trimegah.com)
Ni luh Ketut Sri Agustini	Denpasar, Bali	(sri.agustini@trimegah.com)
Philip Fernando Suwandi	Makassar, Sulawesi Selatan	(philip.fs@trimegah.com)
agus.jatmiko	Balikpapan, Kalimantan Timur	(agus.jatmiko@trimegah.com)
Asep Saepudin	Bandung, Jawa Barat	(asep.saepudin@trimegah.com)
Ariffianto	Cirebon, Jawa Barat	(ariffianto@trimegah.com)
Very Wijaya	Medan, Sumatera Utara	(very.wijaya@trimegah.com)
Tantie Rivi Watie	Pekanbaru, Riau	(tantierw@trimegah.com)
Agus Bambang Suseno	Solo, Jawa Tengah	(agus.suseno@trimegah.com)
Untung Wijaya	Yogyakarta, Jawa Tengah	(untung.wijaya@trimegah.com)
Donny Kristanto Setiadi	Palembang, Sumatra Selatan	(donny.kristanto@trimegah.com)
Rr. Putri Ayu Erikusuma	Malang, Jawa Timur	(putri.ayu@trimegah.com)

PT Trimegah Securities Tbk
18th Fl, Artha Graha Building
Jl. Jend. Sudirman Kav. 52-53
Jakarta 12190, INDONESIA
Tel : (6221) 2924 9088 Fax : (6221) 2924 9163

DISCLAIMER

This report has been prepared by PT Trimegah Securities Tbk on behalf of itself and its affiliated companies and is provided for information purposes only. Under no circumstances is it to be used or considered as an offer to sell, or a solicitation of any offer to buy. This report has been produced independently and the forecasts, opinions and expectations contained herein are entirely those of Trimegah Securities.

While all reasonable care has been taken to ensure that information contained herein is not untrue or misleading at the time of publication, Trimegah Securities makes no representation as to its accuracy or completeness and it should not be relied upon as such. This report is provided solely for the information of clients of Trimegah Securities who are expected to make their own investment decisions without reliance on this report. Neither Trimegah Securities nor any officer or employee of Trimegah Securities accept any liability whatsoever for any direct or consequential loss arising from any use of this report or its contents. Trimegah Securities and/or persons connected with it may have acted upon or used the information herein contained, or the research or analysis on which it is based, before publication. Trimegah Securities may in future participate in an offering of the company's equity securities.