

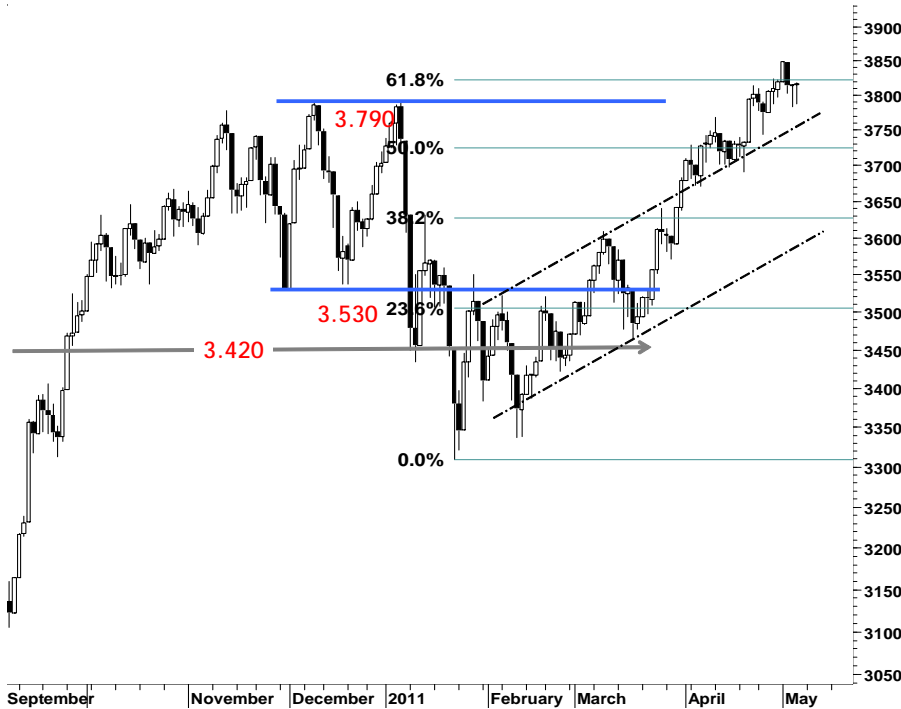
IHSG

3.816,3

1,3

0,04%

Ulisan Pasar



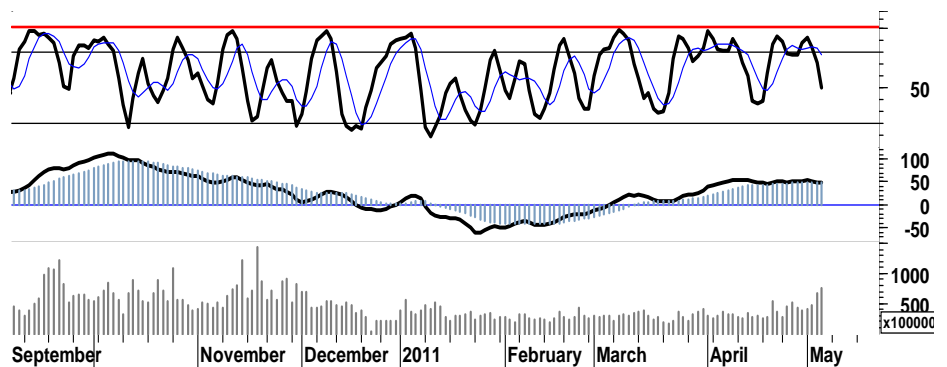
Berlanjutnya tekanan jual dan aksi profit taking di tengah positifnya sentimen pertumbuhan ekonomi domestik yang meningkat, laju penguatan IHSG masih tertahan pada area fibonacci retracement 62% dengan hanya membukukan kenaikan tipis sebesar 1,3 poin di level 3.816. Meskipun pada saat bersamaan, para investor asing masih mencatatkan akumulasi pembelian bersih sebesar Rp134miliar mengiringi bargain hunting posisi pada sejumlah saham unggulan yang telah mengalami tekanan yang cukup dalam. Yang juga di tandai oleh pertumbuhan rasio volume perdagangan sebesar 41%.

Distribusi volume transaksi yang masih berada pada area positif serta beberapa katalis yang juga masih berada pada area berimbang, diharapkan mampu menahan laju tekanan yang mungkin masih akan membayangi perjalanan pembentukan harga di perdagangan hari ini. Dimana kondisi secara umum, IHSG-pun masih

berada pada kondisi bullish serta belum terlihat adanya indikasi tekanan yang bersifat masive.

Kami perkirakan, IHSG pada perdagangan hari ini akan mencoba bertahan dalam interval pergerakan harga 3.775 - 3.825.

S1	S2	R1	R2
3,795	3,780	3,825	3,835



Saham Pilihan

Saham	Harga (Rp)	Rekomendasi	Stochastic	RSI	BB Top	BB Bottom	S1	S2	R1	R2
ANTM	2,225	Accumulate	27.27	39.52	2,300	2,200	2,200	2,175	2,275	2,300
BBNI	3,875	Accumulate	8.33	42.54	4,100	3,825	3,850	3,825	3,975	4,000
BSDE	920	Trading	50.00	64.89	930	895	910	895	935	950
BUMI	3,625	StrongSell	96.55	74.46	3,700	3,400	3,600	3,550	3,700	3,750
INCO	4,875	StrongBuy	13.33	47.53	5,000	4,825	4,850	4,825	4,925	4,950
TINS	2,800	TradingBuy	35.29	49.54	2,900	2,775	2,800	2,775	2,825	2,850

ANTM

2,225

Accumulate



Ditutup pada pivot support 2.225, menempatkan ANTM berada pada kondisi berimbang.

Akumulasi dapat dilakukan apabila ANTM berhasil melakukan pergerakan menembus resistensi 2.250.

S1	S2	R1	R2
2,200	2,175	2,275	2,300

BBNI

3,875

Accumulate



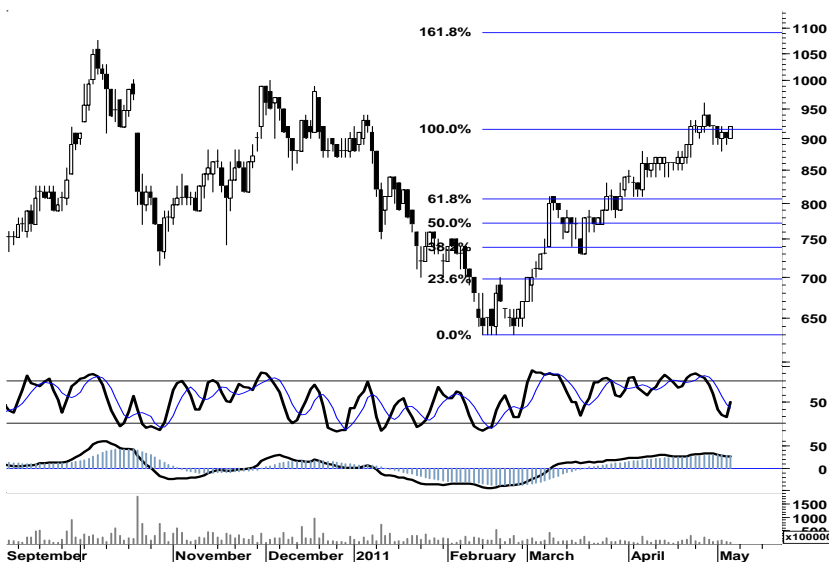
Akumulasi dapat dilakukan saat BBNI menguji support pada retracement 38% atau di kisaran 3.800 - 3.825.

S1	S2	R1	R2
3,850	3,825	3,975	4,000

BSDE

920

Trading



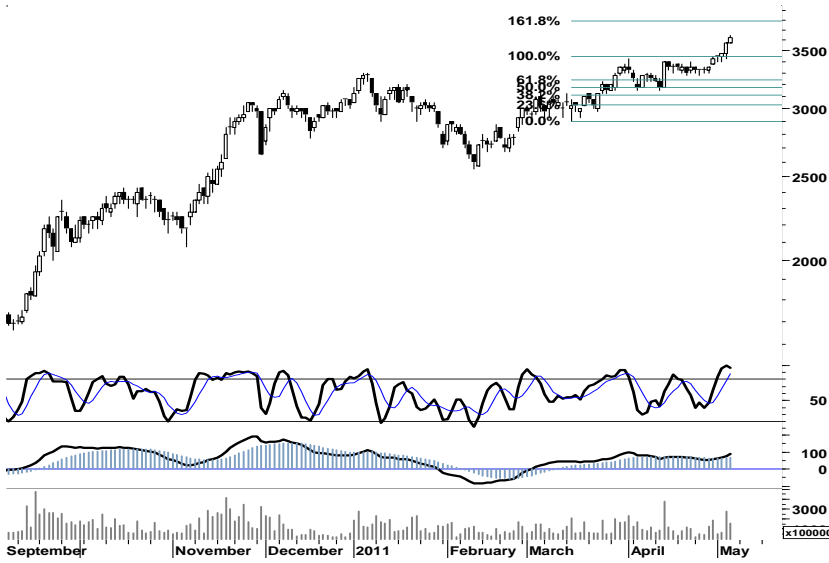
Golden cross yang terbentuk pada stochastic oscillator kemarin, merupakan momentum bagi BSDE untuk melanjutkan penguatan menguji resistensi 950.

S1	S2	R1	R2
910	895	935	950

BUMI

3,625

StrongSell



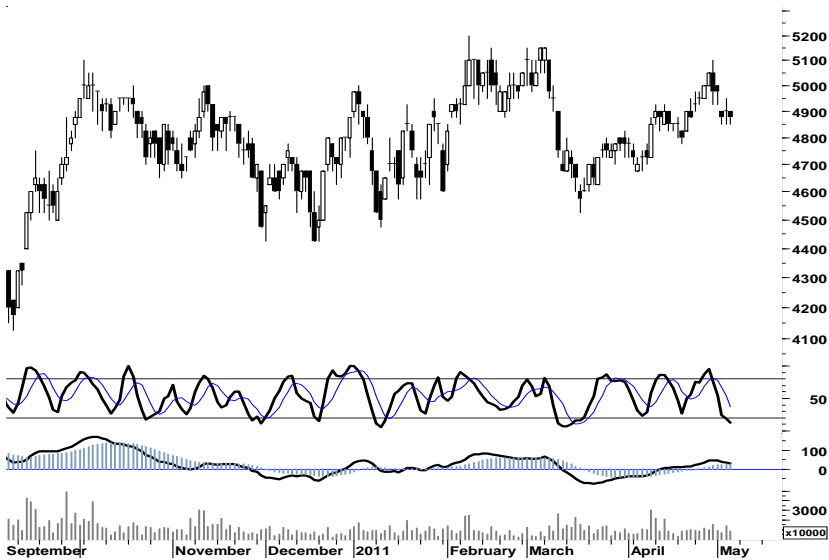
Sekalipun alur distribusi masih menunjukkan terbukanya peluang menguji peak area 3.800, waspadai probabilita tekanan yang akan menekan pergerakan BUMI menuju support 3.550.

S1	S2	R1	R2
3,600	3,550	3,700	3,750

INCO

4,875

StrongBuy



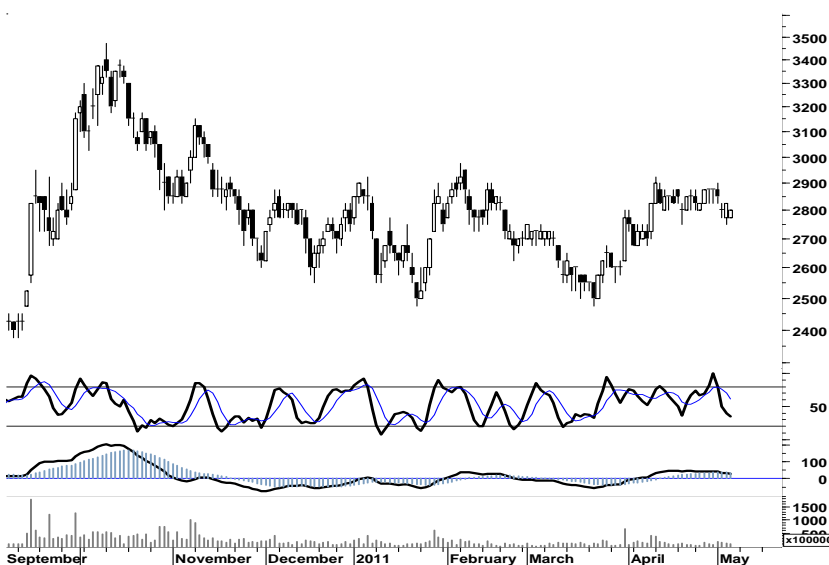
Mencoba bertahan pada area positif oversold, membuka peluang INCO untuk menguji resistensi 4.925.

S1	S2	R1	R2
4,850	4,825	4,925	4,950

TINS

2,800

TradingBuy



Dengan memperketat stop-loss trading di level support 2.750, TINS memiliki peluang untuk bergerak menuju resistensi 2.850.

S1	S2	R1	R2
2,800	2,775	2,825	2,850

TRADE DATA

JCI (IHSG) 3,816.3 1.3 0.04%

YTD (Rp)	3.0% Volume (m) :	7,948
YTD (USD)	7.4% Nilai (Rpbn) :	5,920
Moving Avg 20day	3,773 Mkt Cap (Rpbn) :	3,399
Moving Avg 50day	3,649 Market P/E (x) :	16.5
Moving Avg 200day	3,490 Market Div. Yield (%) :	2.4

Indonesia & Sectors +/- (%) YTD (%)

MSCI Indonesia	4,752.6	-11.7	-0.25	4.53
JII	526.8	-0.4	-0.07	-1.14
LQ45	680.9	-0.7	-0.10	2.95
JAKFIN Index	502.4	-4.2	-0.01	7.65
JAKINFR Index	799.4	0.6	0.00	-2.42
JAKMINE Index	3,302.1	20.2	0.01	0.85
JAKCONS Index	1,116.2	1.3	0.00	1.97
JAKTRAD Index	506.1	1.5	0.00	6.76
JAKMIND Index	1,013.0	-1.1	-0.00	4.75
JAKBIND Index	398.7	3.2	0.01	2.96
JAKPROP Index	207.3	1.0	0.00	2.08
JAKAGRI Index	2,248.7	22.8	0.01	-1.56

Commodities +/- (%) YTD (%)

CRB Index	341.07	-17.6	-4.90	2.48
Oil & Gas				
Crude Oil	99.80	-9.4	-8.64	9.21
Natural Gas	4.26	-0.3	-6.90	-3.27
COAL (Rotterdam)	125.80	-2.4	-1.87	-4.26
COAL (Amsterdam)	127.14	-1.9	-1.44	0.94
COAL (Australia,wk)	122.80	0.0	0.00	0.33
Industrial Metals				
Alumunium	2,620.5	-118.3	-4.32	6.56
Nickel	24,525	-1,300	-5.03	-0.91
Tin	28,900	-2,050	-6.62	7.43
Precious Metal				
Gold	1,481.40	-33.9	-2.24	4.22
Silver	36.24	-3.1	-7.99	17.24
Soft Commodities				
CPO (Malaysia)	3,285.00	-24.0	-0.73	-13.87
CPO (Netherlands)	1,140.00	0.0	0.00	-11.28
Rubber	5,282.88	35.4	0.67	5.79
Corn	708.75	-20.8	-2.84	12.68
Wheat	754.00	-18.0	-2.33	-5.07
Soybeans	1,321.75	-30.3	-2.24	-5.17
Rice (Indonesia)	6,600.00	0.0	0.00	-7.04

Winners

Losers

Stock	Price	(%)	Stock	Price	(%)
SMAR	5,600	5.66	PTRO	34,000	-9.33
BTPN	2,950	5.36	TSPC	2,050	-3.53
INDY	4,175	3.73	BBCA	7,150	-2.72
ADRO	2,325	3.33	TLKM	7,500	-1.96
BNII	630	3.28	BBNI	3,875	-1.90
INTP	17,050	2.71	BDMN	6,100	-1.61
PGAS	4,250	2.41	BBRI	6,300	-1.56
BUMI	3,625	1.40	PTBA	22,100	-1.12
ITMG	47,700	1.38	EXCL	6,300	-0.79
SMGR	9,500	1.06	ASII	56,250	-0.27

Regional Indices +/- (%) YTD (%)

MXWO	MSCI Word	1,355.5	-15.9	-1.16	5.89
SPX	S&P 500	1,335.1	-12.2	-0.91	6.16
US					
Dow Jones Industrial		12,584.2	-139.4	-1.10	8.69
Nasdaq	US	2,814.7	-13.5	-0.48	6.10
Europe					
EURO 50	Europe	277.8	-0.7	-0.26	0.72
FTSE	London	5,920.0	-64.1	-1.07	0.34
DAX	German	7,377.0	3.0	0.04	6.69
CAC	France	4,004.9	-38.3	-0.95	5.26
SMI	Swiss	6,450.0	-20.3	-0.31	0.22
BRIC					
BOVESPA	Brazil	63,407.0	-208.5	-0.33	-8.51
MICEX	Russia	1,644.9	-12.6	-0.76	-2.55
SENSEX	India	18,210.6	-258.8	-1.40	-11.21
NIFTY	India	5,459.9	-77.3	-1.40	-11.00
SHCOMP	China	2,872.4	6.4	0.22	2.29
SZCOMP	China	1,190.8	3.5	0.30	-7.75

Developed ASIA

Nikkei	Japan	10,004.2	0.0	0.00	-2.20
TPX	Japan	865.6	0.0	0.00	-3.70
HIS	Hong kong	23,261.6	-53.6	-0.23	0.98
KOSPI	S. Korea	2,180.6	0.0	0.00	6.32
TAIEX	Taiwan	9,018.6	71.3	0.80	0.51
FSSTI	Singapore	3,109.9	-3.9	-0.13	-2.51
ASEAN					
SET	Thailand	1,073.9	0.0	0.00	3.98
PCOMP	Philippines	4,248.7	-49.5	-1.15	1.13
KLCI	Malaysia	1,521.2	-7.3	-0.47	0.15
VNINDEX	Vietnam	479.3	-7.3	-1.50	-1.11

Currency +/- (%) YTD (%)

EURUSD	Euro	1.454	-0.029	-1.94	8.63
GBPUSD	United Kingdom	1.639	-0.010	-0.60	4.98
USDCHF	Switzerland	0.871	0.009	1.03	-6.91
USDCAD	Canada	0.967	0.007	0.78	-3.12
AUDUSD	Australia	1.058	-0.017	-1.56	3.38
NZDUSD	New Zealand	0.784	-0.005	-0.68	0.53
USDJPY	Japan	80.1	-0.540	-0.67	-1.29
USDCNY	China	6.494	0.001	0.01	-1.71
USDHKD	Hongkong	7.772	0.001	0.02	-0.02
USDSGD	Singapore	1.241	0.010	0.79	-3.28
Rupiah	Indonesia	8,572.0	19.000	0.22	-4.71

Value

(Rpbn)

Volume

(Lot)

Freq

(x)

BUMI	551,788	BNBR	3,289,058	INAF	11,790
ADRO	551,006	ELTY	2,365,997	TMPO	9,322
PGAS	355,901	ENRG	812,759	ADRO	7,737
INDY	324,415	TRUB	796,270	ELSA	6,652
BMRI	219,017	ADRO	470,401	ELTY	5,770
TLKM	215,609	INAF	432,872	BNBR	5,030
ELTY	176,112	BLTA	423,274	PRAS	4,569
BBRI	127,541	DEWA	327,873	MFMI	3,626
BBNI	126,392	BUMI	305,199	TOTL	3,269
BNBR	124,926	TMPO	254,433	BUMI	3,116

Code	Last	Ytd Chg(%)	H-5 Chg (%)	Rekomendasi	STO	RSI	MACD	Bollinger Band		Support			Resistance			H-5	
								Top	Bottom	1	2	3	1	2	3	Highest	Lowest
AALI	23,650	-11.75	2.16	TakeProfit	73.9	61.7	298.3	24,400	23,200	23,550	23,400	23,300	23,800	23,900	24,050	24,100	22,950
ACES	2,650	-7.02	0.00	Trading	50.0	60.5	25.5	2,650	2,650	2,650	2,650	2,650	2,650	2,650	2,650	2,700	2,600
ADRO	2,325	-13.08	4.49	OverBought	66.7	58.8	(11.0)	2,350	2,200	2,275	2,200	2,150	2,400	2,450	2,525	2,375	2,200
AKRA	1,670	-1.76	-2.34	OverSold	37.5	63.1	44.2	1,710	1,650	1,660	1,640	1,630	1,690	1,700	1,720	1,720	1,640
ANTM	2,225	-10.10	-3.26	Accumulate	27.3	39.5	(9.0)	2,300	2,200	2,200	2,175	2,150	2,250	2,275	2,300	2,300	2,200
ASII	56,250	3.40	1.17	OverBought	71.4	53.0	97.7	56,700	55,950	56,050	55,800	55,550	56,550	56,800	57,050	56,700	55,200
BBCA	7,150	10.85	-5.92	Trading	22.2	46.7	97.1	7,550	7,050	7,150	7,100	7,050	7,250	7,300	7,350	7,600	7,100
BBNI	3,875	1.97	-4.32	Accumulate	8.3	42.5	32.1	4,100	3,825	3,850	3,825	3,775	3,925	3,975	4,000	4,125	3,875
BBRI	6,300	21.74	-3.82	Trading	31.6	56.8	204.8	6,600	6,250	6,250	6,200	6,150	6,350	6,400	6,450	6,600	6,250
BBTN	1,660	-0.60	-2.92	OverSold	22.0	45.2	11.3	1,720	1,610	1,620	1,580	1,560	1,680	1,700	1,740	1,760	1,600
BDMN	6,100	10.91	-1.61	Accumulate	31.3	37.7	(77.7)	6,250	6,050	6,050	6,000	5,900	6,200	6,300	6,350	6,300	6,050
BISI	1,560	-16.58	-7.69	TradingBuy	7.1	34.7	(4.9)	1,690	1,520	1,540	1,520	1,490	1,590	1,620	1,640	1,730	1,540
BMRI	7,200	11.63	2.13	Trading Sell	66.7	62.5	192.0	7,400	7,100	7,100	7,000	6,950	7,250	7,300	7,400	7,350	7,000
BSDE	920	4.55	0.00	Trading	50.0	64.9	26.1	930	895	910	895	890	930	935	950	940	880
BTEL	385	63.83	0.00	StrongSell	83.3	67.6	9.9	388	380	379	372	369	389	392	399	385	375
BUMI	3,625	16.00	8.21	StrongSell	96.6	74.5	82.2	3,700	3,400	3,600	3,550	3,525	3,675	3,700	3,750	3,650	3,300
CTRA	375	7.14	-3.85	StrongBuy	14.3	50.8	6.0	393	369	374	372	369	379	382	384	400	375
ELTY	150	-6.83	4.17	TakeProfit	60.9	69.8	1.7	151	143	146	142	139	153	156	160	152	142
EXCL	6,300	20.00	-6.67	StrongBuy	13.3	54.1	205.5	6,900	6,050	6,200	6,050	5,950	6,450	6,550	6,700	7,100	6,150
GGRM	40,950	-0.24	1.74	OverBought	75.8	56.7	87.3	41,200	40,600	40,800	40,600	40,400	41,200	41,400	41,600	41,200	40,100
HEXA	6,150	-15.17	7.89	OverBought	79.2	59.0	(71.4)	6,300	5,500	5,950	5,750	5,600	6,300	6,450	6,650	6,200	5,550
INCO	4,875	-2.01	-3.47	StrongBuy	13.3	47.5	26.0	5,000	4,825	4,850	4,825	4,800	4,900	4,925	4,950	5,100	4,850
INDF	5,600	13.13	0.00	OverSold	38.5	62.7	98.2	5,650	5,500	5,550	5,450	5,350	5,750	5,850	5,950	5,750	5,450
INDY	4,175	-18.14	3.73	TakeProfit	68.8	61.7	22.7	4,200	4,000	4,050	3,925	3,850	4,250	4,325	4,450	4,200	4,000
INTP	17,050	6.23	-0.29	OverSold	37.5	56.7	286.2	17,300	16,600	16,700	16,350	16,150	17,250	17,450	17,800	17,300	16,500
ISAT	5,400	-0.92	3.85	OverBought	70.0	57.4	40.0	5,450	5,350	5,400	5,350	5,350	5,450	5,450	5,500	5,500	5,150
ITMG	47,700	-12.15	1.38	OverBought	71.6	54.0	20.9	47,900	46,750	47,150	46,550	46,250	48,050	48,350	48,950	47,750	46,500
JSMR	3,425	-3.52	3.79	StrongSell	85.7	61.1	10.9	3,500	3,325	3,400	3,350	3,325	3,475	3,500	3,550	3,450	3,250
KLBF	3,575	7.52	0.00	Trading	44.4	56.3	65.7	3,625	3,525	3,550	3,525	3,500	3,600	3,625	3,650	3,600	3,525
LSIP	2,475	-2.56	4.21	OverBought	70.0	59.4	36.9	2,550	2,450	2,450	2,425	2,400	2,500	2,525	2,550	2,525	2,350
MYOR	11,650	7.87	2.64	StrongSell	86.0	58.9	254.0	12,200	11,050	11,550	11,450	11,300	11,800	11,950	12,050	11,900	10,900
PGAS	4,250	-5.03	6.92	StrongSell	92.3	74.4	82.6	4,325	4,025	4,175	4,100	4,050	4,300	4,350	4,425	4,250	3,975
PTBA	22,100	-7.72	-1.34	StrongBuy	11.5	53.7	224.6	22,450	22,050	22,000	21,900	21,650	22,350	22,600	22,700	22,600	22,100
RALS	720	-16.28	-4.00	Accumulate	33.3	34.6	(16.0)	745	720	715	710	695	735	750	755	750	710
SGRO	3,525	8.46	9.30	TakeProfit	72.7	69.4	109.9	3,650	3,375	3,450	3,350	3,300	3,600	3,650	3,750	3,600	3,225
SMCB	2,200	-1.12	-3.30	Trading	41.2	58.8	57.0	2,250	2,175	2,175	2,150	2,125	2,225	2,250	2,275	2,300	2,150
SMGR	9,500	-3.55	0.53	Trading	46.2	56.0	86.8	9,600	9,400	9,400	9,300	9,200	9,600	9,700	9,800	9,600	9,350
SMRA	1,200	11.11	-3.23	OverSold	25.0	56.7	35.5	1,270	1,170	1,190	1,180	1,170	1,210	1,220	1,230	1,270	1,190
TINS	2,800	-1.75	-2.61	TradingBuy	35.3	49.5	28.4	2,900	2,775	2,800	2,775	2,775	2,825	2,825	2,850	2,900	2,750
TLKM	7,500	-6.25	-1.96	Trading	46.7	51.1	116.4	7,800	7,500	7,450	7,350	7,250	7,650	7,750	7,850	7,750	7,450
UNTR	24,350	0.21	4.28	StrongSell	89.1	70.5	359.8	24,950	23,000	24,200	24,050	23,850	24,550	24,750	24,900	24,550	23,100
UNVR	15,000	-6.54	-1.96	Accumulate	21.7	35.7	(140.4)	15,400	14,850	14,900	14,800	14,750	15,050	15,100	15,200	15,350	14,850

S1 = Support 1 S2 = Support 2 S3 = Support 3
 R1 = Resisten 1 R2 = Resisten 2 R2 = Resisten 2
 STO = Stochastic Oscillator
 RSI = Relative Strength Index
 MACD = Moving Average Convergence Divergence
 H-5 = 5 hari sebelumnya

RESEARCH TEAM

Andrian Tanuwijaya	Equity Analyst	(andrian.tanuwijaya@trimegah.com)
Hanel Topada Era Tania	Equity Analyst	(hanel.tania@trimegah.com)
T Heldy Arifien	Technical Analyst	(heldy@trimegah.com)
Rovandi	Research Assistant	(rovandi@trimegah.com)

EQUITY CAPITAL MARKET TEAM

Nathanael Benny Prasetyo	Head of Retail ECM	(benny.prasetyo@trimegah.com)
Windra Djulnaily	Pluit, Jakarta	(windra.djulnaily@trimegah.com)
Ariawan Anwar	Artha Graha, Jakarta	(ariawan.anwar@trimegah.com)
Ferry Zabur	Kelapa Gading, Jakarta	(ferry.zabur@trimegah.com)
Wirjawan Joesoef	Mangga Dua, Jakarta	(iwan@trimegah.com)
Lukman Abdul Azis	Kebon Jeruk, Jakarta	(lukman@trimegah.com)
Tutik Suciati	Semarang, Jawa Tengah	(tuty.s@trimegah.com)
Sonny Muljadi	Surabaya, Jawa Timur	(sonny.muljadi@trimegah.com)
Ni Luh Ketut Sri Agustini	Denpasar, Bali	(sri.agustini@trimegah.com)
Philip Fernando Suwandi	Makassar, Sulawesi Selatan	(philip.fs@trimegah.com)
agus.jatmiko	Balikpapan, Kalimantan Timur	(agus.jatmiko@trimegah.com)
Asep Saepudin	Bandung, Jawa Barat	(asep.saepudin@trimegah.com)
Asep Saepudin	Cirebon, Jawa Barat	(asep.saepudin@trimegah.com)
Very Wijaya	Medan, Sumatera Utara	(very.wijaya@trimegah.com)
Tantie Rivi Watie	Pekanbaru, Riau	(tantierw@trimegah.com)
Agus Bambang Suseno	Solo, Jawa Tengah	(agus.suseno@trimegah.com)
Agus Bambang Suseno	Yogyakarta, Jawa Tengah	(agus.suseno@trimegah.com)
Donny Kristanto Setiadi	Palembang, Sumatra Selatan	(donny.kristanto@trimegah.com)
Sonny Muljadi	Malang, Jawa Timur	(sonny.muljadi@trimegah.com)

PT Trimegah Securities Tbk
18th Fl, Artha Graha Building
Jl. Jend. Sudirman Kav. 52-53
Jakarta 12190, INDONESIA
Tel : (6221) 2924 9088 Fax : (6221) 2924 9163

DISCLAIMER

This report has been prepared by PT Trimegah Securities Tbk on behalf of itself and its affiliated companies and is provided for information purposes only. Under no circumstances is it to be used or considered as an offer to sell, or a solicitation of any offer to buy. This report has been produced independently and the forecasts, opinions and expectations contained herein are entirely those of Trimegah Securities.

While all reasonable care has been taken to ensure that information contained herein is not untrue or misleading at the time of publication, Trimegah Securities makes no representation as to its accuracy or completeness and it should not be relied upon as such. This report is provided solely for the information of clients of Trimegah Securities who are expected to make their own investment decisions without reliance on this report. Neither Trimegah Securities nor any officer or employee of Trimegah Securities accept any liability whatsoever for any direct or consequential loss arising from any use of this report or its contents. Trimegah Securities and/or persons connected with it may have acted upon or used the information herein contained, or the research or analysis on which it is based, before publication. Trimegah Securities may in future participate in an offering of the company's equity securities.