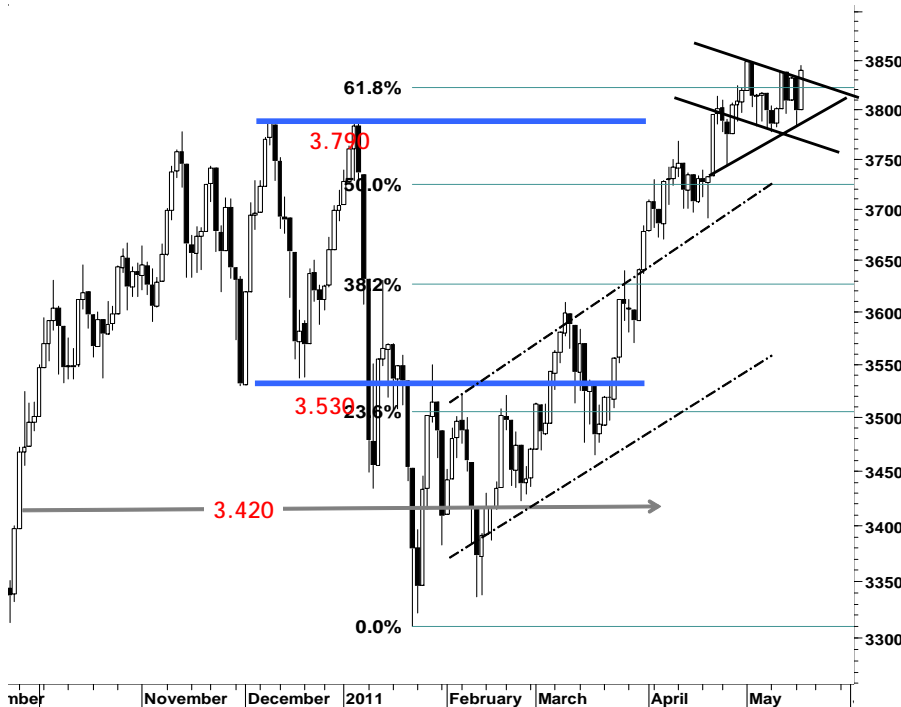


IHSG 3.840,2 41,0 1,08%

Ulusan Pasar



Aksi pembelian selektif terhadap sejumlah saham unggulan di sektor perbankan serta beberapa emiten berbasis komoditas, berhasil mendorong IHSG keluar dari zona merah sekaligus membukukan nilai positif sebesar 41 poin ditutup pada level 3.840.

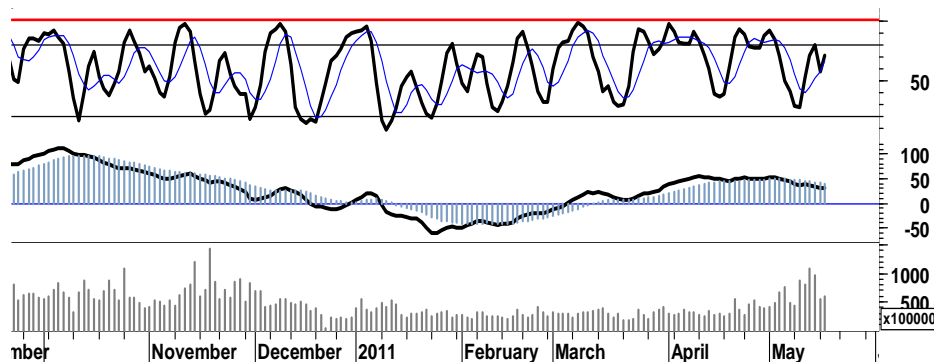
Kenaikan yang juga disertai oleh tumbuhnya tingkat rasio volume perdagangan sebesar 25%, merupakan indikasi signal positif yang diharapkan mampu untuk mendorong kembali IHSG melakukan penetrasi trend resisten 3.830 sekaligus bertumpu pada basis support harga di level 3.840.

Secara umum, IHSG masih berada pada kondisi bullish untuk jangka menengah maupun jangka panjang. Sementara untuk trading periode jangka pendek, sejumlah saham favorit maupun saham unggulan yang selama sepekan mengalami tekanan pelemahan yang cukup dalam seperti BUMI, LPKR, BBCA, DAVO, merupakan saham-saham yang cukup menarik untuk diperhatikan

dan diperkirakan memiliki peluang untuk memberikan kontribusi terhadap IHSG untuk melanjutkan penguatannya.

Sebagaimana tercermin pada signal positif leading indicator yang ada, IHSG diperkirakan akan mencoba bergerak menguji resistensi berikut pada level 3.850.

Perketat stop-loss harga pada level 3.750 untuk membatasi resiko yang mungkin muncul, apabila IHSG gagal menahan laju tekanan melalui basis support 3.780.



S1	S2	R1	R2
3,815	3,780	3,850	3,875

Saham Pilihan

Saham	Harga (Rp)	Rekomendasi	Stochastic	RSI	BB Top	BB Bottom	S1	S2	R1	R2
AALI	23,600	OverSold	21.95	57.10	24,050	23,250	23,450	23,300	24,100	24,250
ANTM	2,225	Trading	44.44	46.94	2,275	2,200	2,200	2,175	2,275	2,300
BBCA	7,150	OverSold	37.50	47.43	7,400	7,050	7,100	7,000	7,400	7,500
BUMI	3,500	OverSold	25.00	56.92	3,600	3,450	3,450	3,400	3,550	3,600
JSMR	3,475	Trading	50.00	64.31	3,500	3,425	3,425	3,375	3,575	3,625
SMCB	2,125	OverSold	33.33	49.91	2,200	2,000	2,075	2,000	2,200	2,275

AALI

23,600

OverSold



Tekanan jual yang terjadi pada perdagangan kemarin, merupakan salah satu signal negatif yang harus diperhatikan dengan memperketat stop loss harga pada level 22.950.

Bergerak neutral sekitar area oversold, AALI memiliki peluang untuk mencoba bertahan pada support 23.450 dan bergerak dalam interval harga 23.450 - 24.100.

S1	S2	R1	R2
23,450	23,300	24,100	24,250

ANTM

2,225

Trading



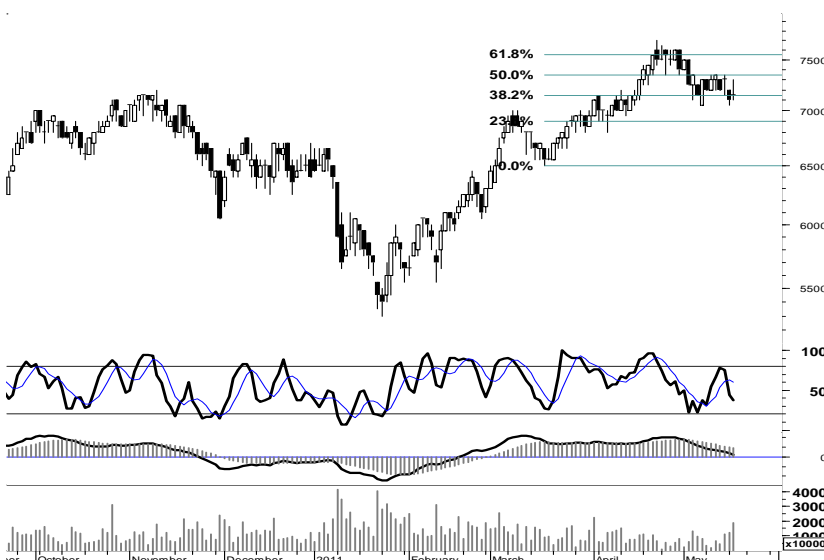
Dengan berbasis support kuat di level harga 2.175, ANTM memiliki peluang untuk menguji resistensi harga 2.250.

S1	S2	R1	R2
2,200	2,175	2,275	2,300

BBCA

7,150

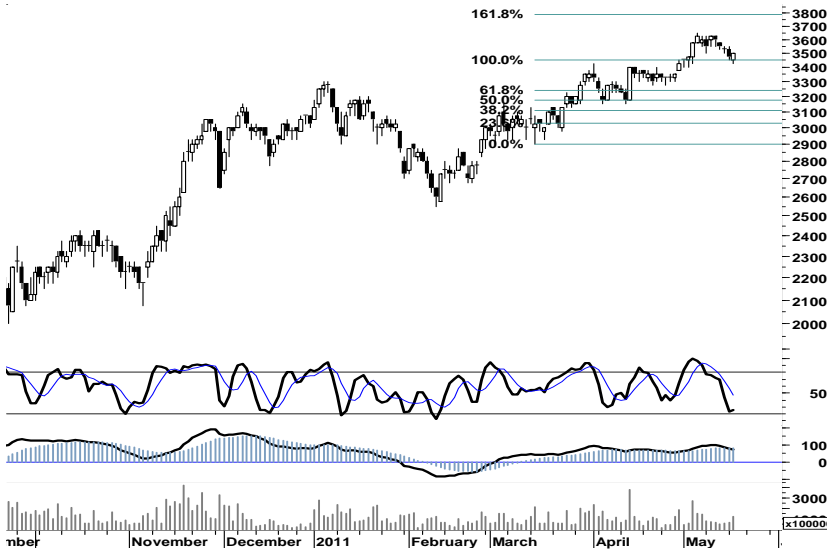
OverSold



Untuk dapat keluar dari zona negatif, BBCA diharapkan mampu untuk bergerak ke utara dengan memanfaatkan basis support harga 7.150.

BBCA pada perdagangan hari ini berpeluang untuk memanfaatkan ruang dalam interval harga 7.100 - 7.400.

S1	S2	R1	R2
7,100	7,000	7,400	7,500



Ditutup pada area pivot support 3.450 - 3.500, dengan dominasi minat beli yang cukup besar kemarin, membuka peluang bagi BUMI untuk menguji penetrasi 3.550.

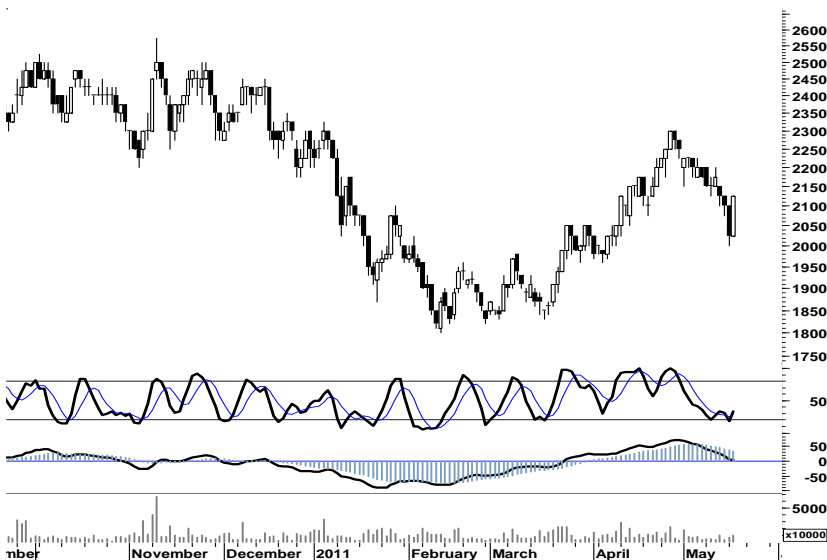
Dengan memperketat stop-loss pada level 3.350, BUMI memiliki peluang untuk memanfaatkan swing harga dalam interval 3.400 - 3.600.

S1	S2	R1	R2
3,450	3,400	3,550	3,600



Ditutup di area pivot support 3.475 serta dalam kondisi berimbang, signal positif leading indicator membuka peluang bagi JSMR untuk bergerak pada kisaran harga 3.375 - 3.575.

S1	S2	R1	R2
3,425	3,375	3,575	3,625



Waspada! potensi tekanan jual yang mungkin terjadi, dengan memperketat stop-loss harga pada level 1.950 - 1.960.

SMCB berpeluang untuk menguji penetrasi resisten harga pada level 2.200.

S1	S2	R1	R2
2,075	2,000	2,200	2,275

TRADE DATA

JCI (IHSG) 3,840.2 41.0 1.08%

YTD (Rp)	3.7%	Volume (m) :	5,822
YTD (USD)	8.7%	Nilai (Rpbn) :	5,434
Moving Avg 20day	3,806	Mkt Cap (Rptr) :	3,417
Moving Avg 50day	3,700	Market P/E (x) :	16.3
Moving Avg 200day	3,523	Market Div. Yield (%) :	2.4

Indonesia & Sectors +/- (%) YTD (%)

MSCI Indonesia	4,711.3	0.0	0.00	3.62
JII	531.3	6.4	1.21	-0.30
LQ45	684.5	8.4	1.25	3.50
JAKFIN Index	501.7	5.9	0.01	7.50
JAKINFR Index	798.9	2.5	0.00	-2.48
JAKMINE Index	3,244.5	40.2	0.01	-0.90
JAKCONS Index	1,141.9	10.8	0.01	4.32
JAKTRAD Index	500.3	6.9	0.01	5.52
JAKMIND Index	1,082.5	10.2	0.01	11.94
JAKBIND Index	400.4	5.8	0.01	3.39
JAKPROP Index	212.7	2.6	0.01	4.74
JAKAGRI Index	2,299.3	34.4	0.02	0.66

Commodities +/- (%) YTD (%)

CRB Index	344.21	7.7	2.30	3.43
Oil & Gas				
Crude Oil	100.10	3.2	3.29	9.54
Natural Gas	4.20	0.0	0.38	-4.70
COAL (Rotterdam)	121.55	-0.7	-0.53	-7.50
COAL (Amsterdam)	121.50	-1.1	-0.90	-3.53
COAL (Australia,wk)	117.15	0.0	0.00	-4.29
Industrial Metals				
Aluminium	2,538.5	54.0	2.17	3.22
Nickel	24,675	525	2.17	-0.30
Tin	28,355	480	1.72	5.41
Precious Metal				
Gold	1,495.80	15.8	1.07	5.23
Silver	35.10	1.6	4.80	13.55
Soft Commodities				
CPO (Malaysia)	3,400.00	11.0	0.32	-10.85
CPO (Netherlands)	1,142.50	-7.5	-0.65	-11.09
Rubber	4,933.89	-77.2	-1.54	-1.20
Corn	749.75	29.5	4.10	19.20
Wheat	817.00	53.0	6.94	2.86
Soybeans	1,379.50	38.5	2.87	-1.02
Rice (Indonesia)	6,750.00	0.0	0.00	-4.93

Winners

Stock	Price	(%)	Stock	Price	(%)
ADRO	2,350	4.44	FAST	10,000	-4.31
BBRI	6,350	3.25	BHIT	169	-2.87
UNTR	22,500	3.21	IMAS	8,550	-2.84
INDF	5,700	1.79	BAEK	2,100	-2.33
SMGR	9,450	1.61	GIAA	520	-1.89
BBNI	3,925	1.29	BRAU	540	-1.82
ASII	59,700	1.10	PGAS	3,975	-1.24
BMRI	7,100	0.71	DSSA	18,300	-1.08
BBCA	7,150	0.70	PNBN	1,080	-0.92
TLKM	7,750	0.65	BORN	1,540	-0.65

Losers

Stock	Price	(%)	Stock	Price	(%)
ADRO	2,350	4.44	FAST	10,000	-4.31
BBRI	6,350	3.25	BHIT	169	-2.87
UNTR	22,500	3.21	IMAS	8,550	-2.84
INDF	5,700	1.79	BAEK	2,100	-2.33
SMGR	9,450	1.61	GIAA	520	-1.89
BBNI	3,925	1.29	BRAU	540	-1.82
ASII	59,700	1.10	PGAS	3,975	-1.24
BMRI	7,100	0.71	DSSA	18,300	-1.08
BBCA	7,150	0.70	PNBN	1,080	-0.92
TLKM	7,750	0.65	BORN	1,540	-0.65

Regional Indices +/- (%) YTD (%)

MXWO	MSCI World	1,342.0	12.7	0.95	4.84
SPX	S&P 500	1,340.7	11.7	0.88	6.60
US					
Dow Jones Industrial		12,560.2	80.6	0.65	8.49
Nasdaq	US	2,815.0	31.8	1.14	6.11
Europe					
EURO 50	Europe	278.2	0.9	0.32	0.86
FTSE	London	5,923.5	62.5	1.07	0.40
DAX	Germany	7,303.5	46.9	0.65	5.63
CAC	France	3,978.0	36.4	0.92	4.55
SMI	Swiss	6,535.2	38.7	0.60	1.54
BRIC					
BOVESPA	Brazil	62,840.6	-832.7	-1.31	-9.33
MICEX	Russia	1,627.0	18.4	1.14	-3.61
SENSEX	India	18,086.2	-51.1	-0.28	-11.81
NIFTY	India	5,420.6	-18.3	-0.34	-11.64
SHCOMP	China	2,872.8	20.0	0.70	2.30
SZCOMP	China	1,202.7	5.7	0.47	-6.83

Developed ASIA

Nikkei	Japan	9,662.1	95.1	0.99	-5.54
TPX	Japan	838.0	9.1	1.10	-6.77
HIS	Hong kong	23,011.1	110.1	0.48	-0.11
KOSPI	S.Korea	2,135.8	33.4	1.59	4.13
TAIEX	Taiwan	8,944.8	60.8	0.68	-0.31
FSSTI	Singapore	3,141.2	4.7	0.15	-1.53

ASEAN

SET	Thailand	1,075.9	-9.0	-0.83	4.18
PCOMP	Philippines	4,303.3	41.7	0.98	2.43
KLCI	Malaysia	1,541.3	5.0	0.33	1.47
VNINDEX	Vietnam	454.9	-9.4	-2.03	-6.14

Currency +/- (%) YTD (%)

EURUSD	Euro	1.425	0.001	0.09	6.47
GBPUSD	United Kingdom	1.617	-0.008	-0.52	3.56
USDCHE	Switzerland	0.881	0.001	0.09	-5.81
USDCAD	Canada	0.970	-0.002	-0.21	-2.80
AUDUSD	Australia	1.063	0.000	0.01	3.86
NZDUSD	New Zealand	0.789	0.004	0.54	1.14
USDJPY	Japan	81.7	0.260	0.32	0.69
USDCNY	China	6.504	-0.002	-0.02	-1.55
USDHKD	Hongkong	7.774	0.000	0.00	0.02
USDSGD	Singapore	1.240	-0.006	-0.45	-3.37
Rupiah	Indonesia	8,563.0	-15.000	-0.17	-4.81

Value (Rpbn)

Value (Rpbn)	Volume (Lot)	Freq (x)
ADRO 448,229	BNBR 2,181,035	MFMI 9,492
BUMI 426,218	ELTY 1,749,860	ADRO 5,336
BBRI 356,213	ENRG 565,661	ELTY 5,308
EXCL 209,801	DEWA 395,606	LMPI 5,072
ASII 201,753	ADRO 385,257	JPRS 4,739
ITMG 194,457	TRUB 352,228	BNBR 4,165
BORN 156,411	BUMI 245,309	BORN 3,839
BMRI 152,298	BORN 203,061	BBRI 3,837
ELTY 150,993	CNKO 202,386	AKRA 2,246
BBCA 134,148	BKSL 195,463	ITMG 2,048

Code	Last	Ytd Chg(%)	H-5 Chg (%)	Rekomendasi	STO	RSI	MACD	Bollinger Band		Support			Resistance			H-5	
								Top	Bottom	1	2	3	1	2	3	Highest	Lowest
AALI	23,600	-11.94	-0.84	OverSold	22.0	57.1	258.0	24,050	23,250	23,450	23,300	23,050	23,850	24,100	24,250	24,200	23,450
ACES	2,700	-5.26	0.93	StrongSell	100.0	64.2	27.6	2,725	2,675	2,700	2,700	2,700	2,700	2,700	2,700	2,700	2,625
ADRO	2,350	-12.15	2.17	OverBought	66.7	56.9	4.8	2,375	2,225	2,300	2,225	2,200	2,400	2,425	2,500	2,350	2,200
AKRA	1,670	-1.76	4.38	TakeProfit	71.4	63.3	23.8	1,690	1,580	1,630	1,590	1,570	1,690	1,710	1,750	1,670	1,580
ANTM	2,225	-10.10	1.14	Trading	44.4	46.9	(17.1)	2,275	2,200	2,200	2,175	2,150	2,250	2,275	2,300	2,250	2,175
ASII	59,700	9.74	4.83	StrongSell	80.8	65.9	822.9	60,150	58,000	59,250	58,800	58,400	60,100	60,500	60,950	60,000	56,600
BBCA	7,150	10.85	-2.05	OverSold	37.5	47.4	15.7	7,400	7,050	7,100	7,000	6,900	7,300	7,400	7,500	7,350	7,050
BBNI	3,925	3.29	-0.63	Trading	42.9	49.2	(3.6)	3,975	3,875	3,875	3,825	3,775	3,975	4,025	4,075	3,975	3,850
BBRI	6,350	22.71	3.25	OverBought	73.7	57.2	70.5	6,400	6,150	6,250	6,150	6,050	6,450	6,550	6,650	6,400	6,000
BBTN	1,680	0.60	-0.59	OverSold	33.3	51.5	(0.2)	1,720	1,640	1,660	1,640	1,630	1,690	1,700	1,720	1,720	1,640
BDMN	6,100	10.91	1.67	Trading	58.3	44.0	(83.7)	6,150	6,050	6,050	6,000	5,900	6,200	6,300	6,350	6,200	5,950
BISI	1,640	-12.30	-1.20	Trading	43.8	50.8	(11.8)	1,670	1,610	1,620	1,600	1,590	1,650	1,660	1,680	1,690	1,600
BMRI	7,100	10.08	0.71	StrongSell	83.3	55.7	98.7	7,200	7,050	7,050	7,000	6,950	7,150	7,200	7,250	7,150	6,800
BSDE	930	5.68	2.20	StrongSell	83.3	60.1	18.0	945	910	910	890	880	940	950	970	930	900
BTEL	380	61.70	-1.30	TakeProfit	62.5	60.4	4.7	380	380	375	370	365	385	390	395	385	370
BUMI	3,500	12.00	-3.45	OverSold	25.0	56.9	68.7	3,600	3,450	3,450	3,400	3,375	3,525	3,550	3,600	3,625	3,425
CTRA	425	21.43	10.39	StrongSell	89.5	66.4	13.0	444	410	419	412	409	429	432	439	435	370
ELTY	178	10.56	17.11	StrongSell	88.0	81.8	7.0	185	153	170	161	157	183	187	196	178	148
EXCL	6,650	26.67	4.72	TakeProfit	75.8	64.6	148.2	6,800	6,300	6,500	6,300	6,050	6,950	7,200	7,400	7,000	6,150
GGRM	44,550	8.53	8.53	StrongSell	94.6	73.9	558.4	46,650	40,550	44,000	43,450	43,100	44,900	45,250	45,800	44,700	40,700
HEXA	6,250	-13.79	-1.57	OverBought	60.6	57.1	128.8	6,550	6,150	6,200	6,150	6,000	6,400	6,550	6,600	6,550	6,000
INCO	4,800	-3.52	-1.03	OverSold	22.2	45.2	(0.4)	4,925	4,750	4,800	4,775	4,750	4,850	4,875	4,900	4,925	4,775
INDF	5,700	15.15	1.79	TakeProfit	60.0	61.8	77.6	5,750	5,550	5,650	5,600	5,550	5,750	5,800	5,850	5,750	5,500
INDY	4,175	-18.14	1.83	Trading	58.3	60.2	38.2	4,250	4,100	4,125	4,075	4,025	4,225	4,275	4,325	4,275	4,050
INTP	16,450	2.49	-1.50	StrongBuy	15.9	46.5	38.2	17,050	16,100	16,300	16,150	15,900	16,700	16,950	17,100	17,100	16,300
ISAT	5,300	-2.75	0.95	OverSold	27.3	51.2	(1.7)	5,350	5,200	5,250	5,150	5,100	5,400	5,450	5,550	5,400	5,200
ITMG	45,450	-16.30	-3.50	Accumulate	20.3	39.7	(514.0)	47,600	43,750	44,800	44,150	43,550	46,050	46,650	47,300	47,600	44,400
JSMR	3,475	-2.11	1.46	Trading	50.0	64.3	30.1	3,500	3,425	3,425	3,375	3,325	3,525	3,575	3,625	3,525	3,400
KLBF	3,550	6.77	2.90	OverBought	68.2	56.2	9.3	3,600	3,400	3,500	3,450	3,400	3,600	3,650	3,700	3,600	3,375
LSIP	2,400	-5.51	0.00	OverSold	35.7	50.7	13.6	2,475	2,375	2,375	2,350	2,300	2,450	2,500	2,525	2,475	2,350
MYOR	11,850	9.72	3.04	StrongSell	84.0	63.8	184.0	11,950	11,500	11,750	11,650	11,550	11,950	12,050	12,150	11,900	11,350
PGAS	3,975	-11.17	-4.22	StrongBuy	14.8	45.5	41.8	4,200	3,900	3,950	3,925	3,875	4,025	4,075	4,100	4,200	3,950
PTBA	20,900	-12.73	-4.35	StrongBuy	16.0	32.7	(163.5)	21,900	20,400	20,800	20,700	20,600	21,000	21,100	21,200	22,100	20,600
RALS	770	-10.47	5.48	StrongSell	-	100.0	-	790	715	745	720	705	785	800	825	770	720
SGRO	3,475	6.92	2.96	Trading	57.1	62.3	73.1	3,525	3,375	3,425	3,375	3,350	3,500	3,525	3,575	3,475	3,350
SMCB	2,125	-4.49	-1.16	OverSold	33.3	49.9	5.2	2,200	2,000	2,075	2,000	1,975	2,175	2,200	2,275	2,200	2,000
SMGR	9,450	-4.06	1.61	OverBought	64.3	53.7	6.5	9,500	9,300	9,350	9,250	9,200	9,500	9,550	9,650	9,450	9,200
SMRA	1,120	3.70	0.90	OverSold	38.9	45.1	(2.8)	1,140	1,110	1,110	1,090	1,080	1,140	1,150	1,170	1,160	1,100
TINS	2,700	-5.26	0.00	Trading	40.0	45.3	(17.3)	2,775	2,625	2,650	2,600	2,575	2,725	2,750	2,800	2,775	2,575
TLKM	7,750	-3.13	2.65	StrongSell	92.9	60.9	98.0	7,850	7,650	7,700	7,600	7,550	7,850	7,900	8,000	7,800	7,500
UNTR	22,500	-7.41	0.22	OverSold	37.4	53.2	191.0	23,100	21,650	22,000	21,450	21,200	22,800	23,050	23,600	23,050	21,550
UNVR	14,900	-7.17	0.00	Accumulate	36.0	37.2	(147.5)	15,050	14,800	14,800	14,650	14,550	15,050	15,150	15,300	15,150	14,650

S1 = Support 1 S2 = Support 2 S3 = Support 3
 R1 = Resisten 1 R2 = Resisten 2 R2 = Resisten 2
 STO = Stochastic Oscillator
 RSI = Relative Strength Index
 MACD = Moving Average Convergence Divergence
 H-5 = 5 hari sebelumnya

RESEARCH TEAM

Andrian Tanuwijaya	Equity Analyst	(andrian.tanuwijaya@trimegah.com)
Hanel Topada Era Tania	Equity Analyst	(hanel.tania@trimegah.com)
T Heldy Arifien	Technical Analyst	(heldy@trimegah.com)
Rovandi	Research Assistant	(rovandi@trimegah.com)

EQUITY CAPITAL MARKET TEAM

Nathanael Benny Prasetyo	Head of Retail ECM	(benny.prasetyo@trimegah.com)
Windra Djulnaily	Pluit, Jakarta	(windra.djulnaily@trimegah.com)
Ariawan Anwar	Artha Graha, Jakarta	(ariawan.anwar@trimegah.com)
Ferry Zabur	Kelapa Gading, Jakarta	(ferry.zabur@trimegah.com)
Wirjawan Joesoef	Mangga Dua, Jakarta	(iwan@trimegah.com)
Lukman Abdul Azis	Kebon Jeruk, Jakarta	(lukman@trimegah.com)
Tutik Suciati	Semarang, Jawa Tengah	(tuty.s@trimegah.com)
Sonny Muljadi	Surabaya, Jawa Timur	(sonny.muljadi@trimegah.com)
Ni Luh Ketut Sri Agustini	Denpasar, Bali	(sri.agustini@trimegah.com)
Philip Fernando Suwandi	Makassar, Sulawesi Selatan	(philip.fs@trimegah.com)
agus.jatmiko	Balikpapan, Kalimantan Timur	(agus.jatmiko@trimegah.com)
Asep Saepudin	Bandung, Jawa Barat	(asep.saepudin@trimegah.com)
Asep Saepudin	Cirebon, Jawa Barat	(asep.saepudin@trimegah.com)
Very Wijaya	Medan, Sumatera Utara	(very.wijaya@trimegah.com)
Tantie Rivi Watie	Pekanbaru, Riau	(tantierw@trimegah.com)
Agus Bambang Suseno	Solo, Jawa Tengah	(agus.suseno@trimegah.com)
Agus Bambang Suseno	Yogyakarta, Jawa Tengah	(agus.suseno@trimegah.com)
Donny Kristanto Setiadi	Palembang, Sumatra Selatan	(donny.kristanto@trimegah.com)
Sonny Muljadi	Malang, Jawa Timur	(sonny.muljadi@trimegah.com)

PT Trimegah Securities Tbk
18th Fl, Artha Graha Building
Jl. Jend. Sudirman Kav. 52-53
Jakarta 12190, INDONESIA
Tel : (6221) 2924 9088 Fax : (6221) 2924 9163

DISCLAIMER

This report has been prepared by PT Trimegah Securities Tbk on behalf of itself and its affiliated companies and is provided for information purposes only. Under no circumstances is it to be used or considered as an offer to sell, or a solicitation of any offer to buy. This report has been produced independently and the forecasts, opinions and expectations contained herein are entirely those of Trimegah Securities.

While all reasonable care has been taken to ensure that information contained herein is not untrue or misleading at the time of publication, Trimegah Securities makes no representation as to its accuracy or completeness and it should not be relied upon as such. This report is provided solely for the information of clients of Trimegah Securities who are expected to make their own investment decisions without reliance on this report. Neither Trimegah Securities nor any officer or employee of Trimegah Securities accept any liability whatsoever for any direct or consequential loss arising from any use of this report or its contents. Trimegah Securities and/or persons connected with it may have acted upon or used the information herein contained, or the research or analysis on which it is based, before publication. Trimegah Securities may in future participate in an offering of the company's equity securities.