

IHSG

3.788,5 -12,5 -0,32%

Ulisan Pasar



Tekanan pelemahan pada sejumlah saham unggulan disertai serangkaian aksi profit taking emiten dengan kapitalisasi besar, IHSG kembali terpuruk 0,32% ditutup pada level 3.789. Terkulai dalam zoba merah perdagangan yang juga diringi dengan penurunan rasio volume selama dua hari berturut-turut, mengakibatkan IHSG gagal bertahan pada area 3.800.

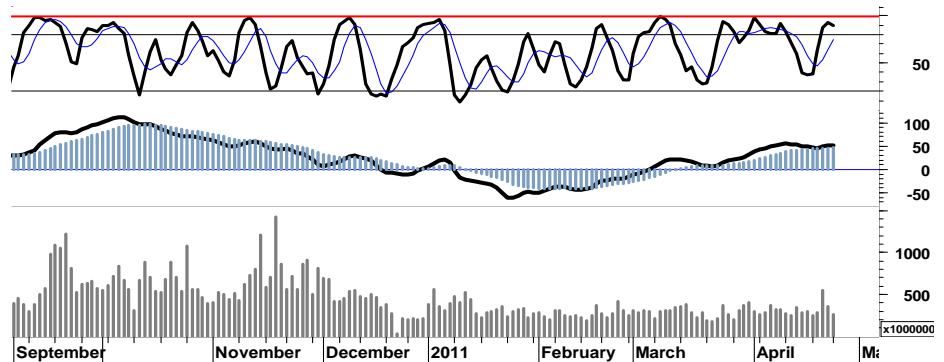
Walaupun secara umum masih mampu untuk bertahan pada kondisi bullish jangka panjang, namun ditutup mendekati pivot support-nya menempatkan IHSG pada kondisi berimbang. Dengan kecenderungan pelemahan signal yang tercermin pada leading indicator IHSG, memberikan indikasi bahwasanya pada perjalanan IHSG masih akan dibayang-bayangi oleh tekanan jual.

Untuk dapat bertahan pada kondisi up-trendnya, trend-support harga 3.746 - 3.750 diharapkan mampu menahan gempuran tekanan pelemahan yang mungkin akan berlanjut pada

perdagangan hari ini dengan memperketat stop-loss harga pada retracement 50% di level 3.720 sebagai basis support harga terendah.

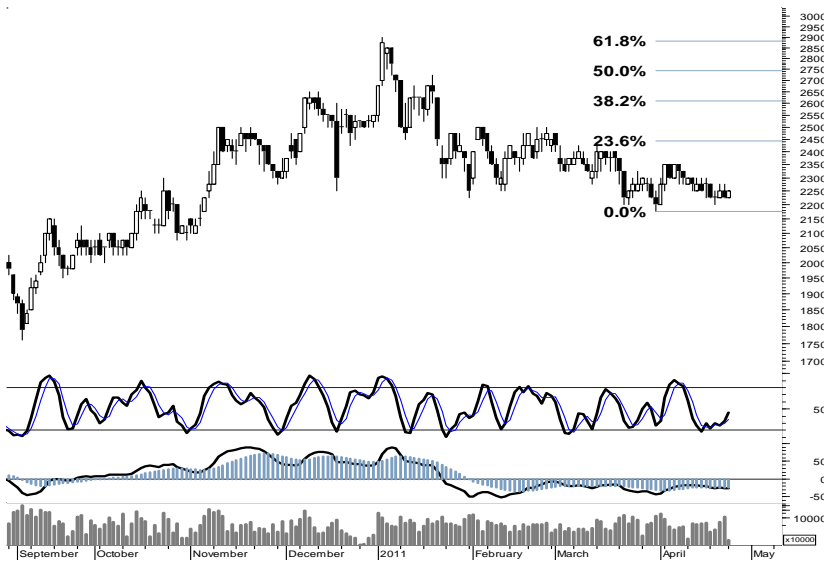
Sementara dengan bertumpu pada signal positif yang diperoleh dari MACD, diharapkan mampu menciptakan swing positif menguji resistensi harga 3.810 - 3.815.

S1	S2	R1	R2
3,785	3,770	3,815	3,830



## Saham Pilihan

Saham	Harga (Rp)	Rekomendasi	Stochastic	RSI	BB Top	BB Bottom	S1	S2	R1	R2
ADRO	2,250	Trading	45.45	44.29	2,275	2,225	2,250	2,225	2,275	2,300
ANTM	2,300	Trading	41.67	51.01	2,350	2,275	2,300	2,275	2,325	2,350
BUMI	3,325	Trading	40.00	58.19	3,375	3,300	3,300	3,275	3,375	3,400
PGAS	3,925	Trading	50.00	52.99	4,025	3,875	3,900	3,875	3,975	4,000
PTBA	22,150	OverSold	26.32	58.83	22,350	22,050	22,100	22,000	22,400	22,500
UNTR	23,150	Trading	85.33	59.61	23,700	22,250	23,050	22,950	23,350	23,450



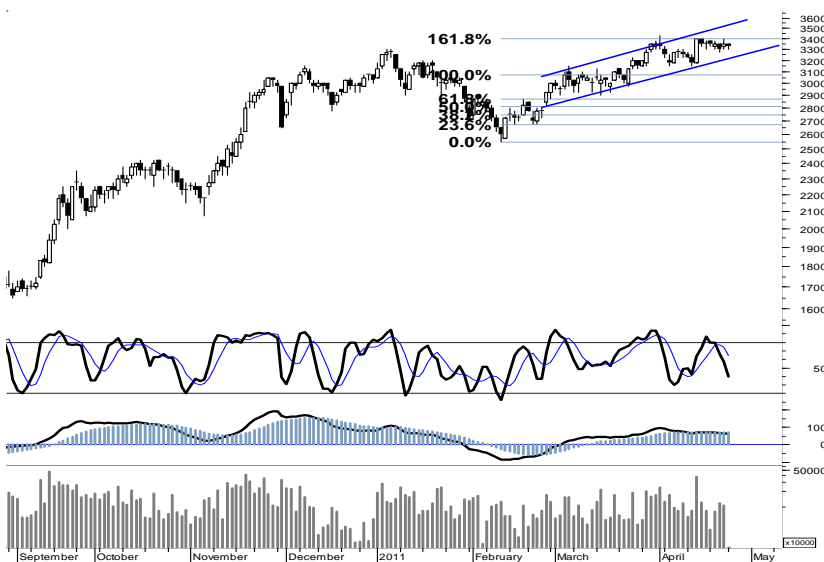
Ditutup dalam area pivot support harga 2.250 menempatkan ADRO pada kondisi berimbang. Signal positif leading indicator memberikan ruang bagi ADRO untuk tetap bertahan pada area konsolidasi, serta membuka peluang untuk menguji penetrasi resistensi harga 2.275.

S1	S2	R1	R2
2,250	2,225	2,275	2,300



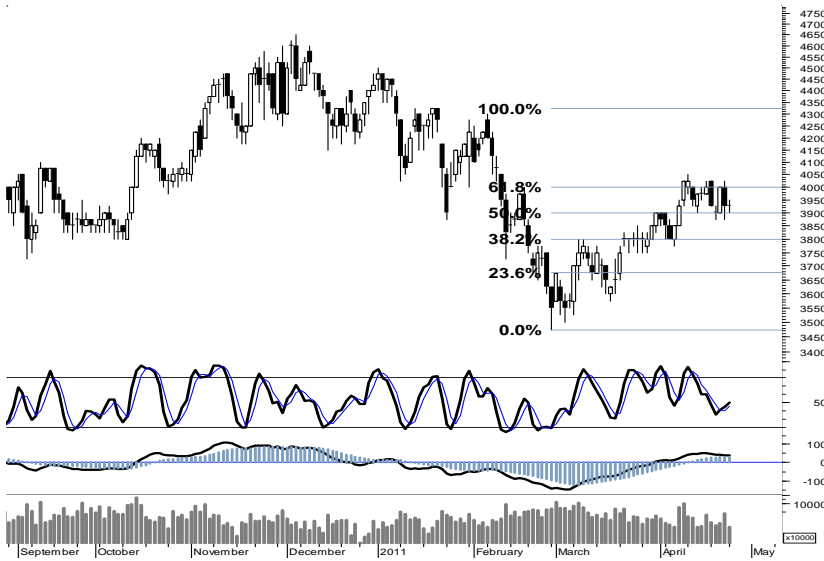
Untuk dapat bertahan pada zona hijau trading serta bertumpu pada signal positif stochastic, ANTM memiliki ruang untuk kembali menguji penetrasi resistensi retracement 50% di level 2.300 serta menguji resistensi harga 2.350.

S1	S2	R1	R2
2,300	2,275	2,325	2,350



Ditutup pada pivot support 3.325 menempatkan BUMI berada dalam kondisi berimbang. Terbatasnya ruang pelemahan dengan berbasis trend-support 3.250, BUMI berpeluang untuk bergerak mix-positif dalam interval harga 3.275 - 3.400.

S1	S2	R1	R2
3,300	3,275	3,375	3,400



Golden Cross Signal yang muncul dua hari lalu serta bertumpu pada basis support retracement 50% 3.900, PGAS memiliki peluang untuk menguji resistensi harga pada level 4.000.

S1	S2	R1	R2
3,900	3,875	3,975	4,000



Indikasi golden cross pada area oversold membuka peluang bagi PTBA untuk bertahan pada area konsolidasi harga, dan menguji kembali resistensi harga 22.500.

S1	S2	R1	R2
22,100	22,000	22,400	22,500



Signal positif leading indicator yang tercermin pada area overbought, memberikan peluang bagi UNTR untuk menguji resistensi harga 23.350.

Penyempitan ruang penguatan pada stochastic, akumulasi profit apabila UNTR berhasil melakukan penetrasi resistensi 23.350.

S1	S2	R1	R2
23,050	22,950	23,350	23,450

## TRADE DATA

### JCI (IHSG) 3,788.5 -12.5 -0.33%

YTD (Rp)	2.3%	Volume (m) :	2,964
YTD (USD)	6.7%	Nilai (Rpbn) :	2,651
Moving Avg 20day	3,714	Mkt Cap (Rptr) :	3,378
Moving Avg 50day	3,591	Market P/E (x) :	16.4
Moving Avg 200day	3,454	Market Div. Yield (%) :	2.4

### Indonesia & Sectors +/- (%) YTD (%)

MSCI Indonesia	4731.98	-24.6	-0.52	4.08
JII	525.29	-3.9	-0.74	-1.43
LQ45	679.37	-3.0	-0.44	2.72
JAKFIN Index	508.53	-0.5	-0.00	8.97
JAKINFR Index	784.67	-6.6	-0.01	-4.22
JAKMINE Index	3233.83	0.3	0.00	-1.23
JAKCONS Index	1121.72	0.2	0.00	2.47
JAKTRAD Index	489.86	-2.8	-0.01	3.33
JAKMIND Index	991.06	-12.6	-0.01	2.49
JAKBIND Index	404.01	-0.8	-0.00	4.33
JAKPROP Index	206.39	0.2	0.00	1.62
JAKAGRI Index	2157.04	-15.3	-0.01	-5.57

### Regional Indices +/- (%) YTD (%)

MXWO	MSCI World	1,357.5	-3.5	-0.26	6.05
SPX	S&P 500	1,335.3	-2.1	-0.16	6.17
<b>US</b>					
Dow Jones Industrial		12,479.9	-26.1	-0.21	7.79
Nasdaq	US	2,825.9	5.7	0.20	6.52
<b>Europe</b>					
EURO 50	Europe	280.5	0.0	0.00	1.69
FTSE	London	6,018.3	0.0	0.00	2.01
DAX	German	7,295.5	0.0	0.00	5.51
CAC	France	4,021.9	0.0	0.00	5.71
SMI	Swiss	6,457.2	0.0	0.00	0.33
<b>BRIC</b>					
BOVESPA	Brazil	66,972.4	-85.7	-0.13	-3.37
MICEX	Russia	1,769.9	-24.0	-1.34	4.85
SENSEX	India	19,584.3	-17.9	-0.09	-4.51
NIFTY	India	5,874.5	-10.2	-0.17	-4.24
SHCOMP	China	2,965.0	-45.6	-1.51	5.59
SZCOMP	China	1,249.6	-25.1	-1.97	-3.20

### Commodities +/- (%) YTD (%)

CRB Index	366.56	-0.9	-0.24	10.14
<b>Oil &amp; Gas</b>				
Crude Oil	112.28	-0.0	-0.01	22.87
Natural Gas	4.39	-0.0	-0.52	-0.36
COAL (Rotterdam)	127.75	0.0	0.00	-2.78
COAL (Amsterdam)	128.75	0.0	0.00	2.22
COAL (Australia,wk)	122.80	0.0	0.00	0.33
<b>Industrial Metals</b>				
Aluminium	2,742.00	0.0	0.00	11.50
Nickel	26,900	0	0.00	8.69
Tin	32,725	0	0.00	21.65
<b>Precious Metal</b>				
Gold	1,509.10	5.3	0.35	6.17
Silver	47.15	1.1	2.37	52.54
<b>Soft Commodities</b>				
CPO (Malaysia)	3,412.00	52.0	1.55	-10.54
CPO (Netherlands)	1,150.00	0.0	0.00	-10.51
Rubber	5,411.22	-122.5	-2.21	8.36
Corn	762.50	25.3	3.42	21.22
Wheat	826.00	26.5	3.31	4.00
Soybeans	1,389.50	9.0	0.65	-0.30
Rice (Indonesia)	6,600.00	0.0	0.00	-7.04

### Developed ASIA

Nikkei	Japan	9,672.0	-10.3	-0.11	-5.44
TPX	Japan	840.7	-1.5	-0.18	-6.47
HIS	Hong kong	24,138.3	0.0	0.00	4.79
KOSPI	S.Korea	2,216.0	18.2	0.83	8.04
TAIEX	Taiwan	8,950.8	-18.7	-0.21	-0.24
FSSTI	Singapore	3,187.7	-7.0	-0.22	-0.07

### ASEAN

SET	Thailand	1,105.4	0.1	0.01	7.04
PCOMP	Philippines	4,331.4	56.6	1.32	3.10
KLCI	Malaysia	1,524.1	1.3	0.09	0.34
VNINDEX	Vietnam	465.6	9.2	2.01	-3.93

### Currency +/- (%) YTD (%)

EURUSD	Euro	1.458	0.002	0.14	8.95
GBPUSD	United Kingdom	1.650	-0.001	-0.07	5.68
USDCHE	Switzerland	0.881	-0.005	-0.55	-5.77
USDCAD	Canada	0.954	-0.000	-0.01	-4.37
AUDUSD	Australia	1.072	-0.002	-0.15	4.78
NZDUSD	New Zealand	0.799	-0.002	-0.30	2.45
USDJPY	Japan	81.8	-0.050	-0.06	0.88
USDCNY	China	6.532	0.025	0.38	-1.13
USDHKD	Hongkong	7.772	0.001	0.02	-0.02
USDSGD	Singapore	1.236	0.002	0.13	-3.68
Rupiah	Indonesia	8,623.0	0.000	0.00	-4.15

### Winners

Stock	Price	(%)	Stock	Price	(%)
ULTJ	1,480	13.85	PLIN	2,500	-7.41
INDR	4,000	12.68	DSSA	25,000	-3.85
KLBF	3,675	2.80	TLKM	7,550	-2.58
BORN	1,720	2.38	ASII	54,900	-1.61
BNII	610	1.67	BDMN	6,300	-1.56
BBNI	4,150	1.22	BYAN	17,000	-1.45
ADRO	2,250	1.12	UNVR	15,200	-0.98
INCO	4,925	1.03	GGRM	40,850	-0.85
ICBP	5,400	0.93	INTP	17,650	-0.84
EXCL	6,300	0.80	BMRI	7,050	-0.70

### Losers

### Value (Rpbn)

Value (Rpbn)	Volume (Lot)	Freq	(x)
BORN	126,228	BIPI	338,755
BBNI	118,476	BIPI	338,755
ASII	116,958	GREN	328,101
BMRI	111,693	BKDP	252,906
BBRI	99,810	DEWA	226,644
KLBF	96,145	ENRG	212,098
LPKR	66,020	TRUB	184,842
TLKM	56,163	LPKR	169,258
BUMI	55,877	ASRI	152,445
PGAS	55,834	BORN	147,799
		MIRA	116,573
		PANR	9,400
		GOLD	5,290
		GREN	3,741
		BKDP	3,689
		BORN	2,406
		BIPI	2,261
		KLBF	2,216
		ULTJ	2,180
		ADES	1,851
		BJBR	1,737

# Matriks Saham Teknikal

Code	Last	Ytd Chg(%)	H-5 Chg (%)	Rekomendasi	STO	RSI	MACD	Bollinger Band		Support			Resistance			H-5	
								Top	Bottom	1	2	3	1	2	3	Highest	Lowest
AALI	22,850	-14.74	0.22	OverBought	69.4	54.4	114.1	23,200	22,600	22,750	22,600	22,400	23,100	23,300	23,450	23,150	22,500
ACES	2,600	-8.77	2.97	OverBought	62.5	53.8	8.6	2,675	2,550	2,575	2,550	2,500	2,650	2,700	2,725	2,650	2,525
ADRO	2,250	-15.89	-1.10	Trading	45.5	44.3	(26.0)	2,275	2,225	2,250	2,225	2,225	2,275	2,275	2,300	2,300	2,200
AKRA	1,600	-5.88	4.58	StrongSell	91.2	66.5	17.5	1,640	1,530	1,580	1,550	1,540	1,620	1,630	1,660	1,600	1,480
ANTM	2,300	-7.07	-2.13	Trading	41.7	51.0	17.0	2,350	2,275	2,300	2,275	2,275	2,325	2,325	2,350	2,350	2,250
ASII	54,900	0.92	-0.36	OverBought	71.1	47.9	(65.4)	56,450	53,550	54,450	54,000	53,200	55,700	56,500	56,950	56,000	53,600
BBCA	7,500	16.28	2.74	TakeProfit	74.2	72.9	190.3	7,600	7,400	7,450	7,400	7,300	7,600	7,700	7,750	7,700	7,100
BBNI	4,150	9.21	3.75	StrongSell	92.0	70.9	83.2	4,225	3,950	4,125	4,075	4,050	4,200	4,225	4,275	4,175	3,900
BBRI	6,500	25.60	5.69	StrongSell	81.8	73.6	296.4	6,800	6,200	6,450	6,350	6,300	6,600	6,650	6,750	6,650	6,100
BBTN	1,780	6.59	0.56	TakeProfit	77.8	75.4	62.0	1,800	1,760	1,770	1,760	1,750	1,790	1,800	1,810	1,790	1,730
BDMN	6,300	14.55	-2.33	OverSold	38.1	42.8	(29.7)	6,450	6,250	6,250	6,200	6,150	6,350	6,400	6,450	6,550	6,200
BISI	1,780	-4.81	-0.56	Trading	41.2	63.5	75.0	1,810	1,770	1,770	1,760	1,730	1,810	1,840	1,850	1,820	1,760
BMRI	7,050	9.30	3.68	StrongSell	91.4	64.6	181.3	7,400	6,650	7,000	6,950	6,850	7,150	7,250	7,300	7,150	6,550
BSDE	920	4.55	6.98	StrongSell	90.5	76.8	33.1	950	860	910	900	890	930	940	950	930	850
BTEL	385	63.83	-2.53	Trading	50.0	73.2	17.4	391	382	382	379	377	387	389	392	395	375
BUMI	3,325	6.40	-0.75	Trading	40.0	58.2	64.7	3,375	3,300	3,300	3,275	3,250	3,350	3,375	3,400	3,400	3,275
CTRA	390	11.43	1.30	TakeProfit	72.2	62.1	10.8	400	370	385	380	375	395	400	405	395	365
ELTY	139	-13.66	0.72	Trading	57.1	50.4	(0.3)	141	138	138	137	135	141	143	144	142	135
EXCL	6,300	20.00	11.50	TakeProfit	78.0	67.8	143.2	6,600	5,900	6,250	6,150	6,100	6,400	6,450	6,550	6,550	5,600
GGRM	40,850	-0.49	0.86	OverBought	78.8	51.2	135.9	41,650	40,200	40,650	40,450	40,050	41,250	41,650	41,850	41,450	40,000
HEXA	5,700	-21.38	2.70	OverBought	76.5	40.9	(180.4)	5,900	5,550	5,650	5,600	5,500	5,800	5,900	5,950	5,800	5,500
INCO	4,925	-1.01	1.55	OverBought	75.0	58.8	19.1	4,975	4,800	4,900	4,875	4,825	4,975	5,025	5,050	4,975	4,775
INDF	5,600	13.13	4.67	StrongSell	90.0	71.5	124.1	5,750	5,400	5,550	5,500	5,450	5,650	5,700	5,750	5,650	5,300
INDY	3,950	-22.55	-0.63	Trading	55.6	47.1	0.9	4,000	3,925	3,925	3,900	3,850	4,000	4,050	4,075	4,025	3,875
INTP	17,650	9.97	3.82	StrongSell	89.0	69.2	544.6	18,200	16,950	17,400	17,150	16,950	17,850	18,050	18,300	17,900	16,650
ISAT	5,400	-0.92	0.93	OverBought	76.9	59.5	57.0	5,500	5,350	5,350	5,300	5,250	5,450	5,500	5,550	5,450	5,250
ITMG	47,600	-12.34	-2.36	OverSold	25.8	47.5	169.2	48,250	47,400	47,450	47,300	47,150	47,750	47,900	48,050	48,950	47,400
JSMR	3,350	-5.63	1.52	OverBought	66.7	52.9	10.7	3,425	3,275	3,325	3,300	3,250	3,400	3,450	3,475	3,400	3,250
KLBF	3,675	10.53	0.00	Trading	50.0	66.6	135.9	3,725	3,575	3,600	3,525	3,475	3,725	3,775	3,850	3,700	3,525
LSIP	2,375	-6.50	-1.04	OverBought	77.8	53.6	34.0	2,450	2,375	2,375	2,350	2,325	2,425	2,450	2,475	2,425	2,350
MYOR	11,600	7.41	0.00	Trading	46.4	65.3	385.6	11,850	11,450	11,550	11,500	11,450	11,650	11,700	11,750	11,900	11,400
PGAS	3,925	-12.29	-1.88	Trading	50.0	53.0	44.9	4,025	3,875	3,900	3,875	3,850	3,950	3,975	4,000	4,025	3,875
PTBA	22,150	-7.52	-1.77	OverSold	26.3	58.8	363.8	22,350	22,050	22,100	22,000	21,900	22,300	22,400	22,500	22,650	22,000
RALS	780	-9.30	-1.27	Trading Sell	-	100.0	-	800	770	20,870	20,870	20,870	20,870	20,870	20,870	800	770
SGRO	3,250	0.00	-2.99	Trading	42.9	60.6	83.4	3,300	3,225	3,225	3,200	3,175	3,275	3,300	3,325	3,350	3,175
SMCB	2,225	0.00	2.30	StrongSell	87.5	67.9	58.3	2,275	2,100	2,225	2,200	2,200	2,250	2,250	2,275	2,225	2,075
SMGR	9,550	-3.05	0.00	Trading	50.0	60.0	157.7	9,600	9,500	9,500	9,450	9,350	9,650	9,750	9,800	9,650	9,450
SMRA	1,160	7.41	-1.69	StrongSell	81.0	57.3	33.6	1,230	1,140	1,140	1,120	1,090	1,190	1,220	1,240	1,200	1,130
TINS	2,825	-0.88	0.00	OverBought	73.3	55.2	42.6	2,875	2,800	2,800	2,775	2,725	2,875	2,925	2,950	2,875	2,750
TLKM	7,550	-5.63	4.14	OverBought	78.0	57.6	101.9	8,000	7,350	7,450	7,350	7,200	7,700	7,850	7,950	7,850	7,200
UNTR	23,150	-4.73	4.28	Trading	85.3	59.6	60.7	23,700	22,250	23,050	22,950	22,850	23,250	23,350	23,450	23,350	22,000
UNVR	15,200	-5.30	1.67	OverBought	79.3	45.6	(168.3)	15,500	15,000	15,100	15,000	14,850	15,350	15,500	15,600	15,400	14,900

S1 = Support 1      S2 = Support 2      S3 = Support 3  
 R1 = Resisten 1      R2 = Resisten 2      R2 = Resisten 2  
 STO = Stochastic Oscillator  
 RSI = Relative Strength Index  
 MACD = Moving Average Convergence Divergence  
 H-5 = 5 hari sebelumnya

## RESEARCH TEAM

---

<b>Andrian Tanuwijaya</b>	Equity Analyst	(andrian.tanuwijaya@trimegah.com)
<b>Hanel Topada Era Tania</b>	Equity Analyst	(hanel.tania@trimegah.com)
<b>T Heldy Arifien</b>	Technical Analyst	(heldy@trimegah.com)
<b>Rovandi</b>	Research Assistant	(rovandi@trimegah.com)

## EQUITY CAPITAL MARKET TEAM

---

Henry F. Jusuf	Head of Equities	(henry@trimegah.com)
Nathanael Benny Prasetyo	Head of Retail ECM	(benny.prasetyo@trimegah.com)
Windra Djulnaily	Pluit, Jakarta	(windra.djulnaily@trimegah.com)
Ariawan Anwar	Artha Graha, Jakarta	(ariawan.anwar@trimegah.com)
Ferry Zabur	Kelapa Gading, Jakarta	(ferry.zabur@trimegah.com)
Wirjawan Joesoef	Mangga Dua, Jakarta	(iwan@trimegah.com)
Lukman Abdul Azis	Kebon Jeruk, Jakarta	(lukman@trimegah.com)
Tutik Suciati	Semarang, Jawa Tengah	(tuty.s@trimegah.com)
Sonny Muljadi	Surabaya, Jawa Timur	(sonny.muljadi@trimegah.com)
Ni Luh Ketut Sri Agustini	Denpasar, Bali	(sri.agustini@trimegah.com)
Philip Fernando Suwandi	Makassar, Sulawesi Selatan	(philip.fs@trimegah.com)
agus.jatmiko	Balikpapan, Kalimantan Timur	(agus.jatmiko@trimegah.com)
Asep Saepudin	Bandung, Jawa Barat	(asep.saepudin@trimegah.com)
Asep Saepudin	Cirebon, Jawa Barat	(asep.saepudin@trimegah.com)
Very Wijaya	Medan, Sumatera Utara	(very.wijaya@trimegah.com)
Tantie Rivi Watie	Pekanbaru, Riau	(tantierw@trimegah.com)
Edwin Jayandaru	Solo, Jawa Tengah	(edwin.jayandaru@trimegah.com)
Edwin Jayandaru	Yogyakarta, Jawa Tengah	(edwin.jayandaru@trimegah.com)
Donny Kristanto Setiadi	Palembang, Sumatra Selatan	(donny.kristanto@trimegah.com)

**PT Trimegah Securities Tbk**  
18<sup>th</sup> Fl, Artha Graha Building  
Jl. Jend. Sudirman Kav. 52-53  
Jakarta 12190, INDONESIA  
Tel : (6221) 2924 9088 Fax : (6221) 2924 9163

## DISCLAIMER

This report has been prepared by PT Trimegah Securities Tbk on behalf of itself and its affiliated companies and is provided for information purposes only. Under no circumstances is it to be used or considered as an offer to sell, or a solicitation of any offer to buy. This report has been produced independently and the forecasts, opinions and expectations contained herein are entirely those of Trimegah Securities.

While all reasonable care has been taken to ensure that information contained herein is not untrue or misleading at the time of publication, Trimegah Securities makes no representation as to its accuracy or completeness and it should not be relied upon as such. This report is provided solely for the information of clients of Trimegah Securities who are expected to make their own investment decisions without reliance on this report. Neither Trimegah Securities nor any officer or employee of Trimegah Securities accept any liability whatsoever for any direct or consequential loss arising from any use of this report or its contents. Trimegah Securities and/or persons connected with it may have acted upon or used the information herein contained, or the research or analysis on which it is based, before publication. Trimegah Securities may in future participate in an offering of the company's equity securities.