

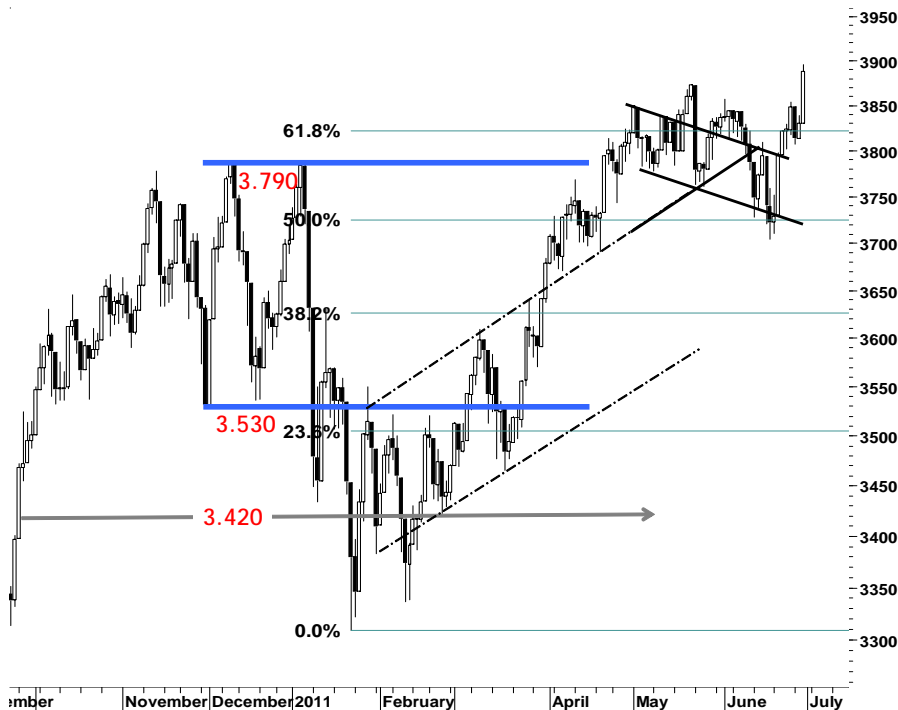
IHSG

3.888,6

58,3

1,52%

Ulisan Pasar



Akumulasi beli dilakukan oleh para pelaku asing, yang membukukan nilai total pembelian bersih hingga Rp1tr mendorong IHSG bergerak positif hingga mencatatkan rekor harga baru di level 3.896. Disaat kekhawatiran akan kejelasan masalah penyelesaian krisis utang Yunani, sedikit memudar sehingga peluang tersebut dimanfaatkan oleh para pelaku pasar untuk melakukan bargain hunting pada sejumlah saham unggulan dengan kapitalisasi besar.

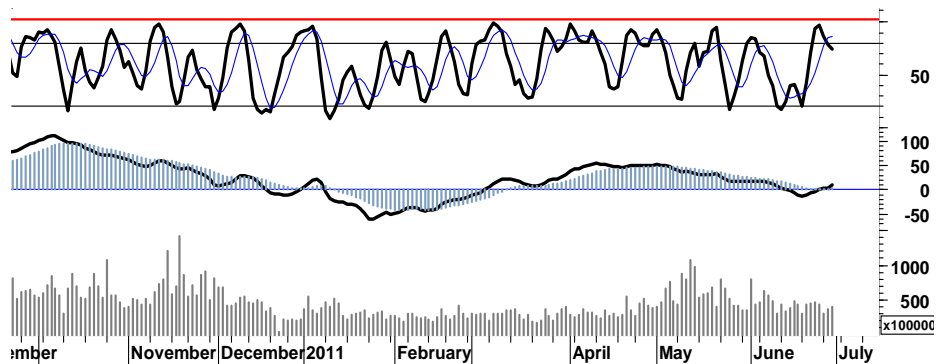
Pada saat tercatatnya rekor harga baru, di akhir sesi perdagangan IHSG justru ditutup dengan sisa penguatan sebesar 1,5% di level 3.889 sebagai akibat aksi profit taking pada saham ASII yang sebelumnya membawa IHSG menguat sejak awal sesi perdagangan.

Kombinasi total transaksi 116rb kejadian di area overbought stochastic dengan pertumbuhan rasio volume transaksi yang hanya meningkat 2,5% dibandingkan perdagangan di hari Selasa lalu, mencerminkan adanya kehati-

hatian yang ditunjukkan oleh para pelaku pasar dalam menyikapi kondusifnya gejala perekonomian yang terjadi di Yunani.

Indikasi perpotongan alur dead-cross pada stochastic oscillator yang mencoba keluar dari area overbought, mencerminkan adanya gangguan atau ancaman aksi profit taking pada perdagangan hari ini.

Kami perkirakan IHSG pada perdagangan hari ini akan cenderung bergerak mix-negatif, dalam rentang harga 3.810 - 3.900



S1	S2	R1	R2
3,850	3,810	3,915	3,940

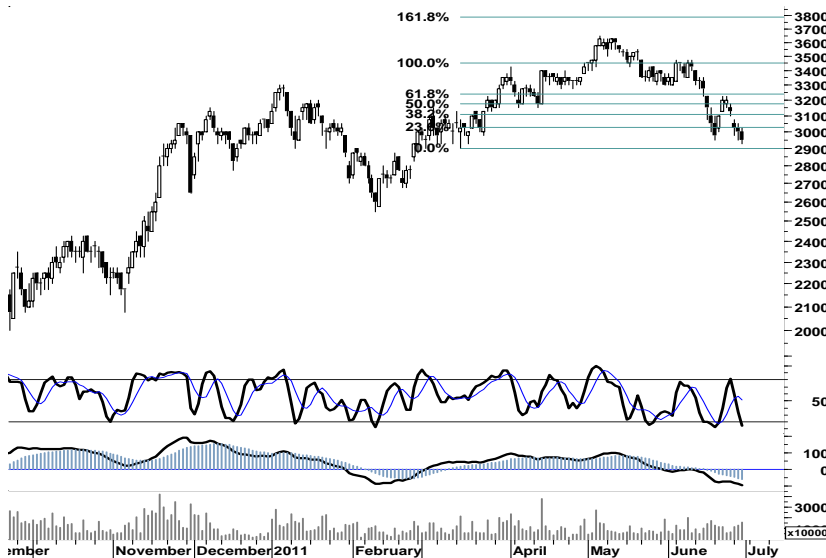
## Saham Pilihan

Saham	Harga (Rp)	Rekomendasi	Stochastic	RSI	BB Top	BB Bottom	S1	S2	R1	R2
BISI	1,300	StrongBuy	10.53	29.92	1,340	1,290	1,280	1,260	1,360	1,380
BUMI	2,950	StrongBuy	15.15	33.09	3,200	2,850	2,925	2,875	3,075	3,125
EXCL	6,150	Trading	48.28	50.36	6,300	5,850	6,050	5,900	6,400	6,550
SMCB	2,200	OverSold	33.33	52.53	2,225	2,125	2,175	2,125	2,275	2,325
SMGR	9,600	Trading	56.00	53.35	9,750	9,450	9,550	9,500	9,800	9,850
UNTR	24,900	Trading Sell	82.54	76.77	25,100	23,050	24,200	23,500	25,700	26,400



Terbatasnya ruang tekanan, membuka peluang bagi BISI melakukan teknikal rebound pada support 1.280.

S1	S2	R1	R2
1,280	1,260	1,360	1,380



Seyogyanya support 2.900 dengan keterbatasan ruang tekanan pada stochastic, merupakan peluang akumulasi bagi BUMI untuk mengantisipasi probabilita teknikal rebound serta kembali menguji resistensi 3.025-3.050.

Yang perlu diwaspadai adalah target support celah harga 2.800, saat ingin mendapatkan momentum pembalikan arah.

S1	S2	R1	R2
2,925	2,875	3,075	3,125



Terciptanya golden-cross pada area trading neutral stochastic, memberikan indikasi sekaligus peluang bagi EXCL untuk melanjutkan rally penguatan menembus resistensi kuat 6.300.

Pada perdagangan hari ini, kami perkirakan EXCL akan menguji interval harga 6.050 - 6.400.

S1	S2	R1	R2
6,050	5,900	6,400	6,550



Serupa dengan pola yang sedang berkembang dalam pergerakan harga EXCL, SMCB-pun memiliki peluang untuk melanjutkan rally penguatan menguji resistensi harga 2.300 untuk keluar dari area konsolidasinya.

Terbuka peluang bagi SMCB untuk menguji penetrasi resisten harga 2.300.

S1	S2	R1	R2
2,175	2,125	2,275	2,325



Ditutup dalam kondisi berimbang di daerah pivot support, cukup besarnya perlawanan tekanan jual pada perdagangan kemarin, serta celah support 9.250, merupakan 3 katalis yang dapat mematahkan peluang bagi SMGR untuk keluar dari area konsolidasi harga.

Indikasi golden-cross pada stochastic serta pertumbuhan rasio volume perdagangan sebesar 35%, diharapkan mampu mendorong SMGR menembus resistensi harga 9.800.

S1	S2	R1	R2
9,550	9,500	9,800	9,850



Secara umum UNTR masih memiliki peluang membentuk rekor harga baru serta melakukan penetrasi resistensi 25.550, untuk mencapai target resistensi harga 26.000.

Waspada potensi menuju support celah 23.100, apabila UNTR melanjutkan rally penguatan dengan mengakumulasi sebagian profit.

S1	S2	R1	R2
24,200	23,500	25,700	26,400

## TRADE DATA

### JCI (IHSG) 3,888.6 58.3 1.52%

YTD (Rp)	5.0%	Volume (m) :	3,950
YTD (USD)	9.9%	Nilai (Rpbn) :	3,328
Moving Avg 20day	3,805	Mkt Cap (Rptr) :	3,439
Moving Avg 50day	3,807	Market P/E (x) :	16.2
Moving Avg 200day	3,630	Market Div. Yield (%) :	2.4

### Indonesia & Sectors +/- (%) YTD (%)

MSCI Indonesia	4,823.6	88.1	1.86	6.09
JII	536.0	8.8	1.67	0.59
LQ45	690.6	12.6	1.85	4.43
JAKFIN Index	506.9	8.6	0.02	8.61
JAKINFR Index	776.3	7.6	0.01	-5.24
JAKMINE Index	3,254.4	30.5	0.01	-0.60
JAKCONS Index	1,180.3	19.5	0.02	7.82
JAKTRAD Index	529.9	11.0	0.02	11.77
JAKMIND Index	1,142.2	30.0	0.03	18.11
JAKBIND Index	403.0	3.3	0.01	4.07
JAKPROP Index	207.4	2.4	0.01	2.14
JAKAGRI Index	2,318.7	33.9	0.01	1.50

### Commodities +/- (%) YTD (%)

CRB Index	338.05	-0.8	-0.22	1.58
<b>Oil &amp; Gas</b>				
Crude Oil	95.42	0.7	0.69	4.42
Natural Gas	4.37	0.1	1.37	-0.70
COAL (Rotterdam)	122.65	0.1	0.08	-6.66
COAL (Amsterdam)	123.50	0.8	0.61	-1.95
COAL (Australia,wk)	119.55	0.0	0.00	-2.33
<b>Industrial Metals</b>				
Alumunium	2,509.25	-1.5	-0.06	2.03
Nickel	23,425	350	1.52	-5.35
Tin	26,050	205	0.79	-3.16
<b>Precious Metal</b>				
Gold	1,502.80	-7.6	-0.50	5.73
Silver	34.81	0.1	0.18	12.62
<b>Soft Commodities</b>				
CPO (Malaysia)	3,107.00	-33.0	-1.05	-18.54
CPO (Netherlands)	1,085.00	-15.0	-1.36	-15.56
Rubber	4,622.64	116.6	2.59	-7.43
Corn	629.00	-69.0	-9.89	0.00
Wheat	584.75	-56.5	-8.81	-26.38
Soybeans	1,306.25	-28.0	-2.10	-6.28
Rice (Indonesia)	6,950.00	0.0	0.00	-2.11

### Winners

Stock	Price	(%)	Stock	Price	(%)
UNTR	24,900	5.29	MPPA	1,210	-2.42
GGRM	49,800	4.51	PNBN	910	-2.15
ASII	63,550	3.25	TPIA	3,925	-1.88
BBCA	7,650	2.68	ADMF	13,200	-1.86
BBNI	3,875	2.65	SMRA	1,140	-1.72
BYAN	23,500	2.62	BUMI	2,950	-1.67
BMRI	7,200	2.13	DSSA	15,250	-1.61
ADRO	2,450	2.08	ANTM	2,075	-1.19
BBRI	6,500	1.56	BMTR	840	-1.18
TLKM	7,350	1.38	ITMG	44,750	-0.89

### Losers

Stock	Price	(%)	Stock	Price	(%)
MPPA	1,210	-2.42	PNBN	910	-2.15
PNBN	910	-2.15	TPIA	3,925	-1.88
TPIA	3,925	-1.88	ADMF	13,200	-1.86
ADMF	13,200	-1.86	SMRA	1,140	-1.72
SMRA	1,140	-1.72	BUMI	2,950	-1.67
BUMI	2,950	-1.67	DSSA	15,250	-1.61
DSSA	15,250	-1.61	ANTM	2,075	-1.19
ANTM	2,075	-1.19	BMTR	840	-1.18
BMTR	840	-1.18	ITMG	44,750	-0.89
ITMG	44,750	-0.89			

### Regional Indices +/- (%) YTD (%)

MXWO	MSCI Word	1,331.2	17.2	1.31	3.99
SPX	S&P 500	1,320.6	13.2	1.01	5.01
<b>US</b>					
Dow Jones Industrial		12,414.3	152.9	1.25	7.23
Nasdaq	US	2,773.5	33.0	1.21	4.55
<b>Europe</b>					
EURO 50	Europe	272.9	3.1	1.13	-1.07
FTSE	London	5,945.7	89.8	1.53	0.78
DAX	German	7,376.2	82.1	1.13	6.68
CAC	France	3,982.2	58.0	1.48	4.66
SMI	Swiss	6,187.1	85.5	1.40	-3.87
<b>BRIC</b>					
BOVESPA	Brazil	62,403.6	69.7	0.11	-9.96
MICEX	Russia	1,666.6	6.6	0.40	-1.27
SENSEX	India	18,845.9	152.0	0.81	-8.11
NIFTY	India	5,647.4	46.9	0.84	-7.94
SHCOMP	China	2,762.1	33.6	1.23	-1.64
SZCOMP	China	1,155.9	16.0	1.41	-10.46

### Developed ASIA

Nikkei	Japan	9,816.1	18.8	0.19	-4.04
TPX	Japan	849.2	5.1	0.61	-5.52
HIS	Hong kong	22,398.1	336.9	1.53	-2.77
KOSPI	S.Korea	2,100.7	6.3	0.30	2.42
TAIEX	Taiwan	8,652.6	79.2	0.92	-3.57
FSSTI	Singapore	3,120.4	40.7	1.32	-2.18

### ASEAN

SET	Thailand	1,041.5	8.2	0.80	0.84
PCOMP	Philippines	4,291.2	41.9	0.99	2.14
KLCI	Malaysia	1,579.1	4.1	0.26	3.96
VNINDEX	Vietnam	432.5	-2.1	-0.47	-10.75

### Currency +/- (%) YTD (%)

EURUSD	Euro	1.450	0.007	0.46	8.35
GBPUSD	United Kingdom	1.605	-0.001	-0.06	2.82
USDCHF	Switzerland	0.840	0.006	0.74	-10.14
USDCAD	Canada	0.963	-0.006	-0.63	-3.47
AUDUSD	Australia	1.072	0.004	0.37	4.78
NZDUSD	New Zealand	0.829	0.004	0.47	6.28
USDJPY	Japan	80.6	-0.220	-0.27	-0.69
USDCNY	China	6.464	0.000	0.01	-2.17
USDHKD	Hongkong	7.782	-0.002	-0.02	0.11
USDSGD	Singapore	1.229	-0.005	-0.38	-4.28
Rupiah	Indonesia	8,579.0	-29.000	-0.34	-4.64

### Value (Rpbn)

Value (Rpbn)	Volume (Lot)	Freq (x)
BUMI 479,158	ENRG 580,100	BUMI 5,334
BMRI 379,533	BNBR 573,558	MICE 4,479
ASII 320,253	BUMI 323,817	BBRI 3,178
BBRI 264,760	BULL 278,198	BMRI 3,028
BBCA 201,507	LPKR 255,926	ASII 2,669
TLKM 187,630	DEWA 238,830	CPIN 2,329
INDF 168,079	KIJA 207,794	PYFA 2,241
ADRO 164,341	ELTY 207,691	EKAD 2,168
PGAS 134,317	BIPI 200,711	ADRO 2,080
BBNI 120,978	SIPD 181,104	INDF 2,015

Code	Last	Ytd Chg(%)	H-5 Chg (%)	Rekomendasi	STO	RSI	MACD	Bollinger Band		Support			Resistance			H-5	
								Top	Bottom	1	2	3	1	2	3	Highest	Lowest
AALI	23,500	-12.31	1.51	Trading	42.6	57.0	(48.5)	23,600	22,750	23,150	22,750	22,450	23,850	24,150	24,550	23,750	22,800
ACES	3,025	6.14	0.83	OverSold	39.5	63.2	74.3	3,050	3,000	2,850	2,675	2,550	3,150	3,275	3,450	3,200	2,800
ADRO	2,450	-8.41	3.16	TakeProfit	76.9	60.2	11.2	2,475	2,350	2,425	2,400	2,375	2,475	2,500	2,525	2,475	2,325
AKRA	2,125	25.00	7.32	StrongSell	81.2	78.0	100.1	2,250	2,050	2,100	2,075	2,050	2,150	2,175	2,200	2,200	1,910
ANTM	2,075	-16.16	1.22	OverBought	61.5	43.8	(24.9)	2,150	2,050	2,075	2,050	2,025	2,125	2,150	2,175	2,125	2,025
ASII	63,550	16.82	5.92	StrongSell	80.2	70.5	991.6	64,100	60,200	62,300	61,050	60,050	64,550	65,550	66,800	64,250	59,250
BBCA	7,650	18.60	4.79	StrongSell	83.3	69.8	73.6	7,700	7,350	7,500	7,350	7,250	7,750	7,850	8,000	7,700	7,150
BBNI	3,875	1.97	2.65	OverBought	76.0	57.0	(20.1)	3,900	3,725	3,850	3,800	3,775	3,925	3,950	4,000	3,900	3,650
BBRI	6,500	25.60	2.36	OverBought	64.3	57.3	22.1	6,550	6,350	6,450	6,400	6,350	6,550	6,600	6,650	6,550	6,300
BBTN	1,690	1.20	1.81	OverBought	72.7	55.4	3.4	1,720	1,650	1,680	1,670	1,660	1,700	1,710	1,720	1,700	1,630
BDMN	6,000	9.09	1.69	Trading	40.0	49.5	(35.3)	6,050	5,900	5,900	5,750	5,650	6,150	6,250	6,400	6,100	5,850
BISI	1,300	-30.48	-5.80	StrongBuy	10.5	29.9	(69.4)	1,340	1,290	1,280	1,260	1,230	1,330	1,360	1,380	1,430	1,290
BMRI	7,200	11.63	2.13	StrongSell	86.7	60.1	3.5	7,250	7,000	7,100	7,000	6,950	7,250	7,300	7,400	7,200	6,900
BSDE	900	2.27	1.12	OverBought	75.0	52.3	(4.5)	910	880	890	875	870	910	915	930	900	870
BTEL	365	55.32	2.82	StrongSell	85.7	51.6	(2.3)	373	357	360	355	350	370	375	380	370	345
BUMI	2,950	-5.60	-7.81	StrongBuy	15.2	33.1	(98.1)	3,200	2,850	2,925	2,875	2,825	3,025	3,075	3,125	3,225	2,925
CTRA	430	22.86	2.38	Trading	45.5	57.3	2.3	434	407	420	410	405	435	440	450	430	410
ELTY	148	-8.07	0.00	Trading	48.4	44.9	(2.4)	152	147	147	145	143	151	153	155	154	145
EXCL	6,150	17.14	-1.60	Trading	48.3	50.4	(42.8)	6,300	5,850	6,050	5,900	5,800	6,300	6,400	6,550	6,300	5,800
GGRM	49,800	21.32	6.07	StrongSell	81.2	72.4	1,169.7	50,400	45,550	48,500	47,200	46,400	50,600	51,400	52,700	50,100	46,000
HEXA	6,900	-4.83	4.55	TakeProfit	73.9	65.8	90.9	7,000	6,350	6,700	6,450	6,350	7,050	7,150	7,400	6,900	6,400
INCO	4,500	-9.55	0.00	Accumulate	35.7	36.1	(84.5)	4,550	4,425	4,475	4,425	4,400	4,550	4,575	4,625	4,550	4,425
INDF	5,750	16.16	2.68	Trading	52.9	63.0	39.8	5,800	5,500	5,650	5,550	5,450	5,850	5,950	6,050	5,850	5,500
INDY	3,850	-24.51	0.65	Trading	57.9	42.2	(78.4)	3,875	3,800	3,800	3,725	3,700	3,900	3,925	4,000	3,900	3,725
INTP	17,050	6.23	1.19	Trading	52.0	53.5	(27.4)	17,150	16,650	16,900	16,750	16,600	17,200	17,350	17,500	17,150	16,650
ISAT	5,100	-6.42	-0.97	Trading	41.7	44.2	(35.0)	5,250	5,000	5,050	5,000	4,950	5,150	5,200	5,250	5,200	5,000
ITMG	44,750	-17.59	-1.32	Trading	48.9	39.8	(459.2)	45,900	44,400	44,350	43,950	43,200	45,500	46,250	46,650	46,100	44,550
JSMR	3,625	2.11	2.84	TakeProfit	73.3	68.7	35.0	3,650	3,475	3,550	3,475	3,425	3,675	3,725	3,800	3,650	3,475
KLBF	3,375	1.50	-1.46	OverSold	35.3	47.6	(13.9)	3,450	3,350	3,375	3,350	3,325	3,425	3,450	3,475	3,475	3,350
LSIP	2,325	-8.46	1.09	Trading	55.6	48.5	(26.5)	2,350	2,275	2,300	2,275	2,250	2,350	2,375	2,400	2,325	2,250
MYOR	13,000	20.37	0.39	OverBought	72.2	58.4	171.7	13,250	12,700	12,800	12,600	12,500	13,100	13,200	13,400	13,200	12,550
PGAS	4,025	-10.06	0.63	Trading	46.2	54.0	(3.5)	4,050	3,975	4,000	3,975	3,925	4,075	4,125	4,150	4,075	3,950
PTBA	20,800	-13.15	0.24	Trading	46.2	44.7	(204.3)	20,900	20,450	20,650	20,500	20,350	20,950	21,100	21,250	21,050	20,350
RALS	780	-9.30	-2.50	OverSold	29.4	49.1	1.9	805	765	770	755	740	800	815	830	820	760
SGRO	3,450	6.15	1.47	OverBought	66.7	57.7	2.6	3,475	3,375	3,400	3,350	3,325	3,475	3,500	3,550	3,450	3,325
SMCB	2,200	-1.12	1.15	OverSold	33.3	52.5	(2.2)	2,225	2,125	2,175	2,125	2,100	2,250	2,275	2,325	2,225	2,125
SMGR	9,600	-2.54	-0.52	Trading	56.0	53.3	21.1	9,750	9,450	9,550	9,500	9,400	9,700	9,800	9,850	9,750	9,300
SMRA	1,140	5.56	-5.00	OverSold	31.8	48.2	3.8	1,190	1,130	1,130	1,110	1,090	1,170	1,190	1,210	1,200	1,130
TINS	2,500	-12.28	4.17	OverBought	70.0	45.0	(50.3)	2,525	2,450	2,475	2,450	2,425	2,525	2,550	2,575	2,525	2,375
TLKM	7,350	-8.13	2.80	OverBought	68.8	51.2	(92.2)	7,450	7,100	7,250	7,150	7,100	7,400	7,450	7,550	7,350	7,100
UNTR	24,900	2.47	5.96	Trading Sell	82.5	76.8	361.1	25,100	23,050	24,200	23,500	23,100	25,300	25,700	26,400	25,000	23,350
UNVR	14,900	-7.17	-0.67	OverSold	35.3	48.7	18.8	15,250	14,750	14,850	14,800	14,650	15,050	15,200	15,250	15,350	14,750

S1 = Support 1      S2 = Support 2      S3 = Support 3  
 R1 = Resisten 1      R2 = Resisten 2      R2 = Resisten 2  
 STO = Stochastic Oscillator  
 RSI = Relative Strength Index  
 MACD = Moving Average Convergence Divergence  
 H-5 = 5 hari sebelumnya

## RESEARCH TEAM

---

<b>Andrian Tanuwijaya</b>	Equity Analyst	(andrian.tanuwijaya@trimegah.com)
<b>Hanel Topada Era Tania</b>	Equity Analyst	(hanel.tania@trimegah.com)
<b>Paul Raymond Widjaja</b>	Equity Analyst	(paul.widjaja@trimegah.com)
<b>T Hedy Arifien</b>	Technical Analyst	(hedy@trimegah.com)
<b>Rovandi</b>	Research Assistant	(rovandi@trimegah.com)

## EQUITY CAPITAL MARKET TEAM

---

<b>Nathanael Benny Prasetyo</b>	Head of Retail ECM	(benny.prasetyo@trimegah.com)
<b>Windra Djulnaily</b>	Pluit, Jakarta	(windra.djulnaily@trimegah.com)
<b>Ariawan Anwar</b>	Artha Graha, Jakarta	(ariawan.anwar@trimegah.com)
<b>Ferry Zabur</b>	Kelapa Gading, Jakarta	(ferry.zabur@trimegah.com)
<b>Wirjawan Joesoef</b>	Mangga Dua, Jakarta	(iwan@trimegah.com)
<b>Lukman Abdul Azis</b>	Kebon Jeruk, Jakarta	(lukman@trimegah.com)
<b>Tutik Suciati</b>	Semarang, Jawa Tengah	(tuty.s@trimegah.com)
<b>Sonny Muljadi</b>	Surabaya, Jawa Timur	(sonny.muljadi@trimegah.com)
<b>Ni Luh Ketut Sri Agustini</b>	Denpasar, Bali	(sri.agustini@trimegah.com)
<b>Philip Fernando Suwandi</b>	Makassar, Sulawesi Selatan	(philip.fs@trimegah.com)
<b>agus.jatmiko</b>	Balikpapan, Kalimantan Timur	(agus.jatmiko@trimegah.com)
<b>Asep Saepudin</b>	Bandung, Jawa Barat	(asep.saepudin@trimegah.com)
<b>Asep Saepudin</b>	Cirebon, Jawa Barat	(asep.saepudin@trimegah.com)
<b>Very Wijaya</b>	Medan, Sumatera Utara	(very.wijaya@trimegah.com)
<b>Tantie Rivi Watie</b>	Pekanbaru, Riau	(tantierw@trimegah.com)
<b>Agus Bambang Suseno</b>	Solo, Jawa Tengah	(agus.suseno@trimegah.com)
<b>Agus Bambang Suseno</b>	Yogyakarta, Jawa Tengah	(agus.suseno@trimegah.com)
<b>Donny Kristanto Setiadi</b>	Palembang, Sumatra Selatan	(donny.kristanto@trimegah.com)
<b>Sonny Muljadi</b>	Malang, Jawa Timur	(sonny.muljadi@trimegah.com)

**PT Trimegah Securities Tbk**  
18<sup>th</sup> Fl, Artha Graha Building  
Jl. Jend. Sudirman Kav. 52-53  
Jakarta 12190, INDONESIA  
Tel : (6221) 2924 9088 Fax : (6221) 2924 9163

### DISCLAIMER

This report has been prepared by PT Trimegah Securities Tbk on behalf of itself and its affiliated companies and is provided for information purposes only. Under no circumstances is it to be used or considered as an offer to sell, or a solicitation of any offer to buy. This report has been produced independently and the forecasts, opinions and expectations contained herein are entirely those of Trimegah Securities.

While all reasonable care has been taken to ensure that information contained herein is not untrue or misleading at the time of publication, Trimegah Securities makes no representation as to its accuracy or completeness and it should not be relied upon as such. This report is provided solely for the information of clients of Trimegah Securities who are expected to make their own investment decisions without reliance on this report. Neither Trimegah Securities nor any officer or employee of Trimegah Securities accept any liability whatsoever for any direct or consequential loss arising from any use of this report or its contents. Trimegah Securities and/or persons connected with it may have acted upon or used the information herein contained, or the research or analysis on which it is based, before publication. Trimegah Securities may in future participate in an offering of the company's equity securities.