

IHSG

3,780.8

1.0

0.03%

Ulisan Pasar



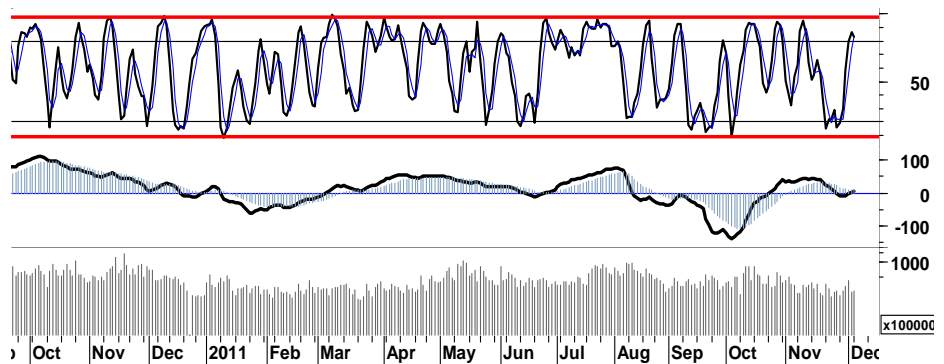
Dalam kondisi overbought serta ruang penguatan yang terbatas, IHSG pada perdagangan kemarin gagal melakukan penetrasi resistensi 3.800 dengan hanya mencatatkan rekor harga tertinggi 3.792. Dengan minimnya sentimen positif ditengah suasana pasar yang masih diselimuti kekhawatiran investor terhadap krisis utang di Eropa, mengakibatkan IHSG sulit untuk melanjutkan rally penguatan sebagaimana diharapkan serta membukukan penguatan tipis 0,03% dan ditutup pada level 3.781.

Indeks utama Eropa diwarnai oleh optimisme pihak regulator dalam upaya mengatasi krisis utang, DAX/CAC berhasil ditutup menguat masing-masing sebesar 1,0%/1,4%. Momentum tersebut, turut mendorong indeks bursa Amerika; DJI, S&P500 maupun Nasdaq bergerak menguat rata-rata 1,6%.

Secara umum, pergerakan IHSG dua hari terakhir mencerminkan kecenderungan

memasuki masa koreksi dan/atau konsolidasi. Dimana hal tersebut di tandai oleh kondisi fast moving oscillator maupun slow moving indicator, yang telah berada di area overbought. Dalam kondisi tersebut, MACD memberikan signal beli . Yang merupakan salah satu indicator penunjang yang dapat menahan laju keterpurukan IHSG yang berpotensi menekan harga untuk menguji support 3.750/3.720.

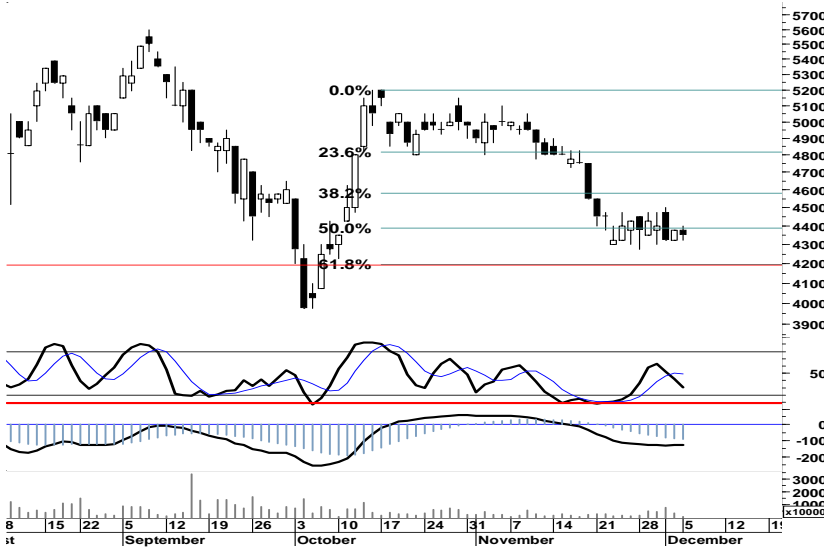
IHSG pada perdagangan hari ini, kami perkirakan akan bergerak dalam rentang harga 3.750 - 3.815.



S1	S2	R1	R2
3,765	3,750	3,795	3,810

Saham Pilihan

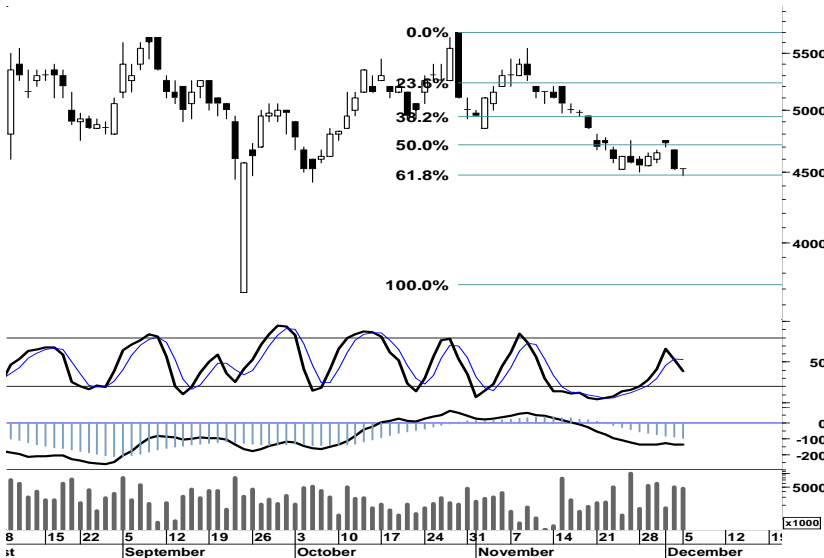
Saham	Harga (Rp)	Rekomendasi	Stochastic	RSI	BB Top	BB Bottom	S1	S2	R1	R2
BDMN	4,350	OverSold	30.77	40.07	4,450	4,300	4,325	4,300	4,450	4,475
EXCL	4,525	Accumulate	38.71	38.38	4,750	4,450	4,500	4,475	4,575	4,600
INTP	15,400	Trading	52.94	57.65	15,500	14,850	15,150	14,900	15,800	16,050
JSMR	3,800	OverSold	38.89	47.06	3,900	3,775	3,775	3,750	3,850	3,875
RALS	580	OverSold	35.00	42.84	615	555	570	555	595	610
UNVR	17,900	Trading	47.79	66.20	18,300	17,450	17,550	17,200	18,600	18,950



Ditutup pada area pivot 4.350, menempatkan BDMN pada posisi berimbang.

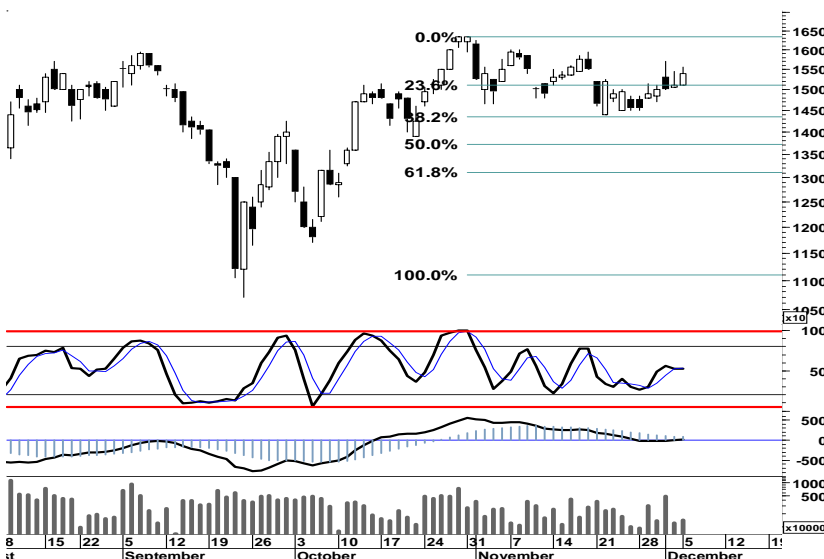
Signal Neutral pada stochastic oscillator (5d), dengan basis support harga 4.200 fibonacci retracement 61,8%, merupakan ruang serta peluang untuk akumulasi bagi saham tersebut untuk dapat keluar dari area konsolidasi (bearish).

S1	S2	R1	R2
4,325	4,300	4,450	4,475



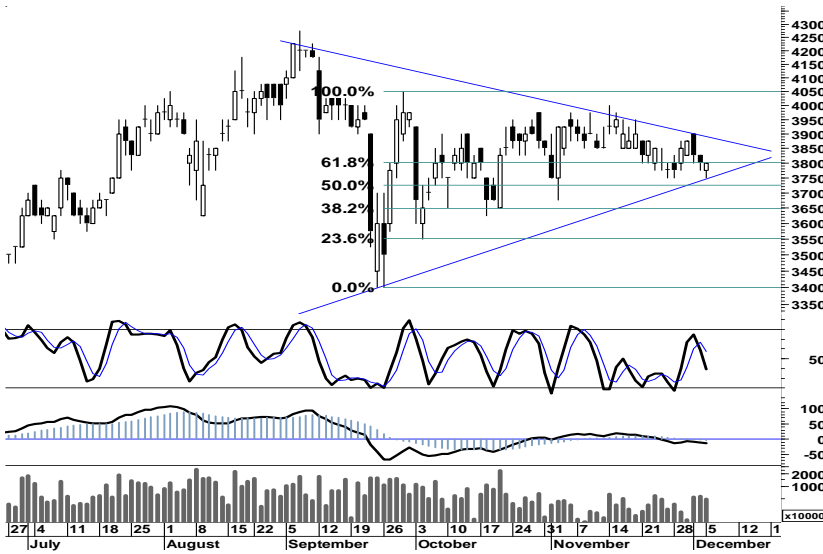
Serupa dengan BDMN. Untuk dapat keluar dari konsolidasi area 4.500 - 4.725, terbatasnya ruang pelemahan akan menjadi peluang akumulasi EXCL pada basis support 4.500.

S1	S2	R1	R2
4,500	4,475	4,575	4,600



Signal positif yang masih tercermin pada leading merupakan peluang bagi INTP untuk melanjutkan rally penguatan menguji target resistensi harga pada level 16.000.

S1	S2	R1	R2
15,150	14,900	15,800	16,050



Secara umum, JSMR berada pada kondisi short-term bullish. Trend Support 3.750 merupakan penentu arah bagi pergerakan JSMR selanjutnya.

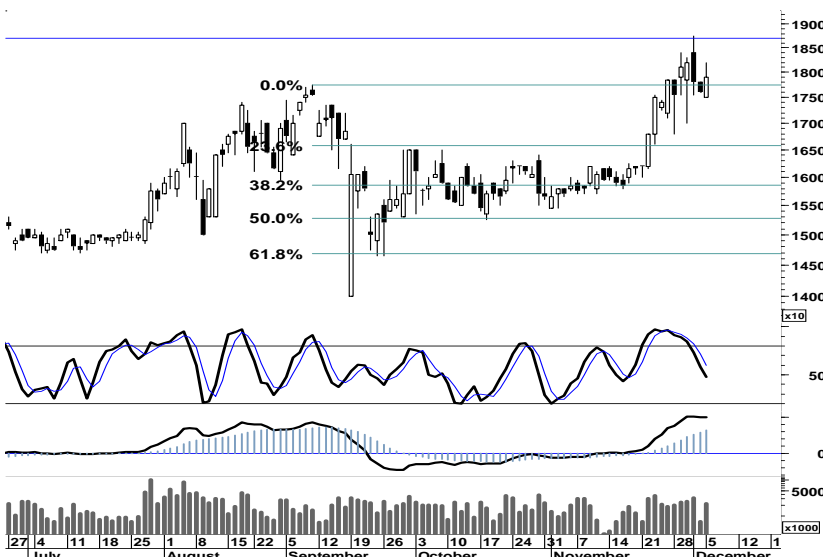
Ditutup pada area pivot 3.800 serta mendarat pada area trading positif, merupakan peluang bagi JSMR untuk bergerak dalam rentang harga 3.750 - 3.875 dan bertahan pada area konsolidasi.

S1	S2	R1	R2
3,775	3,750	3,850	3,875



Berada pada area support terendah sejak 2009, merupakan titik penentu arah bagi RALS untuk dapat keluar dari downtrend jangka pendek serta melakukan penetrasi trend resisten 620.

S1	S2	R1	R2
570	555	595	610



Berada pada area puncak harga serta support 17.750 seyogyanya UNVR berpotensi memasuki masa koreksi dengan target support harga 16.600.

Secara umum UNVR berada dalam kondisi strong bullish sejak pembalikan arah di medio September 2011. Signal positif lagging indicator, merupakan momentum bagi UNVR untuk bertahan pada bullish trend dan memanfaatkan ruang pergerakan positif dalam rentang harga 17.200 - 18.200.

S1	S2	R1	R2
17,550	17,200	18,600	18,950

TRADE DATA

JCI (IHSG) 3,780.8 1.0 0.03%

YTD (Rp)	2.1% Volume (m) :	4,901
YTD (USD)	1.7% Nilai (Rpbn) :	3,328
Moving Avg 20day	3,753 Mkt Cap (Rpbn) :	3,439
Moving Avg 50day	3,669 Market P/E (x) :	16.2
Moving Avg 200day	3,754 Market Div. Yield (%) :	2.4

Indonesia & Sectors +/- (%) YTD (%)

MSCI Indonesia	4,735.1	3.3	0.07	4.15
JII	529.4	1.2	0.23	-0.65
LQ45	669.6	0.1	0.02	1.25
JAKFIN Index	493.6	0.4	0.00	5.78
JAKINFR Index	694.9	-6.8	-0.01	-15.18
JAKMINE Index	2,560.7	-14.2	-0.01	-21.79
JAKCONS Index	1,320.0	1.0	0.00	20.59
JAKTRAD Index	573.0	5.6	0.01	20.86
JAKMIND Index	1,269.9	6.2	0.00	31.32
JAKBIND Index	386.0	3.2	0.01	-0.32
JAKPROP Index	210.3	-0.5	-0.00	3.53
JAKAGRI Index	2,166.5	-7.2	-0.00	-5.16

Commodities +/- (%) YTD (%)

CRB Index	313.00	-0.6	-0.18	-5.95
Oil & Gas				
Crude Oil	100.99	0.0	0.03	10.52
Natural Gas	3.46	-0.1	-3.43	-21.43
COAL (Rotterdam)	112.85	0.6	0.58	-14.12
COAL (Amsterdam)	113.03	0.6	0.56	-10.26
COAL (Australia,wk)	110.35	-0.5	-0.45	-9.84
Industrial Metals				
Aluminium	2,133.50	2.0	0.09	-13.25
Nickel	18,505	765	4.31	-25.23
Tin	20,000	5	0.03	-25.65
Precious Metal				
Gold	1,734.50	-16.8	-0.96	22.03
Silver	32.32	-0.3	-0.97	4.55
Soft Commodities				
CPO (Malaysia)	3,121.00	55.0	1.79	-18.17
CPO (Netherlands)	1,055.00	15.0	1.44	-17.90
Rubber	3,439.99	54.9	1.62	-31.12
Corn	591.00	-4.3	-0.71	-6.04
Wheat	611.50	-14.0	-2.24	-23.01
Soybeans	1,126.25	-9.5	-0.84	-19.19
Rice (Indonesia)	7,750.00	0.0	0.00	9.15

Winners

Stock	Price	(%)	Stock	Price	(%)
BHIT	290	11.54	FASW	3,800	-6.17
AMRT	4,400	8.64	BRAU	415	-3.49
MNCN	1,290	4.03	IMAS	12,450	-3.11
SMGR	9,650	2.66	PGAS	3,150	-2.33
INTP	15,400	1.99	BBNI	3,875	-1.90
UNVR	17,900	1.70	GGRM	65,300	-1.66
BUMI	2,100	1.20	BYAN	17,900	-1.65
ASII	71,550	0.77	PTBA	17,350	-1.42
BBRI	6,750	0.75	TLKM	7,250	-1.36
BBCA	8,050	0.63	AALI	22,000	-1.12

Losers

Regional Indices +/- (%) YTD (%)

MXWO	MSCI World	1,199.3	11.7	0.98	-6.31
SPX	S&P 500	1,257.1	12.8	1.03	-0.04
US					
Dow Jones Industrial		12,097.8	78.4	0.65	4.49
Nasdaq	US	2,655.8	28.8	1.10	0.11
Europe					
EURO 50	Europe	242.8	2.0	0.84	-11.99
FTSE	London	5,568.0	15.7	0.28	-5.63
DAX	Germany	6,106.1	25.4	0.42	-11.69
CAC	France	3,201.3	36.3	1.15	-15.86
SMI	Swiss	5,739.9	21.0	0.37	-10.82
BRIC					
BOVESPA	Brazil	58,910.5	1,024.6	1.77	-15.00
MICEX	Russia	1,517.9	12.1	0.80	-10.08
SENSEX	India	16,805.3	-41.5	-0.25	-18.06
NIFTY	India	5,039.2	-11.0	-0.22	-17.86
SHCOMP	China	2,333.2	-27.4	-1.16	-16.91
SZCOMP	China	964.6	-30.0	-3.01	-25.28

Developed ASIA

Nikkei	Japan	8,696.0	52.2	0.60	-14.99
TPX	Japan	748.6	4.5	0.60	-16.71
HIS	Hong kong	19,179.7	139.3	0.73	-16.74
KOSPI	S.Korea	1,922.9	6.9	0.36	-6.25
TAIEX	Taiwan	7,098.1	-42.6	-0.60	-20.89
FSSTI	Singapore	2,766.2	-7.1	-0.26	-13.29

ASEAN

SET	Thailand	1,029.4	0.0	0.00	-0.33
PCOMP	Philippines	4,291.7	0.8	0.02	2.16
KLCI	Malaysia	1,490.0	0.9	0.06	-1.91
VNINDEX	Vietnam	391.2	7.3	1.90	-19.29

Currency +/- (%) YTD (%)

EURUSD	Euro	1.340	0.001	0.07	0.13
GBPUSD	United Kingdom	1.565	0.005	0.33	0.23
USDCHF	Switzerland	0.921	-0.001	-0.08	-1.55
USDCAD	Canada	1.017	-0.003	-0.29	1.85
AUDUSD	Australia	1.027	0.006	0.55	0.37
NZDUSD	New Zealand	0.780	0.003	0.37	0.00
USDJPY	Japan	77.8	-0.170	-0.22	-4.07
USDCNY	China	6.364	0.004	0.06	-3.68
USDHKD	Hongkong	7.771	0.002	0.02	-0.03
USDSGD	Singapore	1.282	-0.004	-0.30	-0.12
Rupiah	Indonesia	9,038.0	13.000	0.14	0.47

Value

Value (Rpbn)	Volume (Lot)	Freq (x)
BMRI 183,856	KIJA 461,976	PNIN 6,352
BUMI 155,010	BHIT 390,074	TMPI 5,828
PGAS 91,924	ASRI 319,097	MNCN 2,774
SMGR 83,462	ENRG 255,297	BHIT 2,447
ASII 74,509	BKSL 179,392	KIJA 2,344
ASRI 73,022	DOID 158,743	POLY 2,328
TLKM 71,753	BIPI 157,708	MYOH 1,950
MNCN 55,073	TMPI 152,797	IGAR 1,782
DOID 54,496	BUMI 148,392	ASRI 1,692
BHIT 53,788	SSIA 143,802	LPCK 1,649

Code	Last	Ytd Chg(%)	H-5 Chg (%)	Rekomendasi	STO	RSI	MACD	Bollinger Band		Support			Resistance			H-5	
								Top	Bottom	1	2	3	1	2	3	Highest	Lowest
AALI	22,000	-17.91	5.26	OverBought	71.1	56.4	439.0	22,800	21,700	21,800	21,600	21,150	22,450	22,900	23,100	22,900	20,800
ACES	3,800	33.33	0.00	Trading	44.4	57.6	83.0	3,950	3,575	3,775	3,750	3,675	3,875	3,950	3,975	3,900	3,600
ADRO	1,970	-26.36	3.68	StrongSell	88.6	55.9	2.2	2,020	1,900	1,960	1,940	1,930	1,990	2,000	2,020	1,980	1,880
AISA	590	-24.36	-5.10	Trading	58.2	43.7	1.9	655	580	560	530	500	620	650	680	650	560
ANTM	1,670	-32.53	3.73	StrongSell	86.2	55.1	0.2	1,730	1,620	1,660	1,650	1,640	1,680	1,690	1,700	1,690	1,600
ASII	71,550	31.53	3.47	TakeProfit	68.3	60.0	961.7	71,850	70,700	70,800	70,000	69,500	72,100	72,600	73,400	72,550	69,000
BBCA	8,050	24.81	6.62	StrongSell	86.5	58.1	10.6	8,250	7,750	8,000	7,950	7,900	8,100	8,150	8,200	8,100	7,450
BBNI	3,875	1.97	4.73	StrongSell	93.2	55.6	14.4	4,050	3,750	3,850	3,800	3,750	3,950	4,000	4,050	3,950	3,550
BBRI	6,750	30.43	5.47	StrongSell	80.8	57.9	37.2	6,900	6,500	6,700	6,650	6,600	6,800	6,850	6,900	6,800	6,350
BDMN	4,350	-20.91	-0.57	OverSold	30.8	40.1	(101.5)	4,450	4,300	4,325	4,300	4,250	4,400	4,450	4,475	4,500	4,275
BISI	870	-53.48	2.35	OverBought	66.7	39.7	(24.5)	885	860	860	850	840	880	890	900	890	840
BMRI	6,700	3.88	4.69	StrongSell	84.6	51.1	(41.1)	6,900	6,450	6,650	6,600	6,550	6,750	6,800	6,850	6,750	6,300
BSDE	900	2.27	2.27	StrongSell	96.2	49.6	(4.9)	940	850	885	870	855	915	930	945	910	820
BTEL	275	17.02	5.77	OverBought	73.3	51.1	(0.3)	290	272	270	265	260	280	285	290	295	245
BUMI	2,100	-32.80	3.70	OverBought	60.8	51.1	(28.4)	2,175	2,000	2,075	2,025	2,000	2,150	2,175	2,225	2,150	1,980
BWPT	1,200	-8.40	5.26	StrongSell	87.5	62.6	14.0	1,240	1,160	1,190	1,180	1,170	1,210	1,220	1,230	1,210	1,130
ELTY	107	-33.54	0.94	OverBought	61.9	46.7	(1.6)	110	104	106	105	104	108	109	110	110	103
EXCL	4,525	-13.81	-0.55	Accumulate	38.7	38.4	(121.6)	4,750	4,450	4,500	4,475	4,450	4,550	4,575	4,600	4,750	4,475
GGRM	65,300	59.07	6.09	StrongSell	82.9	65.1	1,733.1	68,250	62,900	64,850	64,400	63,600	66,100	66,900	67,350	67,000	60,500
HEXA	8,450	16.55	3.05	StrongSell	92.0	60.7	119.4	8,700	8,250	8,400	8,350	8,300	8,500	8,550	8,600	8,500	8,150
HRUM	7,400	-21.69	6.47	OverBought	67.9	50.3	(110.8)	7,850	6,650	7,300	7,200	7,050	7,550	7,700	7,800	7,600	6,700
INCO	3,150	-36.68	2.44	OverBought	69.6	48.0	(43.4)	3,225	3,050	3,150	3,150	3,125	3,175	3,200	3,200	3,200	3,000
INDF	4,850	-2.02	3.74	StrongSell	93.8	50.3	(75.1)	5,000	4,675	4,825	4,775	4,750	4,900	4,925	4,975	4,875	4,600
INDY	2,275	-55.39	8.33	StrongSell	84.8	49.4	(69.7)	2,375	2,150	2,225	2,175	2,150	2,300	2,325	2,375	2,300	2,000
INTP	15,400	-4.05	5.84	Trading	52.9	57.6	78.6	15,500	14,850	15,150	14,900	14,700	15,600	15,800	16,050	15,700	14,500
ISAT	5,600	2.75	8.74	TakeProfit	72.5	60.8	121.6	6,200	5,100	5,550	5,500	5,400	5,700	5,800	5,850	5,950	5,100
ITMG	39,650	-26.98	4.89	StrongSell	80.8	45.5	(678.4)	41,350	37,750	39,250	38,850	38,300	40,200	40,750	41,150	40,450	36,250
JSMR	3,800	7.04	0.66	OverSold	38.9	47.1	(5.7)	3,900	3,775	3,775	3,750	3,725	3,825	3,850	3,875	3,900	3,750
KLBF	3,550	6.77	1.43	TakeProfit	76.0	61.4	30.8	3,600	3,500	3,525	3,500	3,450	3,600	3,650	3,675	3,600	3,375
LSIP	2,325	-8.46	-1.06	OverSold	33.3	59.1	60.8	2,400	2,300	2,325	2,300	2,300	2,350	2,350	2,375	2,400	2,300
MAPI	5,250	89.19	-1.87	OverSold	27.8	56.0	85.9	5,350	5,200	5,200	5,150	5,100	5,300	5,350	5,400	5,450	5,150
PGAS	3,150	-29.61	6.78	StrongSell	92.7	60.3	56.1	3,325	3,025	3,125	3,075	3,025	3,225	3,275	3,325	3,225	2,875
PTBA	17,350	-27.56	3.58	OverBought	72.2	53.0	15.8	17,900	16,800	17,250	17,150	16,900	17,600	17,850	17,950	17,750	16,500
RALS	580	-32.56	-1.69	OverSold	35.0	42.8	(16.3)	615	555	570	555	550	590	595	610	620	560
SGRO	3,000	-7.69	0.84	Trading	42.9	53.0	11.5	3,050	2,975	2,975	2,950	2,925	3,025	3,050	3,075	3,100	2,925
SMCB	1,960	-11.91	6.52	StrongSell	97.1	66.2	14.5	1,980	1,890	1,940	1,910	1,900	1,980	1,990	2,020	1,960	1,830
SMGR	9,650	-2.03	9.04	StrongSell	86.0	63.3	108.3	9,850	9,050	9,500	9,300	9,200	9,800	9,900	10,100	9,700	8,750
SMRA	1,060	-1.85	4.95	OverBought	61.8	48.8	(10.1)	1,110	1,030	1,040	1,020	980	1,100	1,140	1,160	1,130	990
TINS	1,730	-39.30	0.58	Trading	57.1	42.1	(29.1)	1,780	1,720	1,720	1,700	1,680	1,760	1,780	1,800	1,780	1,710
TLKM	7,250	-9.38	-0.68	Trading	42.9	42.7	(34.6)	7,450	7,150	7,200	7,150	7,050	7,350	7,450	7,500	7,500	7,150
UNTR	25,250	3.91	6.09	StrongSell	90.6	56.9	222.5	26,300	23,450	24,800	24,300	23,950	25,650	26,000	26,500	25,500	23,350
UNVR	17,900	11.53	1.99	Trading	47.8	66.2	516.9	18,300	17,450	17,550	17,200	16,850	18,250	18,600	18,950	18,750	16,800

S1 = Support 1 S2 = Support 2 S3 = Support 3
 R1 = Resisten 1 R2 = Resisten 2 R2 = Resisten 2
 STO = Stochastic Oscillator
 RSI = Relative Strength Index
 MACD = Moving Average Convergence Divergence
 H-5 = 5 hari sebelumnya

RESEARCH TEAM

Michele Gabriela	Equity Analyst	(michele.gabriela@trimegah.com)
T Hedy Arifien	Technical Analyst	(heldy@trimegah.com)
Rovandi	Research Assistant	(rovandi@trimegah.com)

EQUITY CAPITAL MARKET TEAM

Nathanael Benny Prasetyo	Head of Retail ECM	(benny.prasetyo@trimegah.com)
Windra Djulnaily	Pluit, Jakarta	(windra.djulnaily@trimegah.com)
Ariawan Anwar	Artha Graha, Jakarta	(ariawan.anwar@trimegah.com)
Ferry Zabur	Kelapa Gading, Jakarta	(ferry.zabur@trimegah.com)
Wirjawan Joesoef	Mangga Dua, Jakarta	(iwan@trimegah.com)
Lukman Abdul Azis	Kebon Jeruk, Jakarta	(lukman@trimegah.com)
Untung Wijaya	Semarang, Jawa Tengah	(untung.wijaya@trimegah.com)
Sonny Muljadi	Surabaya, Jawa Timur	(sonny.muljadi@trimegah.com)
Ni luh Ketut Sri Agustini	Denpasar, Bali	(sri.agustini@trimegah.com)
Philip Fernando Suwandi	Makassar, Sulawesi Selatan	(philip.fs@trimegah.com)
agus.jatmiko	Balikpapan, Kalimantan Timur	(agus.jatmiko@trimegah.com)
Asep Saepudin	Bandung, Jawa Barat	(asep.saepudin@trimegah.com)
Ariffianto	Cirebon, Jawa Barat	(ariffianto@trimegah.com)
Very Wijaya	Medan, Sumatera Utara	(very.wijaya@trimegah.com)
Tantie Rivi Watie	Pekanbaru, Riau	(tantierw@trimegah.com)
Agus Bambang Suseno	Solo, Jawa Tengah	(agus.suseno@trimegah.com)
Untung Wijaya	Yogyakarta, Jawa Tengah	(untung.wijaya@trimegah.com)
Donny Kristanto Setiadi	Palembang, Sumatra Selatan	(donny.kristanto@trimegah.com)
Rr. Putri Ayu Erikusuma	Malang, Jawa Timur	(putri.ayu@trimegah.com)

PT Trimegah Securities Tbk
18th Fl, Artha Graha Building
Jl. Jend. Sudirman Kav. 52-53
Jakarta 12190, INDONESIA
Tel : (6221) 2924 9088 Fax : (6221) 2924 9163

DISCLAIMER

This report has been prepared by PT Trimegah Securities Tbk on behalf of itself and its affiliated companies and is provided for information purposes only. Under no circumstances is it to be used or considered as an offer to sell, or a solicitation of any offer to buy. This report has been produced independently and the forecasts, opinions and expectations contained herein are entirely those of Trimegah Securities.

While all reasonable care has been taken to ensure that information contained herein is not untrue or misleading at the time of publication, Trimegah Securities makes no representation as to its accuracy or completeness and it should not be relied upon as such. This report is provided solely for the information of clients of Trimegah Securities who are expected to make their own investment decisions without reliance on this report. Neither Trimegah Securities nor any officer or employee of Trimegah Securities accept any liability whatsoever for any direct or consequential loss arising from any use of this report or its contents. Trimegah Securities and/or persons connected with it may have acted upon or used the information herein contained, or the research or analysis on which it is based, before publication. Trimegah Securities may in future participate in an offering of the company's equity securities.