

IHSG

3.769,2

-20,2

-0,53%

Ulisan Pasar



Seiring pelemahan indeks pada bursa-bursa utama Asia-Pacific kemarin, IHSG gagal bertahan dalam teritori positif. Sekalipun para investor asing membukukan nilai pembelian bersih sebesar Rp27,39miliar, hal tersebut belum mampu membendung tekanan jual sejumlah saham favorit maupun unggulan. IHSG terkoreksi -20,2 poin dan ditutup pada kisaran trend support 3.770-3.775, atau pada level 3.769.

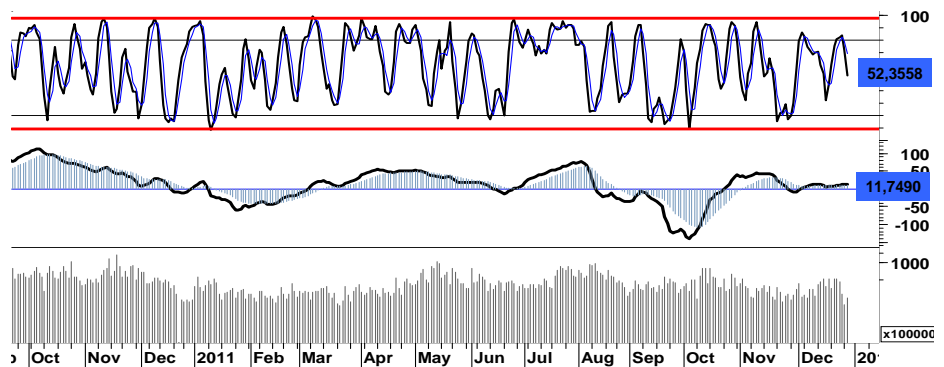
Sementara jelang tutup tahun, tekanan jual ikut mewarnai perdagangan di bursa-bursa utama Eropa yang gagal bertahan pada teritori positif. DAX/CAC ditutup terpuruk masing-masing -2,0% dan -1,0%. Demikian pula aktifitas pada bursa-bursa utama di Amerika yang juga diwarnai oleh aksi jual, DJI, S&P500 dan Nasdaq masing-masing melemah -1,1%, -1,2% dan -1,3%

Sebagai mana tercermin pada chart di kiri, IHSG berada dalam kondisi 'short-term bullish'. Mencoba bertahan pada trend-support 3.770-3.775. Konfirmasi deadcrossing %K dengan %D pada stochastic (5d) dan volume perdagangan

yang mengalami penurunan selama 2 hari berturut-turut dalam pekan ini, mengindikasikan potensi tekanan akan kembali membayangi pergerakan IHSG.

Muncul signal beli pada sejumlah saham favorit dan 2nd liner, diharapkan mampu menyemarakkan pergerakan IHSG pada perdagangan hari ini serta menahan probabilitas kelanjutan tekanan jual.

Pada perdagangan hari ini, kami perkirakan IHSG masih akan melewati swing harga yang kurang lebih sama dalam rentang harga 3.750 - 3.810.



S1	S2	R1	R2
3,750	3,720	3,790	3,815

Saham Pilihan

Saham	Harga (Rp)	Rekomendasi	Stochastic	RSI	BB Top	BB Bottom	S1	S2	R1	R2
AISA	500	Accumulate	39.68	35.84	529	475	494	487	507	514
ASRI	460	OverSold	33.33	54.94	470	454	447	434	494	507
BBNI	3,825	OverSold	35.00	46.76	3,950	3,800	3,775	3,725	3,925	3,975
ITMG	37,350	Trading	42.98	41.82	38,800	37,100	37,100	36,850	38,050	38,300
SMCB	2,100	OverSold	31.58	54.92	2,225	2,050	2,075	2,050	2,150	2,175
UNTR	25,250	Trading	45.24	53.01	25,550	24,800	25,050	24,850	25,450	25,650

AISA

500

Accumulate



Downtrend support harga 470 merupakan basis pembalikan arah bagi AISA. Ditutup pada area pivot support 490 menempatkan AISA pada kondisi berimbang, dimana penguatan memiliki peluang yang berimbang.

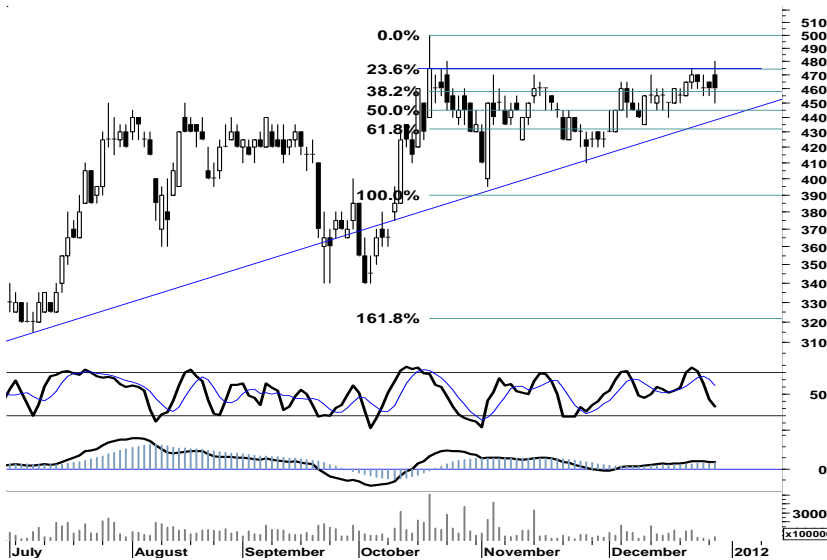
Pada perdagangan hari ini, AISA memiliki ruang gerak dalam rentang harga 480 - 510.

S1	S2	R1	R2
494	487	507	514

ASRI

460

OverSold



Terbatasnya ruang tekanan pada stochastic (5d) serta support kuat 450, membuka ruang bagi ASRI untuk menguji kembali resistensi 480.

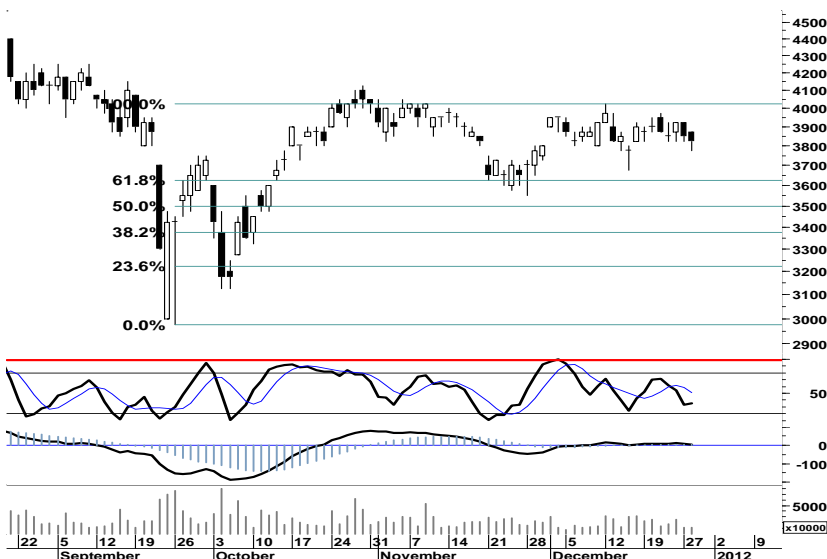
Dengan demikian, pada perdagangan hari ini ASRI berpotensi untuk bergerak dalam rentang harga 450-480.

S1	S2	R1	R2
447	434	494	507

BBNI

3,825

OverSold



Signal positif yang muncul pada stochastic (5d), merupakan momentum bagi BBNI untuk menguji resistensi 3.925.

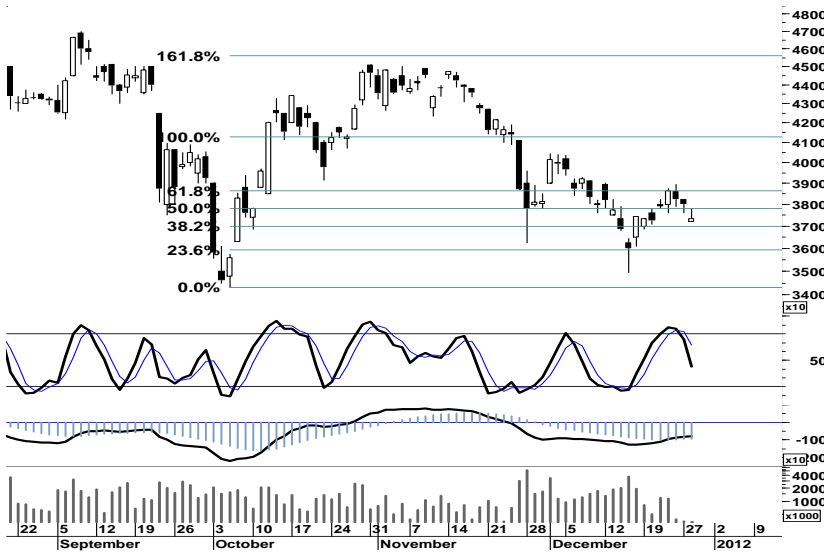
Dengan menempatkan stop-loss pada level 3.700, BBNI memiliki peluang untuk bergerak dalam rentang harga 3.775 - 3.925.

S1	S2	R1	R2
3,775	3,725	3,925	3,975

ITMG

37,350

Trading



38,2% fibonacci retracement merupakan basis support yang menentukan ITMG mampu atau tidaknya bertahan dalam teritori positif.

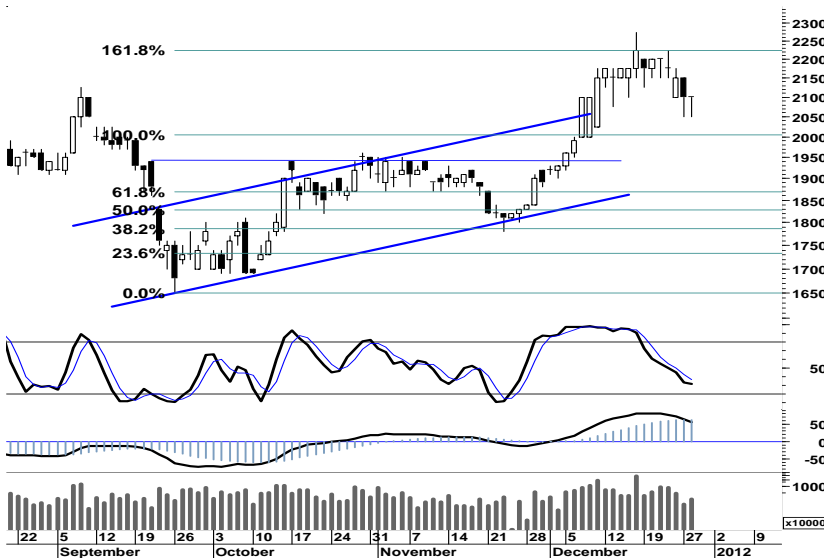
37,100 merupakan level support harga yang baik untuk melakukan buyback. Dengan ekspektasi bahwa ITMG akan mencoba bergerak dalam rentang harga 36.850 - 38.050.

S1	S2	R1	R2
37,100	36,850	38,050	38,300

SMCB

2,100

OverSold



Terbatasnya ruang tekanan pada area oversold, dengan indikasi signal positif stochastic (5d) SMCB memiliki peluang untuk menguji ruang dalam rentang harga 2.050 - 2.150.

S1	S2	R1	R2
2,075	2,050	2,150	2,175

UNTR

25,250

Trading



Perlawanan aksi beli yang terjadi menjelang akhir sesi, membuktikan bahwa basis support 24.650 merupakan titik penentu arah bagi UNTR.

Munculnya signal beli pada MACD, memberikan peluang bagi UNTR untuk menguji resistensi 25.450 - 25.500.

S1	S2	R1	R2
25,050	24,850	25,450	25,650

TRADE DATA

JCI (IHSG) 3,769.2 -20.2 -0.53%

YTD (Rp)	1.8%	Volume (m) :	5,793
YTD (USD)	0.7%	Nilai (Rpbn) :	3,328
Moving Avg 20day	3,769	Mkt Cap (Rptr) :	3,439
Moving Avg 50day	3,753	Market P/E (x) :	16.2
Moving Avg 200day	3,777	Market Div. Yield (%) :	2.4

Indonesia & Sectors +/- (%) YTD (%)

MSCI Indonesia	4,697.2	-53.3	-1.12	3.31
JII	529.2	-3.4	-0.63	-0.70
LQ45	663.7	-6.3	-0.94	0.35
JAKFIN Index	487.6	-5.0	-0.01	4.49
JAKINFR Index	690.9	-7.1	-0.01	-15.66
JAKMINE Index	2,493.6	-17.4	-0.01	-23.84
JAKCONS Index	1,288.8	-3.3	-0.00	17.73
JAKTRAD Index	569.0	2.0	0.00	20.02
JAKMIND Index	1,299.6	-6.9	-0.01	34.39
JAKBIND Index	397.5	-2.6	-0.01	2.63
JAKPROP Index	226.4	1.0	0.00	11.46
JAKAGRI Index	2,170.3	14.2	0.01	-4.99

Commodities +/- (%) YTD (%)

CRB Index	305.49	-2.8	-0.90	-8.21
Oil & Gas				
Crude Oil	99.36	-2.0	-1.95	8.73
Natural Gas	3.08	-0.0	-0.90	-29.99
COAL (Rotterdam)	111.05	-6.4	-5.41	-15.49
COAL (Amsterdam)	110.65	-1.4	-1.26	-12.15
COAL (Australia,wk)	109.80	0.8	0.78	-10.29
Industrial Metals				
Aluminium	1,987.00	-11.0	-0.55	-19.20
Nickel	18,475	-30	-0.16	-25.35
Tin	19,050	-250	-1.30	-29.18
Precious Metal				
Gold	1,564.10	-31.4	-1.97	10.04
Silver	27.19	-1.5	-5.24	-12.03
Soft Commodities				
CPO (Malaysia)	3,157.00	0.0	0.00	-17.23
CPO (Netherlands)	1,035.00	5.0	0.49	-19.46
Rubber	3,246.09	-1.2	-0.04	-35.00
Corn	642.50	9.3	1.46	2.15
Wheat	651.25	6.5	1.01	-18.00
Soybeans	1,198.25	-1.5	-0.13	-14.03
Rice (Indonesia)	8,200.00	100.0	1.23	15.49

Winners

Stock	Price	(%)	Stock	Price	(%)
IKIP	1,070	12.63	BUMI	2,125	-2.30
BFIN	5,600	12.56	BMRI	6,600	-2.22
BKSL	265	6.00	BBRI	6,700	-2.19
IMAS	13,550	5.45	TLKM	7,050	-2.08
MYOR	13,750	4.96	INTP	16,750	-1.76
ADMF	11,450	4.09	GGRM	60,100	-1.64
INCO	3,200	3.23	PGAS	3,150	-1.56
AUTO	3,275	3.15	BYAN	17,700	-1.39
JSMR	4,175	1.21	ASII	73,250	-1.01
UNTR	25,250	0.80	BBCA	7,950	-0.62

Losers

Stock	Price	(%)	Stock	Price	(%)
BUMI	2,125	-2.30	IKIP	1,070	12.63
BMRI	6,600	-2.22	BFIN	5,600	12.56
BBRI	6,700	-2.19	BKSL	265	6.00
TLKM	7,050	-2.08	IMAS	13,550	5.45
INTP	16,750	-1.76	MYOR	13,750	4.96
GGRM	60,100	-1.64	ADMF	11,450	4.09
PGAS	3,150	-1.56	INCO	3,200	3.23
BYAN	17,700	-1.39	AUTO	3,275	3.15
ASII	73,250	-1.01	JSMR	4,175	1.21
BBCA	7,950	-0.62	UNTR	25,250	0.80

Regional Indices +/- (%) YTD (%)

MXWO	MSCI World	1,168.0	-15.6	-1.32	-8.76
SPX	S&P 500	1,249.6	-15.8	-1.25	-0.64
US					
Dow Jones Industrial		12,151.4	-139.9	-1.14	4.96
Nasdaq	US	2,590.0	-35.2	-1.34	-2.37
Europe					
EURO 50	Europe	240.2	-1.7	-0.71	-12.91
FTSE	London	5,507.4	-5.3	-0.10	-6.65
DAX	Germany	5,771.3	-118.5	-2.01	-16.53
CAC	France	3,071.1	-32.0	-1.03	-19.28
SMI	Swiss	5,895.3	8.3	0.14	-8.40
BRIC					
BOVESPA	Brazil	56,533.8	-1,471.4	-2.54	-18.43
MICEX	Russia	1,383.1	-3.1	-0.22	-18.06
SENSEX	India	15,727.9	-146.1	-0.92	-23.31
NIFTY	India	4,705.8	-44.7	-0.94	-23.29
SHCOMP	China	2,170.0	3.8	0.18	-22.72
SZCOMP	China	849.8	-4.2	-0.49	-34.17

Developed ASIA

Nikkei	Japan	8,423.6	-16.9	-0.20	-17.65
TPX	Japan	721.5	-2.8	-0.39	-19.73
HIS	Hong kong	18,518.7	-110.5	-0.59	-19.61
KOSPI	S. Korea	1,825.1	-16.9	-0.92	-11.01
TAIEX	Taiwan	7,056.7	-28.4	-0.40	-21.35
FSSTI	Singapore	2,666.3	-7.4	-0.28	-16.42

ASEAN

SET	Thailand	1,028.2	-0.2	-0.02	-0.44
PCOMP	Philippines	4,336.6	-24.8	-0.57	3.23
KLCI	Malaysia	1,504.1	3.2	0.21	-0.97
VNINDEX	Vietnam	350.7	2.9	0.82	-27.65

Currency +/- (%) YTD (%)

EURUSD	Euro	1.294	-0.013	-0.99	-3.31
GBPUSD	United Kingdom	1.546	-0.021	-1.35	-0.98
USDCHE	Switzerland	0.943	0.009	0.93	0.80
USDCAD	Canada	1.024	0.006	0.57	2.65
AUDUSD	Australia	1.009	-0.006	-0.62	-1.36
NZDUSD	New Zealand	0.769	-0.004	-0.49	-1.45
USDJPY	Japan	77.9	0.060	0.08	-3.92
USDCNY	China	6.322	0.000	0.00	-4.32
USDHKD	Hongkong	7.775	-0.003	-0.03	0.02
USDSGD	Singapore	1.299	0.003	0.22	1.18
Rupiah	Indonesia	9,073.0	-2.000	-0.02	0.86

Value (Rpbn) Volume (Lot) Freq (x)

TLKM	94,929	BKSL	528,796	INAF	6,287
BMRI	79,589	INAF	413,387	TMPI	4,527
BBRI	76,826	ENRG	298,767	DART	2,761
ASII	75,170	BNBR	180,753	KAEF	2,134
BKSL	68,804	ELTY	151,572	JTPE	1,798
ADRO	49,825	DEWA	119,676	BKSL	1,565
BBCA	45,133	CNKO	116,599	BMRI	1,432
BBNI	41,167	KAEF	109,895	MNCN	1,368
INAF	38,204	TMPI	101,340	AISA	1,355
INTP	32,959	SIPD	88,763	ADRO	1,332

Code	Last	Ytd Chg(%)	H-5 Chg (%)	Rekomendasi	STO	RSI	MACD	Bollinger Band		Support			Resistance			H-5	
								Top	Bottom	1	2	3	1	2	3	Highest	Lowest
AALI	21,500	-19.78	3.61	StrongSell	90.0	52.7	(90.2)	21,750	21,050	21,350	21,150	21,050	21,650	21,750	21,950	21,550	20,700
ACES	4,150	45.61	6.41	StrongSell	97.1	69.3	81.4	4,225	3,825	4,050	3,950	3,900	4,200	4,250	4,350	4,150	3,750
ADRO	1,770	-33.83	2.31	OverBought	60.0	36.6	(53.2)	1,790	1,760	1,760	1,740	1,730	1,790	1,800	1,820	1,790	1,730
AISA	500	-35.90	3.09	Accumulate	39.7	35.8	(26.9)	529	475	494	487	484	504	507	514	560	440
ANTM	1,620	-34.55	1.25	OverBought	66.7	45.6	(14.6)	1,630	1,610	1,600	1,580	1,570	1,630	1,640	1,660	1,630	1,590
ASII	73,250	34.65	2.16	OverBought	73.0	55.5	826.0	74,250	72,950	72,600	71,900	71,200	74,000	74,700	75,400	74,500	71,550
ASRI	460	50.82	-1.08	OverSold	33.3	54.9	5.3	470	454	447	434	417	477	494	507	480	450
BBCA	7,950	23.26	0.63	OverBought	70.0	50.8	13.9	8,100	7,950	7,850	7,750	7,650	8,050	8,150	8,250	8,050	7,850
BBNI	3,825	0.66	-1.92	OverSold	35.0	46.8	(3.6)	3,950	3,800	3,775	3,725	3,675	3,875	3,925	3,975	3,975	3,775
BBRI	6,700	29.47	-2.90	OverSold	31.8	48.7	35.1	7,000	6,650	6,600	6,500	6,350	6,850	7,000	7,100	7,050	6,650
BDMN	4,150	-24.55	-0.60	Trading	35.3	32.9	(110.8)	4,225	4,150	4,125	4,075	4,050	4,200	4,225	4,275	4,250	4,100
BISI	900	-51.87	0.00	Trading	50.0	44.4	(4.7)	935	895	890	880	870	910	920	930	940	880
BKSL	265	145.37	3.92	Trading	64.7	54.2	(1.6)	268	241	254	242	234	274	282	294	270	235
BMRI	6,600	2.33	-3.65	OverSold	29.2	46.2	(13.0)	6,900	6,550	6,550	6,450	6,350	6,750	6,850	6,950	7,000	6,550
BSDE	980	11.36	1.03	OverSold	30.8	58.2	16.4	1,000	960	975	970	965	985	990	995	1,000	960
BTEL	260	10.64	4.00	StrongSell	90.0	47.7	(4.9)	265	244	250	240	235	265	270	280	260	240
BUMI	2,125	-32.00	-2.30	OverSold	38.9	45.6	(2.2)	2,225	2,125	2,100	2,075	2,025	2,175	2,225	2,250	2,250	2,075
BWPT	1,120	-14.50	1.82	Trading	52.6	39.5	(14.4)	1,150	1,110	1,110	1,100	1,090	1,130	1,140	1,150	1,150	1,090
CPIN	2,125	18.72	-6.59	StrongBuy	18.5	29.6	(79.3)	2,300	2,075	2,100	2,075	2,025	2,175	2,225	2,250	2,350	2,100
ELTY	118	-26.71	-3.28	StrongBuy	19.0	53.7	2.8	125	117	116	114	111	121	124	126	126	117
EXCL	4,500	-14.29	7.14	StrongSell	84.4	46.4	(103.3)	4,650	4,300	4,475	4,425	4,400	4,550	4,575	4,625	4,550	4,150
GGRM	60,100	46.41	-3.84	StrongBuy	6.1	42.1	(124.4)	62,800	59,550	59,750	59,350	58,600	60,900	61,650	62,050	63,550	60,100
HEXA	8,700	20.00	0.58	Trading	46.7	63.7	116.6	8,800	8,650	8,700	8,650	8,650	8,750	8,750	8,800	8,850	8,600
HRUM	6,750	-28.57	1.50	Trading	52.4	38.2	(207.0)	6,900	6,700	6,700	6,650	6,600	6,800	6,850	6,900	6,950	6,600
INCO	3,200	-35.68	6.67	TakeProfit	88.2	55.6	(39.9)	3,250	3,000	3,150	3,075	3,050	3,250	3,275	3,350	3,200	2,975
INDF	4,650	-6.06	2.76	OverBought	76.0	40.5	(70.3)	4,750	4,625	4,625	4,575	4,550	4,700	4,725	4,775	4,750	4,525
INDY	2,150	-57.84	4.88	StrongSell	83.3	45.3	(44.2)	2,250	2,100	2,150	2,125	2,125	2,175	2,175	2,200	2,200	2,050
INTP	16,750	4.36	2.76	OverBought	69.0	59.7	423.6	17,350	16,650	16,550	16,300	16,050	17,050	17,300	17,550	17,300	16,300
ISAT	5,250	-3.67	-0.94	OverSold	30.4	47.4	4.8	5,450	5,200	5,200	5,150	5,050	5,350	5,450	5,500	5,550	5,150
ITMG	37,350	-31.22	0.27	Trading	43.0	41.8	(813.6)	38,800	37,100	37,100	36,850	36,500	37,700	38,050	38,300	38,950	37,100
JPFA	3,650	14.96	-8.75	Trading	6.3	16.7	(205.3)	3,975	3,550	3,625	3,600	3,550	3,700	3,750	3,775	4,100	3,650
JSMR	4,175	17.61	1.83	Trading	47.1	59.4	66.2	4,225	4,100	4,150	4,125	4,100	4,200	4,225	4,250	4,225	4,075
KLBF	3,400	2.26	0.00	Trading	50.0	46.4	(21.7)	3,425	3,375	3,375	3,350	3,325	3,425	3,450	3,475	3,450	3,325
LSIP	2,250	-11.42	5.88	OverBought	68.2	52.3	(13.4)	2,300	2,200	2,225	2,200	2,175	2,275	2,300	2,325	2,300	2,125
MAIN	970	-68.71	5.43	OverBought	75.0	57.3	(2.8)	980	930	955	940	925	985	1,000	1,015	980	910
MAPI	5,150	85.59	3.00	Trading	46.7	50.1	(29.3)	5,250	5,050	5,100	5,050	5,000	5,200	5,250	5,300	5,200	4,975
MBAI	13,500	-14.01	13.92	StrongSell	98.0	66.0	(59.6)	13,750	11,100	11,900	10,300	9,500	14,300	15,100	16,700	13,500	11,100
PGAS	3,150	-29.61	0.00	Trading	56.3	52.9	31.2	3,250	3,150	3,125	3,100	3,075	3,175	3,200	3,225	3,250	3,125
PTBA	17,150	-28.39	3.94	StrongSell	87.7	52.3	(85.6)	17,750	16,600	17,050	16,950	16,750	17,350	17,550	17,650	17,400	16,200
RALS	710	-96.60	4.41	Trading	40.7	63.1	24.9	750	665	685	660	645	725	740	765	750	660
SGRO	2,975	-8.46	0.85	Trading	47.1	49.2	(8.5)	3,025	2,950	2,950	2,925	2,900	3,000	3,025	3,050	3,050	2,900
SIPD	55	-25.68	5.77	StrongSell	87.5	53.3	(0.7)	56	52	53	51	50	56	57	59	55	51
SMCB	2,100	-5.62	-4.55	OverSold	31.6	54.9	55.6	2,225	2,050	2,075	2,050	2,025	2,125	2,150	2,175	2,225	2,050
SMGR	11,000	11.68	3.77	Trading	47.8	65.2	425.5	11,200	10,750	10,900	10,750	10,650	11,150	11,250	11,400	11,300	10,500
SMRA	1,200	11.11	0.00	Trading	42.3	57.4	25.8	1,230	1,180	1,190	1,170	1,160	1,220	1,230	1,250	1,240	1,160
SSIA	700	-22.22	4.48	StrongSell	81.5	78.4	75.9	730	690	690	675	660	720	735	750	730	650
TINS	1,660	-41.75	0.61	Trading	26.7	34.2	(35.8)	1,680	1,660	1,650	1,640	1,630	1,670	1,680	1,690	1,700	1,650
TLKM	7,050	-11.88	0.71	OverBought	76.5	40.6	(69.6)	7,250	7,050	6,950	6,850	6,700	7,200	7,350	7,450	7,200	6,900
UNTR	25,250	3.91	1.61	Trading	45.2	53.0	61.8	25,550	24,800	25,050	24,850	24,750	25,350	25,450	25,650	25,450	24,750
UNVR	18,300	14.02	1.95	Trading	50.7	58.8	373.8	18,850	18,050	18,000	17,700	17,450	18,550	18,800	19,100	19,000	17,950

S1 = Support 1 **S2** = Support 2 **S3** = Support 3
R1 = Resisten 1 **R2** = Resisten 2 **R2** = Resisten 2
STO = Stochastic Oscillator
RSI = Relative Strength Index
MACD = Moving Average Convergence Divergence
H-5 = 5 hari sebelumnya

RESEARCH TEAM

Michele Gabriela	Equity Analyst	(michele.gabriela@trimegah.com)
T Hedy Arifien	Technical Analyst	(heldy@trimegah.com)
Rovandi	Research Assistant	(rovandi@trimegah.com)

EQUITY CAPITAL MARKET TEAM

Nathanael Benny Prasetyo	Head of Retail ECM	(benny.prasetyo@trimegah.com)
Windra Djulnaily	Pluit, Jakarta	(windra.djulnaily@trimegah.com)
Ariawan Anwar	Artha Graha, Jakarta	(ariawan.anwar@trimegah.com)
Ferry Zabur	Kelapa Gading, Jakarta	(ferry.zabur@trimegah.com)
Wirjawan Joesoef	Mangga Dua, Jakarta	(iwan@trimegah.com)
Very Wijaya	Kebon Jeruk, Jakarta	(very.wijaya@trimegah.com)
Untung Wijaya	Semarang, Jawa Tengah	(untung.wijaya@trimegah.com)
Sonny Muljadi	Surabaya, Jawa Timur	(sonny.muljadi@trimegah.com)
Ni Made Dwi Hapsari Wijayanti	Denpasar, Bali	(dwihapsari.wijayanti@trimegah.com)
Philip Fernando Suwandi	Makassar, Sulawesi Selatan	(philip.fs@trimegah.com)
Agus Jatmiko	Balikpapan, Kalimantan Timur	(agus.jatmiko@trimegah.com)
Asep Saepudin	Bandung, Jawa Barat	(asep.saepudin@trimegah.com)
Ariffianto	Cirebon, Jawa Barat	(ariffianto@trimegah.com)
Juliana Effendy	Medan, Sumatera Utara	(juliana.effendi@trimegah.com)
Tantie Rivi Watie	Pekanbaru, Riau	(tantierw@trimegah.com)
Agus Bambang Suseno	Solo, Jawa Tengah	(agus.suseno@trimegah.com)
Untung Wijaya	Yogyakarta, Jawa Tengah	(untung.wijaya@trimegah.com)
Donny Kristanto Setiadi	Palembang, Sumatra Selatan	(donny.kristanto@trimegah.com)
Rr. Putri Ayu Erikusuma	Malang, Jawa Timur	(putri.ayu@trimegah.com)

PT Trimegah Securities Tbk
18th Fl, Artha Graha Building
Jl. Jend. Sudirman Kav. 52-53
Jakarta 12190, INDONESIA
Tel : (6221) 2924 9088 Fax : (6221) 2924 9163

DISCLAIMER

This report has been prepared by PT Trimegah Securities Tbk on behalf of itself and its affiliated companies and is provided for information purposes only. Under no circumstances is it to be used or considered as an offer to sell, or a solicitation of any offer to buy. This report has been produced independently and the forecasts, opinions and expectations contained herein are entirely those of Trimegah Securities.

While all reasonable care has been taken to ensure that information contained herein is not untrue or misleading at the time of publication, Trimegah Securities makes no representation as to its accuracy or completeness and it should not be relied upon as such. This report is provided solely for the information of clients of Trimegah Securities who are expected to make their own investment decisions without reliance on this report. Neither Trimegah Securities nor any officer or employee of Trimegah Securities accept any liability whatsoever for any direct or consequential loss arising from any use of this report or its contents. Trimegah Securities and/or persons connected with it may have acted upon or used the information herein contained, or the research or analysis on which it is based, before publication. Trimegah Securities may in future participate in an offering of the company's equity securities.