

IHSG

3.850,3 -71,4 -1,82%

Ulasan Pasar



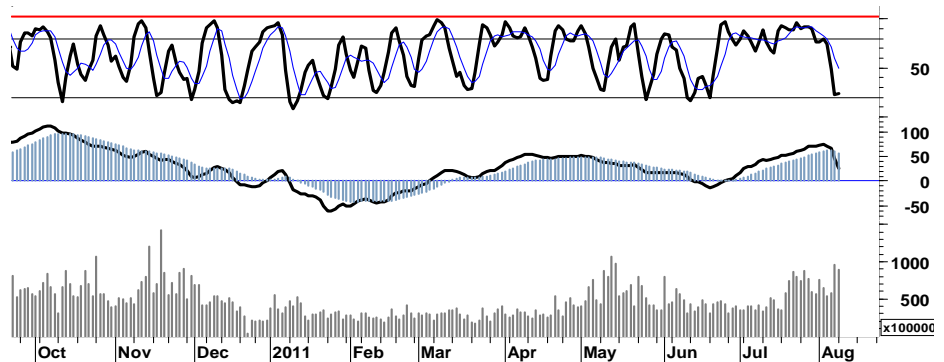
Perburuan terhadap saham-saham unggulan maupun favorit yang telah terpuruk cukup dalam, terutama selama sepekan terakhir. Mampu menahan gempuran tekanan jual yang mencoba level terendah intraday 3.715 pada area support psikologis 3.710 - 3.720, yang akhirnya ditutup dengan sisa perlambatan pelemahan sebesar 1,8% di level 3.850.

Maraknya transaksi perdagangan yang terjadi, dimana pada perdagangan kemarin tercatat 217rb kejadian yang diwarnai oleh berlanjutnya aksi jual asing yang membukukan total nilai penjualan bersih sebesar Rp1,136triliun/ Perlawan aksi bargain hunting terhadap 54 saham yang mencatatkan penguatan mampu, menahan laju pelemahan sebagai akibat gempuran tekanan jual pada 239 emiten yang masih terpuruk menguji support-support harga masing-masing saham. Hal ini membuktikan bahwasanya animo serta tingkat kepercayaan para pelaku pasar akan kondisi positif makro

maupun mikro domestik, masih cukup tinggi. Atas dasar asumsi tersebut, peluang untuk terjadinya minor rebound pada area oversold terbuka cukup lebar.

Apabila pada perdagangan hari ini IHSG mampu mengawali perdagangan pada area positif di atas support 3.750, maka peluang untuk memanfaatkan momentum swing positif menguji resistensi 3.940 terbuka lebar.

Perketat stop-loss harga pada level 3.720, untuk mengantisipasi kelanjutan ancaman tekanan jual yang berpotensi menyeret IHSG menguji support 3.720 menuju target support 3.620.



S1	S2	R1	R2
3,740	3,620	3,940	4,035

Saham Pilihan

Saham	Harga (Rp)	Rekomendasi	Stochastic	RSI	BB Top	BB Bottom	S1	S2	R1	R2
AALI	22,300	Trading Buy	39.52	39.80	23,650	21,300	21,000	19,700	23,700	25,000
BMRI	7,350	Trading Buy	33.33	42.61	7,950	7,100	7,000	6,650	7,750	8,100
INTP	14,500	Trading Buy	28.45	31.09	15,350	13,550	13,700	12,900	15,600	16,400
ITMG	44,250	Accumulate	11.56	31.53	51,100	41,400	43,200	42,150	45,350	46,400
TINS	2,075	StrongBuy	17.81	18.43	2,500	1,925	2,025	1,950	2,150	2,225
UNTR	23,950	Accumulate	20.17	39.51	26,750	22,800	23,300	22,650	24,850	25,500

AALI

22,300

Trading Buy



Perlawanan aksi beli yang terjadi, berhasil menahan laju tekanan pada AALI untuk mencoba bertahan pada zona hijau trading di area oversold stochastic.

Indikasi signal positif golden-cross pada stochastic, diharapkan mampu mendorong AALI bergerak mix-positif menguji celah resistensi harga pada level 22.700.

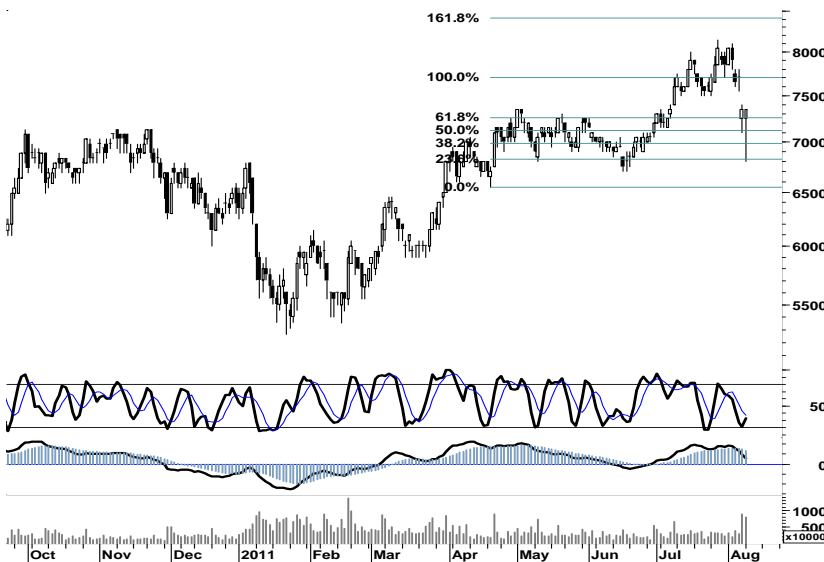
Kami perkirakan AALI akan mencoba bergerak dalam rentang harga 21.700 - 23.000

S1	S2	R1	R2
21,000	19,700	23,700	25,000

BMRI

7,350

Trading Buy



Indikasi signal golden cross pada stochastic serta celah resistensi pada level 7.550, merupakan peluang bagi BMRI untuk menguji pergerakan dalam interval harga 7.000 - 7.750.

S1	S2	R1	R2
7,000	6,650	7,750	8,100

INTP

14,500

Trading Buy



Terbatasnya ruang pelemahan serta terciptanya golden cross pada stochastic di area oversold kemarin, membuka peluang bagi INTP untuk bergerak mix positif pada perdagangan hari ini.

Setidaknya terbuka potensi bagi INTP untuk menguji ruang gerak dalam interval harga 14.350-14.850.

S1	S2	R1	R2
13,700	12,900	15,600	16,400

ITMG

44,250

Accumulate



Terbatasnya ruang tekanan serta memasuki zona akumulasi, merupakan peluang bagi ITMG untuk menguji ketahanan support 43.200 selanjutnya menuju resistensi 45.350.

Apabila demikian, maka peluang akumulasi dapat dilakukan pada saat ITMG menguji swing negatif pada area support 43.500 - 43.800.

S1	S2	R1	R2
43,200	42,150	45,350	46,400

TINS

2,075

StrongBuy



Signal positif candle stick sebagai akibat perlawanan bargain hunting terhadap saham TINS di area oversold, merupakan salah satu katalis yang diharapkan akan mendorong TINS menapaki zona distribusi pembentukan harga untuk kembali menguji kekuatan resistensi harga 2.100.

S1	S2	R1	R2
2,025	1,950	2,150	2,225

UNTR

23,950

Accumulate



Secara umum UNTR mampu bertahan pada area bullish. Dimana perlawanan kekuatan beli yang terjadi kemarin, mampu mendorong UNTR melakukan pull-back melampaui basis support pada retracement 50% di level 23.800.

Dengan demikian, terbuka peluang bagi UNTR untuk kembali pada zona positif trading menguji resistensi harga selanjutnya pada level 24.400.

Akumulasi UNTR dapat dilakukan pada saat menguji swing support 23.300 - 23.500.

S1	S2	R1	R2
23,300	22,650	24,850	25,500

TRADE DATA

JCI (IHSG) 3,850.3 -71.4 -1.82%

YTD (Rp)	4.0%	Volume (m) :	8,756
YTD (USD)	9.2%	Nilai (Rpbn) :	3,328
Moving Avg 20day	4,065	Mkt Cap (Rpbn) :	3,439
Moving Avg 50day	3,931	Market P/E (x) :	16.2
Moving Avg 200day	3,708	Market Div. Yield (%) :	2.4

Indonesia & Sectors +/- (%) YTD (%)

MSCI Indonesia	4,777.6	-82.4	-1.70	5.08
JII	530.0	-8.0	-1.48	-0.54
LQ45	681.9	-11.3	-1.64	3.11
JAKFIN Index	513.4	-8.9	-0.02	10.02
JAKINFR Index	730.0	-8.0	-0.01	-10.89
JAKMINE Index	3,029.1	-82.6	-0.03	-7.48
JAKCONS Index	1,236.2	-17.6	-0.01	12.93
JAKTRAD Index	523.0	-14.7	-0.03	10.32
JAKMIND Index	1,187.8	-38.0	-0.03	22.83
JAKBIND Index	386.4	-1.1	-0.00	-0.21
JAKPROP Index	218.3	-3.5	-0.02	7.47
JAKAGRI Index	2,252.6	-23.9	-0.01	-1.39

Commodities +/- (%) YTD (%)

CRB Index	317.74	-9.1	-2.77	-4.53
Oil & Gas				
Crude Oil	81.31	-5.6	-6.41	-11.02
Natural Gas	3.94	-0.0	-0.15	-10.67
COAL (Rotterdam)	125.00	-1.2	-0.91	-4.87
COAL (Amsterdam)	125.22	-0.8	-0.63	-0.58
COAL (Australia,wk)	118.75	-0.5	-0.38	-2.98
Industrial Metals				
Aluminium	2,369.25	-18.8	-0.79	-3.66
Nickel	21,250	-1,255	-5.58	-14.14
Tin	22,505	-1,845	-7.58	-16.34
Precious Metal				
Gold	1,711.60	61.4	3.72	20.42
Silver	39.38	1.2	3.06	27.40
Soft Commodities				
CPO (Malaysia)	3,036.00	-43.0	-1.40	-20.40
CPO (Netherlands)	1,055.00	-20.0	-1.86	-17.90
Rubber	4,731.90	-61.5	-1.28	-5.25
Corn	675.25	-17.8	-2.56	7.35
Wheat	656.50	-22.5	-3.31	-17.34
Soybeans	1,304.50	-23.5	-1.77	-6.40
Rice (Indonesia)	7,300.00	0.0	0.00	2.82

Winners

Stock	Price	(%)	Stock	Price	(%)
ACES	3,400	9.68	PLIN	1,650	-23.26
INTP	14,500	4.69	BUMI	2,775	-5.13
MYOR	15,250	3.39	CPIN	2,500	-4.76
PGAS	3,275	3.15	EXCL	5,100	-4.67
AALI	22,300	3.00	ASII	65,050	-3.20
SMGR	9,150	2.81	INDF	6,200	-3.13
ICBP	5,700	1.79	BBCA	8,050	-3.01
INVS	8,550	1.79	BBRI	6,500	-2.26
SMMA	3,350	1.52	GGRM	50,000	-2.25
JSMR	3,875	1.31	UNVR	16,000	-1.54

Losers

Stock	Price	(%)	Stock	Price	(%)
PLIN	1,650	-23.26	BUMI	2,775	-5.13
BUMI	2,775	-5.13	CPIN	2,500	-4.76
CPIN	2,500	-4.76	EXCL	5,100	-4.67
EXCL	5,100	-4.67	ASII	65,050	-3.20
ASII	65,050	-3.20	INDF	6,200	-3.13
INDF	6,200	-3.13	BBCA	8,050	-3.01
BBCA	8,050	-3.01	BBRI	6,500	-2.26
BBRI	6,500	-2.26	GGRM	50,000	-2.25
GGRM	50,000	-2.25	UNVR	16,000	-1.54
UNVR	16,000	-1.54			

Regional Indices +/- (%) YTD (%)

MXWO	MSCI World	1,132.9	-61.1	-5.12	-11.50
SPX	S&P 500	1,119.5	-79.9	-6.66	-10.99
US					
Dow Jones Industrial		10,809.9	-634.8	-5.55	-6.63
Nasdaq	US	2,357.7	-174.7	-6.90	-11.13
Europe					
EURO 50	Europe	229.0	-9.9	-4.14	-16.98
FTSE	London	5,069.0	-178.0	-3.39	-14.08
DAX	Germany	5,923.3	-312.9	-5.02	-14.33
CAC	France	3,125.2	-153.4	-4.68	-17.86
SMI	Swiss	4,968.0	-204.1	-3.95	-22.81
BRIC					
BOVESPA	Brazil	48,668.3	-4,280.9	-8.08	-29.78
MICEX	Russia	1,499.8	-87.2	-5.50	-11.15
SENSEX	India	16,990.2	-315.7	-1.82	-17.16
NIFTY	India	5,118.5	-92.8	-1.78	-16.56
SHCOMP	China	2,526.8	-99.6	-3.79	-10.02
SZCOMP	China	1,113.4	-51.6	-4.43	-13.75

Developed ASIA

Nikkei	Japan	9,097.6	-202.3	-2.18	-11.06
TPX	Japan	782.9	-18.1	-2.26	-12.90
HIS	Hong kong	20,490.6	-455.6	-2.17	-11.05
KOSPI	S. Korea	1,869.5	-74.3	-3.82	-8.85
TAIEX	Taiwan	7,552.8	-300.3	-3.82	-15.82
FSSTI	Singapore	2,884.0	-110.8	-3.70	-9.59

ASEAN

SET	Thailand	1,078.2	-15.2	-1.39	4.40
PCOMP	Philippines	4,331.2	-106.3	-2.40	3.10
KLCI	Malaysia	1,497.0	-27.4	-1.80	-1.44
VNINDEX	Vietnam	396.4	-4.5	-1.12	-18.21

Currency +/- (%) YTD (%)

EURUSD	Euro	1.418	-0.010	-0.72	5.94
GBPUSD	United Kingdom	1.632	-0.007	-0.45	4.52
USDCHF	Switzerland	0.755	-0.012	-1.62	-19.27
USDCAD	Canada	0.995	0.013	1.27	-0.35
AUDUSD	Australia	1.019	-0.026	-2.44	-0.45
NZDUSD	New Zealand	0.821	-0.022	-2.66	5.22
USDJPY	Japan	77.8	-0.630	-0.80	-4.13
USDCNY	China	6.436	-0.005	-0.08	-2.59
USDHKD	Hongkong	7.807	-0.000	-0.01	0.44
USDSGD	Singapore	1.223	0.006	0.46	-4.72
Rupiah	Indonesia	8,525.0	-23.000	-0.27	-5.24

Value

Value (Rpbn)	Volume (Lot)	Freq (x)
BUMI 813,351	ENRG 1,833,406	PGAS 8,450
BBRI 710,755	BNBR 1,566,693	BUMI 6,490
BMRI 563,430	ELTY 962,509	BBRI 5,986
ASII 524,800	DEWA 733,757	CPIN 5,947
PGAS 482,665	KIJA 627,430	BMRI 4,800
BBCA 404,315	BKSL 597,771	ENRG 4,673
BBNI 345,432	BUMI 592,824	ASII 4,126
TLKM 243,457	SIPD 437,025	BHIT 3,499
CPIN 214,526	ASRI 363,786	BBCA 3,108
INDF 183,438	PGAS 308,853	ELTY 3,051

Code	Last	Ytd Chg(%)	H-5 Chg (%)	Rekomendasi	STO	RSI	MACD	Bollinger Band		Support			Resistance			H-5	
								Top	Bottom	1	2	3	1	2	3	Highest	Lowest
AALI	22,300	-16.79	-5.11	Trading Buy	39.5	39.8	(136.9)	23,650	21,300	21,000	19,700	19,000	23,000	23,700	25,000	23,700	20,400
ACES	3,400	19.30	0.00	Trading Buy	45.5	58.2	85.3	3,600	3,075	3,150	2,875	2,750	3,550	3,675	3,950	3,500	3,000
ADRO	2,325	-13.08	-13.08	Accumulate	16.2	32.8	(0.5)	2,725	2,200	2,300	2,250	2,225	2,375	2,400	2,450	2,700	2,275
AISA	690	-11.54	-9.21	Trading Buy	37.5	38.1	3.9	770	670	660	630	610	710	730	760	770	650
ANTM	1,870	-24.44	-7.65	Trading Buy	19.3	26.6	(33.4)	2,060	1,830	1,830	1,790	1,750	1,910	1,950	1,990	2,050	1,820
ASII	65,050	19.58	-9.21	Accumulate	17.5	39.2	847.0	72,650	63,100	63,650	62,250	60,400	66,900	68,750	70,150	72,400	64,100
BBCA	8,050	24.81	-5.85	Trading	45.8	47.7	182.6	8,900	7,850	7,700	7,350	7,150	8,250	8,450	8,800	8,850	7,550
BBNI	4,100	7.89	-10.38	Trading Buy	20.0	49.6	101.7	4,475	3,925	4,000	3,875	3,825	4,175	4,225	4,350	4,600	3,925
BBRI	6,500	25.60	-9.72	Trading Buy	31.8	41.1	75.2	7,450	6,200	6,350	6,150	6,050	6,650	6,750	6,950	7,250	6,250
BDMN	5,200	-5.45	-7.14	Accumulate	35.7	30.5	(124.5)	5,750	5,050	5,050	4,900	4,800	5,300	5,400	5,550	5,650	5,000
BISI	1,230	-34.22	-16.89	Accumulate	18.8	29.0	(22.8)	1,440	1,180	1,180	1,130	1,080	1,280	1,330	1,380	1,490	1,170
BMRI	7,350	13.95	-8.70	Trading Buy	33.3	42.6	62.5	7,950	7,100	7,000	6,650	6,450	7,550	7,750	8,100	8,100	6,800
BSDE	920	4.55	-14.02	Trading Sell	34.6	42.0	21.4	1,070	880	860	795	750	970	1,015	1,080	1,080	840
BTEL	330	40.43	-7.04	Trading Buy	38.1	29.4	(3.9)	359	318	319	307	299	339	347	359	355	315
BUMI	2,775	-11.20	-11.20	Trading Buy	26.5	31.0	(26.8)	3,350	2,650	2,675	2,550	2,475	2,875	2,950	3,075	3,250	2,625
BWPT	1,180	-9.92	-4.84	Trading Buy	23.1	45.3	9.9	1,270	1,160	1,160	1,140	1,130	1,190	1,200	1,220	1,270	1,150
ELTY	152	-5.59	-13.14	Accumulate	24.1	41.2	1.8	177	139	141	130	124	158	164	175	177	135
EXCL	5,100	-2.86	-8.11	Accumulate	28.4	22.5	(168.0)	5,850	4,950	5,000	4,900	4,800	5,250	5,350	5,450	5,800	4,975
GGRM	50,000	21.80	-5.66	Trading Sell	32.0	46.4	693.6	53,650	49,050	49,500	48,950	48,400	50,600	51,150	51,700	54,300	49,500
HEXA	7,600	4.83	-7.32	Accumulate	15.8	48.2	186.1	8,350	7,350	7,500	7,400	7,300	7,700	7,800	7,900	8,300	7,450
HRUM	9,000	-4.76	-7.22	Accumulate	28.6	33.1	(74.4)	10,050	8,750	8,750	8,450	8,300	9,200	9,350	9,650	9,950	8,600
INCO	3,700	-25.63	-13.45	Trading Buy	7.0	13.1	(140.6)	4,300	3,525	3,650	3,600	3,550	3,750	3,800	3,850	4,325	3,650
INDF	6,200	25.25	-3.13	Trading Sell	48.7	55.3	168.9	6,600	6,150	6,050	5,900	5,700	6,400	6,600	6,750	6,700	6,000
INDY	3,200	-37.25	-12.33	Trading Buy	22.0	17.6	(104.5)	3,775	3,050	3,025	2,850	2,725	3,325	3,450	3,625	3,750	2,975
INTP	14,500	-9.66	-6.45	Trading Buy	28.4	31.1	(562.1)	15,350	13,550	13,700	12,900	12,350	15,050	15,600	16,400	15,700	13,400
ISAT	5,400	-0.92	-3.57	Trading Sell	43.3	48.7	113.8	5,950	5,350	5,300	5,150	5,000	5,600	5,750	5,900	5,900	5,300
ITMG	44,250	-18.51	-12.81	Accumulate	11.6	31.5	41.6	51,100	41,400	43,200	42,150	41,600	44,800	45,350	46,400	51,350	42,650
JSMR	3,875	9.15	-2.52	Trading Buy	35.3	57.1	81.6	4,025	3,775	3,725	3,575	3,450	4,000	4,125	4,275	4,050	3,675
KLBF	3,175	-4.51	-9.93	Trading Buy	26.0	27.9	(46.0)	3,500	3,050	3,050	2,925	2,825	3,275	3,375	3,500	3,550	3,025
LSIP	2,275	-10.43	-4.21	Trading Buy	40.0	39.8	2.6	2,450	2,225	2,200	2,125	2,075	2,325	2,375	2,450	2,425	2,150
MAPI	4,225	52.25	-7.14	Trading Buy	38.0	48.3	99.4	4,600	4,150	4,100	3,950	3,875	4,325	4,400	4,550	4,725	4,025
PGAS	3,275	-26.82	-18.13	Trading Buy	13.3	20.6	(121.5)	4,075	2,825	3,100	2,925	2,825	3,375	3,475	3,650	4,000	3,025
PTBA	19,350	-19.21	-9.58	Accumulate	27.4	24.6	(187.6)	21,800	18,500	18,800	18,200	17,900	19,700	20,000	20,600	21,500	18,500
RALS	790	-8.14	-9.20	Trading Buy	23.3	43.1	5.6	855	770	770	750	740	800	810	830	890	760
SGRO	3,375	3.85	-8.16	Accumulate	22.5	37.0	9.2	3,750	3,225	3,275	3,175	3,100	3,450	3,525	3,625	3,700	3,225
SMCB	1,950	-12.36	-7.14	Accumulate	29.7	30.5	(37.9)	2,140	1,880	1,850	1,750	1,670	2,030	2,110	2,210	2,125	1,820
SMGR	9,150	-7.11	-2.66	Trading Buy	34.0	37.4	(140.9)	9,500	8,800	8,850	8,550	8,400	9,300	9,450	9,750	9,650	8,650
SMRA	1,150	6.48	-9.45	Trading Buy	20.4	43.6	13.4	1,280	1,090	1,120	1,080	1,060	1,180	1,200	1,240	1,310	1,100
TINS	2,075	-27.19	-16.16	StrongBuy	17.8	18.4	(78.7)	2,500	1,925	2,025	1,950	1,925	2,125	2,150	2,225	2,475	1,980
TLKM	7,500	-6.25	0.00	Trading Sell	48.5	54.4	91.2	7,800	7,400	7,400	7,300	7,150	7,650	7,800	7,900	7,900	7,350
UNTR	23,950	-1.44	-13.07	Accumulate	20.2	39.5	234.7	26,750	22,800	23,300	22,650	22,200	24,400	24,850	25,500	27,650	23,050
UNVR	16,000	-0.31	0.63	Trading Sell	59.8	58.7	343.0	17,050	15,550	15,600	15,200	14,750	16,450	16,900	17,300	17,000	15,600

S1 = Support 1 S2 = Support 2 S3 = Support 3
 R1 = Resisten 1 R2 = Resisten 2 R2 = Resisten 2
 STO = Stochastic Oscillator
 RSI = Relative Strength Index
 MACD = Moving Average Convergence Divergence
 H-5 = 5 hari sebelumnya

RESEARCH TEAM

Andrian Tanuwijaya	Equity Analyst	(andrian.tanuwijaya@trimegah.com)
Hanel Topada Era Tania	Equity Analyst	(hanel.tania@trimegah.com)
Paul Raymond Widjaja	Equity Analyst	(paul.widjaja@trimegah.com)
T Hedy Arifien	Technical Analyst	(hedy@trimegah.com)
Rovandi	Research Assistant	(rovandi@trimegah.com)

EQUITY CAPITAL MARKET TEAM

Nathanael Benny Prasetyo	Head of Retail ECM	(benny.prasetyo@trimegah.com)
Windra Djulnaily	Pluit, Jakarta	(windra.djulnaily@trimegah.com)
Ariawan Anwar	Artha Graha, Jakarta	(ariawan.anwar@trimegah.com)
Ferry Zabur	Kelapa Gading, Jakarta	(ferry.zabur@trimegah.com)
Wirjawan Joesoef	Mangga Dua, Jakarta	(iwan@trimegah.com)
Lukman Abdul Azis	Kebon Jeruk, Jakarta	(lukman@trimegah.com)
Tutik Suciati	Semarang, Jawa Tengah	(tuty.s@trimegah.com)
Sonny Muljadi	Surabaya, Jawa Timur	(sonny.muljadi@trimegah.com)
Ni Luh Ketut Sri Agustini	Denpasar, Bali	(sri.agustini@trimegah.com)
Philip Fernando Suwandi	Makassar, Sulawesi Selatan	(philip.fs@trimegah.com)
agus.jatmiko	Balikpapan, Kalimantan Timur	(agus.jatmiko@trimegah.com)
Asep Saepudin	Bandung, Jawa Barat	(asep.saepudin@trimegah.com)
Asep Saepudin	Cirebon, Jawa Barat	(asep.saepudin@trimegah.com)
Very Wijaya	Medan, Sumatera Utara	(very.wijaya@trimegah.com)
Tantie Rivi Watie	Pekanbaru, Riau	(tantierw@trimegah.com)
Agus Bambang Suseno	Solo, Jawa Tengah	(agus.suseno@trimegah.com)
Agus Bambang Suseno	Yogyakarta, Jawa Tengah	(agus.suseno@trimegah.com)
Donny Kristanto Setiadi	Palembang, Sumatra Selatan	(donny.kristanto@trimegah.com)
Sonny Muljadi	Malang, Jawa Timur	(sonny.muljadi@trimegah.com)

PT Trimegah Securities Tbk
18th Fl, Artha Graha Building
Jl. Jend. Sudirman Kav. 52-53
Jakarta 12190, INDONESIA
Tel : (6221) 2924 9088 Fax : (6221) 2924 9163

DISCLAIMER

This report has been prepared by PT Trimegah Securities Tbk on behalf of itself and its affiliated companies and is provided for information purposes only. Under no circumstances is it to be used or considered as an offer to sell, or a solicitation of any offer to buy. This report has been produced independently and the forecasts, opinions and expectations contained herein are entirely those of Trimegah Securities.

While all reasonable care has been taken to ensure that information contained herein is not untrue or misleading at the time of publication, Trimegah Securities makes no representation as to its accuracy or completeness and it should not be relied upon as such. This report is provided solely for the information of clients of Trimegah Securities who are expected to make their own investment decisions without reliance on this report. Neither Trimegah Securities nor any officer or employee of Trimegah Securities accept any liability whatsoever for any direct or consequential loss arising from any use of this report or its contents. Trimegah Securities and/or persons connected with it may have acted upon or used the information herein contained, or the research or analysis on which it is based, before publication. Trimegah Securities may in future participate in an offering of the company's equity securities.