

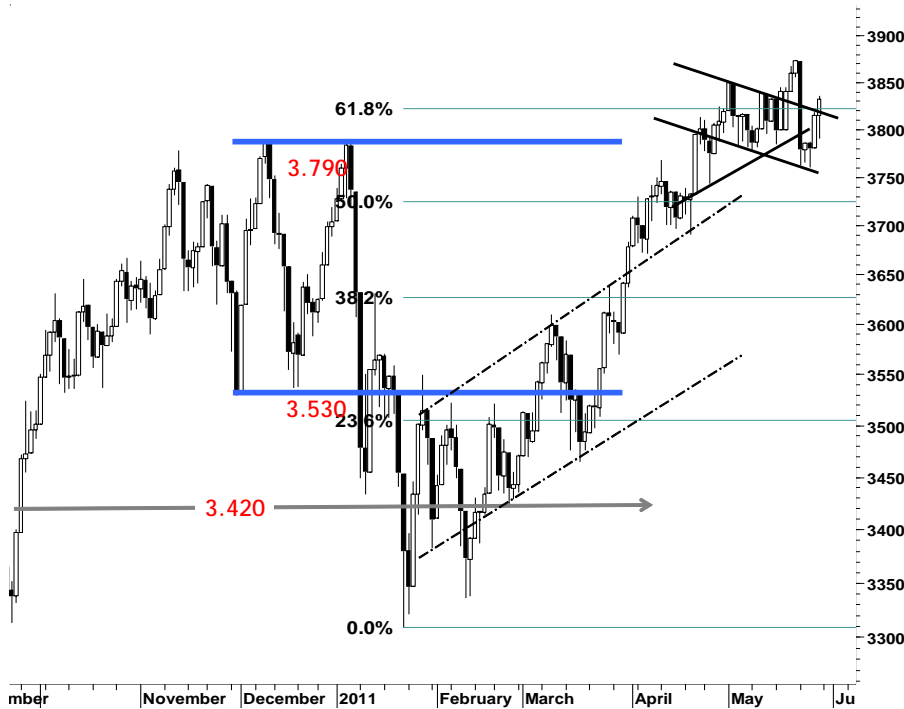
IHSG

3.832,4

17,6

0,46%

Ulisan Pasar



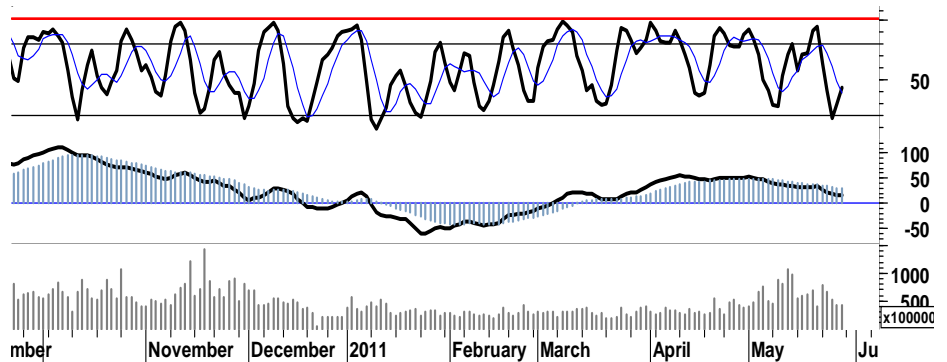
IHSG pada akhir pekan perdagangan kemarin kembali membukukukan kenaikan sebesar 0,5% dan di tutup di level 3.832, di tengah kondisi indeks di beberapa bursa utama asia yang bergerak fluktuatif namun cukup kondusif.

Sejumlah saham berbasis komoditas lunak maupun komoditas tambang mendorong berlanjutnya penguatan IHSG, yang juga ditopang oleh pembelian selektif terhadap saham-saham unggulan seperti ASII, BMRI, UNTR dan beberapa saham favorit lainnya.

Secara umum IHSG cukup berhasil bertumpu pada basis support 3.750 untuk tetap berada dalam uptrend-channel. Yang disertai oleh kembalinya arus masuk modal asing, dengan tercatat akumulasi nilai pembelian bersih sebesar Rp330miliar.

Signal positif yang muncul pada stochastic maupun MACD, diharapkan mampu mendorong kembali IHSG untuk melanjutkan rally penguatan

menguji resistensi berikut di level 3.850. Namun ditengah minimnya sentimen positif kami perkiraan IHSG di awal pekan ini akan bergerak moderat, dalam kisaran interval harga 3.810 - 3.860.



S1	S2	R1	R2
3,800	3,775	3,850	3,865

## Saham Pilihan

Saham	Harga (Rp)	Rekomendasi	Stochastic	RSI	BB Top	BB Bottom	S1	S2	R1	R2
AAJI	23,200	OverSold	38.30	48.38	23,500	22,700	23,050	22,900	23,400	23,550
ADRO	2,400	StrongSell	86.67	61.63	2,450	2,325	2,375	2,350	2,450	2,475
BBTN	1,630	OverSold	30.77	44.64	1,640	1,610	1,620	1,600	1,660	1,680
INTP	17,250	OverBought	72.22	58.29	17,300	16,900	16,950	16,650	17,550	17,850
SGRO	3,425	OverSold	25.00	55.36	3,475	3,375	3,400	3,350	3,500	3,550
UNTR	22,550	Trading	59.52	53.45	22,700	21,900	22,300	22,050	22,850	23,100

**AALI**

**23,200**

**OverSold**



Signal positif stochastic yang tercermin dalam pergerakan harga, membuka peluang bagi AALI untuk bergerak melanjutkan rally penguatannya.

Apabila AALI berhasil melakukan penetrasi resisten harga 23.550, maka target resisten celah harga terdekat adalah 23.800.

S1	S2	R1	R2
23,050	22,900	23,400	23,550

**ADRO**

**2,400**

**StrongSell**



Untuk dapat keluar dari area konsolidasi, ADRO harus mampu melampaui resistensi harga 2.400 untuk mencapai target resistensi terdekat di level 2.550 - 2.600.

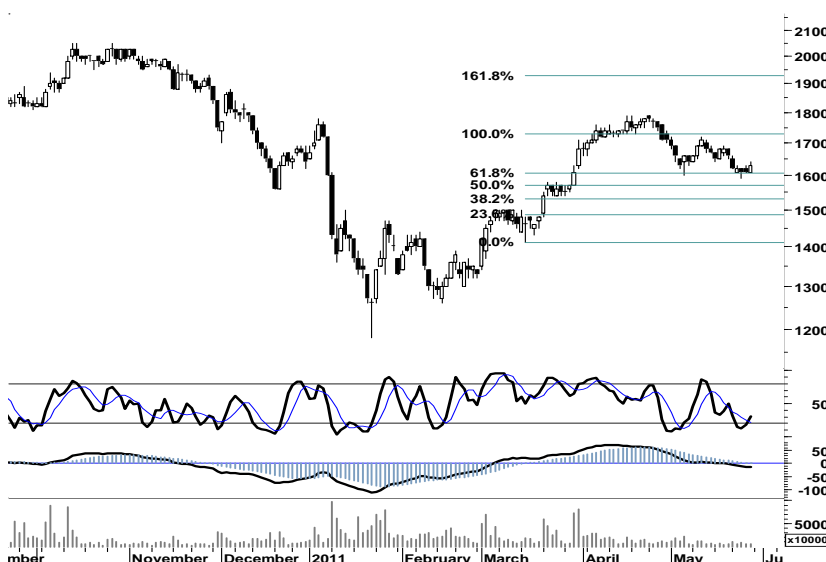
Perketat stop-loss harga di level 2.300, apabila ADRO gagal melampaui resistensi kuat 2.400.

S1	S2	R1	R2
2,375	2,350	2,450	2,475

**BBTN**

**1,630**

**OverSold**



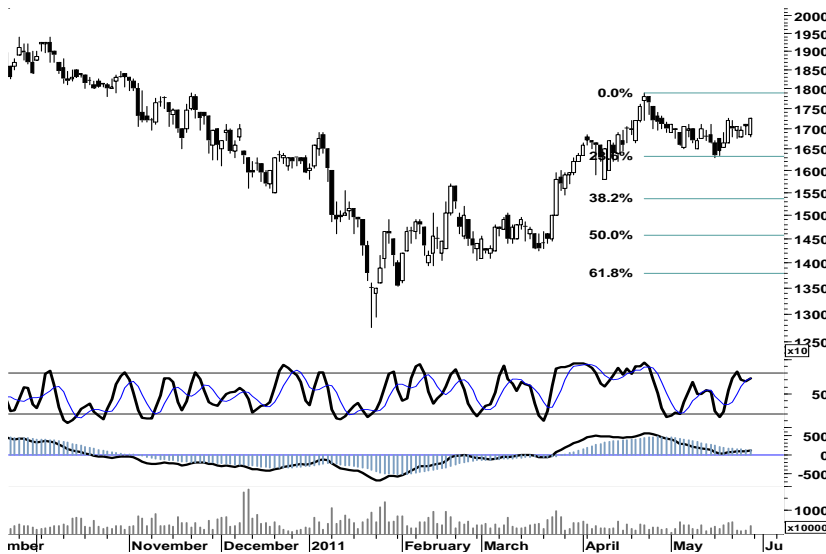
Dengan bermudakan signal positif stochastic serta basis support 1.610, BBTN diharapkan mampu bergerak dalam interval 1.620 - 1.660.

S1	S2	R1	R2
1,620	1,600	1,660	1,680

**INTP**

**17,250**

**OverBought**



Untuk dapat keluar dari area konsolidasi 16.500 - 17.250, INTP diharapkan mampu memanfaatkan momentum pada ruang overbought yang tersisa dengan melakukan penetrasi resistensi 17.250. Kami perkirakan INTP pada perdagangan hari ini akan mencoba bergerak mix-positif pada kisaran 16.950 - 17.550.

S1	S2	R1	R2
16,950	16,650	17,550	17,850

**SGRO**

**3,425**

**OverSold**



Dengan bermodalkan golden-cross pada stochastic, SGRO memiliki peluang untuk melanjutkan rally penguatannya menembus resistensi harga 3.425. SGRO memiliki peluang untuk bergerak pada kisaran 3.400 - 3.550.

S1	S2	R1	R2
3,400	3,350	3,500	3,550

**UNTR**

**22,550**

**Trading**



Dengan memperketat stop loss harga di level 21.900, UNTR masih memiliki peluang untuk bergerak melanjutkan rally penguatan menguji resistensi 22.550.

Diperkirakan UNTR pada perdagangan hari ini akan bergerak mix, dalam interval harga 22.300 - 22.850.

S1	S2	R1	R2
22,300	22,050	22,850	23,100

## TRADE DATA

### JCI (IHSG) 3,832.4 17.6 0.46%

YTD (Rp)	3.5%	Volume (m) :	3,253
YTD (USD)	8.4%	Nilai (Rpbn) :	3,464
Moving Avg 20day	3,817	Mkt Cap (Rptr) :	3,413
Moving Avg 50day	3,736	Market P/E (x) :	16.4
Moving Avg 200day	3,550	Market Div. Yield (%) :	2.4

### Indonesia & Sectors +/- (%) YTD (%)

MSCI Indonesia	4,747.3	14.7	0.31	4.42
JII	531.4	1.1	0.21	-0.27
LQ45	681.3	2.4	0.36	3.01
JAKFIN Index	499.6	2.6	0.01	7.06
JAKINFR Index	796.2	1.5	0.00	-2.80
JAKMINE Index	3,250.0	13.2	0.00	-0.74
JAKCONS Index	1,124.6	1.3	0.00	2.74
JAKTRAD Index	503.9	6.6	0.01	6.29
JAKMIND Index	1,070.4	-0.4	-0.00	10.69
JAKBIND Index	403.6	0.3	0.00	4.21
JAKPROP Index	209.2	1.7	0.01	3.03
JAKAGRI Index	2,392.1	50.6	0.02	4.72

### Commodities +/- (%) YTD (%)

CRB Index	346.27	2.9	0.86	4.05
<b>Oil &amp; Gas</b>				
Crude Oil	100.59	0.4	0.36	10.08
Natural Gas	4.52	0.2	4.44	2.57
COAL (Rotterdam)	121.15	1.1	0.92	-7.80
COAL (Amsterdam)	120.99	0.9	0.79	-3.94
COAL (Australia,wk)	117.10	0.0	0.00	-4.33
<b>Industrial Metals</b>				
Aluminium	2,613.0	66.0	2.59	6.25
Nickel	23,090	265	1.16	-6.71
Tin	27,500	600	2.23	2.23
<b>Precious Metal</b>				
Gold	1,536.30	13.5	0.89	8.08
Silver	37.86	0.5	1.43	22.49
<b>Soft Commodities</b>				
CPO (Malaysia)	3,544.00	27.0	0.77	-7.08
CPO (Netherland)	1,182.50	-2.5	-0.21	-7.98
Rubber	5,173.27	43.5	0.85	3.59
Corn	758.50	13.0	1.74	20.59
Wheat	819.75	5.3	0.64	3.21
Soybeans	1,379.75	-5.0	-0.36	-1.00
Rice (Indonesia)	6,750.00	0.0	0.00	-4.93

### Winners

Stock	Price	(%)	Stock	Price	(%)
DSSA	16,350	19.34	TPIA	4,125	-2.94
SMAR	7,950	10.42	BMTR	760	-2.56
HRUM	9,550	3.24	BBCA	7,150	-1.38
KLBF	3,425	2.24	INCO	4,850	-1.02
BMRI	7,150	2.14	ICBP	5,200	-0.95
BDMN	6,050	1.68	INDF	5,400	-0.92
UNTR	22,550	1.35	EXCL	6,350	-0.78
BBNI	3,850	1.32	BYAN	17,050	-0.58
INTP	17,250	1.17	SMGR	9,700	-0.51
ADRO	2,400	1.05	ASII	59,200	-0.17

### Losers

Stock	Price	(%)	Stock	Price	(%)
TPIA	4,125	-2.94	BMTR	760	-2.56
BMTR	760	-2.56	BBCA	7,150	-1.38
BBCA	7,150	-1.38	INCO	4,850	-1.02
INCO	4,850	-1.02	ICBP	5,200	-0.95
ICBP	5,200	-0.95	INDF	5,400	-0.92
INDF	5,400	-0.92	EXCL	6,350	-0.78
EXCL	6,350	-0.78	BYAN	17,050	-0.58
BYAN	17,050	-0.58	SMGR	9,700	-0.51
SMGR	9,700	-0.51	ASII	59,200	-0.17
ASII	59,200	-0.17			

### Regional Indices +/- (%) YTD (%)

MXWO	MSCI World	1,338.5	11.5	0.87	4.56
SPX	S&P 500	1,331.1	5.4	0.41	5.84
<b>US</b>					
Dow Jones Industrial		12,441.6	38.8	0.31	7.46
Nasdaq	US	2,796.9	13.9	0.50	5.43
<b>Europe</b>					
EURO 50	Europe	279.1	1.9	0.69	1.17
FTSE	London	5,938.9	57.9	0.98	0.66
DAX	Jerman	7,163.5	49.4	0.69	3.61
CAC	France	3,951.0	33.8	0.86	3.84
SMI	Swiss	6,489.3	20.2	0.31	0.83
<b>BRIC</b>					
BOVESPA	Brazil	64,295.0	196.4	0.31	-7.23
MICEX	Russia	1,638.1	31.8	1.98	-2.96
SENSEX	India	18,266.1	221.5	1.23	-10.94
NIFTY	India	5,476.1	63.8	1.18	-10.73
SHCOMP	China	2,709.9	-26.6	-0.97	-3.49
SZCOMP	China	1,101.1	-22.0	-1.96	-14.70

### Developed ASIA

Nikkei	Japan	9,521.9	-40.1	-0.42	-6.91
TPX	Japan	824.9	-2.2	-0.26	-8.22
HIS	Hong kong	23,118.1	217.3	0.95	0.36
KOSPI	S.Korea	2,100.2	8.3	0.40	2.40
TAIEX	Taiwan	8,810.0	21.6	0.25	-1.81
FSSTI	Singapore	3,135.5	11.8	0.38	-1.71

### ASEAN

SET	Thailand	1,067.0	1.5	0.15	3.32
PCOMP	Philippines	4,274.5	43.9	1.04	1.75
KLCI	Malaysia	1,548.7	7.8	0.50	1.96
VNINDEX	Vietnam	410.8	12.8	3.21	-15.24

### Currency +/- (%) YTD (%)

EURUSD	Euro	1.432	0.017	1.23	6.99
GBPUSD	United Kingdom	1.651	0.011	0.64	5.75
USDCHF	Switzerland	0.849	-0.016	-1.87	-9.17
USDCAD	Canada	0.976	-0.002	-0.16	-2.19
AUDUSD	Australia	1.071	0.006	0.57	4.62
NZDUSD	New Zealand	0.819	0.008	0.95	5.00
USDJPY	Japan	80.8	-0.490	-0.60	-0.39
USDCNY	China	6.492	-0.001	-0.02	-1.75
USDHKD	Hongkong	7.781	-0.003	-0.03	0.10
USDSGD	Singapore	1.236	-0.006	-0.52	-3.68
Rupiah	Indonesia	8,565.0	-17.000	-0.20	-4.79

### Value

Value	(Rpbn)	Volume	(Lot)	Freq	(x)
ASII	193,000	BNBR	654,649	BHIT	5,373
BBRI	177,010	BHIT	456,543	CLPI	2,041
BMRI	164,647	ENRG	194,411	AKRA	2,011
BUMI	164,339	LPKR	185,410	PYFA	1,866
ITMG	117,993	DEWA	166,162	ASII	1,682
TLKM	105,099	TRAM	132,602	BUVA	1,675
ADRO	102,878	ELTY	124,322	INDS	1,627
PGAS	77,627	BULL	120,183	LMPI	1,506
HRUM	76,801	BUMI	97,916	ADRO	1,486
KLBF	65,775	ASRI	97,341	BBRI	1,484

Code	Last	Ytd Chg(%)	H-5 Chg (%)	Rekomendasi	STO	RSI	MACD	Bollinger Band		Support			Resistance			H-5	
								Top	Bottom	1	2	3	1	2	3	Highest	Lowest
AALI	23,200	-13.43	-3.33	OverSold	38.3	48.4	25.8	23,500	22,700	23,050	22,900	22,800	23,300	23,400	23,550	24,150	22,400
ACES	2,700	-5.26	0.00	StrongSell	100.0	56.2	22.5	2,750	2,675	2,700	2,700	2,700	2,700	2,700	2,700	2,700	2,600
ADRO	2,400	-10.28	1.05	StrongSell	86.7	61.6	28.3	2,450	2,325	2,375	2,350	2,325	2,425	2,450	2,475	2,400	2,275
AKRA	1,760	3.53	4.14	TakeProfit	77.4	69.5	30.2	1,780	1,630	1,700	1,630	1,600	1,800	1,830	1,900	1,760	1,620
ANTM	2,150	-13.13	-2.27	Accumulate	26.7	39.8	(33.9)	2,200	2,100	2,125	2,100	2,075	2,175	2,200	2,225	2,225	2,100
ASII	59,200	8.82	-4.52	OverSold	35.1	55.6	781.3	60,000	57,750	58,350	57,500	56,650	60,050	60,900	61,750	62,150	57,300
BBCA	7,150	10.85	-2.05	Trading	47.6	47.9	(19.7)	7,300	7,050	7,100	7,050	7,000	7,200	7,250	7,300	7,400	7,000
BBNI	3,850	1.32	-2.53	OverSold	30.4	45.5	(34.0)	3,875	3,775	3,800	3,750	3,725	3,875	3,900	3,950	3,950	3,750
BBRI	6,250	20.77	-4.58	OverSold	28.0	51.9	31.4	6,350	6,150	6,200	6,150	6,100	6,300	6,350	6,400	6,550	6,100
BBTN	1,630	-2.40	-1.81	OverSold	30.8	44.6	(17.1)	1,640	1,610	1,620	1,600	1,590	1,650	1,660	1,680	1,680	1,590
BDMN	6,050	10.00	0.00	Trading	42.9	46.4	(93.1)	6,100	5,850	6,000	5,900	5,850	6,150	6,200	6,300	6,150	5,800
BISI	1,560	-16.58	-1.89	StrongBuy	16.0	39.4	(36.9)	1,570	1,540	1,540	1,520	1,500	1,580	1,600	1,620	1,620	1,530
BMRI	7,150	10.85	-1.38	OverSold	36.4	56.0	53.1	7,250	6,950	7,000	6,850	6,750	7,250	7,350	7,500	7,300	6,900
BSDE	920	4.55	2.22	OverBought	66.7	57.6	8.8	930	905	900	880	870	930	940	960	930	880
BTEL	370	57.45	-1.33	OverBought	71.4	44.3	(0.3)	378	368	365	360	355	375	380	385	375	365
BUMI	3,375	8.00	-4.26	OverSold	28.0	45.6	2.2	3,425	3,350	3,325	3,275	3,225	3,425	3,475	3,525	3,550	3,300
CTRA	420	20.00	2.44	TakeProfit	71.4	61.5	8.6	429	397	414	407	399	429	437	444	430	390
ELTY	163	1.24	-4.68	OverSold	23.5	57.4	5.8	168	159	162	160	159	165	166	168	176	159
EXCL	6,350	20.95	-2.31	OverSold	39.3	51.7	73.1	6,450	6,350	6,250	6,150	6,000	6,500	6,650	6,750	6,600	6,200
GGRM	43,750	6.58	0.11	Trading	47.3	63.2	668.8	43,850	43,400	43,450	43,150	42,950	43,950	44,150	44,450	44,300	42,850
HEXA	6,400	-11.72	-4.48	OverSold	25.0	54.5	139.3	6,550	6,300	6,350	6,300	6,200	6,500	6,600	6,650	6,800	6,300
INCO	4,850	-2.51	-1.52	Trading	47.4	49.6	(1.2)	4,925	4,800	4,825	4,775	4,750	4,900	4,925	4,975	4,950	4,775
INDF	5,400	9.09	-4.42	OverSold	34.6	45.2	(11.2)	5,500	5,300	5,350	5,300	5,250	5,450	5,500	5,550	5,700	5,250
INDY	4,300	-15.69	3.61	StrongSell	84.6	62.3	31.1	4,475	3,950	4,275	4,225	4,200	4,350	4,375	4,425	4,325	3,950
INTP	17,250	7.48	0.29	OverBought	72.2	58.3	77.3	17,300	16,900	16,950	16,650	16,500	17,400	17,550	17,850	17,250	16,650
ISAT	5,200	-4.59	-2.80	OverSold	33.3	44.3	(19.2)	5,350	5,150	5,200	5,200	5,150	5,250	5,300	5,300	5,350	5,150
ITMG	47,650	-12.25	1.28	StrongSell	81.0	52.5	(262.9)	48,050	46,150	47,100	46,550	46,200	48,000	48,350	48,900	47,800	46,000
JSMR	3,450	-2.82	0.00	OverBought	64.3	57.0	21.8	3,475	3,425	3,425	3,375	3,350	3,500	3,525	3,575	3,500	3,375
KLBF	3,425	3.01	-2.14	Trading	50.0	49.1	(27.0)	3,450	3,325	3,375	3,325	3,275	3,475	3,525	3,575	3,525	3,225
LSIP	2,425	-4.53	1.04	StrongSell	81.3	53.8	1.4	2,475	2,350	2,400	2,375	2,350	2,450	2,475	2,500	2,450	2,300
MYOR	12,700	17.59	6.28	StrongSell	87.5	73.6	297.7	13,200	11,750	12,650	12,550	12,450	12,850	12,950	13,050	12,850	11,700
PGAS	4,050	-9.50	1.25	StrongSell	93.8	53.4	3.1	4,125	3,925	4,025	4,000	3,975	4,075	4,100	4,125	4,050	3,900
PTBA	21,600	-9.81	2.61	StrongSell	91.5	51.8	(164.1)	22,000	20,900	21,450	21,300	21,200	21,700	21,800	21,950	21,650	20,750
RALS	790	-8.14	3.95	Trading Sell	84.6	60.1	1.9	805	745	20,870	20,870	20,870	20,870	20,870	20,870	790	740
SGRO	3,425	5.38	-1.44	OverSold	25.0	55.4	36.6	3,475	3,375	3,400	3,350	3,325	3,475	3,500	3,550	3,500	3,375
SMCB	2,175	-2.25	0.00	OverBought	62.5	53.9	(4.7)	2,225	2,050	2,125	2,075	2,025	2,225	2,275	2,325	2,200	2,050
SMGR	9,700	-1.52	-0.51	OverBought	73.7	59.1	67.0	9,800	9,650	9,550	9,400	9,250	9,850	10,000	10,150	9,800	9,500
SMRA	1,130	4.63	0.89	Trading	57.1	50.3	(13.6)	1,140	1,080	1,100	1,060	1,040	1,160	1,180	1,220	1,140	1,080
TINS	2,600	-8.77	-3.70	Accumulate	26.7	38.3	(41.5)	2,650	2,600	2,575	2,550	2,525	2,625	2,650	2,675	2,700	2,575
TLKM	7,700	-3.75	0.65	StrongSell	92.3	56.8	61.4	7,800	7,600	7,650	7,600	7,550	7,750	7,800	7,850	7,700	7,500
UNTR	22,550	-7.20	1.35	Trading	59.5	53.4	37.7	22,700	21,900	22,300	22,050	21,900	22,700	22,850	23,100	22,550	21,850
UNVR	14,850	-7.48	-1.00	Accumulate	22.7	36.0	(118.6)	14,900	14,800	14,750	14,650	14,550	14,950	15,050	15,150	15,150	14,750

S1 = Support 1      S2 = Support 2      S3 = Support 3  
 R1 = Resisten 1      R2 = Resisten 2      R2 = Resisten 2  
 STO = Stochastic Oscillator  
 RSI = Relative Strength Index  
 MACD = Moving Average Convergence Divergence  
 H-5 = 5 hari sebelumnya

## RESEARCH TEAM

---

<b>Andrian Tanuwijaya</b>	Equity Analyst	(andrian.tanuwijaya@trimegah.com)
<b>Hanel Topada Era Tania</b>	Equity Analyst	(hanel.tania@trimegah.com)
<b>T Heldy Arifien</b>	Technical Analyst	(heldy@trimegah.com)
<b>Rovandi</b>	Research Assistant	(rovandi@trimegah.com)

## EQUITY CAPITAL MARKET TEAM

---

<b>Nathanael Benny Prasetyo</b>	Head of Retail ECM	(benny.prasetyo@trimegah.com)
<b>Windra Djulnaily</b>	Pluit, Jakarta	(windra.djulnaily@trimegah.com)
<b>Ariawan Anwar</b>	Artha Graha, Jakarta	(ariawan.anwar@trimegah.com)
<b>Ferry Zabur</b>	Kelapa Gading, Jakarta	(ferry.zabur@trimegah.com)
<b>Wirjawan Joesoef</b>	Mangga Dua, Jakarta	(iwan@trimegah.com)
<b>Lukman Abdul Azis</b>	Kebon Jeruk, Jakarta	(lukman@trimegah.com)
<b>Tutik Suciati</b>	Semarang, Jawa Tengah	(tuty.s@trimegah.com)
<b>Sonny Muljadi</b>	Surabaya, Jawa Timur	(sonny.muljadi@trimegah.com)
<b>Ni Luh Ketut Sri Agustini</b>	Denpasar, Bali	(sri.agustini@trimegah.com)
<b>Philip Fernando Suwandi</b>	Makassar, Sulawesi Selatan	(philip.fs@trimegah.com)
<b>agus.jatmiko</b>	Balikpapan, Kalimantan Timur	(agus.jatmiko@trimegah.com)
<b>Asep Saepudin</b>	Bandung, Jawa Barat	(asep.saepudin@trimegah.com)
<b>Asep Saepudin</b>	Cirebon, Jawa Barat	(asep.saepudin@trimegah.com)
<b>Very Wijaya</b>	Medan, Sumatera Utara	(very.wijaya@trimegah.com)
<b>Tantie Rivi Watie</b>	Pekanbaru, Riau	(tantierw@trimegah.com)
<b>Agus Bambang Suseno</b>	Solo, Jawa Tengah	(agus.suseno@trimegah.com)
<b>Agus Bambang Suseno</b>	Yogyakarta, Jawa Tengah	(agus.suseno@trimegah.com)
<b>Donny Kristanto Setiadi</b>	Palembang, Sumatra Selatan	(donny.kristanto@trimegah.com)
<b>Sonny Muljadi</b>	Malang, Jawa Timur	(sonny.muljadi@trimegah.com)

**PT Trimegah Securities Tbk**  
18<sup>th</sup> Fl, Artha Graha Building  
Jl. Jend. Sudirman Kav. 52-53  
Jakarta 12190, INDONESIA  
Tel : (6221) 2924 9088 Fax : (6221) 2924 9163

### DISCLAIMER

This report has been prepared by PT Trimegah Securities Tbk on behalf of itself and its affiliated companies and is provided for information purposes only. Under no circumstances is it to be used or considered as an offer to sell, or a solicitation of any offer to buy. This report has been produced independently and the forecasts, opinions and expectations contained herein are entirely those of Trimegah Securities.

While all reasonable care has been taken to ensure that information contained herein is not untrue or misleading at the time of publication, Trimegah Securities makes no representation as to its accuracy or completeness and it should not be relied upon as such. This report is provided solely for the information of clients of Trimegah Securities who are expected to make their own investment decisions without reliance on this report. Neither Trimegah Securities nor any officer or employee of Trimegah Securities accept any liability whatsoever for any direct or consequential loss arising from any use of this report or its contents. Trimegah Securities and/or persons connected with it may have acted upon or used the information herein contained, or the research or analysis on which it is based, before publication. Trimegah Securities may in future participate in an offering of the company's equity securities.