

IHSG

3.838,1

37,6

0,99%

Ulasan Pasar



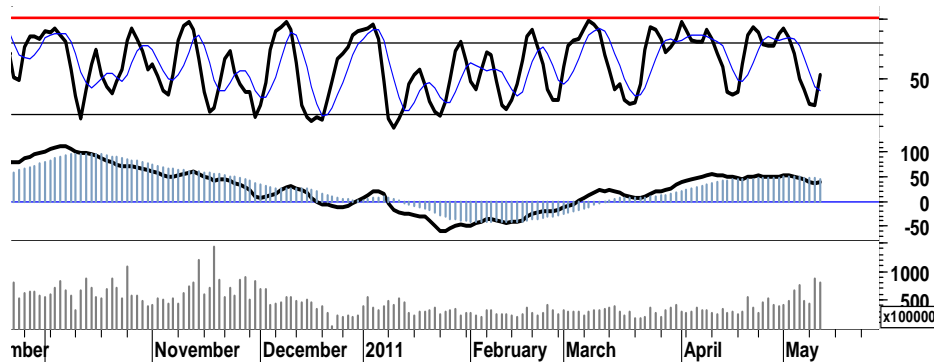
Bargain hunting terhadap sejumlah saham unggulan serta saham favorit pada perdagangan kemarin, berhasil mendorong penguatan IHSG sehingga membukukan kenaikan sebesar 0,99% ditutup pada level 3.838. Berlanjutnya rally penguatan yang juga di ikuti oleh peningkatan harga hampir 90% emiten yang tercatat dalam BEI, dan hanya 13%-14% yang mengalami tekanan pelemahan serta aksi profit taking.

Golden cross yang terbentuk pada stochastic setelah berhasil rebound dari basis support 28, merupakan indikasi yang serta merta memberikan signal positif bahwa animo para pelaku pasar masih cukup tinggi. Dimana investor asing pun kembali mencatatkan nilai pembelian bersih, sebesar Rp355miliar.

Bergerak menjauh dari area oversold stochastic serta berhasil menembus retracement rasio 62% di level 3.820, merupakan signal positif yang sekaligus membuka peluang

bagi IHSG untuk selanjutnya menguji resistensi di level 3.850.

Secara umum IHSG berada dalam kondisi bullish, dan berpeluang untuk bergerak dalam interval harga 3.815 - 3.855.



S1	S2	R1	R2
3,815	3,790	3,850	3,865

Saham Pilihan

Saham	Harga (Rp)	Rekomendasi	Stochastic	RSI	BB Top	BB Bottom	S1	S2	R1	R2
AKRA	1,610	StrongBuy	13.04	50.34	1,670	1,570	1,600	1,590	1,630	1,640
ANTM	2,250	Trading	50.00	47.12	2,275	2,200	2,200	2,150	2,300	2,350
PTBA	21,800	OverSold	23.53	46.89	22,100	21,600	21,700	21,600	22,200	22,300
SMCB	2,175	OverSold	27.27	54.01	2,225	2,150	2,150	2,125	2,225	2,250
SMGR	9,350	OverSold	36.84	47.61	9,500	9,250	9,300	9,250	9,550	9,600
UNVR	15,000	Accumulate	27.27	37.17	15,050	14,900	14,950	14,900	15,200	15,250



Ditutup dalam kisaran pivot support 1.610, mengakibatkan AKRA berada pada kondisi berimbang antara kekuatan beli dan tekanan jual.

Golden cross pada stochastic oscillator diharapkan dapat menjadi sentimen positif yang mendorong AKRA menguji penetrasi 1.610.

S1	S2	R1	R2
1,600	1,590	1,630	1,640



Beranjak menjauhi area oversold serta berhasil menembus resistensi 2.200, membuka peluang bagi ANTM menguji kekuatan resisten harga di level 2.300.

S1	S2	R1	R2
2,200	2,150	2,300	2,350



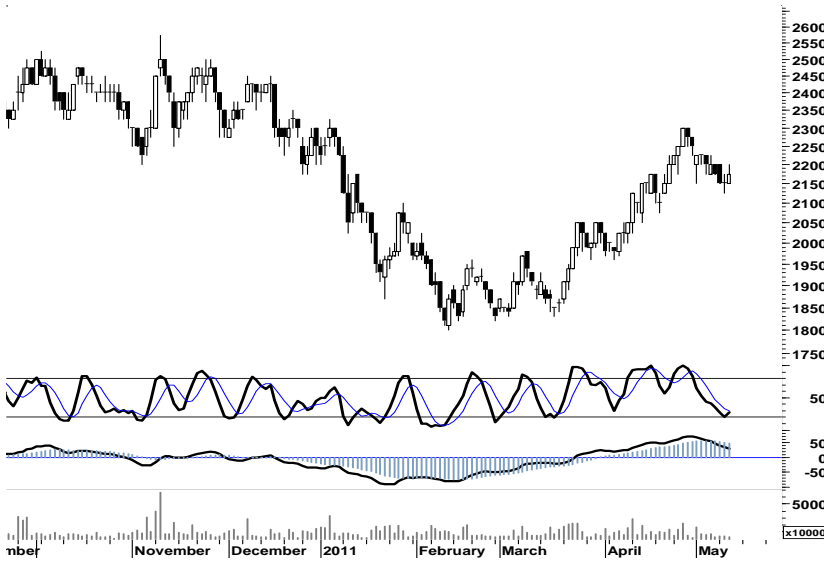
Keluar dari zona merah serta indikasi golden cross pada stochastic, diharapkan mampu mendorong PTBA untuk bergerak menguji 22.200.

S1	S2	R1	R2
21,700	21,600	22,200	22,300

SMCB

2,175

OverSold



Ditutup dalam kondisi berimbang dari pivot support 2.175 serta indikasi signal positif, memberikan peluang bagi SMCB untuk menguji penembusan resisten 2.225.

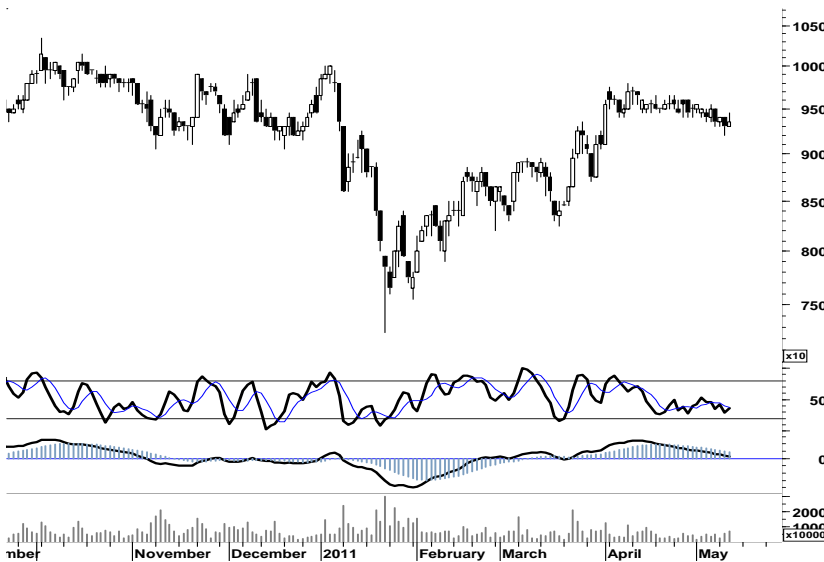
Waspadaai stop-loss harian di level 2.075, dan manfaatkan momentum gerak menuju resistensi target terdekat di level 2.225.

S1	S2	R1	R2
2,150	2,125	2,225	2,250

SMGR

9,350

OverSold



Untuk dapat keluar dari area konsolidasi, SMGR harus mampu bergerak serta menembus resistensi target terdekat di level 9.600`

S1	S2	R1	R2
9,300	9,250	9,550	9,600

UNVR

15,000

Accumulate



Perlu di ingat bahwa UNVR sekalipun masih harus bertahan dalam area konsolidasi 14.900 - 15.350, diharapkan signal positif stochastic dapat memberikan peluang untuk bergerak dalam interval harga 14.950 - 15.200.

S1	S2	R1	R2
14,950	14,900	15,200	15,250

TRADE DATA

JCI (IHSG) 3,838.1 37.6 0.99%

YTD (Rp)	3.6%	Volume (m) :	7,630
YTD (USD)	9.1%	Nilai (Rpbn) :	5,018
Moving Avg 20day	3,787	Mkt Cap (Rpbn) :	3,414
Moving Avg 50day	3,677	Market P/E (x) :	16.4
Moving Avg 200day	3,507	Market Div. Yield (%) :	2.4

Indonesia & Sectors +/- (%) YTD (%)

MSCI Indonesia	4,792.6	62.4	1.32	5.41
JII	533.1	8.8	1.67	0.04
LQ45	686.4	9.3	1.37	3.79
JAKFIN Index	503.0	4.9	0.01	7.77
JAKINFR Index	797.5	3.1	0.00	-2.65
JAKMINE Index	3,306.9	23.5	0.01	1.00
JAKCONS Index	1,118.5	8.2	0.01	2.18
JAKTRAD Index	504.3	0.7	0.00	6.38
JAKMIND Index	1,067.4	38.4	0.04	10.38
JAKBIND Index	399.5	2.8	0.01	3.17
JAKPROP Index	210.0	2.1	0.01	3.41
JAKAGRI Index	2,272.1	31.7	0.01	-0.54

Commodities +/- (%) YTD (%)

CRB Index	338.10	-10.5	-3.00	1.59
Oil & Gas				
Crude Oil	98.21	-5.7	-5.46	7.47
Natural Gas	4.18	-0.1	-1.53	-5.09
COAL (Rotterdam)	122.90	-0.6	-0.53	-6.47
COAL (Amsterdam)	123.25	0.0	0.00	-2.14
COAL (Australia,wk)	120.85	0.0	0.00	-1.27
Industrial Metals				
Aluminium	2,596.8	-39.3	-1.49	5.59
Nickel	24,550	-300	-1.21	-0.81
Tin	29,125	-475	-1.60	8.27
Precious Metal				
Gold	1,501.40	-15.5	-1.02	5.63
Silver	35.52	-3.0	-7.72	14.90
Soft Commodities				
CPO (Malaysia)	3,370.00	10.0	0.30	-11.64
CPO (Netherlands)	1,137.50	2.5	0.22	-11.48
Rubber	5,132.63	100.5	2.00	2.78
Corn	677.25	-30.0	-4.24	7.67
Wheat	759.00	-39.8	-4.98	-4.44
Soybeans	1,331.75	-6.3	-0.47	-4.45
Rice (Indonesia)	6,600.00	0.0	0.00	-7.04

Winners

Losers

Stock	Price	(%)	Stock	Price	(%)
GJTL	2,675	9.18	SONA	3,375	-12.34
ASII	59,250	4.04	DUTI	1,900	-10.59
BBRI	6,300	2.44	DSSA	21,800	-6.03
UNTR	22,900	2.00	EMTK	1,600	-5.88
INTP	17,000	1.80	BRPT	1,070	-4.46
BMRI	7,150	1.42	TOWR	10,200	-2.86
ADRO	2,325	1.09	SMMA	2,500	-1.96
BBCA	7,350	0.68	KRAS	1,130	-0.88
UNVR	15,000	0.67	EXCL	6,300	-0.79
TLKM	7,600	0.66	BUMI	3,600	-0.69

Regional Indices +/- (%) YTD (%)

MXWO	MSCI Word	1,357.4	-9.0	-0.66	6.04
SPX	S&P 500	1,342.1	-15.1	-1.11	6.71
US					
Dow Jones Industrial		12,630.0	-130.3	-1.02	9.09
Nasdaq	US	2,845.1	-26.8	-0.93	7.24
Europe					
EURO 50	Europe	283.7	0.8	0.29	2.87
FTSE	London	5,976.0	-42.9	-0.71	1.29
DAX	German	7,495.1	-6.5	-0.09	8.40
CAC	France	4,058.1	5.6	0.14	6.66
SMI	Swiss	6,562.8	36.7	0.56	1.97
BRIC					
BOVESPA	Brazil	63,775.8	-1,101.1	-1.70	-7.98
MICEX	Russia	1,654.8	-23.4	-1.39	-1.97
SENSEX	India	18,585.0	72.2	0.39	-9.38
NIFTY	India	5,565.1	23.8	0.43	-9.28
SHCOMP	China	2,883.4	-7.2	-0.25	2.68
SZCOMP	China	1,212.3	2.0	0.17	-6.09

Developed ASIA

Nikkei	Japan	9,864.3	45.5	0.46	-3.56
TPX	Japan	857.6	1.2	0.14	-4.58
HIS	Hong kong	23,291.8	-44.2	-0.19	1.11
KOSPI	S. Korea	2,166.6	27.5	1.28	5.64
TAIEX	Taiwan	9,020.4	-2.9	-0.03	0.53
FSSTI	Singapore	3,177.2	20.9	0.66	-0.40

ASEAN

SET	Thailand	1,100.5	14.9	1.37	6.56
PCOMP	Philippines	4,335.0	31.9	0.74	3.19
KLCI	Malaysia	1,536.0	12.7	0.83	1.13
VNINDEX	Vietnam	483.2	1.9	0.39	-0.31

Currency +/- (%) YTD (%)

EURUSD	Euro	1.419	-0.022	-1.51	6.04
GBPUSD	United Kingdom	1.635	-0.002	-0.12	4.70
USDCHF	Switzerland	0.888	0.008	0.90	-5.08
USDCAD	Canada	0.962	0.005	0.53	-3.62
AUDUSD	Australia	1.070	-0.014	-1.26	4.56
NZDUSD	New Zealand	0.789	-0.006	-0.78	1.13
USDJPY	Japan	81.1	0.170	0.21	-0.09
USDCNY	China	6.493	0.001	0.02	-1.73
USDHKD	Hongkong	7.772	0.000	0.01	-0.01
USDSGD	Singapore	1.237	0.005	0.41	-3.65
Rupiah	Indonesia	8,531.0	-22.000	-0.26	-5.17

Value (Rpbn) Volume (Lot) Freq (x)

ASII	522,378	BNBR	2,767,852	ASBI	6,868
BMRI	241,086	ENRG	1,710,593	BNBR	4,020
BUMI	227,809	ELTY	1,173,870	ENRG	4,018
BBRI	199,929	DEWA	902,298	ASII	3,350
ENRG	157,027	TRUB	763,039	BBRI	3,147
BBNI	121,627	ASRI	572,059	ELTY	3,116
ADRO	114,076	SIPD	435,923	DEWA	2,755
BNBR	110,526	BRAU	365,062	BJBR	2,589
BRAU	100,432	BKSL	232,549	BUMI	2,235
PGAS	99,680	KIJA	210,142	TRUB	2,150

Code	Last	Ytd Chg(%)	H-5 Chg (%)	Rekomendasi	STO	RSI	MACD	Bollinger Band		Support			Resistance			H-5	
								Top	Bottom	1	2	3	1	2	3	Highest	Lowest
AALI	24,050	-10.26	1.05	TakeProfit	65.4	63.3	286.5	24,250	23,400	23,950	23,800	23,750	24,150	24,200	24,350	24,200	23,300
ACES	2,675	-6.14	0.94	TakeProfit	60.0	60.9	21.9	2,700	2,625	2,675	2,650	2,650	2,700	2,700	2,725	2,700	2,600
ADRO	2,325	-13.08	3.33	OverBought	61.1	56.7	5.3	2,350	2,300	2,325	2,300	2,300	2,350	2,350	2,375	2,375	2,225
AKRA	1,610	-5.29	-4.17	StrongBuy	13.0	50.3	25.8	1,670	1,570	1,600	1,590	1,580	1,620	1,630	1,640	1,680	1,590
ANTM	2,250	-9.09	1.12	Trading	50.0	47.1	(17.7)	2,275	2,200	2,200	2,150	2,125	2,275	2,300	2,350	2,250	2,175
ASII	59,250	8.92	5.05	StrongSell	87.6	65.9	381.9	59,750	55,300	57,750	56,250	55,500	60,000	60,750	62,250	59,250	55,800
BBCA	7,350	13.95	0.00	OverBought	66.7	53.3	55.6	7,450	7,150	7,250	7,150	7,100	7,400	7,450	7,550	7,350	7,050
BBNI	3,950	3.95	0.00	Trading	55.6	48.7	6.8	4,000	3,875	3,925	3,875	3,850	4,000	4,025	4,075	3,975	3,850
BBRI	6,300	21.74	-1.56	Trading	42.3	55.6	106.6	6,400	6,050	6,200	6,100	6,050	6,350	6,400	6,500	6,450	6,000
BBTN	1,710	2.40	4.91	StrongSell	86.7	55.7	5.0	1,740	1,640	1,700	1,680	1,670	1,730	1,740	1,760	1,720	1,600
BDMN	6,050	10.00	-2.42	Accumulate	21.4	36.9	(106.3)	6,200	5,950	6,000	5,950	5,900	6,100	6,150	6,200	6,200	5,950
BISI	1,660	-11.23	4.40	OverBought	75.6	51.1	(12.0)	1,730	1,540	1,650	1,640	1,620	1,680	1,700	1,710	1,690	1,540
BMRI	7,150	10.85	-0.69	Trading	46.2	56.7	116.0	7,300	6,850	7,100	7,050	7,000	7,200	7,250	7,300	7,250	6,800
BSDE	930	5.68	3.33	StrongSell	89.5	61.0	18.6	950	880	910	890	880	940	950	970	930	860
BTEL	380	61.70	0.00	StrongSell	83.3	56.7	6.9	388	378	375	370	365	385	390	395	385	375
BUMI	3,600	15.20	0.70	TakeProfit	72.0	67.1	94.5	3,675	3,550	3,575	3,525	3,500	3,650	3,675	3,725	3,650	3,425
CTRA	410	17.14	7.89	StrongSell	88.2	63.5	4.4	418	360	390	370	360	420	430	450	410	365
ELTY	156	-3.11	7.59	TakeProfit	77.1	72.9	2.9	159	146	154	151	149	159	161	164	158	142
EXCL	6,300	20.00	-0.79	OverSold	31.0	53.9	138.4	6,400	6,250	6,250	6,200	6,150	6,350	6,400	6,450	6,600	6,150
GGRM	41,350	0.73	1.10	OverBought	70.2	56.7	0.7	41,500	40,650	41,150	40,950	40,800	41,500	41,650	41,850	41,400	40,500
HEXA	6,450	-11.03	10.26	StrongSell	87.5	64.1	61.9	6,550	6,150	6,400	6,350	6,250	6,550	6,650	6,700	6,550	5,550
INCO	4,925	-1.01	0.51	Trading	55.0	53.2	12.2	4,975	4,800	4,875	4,825	4,800	4,950	4,975	5,025	4,950	4,775
INDF	5,650	14.14	1.80	Trading	50.0	62.0	90.2	5,750	5,550	5,600	5,550	5,450	5,750	5,850	5,900	5,750	5,450
INDY	4,125	-19.12	2.48	Trading	55.6	57.2	33.8	4,200	4,100	4,125	4,100	4,100	4,150	4,150	4,175	4,225	4,000
INTP	17,000	5.92	2.41	Trading	50.0	55.7	176.7	17,200	16,600	16,800	16,600	16,450	17,150	17,300	17,500	17,100	16,500
ISAT	5,300	-2.75	-1.85	OverSold	25.0	48.3	13.6	5,450	5,250	5,250	5,150	5,100	5,400	5,450	5,550	5,450	5,200
ITMG	47,500	-12.52	0.96	Trading	47.8	52.3	(36.8)	47,850	47,000	47,300	47,100	46,950	47,650	47,800	48,000	48,000	46,850
JSMR	3,475	-2.11	2.21	StrongSell	85.7	66.0	24.2	3,500	3,425	3,425	3,375	3,350	3,500	3,525	3,575	3,475	3,350
KLBF	3,475	4.51	-1.42	Trading	44.8	48.2	21.7	3,575	3,400	3,425	3,375	3,325	3,525	3,575	3,625	3,600	3,350
LSIP	2,450	-3.54	-1.01	OverSold	28.6	54.8	21.9	2,500	2,375	2,425	2,400	2,375	2,475	2,500	2,525	2,500	2,375
MYOR	11,550	6.94	-1.70	OverSold	33.3	56.7	188.6	11,700	11,350	11,500	11,450	11,400	11,600	11,650	11,700	11,900	11,300
PGAS	4,175	-6.70	0.60	Trading	50.0	63.0	80.5	4,275	4,125	4,150	4,100	4,075	4,225	4,250	4,300	4,250	4,100
PTBA	21,800	-8.98	-2.46	OverSold	23.5	46.9	61.3	22,100	21,600	21,700	21,600	21,400	22,000	22,200	22,300	22,450	21,600
RALS	720	-16.28	-1.37	OverBought	60.0	35.3	(17.1)	745	715	715	710	695	735	750	755	740	710
SGRO	3,475	6.92	0.72	OverSold	28.0	62.1	87.5	3,550	3,325	3,425	3,350	3,325	3,525	3,550	3,625	3,550	3,350
SMCB	2,175	-2.25	-1.14	OverSold	27.3	54.0	30.9	2,225	2,150	2,150	2,125	2,100	2,200	2,225	2,250	2,225	2,125
SMGR	9,350	-5.08	-0.53	OverSold	36.8	47.6	20.2	9,500	9,250	9,300	9,250	9,150	9,450	9,550	9,600	9,550	9,200
SMRA	1,110	2.78	-8.26	StrongBuy	8.1	40.9	7.0	1,200	1,060	1,100	1,090	1,070	1,130	1,150	1,160	1,230	1,100
TINS	2,750	-3.51	-2.65	OverSold	21.4	46.0	1.3	2,825	2,675	2,725	2,675	2,650	2,800	2,825	2,875	2,825	2,700
TLKM	7,600	-5.00	-0.65	Trading	55.6	54.0	80.5	7,650	7,550	7,550	7,500	7,450	7,650	7,700	7,750	7,700	7,400
UNTR	22,900	-5.76	-1.98	OverSold	27.0	57.1	261.6	23,450	22,050	22,550	22,200	21,950	23,150	23,400	23,750	23,603	22,200
UNVR	15,000	-6.54	0.00	Accumulate	27.3	37.2	(155.7)	15,050	14,900	14,950	14,900	14,800	15,100	15,200	15,250	15,200	14,850

S1 = Support 1 S2 = Support 2 S3 = Support 3
 R1 = Resisten 1 R2 = Resisten 2 R2 = Resisten 2
 STO = Stochastic Oscillator
 RSI = Relative Strength Index
 MACD = Moving Average Convergence Divergence
 H-5 = 5 hari sebelumnya

RESEARCH TEAM

Andrian Tanuwijaya	Equity Analyst	(andrian.tanuwijaya@trimegah.com)
Hanel Topada Era Tania	Equity Analyst	(hanel.tania@trimegah.com)
T Heldy Arifien	Technical Analyst	(heldy@trimegah.com)
Rovandi	Research Assistant	(rovandi@trimegah.com)

EQUITY CAPITAL MARKET TEAM

Nathanael Benny Prasetyo	Head of Retail ECM	(benny.prasetyo@trimegah.com)
Windra Djulnaily	Pluit, Jakarta	(windra.djulnaily@trimegah.com)
Ariawan Anwar	Artha Graha, Jakarta	(ariawan.anwar@trimegah.com)
Ferry Zabur	Kelapa Gading, Jakarta	(ferry.zabur@trimegah.com)
Wirjawan Joesoef	Mangga Dua, Jakarta	(iwan@trimegah.com)
Lukman Abdul Azis	Kebon Jeruk, Jakarta	(lukman@trimegah.com)
Tutik Suciati	Semarang, Jawa Tengah	(tuty.s@trimegah.com)
Sonny Muljadi	Surabaya, Jawa Timur	(sonny.muljadi@trimegah.com)
Ni Luh Ketut Sri Agustini	Denpasar, Bali	(sri.agustini@trimegah.com)
Philip Fernando Suwandi	Makassar, Sulawesi Selatan	(philip.fs@trimegah.com)
agus.jatmiko	Balikpapan, Kalimantan Timur	(agus.jatmiko@trimegah.com)
Asep Saepudin	Bandung, Jawa Barat	(asep.saepudin@trimegah.com)
Asep Saepudin	Cirebon, Jawa Barat	(asep.saepudin@trimegah.com)
Very Wijaya	Medan, Sumatera Utara	(very.wijaya@trimegah.com)
Tantie Rivi Watie	Pekanbaru, Riau	(tantierw@trimegah.com)
Agus Bambang Suseno	Solo, Jawa Tengah	(agus.suseno@trimegah.com)
Agus Bambang Suseno	Yogyakarta, Jawa Tengah	(agus.suseno@trimegah.com)
Donny Kristanto Setiadi	Palembang, Sumatra Selatan	(donny.kristanto@trimegah.com)
Sonny Muljadi	Malang, Jawa Timur	(sonny.muljadi@trimegah.com)

PT Trimegah Securities Tbk
18th Fl, Artha Graha Building
Jl. Jend. Sudirman Kav. 52-53
Jakarta 12190, INDONESIA
Tel : (6221) 2924 9088 Fax : (6221) 2924 9163

DISCLAIMER

This report has been prepared by PT Trimegah Securities Tbk on behalf of itself and its affiliated companies and is provided for information purposes only. Under no circumstances is it to be used or considered as an offer to sell, or a solicitation of any offer to buy. This report has been produced independently and the forecasts, opinions and expectations contained herein are entirely those of Trimegah Securities.

While all reasonable care has been taken to ensure that information contained herein is not untrue or misleading at the time of publication, Trimegah Securities makes no representation as to its accuracy or completeness and it should not be relied upon as such. This report is provided solely for the information of clients of Trimegah Securities who are expected to make their own investment decisions without reliance on this report. Neither Trimegah Securities nor any officer or employee of Trimegah Securities accept any liability whatsoever for any direct or consequential loss arising from any use of this report or its contents. Trimegah Securities and/or persons connected with it may have acted upon or used the information herein contained, or the research or analysis on which it is based, before publication. Trimegah Securities may in future participate in an offering of the company's equity securities.