

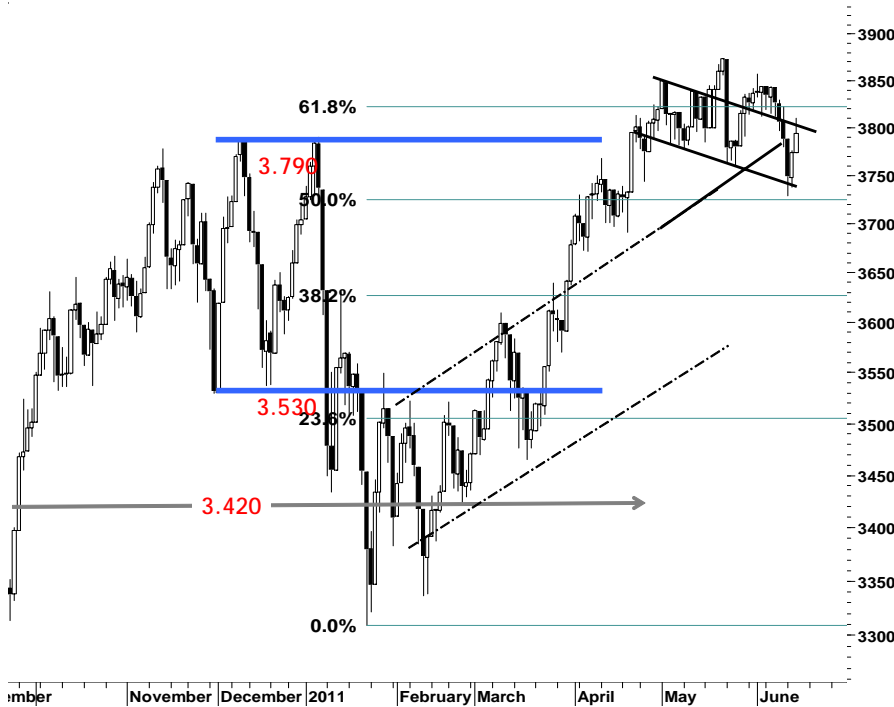
IHSG

3.794,3

21,0

0,56%

Ulisan Pasar



Minimnya sentimen yang disertai kondusifnya pergerakan Dow Jones kemarin, IHSG mencoba untuk kembali menggapai zona positif dengan melakukan penetrasi resisten harga 3.790. Namun aksi profit taking kembali membayangi bargain hunting sejumlah saham yang awalnya berhasil mendorong IHSG melakukan swing positif 0,97% mendekati resistensi harga 3.810, mengakibatkan IHSG gagal bertahan pada area 3.800-nya dan ditutup dengan hanya membukukan nilai positif 21 poin di level harga 3.794.

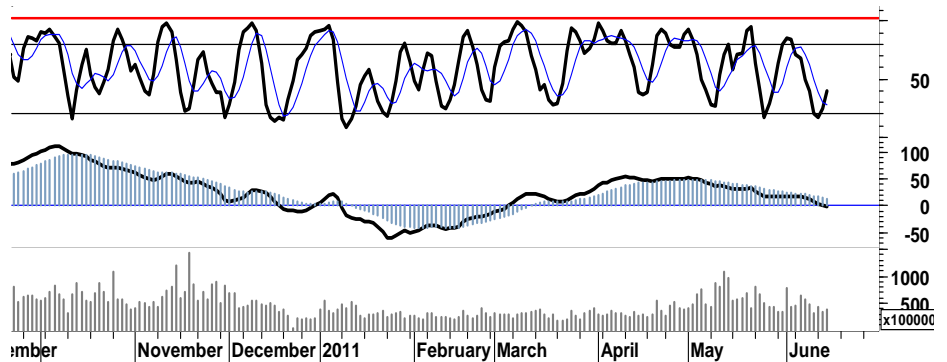
Aksi beli sejumlah saham unggulan yang terkelompokkan dalam sektor perbankan berusaha menahan laju aksi jual yang di alami oleh saham-saham dalam sektor pertambangan untuk bertumpu pada support harga 3.790.

Pertumbuhan rasio volume perdagangan yang hanya mencapai 0,5% serta konfirmasi golden-cross kemarin, diharapkan mampu menahan potensi berlanjutnya tekanan pelemahan yang

diperkirakan masih akan membayangi pergerakan IHSG hari ini. Sebagaimana tercermin dalam arus distribusi MACD, yang cenderung mencoba untuk keluar dari zona hijau, memasuki area negatif.

Dengan memperketat stop-loss harga dilevel 3.750, kami perkirakan IHSG pada perdagangan hari ini, akan mencoba bergerak dalam interval harga 3.760-3.830.

| S1 | S2 | R1 | R2 |
|-------|-------|-------|-------|
| 3,775 | 3,760 | 3,810 | 3,830 |



Saham Pilihan

| Saham | Harga (Rp) | Rekomendasi | Stochastic | RSI | BB Top | BB Bottom | S1 | S2 | R1 | R2 |
|-------|------------|-------------|------------|-------|--------|-----------|--------|--------|--------|--------|
| ASII | 59,000 | Trading | 46.67 | 53.19 | 59,800 | 55,900 | 58,150 | 57,300 | 60,000 | 60,850 |
| BBRI | 6,400 | Trading | 58.82 | 54.19 | 6,450 | 6,250 | 6,350 | 6,300 | 6,500 | 6,550 |
| BTEL | 360 | OverBought | 71.43 | 44.51 | 365 | 344 | 354 | 347 | 367 | 374 |
| EXCL | 6,200 | StrongSell | 84.00 | 54.84 | 6,350 | 5,750 | 6,050 | 5,900 | 6,500 | 6,650 |
| JSMR | 3,450 | OverBought | 60.00 | 54.43 | 3,525 | 3,300 | 3,425 | 3,400 | 3,500 | 3,525 |
| TLKM | 7,250 | Accumulate | 33.33 | 35.03 | 7,550 | 7,200 | 7,200 | 7,150 | 7,350 | 7,400 |



Dengan mencermati support celah harga 57.350 yang terbentuk, serta memperketat stop-loss harga pada retracement 162% di level 57.150. Signal golden cross stochastic, diharapkan mampu menahan laju tekanan yang mungkin akan terjadi serta mendorong ASII menguji resistensi harga 60.000.

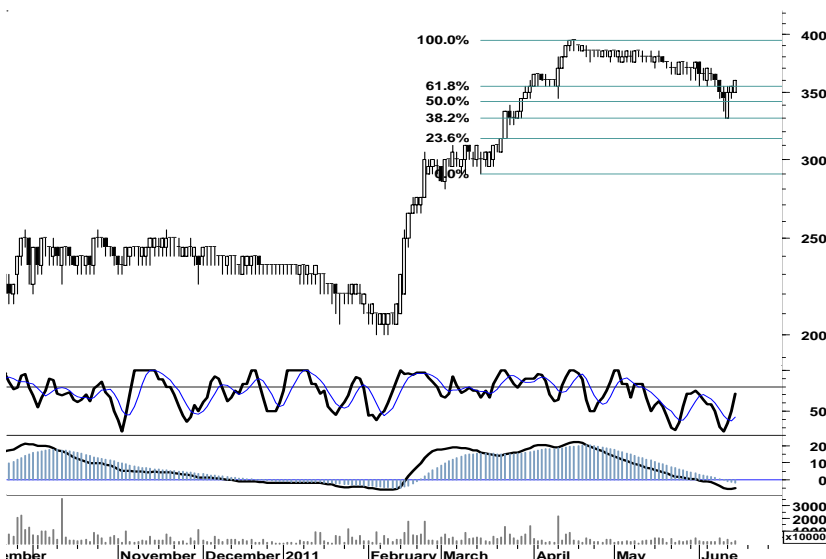
| S1 | S2 | R1 | R2 |
|--------|--------|--------|--------|
| 58,150 | 57,300 | 60,000 | 60,850 |



Peningkatan rasio volume perdagangan selama 3 hari berturut-turut, diharapkan mampu menjadi salah satu katalis positif yang akan mendorong BBRI menguji resistensi harga terdekat di level 6.500.

BBRI pada perdagangan hari ini, kami perkirakan akan bergerak moderat dalam interval 6.350-6.550.

| S1 | S2 | R1 | R2 |
|-------|-------|-------|-------|
| 6,350 | 6,300 | 6,500 | 6,550 |



Ditutup dalam area pivot support 355-360, BTEL memiliki ruang untuk bergerak menguji resistensi 370 dengan memperketat stoploss harga di level 345.

| S1 | S2 | R1 | R2 |
|-----|-----|-----|-----|
| 354 | 347 | 367 | 374 |

EXCL

6,200

StrongSell



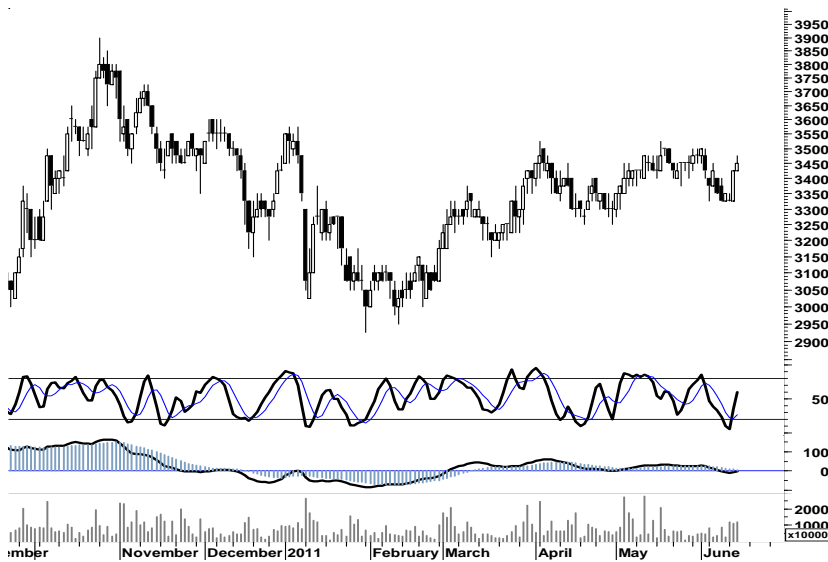
Dengan merujuk pada beberapa signal positif leading indicator,

| S1 | S2 | R1 | R2 |
|-------|-------|-------|-------|
| 6,050 | 5,900 | 6,500 | 6,650 |

JSMR

3,450

OverBought



Indikasi signal positif fast-moving oscillator serta ruang untuk berlanjutnya penguatan JSMR, diharapkan mampu menahan laju tekanan dengan bertumpu pada support pivot 3.450. JSMR berpeluang untuk bergerak positif, dalam rentang harga 3400-3525.

| S1 | S2 | R1 | R2 |
|-------|-------|-------|-------|
| 3,425 | 3,400 | 3,500 | 3,525 |

TLKM

7,250

Accumulate



Tekanan pelemahan yang mengakibatkan munculnya celah harga 7.400 untuk selanjutnya sebagai target resistensi terdekat, apabila TLKM berhasil melakukan pentrasi 7.300.

| S1 | S2 | R1 | R2 |
|-------|-------|-------|-------|
| 7,200 | 7,150 | 7,350 | 7,400 |

TRADE DATA

JCI (IHSG) 3,794.3 21.0 0.56%

| | | |
|-------------------|-------------------------------|-------|
| YTD (Rp) | 2.5% Volume (m) : | 3,797 |
| YTD (USD) | 7.6% Nilai (Rpbn) : | 3,608 |
| Moving Avg 20day | 3,816 Mkt Cap (Rpbn) : | 3,405 |
| Moving Avg 50day | 3,791 Market P/E (x) : | 16.2 |
| Moving Avg 200day | 3,596 Market Div. Yield (%) : | 2.4 |

Indonesia & Sectors +/- (%) YTD (%)

| | | | | |
|----------------|---------|------|-------|-------|
| MSCI Indonesia | 4,687.3 | 38.9 | 0.84 | 3.10 |
| JII | 521.8 | 2.5 | 0.48 | -2.08 |
| LQ45 | 672.2 | 4.5 | 0.67 | 1.63 |
| JAKFIN Index | 493.3 | 4.0 | 0.01 | 5.70 |
| JAKINFR Index | 770.1 | 3.3 | 0.00 | -5.99 |
| JAKMINE Index | 3,237.3 | -9.9 | -0.00 | -1.13 |
| JAKCONS Index | 1,133.8 | 6.5 | 0.01 | 3.58 |
| JAKTRAD Index | 510.6 | 1.5 | 0.00 | 7.71 |
| JAKMIND Index | 1,068.0 | 23.9 | 0.02 | 10.44 |
| JAKBIND Index | 395.6 | 2.5 | 0.01 | 2.15 |
| JAKPROP Index | 205.2 | -0.1 | -0.00 | 1.03 |
| JAKAGRI Index | 2,333.9 | -2.4 | -0.00 | 2.17 |

Commodities +/- (%) YTD (%)

| | | | | |
|--------------------------|----------|-------|-------|--------|
| CRB Index | 338.96 | -8.1 | -2.32 | 1.85 |
| Oil & Gas | | | | |
| Crude Oil | 94.81 | -4.6 | -4.59 | 3.75 |
| Natural Gas | 4.58 | -0.0 | -0.09 | 3.90 |
| COAL (Rotterdam) | 125.55 | -0.8 | -0.63 | -4.45 |
| COAL (Amsterdam) | 124.85 | -1.6 | -1.27 | -0.87 |
| COAL (Australia,wk) | 119.20 | 0.0 | 0.00 | -2.61 |
| Industrial Metals | | | | |
| Aluminium | 2,574.5 | -36.0 | -1.38 | 4.69 |
| Nickel | 22,030 | -285 | -1.28 | -10.99 |
| Tin | 25,150 | -500 | -1.95 | -6.51 |
| Precious Metal | | | | |
| Gold | 1,526.20 | 1.8 | 0.12 | 7.37 |
| Silver | 35.41 | -0.0 | -0.00 | 14.56 |
| Soft Commodities | | | | |
| CPO (Malaysia) | 3,284.00 | 11.0 | 0.34 | -13.90 |
| CPO (Netherlands) | 1,157.50 | 15.0 | 1.31 | -9.92 |
| Rubber | 5,156.87 | -6.5 | -0.13 | 3.26 |
| Corn | 725.75 | -29.8 | -3.94 | 15.38 |
| Wheat | 708.50 | -22.8 | -3.11 | -10.80 |
| Soybeans | 1,368.00 | 0.0 | 0.00 | -1.85 |
| Rice (Indonesia) | 6,850.00 | 0.0 | 0.00 | -3.52 |

Regional Indices +/- (%) YTD (%)

| | | | | | |
|----------------------|------------|----------|--------|-------|--------|
| MXWO | MSCI World | 1,284.0 | -21.9 | -1.67 | 0.30 |
| SPX | S&P 500 | 1,265.4 | -22.4 | -1.74 | 0.62 |
| US | | | | | |
| Dow Jones Industrial | | 11,897.3 | -178.8 | -1.48 | 2.76 |
| Nasdaq | US | 2,631.5 | -47.3 | -1.76 | -0.81 |
| Europe | | | | | |
| EURO 50 | Europe | 268.0 | -2.9 | -1.06 | -2.85 |
| FTSE | London | 5,742.6 | -60.6 | -1.04 | -2.67 |
| DAX | Germany | 7,115.1 | -89.7 | -1.25 | 2.91 |
| CAC | France | 3,806.9 | -57.7 | -1.49 | 0.05 |
| SMI | Swiss | 6,198.2 | -57.5 | -0.92 | -3.70 |
| BRIC | | | | | |
| BOVESPA | Brazil | 61,603.7 | -601.1 | -0.97 | -11.11 |
| MICEX | Russia | 1,678.8 | -2.8 | -0.17 | -0.54 |
| SENSEX | India | 18,132.2 | -176.4 | -0.96 | -11.59 |
| NIFTY | India | 5,447.5 | -53.0 | -0.96 | -11.20 |
| SHCOMP | China | 2,705.4 | -24.6 | -0.90 | -3.66 |
| SZCOMP | China | 1,118.2 | -10.3 | -0.91 | -13.38 |

Developed ASIA

| | | | | | |
|--------|-----------|----------|--------|-------|-------|
| Nikkei | Japan | 9,574.3 | 26.5 | 0.28 | -6.40 |
| TPX | Japan | 824.7 | 1.8 | 0.22 | -8.25 |
| HIS | Hong kong | 22,343.8 | -152.2 | -0.68 | -3.00 |
| KOSPI | S.Korea | 2,086.5 | 9.7 | 0.47 | 1.73 |
| TAIEX | Taiwan | 8,831.5 | 2.2 | 0.03 | -1.57 |
| FSSTI | Singapore | 3,054.8 | -2.6 | -0.08 | -4.24 |

ASEAN

| | | | | | |
|---------|-------------|---------|------|-------|-------|
| SET | Thailand | 1,030.3 | -4.6 | -0.45 | -0.24 |
| PCOMP | Philippines | 4,201.4 | 61.1 | 1.48 | 0.01 |
| KLCI | Malaysia | 1,556.2 | 7.7 | 0.50 | 2.45 |
| VNINDEX | Vietnam | 441.5 | -0.1 | -0.02 | -8.92 |

Currency +/- (%) YTD (%)

| | | | | | |
|--------|----------------|---------|--------|-------|-------|
| EURUSD | Euro | 1.418 | -0.026 | -1.79 | 5.95 |
| GBPUSD | United Kingdom | 1.619 | -0.018 | -1.08 | 3.73 |
| USDCHE | Switzerland | 0.853 | 0.008 | 0.90 | -8.79 |
| USDCAD | Canada | 0.979 | 0.011 | 1.13 | -1.89 |
| AUDUSD | Australia | 1.058 | -0.011 | -1.01 | 3.36 |
| NZDUSD | New Zealand | 0.807 | -0.012 | -1.41 | 3.38 |
| USDJPY | Japan | 81.0 | 0.470 | 0.58 | -0.20 |
| USDCNY | China | 6.482 | 0.002 | 0.03 | -1.89 |
| USDHKD | Hongkong | 7.791 | 0.006 | 0.08 | 0.23 |
| USDSGD | Singapore | 1.238 | 0.007 | 0.60 | -3.55 |
| Rupiah | Indonesia | 8,548.0 | 14.000 | 0.16 | -4.98 |

Winners

| Stock | Price | (%) | Stock | Price | (%) |
|-------|--------|------|-------|-------|-------|
| EXCL | 6,200 | 3.33 | BNBR | 71 | -4.05 |
| MNCN | 930 | 3.33 | TPIA | 3,800 | -3.18 |
| ASII | 59,000 | 2.88 | ICBP | 5,000 | -2.91 |
| BYAN | 19,600 | 2.62 | BRMS | 760 | -2.56 |
| SMGR | 9,400 | 2.17 | BRAU | 550 | -1.79 |
| BBCA | 7,150 | 2.14 | HRUM | 9,300 | -1.59 |
| GGRM | 46,250 | 1.76 | BUMI | 3,275 | -1.50 |
| BBRI | 6,400 | 1.59 | BORN | 1,530 | -1.29 |
| INDF | 5,350 | 0.94 | ADRO | 2,400 | -1.03 |
| PGAS | 4,000 | 0.63 | TLKM | 7,250 | -0.68 |

Losers

Value

| Value (Rpbn) | Volume (Lot) | Freq | (x) |
|--------------|----------------|------|-------|
| BUMI 331,519 | BNBR 1,177,905 | EKAD | 4,351 |
| ASII 248,703 | ENRG 678,540 | MNCN | 3,646 |
| BBRI 187,880 | DEWA 629,077 | SPMA | 3,291 |
| BMRI 156,514 | ELTY 504,871 | BUVA | 2,970 |
| TLKM 102,620 | BUMI 201,556 | BUMI | 2,344 |
| SIMP 84,074 | TRUB 160,147 | BHIT | 2,119 |
| BBCA 81,509 | MIRA 159,483 | ASII | 2,014 |
| BORN 73,366 | BHIT 159,478 | ELTY | 2,008 |
| ENRG 66,855 | TRAM 152,062 | LPLI | 1,820 |
| EXCL 60,581 | EKAD 145,466 | BULL | 1,770 |

| Code | Last | Ytd Chg(%) | H-5 Chg (%) | Rekomendasi | STO | RSI | MACD | Bollinger Band | | Support | | | Resistance | | | H-5 | |
|------|--------|------------|-------------|--------------|------|------|---------|----------------|--------|---------|--------|--------|------------|--------|--------|---------|--------|
| | | | | | | | | Top | Bottom | 1 | 2 | 3 | 1 | 2 | 3 | Highest | Lowest |
| AALI | 23,050 | -13.99 | -1.50 | Trading | 44.8 | 46.4 | (86.9) | 23,250 | 22,700 | 22,950 | 22,800 | 22,650 | 23,250 | 23,400 | 23,550 | 23,450 | 22,500 |
| ACES | 3,000 | 5.26 | -0.83 | TakeProfit | 70.3 | 68.3 | 87.7 | 3,075 | 2,900 | 2,950 | 2,875 | 2,850 | 3,050 | 3,075 | 3,150 | 3,075 | 2,750 |
| ADRO | 2,400 | -10.28 | -2.04 | Trading | 46.7 | 52.2 | 29.9 | 2,450 | 2,375 | 2,375 | 2,350 | 2,300 | 2,450 | 2,500 | 2,525 | 2,475 | 2,350 |
| AKRA | 1,810 | 6.47 | 1.12 | TakeProfit | 73.3 | 67.5 | 45.6 | 1,820 | 1,800 | 1,800 | 1,780 | 1,770 | 1,830 | 1,840 | 1,860 | 1,820 | 1,770 |
| ANTM | 2,125 | -14.14 | 0.00 | OverBought | 75.0 | 31.7 | (30.0) | 2,125 | 2,125 | 2,100 | 2,075 | 2,050 | 2,150 | 2,175 | 2,200 | 2,150 | 2,075 |
| ASII | 59,000 | 8.46 | -0.84 | Trading | 46.7 | 53.2 | 104.3 | 59,800 | 55,900 | 58,150 | 57,300 | 56,800 | 59,500 | 60,000 | 60,850 | 59,500 | 55,950 |
| BBCA | 7,150 | 10.85 | 2.14 | OverSold | 37.5 | 52.3 | (50.6) | 7,200 | 6,950 | 7,050 | 6,950 | 6,850 | 7,250 | 7,350 | 7,450 | 7,200 | 7,000 |
| BBNI | 3,700 | -2.63 | -1.33 | Accumulate | 25.0 | 36.9 | (56.3) | 3,775 | 3,650 | 3,675 | 3,650 | 3,600 | 3,750 | 3,800 | 3,825 | 3,825 | 3,650 |
| BBRI | 6,400 | 23.67 | 0.00 | Trading | 58.8 | 54.2 | 8.7 | 6,450 | 6,250 | 6,350 | 6,300 | 6,250 | 6,450 | 6,500 | 6,550 | 6,450 | 6,150 |
| BBTN | 1,650 | -1.20 | -1.20 | Trading | 45.8 | 49.5 | (12.3) | 1,670 | 1,600 | 1,640 | 1,620 | 1,610 | 1,670 | 1,680 | 1,700 | 1,670 | 1,590 |
| BDMN | 6,000 | 9.09 | -1.64 | Trading | 58.3 | 44.5 | (31.8) | 6,100 | 6,000 | 5,950 | 5,900 | 5,850 | 6,050 | 6,100 | 6,150 | 6,100 | 5,900 |
| BISI | 1,370 | -26.74 | -11.04 | StrongBuy | 8.8 | 18.7 | (61.8) | 1,490 | 1,320 | 1,360 | 1,340 | 1,320 | 1,400 | 1,420 | 1,440 | 1,560 | 1,360 |
| BMRI | 6,950 | 7.75 | -0.71 | Trading | 41.7 | 45.2 | (30.5) | 7,050 | 6,900 | 6,950 | 6,900 | 6,850 | 7,050 | 7,100 | 7,150 | 7,050 | 6,850 |
| BSDE | 880 | 0.00 | -2.22 | OverSold | 29.4 | 43.3 | (5.1) | 915 | 855 | 870 | 860 | 850 | 890 | 900 | 910 | 920 | 860 |
| BTEL | 360 | 53.19 | 0.00 | OverBought | 71.4 | 44.5 | (6.2) | 365 | 344 | 354 | 347 | 344 | 364 | 367 | 374 | 365 | 330 |
| BUMI | 3,275 | 4.80 | -2.96 | OverSold | 20.0 | 40.8 | (20.9) | 3,475 | 3,200 | 3,225 | 3,175 | 3,100 | 3,350 | 3,425 | 3,475 | 3,475 | 3,225 |
| CTRA | 435 | 24.29 | 1.16 | OverSold | 32.0 | 60.1 | 9.5 | 446 | 423 | 430 | 425 | 420 | 440 | 445 | 450 | 460 | 420 |
| ELTY | 150 | -6.83 | -7.98 | StrongBuy | 12.8 | 40.4 | 0.3 | 161 | 147 | 148 | 145 | 141 | 155 | 159 | 162 | 168 | 149 |
| EXCL | 6,200 | 18.10 | 5.98 | StrongSell | 84.0 | 54.8 | (80.5) | 6,350 | 5,750 | 6,050 | 5,900 | 5,750 | 6,350 | 6,500 | 6,650 | 6,300 | 5,700 |
| GGRM | 46,250 | 12.67 | 1.54 | TakeProfit | 67.4 | 66.4 | 853.1 | 47,000 | 43,750 | 45,900 | 45,500 | 45,200 | 46,600 | 46,900 | 47,300 | 46,500 | 43,600 |
| HEXA | 6,400 | -11.72 | 1.59 | Trading | 55.6 | 52.8 | 44.7 | 6,500 | 6,200 | 6,350 | 6,300 | 6,250 | 6,450 | 6,500 | 6,550 | 6,450 | 6,150 |
| INCO | 4,575 | -8.04 | -2.14 | Accumulate | 30.4 | 30.8 | (70.7) | 4,675 | 4,525 | 4,550 | 4,525 | 4,475 | 4,625 | 4,675 | 4,700 | 4,700 | 4,500 |
| INDF | 5,350 | 8.08 | 0.94 | Trading | 40.0 | 47.6 | (60.9) | 5,450 | 5,200 | 5,350 | 5,300 | 5,250 | 5,450 | 5,500 | 5,550 | 5,500 | 5,150 |
| INDY | 3,950 | -22.55 | -3.66 | Accumulate | 24.1 | 38.0 | (28.4) | 4,075 | 3,900 | 3,925 | 3,900 | 3,850 | 4,000 | 4,050 | 4,075 | 4,150 | 3,900 |
| INTP | 16,800 | 4.67 | -0.59 | OverSold | 34.5 | 48.5 | (40.7) | 17,000 | 16,450 | 16,650 | 16,450 | 16,300 | 17,000 | 17,150 | 17,350 | 17,350 | 16,350 |
| ISAT | 5,150 | -5.50 | -0.96 | Trading | 44.4 | 43.4 | (42.9) | 5,200 | 5,100 | 5,100 | 5,050 | 5,000 | 5,200 | 5,250 | 5,300 | 5,200 | 5,050 |
| ITMG | 46,400 | -14.55 | -2.01 | OverSold | 36.8 | 43.7 | (200.7) | 47,200 | 45,550 | 46,200 | 46,000 | 45,700 | 46,700 | 47,000 | 47,200 | 47,500 | 45,500 |
| JSMR | 3,450 | -2.82 | 2.99 | OverBought | 60.0 | 54.4 | (4.7) | 3,525 | 3,300 | 3,425 | 3,400 | 3,375 | 3,475 | 3,500 | 3,525 | 3,475 | 3,325 |
| KLBF | 3,300 | -0.75 | -2.22 | Accumulate | 25.0 | 39.8 | (56.3) | 3,375 | 3,225 | 3,275 | 3,250 | 3,225 | 3,325 | 3,350 | 3,375 | 3,425 | 3,225 |
| LSIP | 2,375 | -6.50 | 1.06 | Trading | 46.2 | 47.6 | (14.1) | 2,400 | 2,325 | 2,350 | 2,325 | 2,300 | 2,400 | 2,425 | 2,450 | 2,400 | 2,300 |
| MYOR | 13,000 | 20.37 | -0.76 | Trading | 48.6 | 64.6 | 308.3 | 13,150 | 12,750 | 12,850 | 12,700 | 12,600 | 13,100 | 13,200 | 13,350 | 13,200 | 12,500 |
| PGAS | 4,000 | -10.61 | 0.63 | OverBought | 69.2 | 48.2 | (17.8) | 4,025 | 3,950 | 3,975 | 3,925 | 3,900 | 4,050 | 4,075 | 4,125 | 4,025 | 3,900 |
| PTBA | 21,000 | -12.32 | 0.00 | Trading | 42.4 | 40.0 | (196.9) | 21,050 | 20,900 | 20,950 | 20,900 | 20,800 | 21,100 | 21,200 | 21,250 | 21,250 | 20,750 |
| RALS | 770 | -10.47 | -6.10 | Trading Sell | 22.7 | 45.3 | 6.7 | 805 | 760 | 20,870 | 20,870 | 20,870 | 20,870 | 20,870 | 20,870 | 840 | 760 |
| SGRO | 3,375 | 3.85 | -1.46 | OverSold | 33.3 | 47.1 | 5.7 | 3,450 | 3,350 | 3,350 | 3,325 | 3,300 | 3,400 | 3,425 | 3,450 | 3,475 | 3,325 |
| SMCB | 2,175 | -2.25 | 0.00 | Trading | 52.4 | 52.1 | (0.8) | 2,200 | 2,100 | 2,150 | 2,125 | 2,100 | 2,200 | 2,225 | 2,250 | 2,225 | 2,050 |
| SMGR | 9,400 | -4.57 | 1.08 | OverSold | 36.8 | 46.0 | (67.4) | 9,450 | 9,150 | 9,300 | 9,200 | 9,100 | 9,500 | 9,600 | 9,700 | 9,500 | 9,150 |
| SMRA | 1,140 | 5.56 | -1.72 | Trading | 43.8 | 51.4 | (3.2) | 1,150 | 1,110 | 1,130 | 1,120 | 1,110 | 1,150 | 1,160 | 1,170 | 1,200 | 1,080 |
| TINS | 2,500 | -12.28 | -3.85 | Accumulate | 28.6 | 28.3 | (57.2) | 2,575 | 2,475 | 2,475 | 2,425 | 2,375 | 2,575 | 2,625 | 2,675 | 2,600 | 2,475 |
| TLKM | 7,250 | -9.38 | -3.33 | Accumulate | 33.3 | 35.0 | (50.0) | 7,550 | 7,200 | 7,200 | 7,150 | 7,100 | 7,300 | 7,350 | 7,400 | 7,550 | 7,150 |
| UNTR | 22,900 | -5.76 | -1.08 | Trading | 42.2 | 55.4 | 157.9 | 23,050 | 22,700 | 22,800 | 22,700 | 22,550 | 23,050 | 23,200 | 23,300 | 23,250 | 22,500 |
| UNVR | 14,850 | -7.48 | 0.34 | Trading | 42.9 | 49.3 | (61.3) | 14,950 | 14,600 | 14,800 | 14,750 | 14,650 | 14,950 | 15,050 | 15,100 | 14,950 | 14,600 |

S1 = Support 1 S2 = Support 2 S3 = Support 3
 R1 = Resisten 1 R2 = Resisten 2 R2 = Resisten 2
 STO = Stochastic Oscillator
 RSI = Relative Strength Index
 MACD = Moving Average Convergence Divergence
 H-5 = 5 hari sebelumnya

RESEARCH TEAM

| | | |
|-------------------------------|--------------------|-----------------------------------|
| Andrian Tanuwijaya | Equity Analyst | (andrian.tanuwijaya@trimegah.com) |
| Hanel Topada Era Tania | Equity Analyst | (hanel.tania@trimegah.com) |
| Paul Raymond Widjaja | Equity Analyst | (paul.widjaja@trimegah.com) |
| T Hedy Arifien | Technical Analyst | (hedy@trimegah.com) |
| Rovandi | Research Assistant | (rovandi@trimegah.com) |

EQUITY CAPITAL MARKET TEAM

| | | |
|----------------------------------|------------------------------|---------------------------------|
| Nathanael Benny Prasetyo | Head of Retail ECM | (benny.prasetyo@trimegah.com) |
| Windra Djulnaily | Pluit, Jakarta | (windra.djulnaily@trimegah.com) |
| Ariawan Anwar | Artha Graha, Jakarta | (ariawan.anwar@trimegah.com) |
| Ferry Zabur | Kelapa Gading, Jakarta | (ferry.zabur@trimegah.com) |
| Wirjawan Joesoef | Mangga Dua, Jakarta | (iwan@trimegah.com) |
| Lukman Abdul Azis | Kebon Jeruk, Jakarta | (lukman@trimegah.com) |
| Tutik Suciati | Semarang, Jawa Tengah | (tuty.s@trimegah.com) |
| Sonny Muljadi | Surabaya, Jawa Timur | (sonny.muljadi@trimegah.com) |
| Ni Luh Ketut Sri Agustini | Denpasar, Bali | (sri.agustini@trimegah.com) |
| Philip Fernando Suwandi | Makassar, Sulawesi Selatan | (philip.fs@trimegah.com) |
| agus.jatmiko | Balikpapan, Kalimantan Timur | (agus.jatmiko@trimegah.com) |
| Asep Saepudin | Bandung, Jawa Barat | (asep.saepudin@trimegah.com) |
| Asep Saepudin | Cirebon, Jawa Barat | (asep.saepudin@trimegah.com) |
| Very Wijaya | Medan, Sumatera Utara | (very.wijaya@trimegah.com) |
| Tantie Rivi Watie | Pekanbaru, Riau | (tantierw@trimegah.com) |
| Agus Bambang Suseno | Solo, Jawa Tengah | (agus.suseno@trimegah.com) |
| Agus Bambang Suseno | Yogyakarta, Jawa Tengah | (agus.suseno@trimegah.com) |
| Donny Kristanto Setiadi | Palembang, Sumatra Selatan | (donny.kristanto@trimegah.com) |
| Sonny Muljadi | Malang, Jawa Timur | (sonny.muljadi@trimegah.com) |

PT Trimegah Securities Tbk
18th Fl, Artha Graha Building
Jl. Jend. Sudirman Kav. 52-53
Jakarta 12190, INDONESIA
Tel : (6221) 2924 9088 Fax : (6221) 2924 9163

DISCLAIMER

This report has been prepared by PT Trimegah Securities Tbk on behalf of itself and its affiliated companies and is provided for information purposes only. Under no circumstances is it to be used or considered as an offer to sell, or a solicitation of any offer to buy. This report has been produced independently and the forecasts, opinions and expectations contained herein are entirely those of Trimegah Securities.

While all reasonable care has been taken to ensure that information contained herein is not untrue or misleading at the time of publication, Trimegah Securities makes no representation as to its accuracy or completeness and it should not be relied upon as such. This report is provided solely for the information of clients of Trimegah Securities who are expected to make their own investment decisions without reliance on this report. Neither Trimegah Securities nor any officer or employee of Trimegah Securities accept any liability whatsoever for any direct or consequential loss arising from any use of this report or its contents. Trimegah Securities and/or persons connected with it may have acted upon or used the information herein contained, or the research or analysis on which it is based, before publication. Trimegah Securities may in future participate in an offering of the company's equity securities.