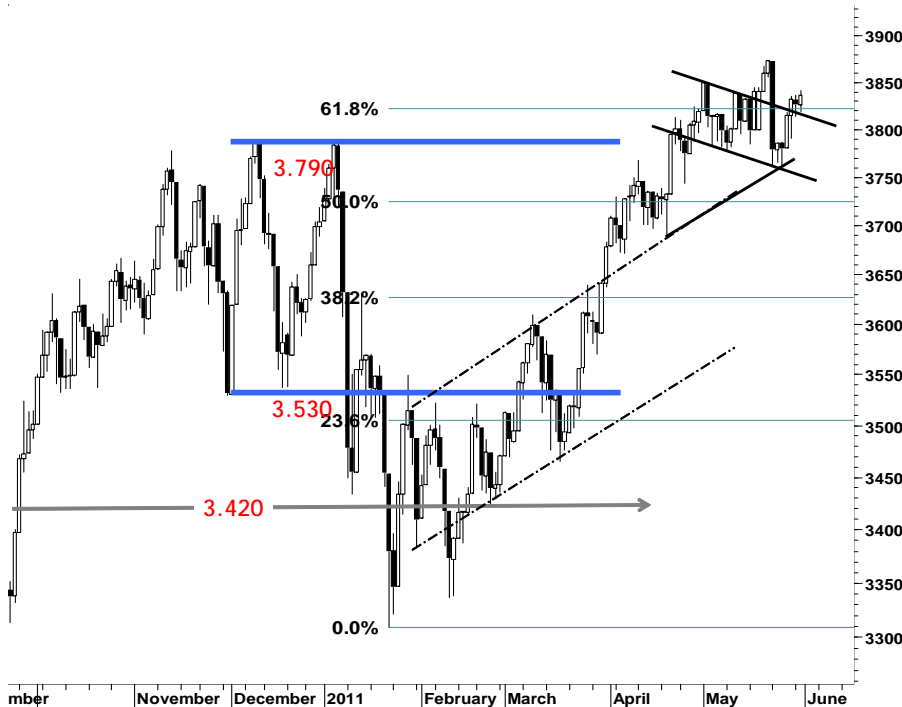


IHSG

3.837,0

10,8 -0,16%

Ulisan Pasar



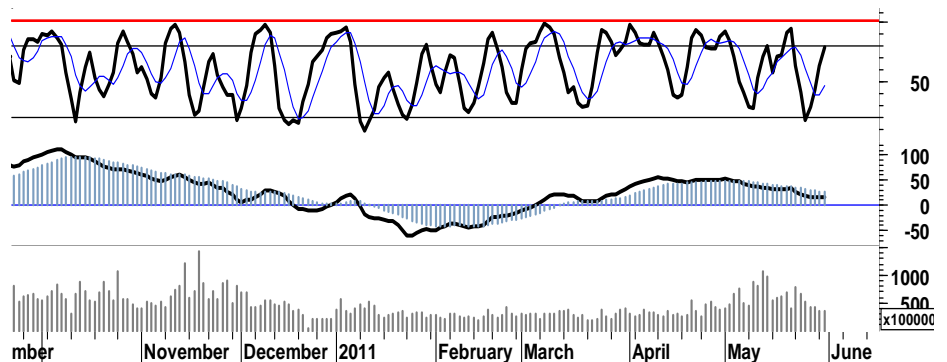
Ditengah kondusifnya situasi pergerakan bursa regional serta maraknya rally penguatan di hampir seluruh bursa utama Asia, IHSG justru hanya mampu membukukan nilai positif 10,8 poin dan ditutup di 3.837 gagal mencapai resistensi harga 3.850.

Aksi profit taking yang terjadi pada sektor perbankan serta pertambangan, menahan laju pergerakan IHSG untuk melanjutkan rally penguatan menuju resistensi psikologis 3.850. Potensi rendahnya inflasi bulan Mei 2011 yang bahkan di sinyalir mengalami deflasi sebagaimana yang terjadi di bulan April lalu, tidak cukup kuat mendorong emiten pada sektor retail yang cenderung bergerak variatif mencoba menahan derasnya tekanan jual kemarin.

Dengan tersedianya ruang sempit fastmoving oscillator maupun leading indicator penunjang lain, diharapkan IHSG pada perdagangan hari ini masih memiliki sisa kekuatan yang mungkin diperoleh dari tumbuhnya rasio volume

perdagangan kemarin yang mencapai 92% untuk mencoba merambah resistensi harga 3.850.

Signal negatif yang harus di waspadai adalah tingginya valuasi technical pada saham-saham unggulan maupun favorit, yang di khawatirkan akan menahan laju pencapaian resistensi harga dan justru berpotensi menyeret kembali IHSG memasuki area konsolidasi selanjutnya bergerak dalam interval 3.790 - 3.840.



S1	S2	R1	R2
3,825	3,810	3,845	3,855

Saham Pilihan

Saham	Harga (Rp)	Rekomendasi	Stochastic	RSI	BB Top	BB Bottom	S1	S2	R1	R2
AALI	23,600	Trading	59.74	54.10	23,850	22,700	23,300	23,000	24,000	24,300
ADRO	2,450	StrongSell	88.24	64.34	2,475	2,350	2,400	2,350	2,550	2,600
BDMN	6,200	StrongSell	89.47	55.69	6,350	5,850	6,100	5,950	6,350	6,500
MYOR	13,000	StrongSell	92.19	77.57	13,300	12,300	12,900	12,800	13,100	13,200
SGRO	3,450	OverBought	63.64	57.30	3,500	3,400	3,425	3,400	3,500	3,525
UNTR	23,000	StrongSell	95.00	59.89	23,500	22,000	22,800	22,600	23,300	23,500



Signal positif leading indicator, memberikan peluang bagi AAI untuk mencoba menutup sepenuhnya resistensi celah harga 23.900.

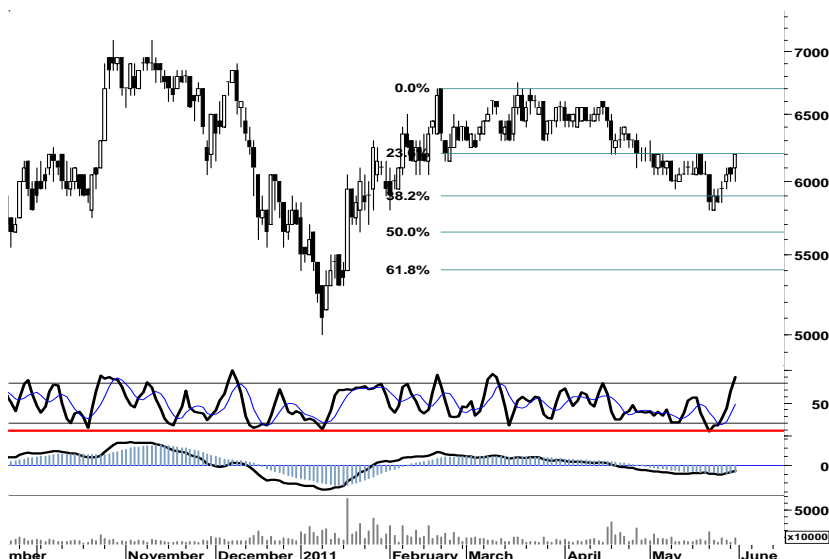
Namun waspadai pelemahan yang mungkin terjadi, apabila AAI gagal melakukan penetrasi resistensi harga 24.000.

S1	S2	R1	R2
23,300	23,000	24,000	24,300



Yang perlu di waspadai disaat ADRO mencoba mencapai resistensi 2.550 pada area overbought adalah, sempitnya ruang pergerakan penguatan dan potensi pembalikan arah menguji kembali support 2.350 apabila ADRO gagal bertahan pada support 2.400.

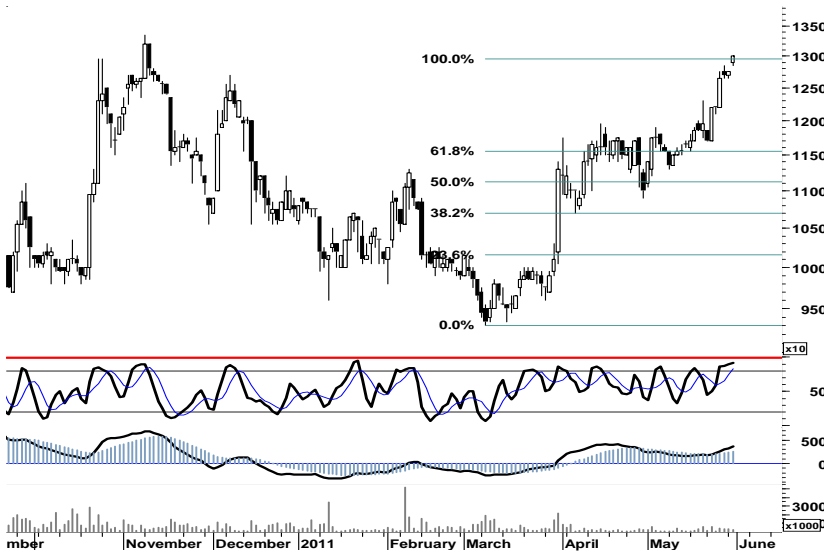
S1	S2	R1	R2
2,400	2,350	2,550	2,600



Rawan bayang-bayang aksi ambil untung, akan menyelimti peluang gerak BDMN menguji penetrasi resistensi 6.200 pada fibbo ratio 23,6%.

Waspada potensi arah negatif BDMN menuju 5.850 dengan memperketat stop loss harga jangka pendek di level 6.000, apabila gagal melakukan penetrasi resistensi 6.350.

S1	S2	R1	R2
6,100	5,950	6,350	6,500



Disaat MYOR berhasil mencapai siklus penuhnya di level 1.300, ancaman yang terlihat justru dari signal overbought leading indicator jangka pendek serta terciptanya celah support harga 12.750 - 12.850.

Setidaknya signal positif yang tersisa dalam area overbought, memberikan peluang bagi MYOR untuk bergerak dalam interval 12.200 - 13.100.

S1	S2	R1	R2
12,900	12,800	13,100	13,200



Untuk dapat keluar dari downtrend channel jangka pendek, SGRO di harapkan mampu memanfaatkan sisa ruang penguatan untuk melakukan penetrasi trend resisten harga 3.500.

Manfaatkan sisa ruang penguatan yang di dukung oleh signal positif stochastic, dengan melakukan trading dalam kisaran 3.350 - 3.525.

S1	S2	R1	R2
3,425	3,400	3,500	3,525



Signal positif yang diberikan oleh stochastic pada area overbought, diharapkan mampu memberikan ruang bagi UNTR untuk bergerak menguji pencapaian resistensi harga 23.000.

S1	S2	R1	R2
22,800	22,600	23,300	23,500

TRADE DATA

JCI (IHSG) 3,837.0 10.8 0.28%

YTD (Rp)	3.6%	Volume (m) :	8,529
YTD (USD)	8.5%	Nilai (Rpbn) :	7,267
Moving Avg 20day	3,817	Mkt Cap (Rpbn) :	3,419
Moving Avg 50day	3,750	Market P/E (x) :	16.5
Moving Avg 200day	3,558	Market Div. Yield (%) :	2.4

Indonesia & Sectors +/- (%) YTD (%)

MSCI Indonesia	4,747.7	3.3	0.07	4.42
JII	531.4	2.0	0.37	-0.29
LQ45	682.3	1.6	0.23	3.16
JAKFIN Index	501.6	-0.2	-0.00	7.48
JAKINFR Index	793.8	1.1	0.00	-3.11
JAKMINE Index	3,236.3	2.8	0.00	-1.16
JAKCONS Index	1,122.5	4.7	0.00	2.54
JAKTRAD Index	514.1	7.3	0.01	8.44
JAKMIND Index	1,064.3	-3.2	-0.00	10.06
JAKBIND Index	405.2	2.9	0.01	4.64
JAKPROP Index	209.4	2.3	0.01	3.10
JAKAGRI Index	2,384.4	9.5	0.00	4.38

Commodities +/- (%) YTD (%)

CRB Index	350.06	3.8	1.09	5.19
Oil & Gas				
Crude Oil	102.70	2.1	2.10	12.39
Natural Gas	4.67	0.1	3.28	5.93
COAL (Rotterdam)	126.25	5.1	4.21	-3.92
COAL (Amsterdam)	122.91	1.5	1.24	-2.41
COAL (Australia,wk)	118.40	0.0	0.00	-3.27
Industrial Metals				
Aluminium	2,661.3	48.3	1.85	8.21
Nickel	23,595	505	2.19	-4.67
Tin	27,940	440	1.60	3.87
Precious Metal				
Gold	1,535.90	-0.4	-0.03	8.06
Silver	38.31	0.4	1.17	23.92
Soft Commodities				
CPO (Malaysia)	3,475.00	-44.0	-1.25	-8.89
CPO (Netherland)	1,192.50	-7.5	-0.62	-7.20
Rubber	5,169.28	-19.7	-0.38	3.51
Corn	747.50	-11.0	-1.45	18.84
Wheat	782.25	-37.5	-4.57	-1.51
Soybeans	1,376.00	-3.8	-0.27	-1.27
Rice (Indonesia)	6,750.00	0.0	0.00	-4.93

Winners

Stock	Price	(%)	Stock	Price	(%)
BHIT	225	21.62	TOWR	10,400	-4.59
BMTR	840	9.09	BNII	580	-3.33
JPFA	4,175	8.44	SMAR	7,600	-3.18
KLBF	3,575	5.93	EXCL	6,150	-2.38
SMCB	2,250	4.65	BUMI	3,300	-2.22
ADRO	2,450	3.16	INTP	16,900	-1.46
BDMN	6,200	2.48	ITMG	47,000	-1.36
AALI	23,600	2.16	UNVR	14,700	-1.01
BYAN	17,400	1.75	BBRI	6,350	-0.78
TLKM	7,700	1.32	ASII	58,750	-0.51

Losers

Stock	Price	(%)	Stock	Price	(%)
TOWR	10,400	-4.59	BNII	580	-3.33
BNII	580	-3.33	SMAR	7,600	-3.18
SMAR	7,600	-3.18	EXCL	6,150	-2.38
EXCL	6,150	-2.38	BUMI	3,300	-2.22
BUMI	3,300	-2.22	INTP	16,900	-1.46
INTP	16,900	-1.46	ITMG	47,000	-1.36
ITMG	47,000	-1.36	UNVR	14,700	-1.01
UNVR	14,700	-1.01	BBRI	6,350	-0.78
BBRI	6,350	-0.78	ASII	58,750	-0.51
ASII	58,750	-0.51			

Regional Indices +/- (%) YTD (%)

MXWO	MSCI World	1,354.6	16.3	1.22	5.82
SPX	S&P 500	1,345.2	14.1	1.06	6.96
US					
Dow Jones Industrial		12,569.8	128.2	1.03	8.57
Nasdaq	US	2,835.3	38.4	1.37	6.88
Europe					
EURO 50	Europe	281.1	2.2	0.80	1.90
FTSE	London	5,990.0	51.1	0.86	1.53
DAX	Jerman	7,293.7	133.4	1.86	5.49
CAC	France	4,006.9	64.4	1.63	5.31
SMI	Swiss	6,554.7	83.9	1.30	1.84
BRIC					
BOVESPA	Brazil	64,620.1	666.1	1.04	-6.76
MICEX	Russia	1,666.3	21.3	1.30	-1.28
SENSEX	India	18,503.3	271.2	1.49	-9.78
NIFTY	India	5,560.2	87.0	1.59	-9.36
SHCOMP	China	2,743.5	37.1	1.37	-2.30
SZCOMP	China	1,111.9	21.4	1.96	-13.86

Developed ASIA

Nikkei	Japan	9,693.7	188.8	1.99	-5.23
TPX	Japan	838.5	14.8	1.80	-6.71
HIS	Hong kong	23,684.1	499.8	2.16	2.82
KOSPI	S.Korea	2,142.5	48.7	2.32	4.46
TAIEX	Taiwan	8,988.8	165.2	1.87	0.18
FSSTI	Singapore	3,159.9	19.3	0.62	-0.94

ASEAN

SET	Thailand	1,073.8	-2.7	-0.25	3.98
PCOMP	Philippines	4,244.6	-50.6	-1.18	1.04
KLCI	Malaysia	1,558.3	15.5	1.00	2.59
VNINDEX	Vietnam	421.4	9.3	2.25	-13.06

Currency +/- (%) YTD (%)

EURUSD	Euro	1.440	0.011	0.80	7.56
GBPUSD	United Kingdom	1.645	-0.003	-0.16	5.35
USDCHF	Switzerland	0.854	0.002	0.20	-8.68
USDCAD	Canada	0.969	-0.009	-0.88	-2.96
AUDUSD	Australia	1.067	-0.002	-0.18	4.29
NZDUSD	New Zealand	0.824	0.008	0.93	5.60
USDJPY	Japan	81.5	0.580	0.72	0.49
USDCNY	China	6.479	-0.005	-0.07	-1.94
USDHKD	Hongkong	7.777	-0.002	-0.03	0.05
USDSGD	Singapore	1.233	-0.002	-0.16	-3.90
Rupiah	Indonesia	8,543.0	-5.000	-0.06	-5.04

Value

Value	(Rpbn)	Volume	(Lot)	Freq	(x)
ADRO	777,164	BNBR	1,767,623	BHIT	11,275
BUMI	621,049	ELTY	1,399,408	GDST	6,346
EXCL	426,037	ENRG	1,349,789	ELTY	5,011
ASII	330,181	BHIT	1,332,904	ADRO	4,867
BBRI	235,775	DEWA	721,972	ENRG	3,721
BMRI	233,256	ADRO	639,538	BBKP	3,535
BHIT	132,786	BUMI	371,786	BUMI	3,047
ENRG	128,109	MYRX	325,069	ELSA	2,647
HRUM	113,746	ASRI	322,346	MNCN	2,631
ELTY	109,283	SIPD	270,256	EXCL	2,498

Code	Last	Ytd Chg(%)	H-5 Chg (%)	Rekomendasi	STO	RSI	MACD	Bollinger Band		Support			Resistance			H-5	
								Top	Bottom	1	2	3	1	2	3	Highest	Lowest
AALI	23,600	-11.94	1.94	Trading	59.7	54.1	46.9	23,850	22,700	23,300	23,000	22,800	23,800	24,000	24,300	23,650	22,400
ACES	2,700	-5.26	0.00	StrongSell	100.0	55.9	21.9	2,700	2,700	2,700	2,700	2,700	2,700	2,700	2,700	2,700	2,600
ADRO	2,450	-8.41	5.38	StrongSell	88.2	64.3	33.7	2,475	2,350	2,400	2,350	2,300	2,500	2,550	2,600	2,475	2,275
AKRA	1,840	8.24	10.18	StrongSell	95.8	75.9	43.5	1,900	1,650	1,790	1,740	1,710	1,870	1,900	1,950	1,840	1,640
ANTM	2,150	-13.13	0.00	OverBought	60.0	40.1	(32.6)	2,200	2,125	2,125	2,100	2,075	2,175	2,200	2,225	2,175	2,100
ASII	58,750	8.00	1.12	Trading	56.0	53.2	676.2	59,850	58,100	58,300	57,850	57,150	59,450	60,150	60,600	60,000	57,300
BBCA	7,100	10.08	0.71	Trading	46.7	46.0	(32.7)	7,250	7,050	7,050	7,000	6,900	7,200	7,300	7,350	7,250	7,000
BBNI	3,875	1.97	1.97	OverBought	76.5	48.6	(29.9)	3,925	3,775	3,825	3,775	3,725	3,925	3,975	4,025	3,900	3,750
BBRI	6,350	22.71	2.42	OverBought	66.7	55.1	37.9	6,500	6,150	6,300	6,200	6,100	6,500	6,600	6,700	6,500	6,100
BBTN	1,660	-0.60	2.47	OverBought	75.0	52.3	(14.1)	1,680	1,600	1,640	1,620	1,610	1,670	1,680	1,700	1,660	1,590
BDMN	6,200	12.73	5.08	StrongSell	89.5	55.7	(60.2)	6,350	5,850	6,100	5,950	5,900	6,300	6,350	6,500	6,200	5,800
BISI	1,560	-16.58	0.00	Trading	52.9	40.5	(34.4)	1,580	1,550	1,550	1,540	1,530	1,570	1,580	1,590	1,590	1,530
BMRI	7,200	11.63	1.41	StrongSell	85.0	57.8	58.8	7,400	6,950	7,150	7,050	7,000	7,300	7,350	7,450	7,250	6,900
BSDE	910	3.41	0.00	OverBought	75.0	53.4	6.7	920	905	900	885	870	930	945	960	930	880
BTEL	375	59.57	1.35	OverBought	75.0	52.8	(0.8)	378	368	365	355	350	380	385	395	375	360
BUMI	3,300	5.60	-1.49	OverSold	35.3	40.2	(11.5)	3,425	3,300	3,275	3,250	3,200	3,350	3,400	3,425	3,425	3,300
CTRA	415	18.57	3.75	OverBought	70.8	58.1	8.3	425	410	410	405	400	420	425	430	430	390
ELTY	161	0.00	-3.59	Trading	42.1	54.7	4.6	165	159	155	148	145	165	168	175	168	151
EXCL	6,150	17.14	-3.15	OverSold	25.9	44.1	42.6	6,500	6,100	6,000	5,800	5,550	6,450	6,700	6,900	6,600	6,050
GGRM	43,550	6.09	0.11	Trading	55.8	60.2	623.6	43,800	43,400	43,450	43,350	43,100	43,800	44,050	44,150	44,000	43,250
HEXA	6,550	-9.66	1.55	Trading	47.1	58.7	138.9	6,650	6,300	6,450	6,350	6,250	6,650	6,750	6,850	6,600	6,300
INCO	4,775	-4.02	-1.55	OverSold	33.3	44.3	(8.9)	4,925	4,750	4,750	4,725	4,650	4,850	4,925	4,950	4,900	4,775
INDF	5,400	9.09	1.89	Trading	47.1	45.5	(27.6)	5,500	5,350	5,350	5,250	5,200	5,500	5,550	5,650	5,500	5,250
INDY	4,300	-15.69	6.83	StrongSell	89.4	60.6	51.0	4,475	4,125	4,275	4,225	4,175	4,375	4,425	4,475	4,375	3,975
INTP	16,900	5.30	-0.88	Trading	58.3	50.9	70.3	17,350	16,850	16,750	16,550	16,350	17,150	17,350	17,550	17,400	16,750
ISAT	5,250	-3.67	-0.94	Trading	40.0	48.5	(16.7)	5,300	5,200	5,250	5,200	5,200	5,300	5,300	5,350	5,350	5,150
ITMG	47,000	-13.44	0.64	OverBought	77.6	50.7	(50.1)	48,100	46,550	46,450	45,900	45,300	47,600	48,200	48,750	47,800	46,000
JSMR	3,475	-2.11	1.46	TakeProfit	78.6	61.0	24.0	3,500	3,450	3,450	3,425	3,400	3,500	3,525	3,550	3,500	3,375
KLBF	3,575	7.52	5.93	OverBought	76.9	59.3	(15.0)	3,625	3,300	3,450	3,325	3,250	3,650	3,725	3,850	3,575	3,300
LSIP	2,425	-4.53	2.11	OverBought	75.0	53.7	2.8	2,475	2,375	2,400	2,375	2,350	2,450	2,475	2,500	2,450	2,325
MYOR	13,000	20.37	6.56	StrongSell	92.2	77.6	368.8	13,300	12,300	12,900	12,800	12,750	13,050	13,100	13,200	13,000	11,700
PGAS	4,050	-9.50	1.89	StrongSell	80.0	53.6	6.1	4,100	4,025	4,025	4,000	3,950	4,100	4,150	4,175	4,100	3,900
PTBA	21,250	-11.27	0.00	OverBought	71.7	46.1	(135.5)	21,800	21,100	21,050	20,850	20,650	21,450	21,650	21,850	21,650	20,850
RALS	850	-1.16	13.33	Trading Sell	90.0	70.2	9.5	865	745	20,870	20,870	20,870	20,870	20,870	20,870	860	750
SGRO	3,450	6.15	1.47	OverBought	63.6	57.3	34.0	3,500	3,400	3,425	3,400	3,375	3,475	3,500	3,525	3,450	3,375
SMCB	2,250	1.12	7.14	TakeProfit	76.2	60.4	7.7	2,300	2,100	2,200	2,150	2,100	2,300	2,350	2,400	2,275	2,050
SMGR	9,700	-1.52	0.52	OverBought	61.1	59.6	73.9	9,800	9,650	9,600	9,500	9,450	9,750	9,800	9,900	9,800	9,500
SMRA	1,140	5.56	4.59	StrongSell	84.2	52.4	(10.2)	1,170	1,090	1,130	1,110	1,100	1,160	1,170	1,190	1,150	1,080
TINS	2,600	-8.77	0.00	Trading Sell	30.0	39.2	(42.7)	2,625	2,600	2,575	2,550	2,525	2,625	2,650	2,675	2,650	2,575
TLKM	7,700	-3.75	0.65	StrongSell	80.0	56.0	54.1	7,800	7,600	7,650	7,600	7,550	7,750	7,800	7,850	7,700	7,550
UNTR	23,000	-5.35	3.84	StrongSell	95.0	59.9	141.1	23,500	22,000	22,800	22,600	22,450	23,150	23,300	23,500	23,050	21,850
UNVR	14,700	-8.41	-0.68	Trading Sell	23.5	31.8	(103.4)	14,950	14,700	14,650	14,600	14,450	14,850	15,000	15,050	15,050	14,700

S1 = Support 1 S2 = Support 2 S3 = Support 3
 R1 = Resisten 1 R2 = Resisten 2 R2 = Resisten 2
 STO = Stochastic Oscillator
 RSI = Relative Strength Index
 MACD = Moving Average Convergence Divergence
 H-5 = 5 hari sebelumnya

RESEARCH TEAM

Andrian Tanuwijaya	Equity Analyst	(andrian.tanuwijaya@trimegah.com)
Hanel Topada Era Tania	Equity Analyst	(hanel.tania@trimegah.com)
T Heldy Arifien	Technical Analyst	(heldy@trimegah.com)
Rovandi	Research Assistant	(rovandi@trimegah.com)

EQUITY CAPITAL MARKET TEAM

Nathanael Benny Prasetyo	Head of Retail ECM	(benny.prasetyo@trimegah.com)
Windra Djulnaily	Pluit, Jakarta	(windra.djulnaily@trimegah.com)
Ariawan Anwar	Artha Graha, Jakarta	(ariawan.anwar@trimegah.com)
Ferry Zabur	Kelapa Gading, Jakarta	(ferry.zabur@trimegah.com)
Wirjawan Joesoef	Mangga Dua, Jakarta	(iwan@trimegah.com)
Lukman Abdul Azis	Kebon Jeruk, Jakarta	(lukman@trimegah.com)
Tutik Suciati	Semarang, Jawa Tengah	(tuty.s@trimegah.com)
Sonny Muljadi	Surabaya, Jawa Timur	(sonny.muljadi@trimegah.com)
Ni Luh Ketut Sri Agustini	Denpasar, Bali	(sri.agustini@trimegah.com)
Philip Fernando Suwandi	Makassar, Sulawesi Selatan	(philip.fs@trimegah.com)
agus.jatmiko	Balikpapan, Kalimantan Timur	(agus.jatmiko@trimegah.com)
Asep Saepudin	Bandung, Jawa Barat	(asep.saepudin@trimegah.com)
Asep Saepudin	Cirebon, Jawa Barat	(asep.saepudin@trimegah.com)
Very Wijaya	Medan, Sumatera Utara	(very.wijaya@trimegah.com)
Tantie Rivi Watie	Pekanbaru, Riau	(tantierw@trimegah.com)
Agus Bambang Suseno	Solo, Jawa Tengah	(agus.suseno@trimegah.com)
Agus Bambang Suseno	Yogyakarta, Jawa Tengah	(agus.suseno@trimegah.com)
Donny Kristanto Setiadi	Palembang, Sumatra Selatan	(donny.kristanto@trimegah.com)
Sonny Muljadi	Malang, Jawa Timur	(sonny.muljadi@trimegah.com)

PT Trimegah Securities Tbk
18th Fl, Artha Graha Building
Jl. Jend. Sudirman Kav. 52-53
Jakarta 12190, INDONESIA
Tel : (6221) 2924 9088 Fax : (6221) 2924 9163

DISCLAIMER

This report has been prepared by PT Trimegah Securities Tbk on behalf of itself and its affiliated companies and is provided for information purposes only. Under no circumstances is it to be used or considered as an offer to sell, or a solicitation of any offer to buy. This report has been produced independently and the forecasts, opinions and expectations contained herein are entirely those of Trimegah Securities.

While all reasonable care has been taken to ensure that information contained herein is not untrue or misleading at the time of publication, Trimegah Securities makes no representation as to its accuracy or completeness and it should not be relied upon as such. This report is provided solely for the information of clients of Trimegah Securities who are expected to make their own investment decisions without reliance on this report. Neither Trimegah Securities nor any officer or employee of Trimegah Securities accept any liability whatsoever for any direct or consequential loss arising from any use of this report or its contents. Trimegah Securities and/or persons connected with it may have acted upon or used the information herein contained, or the research or analysis on which it is based, before publication. Trimegah Securities may in future participate in an offering of the company's equity securities.