

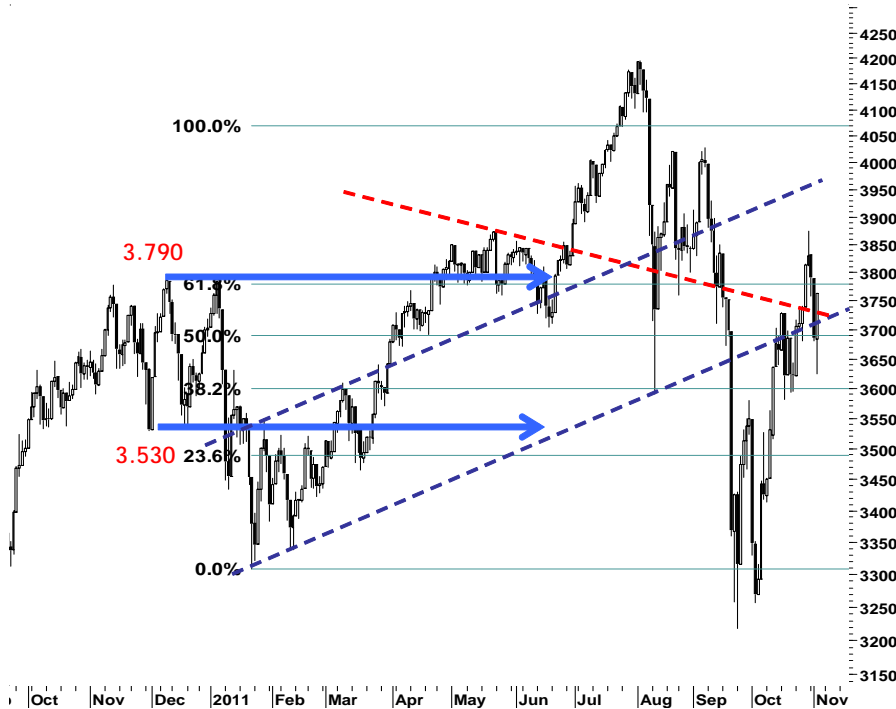
IHSG

3.763,0

78,0

2,12%

Ulisan Pasar



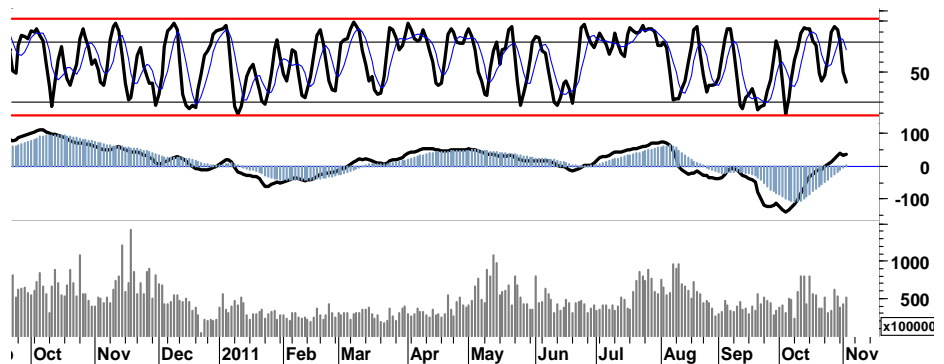
Faktor eksternal masih mendominasi pergerakan IHSG yang di perdagangan kemarin, membukukan penguatan 2,1% dan ditutup pada level 3.763 (area *fibonacci ratio* 50% & 62%). Kembali bergerak memotong support MA200, yang pada saat ini mencoba menopang rally penguatan pada basis support 3.720.

Aksi pembelian selektif telah menumbuhkan rasio volume perdagangan kemarin hingga 4%, dengan perlawanan terhadap tekanan sentimen di hari sebelumnya.

Pergerakan indeks acuan di Eropa DAX maupun CAC pun membukukan penguatan, masing-masing 2.3% dan 1.4%. Diikuti pula oleh DJI, S&P500 serta Nasdaq masing-masing sebesar 1,5%, 1,6% serta 1,3%.

Waspada aksi profit taking yang mungkin akan terjadi, ditengah belum munculnya signal kuat yang dapat membuat IHSG bertahan pada area positif trading. Signal positif distribusi yang berangsur memasuki zona hijau, diharapkan

mampu memberikan sedikit angin segar bagi IHSG untuk dapat bergerak menguji resistensi pada *fibonacci ratio* 62% di level 3.780. Dengan demikian nasabah memiliki peluang untuk merealisasikan profit, sebelum IHSG kembali kehilangan momentum serta kekuatannya sebagaimana tercermin pada *stochastic*(5d) yang akan menyeret menguji kekuatan support 3.680.



S1	S2	R1	R2
3,670	3,580	3,810	3,855

Saham Pilihan

Saham	Harga (Rp)	Rekomendasi	Stochastic	RSI	BB Top	BB Bottom	S1	S2	R1	R2
ASII	69,000	Trading	47.62	56.03	70,750	66,200	66,700	64,350	71,350	73,700
BBCA	7,950	OverBought	61.11	53.65	8,150	7,850	7,800	7,600	8,200	8,400
BBRI	6,700	Trading	54.84	58.13	6,900	6,550	6,500	6,250	6,950	7,200
BMRI	7,100	Trading	58.54	58.29	7,350	6,800	6,750	6,400	7,500	7,850
UNTR	24,300	OverSold	29.01	57.67	25,450	23,350	23,300	22,300	25,700	26,700
UNVR	15,800	OverSold	25.00	48.41	16,050	15,450	15,600	15,350	16,050	16,300



Minimnya signal positif pendukung mengakibatkan kenaikan ASII yang sempat membukukan kenaikan 3,8% kemarin, dikhawatirkan akan terganggu oleh aksi profit taking pada perdagangan har ini.

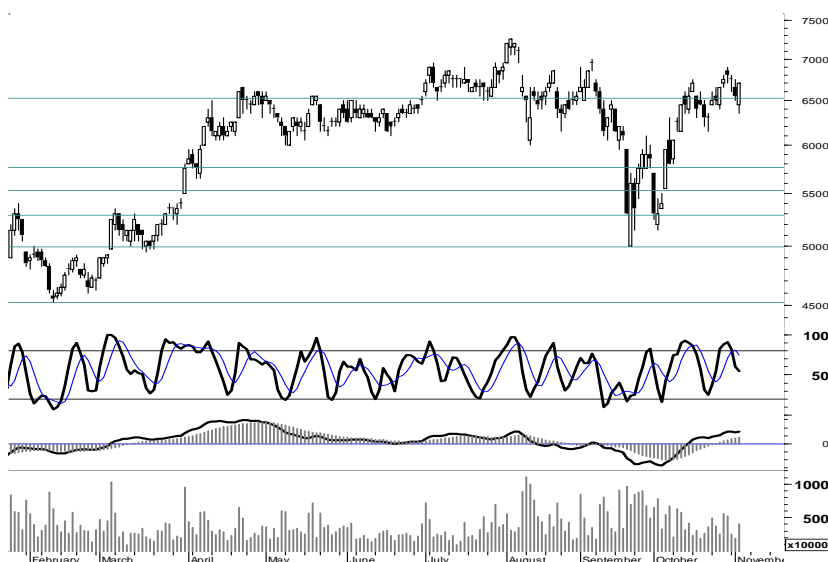
Waspadaai tekanan pembalikan arah, apabila ASII gagal melakukan penetrasi resistensi terdekat di level 71.250.

S1	S2	R1	R2
66,700	64,350	71,350	73,700



Support *uptrend channel* di level 7.800, sekalipun pada *safe-zone* namun waspadaai potensi pembalikan arah pada saat BBCA mencoba melakukan penetrasi resistensi harga pada ascending triangle di level 8.150/8.200. Dengan demikian akumulasi keuntungan yang mungkin telah diperoleh pada saat BBCA bergerak dalam rentang harga 7.900 - 8.100.

S1	S2	R1	R2
7,800	7,600	8,200	8,400



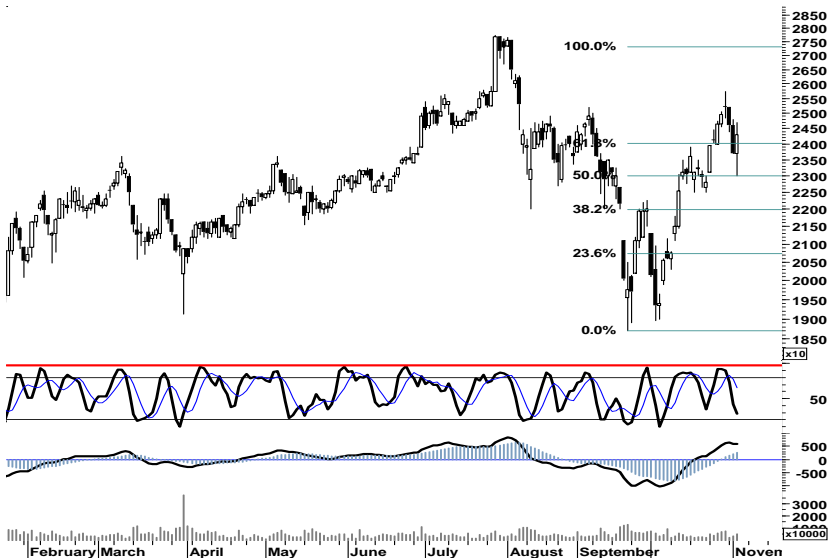
Minimnya signal positif penguatan pada BBRI, menempatkan kondisi perlawanan aksi beli yang terjadi kemarin akan terganggu dan waspadaai pembalikan arah pada saat BBRI bergerak menguji resistensi harga terdekat di 6.950.

S1	S2	R1	R2
6,500	6,250	6,950	7,200



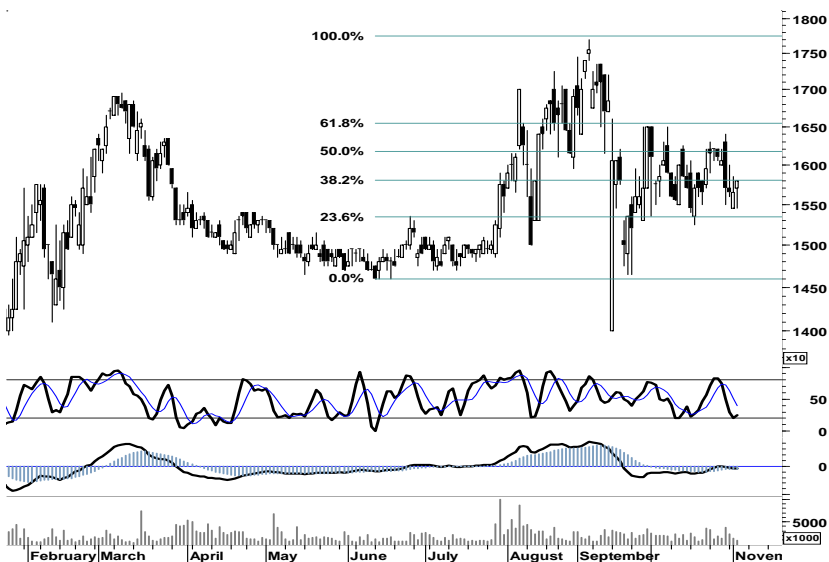
Sebagaimana 2 Bank (dalam *stock pick*) sebelumnya, waspadai gempuran aksi profit taking yang mungkin terjadi pada saat BMRI mencoba bergerak menguji resistensi 7.500.

S1	S2	R1	R2
6,750	6,400	7,500	7,850



Secara umum UNTR berada pada kondisi *Strong Bullish*, dimana perlawanan beli yang terjadi di akhir sesi perdagangan kemarin, diharapkan mampu memberikan ruang bagi MAPI untuk bertahan pada harga fibo ratio 62% di level 24.000. Dengan demikian pelemahan harga yang mungkin terjadi pada perdagangan hari ini, merupakan peluang untuk melakukan akumulasi kembali.

S1	S2	R1	R2
23,300	22,300	25,700	26,700



Potensi *golden-cross* pada area oversold Stochastic(5D), memberikan indikasi bahwa UNVR berpeluang untuk melanjutkan rally penguatan menuju target resistensi harga terdekat di level 16.200.

S1	S2	R1	R2
15,600	15,350	16,050	16,300

TRADE DATA

JCI (IHSG) 3,763.0 78.0 2.12%

YTD (Rp)	1.6%	Volume (m) :	5,703
YTD (USD)	1.5%	Nilai (Rpbn) :	3,328
Moving Avg 20day	3,657	Mkt Cap (Rpbn) :	3,439
Moving Avg 50day	3,690	Market P/E (x) :	16.2
Moving Avg 200day	3,721	Market Div. Yield (%) :	2.4

Indonesia & Sectors +/- (%) YTD (%)

MSCI Indonesia	4,746.9	127.1	2.75	4.41
JII	527.0	13.5	2.62	-1.10
LQ45	671.1	17.3	2.64	1.47
JAKFIN Index	505.0	9.1	0.02	8.22
JAKINFR Index	707.9	14.2	0.02	-13.59
JAKMINE Index	2,700.5	79.2	0.03	-17.52
JAKCONS Index	1,236.5	23.3	0.02	12.96
JAKTRAD Index	524.3	5.5	0.01	10.59
JAKMIND Index	1,231.7	39.7	0.03	27.37
JAKBIND Index	386.0	7.7	0.02	-0.33
JAKPROP Index	214.4	4.5	0.02	5.58
JAKAGRI Index	2,128.5	26.4	0.01	-6.82

Regional Indices +/- (%) YTD (%)

MXWO	MSCI Word	1,189.3	14.5	1.24	-7.09
SPX	S&P 500	1,237.9	19.6	1.61	-1.57
US					
Dow Jones Industrial		11,836.0	178.1	1.53	2.23
Nasdaq	US	2,640.0	33.0	1.27	-0.49
Europe					
EURO 50	Europe	237.2	2.2	0.92	-13.99
FTSE	London	5,484.1	62.5	1.15	-7.05
DAX	German	5,965.6	131.1	2.25	-13.72
CAC	France	3,110.6	42.3	1.38	-18.25
SMI	Swiss	5,611.1	22.5	0.40	-12.82
BRIC					
BOVESPA	Brazil	57,322.8	0.0	0.00	-17.29
MICEX	Russia	1,488.9	32.6	2.24	-11.80
SENSEX	India	17,464.9	-16.0	-0.09	-14.84
NIFTY	India	5,258.5	0.5	0.01	-14.28
SHCOMP	China	2,504.1	34.1	1.38	-10.82
SZCOMP	China	1,060.2	18.7	1.79	-17.87

Commodities +/- (%) YTD (%)

CRB Index	316.06	0.8	0.26	-5.03
Oil & Gas				
Crude Oil	92.51	0.3	0.35	1.24
Natural Gas	3.75	-0.0	-0.85	-14.89
COAL (Rotterdam)	116.10	-0.1	-0.09	-11.64
COAL (Amsterdam)	115.80	0.4	0.35	-8.06
COAL (Australia,wk)	116.45	0.0	0.00	-4.86
Industrial Metals				
Alumunium	2,124.00	18.0	0.85	-13.63
Nickel	18,580	-20	-0.11	-24.93
Tin	22,000	225	1.03	-18.22
Precious Metal				
Gold	1,729.60	17.8	1.04	21.68
Silver	33.94	1.2	3.70	9.81
Soft Commodities				
CPO (Malaysia)	2,962.00	37.0	1.26	-22.34
CPO (Netherlands)	1,027.50	12.5	1.23	-20.04
Rubber	3,673.29	-46.2	-1.24	-26.44
Corn	645.00	-9.3	-1.41	2.54
Wheat	623.50	-6.5	-1.03	-21.50
Soybeans	1,202.75	0.3	0.02	-13.70
Rice (Indonesia)	7,700.00	0.0	0.00	8.45

Developed ASIA

Nikkei	Japan	8,640.4	-195.1	-2.21	-15.53
TPX	Japan	738.6	-15.9	-2.11	-17.83
HIS	Hong kong	19,733.7	363.8	1.88	-14.33
KOSPI	S.Korea	1,898.0	-11.6	-0.61	-7.46
TAIEX	Taiwan	7,598.5	-23.6	-0.31	-15.31
FSSTI	Singapore	2,834.8	45.4	1.63	-11.14

ASEAN

SET	Thailand	965.8	9.2	0.96	-6.48
PCOMP	Philippines	4,260.4	-73.3	-1.69	1.41
KLCI	Malaysia	1,471.0	-4.7	-0.32	-3.16
VNINDEX	Vietnam	407.8	-6.0	-1.46	-15.86

Currency +/- (%) YTD (%)

EURUSD	Euro	1.375	0.004	0.32	2.71
GBPUSD	United Kingdom	1.595	0.000	0.00	2.16
USDCHF	Switzerland	0.884	-0.003	-0.34	-5.46
USDCAD	Canada	1.014	-0.007	-0.67	1.56
AUDUSD	Australia	1.035	0.002	0.17	1.11
NZDUSD	New Zealand	0.791	-0.004	-0.48	1.44
USDJPY	Japan	78.1	-0.320	-0.41	-3.78
USDCNY	China	6.356	0.001	0.01	-3.80
USDHKD	Hongkong	7.770	-0.001	-0.02	-0.04
USDSGD	Singapore	1.274	-0.001	-0.06	-0.70
Rupiah	Indonesia	8,975.0	30.000	0.34	-0.23

Winners

Stock	Price	(%)	Stock	Price	(%)
BUMI	2,325	8.14	BACA	131	-18.13
CPIN	2,675	7.00	KPIG	590	-15.71
INDF	5,250	5.00	DSSA	12,300	-8.21
BMRI	7,100	4.41	BNII	420	-2.33
ASII	69,000	3.76	MEDC	2,325	-2.11
PGAS	3,025	3.42	LPKR	620	-1.59
UNTR	24,300	2.53	PNBN	660	-1.49
BBRI	6,700	2.29	ISAT	5,100	-0.97
TLKM	7,550	2.03	SMAR	6,350	-0.78
GGRM	58,000	1.93	AALI	21,000	-0.47

Losers

Value

Value (Rpbn)	Volume (Lot)	Freq (x)
BORN 663,388	BORN 1,556,699	BORN 10,013
BMRI 291,402	ENRG 1,515,821	GDST 5,417
BBRI 263,157	ELTY 666,922	ENRG 4,810
BUMI 257,298	BNBR 574,151	INAF 4,747
ASII 191,082	ASRI 454,572	ASRI 3,701
ADRO 161,852	KIJA 396,056	BBRI 3,357
TLKM 129,262	BHIT 258,798	PUDP 3,092
ENRG 119,098	PNLF 246,295	BUMI 3,055
BBNI 115,299	BUMI 229,644	ANTM 2,945
BBCA 114,108	BKSL 222,031	ADRO 2,889

Code	Last	Ytd Chg(%)	H-5 Chg (%)	Rekomendasi	STO	RSI	MACD	Bollinger Band		Support			Resistance			H-5	
								Top	Bottom	1	2	3	1	2	3	Highest	Lowest
AALI	21,000	-21.64	2.94	Trading	54.1	58.9	398.6	21,600	20,750	20,600	20,200	19,850	21,350	21,700	22,100	22,200	20,000
ACES	3,400	19.30	0.00	StrongSell	91.4	54.6	16.6	3,500	3,275	3,225	3,050	2,925	3,525	3,650	3,825	3,450	3,125
ADRO	2,050	-23.36	2.50	OverSold	34.7	58.0	55.5	2,150	1,950	1,975	1,875	1,825	2,125	2,175	2,275	2,150	1,930
AISA	670	-14.10	6.35	OverBought	73.9	50.9	(9.7)	690	625	650	630	620	680	690	710	680	600
ANTM	1,730	-30.10	1.17	OverSold	37.0	53.2	26.5	1,850	1,650	1,670	1,610	1,570	1,770	1,810	1,870	1,850	1,640
ASII	69,000	26.84	0.88	Trading	47.6	56.0	1,077.5	70,750	66,200	66,700	64,350	63,200	70,200	71,350	73,700	70,000	65,500
BBCA	7,950	23.26	-0.62	OverBought	61.1	53.6	67.2	8,150	7,850	7,800	7,600	7,500	8,100	8,200	8,400	8,100	7,700
BBNI	4,000	5.26	-0.62	Trading	43.3	57.3	77.1	4,100	3,925	3,900	3,775	3,725	4,075	4,125	4,250	4,125	3,825
BBRI	6,700	29.47	0.75	Trading	54.8	58.1	153.1	6,900	6,550	6,500	6,250	6,150	6,850	6,950	7,200	6,900	6,350
BDMN	5,000	-9.09	1.01	OverSold	34.3	55.5	63.1	5,050	4,900	4,850	4,700	4,600	5,100	5,200	5,350	5,150	4,800
BISI	990	-47.06	-6.60	OverSold	21.4	46.9	(8.7)	1,070	930	950	905	880	1,020	1,045	1,090	1,100	930
BMRI	7,100	10.08	3.65	Trading	58.5	58.3	183.2	7,350	6,800	6,750	6,400	6,200	7,300	7,500	7,850	7,300	6,550
BSDE	920	4.55	0.00	Trading	45.0	52.2	7.0	935	900	890	855	840	940	955	990	950	870
BTEL	280	19.15	-3.45	Accumulate	36.8	34.1	(10.6)	297	274	274	267	264	284	287	294	305	270
BUMI	2,325	-25.60	3.33	Trading	42.6	54.1	24.5	2,525	2,125	2,150	1,950	1,850	2,450	2,550	2,750	2,500	2,050
BWPT	1,180	-9.92	-3.28	OverSold	25.0	58.1	25.0	1,230	1,140	1,150	1,120	1,100	1,200	1,220	1,250	1,230	1,130
ELTY	118	-26.71	-0.84	OverSold	25.0	49.7	(1.0)	125	109	111	104	100	122	126	133	126	108
EXCL	5,100	-2.86	-2.86	StrongBuy	14.6	51.2	42.0	5,500	4,650	4,950	4,800	4,700	5,200	5,300	5,450	5,700	4,850
GGRM	58,000	41.29	-0.43	Trading	42.3	55.7	958.3	60,350	56,050	56,650	55,300	54,550	58,750	59,500	60,850	61,150	55,100
HEXA	8,600	18.62	13.91	StrongSell	93.8	72.6	150.8	8,850	7,600	8,250	7,900	7,700	8,800	9,000	9,350	8,650	7,450
HRUM	8,300	-12.17	5.73	Trading	44.4	60.2	153.8	8,450	7,700	7,850	7,400	7,150	8,550	8,800	9,250	8,500	7,600
INCO	3,600	-27.64	8.27	OverBought	69.1	59.9	90.1	3,800	3,425	3,475	3,325	3,250	3,700	3,775	3,925	3,725	3,225
INDF	5,250	6.06	-6.25	OverSold	23.9	46.0	(3.5)	5,700	4,850	5,000	4,750	4,650	5,400	5,500	5,750	5,750	4,875
INDY	2,650	-48.04	1.92	OverSold	28.3	50.0	15.7	3,000	2,450	2,550	2,450	2,375	2,725	2,800	2,900	3,050	2,525
INTP	15,400	-4.05	-0.65	Trading	54.4	56.0	508.4	16,650	14,800	14,850	14,300	13,950	15,750	16,100	16,650	16,350	14,650
ISAT	5,100	-6.42	0.99	Trading	50.0	50.2	(7.7)	5,400	5,050	5,050	5,000	4,950	5,150	5,200	5,250	5,450	4,950
ITMG	44,800	-17.50	8.47	StrongSell	81.1	60.0	783.8	45,950	42,700	43,400	41,950	41,250	45,550	46,250	47,700	45,100	40,700
JSMR	3,925	10.56	0.64	Trading	40.7	55.2	2.0	4,000	3,750	3,775	3,600	3,525	4,025	4,100	4,275	3,975	3,675
KLBF	3,425	3.01	-1.44	OverSold	34.8	52.3	30.5	3,550	3,350	3,350	3,275	3,225	3,475	3,525	3,600	3,550	3,300
LSIP	2,200	-13.39	3.53	Trading	53.1	57.1	32.5	2,275	2,125	2,100	2,000	1,925	2,275	2,350	2,450	2,300	2,025
MAPI	4,900	76.58	0.00	Trading	52.4	57.9	122.3	5,050	4,800	4,825	4,725	4,675	4,975	5,025	5,125	5,150	4,625
PGAS	3,025	-32.40	4.31	Trading	59.0	59.1	73.2	3,100	2,900	2,925	2,825	2,775	3,075	3,125	3,225	3,100	2,725
PTBA	18,200	-24.01	5.51	Trading	55.3	56.8	372.8	18,900	17,550	17,600	16,950	16,600	18,600	18,950	19,600	18,800	17,200
RALS	630	-26.74	-5.97	Trading Sell	27.8	36.4	(16.4)	690	615	20,870	20,870	20,870	20,870	20,870	20,870	690	600
SGRO	3,050	-6.15	3.39	Trading	45.7	54.3	7.5	3,100	2,975	2,950	2,850	2,775	3,125	3,200	3,300	3,175	2,875
SMCB	1,940	-12.81	3.74	OverBought	67.7	58.9	24.4	1,960	1,910	1,890	1,840	1,810	1,970	2,000	2,050	1,960	1,850
SMGR	9,050	-8.12	-1.09	Trading	47.5	53.3	190.8	9,600	8,800	8,800	8,500	8,300	9,300	9,500	9,800	9,550	8,700
SMRA	1,160	7.41	1.75	StrongSell	95.0	57.2	15.8	1,190	1,140	1,150	1,140	1,130	1,170	1,180	1,190	1,170	1,090
TINS	1,980	-30.53	4.76	Trading	55.0	56.6	18.9	2,050	1,900	1,900	1,810	1,770	2,030	2,070	2,160	2,050	1,850
TLKM	7,550	-5.63	2.03	Trading	55.6	59.1	29.3	7,600	7,350	7,400	7,250	7,100	7,700	7,850	8,000	7,650	7,300
UNTR	24,300	0.00	-1.42	OverSold	29.0	57.7	597.6	25,450	23,350	23,300	22,300	21,600	25,000	25,700	26,700	25,750	23,000
UNVR	15,800	-1.56	-1.86	OverSold	25.0	48.4	(61.1)	16,050	15,450	15,600	15,350	15,250	15,950	16,050	16,300	16,400	15,450

S1 = Support 1 S2 = Support 2 S3 = Support 3
 R1 = Resisten 1 R2 = Resisten 2 R2 = Resisten 2
 STO = Stochastic Oscillator
 RSI = Relative Strength Index
 MACD = Moving Average Convergence Divergence
 H-5 = 5 hari sebelumnya

RESEARCH TEAM

Andrian Tanuwijaya	Equity Analyst	(andrian.tanuwijaya@trimegah.com)
Hanel Topada Era Tania	Equity Analyst	(hanel.tania@trimegah.com)
Paul Raymond Widjaja	Equity Analyst	(paul.widjaja@trimegah.com)
Michele Gabriela	Equity Analyst	(michele.gabriela@trimegah.com)
T Hedy Arifien	Technical Analyst	(hedy@trimegah.com)
Rovandi	Research Assistant	(rovandi@trimegah.com)

EQUITY CAPITAL MARKET TEAM

Nathanael Benny Prasetyo	Head of Retail ECM	(benny.prasetyo@trimegah.com)
Windra Djulnaily	Pluit, Jakarta	(windra.djulnaily@trimegah.com)
Ariawan Anwar	Artha Graha, Jakarta	(ariawan.anwar@trimegah.com)
Ferry Zabur	Kelapa Gading, Jakarta	(ferry.zabur@trimegah.com)
Wirjawan Joesoef	Mangga Dua, Jakarta	(iwan@trimegah.com)
Lukman Abdul Azis	Kebon Jeruk, Jakarta	(lukman@trimegah.com)
Untung Wijaya	Semarang, Jawa Tengah	(untung.wijaya@trimegah.com)
Sonny Muljadi	Surabaya, Jawa Timur	(sonny.muljadi@trimegah.com)
Ni luh Ketut Sri Agustini	Denpasar, Bali	(sri.agustini@trimegah.com)
Philip Fernando Suwandi	Makassar, Sulawesi Selatan	(philip.fs@trimegah.com)
agus.jatmiko	Balikpapan, Kalimantan Timur	(agus.jatmiko@trimegah.com)
Asep Saepudin	Bandung, Jawa Barat	(asep.saepudin@trimegah.com)
Ariffianto	Cirebon, Jawa Barat	(ariffianto@trimegah.com)
Very Wijaya	Medan, Sumatera Utara	(very.wijaya@trimegah.com)
Tantie Rivi Watie	Pekanbaru, Riau	(tantierw@trimegah.com)
Agus Bambang Suseno	Solo, Jawa Tengah	(agus.suseno@trimegah.com)
Untung Wijaya	Yogyakarta, Jawa Tengah	(untung.wijaya@trimegah.com)
Donny Kristanto Setiadi	Palembang, Sumatra Selatan	(donny.kristanto@trimegah.com)
Rr. Putri Ayu Erikusuma	Malang, Jawa Timur	(putri.ayu@trimegah.com)

PT Trimegah Securities Tbk
18th Fl, Artha Graha Building
Jl. Jend. Sudirman Kav. 52-53
Jakarta 12190, INDONESIA
Tel : (6221) 2924 9088 Fax : (6221) 2924 9163

DISCLAIMER

This report has been prepared by PT Trimegah Securities Tbk on behalf of itself and its affiliated companies and is provided for information purposes only. Under no circumstances is it to be used or considered as an offer to sell, or a solicitation of any offer to buy. This report has been produced independently and the forecasts, opinions and expectations contained herein are entirely those of Trimegah Securities.

While all reasonable care has been taken to ensure that information contained herein is not untrue or misleading at the time of publication, Trimegah Securities makes no representation as to its accuracy or completeness and it should not be relied upon as such. This report is provided solely for the information of clients of Trimegah Securities who are expected to make their own investment decisions without reliance on this report. Neither Trimegah Securities nor any officer or employee of Trimegah Securities accept any liability whatsoever for any direct or consequential loss arising from any use of this report or its contents. Trimegah Securities and/or persons connected with it may have acted upon or used the information herein contained, or the research or analysis on which it is based, before publication. Trimegah Securities may in future participate in an offering of the company's equity securities.