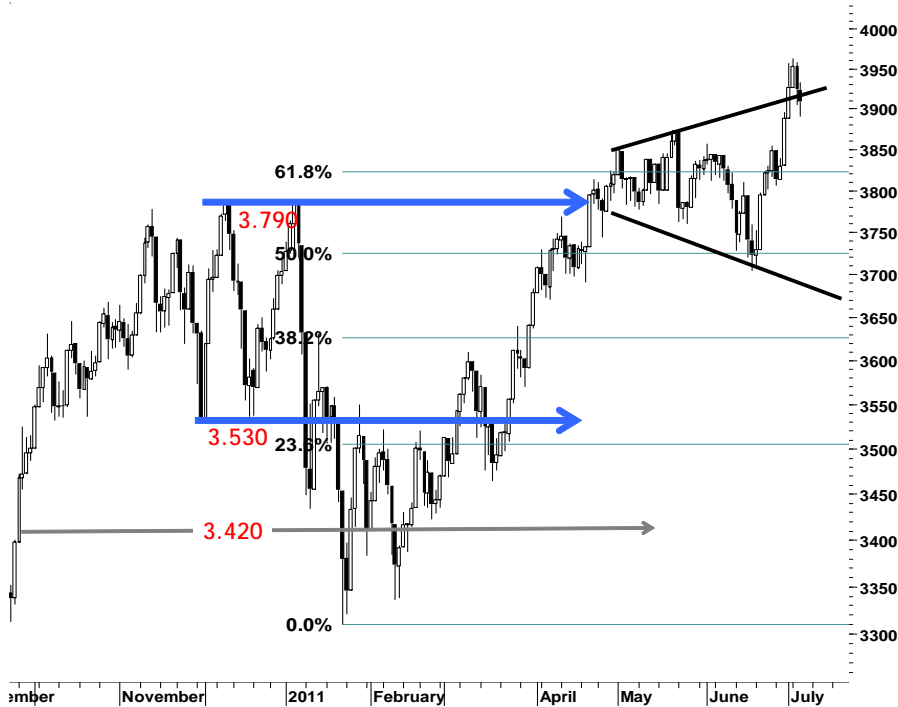


IHSG 3.909,0 -15,2 -0,39%

Ulisan Pasar



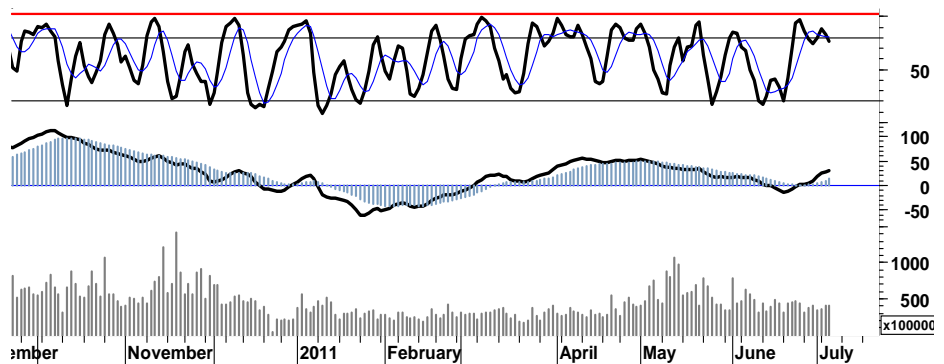
Berlanjutnya tekanan jual terhadap saham-saham unggulan dengan kapitalisasi besar, kembali menggulung kembali IHSG dengan pelemahan sebesar 0,4% dan ditutup pada level 3.909 seiring anjloknya sejumlah indeks bursa-bursa utama Asia yang juga mencatat nilai koreksi rata-rata 0,8% pada perdagangan kemarin.

Dominasi tekanan jual menekan pergerakan IHSG keluar dari zona overbought, memasuki konsolidasi area dalam rentang harga 3.850 - 3.950.

Dalam pertimbangan kondisi dimana perdagangan yang berakhir dalam area pivot support harga 3.910, besarnya peluang bagi IHSG untuk melakukan swing positif sama besarnya dengan potensi berlanjutnya tekanan jual.

Signal positif arus distribusi yang mencoba bertahan dalam zona hijau merupakan salah satu katalis bagi IHSG untuk mencoba bertahan pada area 3.900.

Dengan tetap mewaspadaai probabilita tekanan jual yang akan menyeret IHSG menguji support 3.850 kembali apabila IHSG gagal bergerak kembali di atas support 3.920, kami perkirakan IHSG akan mencoba bergerak dalam rentang harga yang serupa 3.875-3.930



S1	S2	R1	R2
3,890	3,870	3,930	3,955

Saham Pilihan

Saham	Harga (Rp)	Rekomendasi	Stochastic	RSI	BB Top	BB Bottom	S1	S2	R1	R2
ADRO	2,525	Trading Sell	72.73	65.38	2,575	2,475	2,500	2,450	2,650	2,700
AKRA	2,175	Trading	50.00	77.28	2,200	2,125	2,150	2,100	2,250	2,300
INDY	3,700	Spec. Buy	28.57	32.67	3,900	3,650	3,675	3,650	3,800	3,825
INTP	16,550	OverSold	20.00	43.37	17,350	16,350	16,450	16,300	17,000	17,150
SMRA	1,140	Trading	58.82	45.84	1,180	1,130	1,110	1,080	1,180	1,210
TINS	2,550	Trading	83.33	51.97	2,600	2,500	2,550	2,525	2,575	2,600



Secara umum ADRO masih berada dalam kondisi Bullish dan mencoba bertahan dalam zona hijau trading.

Untuk dapat bertahan dalam kondisi tersebut, support psikologis 2.450-2.475 diharapkan mampu menahan laju tekanan yang masih akan membayangi pergerakan ADRO hari ini.

ADRO diperkirakan akan mencoba bertahan dalam area konsolidasi 2.450 - 2.650.

S1	S2	R1	R2
2,500	2,450	2,650	2,700



Agar dapat bertahan pada area konsolidasi, support harga 2.100 diharapkan mampu menjadi basis support AKRA.

Signal positif MACD serta indikasi golden-cross pada area trading stochastic, membuka peluang AKRA untuk bergerak dalam rentang harga 2.100-2.200.

S1	S2	R1	R2
2,150	2,100	2,250	2,300



Doji yang terbentuk di akhir tekanan pelemahan perdagangan kemarin, membuka peluang bagi INDY untuk melakukan reversal dengan basis support harga 3.650.

Perketat stop-loss harga di level 3.600, apabila INDY gagal berbalik arah pada support 3.650.

S1	S2	R1	R2
3,675	3,650	3,800	3,825



Terbatasnya ruang pelemahan yang tercermin pada stochastic, membuka peluang INTP berbalik arah pada basis harga 16.300.

Akumulasi terhadap INTP dapat dilakukan pada saat uji support dalam rentang harga 16.300-16.450.

S1	S2	R1	R2
16,450	16,300	17,000	17,150



Secara umum, SMRA masih cukup kuat bertahan dalam uptrend channel dalam rentang 1.100-1.200.

Signal positif golden-cross yang tercipta kemarin, membuka peluang bagi SMRA untuk bergerak dalam rentang harga 1.110-1.180.

S1	S2	R1	R2
1,110	1,080	1,180	1,210



Ditengah rawanya tekanan serta aksi profit taking pada area overbought 83,3%, alur distribusi yang mencoba merambah zona hijau diharapkan mampu mempertahankan posisi TINS bergerak positif dengan basis support pada retracement 50% di level 2.525.

Pada perdagangan hari ini TINS berpeluang gerak dalam rentang harga 2.525 - 2.575.

S1	S2	R1	R2
2,550	2,525	2,575	2,600

TRADE DATA

JCI (IHSG) 3,909.0 -15.2 -0.39%

YTD (Rp)	5.5%	Volume (m) :	4,013
YTD (USD)	10.9%	Nilai (Rpbn) :	3,328
Moving Avg 20day	3,823	Mkt Cap (Rpbn) :	3,439
Moving Avg 50day	3,820	Market P/E (x) :	16.2
Moving Avg 200day	3,644	Market Div. Yield (%) :	2.4

Indonesia & Sectors +/- (%) YTD (%)

MSCI Indonesia	4,854.9	-29.6	-0.61	6.78
JII	539.6	-2.3	-0.42	1.27
LQ45	692.6	-4.3	-0.62	4.72
JAKFIN Index	510.5	-3.1	-0.01	9.40
JAKINFR Index	763.4	-3.7	-0.00	-6.81
JAKMINE Index	3,279.7	2.5	0.00	0.17
JAKCONS Index	1,184.3	-4.7	-0.00	8.19
JAKTRAD Index	531.7	-2.5	-0.00	12.16
JAKMIND Index	1,176.4	-16.5	-0.01	21.65
JAKBIND Index	408.3	3.3	0.01	5.43
JAKPROP Index	208.0	-0.6	-0.00	2.42
JAKAGRI Index	2,308.8	-7.5	-0.00	1.07

Commodities +/- (%) YTD (%)

CRB Index	340.20	-1.4	-0.42	2.22
Oil & Gas				
Crude Oil	96.65	-0.2	-0.25	5.77
Natural Gas	4.22	-0.1	-3.35	-4.27
COAL (Rotterdam)	124.10	-1.1	-0.84	-5.56
COAL (Amsterdam)	123.50	-1.8	-1.44	-1.95
COAL (Australia,wk)	120.40	0.0	0.00	-1.63
Industrial Metals				
Alumunium	2,541.25	-19.5	-0.76	3.33
Nickel	23,380	80	0.34	-5.54
Tin	26,745	395	1.50	-0.58
Precious Metal				
Gold	1,529.20	16.5	1.09	7.58
Silver	35.92	0.5	1.43	16.20
Soft Commodities				
CPO (Malaysia)	3,038.00	-12.0	-0.39	-20.35
CPO (Netherlands)	1,075.00	7.5	0.70	-16.34
Rubber	4,868.37	88.6	1.85	-2.51
Corn	618.75	-6.8	-1.08	-1.63
Wheat	627.00	-8.5	-1.34	-21.06
Soybeans	1,322.25	0.0	0.00	-5.13
Rice (Indonesia)	6,950.00	0.0	0.00	-2.11

Winners

Stock	Price	(%)	Stock	Price	(%)
TBLA	660	11.86	BBNI	3,800	-1.94
JPFA	5,050	8.60	ASII	65,100	-1.81
CPIN	2,275	7.06	INDF	5,700	-1.72
MYOR	13,750	6.18	BDMN	5,850	-1.68
BTPN	3,275	3.15	GGRM	48,050	-1.64
ADRO	2,525	1.00	BBRI	6,600	-1.49
BYAN	23,750	0.85	PGAS	3,975	-1.24
BUMI	3,000	0.84	UNTR	24,650	-1.20
BMRI	7,250	0.69	TLKM	7,150	-0.69
UNVR	14,850	0.34	BBCA	7,800	-0.64

Losers

Stock	Price	(%)	Stock	Price	(%)
ASII	170,890		KIJA	1,202,672	
BBRI	164,603		SIPD	490,672	
ADRO	157,357		BKSL	355,450	
KLBF	116,085		ADMG	281,008	
SMGR	107,883		LCGP	221,544	
BMRI	102,132		COWL	214,874	
BUMI	99,771		ENRG	214,817	
CPIN	96,028		TBLA	209,278	
KIJA	93,992		TRAM	173,858	
JPFA	91,377		BNBR	160,609	
LCGP	4,024		BULL	2,018	

Regional Indices +/- (%) YTD (%)

MXWO	MSCI Word	1,342.0	-4.0	-0.29	4.84
SPX	S&P 500	1,339.2	1.3	0.10	6.49
US					
Dow Jones Industrial		12,626.0	56.1	0.45	9.06
Nasdaq	US	2,834.0	8.3	0.29	6.83
Europe					
EURO 50	Europe	274.8	-0.8	-0.30	-0.37
FTSE	London	6,002.9	-21.1	-0.35	1.75
DAX	German	7,431.2	-8.3	-0.11	7.48
CAC	France	3,961.3	-17.5	-0.44	4.11
SMI	Swiss	6,179.4	-63.7	-1.02	-3.99
BRIC					
BOVESPA	Brazil	62,565.5	-473.3	-0.75	-9.72
MICEX	Russia	1,705.4	-4.6	-0.27	1.03
SENSEX	India	18,727.0	-17.6	-0.09	-8.69
NIFTY	India	5,625.5	-6.7	-0.12	-8.30
SHCOMP	China	2,810.5	-5.9	-0.21	0.09
SZCOMP	China	1,200.6	4.8	0.40	-6.99

Developed ASIA

Nikkei	Japan	10,082.5	110.0	1.10	-1.43
TPX	Japan	873.5	8.3	0.96	-2.81
HIS	Hong kong	22,517.6	-230.4	-1.01	-2.25
KOSPI	S.Korea	2,171.2	9.4	0.44	5.86
TAIEX	Taiwan	8,824.4	40.0	0.46	-1.65
FSSTI	Singapore	3,114.7	-15.0	-0.48	-2.36

ASEAN

SET	Thailand	1,072.7	-11.9	-1.10	3.87
PCOMP	Philippines	4,398.8	-40.9	-0.92	4.70
KLCI	Malaysia	1,591.3	9.5	0.60	4.77
VNINDEX	Vietnam	428.3	-2.7	-0.63	-11.63

Currency +/- (%) YTD (%)

EURUSD	Euro	1.432	-0.011	-0.76	6.99
GBPUSD	United Kingdom	1.600	-0.006	-0.35	2.51
USDCHF	Switzerland	0.839	-0.001	-0.15	-10.27
USDCAD	Canada	0.965	0.002	0.20	-3.28
AUDUSD	Australia	1.070	0.001	0.07	4.57
NZDUSD	New Zealand	0.827	0.002	0.23	6.00
USDJPY	Japan	80.9	-0.160	-0.20	-0.26
USDCNY	China	6.467	-0.001	-0.02	-2.12
USDHKD	Hongkong	7.782	0.002	0.02	0.12
USDSGD	Singapore	1.228	0.000	0.02	-4.32
Rupiah	Indonesia	8,544.0	11.000	0.13	-5.02

Value

Value (Rpbn)	Volume (Lot)	Freq (x)
ASII 170,890	KIJA 1,202,672	LCGP 4,024
BBRI 164,603	SIPD 490,672	KIJA 3,529
ADRO 157,357	BKSL 355,450	TBLA 3,212
KLBF 116,085	ADMG 281,008	MNCN 3,063
SMGR 107,883	LCGP 221,544	ADMG 2,987
BMRI 102,132	COWL 214,874	COWL 2,943
BUMI 99,771	ENRG 214,817	CPIN 2,695
CPIN 96,028	TBLA 209,278	JPFA 2,326
KIJA 93,992	TRAM 173,858	BUMI 2,182
JPFA 91,377	BNBR 160,609	BULL 2,018

Code	Last	Ytd Chg(%)	H-5 Chg (%)	Rekomendasi	STO	RSI	MACD	Bollinger Band		Support			Resistance			H-5	
								Top	Bottom	1	2	3	1	2	3	Highest	Lowest
AALI	23,100	-13.81	0.65	Trading	41.8	47.1	(47.1)	23,500	23,000	22,950	22,750	22,500	23,400	23,650	23,850	23,750	22,800
ACES	3,000	5.26	0.00	OverBought	66.7	59.9	59.7	3,025	3,000	3,000	3,000	3,000	3,000	3,000	3,000	3,100	2,800
ADRO	2,525	-5.61	5.21	Trading Sell	72.7	65.4	34.9	2,575	2,475	2,500	2,450	2,400	2,600	2,650	2,700	2,600	2,375
AKRA	2,175	27.94	2.35	Trading	50.0	77.3	105.7	2,200	2,125	2,150	2,100	2,075	2,225	2,250	2,300	2,200	2,100
ANTM	2,150	-13.13	2.38	StrongSell	81.8	55.6	(8.8)	2,200	2,100	2,150	2,125	2,125	2,175	2,175	2,200	2,150	2,050
ASII	65,100	19.67	5.77	Trading Sell	74.0	63.4	1,860.4	69,350	62,850	64,700	64,250	63,450	65,950	66,750	67,200	68,500	61,500
BBCA	7,800	20.93	4.70	StrongSell	82.4	69.0	157.5	8,000	7,700	7,650	7,500	7,400	7,900	8,000	8,150	7,950	7,350
BBNI	3,800	0.00	0.66	Trading	55.6	48.4	3.8	3,925	3,800	3,775	3,750	3,700	3,850	3,900	3,925	3,950	3,750
BBRI	6,600	27.54	3.13	OverBought	63.6	55.3	83.9	7,000	6,450	6,550	6,450	6,400	6,700	6,750	6,850	6,950	6,350
BBTN	1,710	2.40	1.79	Trading	57.6	56.4	19.4	1,780	1,690	1,700	1,690	1,670	1,730	1,750	1,760	1,780	1,670
BDMN	5,850	6.36	-0.85	OverSold	36.8	41.1	(24.6)	6,150	5,850	5,800	5,750	5,700	5,900	5,950	6,000	6,150	5,800
BISI	1,310	-29.95	0.77	Trading Buy	29.6	38.5	(63.5)	1,330	1,240	1,270	1,230	1,200	1,340	1,370	1,410	1,340	1,240
BMRI	7,250	12.40	2.84	OverBought	60.0	58.5	36.9	7,350	7,150	7,200	7,150	7,100	7,300	7,350	7,400	7,350	7,000
BSDE	860	-2.27	-3.37	OverSold	23.5	42.1	(4.5)	915	845	855	850	835	875	890	895	920	860
BTEL	355	51.06	-2.74	Trading	41.7	40.1	(2.3)	365	353	352	349	347	357	359	362	370	350
BUMI	3,000	-4.00	0.00	Trading	43.8	37.7	(103.1)	3,025	2,950	2,975	2,950	2,925	3,025	3,050	3,075	3,050	2,925
CTRA	460	31.43	10.84	StrongSell	100.0	67.8	6.6	470	421	450	440	435	465	470	480	460	410
ELTY	148	-8.07	-0.67	Trading	46.7	45.7	(2.0)	151	148	147	145	143	151	153	155	152	147
EXCL	6,000	14.29	-1.64	OverSold	29.6	43.7	(56.8)	6,200	5,900	6,000	5,950	5,900	6,100	6,150	6,200	6,300	5,850
GGRM	48,050	17.05	0.84	Trading	43.4	59.8	1,268.9	50,250	47,400	47,300	46,550	45,700	48,900	49,750	50,500	51,000	46,500
HEXA	7,650	5.52	17.69	StrongSell	89.7	76.1	282.4	8,100	6,900	7,550	7,450	7,300	7,800	7,950	8,050	7,800	6,500
INCO	4,425	-11.06	-0.56	Trading Buy	26.3	30.7	(71.2)	4,575	4,425	4,400	4,375	4,300	4,500	4,575	4,600	4,600	4,425
INDF	5,700	15.15	1.79	Trading	50.0	55.0	96.6	6,100	5,600	5,650	5,600	5,450	5,850	6,000	6,050	6,100	5,550
INDY	3,700	-27.45	-2.63	Spec. Buy	28.6	32.7	(82.4)	3,900	3,650	3,675	3,650	3,600	3,750	3,800	3,825	3,875	3,675
INTP	16,550	3.12	-1.78	OverSold	20.0	43.4	(22.5)	17,350	16,350	16,450	16,300	16,100	16,800	17,000	17,150	17,500	16,500
ISAT	5,050	-7.34	0.00	Accumulate	25.0	39.3	(45.4)	5,100	5,050	5,050	5,000	4,950	5,150	5,200	5,250	5,150	5,000
ITMG	44,600	-17.86	-1.22	Accumulate	22.0	39.0	(468.6)	45,100	44,550	44,400	44,150	43,750	45,050	45,450	45,700	46,100	44,500
JSMR	3,650	2.82	3.55	TakeProfit	60.7	67.1	55.7	3,700	3,600	3,650	3,625	3,625	3,675	3,675	3,700	3,725	3,475
KLBF	3,625	9.02	7.41	StrongSell	81.1	64.5	33.5	3,800	3,375	3,600	3,575	3,550	3,650	3,675	3,700	3,700	3,350
LSIP	2,300	-9.45	1.10	OverSold	35.3	42.9	(23.4)	2,350	2,300	2,275	2,250	2,225	2,325	2,350	2,375	2,400	2,250
MYOR	13,750	27.31	5.77	Trading	58.6	72.5	193.1	13,900	12,550	12,950	12,150	11,400	14,500	15,250	16,050	14,450	12,500
PGAS	3,975	-11.17	-0.62	OverSold	27.8	44.4	(3.0)	4,075	3,975	3,950	3,925	3,875	4,025	4,075	4,100	4,125	3,975
PTBA	21,000	-12.32	2.19	OverBought	60.0	48.3	(83.9)	21,500	20,700	20,850	20,700	20,550	21,150	21,300	21,450	21,500	20,500
RALS	780	-9.30	0.00	Trading	40.0	49.4	0.9	790	775	770	760	750	790	800	810	800	770
SGRO	3,350	3.08	-0.74	OverSold	29.4	43.5	(16.6)	3,450	3,300	3,325	3,300	3,250	3,400	3,450	3,475	3,450	3,300
SMCB	2,150	-3.37	1.18	OverSold	38.9	46.4	2.4	2,250	2,150	2,125	2,100	2,075	2,175	2,200	2,225	2,275	2,125
SMGR	9,750	-1.02	1.56	OverBought	64.5	56.2	61.6	9,950	9,600	9,700	9,650	9,600	9,800	9,850	9,900	9,950	9,400
SMRA	1,140	5.56	-1.72	Trading	58.8	45.8	0.5	1,180	1,130	1,110	1,080	1,060	1,160	1,180	1,210	1,180	1,100
TINS	2,550	-10.53	3.03	Trading	83.3	52.0	(25.3)	2,600	2,500	2,550	2,525	2,525	2,575	2,575	2,600	2,550	2,450
TLKM	7,150	-10.63	-1.38	OverSold	29.4	42.5	(83.5)	7,350	7,100	7,100	7,050	6,950	7,250	7,350	7,400	7,400	7,100
UNTR	24,650	1.44	4.23	TakeProfit	69.5	65.1	519.2	25,200	24,450	24,500	24,300	24,000	25,000	25,300	25,500	25,400	23,650
UNVR	14,850	-7.48	-0.34	OverSold	37.0	46.3	2.3	15,050	14,750	14,750	14,600	14,500	15,000	15,100	15,250	15,100	14,700

S1 = Support 1 S2 = Support 2 S3 = Support 3
 R1 = Resisten 1 R2 = Resisten 2 R2 = Resisten 2
 STO = Stochastic Oscillator
 RSI = Relative Strength Index
 MACD = Moving Average Convergence Divergence
 H-5 = 5 hari sebelumnya

RESEARCH TEAM

Andrian Tanuwijaya	Equity Analyst	(andrian.tanuwijaya@trimegah.com)
Hanel Topada Era Tania	Equity Analyst	(hanel.tania@trimegah.com)
Paul Raymond Widjaja	Equity Analyst	(paul.widjaja@trimegah.com)
T Hedy Arifien	Technical Analyst	(hedy@trimegah.com)
Rovandi	Research Assistant	(rovandi@trimegah.com)

EQUITY CAPITAL MARKET TEAM

Nathanael Benny Prasetyo	Head of Retail ECM	(benny.prasetyo@trimegah.com)
Windra Djulnaily	Pluit, Jakarta	(windra.djulnaily@trimegah.com)
Ariawan Anwar	Artha Graha, Jakarta	(ariawan.anwar@trimegah.com)
Ferry Zabur	Kelapa Gading, Jakarta	(ferry.zabur@trimegah.com)
Wirjawan Joesoef	Mangga Dua, Jakarta	(iwan@trimegah.com)
Lukman Abdul Azis	Kebon Jeruk, Jakarta	(lukman@trimegah.com)
Tutik Suciati	Semarang, Jawa Tengah	(tuty.s@trimegah.com)
Sonny Muljadi	Surabaya, Jawa Timur	(sonny.muljadi@trimegah.com)
Ni Luh Ketut Sri Agustini	Denpasar, Bali	(sri.agustini@trimegah.com)
Philip Fernando Suwandi	Makassar, Sulawesi Selatan	(philip.fs@trimegah.com)
agus.jatmiko	Balikpapan, Kalimantan Timur	(agus.jatmiko@trimegah.com)
Asep Saepudin	Bandung, Jawa Barat	(asep.saepudin@trimegah.com)
Asep Saepudin	Cirebon, Jawa Barat	(asep.saepudin@trimegah.com)
Very Wijaya	Medan, Sumatera Utara	(very.wijaya@trimegah.com)
Tantie Rivi Watie	Pekanbaru, Riau	(tantierw@trimegah.com)
Agus Bambang Suseno	Solo, Jawa Tengah	(agus.suseno@trimegah.com)
Agus Bambang Suseno	Yogyakarta, Jawa Tengah	(agus.suseno@trimegah.com)
Donny Kristanto Setiadi	Palembang, Sumatra Selatan	(donny.kristanto@trimegah.com)
Sonny Muljadi	Malang, Jawa Timur	(sonny.muljadi@trimegah.com)

PT Trimegah Securities Tbk
18th Fl, Artha Graha Building
Jl. Jend. Sudirman Kav. 52-53
Jakarta 12190, INDONESIA
Tel : (6221) 2924 9088 Fax : (6221) 2924 9163

DISCLAIMER

This report has been prepared by PT Trimegah Securities Tbk on behalf of itself and its affiliated companies and is provided for information purposes only. Under no circumstances is it to be used or considered as an offer to sell, or a solicitation of any offer to buy. This report has been produced independently and the forecasts, opinions and expectations contained herein are entirely those of Trimegah Securities.

While all reasonable care has been taken to ensure that information contained herein is not untrue or misleading at the time of publication, Trimegah Securities makes no representation as to its accuracy or completeness and it should not be relied upon as such. This report is provided solely for the information of clients of Trimegah Securities who are expected to make their own investment decisions without reliance on this report. Neither Trimegah Securities nor any officer or employee of Trimegah Securities accept any liability whatsoever for any direct or consequential loss arising from any use of this report or its contents. Trimegah Securities and/or persons connected with it may have acted upon or used the information herein contained, or the research or analysis on which it is based, before publication. Trimegah Securities may in future participate in an offering of the company's equity securities.