

IHSG 4.177,9 -15,6 -0,37%

Ulisan Pasar



Aksi profit taking yang mewarnai perdagangan kemarin, menahan laju perjalanan IHSG untuk melanjutkan rally penguatannya setelah kembali menciptakan rekor harga tertinggi 4.196 dan ditutup melemah 0,4% di level 4.177.

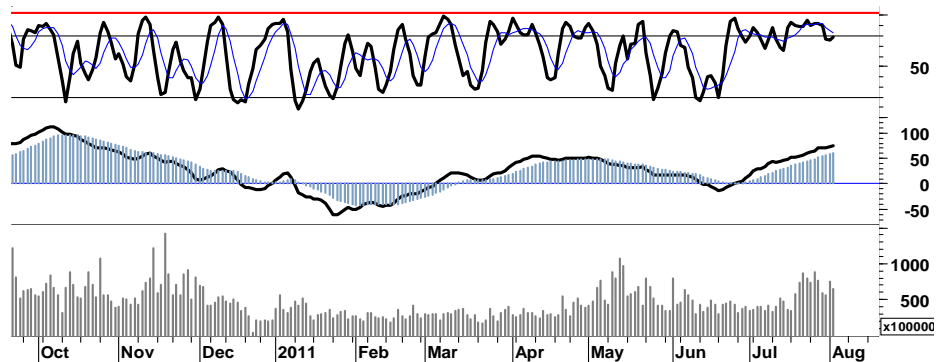
Pergerakan Indeks pada bursa-bursa utama Asia-Pacific yang juga ditutup melemah rata-rata 1,1%, merupakan salah satu katalis yang turut menahan laju kenaikan IHSG. Meskipun pada perdagangan kemarin para investor asing membukukan nilai total pembelian bersih senilai Rp688miliar, dengan 156rb aktifitas perdagangan yang terjadi.

Secara umum IHSG masih berada dalam kondisi bullish, beberapa leading indicator yang ada memberikan indikasi bahwasanya pergerakan IHSG memasuki area distribusi (konsolidasi) di area puncak harga dalam interval 4.100-4.200.

Sementara ditutupnya IHSG pada area berimbang pivot support 4.174/4.175, maka

peluang berlanjutnya tekanan sama besarnya dengan sisa kekuatan yang tersedia untuk bertahan pada support 4.120 dan menguji kembali resistensi harga 4.190.

Berdasarkan asumsi tersebut, kami perkirakan IHSG pada perdagangan hari ini akan mencoba bergerak dalam interval harga 4.095 - 4.190.



S1	S2	R1	R2
4,150	4,130	4,200	4,220

Saham Pilihan

Saham	Harga (Rp)	Rekomendasi	Stochastic	RSI	BB Top	BB Bottom	S1	S2	R1	R2
BISI	1,390	Trading Buy	15.15	41.95	1,540	1,370	1,360	1,330	1,510	1,540
EXCL	5,700	Trading Buy	19.35	36.05	6,050	5,450	5,600	5,500	5,800	5,900
INDY	3,675	Trading Buy	18.52	35.88	3,825	3,600	3,650	3,600	3,750	3,800
INTP	15,250	Trading Buy	16.05	29.42	16,350	14,750	15,000	14,700	15,800	16,100
SMGR	9,450	Trading Buy	12.82	38.96	9,950	9,100	9,350	9,250	9,750	9,850
UNVR	16,000	Trading Sell	84.29	72.37	16,350	15,300	15,850	15,650	16,350	16,550



Terpangkas 6% pada perdagangan kemarin, telah menyeret BISI memasuki area oversold. Hal tersebut memberikan peluang bagi BISI untuk bergerak mix-positif dalam interval 1.360 - 1.510.

S1	S2	R1	R2
1,360	1,330	1,510	1,540



Terbatasnya ruang pelemahan serta indikasi golden cross pada area oversold, membuka peluang bagi EXCL untuk bergerak dalam interval harga 5.600 - 5.900.

S1	S2	R1	R2
5,600	5,500	5,800	5,900



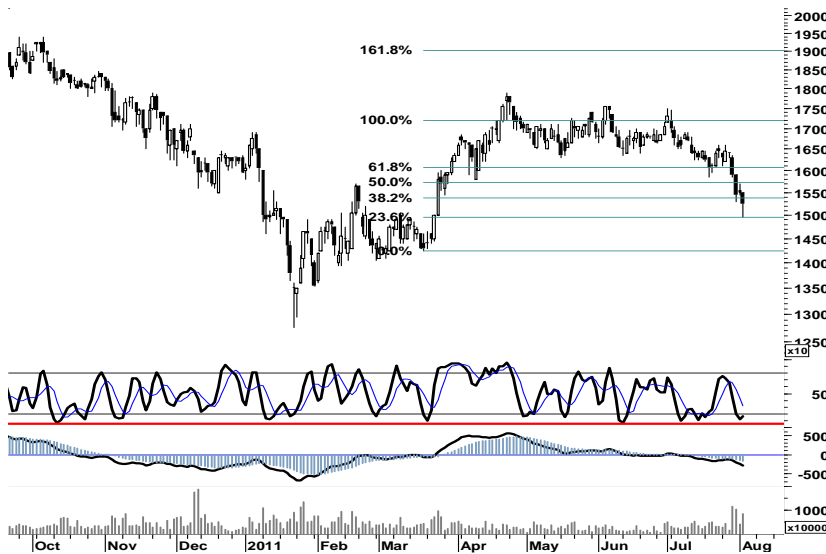
Ditutup pada area support siklus terendah retracement di level 3.650 pada area oversold, merupakan peluang akumulasi serta memanfaatkan momentum area positif 3.650 - 3.750.

S1	S2	R1	R2
3,650	3,600	3,750	3,800

INTP

15,250

Trading Buy



Indikasi signal positif stochastic pada area oversold merupakan peluang bagi INTP untuk kembali pada area positif trading.

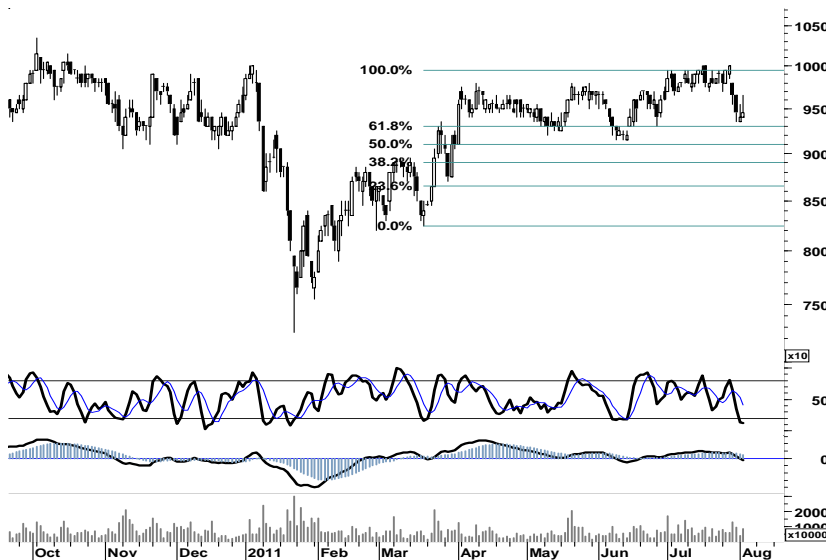
Manfaatkan peluang pergerakan dalam interval 15.250 - 15.800.

S1	S2	R1	R2
15,000	14,700	15,800	16,100

SMGR

9,450

Trading Buy



Sebagaimana halnya INTP, SMGR pun memiliki peluang untuk bergerak kembali pada zona hijau trading.

Manfaatkan peluang pergerakan dalam interval harga 9.350 - 9.750.

S1	S2	R1	R2
9,350	9,250	9,750	9,850

UNVR

16,000

Trading Sell



Ditutup pada area berimbang pivot support 16.000, UNVR memiliki peluang yang sama besarnya untuk melanjutkan rally penguatan menembus retracement 50% di level 16.200.

Waspadaai tekanan menuju support 15.650, apabila UNVR gagal bertahan pada support 15.850.

S1	S2	R1	R2
15,850	15,650	16,350	16,550

TRADE DATA

JCI (IHSG) 4,177.8 -15.6 -0.37%

YTD (Rp)	12.8%	Volume (m) :	7,848
YTD (USD)	19.4%	Nilai (Rpbn) :	3,328
Moving Avg 20day	4,056	Mkt Cap (Rpbn) :	3,439
Moving Avg 50day	3,914	Market P/E (x) :	16.2
Moving Avg 200day	3,700	Market Div. Yield (%) :	2.4

Indonesia & Sectors +/- (%) YTD (%)

MSCI Indonesia	5,193.2	-9.5	-0.18	14.22
JII	570.1	-4.7	-0.82	6.97
LQ45	740.6	-1.9	-0.25	11.98
JAKFIN Index	556.3	-0.8	-0.00	19.20
JAKINFR Index	792.4	7.4	0.01	-3.28
JAKMINE Index	3,391.5	0.2	0.00	3.58
JAKCONS Index	1,274.3	-7.9	-0.01	16.41
JAKTRAD Index	582.0	-9.7	-0.02	22.76
JAKMIND Index	1,297.4	-7.2	-0.01	34.16
JAKBIND Index	410.1	-6.6	-0.02	5.89
JAKPROP Index	241.0	-2.0	-0.01	18.64
JAKAGRI Index	2,438.6	-16.7	-0.01	6.75

Commodities +/- (%) YTD (%)

CRB Index	341.82	0.4	0.12	2.71
Oil & Gas				
Crude Oil	93.79	-1.1	-1.16	2.64
Natural Gas	4.16	-0.0	-0.79	-5.68
COAL (Rotterdam)	126.60	0.5	0.44	-3.65
COAL (Amsterdam)	126.52	0.4	0.31	0.45
COAL (Australia,wk)	119.20	0.3	0.21	-2.61
Industrial Metals				
Alumunium	2,571.50	-3.0	-0.12	4.56
Nickel	24,800	250	1.02	0.20
Tin	27,250	-850	-3.02	1.30
Prescious Metal				
Gold	1,643.10	22.7	1.40	15.60
Silver	40.09	0.8	1.99	29.71
Soft Commodities				
CPO (Malaysia)	3,121.00	-7.0	-0.22	-18.17
CPO (Netherlands)	1,102.50	-10.0	-0.90	-14.20
Rubber	4,957.87	-0.0	-0.00	-0.72
Corn	711.25	30.0	4.40	13.08
Wheat	718.00	41.5	6.13	-9.60
Soybeans	1,370.00	16.8	1.24	-1.70
Rice (Indonesia)	7,300.00	0.0	0.00	2.82

Winners

Stock	Price	(%)	Stock	Price	(%)
PLIN	3,200	6.67	CTRA	550	-8.33
ISAT	5,800	3.57	CPIN	2,525	-6.48
BUMI	3,225	3.20	UNTR	26,500	-3.81
EXCL	5,700	2.70	ICBP	5,800	-3.33
BBCA	8,750	2.34	BBNI	4,425	-3.28
BTPN	3,925	1.95	BMRI	7,900	-1.86
TLKM	7,600	1.33	INTP	15,250	-1.61
BBRI	7,250	0.69	INDF	6,300	-1.56
UNVR	16,000	0.63	ADRO	2,650	-0.93
GGRM	53,250	0.47	ASII	71,200	-0.63

Losers

Stock	Price	(%)	Stock	Price	(%)
CTRA	550	-8.33	CTRA	550	-8.33
CPIN	2,525	-6.48	CPIN	2,525	-6.48
UNTR	26,500	-3.81	UNTR	26,500	-3.81
ICBP	5,800	-3.33	ICBP	5,800	-3.33
BBNI	4,425	-3.28	BBNI	4,425	-3.28
BMRI	7,900	-1.86	BMRI	7,900	-1.86
INTP	15,250	-1.61	INTP	15,250	-1.61
INDF	6,300	-1.56	INDF	6,300	-1.56
ADRO	2,650	-0.93	ADRO	2,650	-0.93
ASII	71,200	-0.63	ASII	71,200	-0.63

Regional Indices +/- (%) YTD (%)

MXWO	MSCI Word	1,269.4	-27.8	-2.14	-0.83
SPX	S&P 500	1,254.1	-32.9	-2.56	-0.29
US					
Dow Jones Industrial		11,866.6	-265.9	-2.19	2.50
Nasdaq	US	2,669.2	-75.4	-2.75	0.62
Europe					
EURO 50	Europe	257.0	-5.0	-1.92	-6.83
FTSE	London	5,718.4	-56.0	-0.97	-3.08
DAX	Jerma	6,796.8	-157.2	-2.26	-1.70
CAC	France	3,522.8	-65.3	-1.82	-7.41
SMI	Swiss	5,546.9	-236.4	-4.09	-13.81
BRIC					
BOVESPA	Brazil	57,310.8	-1,225.0	-2.09	-17.31
MICEX	Russia	1,713.3	-11.8	-0.69	1.50
SENSEX	India	18,109.9	-204.4	-1.12	-11.70
NIFTY	India	5,456.6	-60.3	-1.09	-11.05
SHCOMP	China	2,679.3	-24.5	-0.91	-4.59
SZCOMP	China	1,180.0	-4.0	-0.34	-8.59

Developed ASIA

Nikkei	Japan	9,844.6	-120.4	-1.21	-3.76
TPX	Japan	844.0	-7.7	-0.91	-6.10
HIS	Hong kong	22,421.5	-241.9	-1.07	-2.67
KOSPI	S.Korea	2,121.3	-51.0	-2.35	3.43
TAIEX	Taiwan	8,584.7	-116.7	-1.34	-4.32
FSSTI	Singapore	3,177.1	-38.2	-1.19	-0.41

ASEAN

SET	Thailand	1,139.6	-4.5	-0.40	10.35
PCOMP	Philippines	4,541.2	-9.3	-0.20	8.10
KLCI	Malaysia	1,554.9	-3.2	-0.20	2.37
VNINDEX	Vietnam	396.6	-5.4	-1.34	-18.18

Currency +/- (%) YTD (%)

EURUSD	Euro	1.420	-0.005	-0.33	6.12
GBPUSD	United Kingdom	1.630	0.000	0.01	4.39
USDCHF	Switzerland	0.762	-0.021	-2.73	-18.50
USDCAD	Canada	0.961	0.004	0.45	-3.68
AUDUSD	Australia	1.078	-0.019	-1.75	5.34
NZDUSD	New Zealand	0.867	-0.010	-1.14	11.06
USDJPY	Japan	77.2	-0.060	-0.08	-4.89
USDCNY	China	6.438	0.004	0.07	-2.55
USDHKD	Hongkong	7.796	0.005	0.06	0.29
USDSGD	Singapore	1.206	0.005	0.38	-6.02
Rupiah	Indonesia	8,476.0	12.000	0.14	-5.78

Value (Rpbn) Volume (Lot) Freq (x)

BUMI	500,076	BNBR	1,755,120	PUDP	7,848
TLKM	324,027	ELTY	1,100,573	BHIT	5,484
ASII	278,475	ENRG	729,678	BUMI	4,837
BBRI	219,513	DEWA	667,749	SMDR	3,904
BMRI	148,043	KIJA	656,586	INTA	3,639
INTP	124,434	BKSL	451,687	STAR	2,842
BBNI	110,019	BUMI	315,396	CPIN	2,616
LPKR	106,218	LPKR	249,318	ELTY	2,566
ELTY	95,839	SIPD	244,889	DEWA	2,538
ENRG	93,869	STAR	215,330	LPCK	2,521

Code	Last	Ytd Chg(%)	H-5 Chg (%)	Rekomendasi	STO	RSI	MACD	Bollinger Band		Support			Resistance			H-5	
								Top	Bottom	1	2	3	1	2	3	Highest	Lowest
AALI	23,200	-13.43	-1.07	Trading	48.9	49.7	87.3	23,750	23,100	23,100	23,000	22,800	23,400	23,600	23,700	23,800	23,000
ACES	3,450	21.05	-1.43	Trading Buy	16.7	69.5	130.2	3,500	3,400	3,400	3,350	3,300	3,500	3,550	3,600	3,500	3,400
ADRO	2,650	-0.93	2.91	TakeProfit	77.3	61.5	49.0	2,725	2,625	2,625	2,600	2,575	2,675	2,700	2,725	2,700	2,525
AISA	750	-3.85	-3.85	OverSold	38.5	53.5	17.4	780	740	735	720	705	765	780	795	810	730
ANTM	2,025	-18.18	-1.22	OverSold	33.3	44.5	(15.8)	2,075	2,000	2,025	2,000	2,000	2,050	2,050	2,075	2,050	2,000
ASII	71,200	30.88	-3.72	OverSold	23.3	57.4	2,218.0	74,650	68,400	70,300	69,400	68,800	71,800	72,400	73,300	75,950	69,650
BBCA	8,750	35.66	5.42	Trading Sell	87.9	74.3	239.4	8,900	8,150	8,600	8,450	8,350	8,850	8,950	9,100	8,750	8,050
BBNI	4,425	16.45	5.99	Trading Sell	83.9	68.5	160.7	4,600	4,375	4,325	4,225	4,075	4,575	4,725	4,825	4,600	4,050
BBRI	7,250	40.10	9.02	Trading Sell	97.1	72.1	128.9	7,450	6,750	7,150	7,000	6,950	7,350	7,400	7,550	7,250	6,550
BDMN	5,600	1.82	4.67	Trading Sell	83.3	44.8	(102.4)	5,700	5,450	5,600	5,550	5,550	5,650	5,650	5,700	5,600	5,300
BISI	1,390	-25.67	-7.95	Trading Buy	15.2	41.9	14.9	1,540	1,370	1,360	1,330	1,270	1,450	1,510	1,540	1,540	1,390
BMRI	7,900	22.48	0.64	Trading	59.4	59.3	174.4	8,150	7,800	7,800	7,650	7,500	8,100	8,250	8,400	8,150	7,650
BSDE	1,050	19.32	2.94	TakeProfit	73.9	66.2	40.3	1,090	1,020	1,030	1,010	980	1,080	1,110	1,130	1,080	990
BTEL	355	51.06	-1.39	Trading	58.3	48.3	(0.1)	366	351	349	342	339	359	362	369	365	345
BUMI	3,225	3.20	3.20	TakeProfit	72.2	61.3	5.1	3,275	3,025	3,150	3,075	3,025	3,275	3,325	3,400	3,225	3,025
BWPT	1,230	-6.11	0.00	TakeProfit	72.7	60.1	13.1	1,250	1,230	1,220	1,200	1,190	1,250	1,260	1,280	1,260	1,190
ELTY	174	8.07	-1.14	Trading	55.9	64.7	5.7	178	169	171	168	165	177	180	183	178	167
EXCL	5,700	8.57	-5.00	Trading Buy	19.4	36.0	(90.9)	6,050	5,450	5,600	5,500	5,450	5,750	5,800	5,900	6,100	5,500
GGRM	53,250	29.72	1.14	Trading	54.9	61.4	1,272.4	54,250	50,650	52,700	52,150	51,350	54,050	54,850	55,400	54,300	50,600
HEXA	8,300	14.48	9.21	Trading Sell	89.5	69.9	298.2	8,400	8,050	8,150	8,000	7,900	8,400	8,500	8,650	8,300	7,600
HRUM	9,800	3.70	-7.11	Trading Buy	18.0	47.2	85.9	10,150	9,500	9,650	9,450	9,300	10,000	10,150	10,350	10,550	9,550
INCO	4,200	-15.58	-1.75	Accumulate	31.3	29.0	(73.4)	4,325	4,200	4,150	4,100	4,025	4,275	4,350	4,400	4,325	4,150
INDF	6,300	27.27	2.44	TakeProfit	69.0	65.9	171.7	6,550	6,150	6,200	6,100	5,950	6,450	6,600	6,700	6,500	6,050
INDY	3,675	-27.94	-5.16	Trading Buy	18.5	35.9	(41.5)	3,825	3,600	3,650	3,600	3,575	3,725	3,750	3,800	3,875	3,625
INTP	15,250	-4.98	-7.29	Trading Buy	16.0	29.4	(294.7)	16,350	14,750	15,000	14,700	14,450	15,550	15,800	16,100	16,600	14,950
ISAT	5,800	6.42	4.50	TakeProfit	76.5	70.3	112.8	5,900	5,350	5,700	5,550	5,500	5,900	5,950	6,100	5,800	5,400
ITMG	50,400	-7.18	-2.70	Trading	46.6	61.1	1,176.8	51,750	49,750	49,700	48,950	48,450	50,950	51,450	52,200	52,000	49,250
JSMR	4,000	12.68	1.91	TakeProfit	79.2	69.9	106.9	4,050	3,925	3,950	3,875	3,825	4,075	4,125	4,200	4,050	3,825
KLBF	3,475	4.51	-1.42	Trading	53.3	49.3	6.9	3,550	3,450	3,425	3,375	3,325	3,525	3,575	3,625	3,550	3,425
LSIP	2,400	-5.51	1.05	Trading	50.0	56.5	15.2	2,450	2,350	2,400	2,375	2,375	2,425	2,425	2,450	2,425	2,325
MAPI	4,475	61.26	4.07	Trading	55.2	58.2	161.1	4,800	4,375	4,400	4,325	4,175	4,625	4,775	4,850	4,800	4,225
PGAS	4,000	-10.61	0.00	Trading Sell	88.9	51.5	(1.5)	4,025	3,975	3,975	3,950	3,925	4,025	4,050	4,075	4,000	3,925
PTBA	21,400	-10.65	1.66	OverBought	67.4	55.9	79.8	21,550	21,300	21,300	21,150	21,100	21,500	21,550	21,700	21,600	20,850
RALS	850	-1.16	6.25	TakeProfit	73.1	62.8	13.8	895	805	840	825	810	870	885	900	890	790
SGRO	3,650	12.31	-2.67	OverSold	22.2	56.4	62.1	3,750	3,600	3,625	3,600	3,575	3,675	3,700	3,725	3,775	3,625
SMCB	2,100	-5.62	-2.33	OverSold	33.3	45.9	(15.4)	2,150	2,050	2,075	2,050	2,025	2,125	2,150	2,175	2,175	2,050
SMGR	9,450	-4.06	-5.03	Trading Buy	12.8	39.0	(29.4)	9,950	9,100	9,350	9,250	9,100	9,600	9,750	9,850	10,000	9,350
SMRA	1,270	17.59	3.25	TakeProfit	61.1	63.7	35.2	1,320	1,240	1,260	1,240	1,220	1,300	1,320	1,340	1,320	1,210
TINS	2,425	-14.91	-3.00	Accumulate	36.4	37.9	(20.1)	2,525	2,425	2,400	2,375	2,325	2,475	2,525	2,550	2,500	2,400
TLKM	7,600	-5.00	4.11	Trading Sell	93.3	64.7	53.7	7,700	7,250	7,500	7,400	7,350	7,650	7,700	7,800	7,600	7,250
UNTR	26,500	9.05	2.91	OverBought	73.0	59.5	776.9	27,950	26,300	25,950	25,350	24,550	27,350	28,150	28,750	27,750	25,250
UNVR	16,000	-0.31	6.67	Trading Sell	84.3	72.4	213.2	16,350	15,300	15,850	15,650	15,500	16,200	16,350	16,550	16,150	14,850

S1 = Support 1 S2 = Support 2 S3 = Support 3
 R1 = Resisten 1 R2 = Resisten 2 R2 = Resisten 2
 STO = Stochastic Oscillator
 RSI = Relative Strength Index
 MACD = Moving Average Convergence Divergence
 H-5 = 5 hari sebelumnya

RESEARCH TEAM

Andrian Tanuwijaya	Equity Analyst	(andrian.tanuwijaya@trimegah.com)
Hanel Topada Era Tania	Equity Analyst	(hanel.tania@trimegah.com)
Paul Raymond Widjaja	Equity Analyst	(paul.widjaja@trimegah.com)
T Hedy Arifien	Technical Analyst	(hedy@trimegah.com)
Rovandi	Research Assistant	(rovandi@trimegah.com)

EQUITY CAPITAL MARKET TEAM

Nathanael Benny Prasetyo	Head of Retail ECM	(benny.prasetyo@trimegah.com)
Windra Djulnaily	Pluit, Jakarta	(windra.djulnaily@trimegah.com)
Ariawan Anwar	Artha Graha, Jakarta	(ariawan.anwar@trimegah.com)
Ferry Zabur	Kelapa Gading, Jakarta	(ferry.zabur@trimegah.com)
Wirjawan Joesoef	Mangga Dua, Jakarta	(iwan@trimegah.com)
Lukman Abdul Azis	Kebon Jeruk, Jakarta	(lukman@trimegah.com)
Tutik Suciati	Semarang, Jawa Tengah	(tuty.s@trimegah.com)
Sonny Muljadi	Surabaya, Jawa Timur	(sonny.muljadi@trimegah.com)
Ni Luh Ketut Sri Agustini	Denpasar, Bali	(sri.agustini@trimegah.com)
Philip Fernando Suwandi	Makassar, Sulawesi Selatan	(philip.fs@trimegah.com)
agus.jatmiko	Balikpapan, Kalimantan Timur	(agus.jatmiko@trimegah.com)
Asep Saepudin	Bandung, Jawa Barat	(asep.saepudin@trimegah.com)
Asep Saepudin	Cirebon, Jawa Barat	(asep.saepudin@trimegah.com)
Very Wijaya	Medan, Sumatera Utara	(very.wijaya@trimegah.com)
Tantie Rivi Watie	Pekanbaru, Riau	(tantierw@trimegah.com)
Agus Bambang Suseno	Solo, Jawa Tengah	(agus.suseno@trimegah.com)
Agus Bambang Suseno	Yogyakarta, Jawa Tengah	(agus.suseno@trimegah.com)
Donny Kristanto Setiadi	Palembang, Sumatra Selatan	(donny.kristanto@trimegah.com)
Sonny Muljadi	Malang, Jawa Timur	(sonny.muljadi@trimegah.com)

PT Trimegah Securities Tbk
18th Fl, Artha Graha Building
Jl. Jend. Sudirman Kav. 52-53
Jakarta 12190, INDONESIA
Tel : (6221) 2924 9088 Fax : (6221) 2924 9163

DISCLAIMER

This report has been prepared by PT Trimegah Securities Tbk on behalf of itself and its affiliated companies and is provided for information purposes only. Under no circumstances is it to be used or considered as an offer to sell, or a solicitation of any offer to buy. This report has been produced independently and the forecasts, opinions and expectations contained herein are entirely those of Trimegah Securities.

While all reasonable care has been taken to ensure that information contained herein is not untrue or misleading at the time of publication, Trimegah Securities makes no representation as to its accuracy or completeness and it should not be relied upon as such. This report is provided solely for the information of clients of Trimegah Securities who are expected to make their own investment decisions without reliance on this report. Neither Trimegah Securities nor any officer or employee of Trimegah Securities accept any liability whatsoever for any direct or consequential loss arising from any use of this report or its contents. Trimegah Securities and/or persons connected with it may have acted upon or used the information herein contained, or the research or analysis on which it is based, before publication. Trimegah Securities may in future participate in an offering of the company's equity securities.