

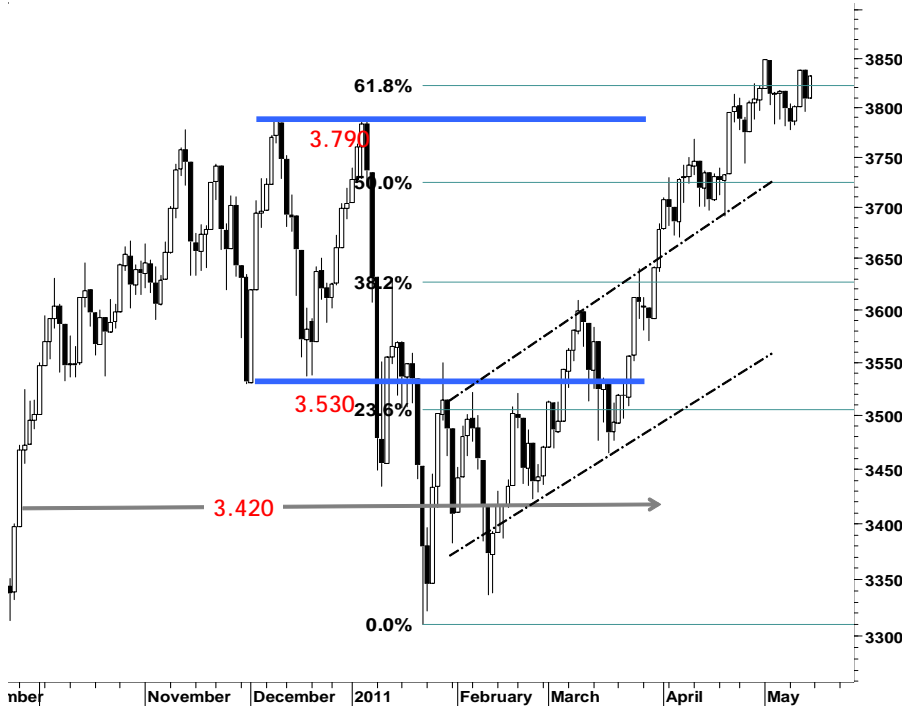
IHSG

3.832,0

23,3

0,61%

Ulusan Pasar



Bargain hunting sejumlah saham favorit serta saham papan kedua berhasil mendorong penguatan IHSG sehingga membukukan kenaikan sebesar 0,61% ditutup pada level 3.832. Sementara aksi profit taking mewarnai pergerakan harga pada beberapa saham unggulan. Berlanjutnya rally penguatan yang juga di ikuti oleh peningkatan harga 80% emiten yang tercatat dalam BEI, dan hanya 20% yang mengalami tekanan pelemahan serta aksi profit taking.

Untuk dapat bertahan pada area positif perdagangan, dalam kondisi overbought. Support harga 3.815, diharapkan mampu menahan laju tekanan yang diperkirakan masih akan mewarnai pergerakan IHSG pada perdagangan hari ini.

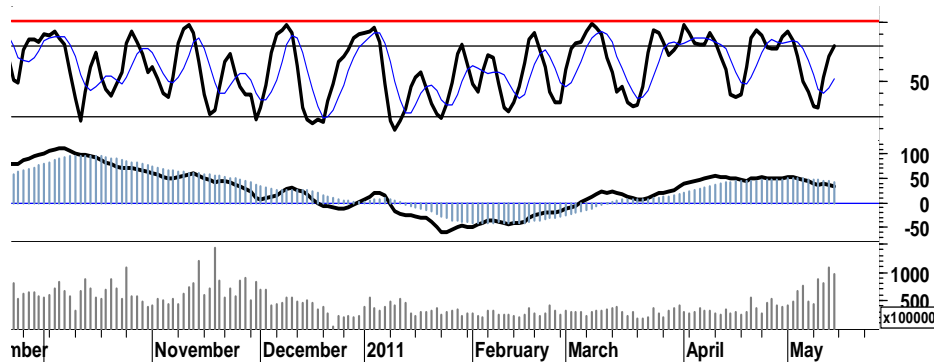
Bergerak mendekati area overbought stochastic 80,1 setelah berhasil menembus retracement rasio 62% di level 3.820, mengindikasikan ruang gerak penguatan yang

tersisa menjadi terbatas.

Secara umum IHSG berada dalam kondisi bullish, dan diperkirakan mampu untuk tetap bertahan pada basis support 3.815 - 3.820.

Pada perdagangan hari ini, kami perkirakan IHSG akan mencoba untuk bergerak dalam interval harga 3.820 -3.840.

S1	S2	R1	R2
3,815	3,800	3,840	3,850



Saham Pilihan

Saham	Harga (Rp)	Rekomendasi	Stochastic	RSI	BB Top	BB Bottom	S1	S2	R1	R2
ADRO	2,275	OverSold	38.46	50.12	2,350	2,250	2,250	2,225	2,325	2,350
INDF	5,650	OverSold	38.46	60.65	5,700	5,550	5,550	5,450	5,850	5,950
INDY	4,150	Trading	45.45	59.16	4,200	4,075	4,100	4,025	4,225	4,300
LSIP	2,425	Trading	50.00	52.48	2,475	2,400	2,425	2,400	2,450	2,475
SGRO	3,400	Trading	47.37	57.03	3,500	3,350	3,375	3,350	3,500	3,525
SMGR	9,350	Trading	44.44	48.52	9,450	9,300	9,300	9,200	9,500	9,600



Tumbuhnya rasio volume perdagangan hingga 21% serta arus distribusi yang mencoba bergerak memasuki area positif, memberikan indikasi positif bagi ADRO untuk melanjutkan rally penguatan menguji resistensi berikut pada level 2.325.

S1	S2	R1	R2
2,250	2,225	2,325	2,350



Ditutup mendekati retracement 50% serta indikasi golden cross stochastic, membuka peluang bagi INDF untuk bergerak menguji resistensi harga selanjutnya pada 5.850.

Perketat stoploss harga pada level 5.450, apabila INDF cenderung bergerak melemah menuju 5.500.

S1	S2	R1	R2
5,550	5,450	5,850	5,950



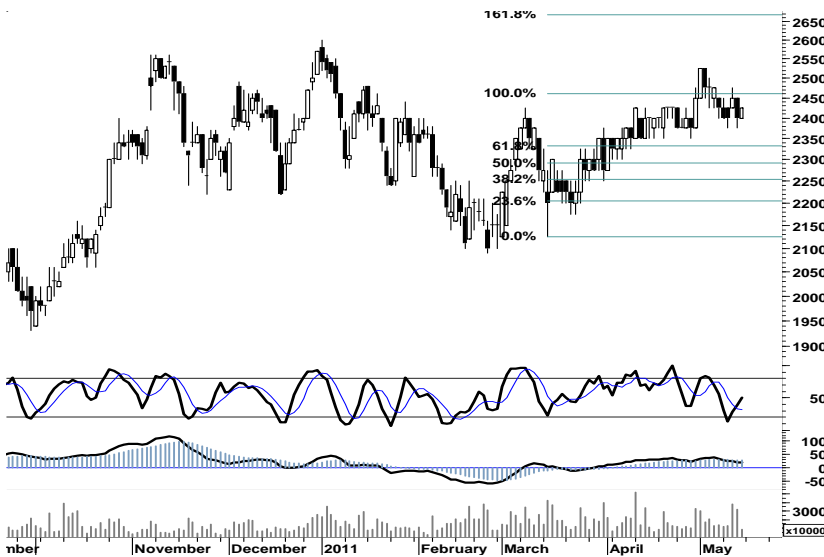
Indikasi signal positif golden cross stochastic, diharapkan mampu mendorong INDY keluar dari area konsolidasi untuk melakukan penetrasi resistensi kuat di level 4.200 - 4.225.

S1	S2	R1	R2
4,100	4,025	4,225	4,300

LSIP

2,425

Trading



Ditutup menguat 1,04% serta signal positif leading indikator, di harapkan mampu mendorong LSIP menguji penetrasi 2.450.

Waspadaai stop-loss harian di level 2.390, apabila LSIP gagal bergerak di atas level 2.425.

S1	S2	R1	R2
2,425	2,400	2,450	2,475

SGRO

3,400

Trading



Dengan memperketat stop-loss harga pada level 3.350, signal positif leading indikator diharapkan mampu mendorong SGRO menguji resistensi 3.500 - 3.525.

S1	S2	R1	R2
3,375	3,350	3,500	3,525

SMGR

9,350

Trading



Setelah selama sepekan mencoba bertahan pada basis support retracement 62%, SMGR pada perdagangan hari ini diharapkan mampu melanjutkan penguatan menguji penetrasi 9.500.

S1	S2	R1	R2
9,300	9,200	9,500	9,600

TRADE DATA

JCI (IHSG) 3,832.0 23.3 0.61%

YTD (Rp)	3.5% Volume (m) :	10,702
YTD (USD)	8.6% Nilai (Rpbn) :	4,891
Moving Avg 20day	3,797 Mkt Cap (Rptr) :	3,389
Moving Avg 50day	3,690 Market P/E (x) :	16.2
Moving Avg 200day	3,515 Market Div. Yield (%) :	2.4

Indonesia & Sectors		+/-	(%)	YTD (%)
MSCI Indonesia	4,755.1	23.7	0.50	4.59
JII	528.5	0.5	0.10	-0.83
LQ45	682.4	4.2	0.62	3.18
JAKFIN Index	503.0	5.5	0.01	7.78
JAKINFR Index	797.7	-1.4	-0.00	-2.63
JAKMINE Index	3,251.6	-5.4	-0.00	-0.69
JAKCONS Index	1,131.6	23.0	0.02	3.38
JAKTRAD Index	502.6	1.3	0.00	6.02
JAKMIND Index	1,062.3	6.4	0.01	9.85
JAKBIND Index	398.7	1.4	0.00	2.96
JAKPROP Index	212.8	1.3	0.01	4.76
JAKAGRI Index	2,278.4	11.2	0.00	-0.26

Commodities +/- (%) YTD (%)

CRB Index	338.53	-0.0	-0.01	1.72
Oil & Gas				
Crude Oil	99.65	0.7	0.69	9.05
Natural Gas	4.25	0.1	1.24	-3.61
COAL (Rotterdam)	120.40	-0.8	-0.66	-8.37
COAL (Amsterdam)	121.34	-1.3	-1.03	-3.66
COAL (Australia,wk)	120.85	0.0	0.00	-1.27
Industrial Metals				
Aluminium	2,553.25	-48.3	-1.85	3.82
Nickel	24,400	-150	-0.61	-1.41
Tin	28,600	-700	-2.39	6.32
Precious Metal				
Gold	1,493.60	-13.2	-0.88	5.08
Silver	35.01	0.2	0.62	13.27
Soft Commodities				
CPO (Malaysia)	3,365.00	55.0	1.66	-11.77
CPO (Netherlands)	1,137.50	12.5	1.11	-11.48
Rubber	5,017.33	102.6	2.09	0.47
Corn	682.00	1.5	0.22	8.43
Wheat	727.75	-7.8	-1.05	-8.37
Soybeans	1,329.50	-13.3	-0.99	-4.61
Rice (Indonesia)	6,750.00	150.0	2.27	-4.93

Winners

Stock	Price	(%)	Stock	Price	(%)
GJTL	2,875	7.48	ADRO	2,250	-3.23
SMAR	6,000	7.14	BBCA	7,200	-2.04
FASW	3,000	5.26	ITMG	46,600	-1.89
MEGA	3,625	5.07	ASII	58,150	-1.86
BNBR	84	5.00	BBRI	6,200	-1.59
CTRA	430	4.88	UNTR	22,550	-1.53
TSPC	2,200	4.76	BMRI	7,050	-1.40
AMRT	3,100	3.33	BUMI	3,550	-1.39
EXCL	6,400	1.59	GGRM	40,850	-1.21
TLKM	7,700	1.32	PGAS	4,125	-1.20

Losers

Stock	Price	(%)	Stock	Price	(%)
ADRO	2,250	-3.23	BBRI	6,200	-1.59
BBRI	6,200	-1.59	UNTR	22,550	-1.53
UNTR	22,550	-1.53	BMRI	7,050	-1.40
BMRI	7,050	-1.40	BUMI	3,550	-1.39
BUMI	3,550	-1.39	GGRM	40,850	-1.21
GGRM	40,850	-1.21	PGAS	4,125	-1.20
PGAS	4,125	-1.20			

Regional Indices +/- (%) YTD (%)

MXWO	MSCI World	1,343.2	-8.0	-0.59	4.93
SPX	S&P 500	1,337.8	-10.9	-0.81	6.37
US					
Dow Jones Industrial		12,595.8	-100.2	-0.79	8.79
Nasdaq	US	2,828.5	-34.6	-1.21	6.62
Europe					
EURO 50	Europe	280.5	-1.3	-0.46	1.70
FTSE	London	5,925.9	-19.1	-0.32	0.44
DAX	Germany	7,403.3	-40.6	-0.55	7.07
CAC	France	4,018.9	-4.4	-0.11	5.63
SMI	Swiss	6,563.3	0.7	0.01	1.98
BRIC					
BOVESPA	Brazil	63,235.3	-767.9	-1.20	-8.76
MICEX	Russia	1,632.2	1.5	0.09	-3.30
SENSEX	India	18,531.3	195.5	1.07	-9.64
NIFTY	India	5,544.8	58.6	1.07	-9.61
SHCOMP	China	2,871.0	26.9	0.95	2.24
SZCOMP	China	1,201.4	6.5	0.54	-6.93

Developed ASIA

Nikkei	Japan	9,648.8	-67.9	-0.70	-5.67
TPX	Japan	839.9	-9.4	-1.11	-6.55
HIS	Hong kong	23,276.3	202.5	0.88	1.05
KOSPI	S.Korea	2,120.1	-2.6	-0.12	3.37
TAIEX	Taiwan	9,006.6	-27.1	-0.30	0.38
FSSTI	Singapore	3,163.7	33.2	1.06	-0.83

ASEAN

SET	Thailand	1,085.0	-1.3	-0.12	5.05
PCOMP	Philippines	4,292.1	-19.9	-0.46	2.17
KLCI	Malaysia	1,540.7	8.5	0.55	1.44
VNINDEX	Vietnam	479.7	-2.5	-0.51	-1.03

Currency +/- (%) YTD (%)

EURUSD	Euro	1.412	-0.013	-0.89	5.49
GBPUSD	United Kingdom	1.620	-0.009	-0.58	3.75
USDCHE	Switzerland	0.893	0.008	0.95	-4.57
USDCAD	Canada	0.969	0.006	0.61	-2.95
AUDUSD	Australia	1.057	-0.011	-0.98	3.32
NZDUSD	New Zealand	0.787	-0.008	-1.03	0.92
USDJPY	Japan	80.8	-0.140	-0.17	-0.39
USDCNY	China	6.498	-0.001	-0.01	-1.65
USDHKD	Hongkong	7.773	0.001	0.01	-0.00
USDSGD	Singapore	1.245	0.007	0.53	-2.98
Rupiah	Indonesia	8,546.0	-19.000	-0.22	-5.00

Value

Value (Rpbn)	Volume (Lot)	Freq (x)
BNBR 276,605	BNBR 6,703,437	RICY 11,928
BBRI 211,460	ELTY 2,060,145	BNBR 7,452
BUMI 188,048	ENRG 1,513,218	ELTY 4,764
ASII 165,782	DEWA 1,494,100	ENRG 4,185
ELTY 164,489	TRUB 1,038,420	DEWA 4,150
CMNP 164,178	RICY 335,357	ADMG 3,516
BMRI 162,117	ASRI 318,996	CMNP 3,478
ENRG 145,334	GRN 311,152	COWL 3,325
PTBA 131,135	CMNP 278,155	BBRI 3,043
TLKM 115,040	BKSL 234,391	TRUB 2,840

Code	Last	Ytd Chg(%)	H-5 Chg (%)	Rekomendasi	STO	RSI	MACD	Bollinger Band		Support			Resistance			H-5	
								Top	Bottom	1	2	3	1	2	3	Highest	Lowest
AALI	23,650	-11.75	1.07	Trading	44.0	57.1	283.7	24,100	23,400	23,500	23,350	23,200	23,800	23,950	24,100	24,200	23,300
ACES	2,700	-5.26	1.89	StrongSell	87.5	64.5	25.2	2,750	2,650	2,675	2,650	2,625	2,725	2,750	2,775	2,700	2,625
ADRO	2,275	-14.95	-1.09	OverSold	38.5	50.1	3.1	2,350	2,250	2,250	2,225	2,200	2,300	2,325	2,350	2,350	2,225
AKRA	1,600	-5.88	-1.84	OverSold	22.7	48.1	18.0	1,630	1,590	1,590	1,570	1,560	1,620	1,630	1,650	1,660	1,580
ANTM	2,200	-11.11	0.00	OverBought	66.7	41.4	(16.7)	2,275	2,200	2,200	2,200	2,175	2,225	2,250	2,250	2,250	2,175
ASII	58,500	7.54	3.54	TakeProfit	78.0	61.4	615.9	60,300	56,150	57,950	57,400	56,600	59,300	60,100	60,650	59,500	56,100
BBCA	7,300	13.18	0.00	OverBought	75.0	51.6	40.4	7,400	7,200	7,200	7,100	7,000	7,400	7,500	7,600	7,350	7,050
BBNI	3,925	3.29	0.64	Trading	57.1	47.4	0.5	3,975	3,900	3,900	3,875	3,850	3,950	3,975	4,000	3,975	3,850
BBRI	6,250	20.77	0.81	OverBought	78.9	53.3	82.4	6,400	6,100	6,200	6,100	6,050	6,350	6,400	6,500	6,300	6,000
BBTN	1,670	0.00	1.83	OverBought	65.5	48.7	2.6	1,720	1,650	1,670	1,660	1,650	1,690	1,700	1,710	1,720	1,630
BDMN	6,100	10.91	-0.81	Trading	53.8	42.3	(92.4)	6,150	6,000	6,050	6,000	5,950	6,150	6,200	6,250	6,150	5,950
BISI	1,640	-12.30	5.81	OverBought	70.5	49.6	(11.0)	1,690	1,610	1,630	1,620	1,600	1,660	1,680	1,690	1,690	1,540
BMRI	7,150	10.85	2.14	StrongSell	86.4	57.1	110.8	7,300	6,950	7,150	7,100	7,100	7,200	7,200	7,250	7,150	6,800
BSDE	930	5.68	5.68	StrongSell	100.0	61.9	19.8	950	910	925	920	915	935	940	945	930	860
BTEL	380	61.70	0.00	Trading	50.0	58.8	5.8	386	377	375	370	365	385	390	395	385	375
BUMI	3,525	12.80	-2.08	Trading	43.8	59.7	85.6	3,650	3,500	3,500	3,475	3,450	3,550	3,575	3,600	3,625	3,500
CTRA	435	24.29	17.57	StrongSell	97.3	71.7	10.7	466	371	425	415	410	440	445	455	435	365
ELTY	169	4.97	14.97	StrongSell	85.7	83.1	4.8	174	146	162	155	150	174	179	186	171	145
EXCL	6,500	23.81	4.00	StrongSell	88.2	59.8	131.3	6,600	6,250	6,450	6,400	6,350	6,550	6,600	6,650	6,500	6,150
GGRM	43,750	6.58	6.97	StrongSell	85.6	71.7	234.2	44,200	39,700	41,750	39,750	38,650	44,850	45,950	47,950	43,900	40,500
HEXA	6,500	-10.34	3.17	StrongSell	82.9	64.8	114.0	6,600	6,300	6,200	5,850	5,700	6,700	6,850	7,200	6,550	6,000
INCO	4,825	-3.02	0.52	OverBought	61.1	47.3	11.4	4,950	4,800	4,800	4,750	4,725	4,875	4,900	4,950	4,925	4,775
INDF	5,650	14.14	-0.88	OverSold	38.5	60.6	82.8	5,700	5,550	5,550	5,450	5,350	5,750	5,850	5,950	5,750	5,500
INDY	4,150	-18.63	0.00	Trading	45.5	59.2	35.5	4,200	4,075	4,100	4,025	4,000	4,200	4,225	4,300	4,225	4,050
INTP	16,650	3.74	-2.06	Trading	52.8	49.0	114.8	17,050	16,550	16,500	16,350	16,050	16,950	17,250	17,400	17,100	16,500
ISAT	5,250	-3.67	-2.78	OverSold	33.3	46.6	6.4	5,350	5,200	5,250	5,250	5,200	5,300	5,350	5,350	5,400	5,200
ITMG	45,950	-15.38	-2.96	OverSold	21.8	43.1	(159.3)	47,950	45,500	45,350	44,750	44,000	46,700	47,450	48,050	48,000	45,500
JSMR	3,425	-3.52	0.00	OverBought	75.0	57.0	26.5	3,500	3,425	3,425	3,400	3,375	3,475	3,500	3,525	3,475	3,375
KLBF	3,425	3.01	-1.44	Trading	44.0	43.4	2.5	3,500	3,425	3,400	3,350	3,325	3,475	3,500	3,550	3,575	3,350
LSIP	2,425	-4.53	0.00	Trading	50.0	52.5	18.9	2,475	2,400	2,425	2,400	2,400	2,450	2,450	2,475	2,475	2,375
MYOR	11,650	7.87	0.87	OverBought	68.0	58.7	171.0	11,800	11,400	11,600	11,550	11,500	11,700	11,750	11,800	11,700	11,300
PGAS	4,050	-9.50	-4.14	OverSold	25.0	51.7	67.0	4,225	4,025	4,025	4,000	3,950	4,100	4,150	4,175	4,250	4,025
PTBA	21,400	-10.65	-1.61	StrongBuy	17.0	38.8	(28.4)	21,950	21,250	21,300	21,200	21,100	21,500	21,600	21,700	22,100	21,300
RALS	760	-11.63	4.11	OverBought	70.0	51.0	(13.0)	770	715	740	720	710	770	780	800	760	710
SGRO	3,400	4.62	-0.73	Trading	47.4	57.0	76.7	3,500	3,350	3,375	3,350	3,300	3,450	3,500	3,525	3,500	3,350
SMCB	2,100	-5.62	-3.45	OverSold	30.8	44.6	18.1	2,200	2,100	2,075	2,050	2,025	2,125	2,150	2,175	2,200	2,075
SMGR	9,350	-5.08	0.00	Trading	44.4	48.5	7.5	9,450	9,300	9,300	9,200	9,150	9,450	9,500	9,600	9,500	9,200
SMRA	1,130	4.63	-2.59	OverSold	23.1	45.9	1.4	1,140	1,110	1,120	1,100	1,080	1,160	1,180	1,200	1,190	1,100
TINS	2,700	-5.26	-1.82	OverSold	33.3	42.5	(6.2)	2,775	2,675	2,700	2,675	2,675	2,725	2,725	2,750	2,775	2,675
TLKM	7,700	-3.75	1.99	StrongSell	93.3	58.1	90.3	7,800	7,550	7,650	7,600	7,550	7,750	7,800	7,850	7,700	7,400
UNTR	22,450	-7.61	-1.47	Trading	40.0	51.2	238.9	22,950	22,250	22,300	22,100	21,900	22,700	22,900	23,100	23,170	22,200
UNVR	14,900	-7.17	-0.33	Accumulate	27.8	33.4	(157.6)	15,050	14,850	14,850	14,750	14,650	15,050	15,150	15,250	15,150	14,850

S1 = Support 1 S2 = Support 2 S3 = Support 3
 R1 = Resisten 1 R2 = Resisten 2 R2 = Resisten 2
 STO = Stochastic Oscillator
 RSI = Relative Strength Index
 MACD = Moving Average Convergence Divergence
 H-5 = 5 hari sebelumnya

RESEARCH TEAM

Andrian Tanuwijaya	Equity Analyst	(andrian.tanuwijaya@trimegah.com)
Hanel Topada Era Tania	Equity Analyst	(hanel.tania@trimegah.com)
T Heldy Arifien	Technical Analyst	(heldy@trimegah.com)
Rovandi	Research Assistant	(rovandi@trimegah.com)

EQUITY CAPITAL MARKET TEAM

Nathanael Benny Prasetyo	Head of Retail ECM	(benny.prasetyo@trimegah.com)
Windra Djulnaily	Pluit, Jakarta	(windra.djulnaily@trimegah.com)
Ariawan Anwar	Artha Graha, Jakarta	(ariawan.anwar@trimegah.com)
Ferry Zabur	Kelapa Gading, Jakarta	(ferry.zabur@trimegah.com)
Wirjawan Joesoef	Mangga Dua, Jakarta	(iwan@trimegah.com)
Lukman Abdul Azis	Kebon Jeruk, Jakarta	(lukman@trimegah.com)
Tutik Suciati	Semarang, Jawa Tengah	(tuty.s@trimegah.com)
Sonny Muljadi	Surabaya, Jawa Timur	(sonny.muljadi@trimegah.com)
Ni Luh Ketut Sri Agustini	Denpasar, Bali	(sri.agustini@trimegah.com)
Philip Fernando Suwandi	Makassar, Sulawesi Selatan	(philip.fs@trimegah.com)
agus.jatmiko	Balikpapan, Kalimantan Timur	(agus.jatmiko@trimegah.com)
Asep Saepudin	Bandung, Jawa Barat	(asep.saepudin@trimegah.com)
Asep Saepudin	Cirebon, Jawa Barat	(asep.saepudin@trimegah.com)
Very Wijaya	Medan, Sumatera Utara	(very.wijaya@trimegah.com)
Tantie Rivi Watie	Pekanbaru, Riau	(tantierw@trimegah.com)
Agus Bambang Suseno	Solo, Jawa Tengah	(agus.suseno@trimegah.com)
Agus Bambang Suseno	Yogyakarta, Jawa Tengah	(agus.suseno@trimegah.com)
Donny Kristanto Setiadi	Palembang, Sumatra Selatan	(donny.kristanto@trimegah.com)
Sonny Muljadi	Malang, Jawa Timur	(sonny.muljadi@trimegah.com)

PT Trimegah Securities Tbk
18th Fl, Artha Graha Building
Jl. Jend. Sudirman Kav. 52-53
Jakarta 12190, INDONESIA
Tel : (6221) 2924 9088 Fax : (6221) 2924 9163

DISCLAIMER

This report has been prepared by PT Trimegah Securities Tbk on behalf of itself and its affiliated companies and is provided for information purposes only. Under no circumstances is it to be used or considered as an offer to sell, or a solicitation of any offer to buy. This report has been produced independently and the forecasts, opinions and expectations contained herein are entirely those of Trimegah Securities.

While all reasonable care has been taken to ensure that information contained herein is not untrue or misleading at the time of publication, Trimegah Securities makes no representation as to its accuracy or completeness and it should not be relied upon as such. This report is provided solely for the information of clients of Trimegah Securities who are expected to make their own investment decisions without reliance on this report. Neither Trimegah Securities nor any officer or employee of Trimegah Securities accept any liability whatsoever for any direct or consequential loss arising from any use of this report or its contents. Trimegah Securities and/or persons connected with it may have acted upon or used the information herein contained, or the research or analysis on which it is based, before publication. Trimegah Securities may in future participate in an offering of the company's equity securities.