

IHSG 3.849,3 29,7 0,77%

Ulisan Pasar



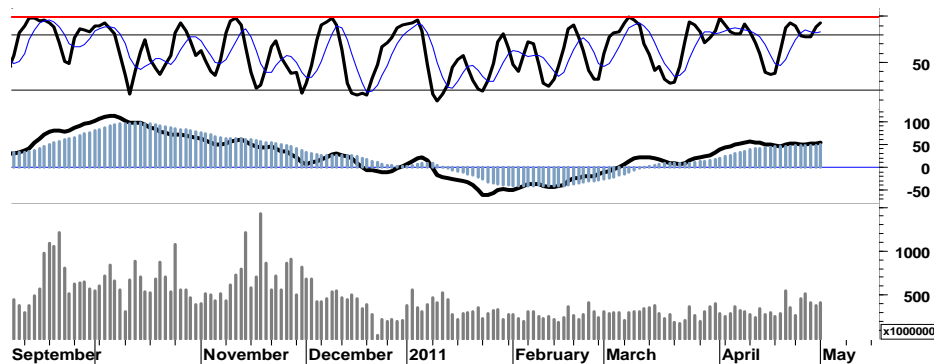
Tingkat deflasi bulan April 2011 0,31% yang diumumkan oleh BPS, memberikan dorongan sentimen positif bagi IHSG dengan kembali membukukan penutupan pada rekor harga tertinggi 3.849. Tercatat pembelian bersih sebesar Rp764miliar, sebagai aksi akumulasi terhadap sejumlah saham unggulan yang dilakukan oleh para investor asing kembali mengkonfirmasi signal positif 'golden cross' pada area overbought yang muncul kemarin.

Technical rebound yang terjadi pada saham BBKA, BBRI, BMRI, ASII dan melesatnya harga AALI, merupakan sejumlah saham unggulan yang berhasil mendorong IHSG melakukan penetrasi resistensi 3.840.

Signal positif leading indicator serta masih tersisa ruang penguatan harga hingga 8 basis di area overbought, mengindikasikan bahwa pada pergerakan IHSG hari ini akan di bayang-bayangi oleh aksi profit taking maupun tekanan jual. Dengan demikian untuk mengantisipasi hal

tersebut, disarankan bagi para investor untuk memperketat stop-loss harga pada level 3.790-3.795 dalam memanfaatkan swing positif dengan melakukan trading.

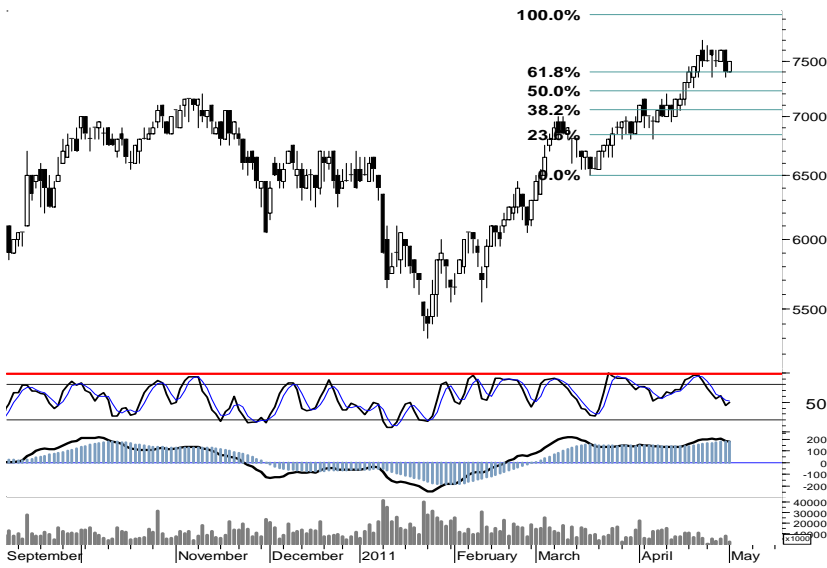
Secara umum, IHSG berada pada kondisi bullish dan terbuka peluang untuk melanjutkan perjalanan menuju area 4.000, dengan basis support harga di level 3.750. Menambah porsi serta bobot portofolio dapat dilakukan, hanya apabila IHSG berhasil menembus resistensi 3.860 atau saat IHSG terkoreksi dan menguji support 3.750.



S1	S2	R1	R2
3,830	3,810	3,860	3,869

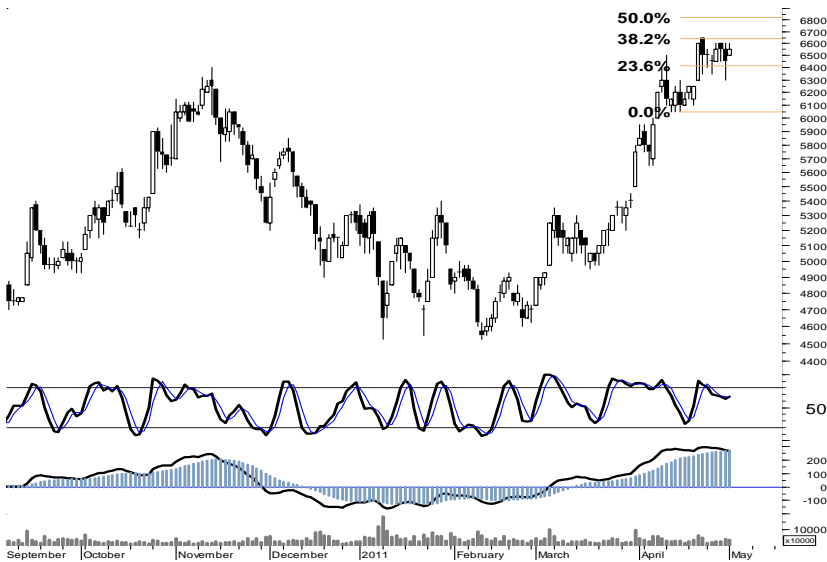
Saham Pilihan

Saham	Harga (Rp)	Rekomendasi	Stochastic	RSI	BB Top	BB Bottom	S1	S2	R1	R2
BBKA	7,500	Trading	50.00	64.44	7,650	7,400	7,450	7,400	7,600	7,650
BBRI	6,550	TakeProfit	66.67	70.93	6,650	6,450	6,500	6,450	6,650	6,700
BBTN	1,690	StrongBuy	7.41	52.36	1,780	1,660	1,680	1,660	1,740	1,760
INDF	5,600	Trading	41.67	66.84	5,700	5,550	5,550	5,500	5,700	5,750
INTP	17,100	StrongBuy	18.00	59.31	17,250	17,000	17,000	16,850	17,250	17,400
TLKM	7,750	TakeProfit	78.26	61.34	7,900	7,500	7,700	7,650	7,850	7,900



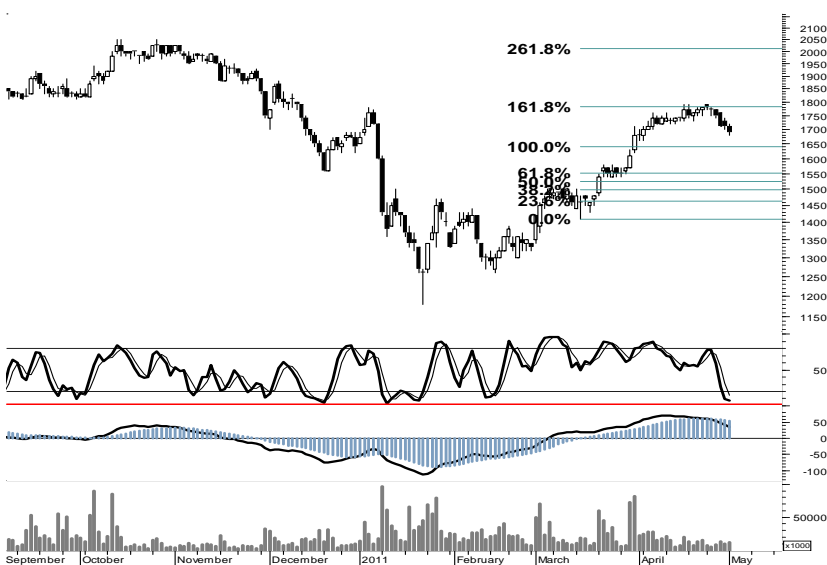
Ditutup pada area pivot support 7.500, menempatkan BBBCA pada kondisi berimbang. Signal positif stochastic, membuka peluang bagi BBBCA untuk mencoba bertahan pada area konsolidasi dalam interval harga 7.350 - 7.600.

S1	S2	R1	R2
7,450	7,400	7,600	7,650



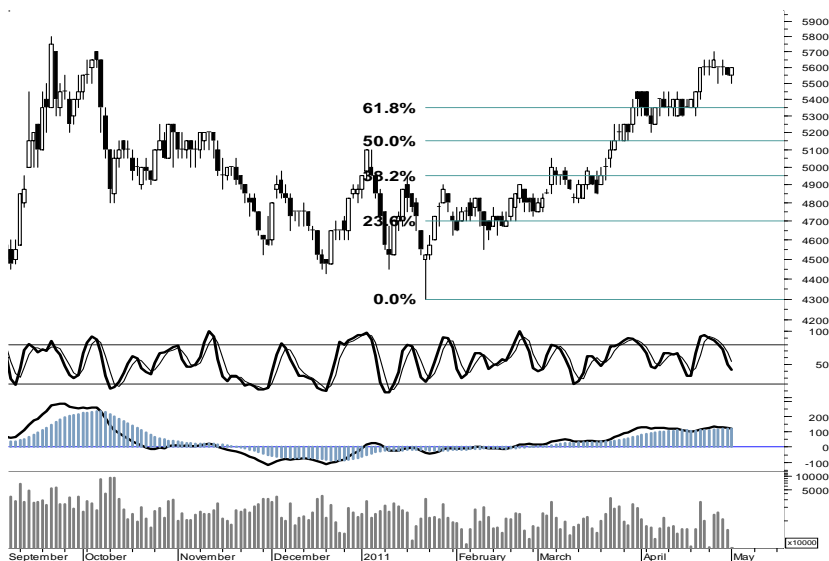
Dalam kondisi berimbang di area pivot support 6.550, indikasi golden cross stochastic membuka peluang bagi BBRI untuk menguji penetrasi resistensi 6.650. Perketat stop-loss harga pada support 6.400, apabila BBRI gagal menembus resistensi 6.650.

S1	S2	R1	R2
6,500	6,450	6,650	6,700



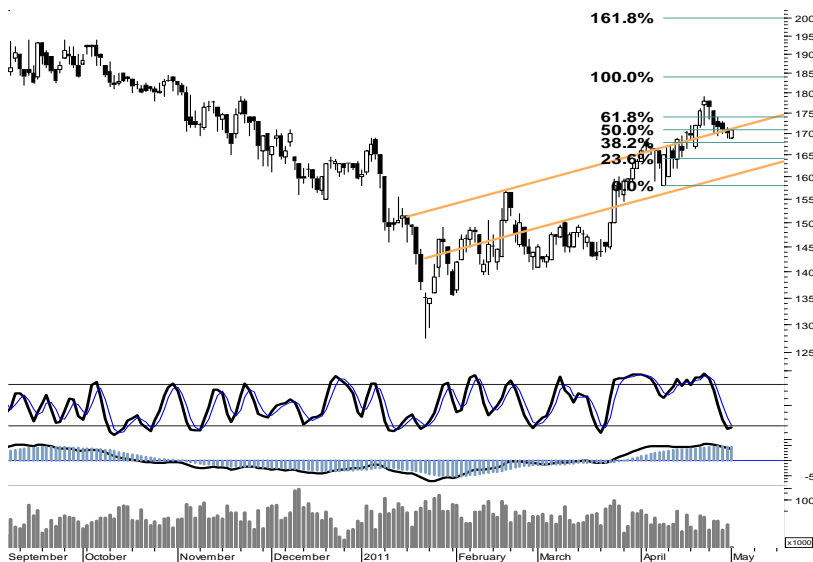
Penyempitan ruang tekanan pelemahan pada leading indicator yang ada, telah membuka peluang akumulasi pada BBTN di area support 1.650 - 1.660.

S1	S2	R1	R2
1,680	1,660	1,740	1,760



Berada pada kondisi berimbang, batasi stop-loss harga pada level 5.450 apabila INDF gagal melakukan penetrasi harga 5.700.

S1	S2	R1	R2
5,550	5,500	5,700	5,750



Berbasis support retracement 38% di level 16.800 dengan signal positif serta indikasi golden cross stochastic, INTP memiliki peluang untuk bergerak menuju resistensi harga 17.400.

S1	S2	R1	R2
17,000	16,850	17,250	17,400



Sgnal positif dari beberapa leading indicator yang muncul, TLKM masih memiliki peluang untuk melakukan uji resistensi pada level harga 7.850.

S1	S2	R1	R2
7,700	7,650	7,850	7,900

TRADE DATA

JCI (IHSG) 3,849.3 29.7 0.78%

YTD (Rp)	3.9% Volume (m) :	4,154
YTD (USD)	8.2% Nilai (Rpbn) :	3,486
Moving Avg 20day	3,756 Mkt Cap (Rpbn) :	3,430
Moving Avg 50day	3,629 Market P/E (x) :	16.5
Moving Avg 200day	3,477 Market Div. Yield (%) :	2.4

Indonesia & Sectors +/- (%) YTD (%)

MSCI Indonesia	4796.94	50.5	1.06	5.51
JII	532.13	3.4	0.64	-0.14
LQ45	687.35	6.7	0.99	3.93
JAKFIN Index	519.65	8.2	0.02	11.35
JAKINFR Index	805.40	5.7	0.01	-1.69
JAKMINE Index	3277.28	0.0	0.00	0.10
JAKCONS Index	1120.89	2.5	0.00	2.40
JAKTRAD Index	496.23	-1.1	-0.00	4.67
JAKMIND Index	1016.82	7.9	0.01	5.15
JAKBIND Index	400.92	0.4	0.00	3.53
JAKPROP Index	208.66	0.2	0.00	2.74
JAKAGRI Index	2249.38	47.5	0.02	-1.53

Commodities +/- (%) YTD (%)

CRB Index	368.17	-2.4	-0.64	10.63
Oil & Gas				
Crude Oil	113.52	-0.4	-0.36	24.23
Natural Gas	4.69	-0.0	-0.11	6.54
COAL (Rotterdam)	128.45	0.0	0.00	-2.25
COAL (Amsterdam)	128.75	0.0	0.00	2.22
COAL (Australia,wk)	122.80	0.0	0.00	0.33
Industrial Metals				
Aluminium	2,763.75	0.0	0.00	12.38
Nickel	26,850	0	0.00	8.48
Tin	32,050	0	0.00	19.14
Precious Metal				
Gold	1,557.10	0.7	0.04	9.55
Silver	46.08	-2.5	-5.15	49.09
Soft Commodities				
CPO (Malaysia)	3,370.00	0.0	0.00	-11.64
CPO (Netherlands)	1,170.00	32.5	2.86	-8.95
Rubber	5,208.08	-199.0	-3.68	4.29
Corn	734.50	-19.5	-2.59	16.77
Wheat	791.75	22.5	2.92	-0.31
Soybeans	1,393.00	0.3	0.02	-0.05
Rice (Indonesia)	6,600.00	0.0	0.00	-7.04

Winners

Stock	Price	(%)	Stock	Price	(%)
SMMA	3,300	17.86	DSSA	25,400	-5.93
AALI	24,000	3.67	GIAA	530	-3.64
BMRI	7,350	2.80	APLN	355	-2.74
PGAS	4,100	2.50	DOID	1,270	-2.31
BYAN	17,200	1.78	BSDE	900	-2.17
BBRI	6,550	1.55	ICBP	5,300	-1.85
BBCA	7,500	1.35	BRMS	690	-1.43
ADRO	2,225	1.14	HRUM	9,500	-1.04
ASII	56,650	0.89	PNBN	1,130	-0.88
TLKM	7,750	0.65	EXCL	6,750	-0.74

Losers

Regional Indices +/- (%) YTD (%)

MXWO	MSCI Word	1,391.9	3.2	0.23	8.73
SPX	S&P 500	1,361.2	-2.4	-0.18	8.24
US					
Dow Jones Industrial		12,807.4	-3.2	-0.02	10.62
Nasdaq	US	2,864.1	-9.5	-0.33	7.96
Europe					
EURO 50	Europe	283.9	0.2	0.05	2.94
FTSE	London	6,069.9	0.0	0.00	2.88
DAX	German	7,527.6	13.2	0.18	8.87
CAC	France	4,108.8	1.9	0.05	7.99
SMI	Swiss	6,544.7	5.0	0.08	1.69
BRIC					
BOVESPA	Brazil	65,462.8	-670.1	-1.01	-5.54
MICEX	Russia	1,741.8	0.0	0.00	3.19
SENSEX	India	18,998.0	-137.9	-0.72	-7.37
NIFTY	India	5,701.3	-48.2	-0.84	-7.06
SHCOMP	China	2,911.5	0.0	0.00	3.68
SZCOMP	China	1,200.6	0.0	0.00	-6.99

Developed ASIA

Nikkei	Japan	10,004.2	154.5	1.57	-2.20
TPX	Japan	865.6	13.7	1.61	-3.70
HIS	Hong kong	23,720.8	0.0	0.00	2.98
KOSPI	S.Korea	2,229.0	36.6	1.67	8.68
TAIEX	Taiwan	9,007.9	0.0	0.00	0.39
FSSTI	Singapore	3,179.9	0.0	0.00	-0.32

ASEAN

SET	Thailand	1,093.6	0.0	0.00	5.89
PCOMP	Philippines	4,326.8	7.3	0.17	2.99
KLCI	Malaysia	1,535.0	0.0	0.00	1.06
VNINDEX	Vietnam	480.1	0.0	0.00	-0.94

Currency +/- (%) YTD (%)

EURUSD	Euro	1.483	0.002	0.16	10.80
GBPUSD	United Kingdom	1.666	-0.005	-0.31	6.68
USDCHF	Switzerland	0.865	-0.000	-0.01	-7.49
USDCAD	Canada	0.951	0.005	0.58	-4.75
AUDUSD	Australia	1.094	-0.003	-0.25	6.95
NZDUSD	New Zealand	0.806	-0.003	-0.43	3.36
USDJPY	Japan	81.2	0.030	0.04	0.12
USDCNY	China	6.493	0.000	0.00	-1.73
USDHKD	Hongkong	7.767	0.000	0.00	-0.08
USDSGD	Singapore	1.223	-0.001	-0.10	-4.69
Rupiah	Indonesia	8,543.0	-20.000	-0.23	-5.04

Value

Value (Rpbn)	Volume (Lot)	Freq (x)
BMRI 320,925	ENRG 1,119,977	PUDP 8,409
BBRI 234,493	BNBR 639,577	ENRG 4,127
PGAS 182,379	ELTY 613,668	MLPL 3,551
BUMI 160,024	DEWA 411,448	KIAS 3,510
SGRO 125,635	TRUB 384,057	CSAP 3,196
LPKR 112,342	KIAS 289,703	ELTY 2,601
ASII 108,403	LPKR 283,929	BNBR 2,532
AALI 95,686	BIPI 180,210	BMRI 2,260
ENRG 91,631	MLPL 169,691	KLBF 2,092
LSIP 75,591	CNKO 158,797	BUMI 1,996

Code	Last	Ytd Chg(%)	H-5 Chg (%)	Rekomendasi	STO	RSI	MACD	Bollinger Band		Support			Resistance			H-5	
								Top	Bottom	1	2	3	1	2	3	Highest	Lowest
AALI	24,000	-10.45	5.03	StrongSell	91.7	70.3	227.7	24,200	22,650	23,500	22,950	22,700	24,300	24,550	25,100	24,000	22,700
ACES	2,650	-7.02	1.92	Trading	57.1	59.1	21.4	2,700	2,625	2,625	2,600	2,575	2,675	2,700	2,725	2,700	2,575
ADRO	2,225	-16.82	-1.11	OverSold	28.6	43.8	(27.3)	2,250	2,200	2,200	2,175	2,150	2,250	2,275	2,300	2,250	2,200
AKRA	1,680	-1.18	5.00	StrongSell	88.4	67.9	45.1	1,730	1,660	1,660	1,640	1,620	1,700	1,720	1,740	1,720	1,560
ANTM	2,275	-8.08	-1.09	Trading	57.1	47.6	4.4	2,325	2,250	2,250	2,225	2,200	2,300	2,325	2,350	2,300	2,250
ASII	56,650	4.14	3.19	StrongSell	92.3	56.6	53.2	57,700	54,200	56,300	55,950	55,750	56,850	57,050	57,400	56,700	53,750
BBCA	7,500	16.28	0.00	Trading	50.0	64.4	173.6	7,650	7,400	7,450	7,400	7,350	7,550	7,600	7,650	7,650	7,350
BBNI	4,075	7.24	-1.81	OverSold	23.5	62.2	71.1	4,125	4,025	4,050	4,000	3,975	4,125	4,150	4,200	4,175	4,025
BBRI	6,550	26.57	0.77	TakeProfit	66.7	70.9	270.4	6,650	6,450	6,500	6,450	6,400	6,600	6,650	6,700	6,600	6,300
BBTN	1,690	1.20	-5.06	StrongBuy	7.4	52.4	36.8	1,780	1,660	1,680	1,660	1,640	1,720	1,740	1,760	1,790	1,680
BDMN	6,200	12.73	-1.59	Accumulate	37.5	38.0	(66.5)	6,300	6,150	6,150	6,100	6,000	6,300	6,400	6,450	6,350	6,100
BISI	1,660	-11.23	-6.74	StrongBuy	19.6	47.1	27.5	1,710	1,650	1,650	1,630	1,600	1,700	1,730	1,750	1,820	1,640
BMRI	7,350	13.95	4.26	TakeProfit	73.9	69.7	201.7	7,450	6,950	7,250	7,100	7,050	7,450	7,500	7,650	7,350	6,900
BSDE	900	2.27	-2.17	OverSold	39.1	62.9	31.7	945	895	890	875	860	920	935	950	960	890
BTEL	385	63.83	0.00	StrongSell	100.0	72.1	12.6	385	385	382	379	377	387	389	392	385	375
BUMI	3,450	10.40	3.76	StrongSell	84.2	65.6	57.7	3,525	3,300	3,425	3,400	3,375	3,475	3,500	3,525	3,450	3,275
CTRA	390	11.43	0.00	OverBought	60.0	58.6	9.0	404	377	385	380	375	395	400	405	400	375
ELTY	146	-9.32	5.04	TakeProfit	69.7	66.0	1.0	148	143	144	141	139	149	151	154	148	137
EXCL	6,750	28.57	7.14	TakeProfit	63.0	73.3	269.6	7,050	6,450	6,700	6,600	6,500	6,900	7,000	7,100	7,100	6,200
GGRM	40,700	-0.85	-0.37	OverSold	34.8	52.6	25.6	40,850	40,200	40,450	40,200	40,050	40,850	41,000	41,250	41,450	40,100
HEXA	5,650	-22.07	-0.88	OverSold	36.4	40.1	(138.9)	5,750	5,600	5,600	5,550	5,500	5,700	5,750	5,800	5,800	5,600
INCO	4,975	0.00	1.02	Trading	54.5	57.1	43.1	5,075	4,925	4,950	4,900	4,875	5,025	5,050	5,100	5,100	4,900
INDF	5,600	13.13	0.00	Trading	41.7	66.8	120.7	5,700	5,550	5,550	5,500	5,450	5,650	5,700	5,750	5,700	5,500
INDY	4,075	-20.10	3.16	OverBought	71.4	56.4	14.9	4,100	4,025	4,050	4,000	3,975	4,125	4,150	4,200	4,100	3,925
INTP	17,100	6.54	-3.12	StrongBuy	18.0	59.3	401.9	17,250	17,000	17,000	16,850	16,800	17,200	17,250	17,400	17,800	16,900
ISAT	5,350	-1.83	-0.93	Trading	56.3	54.2	29.1	5,450	5,200	5,300	5,250	5,200	5,400	5,450	5,500	5,400	5,150
ITMG	47,200	-13.08	-0.84	OverSold	24.4	47.4	(68.0)	47,350	46,800	46,700	46,200	45,900	47,500	47,800	48,300	48,000	46,500
JSMR	3,350	-5.63	0.00	Trading	46.7	53.7	0.7	3,375	3,275	3,300	3,250	3,225	3,375	3,400	3,450	3,400	3,250
KLBF	3,600	8.27	-2.04	OverSold	31.3	60.2	89.6	3,625	3,575	3,575	3,550	3,525	3,625	3,650	3,675	3,675	3,550
LSIP	2,525	-0.59	6.32	StrongSell	80.0	67.5	37.4	2,575	2,350	2,475	2,425	2,400	2,550	2,575	2,625	2,525	2,350
MYOR	11,400	5.56	-1.72	OverSold	37.5	55.6	249.1	11,850	10,900	11,200	10,950	10,850	11,550	11,650	11,900	11,750	10,900
PGAS	4,100	-8.38	4.46	TakeProfit	78.9	66.3	57.9	4,125	3,950	4,050	4,000	3,950	4,150	4,200	4,250	4,125	3,900
PTBA	22,350	-6.68	0.90	TakeProfit	61.8	60.8	285.5	22,500	22,200	22,300	22,250	22,150	22,450	22,550	22,600	22,600	22,000
RALS	740	-13.95	-5.13	StrongBuy	17.6	40.0	(11.9)	755	730	730	720	710	750	760	770	790	730
SGRO	3,550	9.23	9.23	StrongSell	88.0	76.2	96.0	3,625	3,150	3,425	3,300	3,225	3,625	3,700	3,825	3,575	3,200
SMCB	2,225	0.00	0.00	TakeProfit	64.7	62.5	71.0	2,325	2,225	2,175	2,125	2,100	2,250	2,275	2,325	2,300	2,150
SMGR	9,550	-3.05	0.00	Trading	42.9	57.9	107.9	9,600	9,450	9,500	9,450	9,400	9,600	9,650	9,700	9,650	9,400
SMRA	1,260	16.67	8.62	StrongSell	93.9	69.6	42.8	1,310	1,190	1,260	1,260	1,250	1,270	1,280	1,280	1,270	1,150
TINS	2,850	0.00	0.88	StrongSell	80.0	56.8	43.5	2,925	2,825	2,825	2,800	2,750	2,900	2,950	2,975	2,900	2,800
TLKM	7,750	-3.13	2.65	TakeProfit	78.3	61.3	134.0	7,900	7,500	7,700	7,650	7,600	7,800	7,850	7,900	7,750	7,400
UNTR	23,350	-3.91	0.86	TakeProfit	75.6	60.2	199.9	23,600	23,000	23,250	23,150	23,100	23,400	23,450	23,550	23,500	22,750
UNVR	15,300	-4.67	0.66	OverBought	66.7	47.0	(119.9)	15,350	15,250	15,200	15,100	15,050	15,350	15,400	15,500	15,400	15,100

S1 = Support 1 S2 = Support 2 S3 = Support 3
 R1 = Resisten 1 R2 = Resisten 2 R2 = Resisten 2
 STO = Stochastic Oscillator
 RSI = Relative Strength Index
 MACD = Moving Average Convergence Divergence
 H-5 = 5 hari sebelumnya

RESEARCH TEAM

Andrian Tanuwijaya	Equity Analyst	(andrian.tanuwijaya@trimegah.com)
Hanel Topada Era Tania	Equity Analyst	(hanel.tania@trimegah.com)
T Heldy Arifien	Technical Analyst	(heldy@trimegah.com)
Rovandi	Research Assistant	(rovandi@trimegah.com)

EQUITY CAPITAL MARKET TEAM

Nathanael Benny Prasetyo	Head of Retail ECM	(benny.prasetyo@trimegah.com)
Windra Djulnaily	Pluit, Jakarta	(windra.djulnaily@trimegah.com)
Ariawan Anwar	Artha Graha, Jakarta	(ariawan.anwar@trimegah.com)
Ferry Zabur	Kelapa Gading, Jakarta	(ferry.zabur@trimegah.com)
Wirjawan Joesoef	Mangga Dua, Jakarta	(iwan@trimegah.com)
Lukman Abdul Azis	Kebon Jeruk, Jakarta	(lukman@trimegah.com)
Tutik Suciati	Semarang, Jawa Tengah	(tuty.s@trimegah.com)
Sonny Muljadi	Surabaya, Jawa Timur	(sonny.muljadi@trimegah.com)
Ni Luh Ketut Sri Agustini	Denpasar, Bali	(sri.agustini@trimegah.com)
Philip Fernando Suwandi	Makassar, Sulawesi Selatan	(philip.fs@trimegah.com)
agus.jatmiko	Balikpapan, Kalimantan Timur	(agus.jatmiko@trimegah.com)
Asep Saepudin	Bandung, Jawa Barat	(asep.saepudin@trimegah.com)
Asep Saepudin	Cirebon, Jawa Barat	(asep.saepudin@trimegah.com)
Very Wijaya	Medan, Sumatera Utara	(very.wijaya@trimegah.com)
Tantie Rivi Watie	Pekanbaru, Riau	(tantierw@trimegah.com)
Agus Bambang Suseno	Solo, Jawa Tengah	(agus.suseno@trimegah.com)
Agus Bambang Suseno	Yogyakarta, Jawa Tengah	(agus.suseno@trimegah.com)
Donny Kristanto Setiadi	Palembang, Sumatra Selatan	(donny.kristanto@trimegah.com)
Sonny Muljadi	Malang, Jawa Timur	(sonny.muljadi@trimegah.com)

PT Trimegah Securities Tbk
18th Fl, Artha Graha Building
Jl. Jend. Sudirman Kav. 52-53
Jakarta 12190, INDONESIA
Tel : (6221) 2924 9088 Fax : (6221) 2924 9163

DISCLAIMER

This report has been prepared by PT Trimegah Securities Tbk on behalf of itself and its affiliated companies and is provided for information purposes only. Under no circumstances is it to be used or considered as an offer to sell, or a solicitation of any offer to buy. This report has been produced independently and the forecasts, opinions and expectations contained herein are entirely those of Trimegah Securities.

While all reasonable care has been taken to ensure that information contained herein is not untrue or misleading at the time of publication, Trimegah Securities makes no representation as to its accuracy or completeness and it should not be relied upon as such. This report is provided solely for the information of clients of Trimegah Securities who are expected to make their own investment decisions without reliance on this report. Neither Trimegah Securities nor any officer or employee of Trimegah Securities accept any liability whatsoever for any direct or consequential loss arising from any use of this report or its contents. Trimegah Securities and/or persons connected with it may have acted upon or used the information herein contained, or the research or analysis on which it is based, before publication. Trimegah Securities may in future participate in an offering of the company's equity securities.