

IHSG

3.706,8

86,1

2,38%

Ulisan Pasar



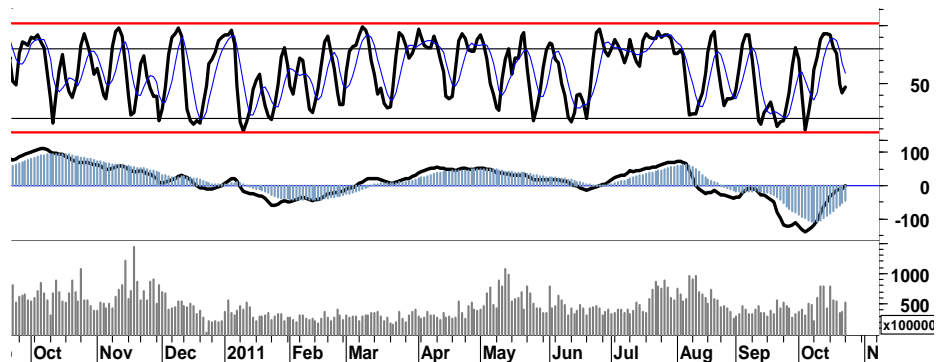
Mengawali pekan ini, IHSG mencoba kembali mencapai area 3.700 dengan membukukan penguatan sebesar 2,38% dan di tutup pada level 3.707.

Pada saat yang bersamaan, para pelaku asing melakukan akumulasi pembelian dengan membukukan nilai pembelian bersih sebesar Rp405,16miliar.

Dalam kondisi normal area Fibo Ratio 38,2% dan 50% atau setara dengan 3.602 dan 3.691, merupakan konsolidasi harga sekaligus titik penentuan pembalikan arah untuk kemudian mencapai target resisten double bottom pada kisaran 3.900 - 3.920 dengan berbasis support di level 3.580.

Pergerakan indeks acuan di Eropa berhasil bertahan pada area positif, DAX maupun CAC membukukan kenaikan masing-masing sebesar 1,4% dan 1,6%. Sementara beberapa bursa utama di Amerika seperti DJI, S&P500 serta Nasdaq ditutup menguat masing-masing sebesar 0,9%, 1,3% serta 2,4%.

Dengan demikian dapat dikatakan bahwa, pada perdagangan hari ini IHSG memiliki peluang untuk melanjutkan rally penguatan dengan menguji resistensi 3.740, serta memanfaatkan pergerakan dalam rentang harga 3.650 - 3.770.



S1	S2	R1	R2
3,650	3,585	3,740	3,780

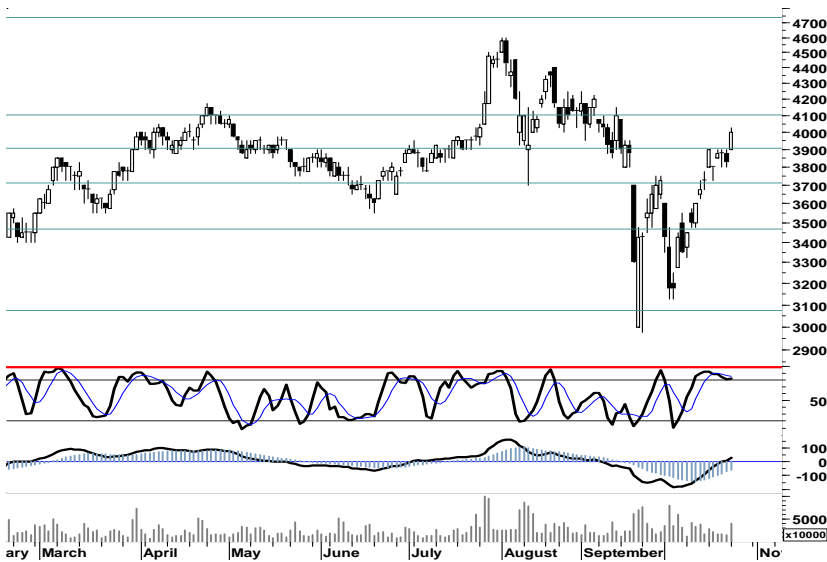
## Saham Pilihan

Saham	Harga (Rp)	Rekomendasi	Stochastic	RSI	BB Top	BB Bottom	S1	S2	R1	R2
BBCA	7,950	Trading	44.12	55.52	8,050	7,600	7,850	7,750	8,150	8,250
BBNI	4,000	Trading	82.14	59.85	4,050	3,775	3,925	3,850	4,100	4,175
BMRI	6,900	Trading	53.13	58.09	7,000	6,250	6,700	6,500	7,100	7,300
INTP	14,950	Trading	47.89	58.19	15,150	14,000	14,700	14,450	15,350	15,600
SMGR	9,350	TakeProfit	66.67	62.15	9,550	8,400	9,050	8,750	9,650	9,950
UNTR	23,950	Trading	51.76	61.04	24,100	22,500	23,400	22,850	24,550	25,100



Secara umum, BBCA berada pada kondisi Bullish, dimana basis support harga pada fibo rasio 61,8% pada level 7.500 - 7.550 cukup kuat untuk menahan saham tersebut untuk berada pada area 7.550 - 8.200.

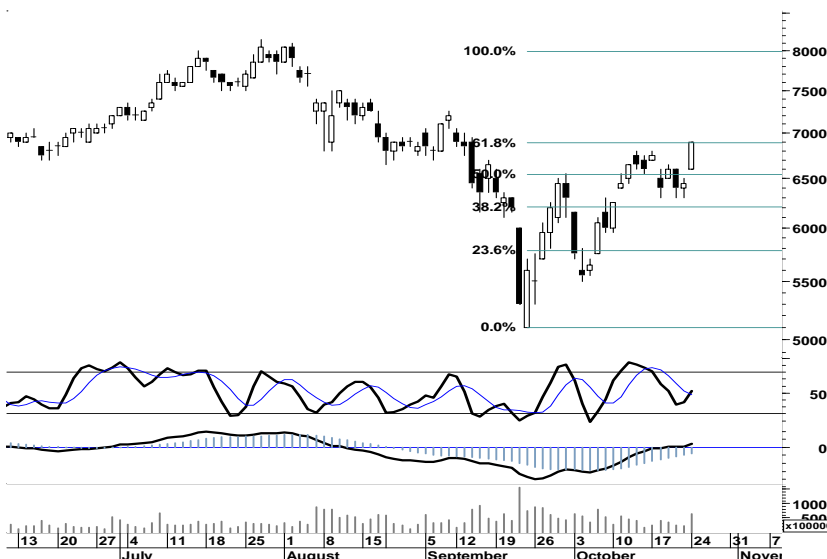
S1	S2	R1	R2
7,850	7,750	8,150	8,250



Meskipun terbatas, BBNI masih memiliki ruang untuk melanjutkan perjalanannya menuju resistensi harga selanjutnya pada level 4.100.

Waspada! potensi tekanan menguji support 3.850 yang mungkin terjadi, apabila BBNI gagal melaju untuk mencapai target resistensi berikut pada level 4.175.

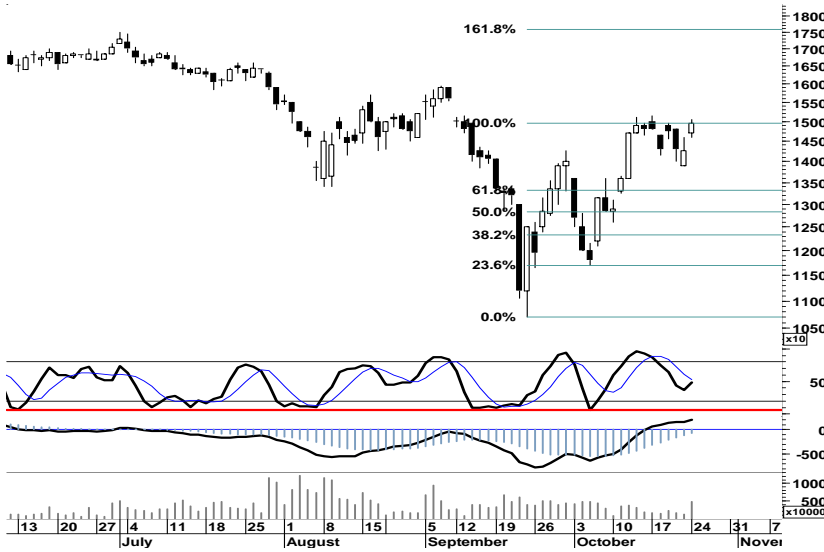
S1	S2	R1	R2
3,925	3,850	4,100	4,175



Beberapa signal positif yang masih terlihat pada chart BMRI, menunjukkan bahwa saham tersebut masih memiliki kekuatan untuk melanjutkan rally-nya.

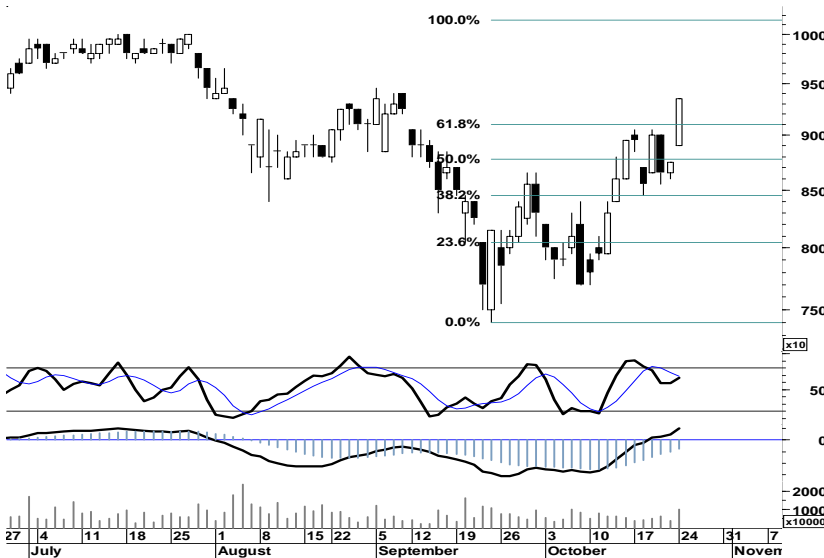
Dengan mewaspada! swing negatif menguji celah support 6.500, BMRI berpotensi melanjutkan rally penguatan menguji penetrasi 7.100.

S1	S2	R1	R2
6,700	6,500	7,100	7,300



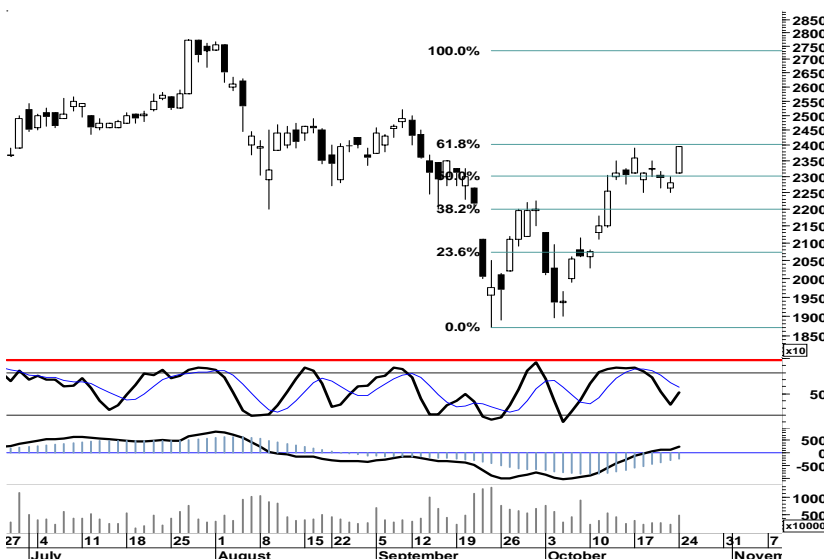
Secara umum ancaman bearish masih mewarnai pergerakan pada saham INTP. Indikasi 'golden-cross pada fast moving oscillator, diharapkan mampu mendorong INTP untuk melakukan penetrasi resistensi 15.350.

S1	S2	R1	R2
14,700	14,450	15,350	15,600



Waspadai potensi tekanan harga pada SMGR serta bayang-bayang aksi profit taking yang berpotensi menyeret SMGR menutup celah support 8.750, di saat gagal menguji penetrasi resistensi 9.500.

S1	S2	R1	R2
9,050	8,750	9,650	9,950



Signal positif pada beberapa indikator penunjang, diharapkan mampu mendorong UNTR menguji penetrasi resistensi 24.000.

Setidaknya kami melihat peluang UNTR untuk bertahan pada area positif dengan bergerak dalam interval 23.400 - 24.550.

S1	S2	R1	R2
23,400	22,850	24,550	25,100

## TRADE DATA

### JCI (IHSG) 3,706.8 86.1 2.38%

YTD (Rp)	0.1%	Volume (m) :	5,491
YTD (USD)	1.7%	Nilai (Rpbn) :	3,328
Moving Avg 20day	3,540	Mkt Cap (Rpbn) :	3,439
Moving Avg 50day	3,706	Market P/E (x) :	16.2
Moving Avg 200day	3,719	Market Div. Yield (%) :	2.4

### Indonesia & Sectors +/- (%) YTD (%)

MSCI Indonesia	4,656.7	142.1	3.15	2.42
JII	516.5	13.0	2.59	-3.08
LQ45	659.6	19.4	3.03	-0.27
JAKFIN Index	498.6	17.1	0.04	6.83
JAKINFR Index	687.2	2.6	0.00	-16.11
JAKMINE Index	2,606.6	36.8	0.01	-20.39
JAKCONS Index	1,245.3	29.3	0.02	13.76
JAKTRAD Index	513.6	8.9	0.02	8.33
JAKMIND Index	1,218.6	32.3	0.03	26.02
JAKBIND Index	385.3	15.4	0.04	-0.52
JAKPROP Index	216.1	2.1	0.01	6.41
JAKAGRI Index	2,052.3	56.9	0.03	-10.16

### Commodities +/- (%) YTD (%)

CRB Index	318.57	7.5	2.41	-4.28
<b>Oil &amp; Gas</b>				
Crude Oil	91.27	3.9	4.43	-0.12
Natural Gas	3.60	-0.0	-0.69	-18.18
COAL (Rotterdam)	117.70	1.3	1.07	-10.43
COAL (Amsterdam)	117.28	2.2	1.91	-6.88
COAL (Australia,wk)	118.80	-1.4	-1.12	-2.94
<b>Industrial Metals</b>				
Aluminium	2,205.00	91.8	4.34	-10.34
Nickel	19,995	1,195	6.36	-19.21
Tin	22,545	870	4.01	-16.19
<b>Precious Metal</b>				
Gold	1,652.30	16.2	0.99	16.24
Silver	31.64	0.5	1.45	2.37
<b>Soft Commodities</b>				
CPO (Malaysia)	2,890.00	9.0	0.31	-24.23
CPO (Netherlands)	1,015.00	10.0	1.00	-21.01
Rubber	3,776.61	162.8	4.50	-24.37
Corn	651.00	1.8	0.27	3.50
Wheat	642.50	10.5	1.66	-19.11
Soybeans	1,226.75	14.5	1.20	-11.98
Rice (Indonesia)	7,700.00	0.0	0.00	8.45

### Winners

Stock	Price	(%)	Stock	Price	(%)
BMRI	6,900	6.98	JKON	850	-15.00
SMGR	9,350	6.86	DSSA	12,600	-3.82
UNTR	23,950	5.04	BRMS	560	-3.45
EXCL	5,250	5.00	PGAS	2,825	-2.59
INTP	14,950	4.91	MLBI	331,500	-2.50
GGRM	56,700	4.61	TBIG	2,000	-2.44
BBNI	4,000	4.58	ASRI	450	-2.17
BBCA	7,950	3.92	BYAN	18,850	-1.82
BBRI	6,500	3.17	INVS	5,450	-1.80
ASII	68,050	2.95	BSDE	910	-1.09

### Losers

Stock	Price	(%)	Stock	Price	(%)
JKON	850	-15.00	ASRI	450	-2.17
DSSA	12,600	-3.82	BYAN	18,850	-1.82
BRMS	560	-3.45	INVS	5,450	-1.80
PGAS	2,825	-2.59	BSDE	910	-1.09
MLBI	331,500	-2.50			
TBIG	2,000	-2.44			
ASRI	450	-2.17			
BYAN	18,850	-1.82			
INVS	5,450	-1.80			
BSDE	910	-1.09			

### Regional Indices +/- (%) YTD (%)

MXWO	MSCI World	1,211.9	17.6	1.47	-5.33
SPX	S&P 500	1,254.2	15.9	1.29	-0.27
<b>US</b>					
Dow Jones Industrial		11,913.6	104.8	0.89	2.90
Nasdaq	US	2,699.4	62.0	2.35	1.76
<b>Europe</b>					
EURO 50	Europe	242.0	3.1	1.30	-12.25
FTSE	London	5,548.1	59.4	1.08	-5.96
DAX	Germany	6,055.3	84.3	1.41	-12.42
CAC	France	3,220.5	49.1	1.55	-15.36
SMI	Swiss	5,788.6	35.1	0.61	-10.06
<b>BRIC</b>					
BOVESPA	Brazil	56,892.0	1,636.7	2.96	-17.91
MICEX	Russia	1,482.8	35.8	2.47	-12.16
SENSEX	India	16,939.3	153.6	0.92	-17.41
NIFTY	India	5,098.4	48.4	0.96	-16.89
SHCOMP	China	2,370.3	53.1	2.29	-15.59
SZCOMP	China	977.0	17.9	1.87	-24.31

### Developed ASIA

Nikkei	Japan	8,844.0	165.1	1.90	-13.54
TPX	Japan	755.4	11.2	1.51	-15.95
HIS	Hong kong	18,771.8	746.1	4.14	-18.51
KOSPI	S. Korea	1,898.3	59.9	3.26	-7.44
TAIEX	Taiwan	7,470.3	215.8	2.97	-16.74
FSSTI	Singapore	2,761.0	48.5	1.79	-13.45

### ASEAN

SET	Thailand	916.3	0.0	0.00	-11.27
PCOMP	Philippines	4,201.1	34.5	0.83	-0.00
KLCI	Malaysia	1,450.0	11.2	0.78	-4.54
VNINDEX	Vietnam	414.5	3.4	0.83	-14.48

### Currency +/- (%) YTD (%)

EURUSD	Euro	1.393	0.003	0.24	4.07
GBPUSD	United Kingdom	1.600	0.005	0.28	2.47
USDCHF	Switzerland	0.881	-0.002	-0.19	-5.82
USDCAD	Canada	1.004	-0.003	-0.29	0.57
AUDUSD	Australia	1.048	0.010	0.95	2.36
NZDUSD	New Zealand	0.807	0.004	0.52	3.47
USDJPY	Japan	76.1	-0.190	-0.25	-6.19
USDCNY	China	6.376	-0.008	-0.12	-3.49
USDHKD	Hongkong	7.777	-0.005	-0.06	0.05
USDSGD	Singapore	1.263	-0.010	-0.76	-1.57
Rupiah	Indonesia	8,853.0	-55.000	-0.62	-1.59

### Value (Rpbn) Volume (Lot) Freq (x)

BMRI	444,391	ENRG	1,656,900	STAR	11,865
BBRI	318,060	STAR	994,391	JPRS	5,813
BUMI	275,348	ELTY	789,893	ASRI	4,528
ASII	235,677	BKSL	684,690	ENRG	4,126
TLKM	182,130	ASRI	564,554	BMRI	4,109
ADRO	164,793	BNBR	263,652	BBRI	3,853
BBNI	160,319	BUMI	242,712	BUMI	3,581
ENRG	139,986	DEWA	218,092	APIC	2,855
ASRI	131,077	KIJA	215,953	TMPI	2,819
BKSL	100,744	LPKR	186,700	SMRU	2,681

Code	Last	Ytd Chg(%)	H-5 Chg (%)	Rekomendasi	STO	RSI	MACD	Bollinger Band		Support			Resistance			H-5	
								Top	Bottom	1	2	3	1	2	3	Highest	Lowest
AALI	19,850	-25.93	1.53	Trading	71.6	54.9	(241.0)	20,100	18,800	19,600	19,350	19,200	20,000	20,150	20,400	19,900	18,500
ACES	3,400	19.30	-0.73	OverSold	33.3	56.0	35.3	3,425	3,375	3,400	3,400	3,400	3,400	3,400	3,400	3,475	3,375
ADRO	1,950	-27.10	-0.51	Trading	48.8	55.3	10.2	2,010	1,860	1,930	1,910	1,880	1,980	2,010	2,030	1,990	1,860
AISA	680	-12.82	0.00	Trading	57.1	51.2	(9.5)	695	645	670	660	650	690	700	710	690	640
ANTM	1,690	-31.72	-3.98	Trading	46.7	54.6	(0.4)	1,720	1,670	1,680	1,660	1,630	1,730	1,760	1,780	1,790	1,630
ASII	68,050	25.09	-1.38	Trading	39.9	56.2	948.8	69,700	65,600	67,500	66,950	66,600	68,400	68,750	69,300	69,500	65,400
BBCA	7,950	23.26	-1.24	Trading	44.1	55.5	23.4	8,050	7,600	7,850	7,750	7,650	8,050	8,150	8,250	8,100	7,500
BBNI	4,000	5.26	2.56	Trading	82.1	59.9	28.2	4,050	3,775	3,925	3,850	3,800	4,050	4,100	4,175	4,025	3,725
BBRI	6,500	25.60	-2.99	Trading	37.5	56.6	89.7	6,600	6,250	6,450	6,400	6,300	6,600	6,700	6,750	6,750	6,150
BDMN	4,950	-10.00	-3.88	Trading	30.0	54.2	44.2	5,075	4,825	4,925	4,900	4,825	5,025	5,100	5,125	5,200	4,800
BISI	1,010	-45.99	-0.98	Trading	33.3	50.2	(26.8)	1,030	960	1,000	990	970	1,030	1,050	1,060	1,040	960
BMRI	6,900	6.98	2.22	Trading	53.1	58.1	54.6	7,000	6,250	6,700	6,500	6,400	7,000	7,100	7,300	6,900	6,300
BSDE	910	3.41	-4.21	Trading	59.1	52.7	4.1	940	900	890	870	840	940	970	990	950	880
BTEL	290	23.40	-3.33	Trading	42.9	33.8	(12.5)	295	287	287	284	282	292	294	297	305	280
BUMI	2,225	-28.80	1.14	Trading	53.9	51.8	(42.1)	2,325	2,050	2,175	2,125	2,050	2,300	2,375	2,425	2,350	1,980
BWPT	1,190	-9.16	5.31	TakeProfit	78.4	65.1	8.2	1,210	1,110	1,170	1,140	1,120	1,220	1,240	1,270	1,210	1,050
ELTY	119	-26.09	-4.03	OverSold	31.6	50.5	(2.6)	121	113	118	116	114	122	124	126	126	112
EXCL	5,250	0.00	-0.94	OverSold	29.8	56.2	43.3	5,350	4,900	5,100	4,950	4,850	5,350	5,450	5,600	5,450	4,925
GGRM	56,700	38.12	0.98	OverSold	32.4	55.5	582.2	57,400	53,950	55,600	54,500	53,950	57,250	57,800	58,900	58,350	54,050
HEXA	7,500	3.45	2.04	Trading	55.6	53.3	(59.2)	7,550	7,250	7,400	7,250	7,150	7,650	7,750	7,900	7,600	7,200
HRUM	7,650	-19.05	-3.77	OverSold	28.6	52.4	(10.6)	7,750	7,300	7,600	7,500	7,400	7,800	7,900	8,000	7,950	7,300
INCO	3,250	-34.67	-6.47	OverSold	20.5	52.1	(32.8)	3,300	3,125	3,225	3,200	3,150	3,300	3,350	3,375	3,475	3,125
INDF	5,600	13.13	0.90	OverBought	65.6	56.4	28.8	5,750	5,300	5,550	5,450	5,400	5,700	5,750	5,850	5,700	5,150
INDY	2,600	-49.02	-8.77	OverSold	25.5	50.0	(44.8)	2,725	2,425	2,550	2,475	2,425	2,675	2,725	2,800	2,850	2,400
INTP	14,950	-6.85	1.01	Trading	47.9	58.2	238.5	15,150	14,000	14,700	14,450	14,250	15,150	15,350	15,600	15,150	13,900
ISAT	5,000	-8.26	1.01	Trading	46.7	46.7	(124.3)	5,050	4,825	4,975	4,950	4,925	5,025	5,050	5,075	5,050	4,800
ITMG	41,250	-24.03	-5.06	OverSold	25.5	51.0	(104.0)	42,700	39,150	40,800	40,300	39,950	41,650	42,000	42,500	43,450	39,150
JSMR	3,875	9.15	1.97	OverBought	79.4	54.2	(17.4)	4,000	3,650	3,850	3,800	3,750	3,950	4,000	4,050	3,950	3,625
KLBF	3,475	4.51	2.21	Trading	56.5	56.1	23.2	3,525	3,325	3,425	3,375	3,325	3,525	3,575	3,625	3,500	3,300
LSIP	2,075	-18.31	-1.19	OverSold	25.0	52.8	(13.7)	2,125	2,000	2,050	2,000	1,950	2,150	2,200	2,250	2,175	2,000
MAPI	4,775	72.07	-4.02	OverSold	24.1	56.0	99.3	4,925	4,625	4,725	4,650	4,550	4,900	5,000	5,075	5,100	4,600
PGAS	2,825	-36.87	2.73	StrongSell	88.2	53.3	16.1	3,025	2,700	2,800	2,775	2,700	2,900	2,975	3,000	2,925	2,625
PTBA	17,300	-27.77	-2.54	OverSold	30.5	54.6	12.1	17,550	16,650	17,100	16,900	16,650	17,550	17,800	18,000	17,750	16,700
RALS	670	-22.09	0.00	Trading Sell	21.4	43.5	(17.7)	695	640	20,870	20,870	20,870	20,870	20,870	20,870	700	650
SGRO	2,925	-10.00	-3.31	Trading	42.1	49.4	(44.6)	3,025	2,875	2,900	2,875	2,825	2,975	3,025	3,050	3,025	2,875
SMCB	1,870	-15.96	-2.60	Trading	44.4	53.8	3.7	1,910	1,840	1,860	1,850	1,830	1,890	1,910	1,920	1,940	1,820
SMGR	9,350	-5.08	4.47	TakeProfit	66.7	62.1	121.2	9,550	8,400	9,050	8,750	8,600	9,500	9,650	9,950	9,350	8,450
SMRA	1,140	5.56	-0.87	Trading	50.0	54.2	(1.4)	1,180	1,090	1,120	1,090	1,070	1,170	1,190	1,220	1,170	1,080
TINS	1,870	-34.39	-2.60	OverSold	39.4	51.6	(31.5)	1,890	1,820	1,860	1,850	1,830	1,890	1,910	1,920	1,920	1,810
TLKM	7,250	-9.38	2.11	OverBought	75.0	48.2	(44.3)	7,350	7,200	7,150	7,000	6,900	7,400	7,500	7,650	7,350	7,000
UNTR	23,950	-1.44	1.48	Trading	51.8	61.0	253.5	24,100	22,500	23,400	22,850	22,550	24,250	24,550	25,100	23,950	22,500
UNVR	16,150	0.62	4.53	OverBought	71.4	54.2	(87.4)	16,300	15,550	15,950	15,750	15,550	16,350	16,550	16,750	16,300	15,250

S1 = Support 1      S2 = Support 2      S3 = Support 3  
 R1 = Resisten 1      R2 = Resisten 2      R2 = Resisten 2  
 STO = Stochastic Oscillator  
 RSI = Relative Strength Index  
 MACD = Moving Average Convergence Divergence  
 H-5 = 5 hari sebelumnya

## RESEARCH TEAM

---

<b>Andrian Tanuwijaya</b>	Equity Analyst	(andrian.tanuwijaya@trimegah.com)
<b>Hanel Topada Era Tania</b>	Equity Analyst	(hanel.tania@trimegah.com)
<b>Paul Raymond Widjaja</b>	Equity Analyst	(paul.widjaja@trimegah.com)
<b>Michele Gabriela</b>	Equity Analyst	(michele.gabriela@trimegah.com)
<b>T Hedy Arifien</b>	Technical Analyst	(hedy@trimegah.com)
<b>Rovandi</b>	Research Assistant	(rovandi@trimegah.com)

## EQUITY CAPITAL MARKET TEAM

---

<b>Nathanael Benny Prasetyo</b>	Head of Retail ECM	(benny.prasetyo@trimegah.com)
<b>Windra Djulnaily</b>	Pluit, Jakarta	(windra.djulnaily@trimegah.com)
<b>Ariawan Anwar</b>	Artha Graha, Jakarta	(ariawan.anwar@trimegah.com)
<b>Ferry Zabur</b>	Kelapa Gading, Jakarta	(ferry.zabur@trimegah.com)
<b>Wirjawan Joesoef</b>	Mangga Dua, Jakarta	(iwan@trimegah.com)
<b>Lukman Abdul Azis</b>	Kebon Jeruk, Jakarta	(lukman@trimegah.com)
<b>Untung Wijaya</b>	Semarang, Jawa Tengah	(untung.wijaya@trimegah.com)
<b>Sonny Muljadi</b>	Surabaya, Jawa Timur	(sonny.muljadi@trimegah.com)
<b>Ni luh Ketut Sri Agustini</b>	Denpasar, Bali	(sri.agustini@trimegah.com)
<b>Philip Fernando Suwandi</b>	Makassar, Sulawesi Selatan	(philip.fs@trimegah.com)
<b>agus.jatmiko</b>	Balikpapan, Kalimantan Timur	(agus.jatmiko@trimegah.com)
<b>Asep Saepudin</b>	Bandung, Jawa Barat	(asep.saepudin@trimegah.com)
<b>Ariffianto</b>	Cirebon, Jawa Barat	(ariffianto@trimegah.com)
<b>Very Wijaya</b>	Medan, Sumatera Utara	(very.wijaya@trimegah.com)
<b>Tantie Rivi Watie</b>	Pekanbaru, Riau	(tantierw@trimegah.com)
<b>Agus Bambang Suseno</b>	Solo, Jawa Tengah	(agus.suseno@trimegah.com)
<b>Untung Wijaya</b>	Yogyakarta, Jawa Tengah	(untung.wijaya@trimegah.com)
<b>Donny Kristanto Setiadi</b>	Palembang, Sumatra Selatan	(donny.kristanto@trimegah.com)
<b>Rr. Putri Ayu Erikusuma</b>	Malang, Jawa Timur	(putri.ayu@trimegah.com)

**PT Trimegah Securities Tbk**  
18<sup>th</sup> Fl, Artha Graha Building  
Jl. Jend. Sudirman Kav. 52-53  
Jakarta 12190, INDONESIA  
Tel : (6221) 2924 9088 Fax : (6221) 2924 9163

## DISCLAIMER

This report has been prepared by PT Trimegah Securities Tbk on behalf of itself and its affiliated companies and is provided for information purposes only. Under no circumstances is it to be used or considered as an offer to sell, or a solicitation of any offer to buy. This report has been produced independently and the forecasts, opinions and expectations contained herein are entirely those of Trimegah Securities.

While all reasonable care has been taken to ensure that information contained herein is not untrue or misleading at the time of publication, Trimegah Securities makes no representation as to its accuracy or completeness and it should not be relied upon as such. This report is provided solely for the information of clients of Trimegah Securities who are expected to make their own investment decisions without reliance on this report. Neither Trimegah Securities nor any officer or employee of Trimegah Securities accept any liability whatsoever for any direct or consequential loss arising from any use of this report or its contents. Trimegah Securities and/or persons connected with it may have acted upon or used the information herein contained, or the research or analysis on which it is based, before publication. Trimegah Securities may in future participate in an offering of the company's equity securities.