

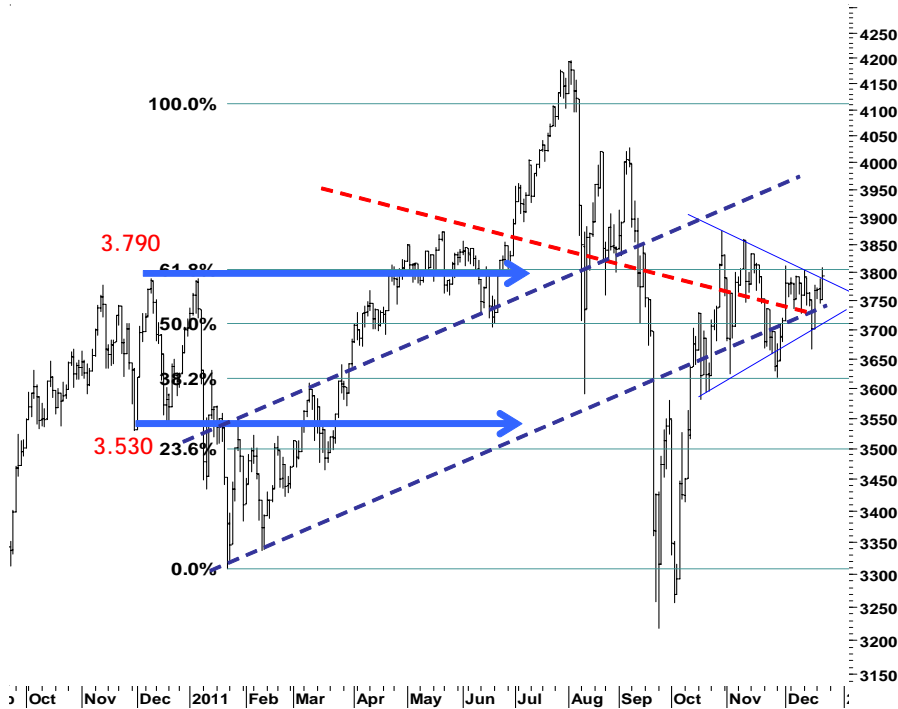
IHSG

3.794,3

41,9

1,12%

Ulisan Pasar

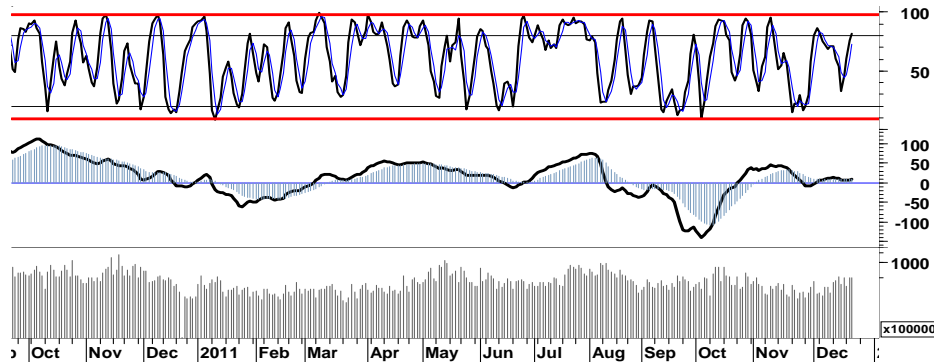


Sentimen positif melonjaknya pembangunan perumahan di Amerika serta lelang obligasi di Jerman dan Spanyol yang melampaui permintaan, merupakan katalis yang mendorong penguatan IHSG pada perdagangan kemarin. Penetrasi tren-resistensi harga 3.785 serta kembali bergerak di atas MA200, IHSG ditutup menguat 42 poin atau setara dengan 1,21% di level 3.794. Akumulasi sejumlah saham unggulan serta beberapa saham favorit, mencoba mendorong IHSG memasuki area 3.800 pada sesi pertama perdagangan dengan 1% rentang ayun harga. Para pelaku asing kemarin, membukukan nilai pembelian bersih sebesar Rp400,9 miliar.

Sementara dilain sisi, aktifitas perdagangan di bursa-bursa utama Eropa cenderung kembali tergerus dimana DAX maupun CAC ditutup terkoreksi masing-masing -0,9% dan 0,8%, Yang juga berdampak kurang baik pada bursa-bursa utama di Amerika, DJI, S&P500 dan Nasdaq terpuruk dengan membukukan masing-masing 0,03%, 0,2% dan -1,0%.

Signal positif yang muncul pada MACD di area positif stochastic (5d) yang juga masih memiliki ruang untuk memberi kesempatan terhadap IHSG melanjutkan rally penguatan menguji kembali area 3.800.

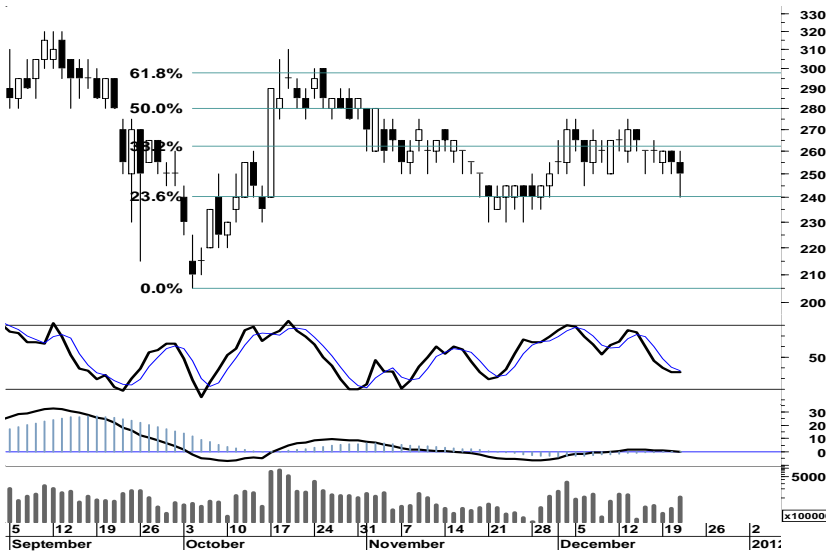
Pada perdagangan hari ini, IHSG akan mencoba bergerak dalam rentang harga 3.760 - 3.820.



S1	S2	R1	R2
3,760	3,730	3,820	3,840

Saham Pilihan

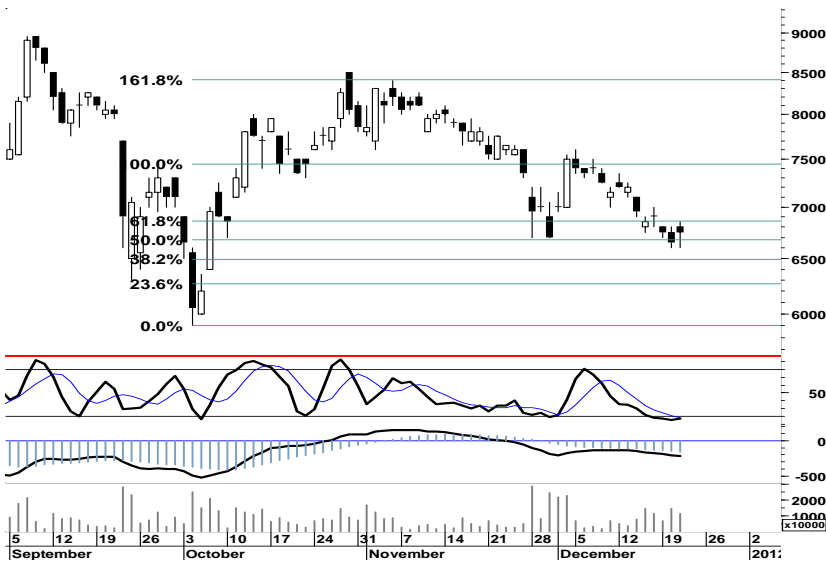
Saham	Harga (Rp)	Rekomendasi	Stochastic	RSI	BB Top	BB Bottom	S1	S2	R1	R2
BKSL	250	OverSold	35.71	41.88	264	248	240	230	270	280
HRUM	6,750	StrongBuy	17.24	38.29	6,950	6,600	6,650	6,500	7,000	7,150
JPFA	3,975	StrongBuy	3.85	25.70	4,100	3,950	3,925	3,875	4,175	4,225
PTBA	16,500	Accumulate	32.61	39.96	16,700	16,450	16,400	16,250	16,950	17,100
TINS	1,670	StrongBuy	10.00	36.26	1,730	1,630	1,660	1,640	1,720	1,740
TLKM	7,100	Trading	41.18	42.55	7,200	7,000	7,050	6,950	7,250	7,350



Ditutup pada area pivot support 250-260, BKSL memiliki peluang yang sama untuk bergerak menuju teritori positif serta konsolidasi area 240-280. Atau mewaspadaai potensi tekanan pelemahan yang akan menyeret BKSL menguji support 230.

Indikasi signal positif yang tercermin pada stochastic (5d), diharapkan mampu menjadi pendorong saham tersebut menguat menguji penetrasi 270.

S1	S2	R1	R2
240	230	270	280



Dominasi kekuatan beli yang mencoba melawan tekanan pelemahan pada HRUM, merupakan penentu arah bagi saham tersebut menguji resistensi 7.000.

Indikasi signal positif pada stochastic (5d), diharapkan mampu mewujudkan indikasi tersebut dan HRUM dapat kembali memasuki area positif dalam rentang 6.850-7.450.

S1	S2	R1	R2
6,650	6,500	7,000	7,150



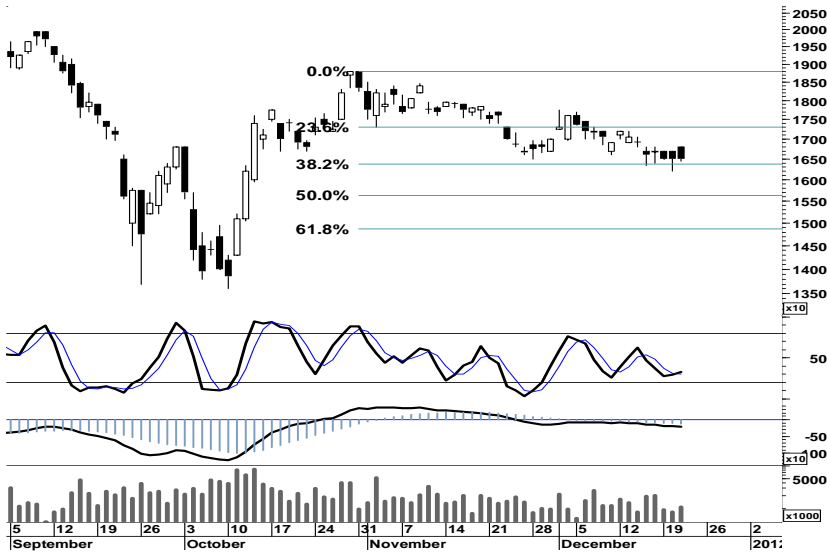
Dengan terbatasnya ruang tekanan pelemahan bagi JPFA sebagaimana tercermin dengan munculnya indikasi signal positif pada stochastic (5d), maka terbuka peluang bagi JPFA untuk menguji pembalikan arah dan resistensi harga 4.150 atau 50% Fibonacci Retracement.

S1	S2	R1	R2
3,925	3,875	4,175	4,225

PTBA

16,500

Accumulate



Meningkatnya rasio volume perdagangan kemarin serta golden cross pada stochastic (5d), membuka peluang bagi PTBA untuk tetap bertahan pada area konsolidasi 16.500 - 17.500.

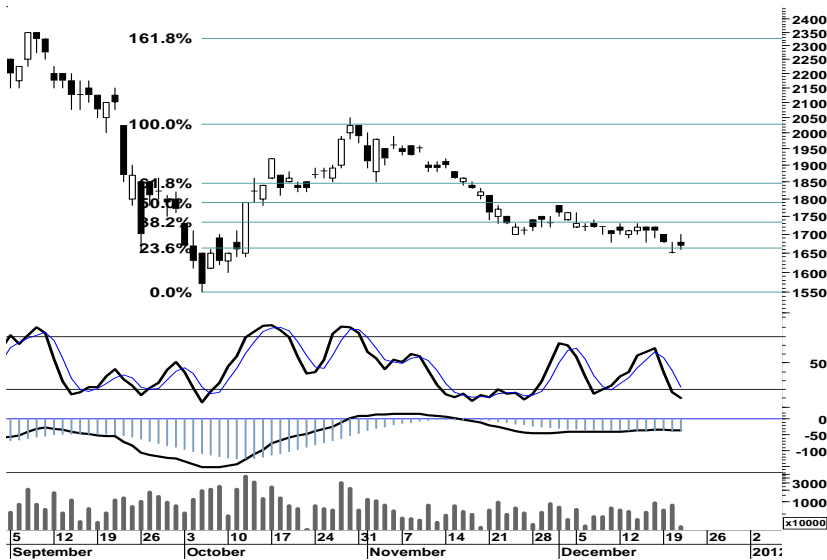
Setidaknya setiap pelamahan yang masih membayangi pergerakan harga PTBA, merupakan peluang untuk melakukan akumulasi pembelian pada setiap support 16.400 dan 16.250.

S1	S2	R1	R2
16,400	16,250	16,950	17,100

TINS

1,670

StrongBuy



Sebagaimana tercermin pada stochastic (5d), dimana ruang tekanan sudah terbatas. Maka terbuka peluang bagi TINS untuk melakukan pembalikan arah dengan basis support 1.650.

Dengan menentukan stop-loss harga pada level 1.650, TINS diperkirakan akan bergerak mix positif dalam rentang 1.640 - 1.720.

S1	S2	R1	R2
1,660	1,640	1,720	1,740

TLKM

7,100

Trading



Support kuat 7.000 dan signal positif pada leading indicator yang ada, merupakan peluang bagi TLKM untuk bergerak dalam teritori positif perdagangan di antara 7.050 dan 7.250.

S1	S2	R1	R2
7,050	6,950	7,250	7,350

TRADE DATA

JCI (IHSG) 3,794.3 41.9 1.12%

YTD (Rp)	2.5%	Volume (m) :	5,595
YTD (USD)	0.7%	Nilai (Rpbn) :	3,328
Moving Avg 20day	3,745	Mkt Cap (Rpbn) :	3,439
Moving Avg 50day	3,743	Market P/E (x) :	16.2
Moving Avg 200day	3,772	Market Div. Yield (%) :	2.4

Indonesia & Sectors +/- (%) YTD (%)

MSCI Indonesia	4,746.2	59.2	1.26	4.39
JII	530.0	8.9	1.70	-0.54
LQ45	670.0	8.0	1.21	1.31
JAKFIN Index	497.6	2.6	0.01	6.62
JAKINFR Index	692.7	9.4	0.01	-15.44
JAKMINE Index	2,491.5	23.0	0.01	-23.91
JAKCONS Index	1,296.4	7.2	0.01	18.43
JAKTRAD Index	569.2	11.2	0.02	20.07
JAKMIND Index	1,293.2	18.4	0.01	33.73
JAKBIND Index	402.0	5.8	0.01	3.82
JAKPROP Index	230.8	5.1	0.02	13.63
JAKAGRI Index	2,127.7	29.4	0.01	-6.86

Commodities +/- (%) YTD (%)

CRB Index	303.90	2.2	0.74	-8.68
Oil & Gas				
Crude Oil	98.67	1.5	1.49	7.98
Natural Gas	3.16	0.0	0.86	-28.38
COAL (Rotterdam)	111.80	0.6	0.54	-14.92
COAL (Amsterdam)	111.75	0.8	0.68	-11.27
COAL (Australia,wk)	108.95	0.0	0.00	-10.99
Industrial Metals				
Alumunium	1,972.00	-14.0	-0.70	-19.81
Nickel	18,975	110	0.58	-23.33
Tin	19,200	200	1.05	-28.62
Prescious Metal				
Gold	1,613.60	-4.0	-0.25	13.52
Silver	29.20	-0.3	-0.97	-5.53
Soft Commodities				
CPO (Malaysia)	3,074.00	54.0	1.79	-19.40
CPO (Netherlands)	1,000.00	-15.0	-1.48	-22.18
Rubber	3,348.71	99.3	3.05	-32.94
Corn	616.50	9.5	1.57	-1.99
Wheat	617.00	9.3	1.52	-22.32
Soybeans	1,153.75	9.3	0.81	-17.22
Rice (Indonesia)	8,000.00	0.0	0.00	12.68

Winners

Stock	Price	(%)	Stock	Price	(%)
EMTK	2,950	10.28	GIAA	460	-4.17
INTP	16,850	3.37	BTEL	245	-2.00
SMGR	10,900	2.83	BKSL	250	-1.96
PGAS	3,225	2.38	GJTL	2,975	-1.65
UNTR	25,400	2.21	AUTO	3,150	-1.56
ASII	73,050	1.88	GGRM	61,950	-0.88
BBRI	7,000	1.45	BTPN	3,300	-0.75
TLKM	7,100	1.43	KLBF	3,375	-0.74
UNVR	18,200	1.39	BBNI	3,875	-0.64
BBCA	7,950	0.63	BYAN	17,750	-0.28

Losers

Stock	Price	(%)	Stock	Price	(%)
GIAA	460	-4.17	BTEL	245	-2.00
BTEL	245	-2.00	BKSL	250	-1.96
BKSL	250	-1.96	GJTL	2,975	-1.65
GJTL	2,975	-1.65	AUTO	3,150	-1.56
AUTO	3,150	-1.56	GGRM	61,950	-0.88
GGRM	61,950	-0.88	BTPN	3,300	-0.75
BTPN	3,300	-0.75	KLBF	3,375	-0.74
KLBF	3,375	-0.74	BBNI	3,875	-0.64
BBNI	3,875	-0.64	BYAN	17,750	-0.28
BYAN	17,750	-0.28			

Regional Indices +/- (%) YTD (%)

MXWO	MSCI Word	1,164.2	0.3	0.02	-9.05
SPX	S&P 500	1,243.7	2.4	0.19	-1.11
US					
Dow Jones Industrial		12,107.7	4.2	0.03	4.58
Nasdaq	US	2,578.0	-25.8	-0.99	-2.82
Europe					
EURO 50	Europe	237.3	-1.2	-0.51	-13.97
FTSE	London	5,389.7	-29.9	-0.55	-8.65
DAX	Jerma	5,791.5	-55.5	-0.95	-16.24
CAC	France	3,030.5	-24.9	-0.82	-20.35
SMI	Swiss	5,804.8	0.5	0.01	-9.81
BRIC					
BOVESPA	Brazil	56,653.4	-211.5	-0.37	-18.25
MICEX	Russia	1,385.2	-24.7	-1.75	-17.94
SENSEX	India	15,685.2	510.1	3.36	-23.52
NIFTY	India	4,693.2	149.0	3.28	-23.50
SHCOMP	China	2,191.1	-24.8	-1.12	-21.97
SZCOMP	China	888.2	-20.9	-2.30	-31.20

Developed ASIA

Nikkei	Japan	8,460.0	123.5	1.48	-17.29
TPX	Japan	725.7	7.2	1.00	-19.26
HIS	Hong kong	18,416.5	336.3	1.86	-20.05
KOSPI	S.Korea	1,848.4	55.4	3.09	-9.88
TAIEX	Taiwan	6,966.5	303.8	4.56	-22.36
FSSTI	Singapore	2,673.3	58.9	2.25	-16.20

ASEAN

SET	Thailand	1,043.8	10.5	1.01	1.06
PCOMP	Philippines	4,368.9	26.7	0.61	3.99
KLCI	Malaysia	1,485.0	19.8	1.35	-2.23
VNINDEX	Vietnam	367.7	2.1	0.56	-24.13

Currency +/- (%) YTD (%)

EURUSD	Euro	1.305	-0.004	-0.27	-2.52
GBPUSD	United Kingdom	1.568	0.001	0.08	0.41
USDCHE	Switzerland	0.936	0.004	0.43	0.05
USDCAD	Canada	1.027	-0.003	-0.31	2.87
AUDUSD	Australia	1.010	0.002	0.23	-1.27
NZDUSD	New Zealand	0.770	0.002	0.33	-1.26
USDJPY	Japan	78.1	0.170	0.22	-3.77
USDCNY	China	6.339	-0.008	-0.12	-4.05
USDHKD	Hongkong	7.780	-0.002	-0.02	0.09
USDSGD	Singapore	1.296	-0.002	-0.14	0.96
Rupiah	Indonesia	9,071.0	-9.000	-0.10	0.83

Value

Value (Rpbn)	Volume (Lot)	Freq (x)
BMRI 232,489	ENRG 2,638,260	TMPI 14,219
ENRG 231,591	TMPI 581,473	ENRG 5,588
ASII 181,512	ELTY 347,952	MNCN 3,344
TLKM 171,704	BIPI 283,789	BHIT 3,133
BBRI 155,729	AISA 217,721	TIFA 2,923
INTP 131,774	ASRI 209,484	AISA 2,903
ADRO 123,824	BKSL 208,561	BAJA 2,723
BBCA 109,883	LPKR 205,393	ADRO 2,701
BUMI 82,905	MYRX 196,304	JPRS 2,479
HRUM 73,907	DEWA 166,459	BIPI 2,439

Code	Last	Ytd Chg(%)	H-5 Chg (%)	Rekomendasi	STO	RSI	MACD	Bollinger Band		Support			Resistance			H-5	
								Top	Bottom	1	2	3	1	2	3	Highest	Lowest
AALI	21,150	-21.08	1.93	OverSold	38.5	49.5	(130.9)	21,300	20,450	20,850	20,550	20,300	21,400	21,650	21,950	21,300	20,500
ACES	3,900	36.84	0.00	OverBought	75.0	58.6	63.4	3,975	3,800	3,900	3,900	3,900	3,900	3,900	3,900	3,900	3,750
ADRO	1,760	-34.21	-5.38	Trading	11.6	34.8	(47.5)	1,860	1,700	1,750	1,730	1,710	1,790	1,810	1,830	1,900	1,730
AISA	530	-32.05	-5.36	Trading	45.3	38.8	(22.6)	580	470	490	450	415	565	600	640	570	440
ANTM	1,610	-34.95	-0.62	Trading	41.2	41.8	(17.7)	1,620	1,600	1,610	1,600	1,590	1,630	1,640	1,650	1,640	1,580
ASII	73,050	34.28	1.46	Trading	66.5	55.9	684.9	74,700	69,350	72,550	72,050	71,700	73,400	73,750	74,250	74,800	68,300
ASRI	470	54.10	3.30	TakeProfit	87.5	60.6	5.2	478	449	462	454	447	477	484	492	475	440
BBCA	7,950	23.26	0.63	Trading	42.4	52.6	12.2	8,100	7,800	7,900	7,850	7,750	8,050	8,150	8,200	8,250	7,700
BBNI	3,875	1.97	0.65	OverBought	71.4	51.2	3.7	3,975	3,800	3,850	3,825	3,750	3,950	4,025	4,050	3,975	3,675
BBRI	7,000	35.27	6.06	StrongSell	97.1	63.4	48.5	7,250	6,550	6,950	6,850	6,800	7,100	7,150	7,250	7,050	6,350
BDMN	4,175	-24.09	-2.34	Trading	37.0	32.3	(117.6)	4,250	4,150	4,150	4,125	4,075	4,225	4,275	4,300	4,300	4,100
BISI	910	-51.34	1.11	Trading	40.0	52.5	(6.9)	915	890	890	870	860	920	930	950	930	880
BKSL	250	131.48	-5.66	OverSold	35.7	41.9	(1.0)	264	248	240	230	220	260	270	280	270	240
BMRI	6,850	6.20	6.20	StrongSell	90.5	57.4	(7.7)	7,100	6,500	6,800	6,700	6,600	7,000	7,100	7,200	7,000	6,200
BSDE	990	12.50	4.21	TakeProfit	75.9	60.5	14.4	1,030	935	980	970	960	1,000	1,010	1,020	1,010	920
BTEL	245	4.26	-5.77	Accumulate	27.3	32.1	(5.6)	260	240	240	235	230	250	255	260	260	240
BUMI	2,200	-29.60	-1.12	Trading	44.4	53.7	12.0	2,275	2,150	2,150	2,100	2,050	2,250	2,300	2,350	2,275	2,125
BWPT	1,110	-15.27	-3.48	Trading	23.8	38.8	(9.1)	1,180	1,080	1,110	1,100	1,090	1,130	1,140	1,150	1,170	1,090
CPIN	2,275	27.09	-1.09	OverBought	66.7	40.8	(58.2)	2,350	2,250	2,225	2,175	2,125	2,325	2,375	2,425	2,350	2,175
ELTY	123	-23.60	0.00	TakeProfit	60.0	65.8	2.9	125	121	122	121	119	125	127	128	128	113
EXCL	4,300	-18.10	-4.44	Accumulate	21.6	35.6	(145.4)	4,425	4,175	4,250	4,200	4,150	4,350	4,400	4,450	4,525	4,150
GGRM	61,950	50.91	-0.08	OverBought	76.6	51.0	285.8	63,350	60,750	61,350	60,750	59,700	63,000	64,050	64,650	63,450	59,700
HEXA	8,650	19.31	0.00	TakeProfit	63.6	63.8	131.6	8,750	8,600	8,650	8,650	8,650	8,650	8,650	8,650	8,750	8,550
HRUM	6,750	-28.57	-2.88	StrongBuy	17.2	38.3	(208.9)	6,950	6,600	6,650	6,500	6,400	6,900	7,000	7,150	7,100	6,600
INCO	3,050	-38.69	-1.61	Trading	41.2	43.4	(55.7)	3,100	3,000	3,025	3,000	2,975	3,075	3,100	3,125	3,125	2,975
INDF	4,650	-6.06	1.64	Trading	50.0	41.4	(101.0)	4,675	4,525	4,600	4,525	4,500	4,700	4,725	4,800	4,650	4,500
INDY	2,100	-58.82	-1.18	OverSold	33.3	40.9	(65.5)	2,150	2,050	2,075	2,050	2,025	2,125	2,150	2,175	2,150	2,050
INTP	16,850	4.98	3.69	TakeProfit	63.1	66.2	343.4	17,050	15,900	16,700	16,500	16,400	17,000	17,100	17,300	16,900	15,900
ISAT	5,400	-0.92	2.86	Trading	47.4	52.4	36.2	5,500	5,250	5,350	5,250	5,150	5,550	5,650	5,750	5,550	5,200
ITMG	37,900	-30.20	2.85	StrongSell	80.1	44.0	(1,085.2)	38,750	36,200	37,750	37,550	37,300	38,200	38,450	38,650	38,250	34,950
JPFA	3,975	25.20	-4.79	StrongBuy	3.8	25.7	(163.0)	4,100	3,950	3,925	3,875	3,775	4,075	4,175	4,225	4,200	3,950
JSMR	4,200	18.31	-1.18	Trading	41.7	62.8	83.7	4,250	4,100	4,150	4,100	4,075	4,225	4,250	4,300	4,275	4,075
KLBF	3,375	1.50	-1.46	Trading	55.6	43.6	(20.4)	3,450	3,350	3,350	3,325	3,275	3,425	3,475	3,500	3,450	3,300
LSIP	2,175	-14.37	1.16	Trading	45.0	44.9	(23.6)	2,200	2,125	2,150	2,125	2,100	2,200	2,225	2,250	2,225	2,075
MAIN	940	-69.68	3.30	OverBought	70.6	49.3	(11.4)	960	905	920	900	880	960	980	1,000	960	890
MAPI	5,200	87.39	2.97	Trading	42.9	51.3	(18.2)	5,400	4,900	5,100	5,000	4,950	5,250	5,300	5,400	5,300	4,950
MBAI	11,850	-24.52	-7.06	StrongBuy	7.0	36.3	(177.9)	12,650	11,300	11,850	11,850	11,850	11,850	11,850	11,850	12,750	11,800
PGAS	3,225	-27.93	3.20	StrongSell	90.9	60.8	30.2	3,275	3,050	3,200	3,175	3,150	3,250	3,275	3,300	3,225	3,000
PTBA	16,500	-31.11	-2.37	Accumulate	32.6	40.0	(218.8)	16,700	16,450	16,400	16,250	16,050	16,750	16,950	17,100	17,050	16,200
RALS	740	-96.45	25.42	StrongSell	88.6	76.1	16.6	785	605	690	640	610	770	800	850	750	570
SGRO	3,000	-7.69	0.84	Trading	50.0	52.7	(9.7)	3,025	2,925	2,975	2,950	2,925	3,025	3,050	3,075	3,025	2,900
SIPD	52	-29.73	-3.70	Accumulate	20.0	39.2	(0.9)	54	51	51	50	49	53	54	55	56	51
SMCB	2,200	-1.12	1.15	Trading	54.5	73.2	79.9	2,250	2,175	2,175	2,150	2,125	2,225	2,250	2,275	2,275	2,100
SMGR	10,900	10.66	1.40	TakeProfit	75.0	68.1	400.2	11,200	10,250	10,750	10,550	10,450	11,050	11,150	11,350	11,100	10,000
SMRA	1,210	12.04	1.68	Trading	44.4	60.8	24.7	1,260	1,130	1,200	1,190	1,170	1,230	1,250	1,260	1,250	1,130
SSIA	690	-23.33	13.11	StrongSell	90.5	83.5	71.1	730	615	665	640	625	705	720	745	700	550
TINS	1,670	-41.40	-2.91	StrongBuy	10.0	36.3	(35.9)	1,730	1,630	1,660	1,640	1,620	1,700	1,720	1,740	1,730	1,650
TLKM	7,100	-11.25	0.00	Trading	41.2	42.6	(80.8)	7,200	7,000	7,050	6,950	6,900	7,200	7,250	7,350	7,200	6,900
UNTR	25,400	4.53	2.83	StrongSell	82.4	55.5	97.1	26,100	24,150	25,200	25,000	24,850	25,550	25,700	25,900	25,450	23,900
UNVR	18,200	13.40	3.41	TakeProfit	67.0	61.6	328.1	18,800	17,250	17,900	17,600	17,150	18,650	19,100	19,400	18,750	17,100

S1 = Support 1 S2 = Support 2 S3 = Support 3
 R1 = Resisten 1 R2 = Resisten 2 R2 = Resisten 2
 STO = Stochastic Oscillator
 RSI = Relative Strength Index
 MACD = Moving Average Convergence Divergence
 H-5 = 5 hari sebelumnya

RESEARCH TEAM

Michele Gabriela	Equity Analyst	(michele.gabriela@trimegah.com)
T Heldy Arifien	Technical Analyst	(heldy@trimegah.com)
Rovandi	Research Assistant	(rovandi@trimegah.com)

EQUITY CAPITAL MARKET TEAM

Nathanael Benny Prasetyo	Head of Retail ECM	(benny.prasetyo@trimegah.com)
Windra Djulnaily	Pluit, Jakarta	(windra.djulnaily@trimegah.com)
Ariawan Anwar	Artha Graha, Jakarta	(ariawan.anwar@trimegah.com)
Ferry Zabur	Kelapa Gading, Jakarta	(ferry.zabur@trimegah.com)
Wirjawan Joesoef	Mangga Dua, Jakarta	(iwan@trimegah.com)
Very Wijaya	Kebon Jeruk, Jakarta	(very.wijaya@trimegah.com)
Untung Wijaya	Semarang, Jawa Tengah	(untung.wijaya@trimegah.com)
Sonny Muljadi	Surabaya, Jawa Timur	(sonny.muljadi@trimegah.com)
Ni Made Dwi Hapsari Wijayanti	Denpasar, Bali	(dwihapsari.wijayanti@trimegah.com)
Philip Fernando Suwandi	Makassar, Sulawesi Selatan	(philip.fs@trimegah.com)
Agus Jatmiko	Balikpapan, Kalimantan Timur	(agus.jatmiko@trimegah.com)
Asep Saepudin	Bandung, Jawa Barat	(asep.saepudin@trimegah.com)
Ariffianto	Cirebon, Jawa Barat	(ariffianto@trimegah.com)
Juliana Effendy	Medan, Sumatera Utara	(juliana.effendi@trimegah.com)
Tantie Rivi Watie	Pekanbaru, Riau	(tantierw@trimegah.com)
Agus Bambang Suseno	Solo, Jawa Tengah	(agus.suseno@trimegah.com)
Untung Wijaya	Yogyakarta, Jawa Tengah	(untung.wijaya@trimegah.com)
Donny Kristanto Setiadi	Palembang, Sumatra Selatan	(donny.kristanto@trimegah.com)
Rr. Putri Ayu Erikusuma	Malang, Jawa Timur	(putri.ayu@trimegah.com)

PT Trimegah Securities Tbk
18th Fl, Artha Graha Building
Jl. Jend. Sudirman Kav. 52-53
Jakarta 12190, INDONESIA
Tel : (6221) 2924 9088 Fax : (6221) 2924 9163

DISCLAIMER

This report has been prepared by PT Trimegah Securities Tbk on behalf of itself and its affiliated companies and is provided for information purposes only. Under no circumstances is it to be used or considered as an offer to sell, or a solicitation of any offer to buy. This report has been produced independently and the forecasts, opinions and expectations contained herein are entirely those of Trimegah Securities.

While all reasonable care has been taken to ensure that information contained herein is not untrue or misleading at the time of publication, Trimegah Securities makes no representation as to its accuracy or completeness and it should not be relied upon as such. This report is provided solely for the information of clients of Trimegah Securities who are expected to make their own investment decisions without reliance on this report. Neither Trimegah Securities nor any officer or employee of Trimegah Securities accept any liability whatsoever for any direct or consequential loss arising from any use of this report or its contents. Trimegah Securities and/or persons connected with it may have acted upon or used the information herein contained, or the research or analysis on which it is based, before publication. Trimegah Securities may in future participate in an offering of the company's equity securities.