

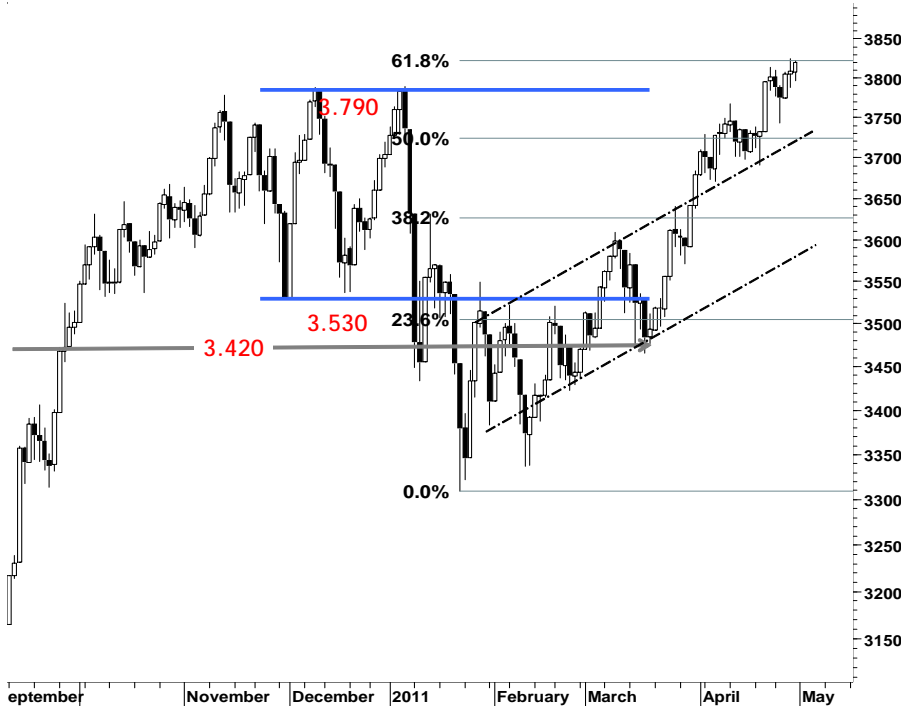
IHSG

3.819,6

10,7

0,28%

Ulisan Pasar



Ditengah maraknya sentimen positif dari kinerja keuangan emiten yang muncul, IHSG pada perdagangan kemarin kembali mencoba bertahan pada area positif konsolidasi dengan ditutup menguat 0,28% di level 3.820. Juga di ikuti oleh aksi beli asing yang mencatat posisi pembelian bersih sebesar Rp600,010m.

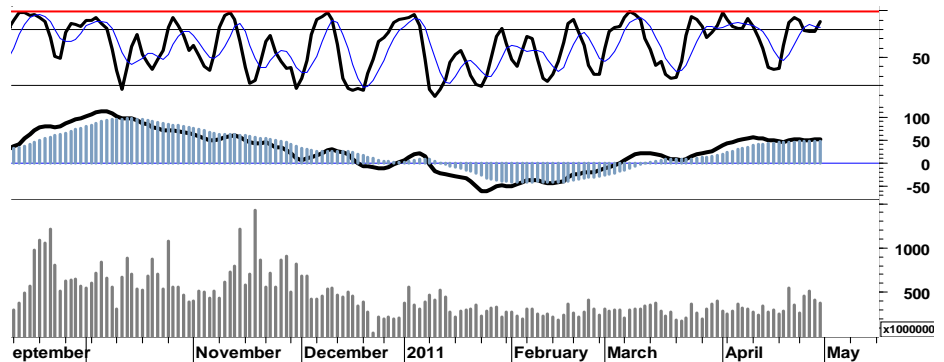
Namun demikian Sejumlah saham unggulan justru mengalami tekanan jual sebagai dampak dari aksi profit taking, terutama saham emiten pada sektor perbankan. Beberapa saham emiten dengan kapitalisasi besar yang mencatatkan kondisi kinerja keuangan kuartal pertama yang positif seperti ASII, serta beberapa saham unggulan yang berhasil menahan laju tekanan pelemahan merubah indikasi death-cross menjadi positif pada area overbought stochastic.

Untuk dapat bertahan pada kondisi positif serta melanjutkan rally penguatannya, IHSG membutuhkan lebih dari sekedar katalis positif

yang mungkin diperoleh melalui sentimen penguatan DJI pada penutupan akhir pekan lalu yang berhasil melanjutkan penguatannya dengan ditutup positif di level 12.811.

Masih tersedianya ruang untuk melanjutkan penguatan di area overbought stochastic, membuka peluang bagi IHSG untuk melanjutkan rally serta melakukan penetrasi resistensi harga di area fibo ratio 62% di level 3.825.

S1	S2	R1	R2
3,805	3,785	3,830	3,840



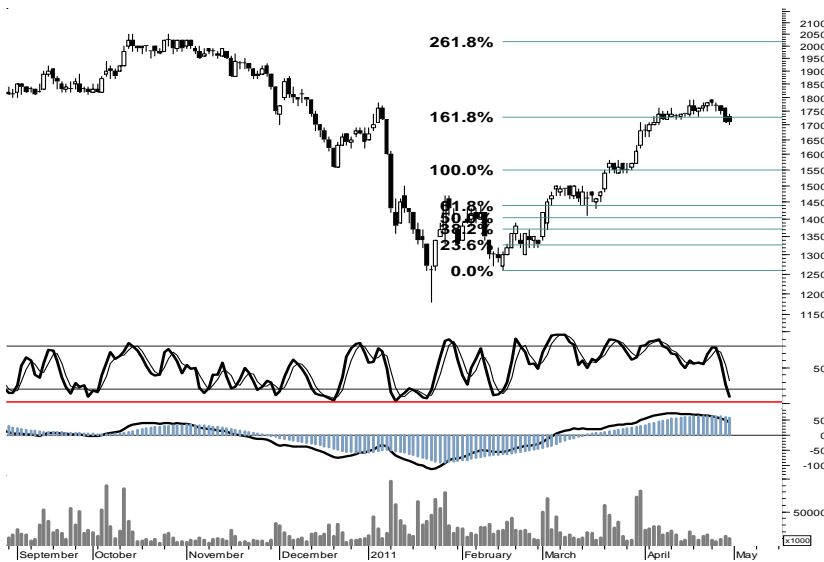
Saham Pilihan

Saham	Harga (Rp)	Rekomendasi	Stochastic	RSI	BB Top	BB Bottom	S1	S2	R1	R2
ASII	56,150	StrongSell	80.14	54.66	56,850	54,100	55,850	55,550	56,650	56,950
BBTN	1,710	StrongBuy	9.09	56.49	1,790	1,680	1,700	1,680	1,760	1,780
BISI	1,670	OverSold	24.07	48.68	1,770	1,620	1,660	1,650	1,710	1,720
GGRM	40,600	StrongBuy	19.23	51.94	40,900	40,050	40,250	39,900	41,000	41,350
ITMG	46,800	StrongBuy	12.20	45.01	47,550	46,550	46,550	46,300	47,600	47,850
SMGR	9,500	Trading	40.00	56.74	9,600	9,450	9,450	9,350	9,650	9,750



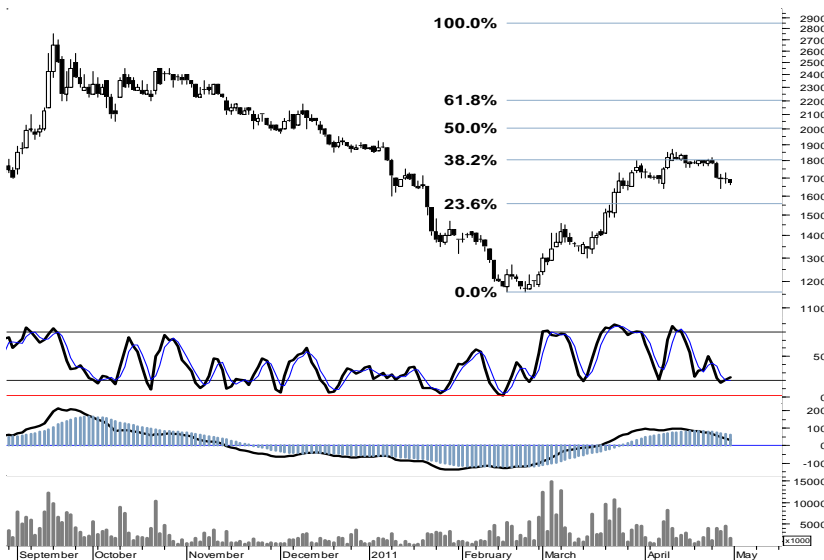
Signal positif stochastic serta masih tersedianya ruang untuk melanjutkan rally penguatannya, ASII memiliki peluang untuk bergerak positif pada area overbought leading indicator menguji resistensi harga 56.650.

S1	S2	R1	R2
55,850	55,550	56,650	56,950



Terbatasnya ruang penyempitan pada area oversold stochastic, diharapkan mampu merubah arah trend BBTN untuk kembali menguji resistensi di level 1.760.

S1	S2	R1	R2
1,700	1,680	1,760	1,780



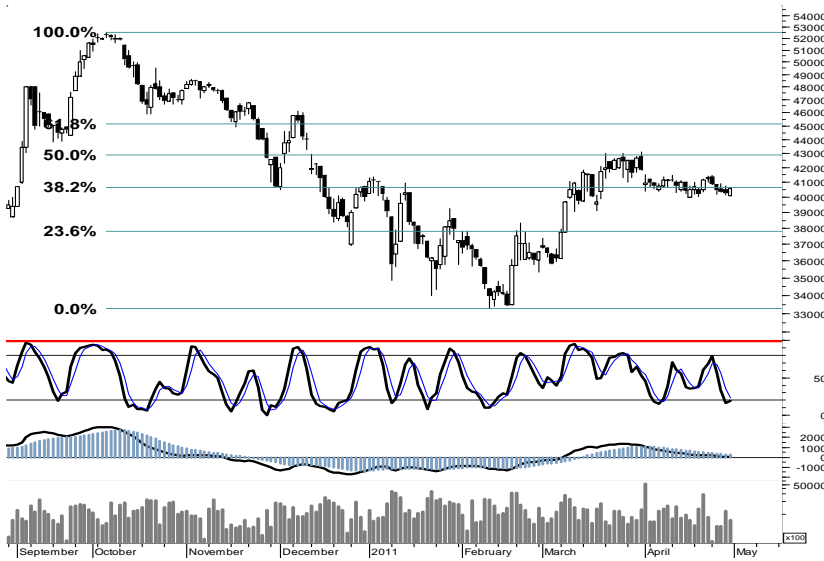
Indikasi golden cross kemarin, diharapkan mampu mendorong BISI menguji resistensi harga 1.800 kembali.

S1	S2	R1	R2
1,660	1,650	1,710	1,720

GGRM

40,600

StrongBuy



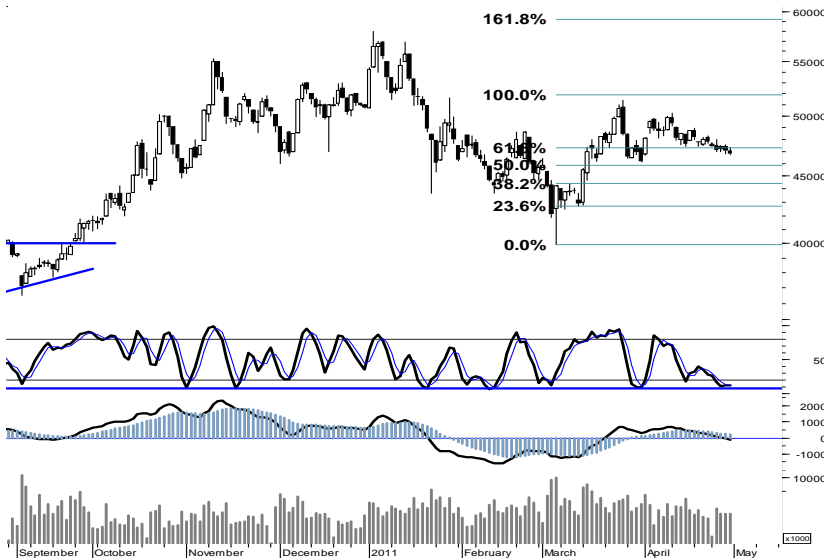
Untuk dapat keluar dari area konsolidasi stochastic dengan dukungan signal positif-nya, GGRM di harapkan mampu untuk bergerak menguji resistensi harga 41.250.

S1	S2	R1	R2
40,250	39,900	41,000	41,350

ITMG

46,800

StrongBuy



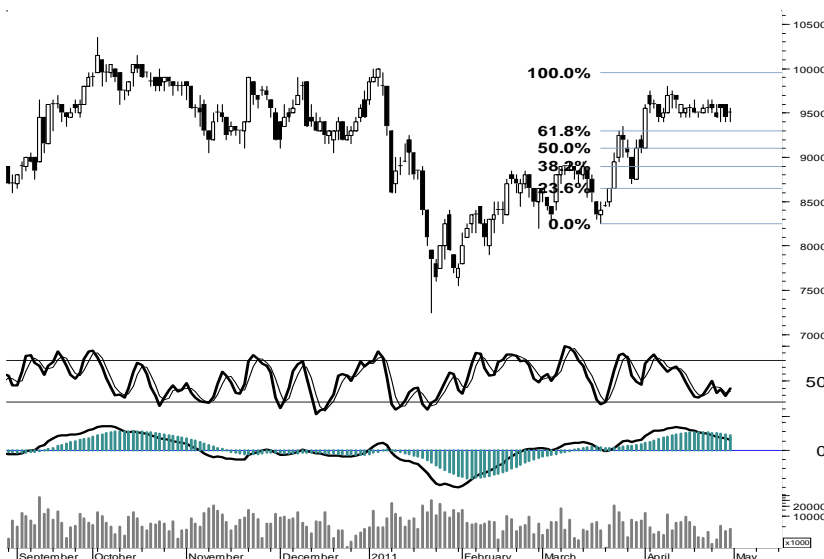
Dengan memperketat stop-loss harga di level 45.900, ITMG memiliki peluang untuk bergerak dalam interval harga 46.200 - 48.000.

S1	S2	R1	R2
46,550	46,300	47,600	47,850

SMGR

9,500

Trading



SMGR memiliki peluang untuk bertahan pada area konsolidasi 9.400 - 9.650, dengan berbasis support 9.400 serta di harapkan mampu menguji ruang pergerakan 9.450 - 9.750.

S1	S2	R1	R2
9,450	9,350	9,650	9,750

TRADE DATA

JCI (IHSG) 3,819.6 10.7 0.28%

YTD (Rp)	3.1%	Volume (m) :	4,237
YTD (USD)	8.2%	Nilai (Rpbn) :	4,418
Moving Avg 20day	3,749	Mkt Cap (Rptr) :	3,404
Moving Avg 50day	3,622	Market P/E (x) :	16.3
Moving Avg 200day	3,472	Market Div. Yield (%) :	2.4

Indonesia & Sectors +/- (%) YTD (%)

MSCI Indonesia	4746.46	-0.8	-0.02	4.40
JII	528.76	0.6	0.12	-0.78
LQ45	680.63	-0.3	-0.04	2.91
JAKFIN Index	511.42	0.2	0.00	9.59
JAKINFR Index	799.73	5.3	0.01	-2.38
JAKMINE Index	3257.34	1.6	0.00	-0.51
JAKCONS Index	1118.38	0.9	0.00	2.17
JAKTRAD Index	497.36	3.9	0.01	4.91
JAKMIND Index	1008.97	9.7	0.01	4.34
JAKBIND Index	400.51	-1.4	-0.00	3.42
JAKPROP Index	0.00	-208.3	-1.00	-100.00
JAKAGRI Index	2201.93	23.9	0.01	-3.61

Commodities +/- (%) YTD (%)

CRB Index	370.56	4.3	1.16	11.35
Oil & Gas				
Crude Oil	113.93	1.1	0.95	24.68
Natural Gas	4.70	0.1	2.78	6.65
COAL (Rotterdam)	128.45	0.0	0.00	-2.25
COAL (Amsterdam)	128.75	0.0	0.00	2.22
COAL (Australia,wk)	122.80	0.0	0.00	0.33
Industrial Metals				
Aluminium	2,763.75	0.0	0.00	12.38
Nickel	26,850	0	0.00	8.48
Tin	32,050	0	0.00	19.14
Precious Metal				
Gold	1,556.40	25.2	1.65	9.50
Silver	48.58	1.1	2.24	57.18
Soft Commodities				
CPO (Malaysia)	3,370.00	-21.0	-0.62	-11.64
CPO (Netherlands)	1,137.50	-7.5	-0.66	-11.48
Rubber	5,407.07	23.2	0.43	8.27
Corn	754.00	31.0	4.29	19.87
Wheat	769.25	26.3	3.53	-3.15
Soybeans	1,392.75	42.5	3.15	-0.07
Rice (Indonesia)	6,600.00	0.0	0.00	-7.04

Winners

Stock	Price	(%)	Stock	Price	(%)
SMMA	2,800	19.15	BBCA	7,400	-2.63
PLIN	2,900	16.00	KRAS	1,140	-2.56
MEGA	3,800	10.95	BTPN	2,975	-2.46
DSSA	27,000	4.25	BBRI	6,450	-1.53
ISAT	5,350	2.88	INCO	4,975	-1.49
BUMI	3,425	2.24	ADRO	2,200	-1.12
BMRI	7,150	1.42	CPIN	1,930	-1.03
ASII	56,150	0.99	INDF	5,550	-0.89
GGRM	40,600	0.87	INTP	17,000	-0.58
TLKM	7,700	0.65	UNTR	23,250	-0.43

Losers

Stock	Price	(%)	Stock	Price	(%)
BBCA	7,400	-2.63	ASII	56,150	-0.99
KRAS	1,140	-2.56	GGRM	40,600	-0.87
BTPN	2,975	-2.46	TLKM	7,700	-0.65
BBRI	6,450	-1.53	ISAT	5,350	-2.88
INCO	4,975	-1.49	DSSA	27,000	-4.25
ADRO	2,200	-1.12	PLIN	2,900	-16.00
CPIN	1,930	-1.03	SMMA	2,800	-19.15
INDF	5,550	-0.89	MEGA	3,800	-10.95
INTP	17,000	-0.58	BBRI	6,450	-1.53
UNTR	23,250	-0.43	INCO	4,975	-1.49

Regional Indices +/- (%) YTD (%)

MXWO	MSCI World	1,388.6	3.7	0.27	8.48
SPX	S&P 500	1,363.6	3.1	0.23	8.43
US					
Dow Jones Industrial		12,810.5	47.2	0.37	10.65
Nasdaq	US	2,873.5	1.0	0.04	8.32
Europe					
EURO 50	Europe	283.8	0.7	0.26	2.89
FTSE	London	6,069.9	0.0	0.00	2.88
DAX	Germany	7,514.5	39.2	0.52	8.68
CAC	France	4,106.9	2.0	0.05	7.94
SMI	Swiss	6,539.7	23.5	0.36	1.61
BRIC					
BOVESPA	Brazil	66,132.9	459.6	0.70	-4.58
MICEX	Russia	1,741.8	-7.8	-0.45	3.19
SENSEX	India	19,136.0	-156.1	-0.81	-6.70
NIFTY	India	5,749.5	-35.9	-0.62	-6.28
SHCOMP	China	2,911.5	24.5	0.85	3.68
SZCOMP	China	1,200.6	16.9	1.43	-6.99

Developed ASIA

Nikkei	Japan	9,849.7	0.0	0.00	-3.71
TPX	Japan	851.9	0.0	0.00	-5.22
HIS	Hong kong	23,720.8	-84.8	-0.36	2.98
KOSPI	S.Korea	2,192.4	-16.0	-0.72	6.89
TAIEX	Taiwan	9,007.9	-32.9	-0.36	0.39
FSSTI	Singapore	3,179.9	-5.1	-0.16	-0.32

ASEAN

SET	Thailand	1,093.6	1.3	0.11	5.89
PCOMP	Philippines	4,319.5	40.7	0.95	2.82
KLCI	Malaysia	1,535.0	-0.3	-0.02	1.06
VNINDEX	Vietnam	480.1	7.1	1.51	-0.94

Currency +/- (%) YTD (%)

EURUSD	Euro	1.481	-0.001	-0.10	10.63
GBPUSD	United Kingdom	1.671	0.008	0.45	7.01
USDCHE	Switzerland	0.865	-0.008	-0.96	-7.47
USDCAD	Canada	0.945	-0.005	-0.58	-5.30
AUDUSD	Australia	1.097	0.004	0.38	7.21
NZDUSD	New Zealand	0.810	0.007	0.92	3.81
USDJPY	Japan	81.2	-0.350	-0.43	0.09
USDCNY	China	6.492	-0.009	-0.14	-1.74
USDHKD	Hongkong	7.766	-0.003	-0.03	-0.09
USDSGD	Singapore	1.224	-0.003	-0.24	-4.60
Rupiah	Indonesia	8,563.0	-18.000	-0.21	-4.81

Value

Value (Rpbn)	Volume (Lot)	Freq (x)
BUMI 625,354	ENRG 819,426	KRAS 6,230
ASII 257,376	BNBR 400,049	ASGR 4,432
BBRI 240,227	DEWA 370,090	BUMI 4,278
BMRI 231,668	BUMI 367,162	BIPI 3,223
PGAS 140,646	BIPI 338,307	KIAS 2,666
TLKM 102,466	KIJA 321,825	BBRI 2,560
KRAS 101,909	TRUB 238,511	BJBR 2,455
BJBR 83,400	ELTY 196,098	ENRG 2,391
LSIP 79,021	KIAS 191,322	ASII 1,966
INCO 74,991	CNKO 179,666	GREN 1,676

Code	Last	Ytd Chg(%)	H-5 Chg (%)	Rekomendasi	STO	RSI	MACD	Bollinger Band		Support			Resistance			H-5	
								Top	Bottom	1	2	3	1	2	3	Highest	Lowest
AALI	23,150	-13.62	0.87	TakeProfit	73.5	60.3	170.4	23,350	22,850	23,050	22,900	22,850	23,250	23,300	23,450	23,250	22,700
ACES	2,650	-7.02	0.95	Trading	56.3	60.5	23.9	2,700	2,600	2,650	2,625	2,600	2,700	2,725	2,750	2,700	2,575
ADRO	2,200	-17.76	-1.12	Spec Buy	12.5	39.6	(29.4)	2,275	2,200	2,200	2,175	2,150	2,250	2,275	2,300	2,275	2,200
AKRA	1,710	0.59	8.23	StrongSell	93.5	75.2	43.0	1,770	1,610	1,700	1,680	1,670	1,730	1,740	1,760	1,720	1,560
ANTM	2,275	-8.08	0.00	Trading	55.6	48.1	7.5	2,325	2,250	2,250	2,225	2,200	2,300	2,325	2,350	2,325	2,250
ASII	56,150	3.22	0.63	StrongSell	80.1	54.7	(27.6)	56,850	54,100	55,850	55,550	55,300	56,400	56,650	56,950	56,300	53,750
BBCA	7,400	14.73	-1.33	Trading	45.0	61.7	185.8	7,650	7,400	7,300	7,200	7,050	7,550	7,700	7,800	7,700	7,350
BBNI	4,050	6.58	-1.22	Trading	40.9	61.2	76.9	4,150	4,000	4,025	4,000	3,975	4,075	4,100	4,125	4,175	4,025
BBRI	6,450	24.64	-0.77	Trading	63.2	68.2	276.3	6,600	6,450	6,300	6,150	6,000	6,600	6,750	6,900	6,650	6,300
BBTN	1,710	2.40	-3.93	StrongBuy	9.1	56.5	42.9	1,790	1,680	1,700	1,680	1,660	1,740	1,760	1,780	1,790	1,700
BDMN	6,200	12.73	-3.13	Accumulate	35.3	38.6	(59.5)	6,350	6,150	6,150	6,100	6,050	6,250	6,300	6,350	6,400	6,100
BISI	1,670	-10.70	-7.22	OverSold	24.1	48.7	36.4	1,770	1,620	1,660	1,650	1,630	1,690	1,710	1,720	1,820	1,640
BMRI	7,150	10.85	0.70	TakeProfit	72.7	65.4	189.0	7,250	7,000	7,050	6,950	6,900	7,200	7,250	7,350	7,250	6,900
BSDE	920	4.55	0.00	TakeProfit	61.5	71.5	34.5	940	910	900	880	870	930	940	960	960	870
BTEL	385	63.83	0.00	StrongSell	85.7	71.4	13.2	385	385	379	372	369	389	392	399	385	375
BUMI	3,425	9.60	2.24	TakeProfit	64.7	64.6	55.3	3,450	3,300	3,400	3,350	3,325	3,475	3,500	3,550	3,450	3,275
CTRA	390	11.43	0.00	OverBought	73.3	58.6	9.3	403	376	385	380	375	395	400	405	400	375
ELTY	144	-10.56	3.60	TakeProfit	63.6	62.2	0.7	148	140	143	141	140	146	147	149	148	137
EXCL	6,800	29.52	8.80	TakeProfit	75.5	76.1	257.7	7,150	6,300	6,650	6,500	6,350	6,950	7,100	7,250	7,100	6,100
GGRM	40,600	-1.10	-1.46	StrongBuy	19.2	51.9	40.9	40,900	40,050	40,250	39,900	39,700	40,800	41,000	41,350	41,450	40,100
HEXA	5,650	-22.07	-1.74	OverSold	38.5	41.0	(140.2)	5,800	5,650	5,650	5,600	5,550	5,750	5,800	5,850	5,800	5,600
INCO	4,975	0.00	2.05	OverBought	77.3	58.1	44.6	5,100	4,925	4,900	4,825	4,725	5,075	5,175	5,250	5,100	4,875
INDF	5,550	12.12	-0.89	Trading	50.0	63.7	122.2	5,700	5,550	5,550	5,550	5,500	5,600	5,650	5,650	5,700	5,500
INDY	4,050	-20.59	1.89	OverBought	71.4	55.1	13.7	4,125	3,975	4,025	4,000	3,975	4,075	4,100	4,125	4,100	3,925
INTP	17,000	5.92	-4.49	StrongBuy	16.1	58.0	433.5	17,600	16,700	16,900	16,800	16,650	17,150	17,300	17,400	17,900	16,900
ISAT	5,350	-1.83	0.00	Trading	40.0	54.4	29.9	5,450	5,150	5,250	5,150	5,100	5,400	5,450	5,550	5,450	5,150
ITMG	46,800	-13.81	-2.09	StrongBuy	12.2	45.0	(28.5)	47,550	46,550	46,550	46,300	45,900	47,200	47,600	47,850	48,300	46,700
JSMR	3,300	-7.04	-2.22	OverSold	20.0	48.4	2.1	3,375	3,275	3,275	3,225	3,200	3,350	3,375	3,425	3,400	3,250
KLBF	3,575	7.52	0.00	OverSold	27.8	58.9	97.5	3,675	3,525	3,575	3,550	3,550	3,600	3,600	3,625	3,675	3,525
LSIP	2,450	-3.54	1.03	TakeProfit	60.0	61.7	30.0	2,475	2,350	2,400	2,350	2,300	2,500	2,550	2,600	2,475	2,350
MYOR	11,000	1.85	-4.35	Trading	41.5	47.1	267.6	11,900	10,850	10,850	10,700	10,450	11,250	11,500	11,650	11,750	10,900
PGAS	4,000	-10.61	1.91	OverBought	76.5	59.1	48.8	4,050	3,950	3,975	3,950	3,925	4,025	4,050	4,075	4,025	3,875
PTBA	22,300	-6.89	0.45	OverBought	68.8	60.0	300.4	22,550	22,150	22,200	22,050	21,850	22,550	22,750	22,900	22,600	22,000
RALS	730	-15.12	-5.19	StrongBuy	16.7	38.4	(9.0)	780	710	725	720	705	745	760	765	790	730
SGRO	3,375	3.85	3.85	TakeProfit	76.9	68.8	78.6	3,400	3,200	3,300	3,225	3,175	3,425	3,475	3,550	3,375	3,200
SMCB	2,250	1.12	2.27	StrongSell	83.3	65.8	73.5	2,325	2,225	2,225	2,200	2,175	2,275	2,300	2,325	2,300	2,150
SMGR	9,500	-3.55	-0.52	Trading	40.0	56.7	117.3	9,600	9,450	9,450	9,350	9,300	9,600	9,650	9,750	9,650	9,400
SMRA	1,260	16.67	5.00	StrongSell	96.6	69.8	41.0	1,310	1,160	1,240	1,220	1,210	1,270	1,280	1,300	1,260	1,150
TINS	2,875	0.88	0.88	StrongSell	100.0	60.5	45.9	2,925	2,825	2,850	2,825	2,800	2,900	2,925	2,950	2,875	2,800
TLKM	7,700	-3.75	-0.65	TakeProfit	68.0	60.3	126.4	7,850	7,450	7,600	7,500	7,450	7,750	7,800	7,900	7,850	7,400
UNTR	23,250	-4.32	0.65	StrongSell	80.0	59.3	184.3	23,550	23,000	23,150	23,050	22,900	23,400	23,550	23,650	23,500	22,750
UNVR	15,300	-4.67	-0.33	OverBought	63.2	49.8	(111.6)	15,400	15,250	15,250	15,200	15,150	15,350	15,400	15,450	15,400	15,100

S1 = Support 1 S2 = Support 2 S3 = Support 3
 R1 = Resisten 1 R2 = Resisten 2 R2 = Resisten 2
 STO = Stochastic Oscillator
 RSI = Relative Strength Index
 MACD = Moving Average Convergence Divergence
 H-5 = 5 hari sebelumnya

RESEARCH TEAM

Andrian Tanuwijaya	Equity Analyst	(andrian.tanuwijaya@trimegah.com)
Hanel Topada Era Tania	Equity Analyst	(hanel.tania@trimegah.com)
T Heldy Arifien	Technical Analyst	(heldy@trimegah.com)
Rovandi	Research Assistant	(rovandi@trimegah.com)

EQUITY CAPITAL MARKET TEAM

Henry F. Jusuf	Head of Equities	(henry@trimegah.com)
Nathanael Benny Prasetyo	Head of Retail ECM	(benny.prasetyo@trimegah.com)
Windra Djulnaily	Pluit, Jakarta	(windra.djulnaily@trimegah.com)
Ariawan Anwar	Artha Graha, Jakarta	(ariawan.anwar@trimegah.com)
Ferry Zabur	Kelapa Gading, Jakarta	(ferry.zabur@trimegah.com)
Wirjawan Joesoef	Mangga Dua, Jakarta	(iwan@trimegah.com)
Lukman Abdul Azis	Kebon Jeruk, Jakarta	(lukman@trimegah.com)
Tutik Suciati	Semarang, Jawa Tengah	(tuty.s@trimegah.com)
Sonny Muljadi	Surabaya, Jawa Timur	(sonny.muljadi@trimegah.com)
Ni Luh Ketut Sri Agustini	Denpasar, Bali	(sri.agustini@trimegah.com)
Philip Fernando Suwandi	Makassar, Sulawesi Selatan	(philip.fs@trimegah.com)
agus.jatmiko	Balikpapan, Kalimantan Timur	(agus.jatmiko@trimegah.com)
Asep Saepudin	Bandung, Jawa Barat	(asep.saepudin@trimegah.com)
Asep Saepudin	Cirebon, Jawa Barat	(asep.saepudin@trimegah.com)
Very Wijaya	Medan, Sumatera Utara	(very.wijaya@trimegah.com)
Tantie Rivi Watie	Pekanbaru, Riau	(tantierw@trimegah.com)
Edwin Jayandaru	Solo, Jawa Tengah	(edwin.jayandaru@trimegah.com)
Edwin Jayandaru	Yogyakarta, Jawa Tengah	(edwin.jayandaru@trimegah.com)
Donny Kristanto Setiadi	Palembang, Sumatra Selatan	(donny.kristanto@trimegah.com)

PT Trimegah Securities Tbk
18th Fl, Artha Graha Building
Jl. Jend. Sudirman Kav. 52-53
Jakarta 12190, INDONESIA
Tel : (6221) 2924 9088 Fax : (6221) 2924 9163

DISCLAIMER

This report has been prepared by PT Trimegah Securities Tbk on behalf of itself and its affiliated companies and is provided for information purposes only. Under no circumstances is it to be used or considered as an offer to sell, or a solicitation of any offer to buy. This report has been produced independently and the forecasts, opinions and expectations contained herein are entirely those of Trimegah Securities.

While all reasonable care has been taken to ensure that information contained herein is not untrue or misleading at the time of publication, Trimegah Securities makes no representation as to its accuracy or completeness and it should not be relied upon as such. This report is provided solely for the information of clients of Trimegah Securities who are expected to make their own investment decisions without reliance on this report. Neither Trimegah Securities nor any officer or employee of Trimegah Securities accept any liability whatsoever for any direct or consequential loss arising from any use of this report or its contents. Trimegah Securities and/or persons connected with it may have acted upon or used the information herein contained, or the research or analysis on which it is based, before publication. Trimegah Securities may in future participate in an offering of the company's equity securities.