

IHSG 3.316,1 -110,2 -3,22%

Ulisan Pasar



Dominasi faktor eksternal menahan laju penguatan IHSG yang di awal sesi perdagangan mencoba bergerak di atas support 3.420, yang kemudian tekanan jual mengakibatkan tingginya fluktuasi harga yang bergerak hingga mencapai 6% membuat level harga terendah baru di tahun perdagangan 2011 serta memangkas IHSG hingga -3,22% dan di tutup pada level 3.316 seiring kekhawatiran perkembangan krisis global yang masih mewarnai atmosfer perdagangan di bursa-bursa dunia pada umumnya.

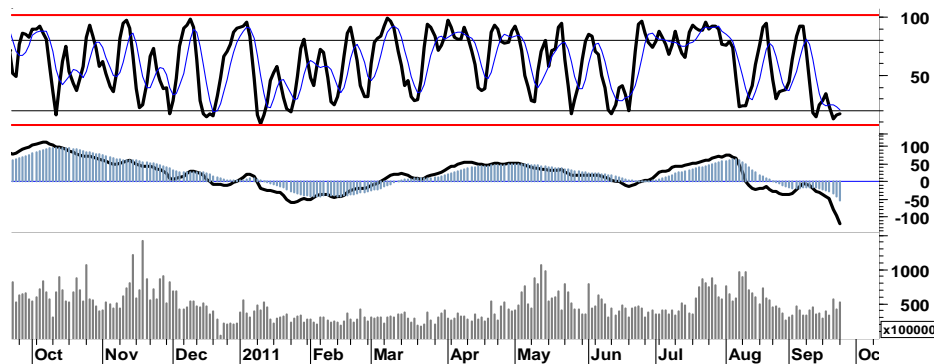
Pergeseran dana dari para pelaku asing masih terlihat mewarnai pergerakan IHSG pada perdagangan kemarin, dengan ditandai tercatatnya nilai penjualan bersih sebesar Rp114,93miliar yang dilakukan oleh para investor asing.

Indeks harga bursa-bursa utama Eropa dan Amerika yang pada perdagangan kemarin membukukan nilai positif, dengan penguatan

DAX +149, DJI +272, Nasdaq +33, dan SP500 +27, diharapkan mampu menjadi faktor positif yang mampu memberikan angin segar pada perdagangan IHSG hari ini untuk dapat bertahan pada basis support akhir 3.310.

Apabila di awal perdagangan IHSG mampu untuk menjadikan 3.310 sebagai titik pembalikan arah, maka swing dalam interval harga 3.300 - 3.480 merupakan momentum untuk melakukan strategi TRADING.

Waspada berlanjutnya tekanan menguji support harga 3.310/3.290, apabila IHSG gagal kembali di area 3.400 atau melakukan penetrasi resistensi harga 3.385/3.420.



S1	S2	R1	R2
3,215	3,110	3,425	3,535

Saham Pilihan

Saham	Harga (Rp)	Rekomendasi	Stochastic	RSI	BB Top	BB Bottom	S1	S2	R1	R2
ASII	57,000	Accumulate	21.35	28.59	66,000	52,400	55,100	53,200	60,800	62,700
BBNI	3,425	Accumulate	30.17	34.18	4,025	3,000	3,125	2,825	3,775	4,075
BBRI	5,350	Accumulate	25.00	32.35	6,350	4,850	5,150	4,900	5,900	6,150
BMRI	5,500	Accumulate	21.69	29.19	6,450	4,850	5,300	5,100	6,000	6,200
SMGR	7,850	Accumulate	37.84	32.42	8,550	7,500	7,550	7,250	8,450	8,750
UNTR	19,700	StrongBuy	16.67	25.11	23,100	17,600	19,050	18,350	20,850	21,550

ASII

57,000

Accumulate



56.000 merupakan support harga yang menentukan bagi pembalikan arah ASII.

Beberapa indikator penunjang pada ASII, baik itu leading ataupun lagging indicator menunjukkan bahwa tekanan jual pada saham tersebut mulai mereda.

Diharapkan mampu memberikan kekuatan pada ASII untuk kembali mencoba menuju target celah harga yang terbuka pada kisaran 61.500 - 63.400.

S1	S2	R1	R2
55,100	53,200	60,800	62,700

BBNI

3,425

Accumulate



Sekalipun belum terlihat signal yang cukup kuat untuk menetapkan pembalikan arah BBNI. Setidaknya peningkatan volume perdagangan selama 5 hari berturut-turut, perlawanan kekuatan beli yang tercermin pada candle, mengindikasikan bahwa kekuatan jual telah mulai mereda.

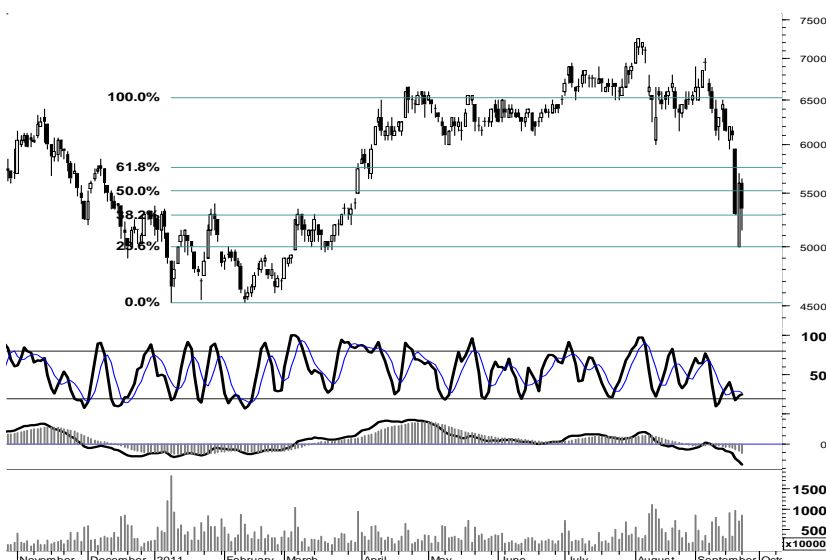
Dan support pada level 3.050 cukup kuat untuk menahan laju tekanan, dan memberikan peluang swing pada area 3.100 - 3.475.

S1	S2	R1	R2
3,125	2,825	3,775	4,075

BBRI

5,350

Accumulate



Signal positif pada lagging indicator, membuka peluang bagi BBRI untuk bertahan dengan basis support 5.300 dan menguji kembali penetrasi resistensi 5.500.

S1	S2	R1	R2
5,150	4,900	5,900	6,150

BMRI

5,500

Accumulate



Ditutup pada pivot support 5.500, menempatkan BMRI berada pada kondisi berimbang.

Namun signal positif pada leading indicator, diharapkan memberikan peluang bagi BMRI untuk bergerak menuju celah harga 6.000 - 6.150.

S1	S2	R1	R2
5,300	5,100	6,000	6,200

SMGR

7,850

Accumulate



Signal golden cross yang tercermin pada stochastic oscillator, diharapkan mampu mendorong SMGR untuk menutup celah harga 8.400 dan melaju menguji resistensi 8.450.

S1	S2	R1	R2
7,550	7,250	8,450	8,750

UNTR

19,700

StrongBuy



Signal positif pada leading indicator, merupakan peluang akumulasi dan titik balik berbasis support harga 18.800/19.000 untuk selanjutnya menguji resistensi pada level 21.450.

S1	S2	R1	R2
18,800	17,850	21,450	22,400

TRADE DATA

JCI (IHSG) 3,316.1 -110.2 -3.22%

YTD (Rp)	-10.5%	Volume (m) :	5,066
YTD (USD)	-11.3%	Nilai (Rpbn) :	3,328
Moving Avg 20day	3,784	Mkt Cap (Rpbn) :	3,439
Moving Avg 50day	3,919	Market P/E (x) :	16.2
Moving Avg 200day	3,730	Market Div. Yield (%) :	2.4

Indonesia & Sectors +/- (%) YTD (%)

MSCI Indonesia	4,026.6	-120.4	-2.90	-11.43
JII	451.5	-16.8	-3.59	-15.28
LQ45	574.2	-18.6	-3.13	-13.19
JAKFIN Index	437.2	-10.9	-0.02	-6.32
JAKINFR Index	656.2	-8.9	-0.01	-19.90
JAKMINE Index	2,391.2	-138.3	-0.05	-26.97
JAKCONS Index	1,113.2	-20.9	-0.02	1.70
JAKTRAD Index	464.7	-12.1	-0.03	-1.99
JAKMIND Index	1,032.0	-36.8	-0.03	6.72
JAKBIND Index	330.3	-17.6	-0.05	-14.71
JAKPROP Index	193.0	-11.1	-0.05	-4.96
JAKAGRI Index	1,909.4	-132.1	-0.06	-16.41

Commodities +/- (%) YTD (%)

CRB Index	303.15	1.3	0.42	-8.91
Oil & Gas				
Crude Oil	80.24	0.4	0.49	-12.19
Natural Gas	3.78	0.1	2.19	-14.14
COAL (Rotterdam)	120.35	-0.7	-0.58	-8.41
COAL (Amsterdam)	120.24	-1.1	-0.90	-4.53
COAL (Australia,wk)	122.50	-0.0	-0.04	0.08
Industrial Metals				
Aluminium	2,179.25	-3.5	-0.16	-11.39
Nickel	18,000	-270	-1.48	-27.27
Tin	20,325	125	0.62	-24.44
Precious Metal				
Gold	1,592.70	-45.0	-2.75	12.05
Silver	29.98	-0.1	-0.42	-3.02
Soft Commodities				
CPO (Malaysia)	2,935.00	-70.0	-2.33	-23.05
CPO (Netherlands)	992.50	-32.5	-3.17	-22.76
Rubber	3,898.64	-461.1	-10.58	-21.93
Corn	648.00	9.5	1.49	3.02
Wheat	648.25	7.5	1.17	-18.38
Soybeans	1,259.75	1.8	0.14	-9.61
Rice (Indonesia)	7,700.00	0.0	0.00	8.45

Winners

Stock	Price	(%)	Stock	Price	(%)
ARTI	325	18.18	AALI	18,800	-9.40
BEKS	134	13.56	BUMI	2,000	-8.05
IKP	720	10.77	CPIN	2,025	-7.95
TCID	8,600	8.86	ADRO	1,520	-7.88
BFIN	6,000	8.11	BDMN	4,450	-6.81
EPMT	770	4.05	PTBA	14,750	-6.35
BNII	405	2.53	BBRI	5,350	-4.46
KLBF	2,950	1.72	ASII	57,000	-3.14
EXCL	4,625	1.09	BBCA	7,350	-2.00
BNLI	1,510	0.67	BMRI	5,500	-1.79

Losers

Stock	Price	(%)	Stock	Price	(%)
AALI	18,800	-9.40	CPIN	2,025	-7.95
BUMI	2,000	-8.05	ADRO	1,520	-7.88
CPIN	2,025	-7.95	BDMN	4,450	-6.81
ADRO	1,520	-7.88	PTBA	14,750	-6.35
BDMN	4,450	-6.81	BBRI	5,350	-4.46
PTBA	14,750	-6.35	ASII	57,000	-3.14
BBRI	5,350	-4.46	BBCA	7,350	-2.00
ASII	57,000	-3.14	BMRI	5,500	-1.79
BBCA	7,350	-2.00			
BMRI	5,500	-1.79			

Regional Indices +/- (%) YTD (%)

MXWO	MSCI World	1,109.4	14.5	1.33	-13.33
SPX	S&P 500	1,163.0	26.5	2.33	-7.53
US					
Dow Jones Industrial		11,043.9	272.4	2.53	-4.61
Nasdaq	US	2,516.7	33.5	1.35	-5.13
Europe					
EURO 50	Europe	220.3	4.1	1.89	-20.13
FTSE	London	5,089.4	22.6	0.45	-13.74
DAX	Germany	5,345.6	149.0	2.87	-22.69
CAC	France	2,859.3	49.2	1.75	-24.85
SMI	Swiss	5,401.0	102.2	1.93	-16.08
BRIC					
BOVESPA	Brazil	53,747.5	517.2	0.97	-22.45
MICEX	Russia	1,346.9	19.7	1.48	-20.21
SENSEX	India	16,051.1	-111.0	-0.69	-21.74
NIFTY	India	4,835.4	-32.4	-0.66	-21.18
SHCOMP	China	2,393.2	-40.0	-1.64	-14.78
SZCOMP	China	1,043.5	-17.2	-1.62	-19.16

Developed ASIA

Nikkei	Japan	8,374.1	-186.1	-2.17	-18.13
TPX	Japan	728.9	-15.7	-2.11	-18.91
HIS	Hong kong	17,407.8	-261.0	-1.48	-24.43
KOSPI	S.Korea	1,652.7	-44.7	-2.64	-19.42
TAIEX	Taiwan	6,877.1	-169.1	-2.40	-23.35
FSSTI	Singapore	2,654.3	-44.5	-1.65	-16.79

ASEAN

SET	Thailand	904.1	-54.1	-5.65	-12.46
PCOMP	Philippines	3,721.2	-164.7	-4.24	-11.42
KLCI	Malaysia	1,331.8	-34.1	-2.50	-12.32
VNINDEX	Vietnam	434.4	-5.9	-1.33	-10.36

Currency +/- (%) YTD (%)

EURUSD	Euro	1.353	0.003	0.24	1.11
GBPUSD	United Kingdom	1.557	0.012	0.75	-0.30
USDCHF	Switzerland	0.902	-0.004	-0.45	-3.60
USDCAD	Canada	1.025	-0.003	-0.29	2.72
AUDUSD	Australia	0.983	0.005	0.55	-3.91
NZDUSD	New Zealand	0.780	0.004	0.46	0.00
USDJPY	Japan	76.4	-0.250	-0.33	-5.87
USDCNY	China	6.402	0.013	0.21	-3.11
USDHKD	Hongkong	7.798	-0.005	-0.06	0.32
USDSGD	Singapore	1.294	-0.004	-0.32	0.80
Rupiah	Indonesia	9,130.0	189.000	2.11	1.49

Value

Value (Rpbn)	Volume (Lot)	Freq (x)
BMRI 490,520	BNBR 1,284,130	BUMI 7,399
BUMI 468,994	ENRG 994,100	ADRO 6,438
BBRI 460,041	ELTY 833,559	BBRI 5,660
TLKM 386,775	KIJA 577,852	BMRI 4,935
ASII 332,228	BUMI 476,265	PGAS 4,705
ADRO 293,889	ADRO 389,819	CPIN 4,653
BBNI 243,813	BKSL 340,033	ELTY 4,410
PGAS 153,204	DEWA 300,214	ELSA 4,227
BBCA 129,399	ASRI 284,170	ASII 3,941
CPIN 114,952	BORN 211,891	LPCK 3,581

Code	Last	Ytd Chg(%)	H-5 Chg (%)	Rekomendasi	STO	RSI	MACD	Bollinger Band		Support			Resistance			H-5	
								Top	Bottom	1	2	3	1	2	3	Highest	Lowest
AALI	18,800	-29.85	-14.55	Accumulate	29.1	23.3	(418.7)	22,600	18,150	17,700	16,600	15,050	20,350	21,900	23,000	22,200	18,100
ACES	3,100	8.77	-5.34	Accumulate	28.6	37.5	(17.7)	3,325	3,100	3,075	3,050	2,975	3,175	3,250	3,275	3,325	3,100
ADRO	1,520	-43.18	-21.65	StrongBuy	15.6	17.7	(162.8)	1,980	1,370	1,430	1,330	1,230	1,630	1,730	1,830	1,970	1,430
AISA	680	-12.82	-5.56	Accumulate	36.7	36.1	(13.2)	740	650	650	620	600	700	720	750	750	640
ANTM	1,430	-42.22	-20.11	StrongBuy	18.6	17.5	(90.7)	1,860	1,310	1,360	1,290	1,180	1,540	1,650	1,720	1,820	1,400
ASII	57,000	4.78	-12.31	Accumulate	21.4	28.6	(2,302.2)	66,000	52,400	55,100	53,200	51,300	58,900	60,800	62,700	66,400	55,000
BBCA	7,350	13.95	-6.37	Accumulate	32.3	39.3	(162.0)	8,050	6,850	7,150	6,950	6,750	7,550	7,750	7,950	8,000	6,950
BBNI	3,425	-9.87	-12.18	Accumulate	30.2	34.2	(149.6)	4,025	3,000	3,125	2,825	2,650	3,600	3,775	4,075	4,075	2,975
BBRI	5,350	3.38	-13.01	Accumulate	25.0	32.3	(259.9)	6,350	4,850	5,150	4,900	4,650	5,650	5,900	6,150	6,400	5,000
BDMN	4,450	-19.09	-8.72	Accumulate	32.3	34.7	(140.2)	5,000	4,325	4,300	4,125	3,925	4,675	4,875	5,050	4,950	4,325
BISI	1,000	-46.52	-12.28	Accumulate	27.3	25.5	(71.8)	1,165	885	945	890	855	1,035	1,070	1,125	1,180	900
BMRI	5,500	-14.73	-13.39	Accumulate	21.7	29.2	(415.0)	6,450	4,850	5,300	5,100	4,850	5,750	6,000	6,200	6,600	5,100
BSDE	740	-15.91	-20.43	StrongBuy	8.0	24.3	(44.8)	920	690	715	690	645	785	830	855	950	730
BTEL	330	40.43	-7.04	Trading	52.0	37.3	(3.5)	352	320	307	284	272	342	354	377	355	295
BUMI	2,000	-36.00	-24.53	StrongBuy	15.8	22.1	(135.3)	2,710	1,730	1,830	1,660	1,490	2,180	2,350	2,520	2,725	1,830
BWPT	1,020	-22.14	-12.82	OverSold	25.0	19.8	(24.4)	1,210	980	970	920	860	1,080	1,140	1,190	1,190	980
ELTY	108	-32.92	-17.56	Accumulate	23.3	22.7	(7.7)	140	101	99	90	79	119	130	139	136	101
EXCL	4,625	-11.90	-8.42	Trading	52.6	34.5	(184.0)	5,125	4,275	4,500	4,375	4,250	4,750	4,875	5,000	5,250	3,675
GGRM	49,000	19.37	-11.71	Accumulate	23.7	32.0	(577.5)	54,600	46,300	47,900	46,800	45,750	50,050	51,100	52,200	56,500	47,400
HEXA	6,550	-9.66	-18.13	Accumulate	26.7	28.2	(134.0)	8,400	6,100	5,850	5,150	4,350	7,350	8,150	8,850	8,350	5,900
HRUM	6,900	-26.98	-14.81	Accumulate	30.6	31.7	(430.1)	8,250	6,150	6,550	6,200	5,950	7,150	7,400	7,750	8,200	6,300
INCO	2,900	-41.71	-20.55	StrongBuy	8.4	24.1	(198.3)	3,700	2,525	2,800	2,700	2,550	3,050	3,200	3,300	3,725	2,850
INDF	4,500	-9.09	-16.67	StrongBuy	19.8	27.5	(386.4)	5,300	3,950	4,350	4,175	4,050	4,650	4,775	4,950	5,650	4,150
INDY	2,300	-54.90	-20.69	Accumulate	23.1	20.2	(214.4)	2,975	2,075	2,100	1,900	1,725	2,475	2,650	2,850	2,950	2,075
INTP	11,950	-25.55	-10.49	Accumulate	34.6	32.2	(760.5)	13,800	10,650	11,550	11,150	10,600	12,500	13,050	13,450	14,050	10,700
ISAT	5,500	0.92	-4.35	OverBought	64.2	48.9	17.6	5,700	5,350	5,350	5,200	5,050	5,650	5,800	5,950	5,800	4,800
ITMG	38,800	-28.55	-12.81	Accumulate	23.3	34.3	(1,312.4)	45,500	35,300	37,650	36,500	35,000	40,300	41,800	42,950	45,000	37,500
JSMR	3,500	-1.41	-10.83	Accumulate	20.6	29.7	(62.5)	4,025	3,250	3,375	3,250	3,075	3,675	3,850	3,975	4,000	3,400
KLBF	2,950	-11.28	-15.11	Accumulate	21.2	32.3	(93.8)	3,550	2,500	2,800	2,625	2,550	3,050	3,125	3,300	3,600	2,650
LSIP	1,760	-30.71	-20.00	StrongBuy	12.6	16.5	(101.6)	2,220	1,620	1,640	1,520	1,330	1,960	2,150	2,270	2,225	1,710
MAPI	4,050	45.95	-22.12	StrongBuy	15.7	39.6	0.9	5,075	3,500	3,975	3,875	3,725	4,225	4,375	4,475	5,300	3,800
PGAS	2,350	-47.49	-8.74	Accumulate	37.0	25.3	(269.0)	2,650	2,100	2,250	2,150	2,075	2,425	2,500	2,600	2,675	2,025
PTBA	14,750	-38.41	-16.19	OverSold	24.0	18.3	(1,028.1)	17,600	13,750	13,750	12,700	11,700	15,800	16,800	17,850	17,900	13,700
RALS	710	-17.44	-8.97	Trading Sell	25.9	27.0	(14.9)	790	675	20,870	20,870	20,870	20,870	20,870	20,870	790	680
SGRO	2,650	-18.46	-21.48	StrongBuy	9.1	17.8	(147.3)	3,450	2,375	2,525	2,400	2,225	2,825	3,000	3,125	3,400	2,550
SMCB	1,680	-24.49	-12.95	StrongBuy	10.8	25.2	(62.3)	1,940	1,590	1,640	1,590	1,530	1,750	1,810	1,860	1,990	1,650
SMGR	7,850	-20.30	-7.65	Accumulate	37.8	32.4	(320.5)	8,550	7,500	7,550	7,250	6,950	8,150	8,450	8,750	8,700	7,400
SMRA	970	-10.19	-25.95	StrongBuy	12.4	24.8	(29.8)	1,270	875	895	820	715	1,075	1,180	1,255	1,310	920
TINS	1,700	-40.35	-18.07	StrongBuy	13.4	22.2	(108.8)	2,170	1,560	1,620	1,540	1,420	1,820	1,940	2,020	2,150	1,650
TLKM	7,200	-10.00	-3.36	OverSold	26.7	46.6	(25.9)	7,700	6,750	7,050	6,900	6,700	7,400	7,600	7,750	7,650	6,900
UNTR	19,700	-18.93	-14.72	StrongBuy	16.7	25.1	(1,028.8)	23,100	17,600	19,050	18,350	17,800	20,300	20,850	21,550	23,250	18,700
UNVR	15,200	-5.30	-5.30	Accumulate	39.5	38.5	(167.1)	16,150	14,600	14,700	14,200	13,750	15,650	16,100	16,600	16,600	14,000

S1 = Support 1 S2 = Support 2 S3 = Support 3
 R1 = Resisten 1 R2 = Resisten 2 R2 = Resisten 2
 STO = Stochastic Oscillator
 RSI = Relative Strength Index
 MACD = Moving Average Convergence Divergence
 H-5 = 5 hari sebelumnya

RESEARCH TEAM

Andrian Tanuwijaya	Equity Analyst	(andrian.tanuwijaya@trimegah.com)
Hanel Topada Era Tania	Equity Analyst	(hanel.tania@trimegah.com)
Paul Raymond Widjaja	Equity Analyst	(paul.widjaja@trimegah.com)
Michele Gabriela	Equity Analyst	(michele.gabriela@trimegah.com)
T Hedy Arifien	Technical Analyst	(hedy@trimegah.com)
Rovandi	Research Assistant	(rovandi@trimegah.com)

EQUITY CAPITAL MARKET TEAM

Nathanael Benny Prasetyo	Head of Retail ECM	(benny.prasetyo@trimegah.com)
Windra Djulnaily	Pluit, Jakarta	(windra.djulnaily@trimegah.com)
Ariawan Anwar	Artha Graha, Jakarta	(ariawan.anwar@trimegah.com)
Ferry Zabur	Kelapa Gading, Jakarta	(ferry.zabur@trimegah.com)
Wirjawan Joesoef	Mangga Dua, Jakarta	(iwan@trimegah.com)
Lukman Abdul Azis	Kebon Jeruk, Jakarta	(lukman@trimegah.com)
Untung Wijaya	Semarang, Jawa Tengah	(untung.wijaya@trimegah.com)
Sonny Muljadi	Surabaya, Jawa Timur	(sonny.muljadi@trimegah.com)
Ni luh Ketut Sri Agustini	Denpasar, Bali	(sri.agustini@trimegah.com)
Philip Fernando Suwandi	Makassar, Sulawesi Selatan	(philip.fs@trimegah.com)
agus.jatmiko	Balikpapan, Kalimantan Timur	(agus.jatmiko@trimegah.com)
Asep Saepudin	Bandung, Jawa Barat	(asep.saepudin@trimegah.com)
Ariffianto	Cirebon, Jawa Barat	(ariffianto@trimegah.com)
Very Wijaya	Medan, Sumatera Utara	(very.wijaya@trimegah.com)
Tantie Rivi Watie	Pekanbaru, Riau	(tantierw@trimegah.com)
Agus Bambang Suseno	Solo, Jawa Tengah	(agus.suseno@trimegah.com)
Untung Wijaya	Yogyakarta, Jawa Tengah	(untung.wijaya@trimegah.com)
Donny Kristanto Setiadi	Palembang, Sumatra Selatan	(donny.kristanto@trimegah.com)
Rr. Putri Ayu Erikusuma	Malang, Jawa Timur	(putri.ayu@trimegah.com)

PT Trimegah Securities Tbk
18th Fl, Artha Graha Building
Jl. Jend. Sudirman Kav. 52-53
Jakarta 12190, INDONESIA
Tel : (6221) 2924 9088 Fax : (6221) 2924 9163

DISCLAIMER

This report has been prepared by PT Trimegah Securities Tbk on behalf of itself and its affiliated companies and is provided for information purposes only. Under no circumstances is it to be used or considered as an offer to sell, or a solicitation of any offer to buy. This report has been produced independently and the forecasts, opinions and expectations contained herein are entirely those of Trimegah Securities.

While all reasonable care has been taken to ensure that information contained herein is not untrue or misleading at the time of publication, Trimegah Securities makes no representation as to its accuracy or completeness and it should not be relied upon as such. This report is provided solely for the information of clients of Trimegah Securities who are expected to make their own investment decisions without reliance on this report. Neither Trimegah Securities nor any officer or employee of Trimegah Securities accept any liability whatsoever for any direct or consequential loss arising from any use of this report or its contents. Trimegah Securities and/or persons connected with it may have acted upon or used the information herein contained, or the research or analysis on which it is based, before publication. Trimegah Securities may in future participate in an offering of the company's equity securities.