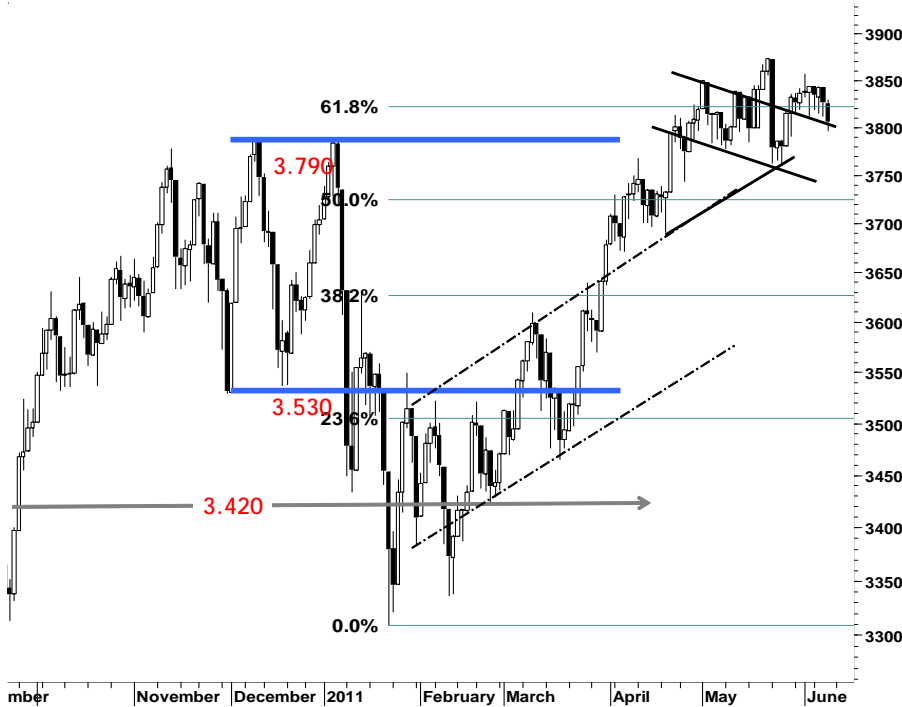


IHSG

3.806,2 -19,6 -0,51%

Ulisan Pasar



Tekanan jual yang berlanjut serta melanda IHSG di perdagangan kemarin, kembali membuat IHSG terpuruk dan mencoba menguji support harga terendah 3.795. Sebelum akhirnya mengakhiri sesi perdagangan dengan pelemahan 0,51% dan ditutup di level 3.806, mengikuti penurunan indeks pada bursa-bursa utama Asia yang juga mencatatkan pelemahan rata-rata 0,5% sebagai imbas sentimen negatif perlambatan pertumbuhan ekonomi dunia.

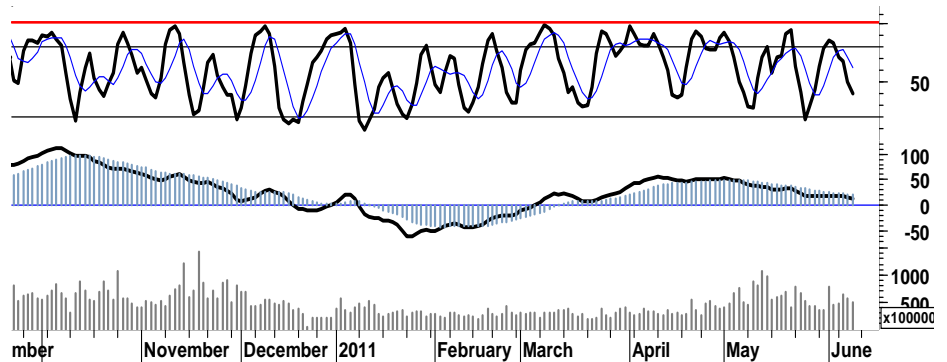
Terkoreksi 20 poin kemarin, IHSG gagal kembali ke dalam zona positif. Sekalipun peredaran perdana saham SIMP berhasil mendorong IHSG membukukan nilai positif 0,1%, mencoba mencapai resistensi harga 3.840 serta mendorong IHSG menggapai zona hijau dengan menyentuh level harga 3.830. Para pelaku asingpun kembali mencatat nilai penjualan bersih sebesar Rp695miliar, penurunan rasio volume perdagangan sebesar 5,5%.

Secara keseluruhan, IHSG pada perdagangan

hari Kamis kemarin bergerak datar pada area konsolidasi 3.795 - 3.840. Untuk dapat keluar dari zona merah, IHSG diharapkan mampu melakukan penetrasi resistensi harga terdekat 3.840.

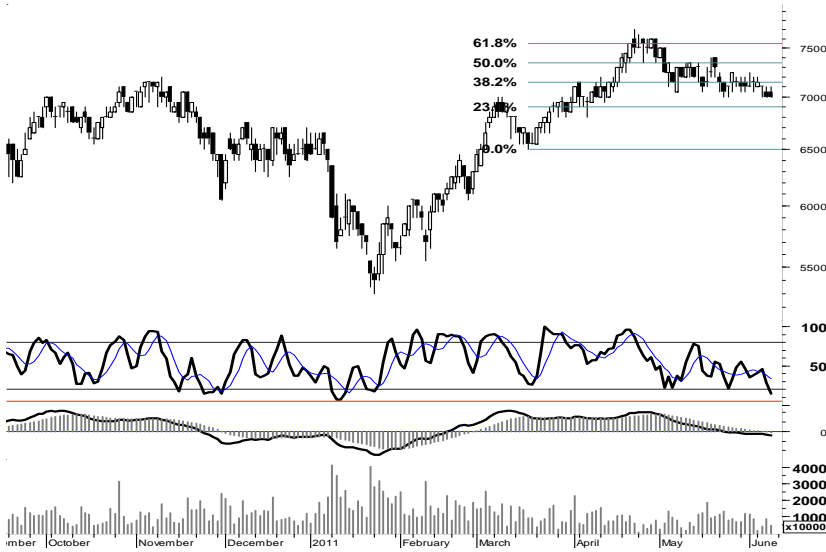
Namun ditengah minimnya sentimen positif serta signal negatif leading indicator, kami perkirakan IHSG pada perdagangan hari ini masih akan mencoba menguji support harga 3.795 serta bergerak dalam rentang harga 3.780 - 3.840.

S1	S2	R1	R2
3,795	3,780	3,825	3,840



Saham Pilihan

Saham	Harga (Rp)	Rekomendasi	Stochastic	RSI	BB Top	BB Bottom	S1	S2	R1	R2
BBCA	7,000	StrongBuy	14.29	42.45	7,200	6,950	7,000	6,950	7,150	7,200
BDMN	6,000	Trading Buy	16.67	44.39	6,250	5,950	6,000	5,950	6,150	6,200
INDF	5,200	Accumulate	21.43	38.06	5,550	5,150	5,150	5,100	5,400	5,450
INDY	4,050	Trading Buy	17.86	42.51	4,200	4,025	4,025	4,000	4,150	4,175
PGAS	3,950	OverSold	35.00	44.12	4,075	3,900	3,925	3,875	4,025	4,075
TLKM	7,450	Trading Buy	16.67	42.47	7,700	7,400	7,400	7,350	7,550	7,600



Dengan terbatas ruang pelemahan, membuka peluang bagi BBCA untuk melakukan pembalikan arah pada support 7.000.

Perketat stop-loss harga 6.900, untuk meminimalisir potensi tekanan menuju support target 6.500.

S1	S2	R1	R2
7,000	6,950	7,150	7,200



Ditutup dalam area pivot support 6.000, menempatkan BDMN pad kondisi berimbang.

Penyempitan ruang tekanan pada stochastic oscillator, membuka peluang akumulasi BDMN pada kisaran support 5.950 - 6.000. Dengan tetap memperketat stop loss harga di level 5.800.

S1	S2	R1	R2
6,000	5,950	6,150	6,200



Berada pada support siklus oversold, akumulasi INDF dapat dilakukan hanya apabila INDF mampu bertahan pada level support psikologis 5.200.

Kami perkirakan INDF akan mencoba bertahan pada area support 5.100 - 5.200.

S1	S2	R1	R2
5,150	5,100	5,400	5,450

INDY

4,050

Trading Buy



Indikasi golden-cross pada fast moving oscillator yang sempat tertunda, mencerminkan bahwa INDY masih akan diwarnai oleh tekanan jual.

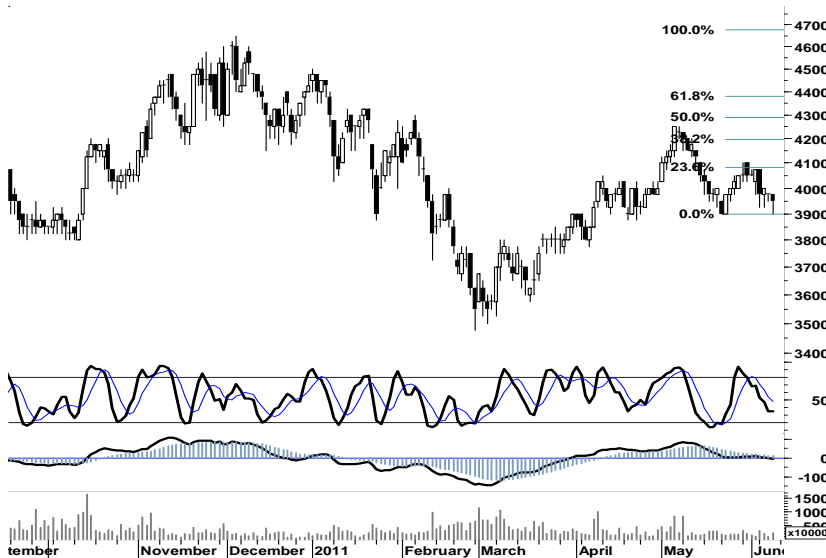
Support harga 3.950 merupakan basis bagi INDY untuk dapat bertahan pada area konsolidasi, selanjutnya mencoba bergerak dalam rentang harga 4.000 - 4.200.

S1	S2	R1	R2
4,025	4,000	4,150	4,175

PGAS

3,950

OverSold



Kekuatan beli yang telah berhasil mengembalikan PGAS pada support siklus 3.900, membuka peluang untuk kembali menguji resistensi harga 4.000.

Dengan memperketat stop-loss harga 3.875, PGAS memiliki peluang untuk bergerak dalam interval harga 3.900 - 4.050.

S1	S2	R1	R2
3,925	3,875	4,025	4,075

TLKM

7,450

Trading Buy



Ditutup pada area pivot support 7.450, menempatkan TLKM pada kondisi berimbang.

Dengan tetap memperhatikan stop-loss harga pada level 7.300, TLKM kami perkirakan akan mencoba bertahan pada area konsolidasinya di area 7.450-7.700.

S1	S2	R1	R2
7,400	7,350	7,550	7,600

TRADE DATA

JCI (IHSG) 3,806.2 -19.6 -0.51%

YTD (Rp)	2.8%	Volume (m) :	4,736
YTD (USD)	8.3%	Nilai (Rpbn) :	4,851
Moving Avg 20day	3,825	Mkt Cap (Rptr) :	3,420
Moving Avg 50day	3,781	Market P/E (x) :	16.3
Moving Avg 200day	3,582	Market Div. Yield (%) :	2.4

Indonesia & Sectors +/- (%) YTD (%)

MSCI Indonesia	4,689.6	-25.9	-0.55	3.15
JII	525.6	-3.0	-0.56	-1.37
LQ45	673.4	-4.4	-0.65	1.82
JAKFIN Index	492.2	-3.3	-0.01	5.47
JAKINFR Index	768.2	-5.0	-0.01	-6.23
JAKMINE Index	3,296.7	-3.1	-0.00	0.69
JAKCONS Index	1,121.2	-8.3	-0.01	2.42
JAKTRAD Index	514.1	-2.6	-0.01	8.45
JAKMIND Index	1,069.3	-10.4	-0.01	10.57
JAKBIND Index	397.6	-1.4	-0.00	2.66
JAKPROP Index	210.2	-0.3	-0.00	3.50
JAKAGRI Index	2,358.6	7.0	0.00	3.25

Commodities +/- (%) YTD (%)

CRB Index	350.84	2.5	0.72	5.42
Oil & Gas				
Crude Oil	101.93	1.2	1.18	11.55
Natural Gas	4.67	-0.2	-3.57	6.11
COAL (Rotterdam)	124.75	-1.5	-1.19	-5.06
COAL (Amsterdam)	125.25	-0.8	-0.60	-0.56
COAL (Australia,wk)	118.65	0.0	0.00	-3.06
Industrial Metals				
Aluminium	2,646.3	-9.5	-0.36	7.60
Nickel	23,200	495	2.18	-6.26
Tin	25,705	10	0.04	-4.44
Precious Metal				
Gold	1,542.70	4.0	0.26	8.53
Silver	37.42	0.8	2.20	21.07
Soft Commodities				
CPO (Malaysia)	3,307.00	-33.0	-0.99	-13.29
CPO (Netherland)	1,135.00	-37.5	-3.20	-11.67
Rubber	5,255.10	-32.2	-0.61	5.23
Corn	785.50	21.5	2.81	24.88
Wheat	745.00	-3.0	-0.40	-6.20
Soybeans	1,393.75	-7.8	-0.55	0.00
Rice (Indonesia)	6,850.00	0.0	0.00	-3.52

Winners

Stock	Price	(%)	Stock	Price	(%)
MASA	560	7.69	SMAR	6,900	-6.12
BAEK	1,690	5.62	INDF	5,200	-1.89
CTRA	445	3.49	BDMN	6,000	-1.64
TBIG	2,275	3.41	BBRI	6,300	-1.56
BUMI	3,450	2.22	BYAN	19,000	-1.55
SMMA	2,700	1.89	ASII	58,800	-1.18
KRAS	1,140	1.79	GGRM	45,200	-0.77
LPKR	650	1.56	BMRI	6,950	-0.71
BORN	1,550	1.31	UNVR	14,700	-0.68
BRMS	790	1.28	TLKM	7,450	-0.67

Losers

Stock	Price	(%)	Stock	Price	(%)
SMAR	6,900	-6.12	INDF	5,200	-1.89
INDF	5,200	-1.89	BDMN	6,000	-1.64
BDMN	6,000	-1.64	BBRI	6,300	-1.56
BBRI	6,300	-1.56	BYAN	19,000	-1.55
BYAN	19,000	-1.55	ASII	58,800	-1.18
ASII	58,800	-1.18	GGRM	45,200	-0.77
GGRM	45,200	-0.77	BMRI	6,950	-0.71
BMRI	6,950	-0.71	UNVR	14,700	-0.68
UNVR	14,700	-0.68	TLKM	7,450	-0.67
TLKM	7,450	-0.67			

Regional Indices

			+/-	(%)	YTD (%)
MXWO	MSCI Word	1,307.9	6.1	0.47	2.18
SPX	S&P 500	1,289.0	9.4	0.74	2.49
US					
Dow Jones Industrial		12,124.4	75.4	0.63	4.72
Nasdaq	US	2,684.9	9.5	0.35	1.21

Europe

EURO 50	Europe	271.8	2.8	1.02	-1.47
FTSE	London	5,856.3	47.4	0.82	-0.74
DAX	Jerman	7,159.7	99.4	1.41	3.55
CAC	France	3,878.7	40.7	1.06	1.94
SMI	Swiss	6,271.0	14.2	0.23	-2.56

BRIC

BOVESPA	Brazil	63,468.8	435.9	0.69	-8.42
MICEX	Russia	1,692.3	27.5	1.65	0.26
SENSEX	India	18,384.9	-9.4	-0.05	-10.36
NIFTY	India	5,521.1	-5.8	-0.10	-10.00
SHCOMP	China	2,703.3	-46.9	-1.71	-3.73
SZCOMP	China	1,113.0	-23.5	-2.07	-13.78

Developed ASIA

Nikkei	Japan	9,467.2	17.7	0.19	-7.45
TPX	Japan	813.0	-1.5	-0.18	-9.55
HIS	Hong kong	22,609.8	-51.8	-0.23	-1.85
KOSPI	S.Korea	2,071.4	-11.9	-0.57	1.00
TAIEX	Taiwan	9,000.9	-6.6	-0.07	0.32
FSSTI	Singapore	3,097.6	-5.4	-0.17	-2.90

ASEAN

SET	Thailand	1,016.9	2.3	0.22	-1.54
PCOMP	Philippines	4,224.3	-31.1	-0.73	0.55
KLCI	Malaysia	1,550.9	-0.9	-0.06	2.11
VNINDEX	Vietnam	444.0	4.4	1.00	-8.40

Currency

			+/-	(%)	YTD (%)
EURUSD	Euro	1.451	-0.007	-0.50	8.41
GBPUSD	United Kingdom	1.637	-0.004	-0.23	4.83
USDCHF	Switzerland	0.841	0.005	0.65	-10.03
USDCAD	Canada	0.973	-0.006	-0.64	-2.51
AUDUSD	Australia	1.063	0.000	0.04	3.85
NZDUSD	New Zealand	0.825	0.010	1.20	5.72
USDJPY	Japan	80.4	0.470	0.59	-0.94
USDCNY	China	6.476	0.000	0.00	-1.98
USDHKD	Hongkong	7.784	0.002	0.02	0.14
USDSGD	Singapore	1.232	-0.002	-0.13	-3.98
Rupiah	Indonesia	8,521.0	6.000	0.07	-5.28

Value

Value	(Rpbn)	Volume	(Lot)	Freq	(x)
BUMI	690,196	SIMP	983,529	PKPK	7,010
SIMP	594,066	DEWA	911,336	SIMP	6,051
BBNI	160,039	ENRG	551,312	BHIT	4,403
TLKM	159,491	BNBR	534,003	KRAS	4,373
BMRI	156,784	ELTY	488,755	BUMI	2,904
ASII	114,654	BUMI	402,550	DEWA	2,792
BBRI	111,142	BHIT	364,372	CLPI	2,196
PTBA	105,791	BLTA	203,176	GDST	1,792
PGAS	93,301	TRUB	177,196	BMRI	1,747
INDF	87,080	PKPK	163,534	MNCN	1,610

Code	Last	Ytd Chg(%)	H-5 Chg (%)	Rekomendasi	STO	RSI	MACD	Bollinger Band		Support			Resistance			H-5	
								Top	Bottom	1	2	3	1	2	3	Highest	Lowest
AALI	23,000	-14.18	-2.75	OverSold	22.0	44.0	21.6	23,950	22,800	22,900	22,800	22,550	23,250	23,500	23,600	23,950	23,000
ACES	3,000	5.26	15.38	StrongSell	89.1	72.6	56.0	3,275	2,525	2,875	2,725	2,650	3,100	3,175	3,325	3,075	2,600
ADRO	2,450	-8.41	1.03	TakeProfit	66.7	61.1	44.4	2,500	2,450	2,425	2,400	2,375	2,475	2,500	2,525	2,500	2,375
AKRA	1,800	5.88	-1.10	OverSold	30.4	66.5	50.6	1,820	1,780	1,790	1,780	1,760	1,820	1,840	1,850	1,850	1,770
ANTM	2,125	-14.14	-1.16	Trading	44.4	35.3	(30.9)	2,175	2,125	2,100	2,075	2,050	2,150	2,175	2,200	2,175	2,075
ASII	58,800	8.09	-0.51	OverBought	65.9	51.5	518.7	59,850	58,650	58,600	58,350	58,100	59,100	59,350	59,600	59,850	58,300
BBCA	7,000	8.53	-1.41	StrongBuy	14.3	42.4	(49.7)	7,200	6,950	7,000	6,950	6,900	7,100	7,150	7,200	7,250	7,000
BBNI	3,750	-1.32	-1.96	Accumulate	26.3	39.4	(42.7)	3,875	3,700	3,725	3,700	3,675	3,775	3,800	3,825	3,900	3,725
BBRI	6,300	21.74	0.80	Trading	46.7	51.0	29.5	6,500	6,250	6,300	6,250	6,200	6,400	6,450	6,500	6,500	6,250
BBTN	1,640	-1.80	-0.61	OverBought	66.7	46.2	(11.6)	1,690	1,620	1,630	1,620	1,600	1,660	1,680	1,690	1,670	1,630
BDMN	6,000	9.09	-2.44	Trading Buy	16.7	44.4	(32.8)	6,250	5,950	6,000	5,950	5,900	6,100	6,150	6,200	6,200	6,000
BISI	1,490	-20.32	-6.29	Trading	7.7	32.0	(32.7)	1,600	1,480	1,470	1,440	1,400	1,540	1,580	1,610	1,610	1,480
BMRI	6,950	7.75	-2.80	OverSold	29.4	45.4	1.3	7,150	6,900	6,900	6,850	6,800	7,000	7,050	7,100	7,250	6,900
BSDE	910	3.41	0.00	Trading	50.0	53.6	2.5	925	890	900	885	880	920	925	940	920	890
BTEL	350	48.94	-4.11	Accumulate	30.8	29.6	(4.7)	373	346	344	337	329	359	367	374	375	345
BUMI	3,450	10.40	2.99	OverBought	71.4	54.0	(2.5)	3,525	3,350	3,375	3,300	3,250	3,500	3,550	3,625	3,475	3,300
CTRA	445	27.14	5.95	StrongSell	93.8	66.8	9.7	455	412	435	425	420	450	455	465	445	410
ELTY	160	-0.62	-3.03	Trading	56.3	51.1	2.9	166	159	159	158	155	163	166	167	168	159
EXCL	5,800	10.48	-0.85	Accumulate	20.7	33.6	(105.9)	6,000	5,750	5,750	5,700	5,600	5,900	6,000	6,050	6,200	5,750
GGRM	45,200	10.11	1.57	TakeProfit	77.0	69.5	915.7	45,950	44,650	44,800	44,400	44,000	45,600	46,000	46,400	45,850	43,300
HEXA	6,300	-13.10	-2.33	Trading Buy	-	49.4	79.3	6,550	6,200	6,300	6,300	6,250	6,350	6,400	6,400	6,700	6,300
INCO	4,650	-6.53	-3.13	Trading Buy	8.3	37.2	(41.0)	4,775	4,600	4,650	4,625	4,600	4,700	4,725	4,750	4,850	4,650
INDF	5,200	5.05	-4.59	Accumulate	21.4	38.1	(47.1)	5,550	5,150	5,150	5,100	5,000	5,300	5,400	5,450	5,500	5,200
INDY	4,050	-20.59	-4.14	Trading Buy	17.9	42.5	8.5	4,200	4,025	4,025	4,000	3,950	4,100	4,150	4,175	4,300	4,025
INTP	16,800	4.67	0.00	Trading	42.3	47.1	52.5	17,700	16,500	16,750	16,650	16,500	17,000	17,150	17,250	17,550	16,650
ISAT	5,150	-5.50	-1.90	Trading	44.4	41.2	(32.3)	5,300	5,150	5,100	5,050	5,000	5,200	5,250	5,300	5,250	5,100
ITMG	47,200	-13.08	0.53	OverBought	77.3	50.4	(36.7)	47,700	46,800	47,050	46,900	46,750	47,350	47,500	47,650	47,500	46,300
JSMR	3,325	-6.34	-5.00	Accumulate	23.8	37.7	(6.5)	3,450	3,300	3,300	3,275	3,225	3,375	3,425	3,450	3,500	3,325
KLBF	3,375	1.50	-2.17	Trading Buy	15.0	44.6	(28.8)	3,475	3,350	3,350	3,325	3,275	3,425	3,475	3,500	3,575	3,350
LSIP	2,375	-6.50	-1.04	OverSold	25.0	46.8	(4.1)	2,450	2,350	2,350	2,325	2,300	2,400	2,425	2,450	2,450	2,325
MYOR	13,000	20.37	0.39	TakeProfit	60.0	71.0	373.8	13,200	12,850	12,950	12,900	12,750	13,150	13,300	13,350	13,200	12,800
PGAS	3,950	-11.73	-2.47	OverSold	35.0	44.1	(6.9)	4,075	3,900	3,925	3,875	3,850	4,000	4,025	4,075	4,075	3,900
PTBA	20,950	-12.53	-2.10	Accumulate	25.0	37.9	(190.9)	21,450	20,800	20,800	20,650	20,500	21,100	21,250	21,400	21,500	20,800
RALS	800	-6.98	-1.23	Trading Sell	44.4	53.8	16.9	850	795	20,870	20,870	20,870	20,870	20,870	20,870	860	800
SGRO	3,450	6.15	0.00	OverSold	30.8	56.1	23.7	3,475	3,425	3,425	3,375	3,350	3,500	3,525	3,575	3,525	3,400
SMCB	2,125	-4.49	-4.49	Trading Buy	18.8	47.2	13.8	2,275	2,100	2,125	2,100	2,075	2,175	2,200	2,225	2,300	2,125
SMGR	9,250	-6.09	-4.15	Trading Buy	17.9	35.2	(25.0)	9,700	9,100	9,200	9,100	9,050	9,350	9,400	9,500	9,700	9,150
SMRA	1,120	3.70	-2.61	Trading	47.8	45.7	(0.0)	1,200	1,110	1,100	1,080	1,050	1,150	1,180	1,200	1,200	1,110
TINS	2,550	-10.53	-2.86	Trading	40.0	33.4	(43.8)	2,625	2,550	2,525	2,500	2,475	2,575	2,600	2,625	2,650	2,525
TLKM	7,450	-6.88	-3.87	Trading Buy	16.7	42.5	(0.9)	7,700	7,400	7,400	7,350	7,300	7,500	7,550	7,600	7,750	7,400
UNTR	23,000	-5.35	0.22	StrongSell	83.7	57.5	214.2	23,350	22,750	22,900	22,800	22,600	23,200	23,400	23,500	23,250	22,500
UNVR	14,700	-8.41	-0.68	Trading	42.9	38.5	(64.9)	15,050	14,650	14,650	14,600	14,450	14,850	15,000	15,050	14,950	14,700

S1 = Support 1 S2 = Support 2 S3 = Support 3
 R1 = Resisten 1 R2 = Resisten 2 R2 = Resisten 2
 STO = Stochastic Oscillator
 RSI = Relative Strength Index
 MACD = Moving Average Convergence Divergence
 H-5 = 5 hari sebelumnya

RESEARCH TEAM

Andrian Tanuwijaya	Equity Analyst	(andrian.tanuwijaya@trimegah.com)
Hanel Topada Era Tania	Equity Analyst	(hanel.tania@trimegah.com)
Paul Raymond Widjaja	Equity Analyst	(paul.widjaja@trimegah.com)
T Hedy Arifien	Technical Analyst	(hedy@trimegah.com)
Rovandi	Research Assistant	(rovandi@trimegah.com)

EQUITY CAPITAL MARKET TEAM

Nathanael Benny Prasetyo	Head of Retail ECM	(benny.prasetyo@trimegah.com)
Windra Djulnaily	Pluit, Jakarta	(windra.djulnaily@trimegah.com)
Ariawan Anwar	Artha Graha, Jakarta	(ariawan.anwar@trimegah.com)
Ferry Zabur	Kelapa Gading, Jakarta	(ferry.zabur@trimegah.com)
Wirjawan Joesoef	Mangga Dua, Jakarta	(iwan@trimegah.com)
Lukman Abdul Azis	Kebon Jeruk, Jakarta	(lukman@trimegah.com)
Tutik Suciati	Semarang, Jawa Tengah	(tuty.s@trimegah.com)
Sonny Muljadi	Surabaya, Jawa Timur	(sonny.muljadi@trimegah.com)
Ni Luh Ketut Sri Agustini	Denpasar, Bali	(sri.agustini@trimegah.com)
Philip Fernando Suwandi	Makassar, Sulawesi Selatan	(philip.fs@trimegah.com)
agus.jatmiko	Balikpapan, Kalimantan Timur	(agus.jatmiko@trimegah.com)
Asep Saepudin	Bandung, Jawa Barat	(asep.saepudin@trimegah.com)
Asep Saepudin	Cirebon, Jawa Barat	(asep.saepudin@trimegah.com)
Very Wijaya	Medan, Sumatera Utara	(very.wijaya@trimegah.com)
Tantie Rivi Watie	Pekanbaru, Riau	(tantierw@trimegah.com)
Agus Bambang Suseno	Solo, Jawa Tengah	(agus.suseno@trimegah.com)
Agus Bambang Suseno	Yogyakarta, Jawa Tengah	(agus.suseno@trimegah.com)
Donny Kristanto Setiadi	Palembang, Sumatra Selatan	(donny.kristanto@trimegah.com)
Sonny Muljadi	Malang, Jawa Timur	(sonny.muljadi@trimegah.com)

PT Trimegah Securities Tbk
18th Fl, Artha Graha Building
Jl. Jend. Sudirman Kav. 52-53
Jakarta 12190, INDONESIA
Tel : (6221) 2924 9088 Fax : (6221) 2924 9163

DISCLAIMER

This report has been prepared by PT Trimegah Securities Tbk on behalf of itself and its affiliated companies and is provided for information purposes only. Under no circumstances is it to be used or considered as an offer to sell, or a solicitation of any offer to buy. This report has been produced independently and the forecasts, opinions and expectations contained herein are entirely those of Trimegah Securities.

While all reasonable care has been taken to ensure that information contained herein is not untrue or misleading at the time of publication, Trimegah Securities makes no representation as to its accuracy or completeness and it should not be relied upon as such. This report is provided solely for the information of clients of Trimegah Securities who are expected to make their own investment decisions without reliance on this report. Neither Trimegah Securities nor any officer or employee of Trimegah Securities accept any liability whatsoever for any direct or consequential loss arising from any use of this report or its contents. Trimegah Securities and/or persons connected with it may have acted upon or used the information herein contained, or the research or analysis on which it is based, before publication. Trimegah Securities may in future participate in an offering of the company's equity securities.