

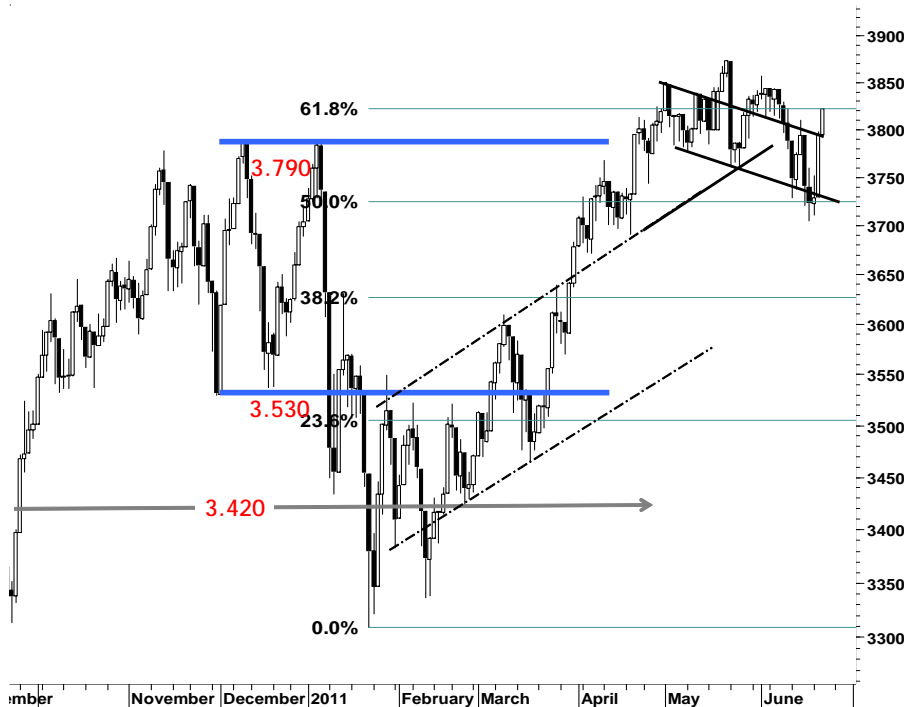
IHSG

3.821,8

26,9

0,71%

Ulasan Pasar

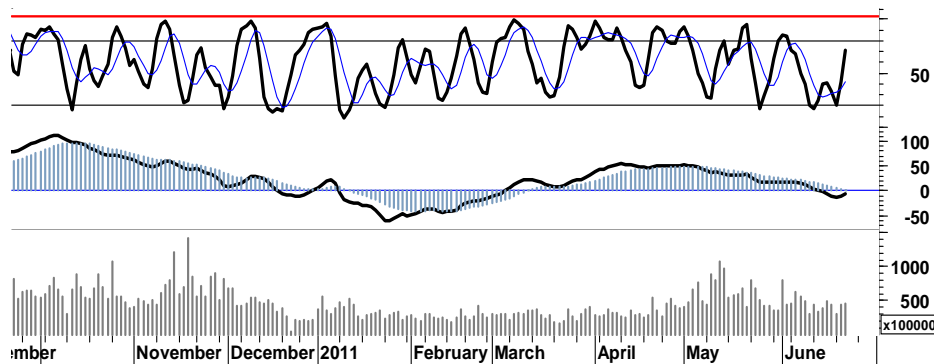


Ditengah situasi pergerakan bursa-bursa utama Asia yang kondusif, dimana saham-saham unggulan melanjutkan rally penguatannya serta merta mendorong IHSG melakukan penetrasi resistensi harga di level 3.790. Dengan ditutup menguat 0,7% di level 3.822, sekalipun aktifitas perdagangan kemarin berjalan moderat dengan tercatat hanya 57rb transaksi hingga akhir sesi perdagangan.

Terjadi pula kelanjutan akumulasi pembelian terhadap saham-saham sektor pertambangan dan peningkatan rasio volume perdagangan sebesar 7% dimana para pelaku asing kembali mencatatkan total nilai pembelian bersih sebesar Rp529miliar, yang pada akhirnya mendorong IHSG menembus resistensi 3.820.

Signal positif yang tercermin dalam leading indicator maupun arus distribusi diharapkan mampu memberikan angin segar untuk selanjutnya mendampingi IHSG bertahan dalam rentang harga 3.800-3.840.

Selanjutnya pada perdagangan hari ini IHSG kami perkirakan akan mencoba bertahan di zona positif dalam interval harga 3.805-3.840.



S1	S2	R1	R2
3,805	3,785	3,830	3,840

Saham Pilihan

Saham	Harga (Rp)	Rekomendasi	Stochastic	RSI	BB Top	BB Bottom	S1	S2	R1	R2
AKRA	1,980	StrongSell	95.12	80.46	2,050	1,740	1,940	1,890	2,030	2,080
BMRI	7,050	OverBought	71.43	54.42	7,150	6,750	6,950	6,850	7,150	7,250
GGRM	46,950	StrongSell	83.64	64.40	48,000	44,200	46,300	45,650	47,750	48,400
ITMG	45,350	Trading	40.00	40.81	45,900	44,200	45,000	44,650	46,150	46,500
SMRA	1,200	StrongSell	90.48	62.48	1,240	1,100	1,180	1,160	1,220	1,240
UNVR	15,000	OverBought	72.73	57.57	15,050	14,700	14,900	14,800	15,100	15,200



Fast-moving oscillator yang telah merambah area overbought, mengindikasikan bayang-bayang aksi profit taking akan mengiringi pergerakan harga AKRA hari ini, meskipun gambaran umum, AKRA masih dalam bullish trend.

Rally penguatan kemarin telah membawa AKRA melakukan penetrasi resistensi 1.920. Dimana kondisi tersebut membuka peluang bagi AKRA untuk selanjutnya bergerak dalam rentang 1.890 - 2.030.

S1	S2	R1	R2
1,940	1,890	2,030	2,080



Dengan masih tersisanya ruang bagi BMRI untuk melanjutkan rally penguatan, maka terbuka momentum untuk bergerak menutup celah resistensi harga 7.150.

Akumulasi profit yang mungkin telah diperoleh, pada saat BMRI bergerak menguji resistensi 7.250.

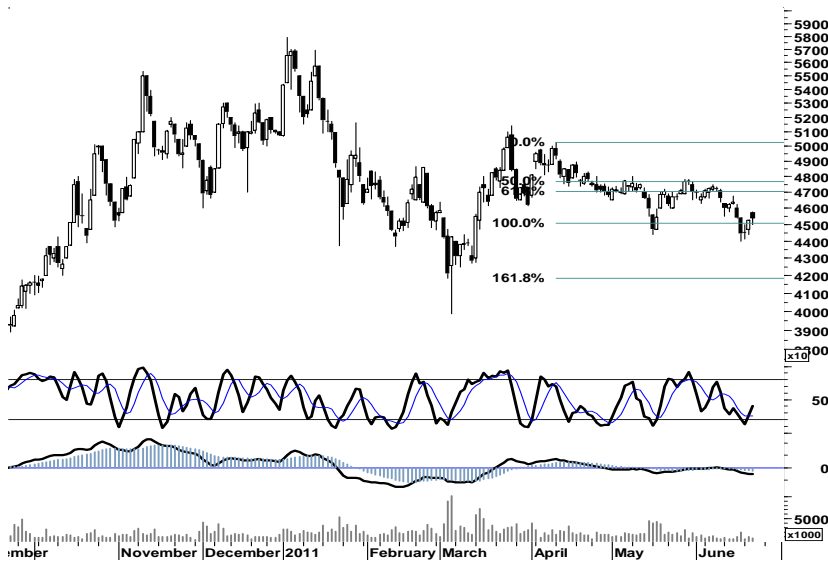
S1	S2	R1	R2
6,950	6,850	7,150	7,250



Sekalipun dominasi aksi beli yang terjadi kemarin mampu membawa GGRM memasuki zona positif, yang selanjutnya membuka peluang untuk bergerak dalam rentang harga 46.100 - 47.300 dengan basis support 46.000. Waspadai bayang-bayang aksi profit taking yang mungkin terjadi pada area overbought.

Kami perkirakan GGRM akan mencoba bergerak dalam rentang harga 46.000 - 47.000.

S1	S2	R1	R2
46,300	45,650	47,750	48,400



Signal positif golden cross pada fast moving oscillator yang terbentuk kemarin, diharapkan mampu memberikan dukungan positif untuk dapat mendorong ITMG menguji pencapaian resistensi harga 46.500.

Kami perkirakan ITMG pada perdagangan hari ini akan mencoba bergerak positif dalam rentang harga 45.500 - 46.150.

S1	S2	R1	R2
45,000	44,650	46,150	46,500



Apabila SMRA mampu untuk bergerak positif, serta melakukan penetrasi resistensi harga 1.220, maka terbuka peluang konfirmasi indikasi double bottom dengan target harga Rp1.350.

Yang perlu diwaspadai adalah kondisi overbought serta pelemahan rasio perdagangan sebesar 29%, yang memberikan indikasi bayang-bayang aksi profit taking serta uji kekuatan support 1.180.

Kami perkirakan SMRA akan bergerak dengan diwarnai aksi profit taking, dan menguji kekuatan support 1.180.

S1	S2	R1	R2
1,180	1,160	1,220	1,240



Masih terbuka peluang bagi UNVR untuk bergerak positif dalam rentang harga 14.800-15.100, berdasarkan signal positif stochastic yang ada serta sisa ruang penguatan yang masih terbuka.

S1	S2	R1	R2
14,900	14,800	15,100	15,200

TRADE DATA

JCI (IHSG) 3,821.8 26.9 0.71%

YTD (Rp)	3.2% Volume (m) :	4,357
YTD (USD)	7.8% Nilai (Rpbn) :	3,762
Moving Avg 20day	3,800 Mkt Cap (Rptr) :	3,430
Moving Avg 50day	3,796 Market P/E (x) :	16.2
Moving Avg 200day	3,612 Market Div. Yield (%) :	2.4

Indonesia & Sectors +/- (%) YTD (%)

MSCI Indonesia	4,716.6	39.2	0.84	3.74
JII	524.1	3.3	0.64	-1.65
LQ45	675.9	5.0	0.75	2.19
JAKFIN Index	495.9	5.3	0.01	6.27
JAKINFR Index	767.8	1.9	0.00	-6.28
JAKMINE Index	3,256.9	20.2	0.01	-0.53
JAKCONS Index	1,157.7	7.4	0.01	5.76
JAKTRAD Index	518.4	5.0	0.01	9.35
JAKMIND Index	1,083.3	13.3	0.01	12.02
JAKBIND Index	398.2	0.4	0.00	2.83
JAKPROP Index	206.7	1.3	0.01	1.78
JAKAGRI Index	2,307.2	-0.3	-0.00	1.00

Commodities +/- (%) YTD (%)

CRB Index	337.91	-0.2	-0.07	1.54
Oil & Gas				
Crude Oil	95.41	2.0	2.15	4.41
Natural Gas	4.32	-0.1	-1.62	-2.00
COAL (Rotterdam)	122.75	-0.1	-0.08	-6.58
COAL (Amsterdam)	122.03	0.4	0.35	-3.11
COAL (Australia,wk)	118.60	0.0	0.00	-3.10
Industrial Metals				
Aluminium	2,530.8	9.3	0.37	2.91
Nickel	22,150	270	1.23	-10.51
Tin	25,375	-75	-0.29	-5.67
Precious Metal				
Gold	1,553.40	7.0	0.45	9.29
Silver	36.74	0.4	0.99	18.86
Soft Commodities				
CPO (Malaysia)	3,205.00	-47.0	-1.45	-15.97
CPO (Netherlands)	1,130.00	10.0	0.89	-12.06
Rubber	4,862.37	-153.2	-3.05	-2.63
Corn	677.50	-30.0	-4.24	7.71
Wheat	638.25	-36.0	-5.34	-19.64
Soybeans	1,330.25	-18.5	-1.37	-4.56
Rice (Indonesia)	6,850.00	0.0	0.00	-3.52

Winners

Stock	Price	(%)	Stock	Price	(%)
BNII	570	5.56	TFCO	540	-12.90
BUMI	3,200	3.23	EMTK	1,800	-3.23
ASII	60,000	1.52	GIAA	520	-1.89
BMRI	7,050	1.44	BRMS	750	-1.32
BBCA	7,300	1.39	SMCB	2,175	-1.14
BBNI	3,775	1.34	PTBA	20,750	-0.72
UNTR	23,500	1.08	BORN	1,450	-0.68
UNVR	15,000	1.01	AALI	23,150	-0.64
GGRM	46,950	0.75	PGAS	4,000	-0.62
TLKM	7,150	0.70	SMGR	9,650	-0.52

Losers

Regional Indices +/- (%) YTD (%)

MXWO	MSCI World	1,299.5	-2.2	-0.17	1.52
SPX	S&P 500	1,287.1	-8.4	-0.65	2.35
US					
Dow Jones Industrial		12,109.7	-80.3	-0.66	4.60
Nasdaq	US	2,669.2	-18.1	-0.67	0.62
Europe					
EURO 50	Europe	268.1	-1.5	-0.56	-2.81
FTSE	London	5,773.0	-2.3	-0.04	-2.15
DAX	Germany	7,278.2	-7.3	-0.10	5.26
CAC	France	3,871.4	-5.7	-0.15	1.75
SMI	Swiss	6,113.4	-57.6	-0.93	-5.01
BRIC					
BOVESPA	Brazil	61,194.1	-229.5	-0.37	-11.70
MICEX	Russia	1,640.1	4.8	0.29	-2.84
SENSEX	India	17,550.6	-9.7	-0.06	-14.43
NIFTY	India	5,278.3	2.4	0.05	-13.96
SHCOMP	China	2,649.3	2.8	0.11	-5.65
SZCOMP	China	1,088.3	-0.4	-0.04	-15.69

Developed ASIA

Nikkei	Japan	9,629.4	169.8	1.79	-5.86
TPX	Japan	829.0	13.3	1.63	-7.77
HIS	Hong kong	21,860.0	9.4	0.04	-5.10
KOSPI	S. Korea	2,063.9	15.7	0.77	0.63
TAIEX	Taiwan	8,621.0	23.4	0.27	-3.92
FSSTI	Singapore	3,042.8	-10.7	-0.35	-4.61

ASEAN

SET	Thailand	1,023.9	-3.9	-0.38	-0.86
PCOMP	Philippines	4,245.3	33.5	0.79	1.05
KLCI	Malaysia	1,567.4	6.6	0.42	3.19
VNINDEX	Vietnam	439.6	-3.1	-0.70	-9.29

Currency +/- (%) YTD (%)

EURUSD	Euro	1.436	-0.006	-0.38	7.27
GBPUSD	United Kingdom	1.607	-0.017	-1.07	2.94
USDCHF	Switzerland	0.839	-0.001	-0.15	-10.27
USDCAD	Canada	0.974	0.003	0.29	-2.41
AUDUSD	Australia	1.058	-0.003	-0.28	3.34
NZDUSD	New Zealand	0.815	0.002	0.25	4.41
USDJPY	Japan	80.3	0.080	0.10	-1.02
USDCNY	China	6.464	-0.002	-0.02	-2.17
USDHKD	Hongkong	7.787	-0.002	-0.03	0.18
USDSGD	Singapore	1.233	0.000	0.04	-3.93
Rupiah	Indonesia	8,593.0	-8.000	-0.09	-4.48

Value

Value (Rpbn)	Volume (Lot)	Freq (x)
BUMI 363,009	ENRG 942,991	IPOL 6,138
ASII 195,364	BNBR 876,815	BHIT 6,036
BBRI 153,392	DEWA 795,740	BUMI 3,960
LPKR 130,961	ELTY 616,157	INDS 3,737
BMRI 129,393	LPKR 402,498	CLPI 3,418
BBCA 114,973	BHIT 353,089	BBRI 2,380
ENRG 96,056	IPOL 254,332	LPKR 2,296
INDF 90,762	BUMI 229,161	ENRG 2,074
BBNI 76,110	TRAM 157,664	BMRI 1,859
TLKM 68,155	TRUB 104,235	ASII 1,789

Code	Last	Ytd Chg(%)	H-5 Chg (%)	Rekomendasi	STO	RSI	MACD	Bollinger Band		Support			Resistance			H-5	
								Top	Bottom	1	2	3	1	2	3	Highest	Lowest
AALI	23,150	-13.62	0.43	OverBought	73.3	49.8	(85.4)	23,550	22,700	23,000	22,850	22,600	23,400	23,650	23,800	23,500	22,600
ACES	3,000	5.26	0.00	StrongSell	91.7	60.9	79.4	3,075	2,900	2,975	2,950	2,925	3,025	3,050	3,075	3,000	2,600
ADRO	2,375	-11.21	-1.04	Trading	54.5	51.4	6.0	2,450	2,275	2,350	2,325	2,300	2,400	2,425	2,450	2,450	2,250
AKRA	1,980	16.47	9.39	StrongSell	95.1	80.5	53.0	2,050	1,740	1,940	1,890	1,870	2,010	2,030	2,080	1,980	1,770
ANTM	2,050	-17.17	-3.53	Accumulate	24.4	32.9	(44.2)	2,075	2,000	2,025	2,000	1,975	2,075	2,100	2,125	2,150	1,990
ASII	60,000	10.29	1.69	StrongSell	90.1	59.4	284.6	60,500	57,750	59,500	58,950	58,650	60,350	60,650	61,200	60,100	57,350
BBCA	7,300	13.18	2.10	OverBought	73.7	57.6	(6.8)	7,400	7,150	7,200	7,100	7,050	7,350	7,400	7,500	7,350	7,000
BBNI	3,775	-0.66	2.03	OverBought	69.2	49.4	(54.7)	3,850	3,575	3,750	3,700	3,675	3,825	3,850	3,900	3,800	3,550
BBRI	6,350	22.71	-0.78	OverBought	68.4	52.3	(6.8)	6,500	6,150	6,350	6,300	6,250	6,450	6,500	6,550	6,450	6,100
BBTN	1,660	-0.60	0.61	OverBought	77.3	51.8	(7.5)	1,690	1,610	1,650	1,630	1,620	1,680	1,690	1,710	1,670	1,590
BDMN	5,900	7.27	-1.67	OverSold	33.3	42.4	(54.6)	5,950	5,850	5,850	5,800	5,750	5,950	6,000	6,050	6,050	5,800
BISI	1,380	-26.20	0.73	Trading	47.6	35.3	(74.9)	1,420	1,270	1,350	1,320	1,280	1,420	1,460	1,490	1,430	1,270
BMRI	7,050	9.30	1.44	OverBought	71.4	54.4	(34.6)	7,150	6,750	6,950	6,850	6,800	7,100	7,150	7,250	7,050	6,700
BSDE	890	1.14	1.14	OverBought	76.0	50.9	(9.7)	920	820	880	870	860	900	910	920	900	810
BTEL	355	51.06	-1.39	OverBought	66.7	39.8	(5.7)	360	352	352	349	347	357	359	362	360	345
BUMI	3,200	2.40	-2.29	OverSold	39.5	44.0	(78.7)	3,275	2,950	3,150	3,100	3,050	3,250	3,300	3,350	3,350	2,950
CTRA	420	20.00	-3.45	OverSold	37.5	50.9	4.7	425	417	419	417	414	424	427	429	440	410
ELTY	148	-8.07	-1.33	Trading	40.8	44.2	(2.9)	152	138	147	145	143	151	153	155	156	138
EXCL	6,250	19.05	0.81	OverBought	77.8	56.1	(8.8)	6,350	6,200	6,200	6,150	6,100	6,300	6,350	6,400	6,300	6,000
GGRM	46,950	14.37	1.51	StrongSell	83.6	64.4	864.5	48,000	44,200	46,300	45,650	45,250	47,350	47,750	48,400	47,050	44,100
HEXA	6,600	-8.97	3.13	TakeProfit	71.4	60.8	42.8	6,750	6,100	6,500	6,350	6,300	6,700	6,750	6,900	6,600	6,150
INCO	4,500	-9.55	-1.64	Trading	55.6	31.3	(87.4)	4,550	4,475	4,450	4,400	4,350	4,550	4,600	4,650	4,625	4,375
INDF	5,600	13.13	4.67	OverBought	76.0	59.7	(12.6)	5,850	5,200	5,550	5,500	5,400	5,700	5,800	5,850	5,700	5,200
INDY	3,825	-25.00	-3.16	Accumulate	39.5	38.8	(79.6)	3,950	3,675	3,800	3,750	3,700	3,900	3,950	4,000	4,000	3,650
INTP	16,850	4.98	0.30	Trading	55.6	49.7	(55.7)	17,050	16,550	16,800	16,700	16,650	16,950	17,000	17,100	17,000	16,400
ISAT	5,150	-5.50	0.00	Trading	58.3	45.5	(38.4)	5,250	5,050	5,100	5,050	5,000	5,200	5,250	5,300	5,200	5,000
ITMG	45,350	-16.48	-2.26	Trading	40.0	40.8	(499.1)	45,900	44,200	45,000	44,650	44,250	45,750	46,150	46,500	46,750	44,000
JSMR	3,525	-0.70	2.17	StrongSell	88.2	62.9	15.4	3,575	3,425	3,500	3,450	3,425	3,575	3,600	3,650	3,550	3,375
KLBF	3,425	3.01	3.79	StrongSell	86.4	51.8	(35.7)	3,525	3,250	3,400	3,375	3,325	3,475	3,525	3,550	3,475	3,225
LSIP	2,300	-9.45	-3.16	OverSold	29.4	41.1	(27.4)	2,350	2,250	2,275	2,250	2,225	2,325	2,350	2,375	2,400	2,250
MYOR	12,950	19.91	-0.38	TakeProfit	69.2	61.0	239.2	13,050	12,900	12,700	12,450	12,200	13,200	13,450	13,700	13,200	12,700
PGAS	4,000	-10.61	0.00	OverBought	76.9	50.8	(7.2)	4,075	3,975	3,975	3,950	3,900	4,050	4,100	4,125	4,050	3,925
PTBA	20,750	-13.36	-1.19	Trading	40.0	39.3	(211.3)	21,050	20,550	20,600	20,450	20,200	21,000	21,250	21,400	21,100	20,500
RALS	800	-6.98	3.90	Trading Sell	50.0	53.2	3.2	820	760	20,870	20,870	20,870	20,870	20,870	20,870	820	760
SGRO	3,400	4.62	0.74	OverBought	66.7	52.6	(8.0)	3,500	3,275	3,400	3,375	3,350	3,450	3,475	3,500	3,450	3,275
SMCB	2,175	-2.25	0.00	Trading	55.6	51.0	6.9	2,250	2,150	2,175	2,150	2,125	2,225	2,250	2,275	2,250	2,100
SMGR	9,650	-2.03	2.66	StrongSell	92.6	56.8	16.8	9,800	9,550	9,550	9,450	9,350	9,750	9,850	9,950	9,700	9,300
SMRA	1,200	11.11	5.26	StrongSell	90.5	62.5	3.1	1,240	1,100	1,180	1,160	1,150	1,210	1,220	1,240	1,200	1,110
TINS	2,400	-15.79	-4.00	Accumulate	30.8	25.4	(77.2)	2,450	2,350	2,375	2,350	2,325	2,425	2,450	2,475	2,575	2,325
TLKM	7,150	-10.63	-1.38	Trading	55.2	40.5	(139.0)	7,300	6,850	7,100	7,050	7,000	7,200	7,250	7,300	7,300	6,800
UNTR	23,500	-3.29	2.62	StrongSell	91.7	64.5	192.8	23,800	22,600	23,400	23,300	23,200	23,600	23,700	23,800	23,550	22,500
UNVR	15,000	-6.54	1.01	OverBought	72.7	57.6	(22.4)	15,050	14,700	14,900	14,800	14,750	15,050	15,100	15,200	15,000	14,600

S1 = Support 1 S2 = Support 2 S3 = Support 3
 R1 = Resisten 1 R2 = Resisten 2 R2 = Resisten 2
 STO = Stochastic Oscillator
 RSI = Relative Strength Index
 MACD = Moving Average Convergence Divergence
 H-5 = 5 hari sebelumnya

RESEARCH TEAM

Andrian Tanuwijaya	Equity Analyst	(andrian.tanuwijaya@trimegah.com)
Hanel Topada Era Tania	Equity Analyst	(hanel.tania@trimegah.com)
Paul Raymond Widjaja	Equity Analyst	(paul.widjaja@trimegah.com)
T Hedy Arifien	Technical Analyst	(hedy@trimegah.com)
Rovandi	Research Assistant	(rovandi@trimegah.com)

EQUITY CAPITAL MARKET TEAM

Nathanael Benny Prasetyo	Head of Retail ECM	(benny.prasetyo@trimegah.com)
Windra Djulnaily	Pluit, Jakarta	(windra.djulnaily@trimegah.com)
Ariawan Anwar	Artha Graha, Jakarta	(ariawan.anwar@trimegah.com)
Ferry Zabur	Kelapa Gading, Jakarta	(ferry.zabur@trimegah.com)
Wirjawan Joesoef	Mangga Dua, Jakarta	(iwan@trimegah.com)
Lukman Abdul Azis	Kebon Jeruk, Jakarta	(lukman@trimegah.com)
Tutik Suciati	Semarang, Jawa Tengah	(tuty.s@trimegah.com)
Sonny Muljadi	Surabaya, Jawa Timur	(sonny.muljadi@trimegah.com)
Ni Luh Ketut Sri Agustini	Denpasar, Bali	(sri.agustini@trimegah.com)
Philip Fernando Suwandi	Makassar, Sulawesi Selatan	(philip.fs@trimegah.com)
agus.jatmiko	Balikpapan, Kalimantan Timur	(agus.jatmiko@trimegah.com)
Asep Saepudin	Bandung, Jawa Barat	(asep.saepudin@trimegah.com)
Asep Saepudin	Cirebon, Jawa Barat	(asep.saepudin@trimegah.com)
Very Wijaya	Medan, Sumatera Utara	(very.wijaya@trimegah.com)
Tantie Rivi Watie	Pekanbaru, Riau	(tantierw@trimegah.com)
Agus Bambang Suseno	Solo, Jawa Tengah	(agus.suseno@trimegah.com)
Agus Bambang Suseno	Yogyakarta, Jawa Tengah	(agus.suseno@trimegah.com)
Donny Kristanto Setiadi	Palembang, Sumatra Selatan	(donny.kristanto@trimegah.com)
Sonny Muljadi	Malang, Jawa Timur	(sonny.muljadi@trimegah.com)

PT Trimegah Securities Tbk
18th Fl, Artha Graha Building
Jl. Jend. Sudirman Kav. 52-53
Jakarta 12190, INDONESIA
Tel : (6221) 2924 9088 Fax : (6221) 2924 9163

DISCLAIMER

This report has been prepared by PT Trimegah Securities Tbk on behalf of itself and its affiliated companies and is provided for information purposes only. Under no circumstances is it to be used or considered as an offer to sell, or a solicitation of any offer to buy. This report has been produced independently and the forecasts, opinions and expectations contained herein are entirely those of Trimegah Securities.

While all reasonable care has been taken to ensure that information contained herein is not untrue or misleading at the time of publication, Trimegah Securities makes no representation as to its accuracy or completeness and it should not be relied upon as such. This report is provided solely for the information of clients of Trimegah Securities who are expected to make their own investment decisions without reliance on this report. Neither Trimegah Securities nor any officer or employee of Trimegah Securities accept any liability whatsoever for any direct or consequential loss arising from any use of this report or its contents. Trimegah Securities and/or persons connected with it may have acted upon or used the information herein contained, or the research or analysis on which it is based, before publication. Trimegah Securities may in future participate in an offering of the company's equity securities.