

IHSG

4,005.4

4.0

0.10%

Ulasan Pasar



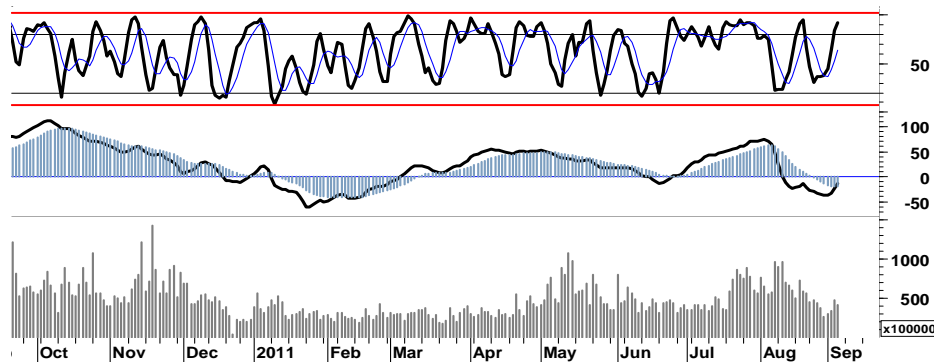
Meredanya sentimen krisis utang Eropa dan perlambatan pertumbuhan perekonomian Amerika, ditengarai merupakan katalis yang membawa suasana kondusif terhadap pergerakan mayoritas bursa Asia dan Pacific pada perdagangan kemarin.

Katalis tersebut juga merupakan salah satu faktor yang kembali menumbuhkan minat investor asing dalam melakukan bargain hunting terhadap sejumlah saham favorit maupun unggulan, dengan terbukti tercatatnya nilai pembelian bersih sebesar Rp545,4 miliar. Sekalipun diwarnai oleh aksi pengambilan keuntungan saham-saham blue-chips, IHSG berhasil untuk bertahan pada zona hijau dengan membukukan penguatan tipis sebesar 0,1% dan bertengger di level 4.006. Setelah sebelumnya mencoba menguji resistensi harga 4.020, dengan menciptakan swing positif di level tertingginya kemarin 4.022.

Munculnya pola candle doji di penghujung rally

penguatannya kemarin, sementara ruang untuk melanjutkan perjalanan menguji resistensi 4.050 mulai terbatas sebagaimana tercermin pada stochastic oscillator yang mulai memasuki area overbought.

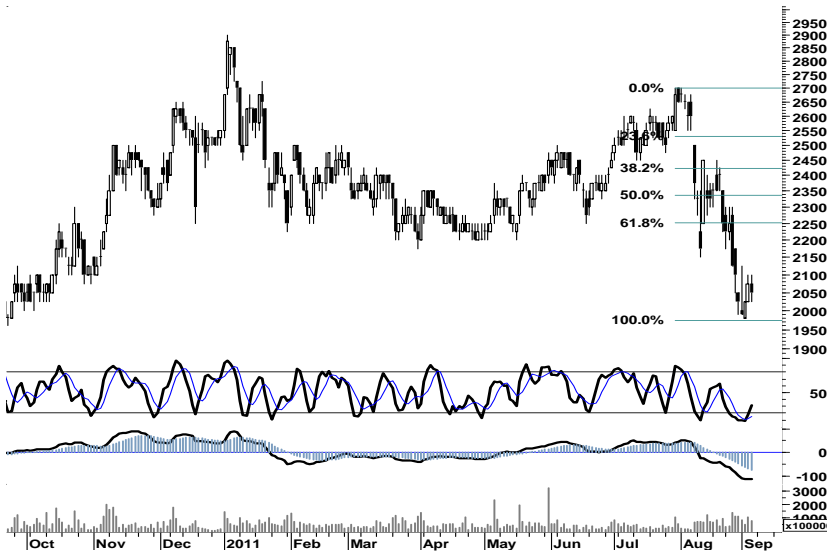
Fluktuasi pergerakan harga akan kembali mewarnai IHSG pada perdagangan hari ini untuk menguji interval harga 3.980 - 4.030, dengan strategi STRONGSELL (Short-term Trading) saat IHSG mencoba merambah area resistensi harga 4.020/4.025 yang kami perkirakan akan terjadi di tengah perdagangan sesi pertama.



S1	S2	R1	R2
3,980	3,960	4,025	4,045

## Saham Pilihan

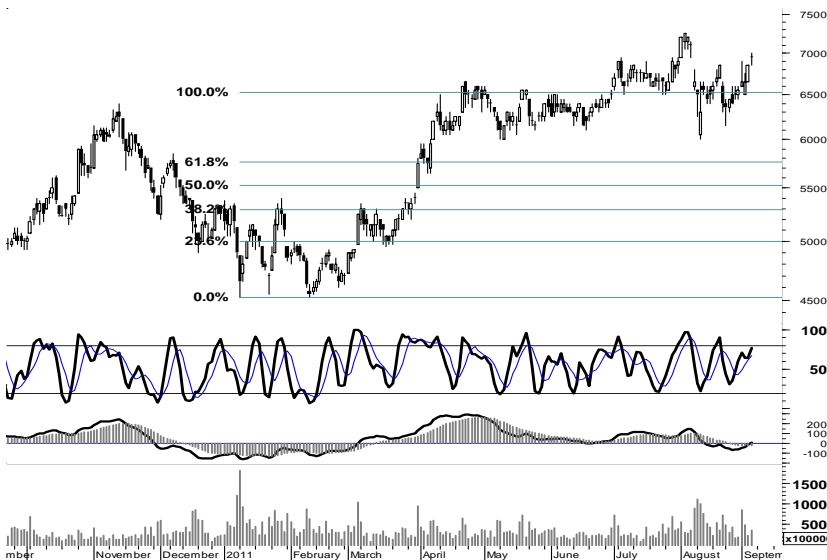
Saham	Harga (Rp)	Rekomendasi	Stochastic	RSI	BB Top	BB Bottom	S1	S2	R1	R2
ADRO	2,050	TradingBuy	31.82	35.62	2,100	2,000	2,025	2,000	2,150	2,175
BBRI	6,950	TakeProfit	76.67	60.03	7,100	6,550	6,900	6,800	7,100	7,200
BSDE	1,000	Spec.Buy	18.18	49.96	1,040	980	1,000	995	1,015	1,020
LSIP	2,325	TradingBuy	16.67	46.67	2,400	2,300	2,300	2,275	2,425	2,450
MAPI	4,725	TakeProfit	92.45	64.40	4,925	4,100	4,625	4,500	4,850	4,975
SGRO	3,500	Trading	53.85	49.79	3,550	3,450	3,500	3,500	3,550	3,550



Signal positif yang tercermin pada stochastic serta distribusi neutral, seyogyanya mampu memberikan peluang bagi ADRO untuk melanjutkan rally penguatan menguji 2.150.

Kami perkirakan ADRO pada perdagangan hari ini akan mencoba menguji pergerakan dalam interval harga 1.950.

S1	S2	R1	R2
2,025	2,000	2,150	2,175



Celah resistensi harga di level 6.950 sepenuhnya tertutup, pasca BBRI melakukan perlawanan beli ditengah upaya para investor mmbukukan keuntungan yang telah diperoleh.

Berdasarkan asumsi tersebut di atas, akumulasi keuntungan pada saat BBRI menguji resistensi area harga 7.100.

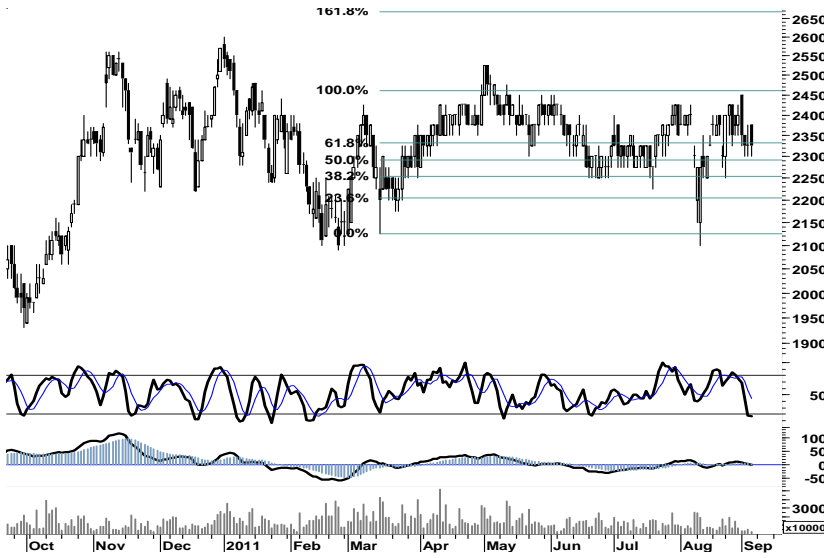
S1	S2	R1	R2
6,900	6,800	7,100	7,200



Keterbatasan ruang tekanan yang tercermin pada stochastic, seharusnya merupakan momentum akumulasi bagi saham BSDE.

Dengan menentukan stop-loss pada support di level 950, spekulasi pembelian BSDE dapat dilakukan dengan pemanfaatan ruang interval harga 1.000 - 1.020.

S1	S2	R1	R2
1,000	995	1,015	1,020



Ditutup pada area pivot support 2.325 - 2.350, LSIP memiliki peluang yang berimbang. Apabila pada perdagangan hari ini support retracement 62% di level 2.325 mampu untuk menahan laju tekanan, maka terbuka peluang bagi LSIP untuk menguji kekuatan resistensi harga 2.425.

Setidaknya keterbatasan ruang pelemahan, membuka peluang bagi LSIP untuk bergerak dalam rentang harga 2.300 - 2.425.

S1	S2	R1	R2
2,300	2,275	2,425	2,450



Signal positif distribusi pada MACD merupakan katalis positif yang memberikan peluang bagi MAPI untuk selanjutnya bertahan pada tren support channel dalam upaya pencapaian target resisten 5.250.

Namun demikian, terbatasnya ruang penguatan harga serta melemahnya kekuatan rally mengisyaratkan MAPI akan tertahan aksi profit taking pada saat mendekati resistensi kuat di level 4.800.

Akumulasi sebagian profit yang telah diperoleh, pada resistensi harga 4.800 - 4.850.

S1	S2	R1	R2
4,625	4,500	4,850	4,975



Secara umum, SGRO masih mencoba bertahan pada kondisu uptrend bullish.

Ditutup pada area pivot support 3.500 membuka peluang bagi SGRO untuk bergerak menguji resistensi harga terdekat 3.550, seandainya mampu bertahan pada support psikologis 3.500 tersebut.

S1	S2	R1	R2
3,500	3,500	3,550	3,550

## TRADE DATA

### JCI (IHSG) 4,005.4 4.0 0.10%

YTD (Rp)	8.2% Volume (m) :	9,996
YTD (USD)	13.4% Nilai (Rpbn) :	3,328
Moving Avg 20day	3,902 Mkt Cap (Rpbn) :	3,439
Moving Avg 50day	3,962 Market P/E (x) :	16.2
Moving Avg 200day	3,729 Market Div. Yield (%) :	2.4

### Indonesia & Sectors +/- (%) YTD (%)

MSCI Indonesia	4,958.3	-5.9	-0.12	9.06
JII	555.0	-2.8	-0.50	4.15
LQ45	709.7	-0.4	-0.06	7.30
JAKFIN Index	529.2	4.2	0.01	13.39
JAKINFR Index	747.1	-7.7	-0.01	-8.80
JAKMINE Index	3,016.2	-19.8	-0.01	-7.88
JAKCONS Index	1,329.2	13.5	0.01	21.42
JAKTRAD Index	544.2	4.1	0.01	14.80
JAKMIND Index	1,284.2	-2.0	-0.00	32.80
JAKBIND Index	412.1	-3.7	-0.01	6.41
JAKPROP Index	233.4	0.2	0.00	14.93
JAKAGRI Index	2,318.4	1.6	0.00	1.49

### Commodities +/- (%) YTD (%)

CRB Index	339.90	0.1	0.03	2.13
<b>Oil &amp; Gas</b>				
Crude Oil	89.05	-0.3	-0.32	-2.55
Natural Gas	3.98	0.0	1.02	-9.65
COAL (Rotterdam)	127.65	-0.3	-0.23	-2.85
COAL (Amsterdam)	126.88	0.0	0.02	0.74
COAL (Australia,wk)	120.55	0.0	0.00	-1.51
<b>Industrial Metals</b>				
Aluminium	2,401.75	15.5	0.65	-2.34
Nickel	22,075	300	1.38	-10.81
Tin	24,475	100	0.41	-9.01
<b>Precious Metal</b>				
Gold	1,855.20	40.3	2.22	30.52
Silver	42.53	0.9	2.16	37.59
<b>Soft Commodities</b>				
CPO (Malaysia)	3,069.00	-20.0	-0.65	-19.53
CPO (Netherlands)	1,102.50	12.5	1.15	-14.20
Rubber	4,675.53	31.7	0.68	-6.37
Corn	734.00	-14.0	-1.87	16.69
Wheat	738.00	-13.5	-1.80	-7.08
Soybeans	1,418.25	-2.5	-0.18	1.76
Rice (Indonesia)	7,500.00	0.0	0.00	5.63

### Winners

Stock	Price	(%)	Stock	Price	(%)
TRAM	870	24.29	EMTK	2,200	-8.33
DSSA	14,100	20.00	BRMS	650	-4.41
ICBP	5,300	6.00	ISAT	5,800	-3.33
BBRI	6,950	1.46	TLKM	7,650	-3.16
BMRI	7,200	1.41	BORN	1,240	-3.13
BBNI	4,200	1.20	CPIN	2,875	-2.54
GGRM	59,350	1.11	INTP	15,600	-1.89
UNTR	24,900	1.01	ITMG	46,000	-1.39
UNVR	17,550	0.86	ADRO	2,050	-1.20
BBCA	8,400	0.60	ASII	71,000	-0.35

### Losers

Stock	Price	(%)	Stock	Price	(%)
EMTK	2,200	-8.33	ASII	71,000	-0.35
BRMS	650	-4.41			
ISAT	5,800	-3.33			
TLKM	7,650	-3.16			
BORN	1,240	-3.13			
CPIN	2,875	-2.54			
INTP	15,600	-1.89			
ITMG	46,000	-1.39			
ADRO	2,050	-1.20			

### Regional Indices +/- (%) YTD (%)

MXWO	MSCI World	1,169.6	-3.8	-0.33	-8.63
SPX	S&P 500	1,185.9	-12.7	-1.06	-5.70
<b>US</b>					
Dow Jones Industrial		11,295.8	-119.1	-1.04	-2.43
Nasdaq	US	2,529.1	-19.8	-0.78	-4.66
<b>Europe</b>					
EURO 50	Europe	230.5	1.6	0.71	-16.44
FTSE	London	5,340.4	21.8	0.41	-9.48
DAX	Germany	5,408.5	2.9	0.05	-21.78
CAC	France	3,085.8	12.7	0.41	-18.90
SMI	Swiss	5,528.9	27.6	0.50	-14.09
<b>BRIC</b>					
BOVESPA	Brazil	57,623.6	1,016.3	1.80	-16.85
MICEX	Russia	1,556.5	9.9	0.64	-7.79
SENSEX	India	17,165.5	100.5	0.59	-16.30
NIFTY	India	5,153.3	28.6	0.56	-16.00
SHCOMP	China	2,498.9	-17.1	-0.68	-11.01
SZCOMP	China	1,100.5	-10.7	-0.96	-14.74

### Developed ASIA

Nikkei	Japan	8,793.1	29.7	0.34	-14.04
TPX	Japan	757.4	3.8	0.50	-15.73
HIS	Hong kong	19,912.8	-135.2	-0.67	-13.56
KOSPI	S. Korea	1,846.6	13.2	0.72	-9.96
TAIEX	Taiwan	7,548.4	19.4	0.26	-15.87
FSSTI	Singapore	2,856.9	24.8	0.87	-10.44

### ASEAN

SET	Thailand	1,072.2	3.5	0.33	3.82
PCOMP	Philippines	4,356.7	41.5	0.96	3.70
KLCI	Malaysia	1,469.8	5.2	0.36	-3.23
VNINDEX	Vietnam	453.3	9.3	2.09	-6.48

### Currency +/- (%) YTD (%)

EURUSD	Euro	1.388	-0.017	-1.21	3.72
GBPUSD	United Kingdom	1.596	-0.002	-0.15	2.22
USDCHF	Switzerland	0.876	0.018	2.12	-6.37
USDCAD	Canada	0.990	0.001	0.14	-0.85
AUDUSD	Australia	1.058	-0.003	-0.31	3.35
NZDUSD	New Zealand	0.831	0.002	0.22	6.50
USDJPY	Japan	77.5	0.310	0.40	-4.45
USDCNY	China	6.384	-0.011	-0.18	-3.38
USDHKD	Hongkong	7.794	-0.001	-0.01	0.27
USDSGD	Singapore	1.216	0.007	0.56	-5.28
Rupiah	Indonesia	8,564.0	0.000	0.00	-4.80

### Value (Rpbn) Volume (Lot) Freq (x)

BMRI	307,118	ENRG	603,321	MRAT	8,991
ASII	245,689	KIJA	582,613	PTPP	7,527
BBRI	242,664	TMPI	383,328	TMPI	7,205
INDF	235,089	BNBR	346,554	MNCN	3,678
BUMI	201,176	DEWA	295,479	BMRI	2,966
ADRO	168,452	LPKR	284,601	PGAS	2,929
PGAS	152,396	TRAM	267,038	APIC	2,836
TLKM	138,243	BKSL	259,927	KIJA	2,638
TRAM	110,475	ELTY	256,938	INDF	2,601
LPKR	103,999	SIPD	231,582	BBRI	2,536

Code	Last	Ytd Chg(%)	H-5 Chg (%)	Rekomendasi	STO	RSI	MACD	Bollinger Band		Support			Resistance			H-5	
								Top	Bottom	1	2	3	1	2	3	Highest	Lowest
AALI	22,200	-17.16	2.07	StrongSell	84.0	49.9	(172.6)	22,900	21,500	21,950	21,700	21,250	22,650	23,100	23,350	22,850	21,150
ACES	3,200	12.28	-3.76	OverBought	61.1	45.4	11.4	3,400	3,200	3,175	3,150	3,075	3,275	3,350	3,375	3,350	3,200
ADRO	2,050	-23.36	-2.38	TradingBuy	31.8	35.6	(115.6)	2,100	2,000	2,025	2,000	1,950	2,100	2,150	2,175	2,175	1,980
AISA	740	-5.13	0.00	Trading	40.0	50.6	3.9	765	740	730	715	700	760	775	790	790	730
ANTM	1,940	-21.62	2.65	Trading	58.6	47.9	(22.2)	1,980	1,870	1,930	1,910	1,890	1,970	1,990	2,010	1,970	1,870
ASII	71,000	30.51	5.34	StrongSell	92.3	57.0	138.5	73,750	65,950	70,400	69,750	69,050	71,750	72,450	73,100	71,800	66,050
BBCA	8,400	30.23	5.00	StrongSell	91.2	59.9	32.2	8,600	8,000	8,250	8,100	8,000	8,500	8,600	8,750	8,450	7,800
BBNI	4,200	10.53	1.82	OverBought	61.1	52.5	7.9	4,275	4,050	4,125	4,050	4,000	4,250	4,300	4,375	4,250	3,950
BBRI	6,950	34.30	6.92	TakeProfit	76.7	60.0	9.6	7,100	6,550	6,900	6,800	6,750	7,050	7,100	7,200	7,000	6,450
BDMN	5,500	0.00	7.84	StrongSell	84.8	52.6	(28.5)	5,800	5,250	5,450	5,400	5,300	5,600	5,700	5,750	5,650	5,050
BISI	1,230	-34.22	0.00	Trading	52.4	43.7	(33.4)	1,260	1,220	1,220	1,210	1,190	1,250	1,270	1,280	1,270	1,200
BMRI	7,200	11.63	4.35	OverBought	76.9	50.8	(140.1)	7,350	6,750	7,100	7,000	6,900	7,300	7,400	7,500	7,250	6,700
BSDE	1,000	13.64	-3.85	Spec.Buy	18.2	50.0	10.7	1,040	980	1,000	995	990	1,010	1,015	1,020	1,070	990
BTEL	375	59.57	4.17	OverBought	60.0	57.9	6.6	382	370	369	362	359	379	382	389	395	345
BUMI	2,725	-12.80	7.92	StrongSell	82.8	48.4	(82.7)	2,850	2,475	2,675	2,625	2,575	2,775	2,825	2,875	2,750	2,475
BWPT	1,210	-7.63	0.83	StrongSell	83.3	52.9	3.9	1,230	1,200	1,200	1,190	1,180	1,220	1,230	1,240	1,220	1,180
ELTY	145	-9.94	1.40	Trading	56.7	44.3	(3.3)	149	141	143	141	139	147	149	151	150	139
EXCL	5,600	6.67	15.46	StrongSell	83.7	56.7	(94.6)	5,900	5,100	5,500	5,400	5,300	5,700	5,800	5,900	5,650	4,800
GGRM	59,350	44.58	9.60	StrongSell	89.8	70.7	1,461.0	61,250	54,450	58,900	58,450	57,900	59,900	60,450	60,900	60,000	53,850
HEXA	8,300	14.48	5.06	TakeProfit	65.2	62.0	153.2	8,700	7,950	8,200	8,100	7,850	8,550	8,800	8,900	8,750	7,850
HRUM	8,800	-6.88	10.00	StrongSell	91.8	52.0	(308.1)	9,550	7,450	8,650	8,500	8,350	8,950	9,100	9,250	8,950	7,500
INCO	4,000	-19.60	14.29	StrongSell	93.1	54.4	(85.9)	4,175	3,600	3,950	3,875	3,825	4,075	4,125	4,200	4,050	3,450
INDF	5,950	20.20	-4.03	OverSold	24.4	43.2	(32.3)	6,100	5,900	5,800	5,650	5,550	6,050	6,150	6,300	6,600	5,750
INDY	3,350	-34.31	5.51	StrongSell	80.0	49.7	(83.0)	3,500	3,100	3,300	3,250	3,175	3,425	3,500	3,550	3,425	3,075
INTP	15,600	-2.80	5.76	StrongSell	84.3	52.7	(40.6)	16,100	15,200	15,500	15,350	15,150	15,850	16,050	16,200	15,950	14,500
ISAT	5,800	6.42	8.41	StrongSell	82.2	57.0	78.5	6,350	5,250	5,650	5,500	5,300	6,000	6,200	6,350	6,050	5,250
ITMG	46,000	-15.29	6.36	StrongSell	90.0	53.4	(606.4)	48,350	42,050	45,100	44,200	43,250	46,950	47,900	48,800	47,000	42,200
JSMR	4,200	18.31	4.35	StrongSell	83.8	67.0	88.5	4,350	4,025	4,200	4,175	4,175	4,225	4,225	4,250	4,275	3,950
KLBF	3,600	8.27	5.88	StrongSell	85.7	60.2	32.0	3,700	3,450	3,550	3,500	3,450	3,650	3,700	3,750	3,650	3,375
LSIP	2,325	-8.46	-3.13	TradingBuy	16.7	46.7	1.0	2,400	2,300	2,300	2,275	2,225	2,375	2,425	2,450	2,450	2,300
MAPI	4,725	70.27	12.50	TakeProfit	92.5	64.4	33.0	4,925	4,100	4,625	4,500	4,450	4,800	4,850	4,975	4,725	4,150
PGAS	2,925	-34.64	-2.50	Trading	47.3	30.8	(227.0)	3,050	2,725	2,900	2,850	2,825	2,975	3,000	3,050	3,125	2,650
PTBA	19,800	-17.33	2.59	StrongSell	83.1	51.3	(252.2)	20,100	18,950	19,600	19,400	19,200	20,000	20,200	20,400	19,950	18,500
RALS	770	-10.47	-2.53	Trading Sell	44.4	44.4	(7.2)	785	765	20,870	20,870	20,870	20,870	20,870	20,870	790	760
SGRO	3,500	7.69	1.45	Trading	53.8	49.8	(16.8)	3,550	3,450	3,500	3,500	3,475	3,525	3,550	3,550	3,550	3,425
SMCB	2,100	-5.62	9.38	StrongSell	89.2	58.7	(19.5)	2,175	1,900	2,050	2,000	1,950	2,150	2,200	2,250	2,125	1,910
SMGR	9,250	-6.09	1.65	OverBought	66.7	50.9	(48.4)	9,450	9,100	9,200	9,100	9,000	9,400	9,500	9,600	9,450	8,850
SMRA	1,280	18.52	6.67	StrongSell	82.1	59.0	15.3	1,330	1,220	1,280	1,270	1,260	1,300	1,310	1,320	1,300	1,200
TINS	2,325	-18.42	3.33	StrongSell	90.0	52.6	(29.6)	2,425	2,175	2,300	2,250	2,225	2,375	2,400	2,450	2,350	2,150
TLKM	7,650	-4.38	6.25	StrongSell	88.0	56.9	75.0	8,100	7,300	7,600	7,500	7,350	7,850	8,000	8,100	7,900	7,000
UNTR	24,900	2.47	3.75	StrongSell	85.4	52.8	(198.0)	25,450	23,700	24,600	24,300	24,000	25,200	25,500	25,800	25,200	23,350
UNVR	17,550	9.35	8.67	StrongSell	86.3	63.6	408.4	17,900	16,650	17,400	17,250	17,100	17,700	17,850	18,000	17,700	15,950

S1 = Support 1      S2 = Support 2      S3 = Support 3  
 R1 = Resisten 1      R2 = Resisten 2      R2 = Resisten 2  
 STO = Stochastic Oscillator  
 RSI = Relative Strength Index  
 MACD = Moving Average Convergence Divergence  
 H-5 = 5 hari sebelumnya

## RESEARCH TEAM

---

<b>Andrian Tanuwijaya</b>	Equity Analyst	(andrian.tanuwijaya@trimegah.com)
<b>Hanel Topada Era Tania</b>	Equity Analyst	(hanel.tania@trimegah.com)
<b>Paul Raymond Widjaja</b>	Equity Analyst	(paul.widjaja@trimegah.com)
<b>T Hedy Arifien</b>	Technical Analyst	(hedy@trimegah.com)
<b>Rovandi</b>	Research Assistant	(rovandi@trimegah.com)

## EQUITY CAPITAL MARKET TEAM

---

<b>Nathanael Benny Prasetyo</b>	Head of Retail ECM	(benny.prasetyo@trimegah.com)
<b>Windra Djulnaily</b>	Pluit, Jakarta	(windra.djulnaily@trimegah.com)
<b>Ariawan Anwar</b>	Artha Graha, Jakarta	(ariawan.anwar@trimegah.com)
<b>Ferry Zabur</b>	Kelapa Gading, Jakarta	(ferry.zabur@trimegah.com)
<b>Wirjawan Joesoef</b>	Mangga Dua, Jakarta	(iwan@trimegah.com)
<b>Lukman Abdul Azis</b>	Kebon Jeruk, Jakarta	(lukman@trimegah.com)
<b>Tutik Suciati</b>	Semarang, Jawa Tengah	(tuty.s@trimegah.com)
<b>Sonny Muljadi</b>	Surabaya, Jawa Timur	(sonny.muljadi@trimegah.com)
<b>Ni Luh Ketut Sri Agustini</b>	Denpasar, Bali	(sri.agustini@trimegah.com)
<b>Philip Fernando Suwandi</b>	Makassar, Sulawesi Selatan	(philip.fs@trimegah.com)
<b>agus.jatmiko</b>	Balikpapan, Kalimantan Timur	(agus.jatmiko@trimegah.com)
<b>Asep Saepudin</b>	Bandung, Jawa Barat	(asep.saepudin@trimegah.com)
<b>Asep Saepudin</b>	Cirebon, Jawa Barat	(asep.saepudin@trimegah.com)
<b>Very Wijaya</b>	Medan, Sumatera Utara	(very.wijaya@trimegah.com)
<b>Tantie Rivi Watie</b>	Pekanbaru, Riau	(tantierw@trimegah.com)
<b>Agus Bambang Suseno</b>	Solo, Jawa Tengah	(agus.suseno@trimegah.com)
<b>Agus Bambang Suseno</b>	Yogyakarta, Jawa Tengah	(agus.suseno@trimegah.com)
<b>Donny Kristanto Setiadi</b>	Palembang, Sumatra Selatan	(donny.kristanto@trimegah.com)
<b>Sonny Muljadi</b>	Malang, Jawa Timur	(sonny.muljadi@trimegah.com)

### **PT Trimegah Securities Tbk**

18<sup>th</sup> Fl, Artha Graha Building  
Jl. Jend. Sudirman Kav. 52-53  
Jakarta 12190, INDONESIA

Tel : (6221) 2924 9088 Fax : (6221) 2924 9163

### **DISCLAIMER**

This report has been prepared by PT Trimegah Securities Tbk on behalf of itself and its affiliated companies and is provided for information purposes only. Under no circumstances is it to be used or considered as an offer to sell, or a solicitation of any offer to buy. This report has been produced independently and the forecasts, opinions and expectations contained herein are entirely those of Trimegah Securities.

While all reasonable care has been taken to ensure that information contained herein is not untrue or misleading at the time of publication, Trimegah Securities makes no representation as to its accuracy or completeness and it should not be relied upon as such. This report is provided solely for the information of clients of Trimegah Securities who are expected to make their own investment decisions without reliance on this report. Neither Trimegah Securities nor any officer or employee of Trimegah Securities accept any liability whatsoever for any direct or consequential loss arising from any use of this report or its contents. Trimegah Securities and/or persons connected with it may have acted upon or used the information herein contained, or the research or analysis on which it is based, before publication. Trimegah Securities may in future participate in an offering of the company's equity securities.