

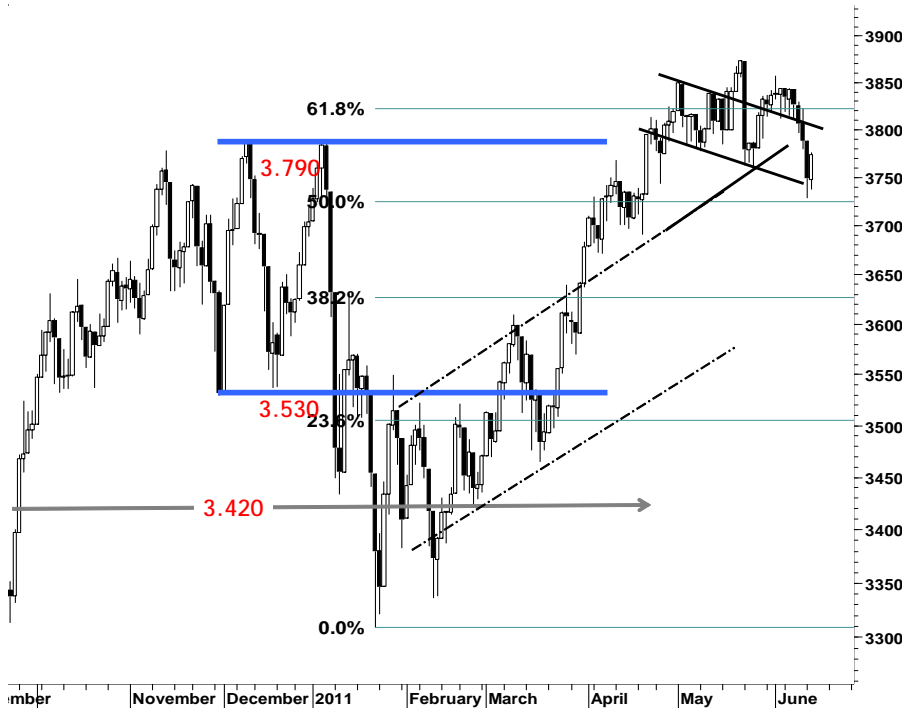
IHSG

3.773,3

24,5

0,65%

Ulisan Pasar

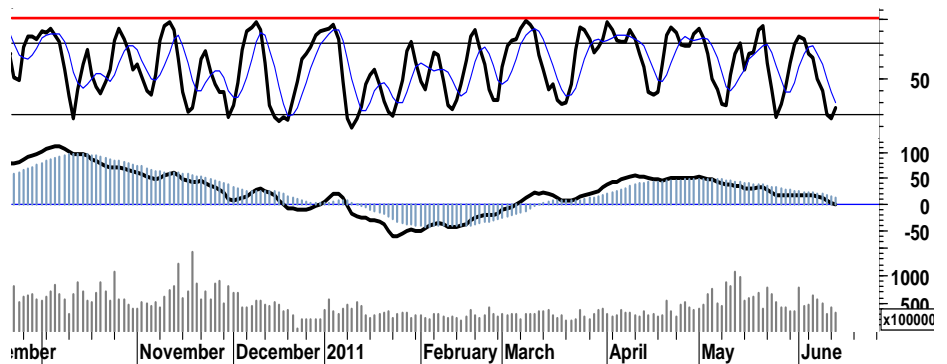


Akumulasi pembelian sejumlah saham unggulan maupun saham favorit berkapitalisasi besar, berhasil mendorong IHSG menguat 25point dengan ditutup di level harga 3.773. Pergerakan mayoritas indeks bursa regional yang positif, juga merupakan salah satu katalis yang turut membawa IHSG memasuki zona hijau perdagangan. Sebagaimana tercermin adanya signal positif serta indikasi golden cross pada stochastic oscillator.

Ditengah lesunya aktifitas perdagangan kemarin, proses penyelesaian tender offer saham BRAU oleh Vallar sebesar Rp1,8triliun, mendorong penguatan 0,65% IHSG dan bergerak menembus resistensi 3.750.

Adanya indikasi signal goldencross maka terbuka peluang bagi para pelaku pasar untuk memanfaatkan momentum, dimana IHSG memiliki ruang untuk melanjutkan penguatannya pada perdagangan hari ini serta menguji resistensi harga berikut pada level 3.800.

Kami perkirakan IHSG pada perdagangan hari ini, akan mencoba bergerak positif dalam interval harga 3.760-3.815.



S1	S2	R1	R2
3,750	3,725	3,785	3,800

Saham Pilihan

Saham	Harga (Rp)	Rekomendasi	Stochastic	RSI	BB Top	BB Bottom	S1	S2	R1	R2
ADRO	2,425	OverSold	35.71	56.29	2,475	2,375	2,375	2,325	2,475	2,525
ASII	57,350	OverSold	20.00	44.62	59,700	55,250	56,450	55,550	58,250	59,150
BBNI	3,700	Accumulate	25.00	36.56	3,800	3,675	3,675	3,650	3,750	3,775
BBRI	6,300	OverSold	31.25	49.24	6,400	6,200	6,250	6,150	6,450	6,550
KLBF	3,275	StrongBuy	13.64	37.04	3,400	3,200	3,250	3,225	3,325	3,350
LSIP	2,350	OverSold	35.71	44.89	2,400	2,325	2,325	2,275	2,425	2,475

ADRO

2,425

OverSold



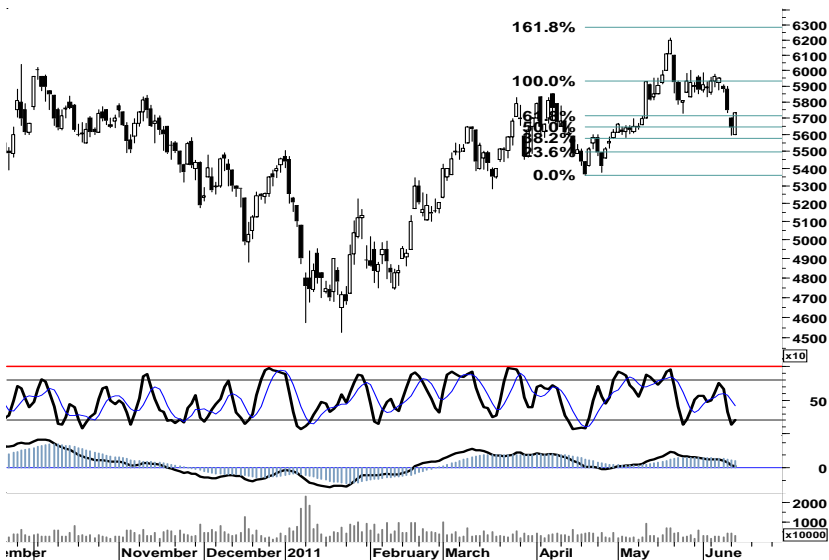
Secara umum ADRO berada dalam kondisi Bulls. Dimana signal positif beberapa leading indicator yang ada, membuka peluang bagi ADRO untuk melanjutkan penguatan serta melakukan penetrasi resistensi 2.475.

S1	S2	R1	R2
2,375	2,325	2,475	2,525

ASII

57,350

OverSold



Setelah tergerus cukup dalam, terutama pada dua hari perdagangan terakhir. Penetrasi Resistensi celah harga 57.350, diharapkan mampu mendorong ASII melanjutkan penguatan menguji resistensi berikut pada level 58.250.

S1	S2	R1	R2
56,450	55,550	58,250	59,150

BBNI

3,700

Accumulate



Ditutup di area pivot support 3.700-3.750, BBNI memiliki ruang untuk bergerak menguji resistensi 3.825 dengan memperketat stoploss harga di level 3.600.

S1	S2	R1	R2
3,675	3,650	3,750	3,775

BBRI

6,300

OverSold



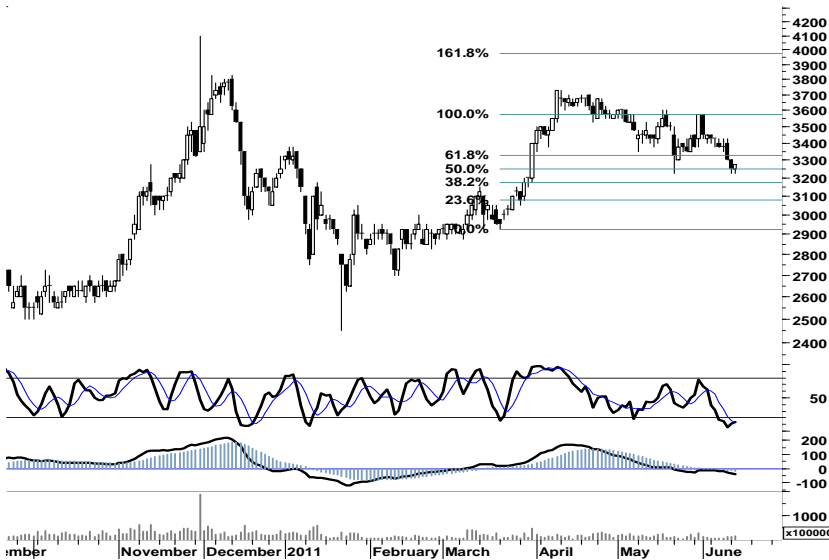
Indikasi golden cross pada area oversold, diharapkan mampu mendorong lanjutan penguatan BBRI menguji resistensi 6.450.

S1	S2	R1	R2
6,250	6,150	6,450	6,550

KLBF

3,275

StrongBuy



Indikasi signal positif serta probabilitas terciptanya golden-cross pada area oversold, membuka peluang bagi KLBF untuk kembali bergerak dalam zona hijau.

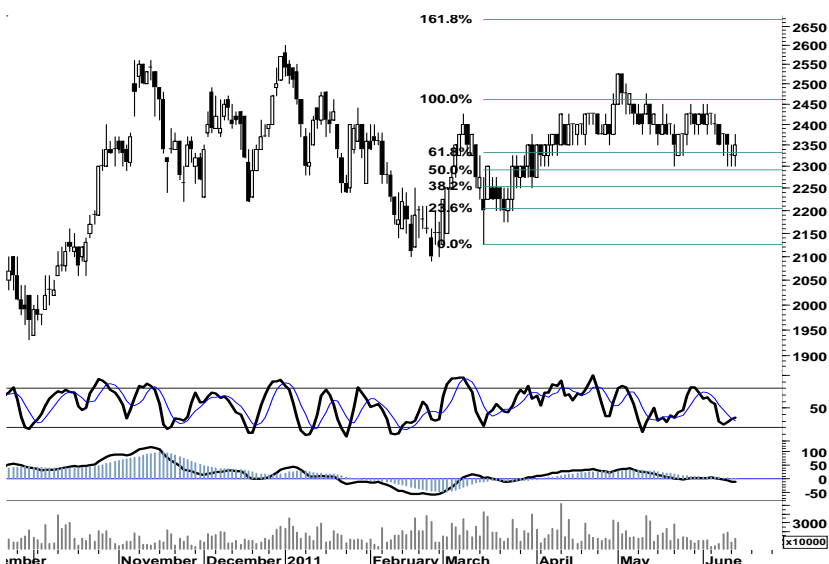
KLBF berpotensi untuk bergerak positif, dalam rentang harga 3250-3325.

S1	S2	R1	R2
3,250	3,225	3,325	3,350

LSIP

2,350

OverSold



Indikasi signal golden-cross diharapkan mampu mendorong LSIP melakukan penetrasi resistensi 2.375

S1	S2	R1	R2
2,325	2,275	2,425	2,475

TRADE DATA

JCI (IHSG) 3,773.3 24.5 0.65%

YTD (Rp)	1.9%	Volume (m) :	5,189
YTD (USD)	7.2%	Nilai (Rpbn) :	3,879
Moving Avg 20day	3,816	Mkt Cap (Rpbn) :	3,388
Moving Avg 50day	3,789	Market P/E (x) :	16.2
Moving Avg 200day	3,592	Market Div. Yield (%) :	2.4

Indonesia & Sectors		+/-	(%)	YTD (%)
MSCI Indonesia	4,648.4	27.1	0.59	2.24
JII	519.3	3.4	0.65	-2.55
LQ45	667.7	4.5	0.68	0.96
JAKFIN Index	489.3	2.4	0.00	4.84
JAKINFR Index	766.9	-1.5	-0.00	-6.39
JAKMINE Index	3,247.2	15.0	0.00	-0.82
JAKCONS Index	1,127.3	20.9	0.02	2.98
JAKTRAD Index	509.2	3.2	0.01	7.41
JAKMIND Index	1,044.1	15.0	0.01	7.97
JAKBIND Index	393.1	1.7	0.00	1.52
JAKPROP Index	205.3	-0.0	-0.00	1.10
JAKAGRI Index	2,336.3	31.0	0.01	2.27

Commodities +/- (%) YTD (%)

CRB Index	347.01	2.4	0.71	4.27
Oil & Gas				
Crude Oil	99.37	2.1	2.13	8.74
Natural Gas	4.58	-0.1	-1.40	4.00
COAL (Rotterdam)	126.35	0.1	0.08	-3.84
COAL (Amsterdam)	126.45	0.9	0.72	0.40
COAL (Australia,wk)	119.20	0.0	0.00	-2.61
Industrial Metals				
Aluminium	2,610.5	36.8	1.43	6.15
Nickel	22,315	40	0.18	-9.84
Tin	25,650	850	3.43	-4.65
Precious Metal				
Gold	1,524.40	8.8	0.58	7.25
Silver	35.41	0.7	1.94	14.56
Soft Commodities				
CPO (Malaysia)	3,273.00	-8.0	-0.24	-14.18
CPO (Netherlands)	1,142.50	5.0	0.44	-11.09
Rubber	5,163.37	-2.4	-0.05	3.39
Corn	755.50	-27.0	-3.45	20.11
Wheat	731.25	-11.8	-1.58	-7.93
Soybeans	1,368.00	-14.8	-1.07	-1.85
Rice (Indonesia)	6,850.00	0.0	0.00	-3.52

Winners

Stock	Price	(%)	Stock	Price	(%)
SMMA	2,600	10.64	ACES	2,900	-3.33
SMAR	7,000	4.48	PWON	940	-3.09
GGRM	45,450	3.89	MEDC	2,400	-3.03
INDF	5,300	1.92	IMAS	8,050	-3.01
ASII	57,350	1.68	MPPA	1,310	-2.24
INTP	16,750	1.52	TLKM	7,300	-2.01
UNVR	14,800	1.37	PNBN	980	-2.00
ADRO	2,425	1.04	TPIA	3,925	-1.88
BBRI	6,300	0.80	BSDE	870	-1.14
BMRI	6,950	0.72	BDMN	6,000	-0.83

Losers

Stock	Price	(%)	Stock	Price	(%)
ACES	2,900	-3.33	ACES	2,900	-3.33
PWON	940	-3.09	PWON	940	-3.09
MEDC	2,400	-3.03	MEDC	2,400	-3.03
IMAS	8,050	-3.01	IMAS	8,050	-3.01
MPPA	1,310	-2.24	MPPA	1,310	-2.24
TLKM	7,300	-2.01	TLKM	7,300	-2.01
PNBN	980	-2.00	PNBN	980	-2.00
TPIA	3,925	-1.88	TPIA	3,925	-1.88
BSDE	870	-1.14	BSDE	870	-1.14
BDMN	6,000	-0.83	BDMN	6,000	-0.83

Regional Indices +/- (%) YTD (%)

MXWO	MSCI World	1,305.8	17.3	1.35	2.01
SPX	S&P 500	1,287.9	16.0	1.26	2.40
US					
Dow Jones Industrial		12,076.1	123.1	1.03	4.31
Nasdaq	US	2,678.7	39.0	1.48	0.97
Europe					
EURO 50	Europe	270.8	2.1	0.79	-1.81
FTSE	London	5,803.1	29.7	0.51	-1.64
DAX	Germany	7,204.8	119.7	1.69	4.20
CAC	France	3,864.6	57.0	1.50	1.57
SMI	Swiss	6,255.7	58.4	0.94	-2.80
BRIC					
BOVESPA	Brazil	62,204.8	181.9	0.29	-10.24
MICEX	Russia	1,681.7	-2.3	-0.14	-0.38
SENSEX	India	18,308.7	42.6	0.23	-10.73
NIFTY	India	5,500.5	17.7	0.32	-10.33
SHCOMP	China	2,730.0	29.7	1.10	-2.78
SZCOMP	China	1,128.4	17.5	1.58	-12.58

Developed ASIA

Nikkei	Japan	9,547.8	99.6	1.05	-6.66
TPX	Japan	822.9	10.6	1.31	-8.45
HIS	Hong kong	22,496.0	-12.1	-0.05	-2.34
KOSPI	S.Korea	2,076.8	28.1	1.37	1.26
TAIEX	Taiwan	8,829.2	116.3	1.33	-1.60
FSSTI	Singapore	3,057.4	-1.7	-0.05	-4.16

ASEAN

SET	Thailand	1,034.9	19.4	1.91	0.21
PCOMP	Philippines	4,140.3	-31.3	-0.75	-1.45
KLCI	Malaysia	1,548.5	2.6	0.17	1.95
VNINDEX	Vietnam	441.5	-1.1	-0.26	-8.90

Currency +/- (%) YTD (%)

EURUSD	Euro	1.444	0.003	0.19	7.89
GBPUSD	United Kingdom	1.637	-0.001	-0.04	4.86
USDCHE	Switzerland	0.845	0.008	0.98	-9.60
USDCAD	Canada	0.968	-0.008	-0.81	-2.99
AUDUSD	Australia	1.069	0.008	0.78	4.42
NZDUSD	New Zealand	0.818	0.003	0.32	4.86
USDJPY	Japan	80.5	0.250	0.31	-0.78
USDCNY	China	6.480	-0.003	-0.05	-1.92
USDHKD	Hongkong	7.785	-0.001	-0.02	0.15
USDSGD	Singapore	1.231	-0.006	-0.46	-4.12
Rupiah	Indonesia	8,534.0	-9.000	-0.11	-5.14

Value (Rpbn) Volume (Lot) Freq (x)

TLKM	195,149	DEWA	562,140	ELSA	11,662
BUMI	182,771	BNBR	512,295	GDST	5,754
ASII	175,166	ENRG	424,424	DART	3,438
BBRI	165,934	ELTY	323,372	IPOL	3,437
BMRI	162,361	GDST	150,763	JPRS	3,240
ADRO	116,311	TRAM	148,044	BUVA	2,397
PGAS	59,183	BRMS	139,476	MNCN	2,233
BRMS	53,646	MIRA	126,062	BULL	2,213
BBNI	47,727	ELSA	125,363	BUMI	2,065
HRUM	43,484	BULL	124,521	SPMA	2,014

Code	Last	Ytd Chg(%)	H-5 Chg (%)	Rekomendasi	STO	RSI	MACD	Bollinger Band		Support			Resistance			H-5	
								Top	Bottom	1	2	3	1	2	3	Highest	Lowest
AALI	23,050	-13.99	-1.91	OverSold	30.9	46.8	(72.5)	23,450	22,450	22,850	22,600	22,500	23,200	23,300	23,550	23,600	22,500
ACES	2,900	1.75	3.57	TakeProfit	72.3	63.1	82.8	3,075	2,900	2,875	2,850	2,775	2,975	3,050	3,075	3,075	2,700
ADRO	2,425	-9.35	-2.02	OverSold	35.7	56.3	33.6	2,475	2,375	2,375	2,325	2,300	2,450	2,475	2,525	2,475	2,350
AKRA	1,800	5.88	1.12	TakeProfit	66.7	66.0	46.8	1,820	1,790	1,790	1,780	1,760	1,820	1,840	1,850	1,820	1,770
ANTM	2,125	-14.14	0.00	OverBought	75.0	32.8	(30.5)	2,125	2,125	2,100	2,075	2,050	2,150	2,175	2,200	2,150	2,075
ASII	57,350	5.42	-3.78	OverSold	20.0	44.6	57.1	59,700	55,250	56,450	55,550	55,100	57,800	58,250	59,150	59,750	55,950
BBCA	7,000	8.53	-1.41	StrongBuy	-	43.2	(58.4)	7,000	7,000	7,000	6,950	6,900	7,100	7,150	7,200	7,100	7,000
BBNI	3,700	-2.63	-3.27	Accumulate	25.0	36.6	(55.6)	3,800	3,675	3,675	3,650	3,625	3,725	3,750	3,775	3,825	3,650
BBRI	6,300	21.74	-1.56	OverSold	31.3	49.2	(1.8)	6,400	6,200	6,250	6,150	6,100	6,400	6,450	6,550	6,450	6,150
BBTN	1,630	-2.40	-1.81	OverSold	30.0	45.2	(14.3)	1,680	1,590	1,610	1,590	1,580	1,640	1,650	1,670	1,670	1,590
BDMN	6,000	9.09	0.00	Trading	53.8	44.6	(30.3)	6,150	6,000	5,950	5,900	5,800	6,100	6,200	6,250	6,100	5,900
BISI	1,400	-25.13	-10.26	StrongBuy	9.4	21.2	(55.6)	1,540	1,330	1,400	1,390	1,390	1,410	1,410	1,420	1,580	1,380
BMRI	6,950	7.75	-1.42	Trading	45.5	44.8	(29.1)	7,050	6,900	6,900	6,850	6,800	7,000	7,050	7,100	7,050	6,850
BSDE	870	-1.14	-4.40	Accumulate	26.7	39.4	(3.8)	920	860	860	845	830	890	905	920	920	860
BTEL	355	51.06	-2.74	Trading	50.0	40.2	(6.4)	362	342	349	342	339	359	362	369	370	330
BUMI	3,325	6.40	-3.62	OverSold	33.3	43.9	(14.2)	3,475	3,275	3,300	3,250	3,225	3,375	3,400	3,450	3,475	3,275
CTRA	430	22.86	-1.15	OverSold	38.5	57.0	9.2	447	422	425	420	415	435	440	445	460	415
ELTY	154	-4.35	-6.67	StrongBuy	14.0	44.3	1.1	164	150	152	150	148	156	158	160	168	152
EXCL	6,000	14.29	0.84	OverBought	64.7	45.2	(105.6)	6,100	5,750	5,950	5,850	5,800	6,100	6,150	6,250	6,050	5,700
GGRM	45,450	10.72	0.44	Trading	54.1	62.4	787.7	46,300	43,650	44,300	43,100	42,450	46,150	46,800	48,000	45,600	43,600
HEXA	6,350	-12.41	-0.78	OverSold	31.3	51.4	45.9	6,400	6,200	6,250	6,150	6,050	6,450	6,550	6,650	6,500	6,150
INCO	4,575	-8.04	-2.14	Accumulate	27.3	31.3	(65.2)	4,700	4,525	4,525	4,475	4,425	4,625	4,675	4,725	4,725	4,500
INDF	5,300	7.07	-2.75	OverSold	20.0	44.5	(67.0)	5,350	5,150	5,250	5,150	5,100	5,400	5,450	5,550	5,500	5,150
INDY	3,975	-22.06	-3.64	Accumulate	25.0	38.8	(22.7)	4,125	3,900	3,950	3,925	3,900	4,000	4,025	4,050	4,175	3,900
INTP	16,750	4.36	-4.01	StrongBuy	17.2	47.9	(31.2)	17,000	16,400	16,500	16,250	16,100	16,900	17,050	17,300	17,550	16,350
ISAT	5,100	-6.42	-0.97	Accumulate	37.5	37.6	(44.2)	5,200	5,050	5,100	5,100	5,050	5,150	5,200	5,200	5,200	5,050
ITMG	46,250	-14.83	-2.12	OverSold	28.4	41.8	(203.6)	47,550	45,450	45,900	45,550	45,350	46,450	46,650	47,000	47,500	45,500
JSMR	3,425	-3.52	0.00	OverSold	35.7	52.2	(8.8)	3,450	3,300	3,375	3,300	3,275	3,475	3,500	3,575	3,450	3,325
KLBF	3,275	-1.50	-4.38	StrongBuy	13.6	37.0	(57.1)	3,400	3,200	3,250	3,225	3,200	3,300	3,325	3,350	3,425	3,225
LSIP	2,350	-7.48	-2.08	OverSold	35.7	44.9	(12.8)	2,400	2,325	2,325	2,275	2,250	2,400	2,425	2,475	2,425	2,300
MYOR	12,750	18.06	-1.16	Trading	41.4	59.5	315.8	13,200	12,700	12,550	12,300	12,100	13,000	13,200	13,450	13,200	12,500
PGAS	3,975	-11.17	-0.62	Trading	46.7	44.9	(20.1)	4,000	3,950	3,950	3,925	3,900	4,000	4,025	4,050	4,000	3,900
PTBA	21,000	-12.32	-0.71	Accumulate	30.6	40.0	(202.5)	21,050	20,900	20,900	20,750	20,700	21,100	21,150	21,300	21,400	20,750
RALS	780	-9.30	-7.14	Trading Sell	23.8	47.6	9.0	820	760	20,870	20,870	20,870	20,870	20,870	20,870	840	760
SGRO	3,375	3.85	-1.46	OverSold	31.3	47.2	10.1	3,475	3,350	3,350	3,325	3,300	3,400	3,425	3,450	3,475	3,325
SMCB	2,150	-3.37	-3.37	OverSold	30.0	50.2	0.1	2,200	2,100	2,125	2,075	2,050	2,200	2,225	2,275	2,250	2,050
SMGR	9,200	-6.60	-2.13	StrongBuy	19.0	32.0	(73.8)	9,300	9,150	9,150	9,100	9,050	9,250	9,300	9,350	9,500	9,150
SMRA	1,130	4.63	-5.04	OverSold	27.3	49.1	(3.6)	1,160	1,090	1,110	1,090	1,080	1,140	1,150	1,170	1,200	1,080
TINS	2,525	-11.40	-2.88	Accumulate	30.8	32.3	(53.2)	2,600	2,475	2,500	2,475	2,450	2,550	2,575	2,600	2,600	2,475
TLKM	7,300	-8.75	-2.67	Accumulate	31.3	37.4	(29.6)	7,550	7,300	7,200	7,100	7,050	7,350	7,400	7,500	7,550	7,150
UNTR	22,850	-5.97	-1.30	OverSold	38.6	55.1	173.9	23,200	22,550	22,750	22,650	22,550	22,950	23,050	23,150	23,250	22,500
UNVR	14,800	-7.79	-1.00	OverSold	21.1	47.1	(69.5)	14,900	14,600	14,650	14,500	14,400	14,900	15,000	15,150	14,950	14,600

S1 = Support 1 S2 = Support 2 S3 = Support 3
 R1 = Resisten 1 R2 = Resisten 2 R2 = Resisten 2
 STO = Stochastic Oscillator
 RSI = Relative Strength Index
 MACD = Moving Average Convergence Divergence
 H-5 = 5 hari sebelumnya

RESEARCH TEAM

Andrian Tanuwijaya	Equity Analyst	(andrian.tanuwijaya@trimegah.com)
Hanel Topada Era Tania	Equity Analyst	(hanel.tania@trimegah.com)
Paul Raymond Widjaja	Equity Analyst	(paul.widjaja@trimegah.com)
T Hedy Arifien	Technical Analyst	(hedy@trimegah.com)
Rovandi	Research Assistant	(rovandi@trimegah.com)

EQUITY CAPITAL MARKET TEAM

Nathanael Benny Prasetyo	Head of Retail ECM	(benny.prasetyo@trimegah.com)
Windra Djulnaily	Pluit, Jakarta	(windra.djulnaily@trimegah.com)
Ariawan Anwar	Artha Graha, Jakarta	(ariawan.anwar@trimegah.com)
Ferry Zabur	Kelapa Gading, Jakarta	(ferry.zabur@trimegah.com)
Wirjawan Joesoef	Mangga Dua, Jakarta	(iwan@trimegah.com)
Lukman Abdul Azis	Kebon Jeruk, Jakarta	(lukman@trimegah.com)
Tutik Suciati	Semarang, Jawa Tengah	(tuty.s@trimegah.com)
Sonny Muljadi	Surabaya, Jawa Timur	(sonny.muljadi@trimegah.com)
Ni Luh Ketut Sri Agustini	Denpasar, Bali	(sri.agustini@trimegah.com)
Philip Fernando Suwandi	Makassar, Sulawesi Selatan	(philip.fs@trimegah.com)
agus.jatmiko	Balikpapan, Kalimantan Timur	(agus.jatmiko@trimegah.com)
Asep Saepudin	Bandung, Jawa Barat	(asep.saepudin@trimegah.com)
Asep Saepudin	Cirebon, Jawa Barat	(asep.saepudin@trimegah.com)
Very Wijaya	Medan, Sumatera Utara	(very.wijaya@trimegah.com)
Tantie Rivi Watie	Pekanbaru, Riau	(tantierw@trimegah.com)
Agus Bambang Suseno	Solo, Jawa Tengah	(agus.suseno@trimegah.com)
Agus Bambang Suseno	Yogyakarta, Jawa Tengah	(agus.suseno@trimegah.com)
Donny Kristanto Setiadi	Palembang, Sumatra Selatan	(donny.kristanto@trimegah.com)
Sonny Muljadi	Malang, Jawa Timur	(sonny.muljadi@trimegah.com)

PT Trimegah Securities Tbk
18th Fl, Artha Graha Building
Jl. Jend. Sudirman Kav. 52-53
Jakarta 12190, INDONESIA
Tel : (6221) 2924 9088 Fax : (6221) 2924 9163

DISCLAIMER

This report has been prepared by PT Trimegah Securities Tbk on behalf of itself and its affiliated companies and is provided for information purposes only. Under no circumstances is it to be used or considered as an offer to sell, or a solicitation of any offer to buy. This report has been produced independently and the forecasts, opinions and expectations contained herein are entirely those of Trimegah Securities.

While all reasonable care has been taken to ensure that information contained herein is not untrue or misleading at the time of publication, Trimegah Securities makes no representation as to its accuracy or completeness and it should not be relied upon as such. This report is provided solely for the information of clients of Trimegah Securities who are expected to make their own investment decisions without reliance on this report. Neither Trimegah Securities nor any officer or employee of Trimegah Securities accept any liability whatsoever for any direct or consequential loss arising from any use of this report or its contents. Trimegah Securities and/or persons connected with it may have acted upon or used the information herein contained, or the research or analysis on which it is based, before publication. Trimegah Securities may in future participate in an offering of the company's equity securities.