

IHSG

3.348,7 -200,3 -5,64%

Ulisan Pasar



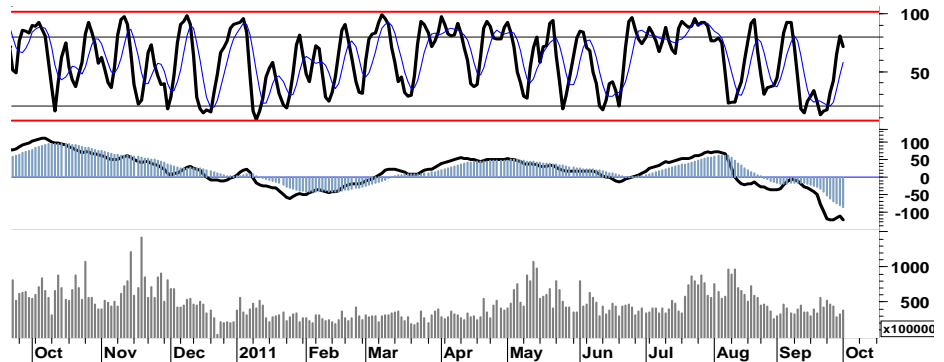
Terpuruk 200 poin atau setara dengan melemah 5,6%, IHSG merupakan salah satu indeks perdagangan di Asia yang mengalami tekanan jual yang paling dalam. Sementara indeks pada bursa-bursa utama Eropa mengawali perdagangan di bulan Oktober ini dengan bergerak variatif tertahan pada teritori negatif meskipun mencoba untuk kembali menguat di menjelang akhir sesi perdagangan DAX -2,3%, CAC -1,9%, sementara indeks pada bursa di Amerika cenderung mengalami tekanan sejak awal sesi perdagangan dibuka DJI -2,4%, Nasdaq -3,2%, dan S&P500 2,9%.

Sejumlah saham dengan kapitalisasi besar dan termasuk dalam kategori saham unggulan, seperti ASII, BBNI, BBRI, BMRI, UNTR merupakan sedereta emiten yang kontributor terhadap pelemahan IHSG pada perdagangan kemarin. Yang juga ditandai dengan tercatatnya nilai penjualan bersih sebesar Rp531,96miliar, yang dilakukan oleh para pelaku asing.

Untuk dapat kembali pada area konsolidasi positif 3.490-3.610, support 3.310 merupakan batas akhir pertahanan bagi tekanan pelemahan yang masih akan membayangi pergerakan IHSG pada perdagangan hari ini.

Melemahnya signal penguatan pada fast moving oscillator ataupun leading indicator yang ada, maka jadikan support 3.310 sebagai level stop-loss harga. Seiring terbukanya potensi tekanan lanjutan yang akan menyeret IHSG menguji kekuatan support tersebut, dan menciptakan level harga terendah baru periode 2011.

Kami perkirakan, IHSG pada perdagangan hari ini akan mencoba bergerak dalam interval harga 3.250-3.360.



S1	S2	R1	R2
3,270	3,190	3,490	3,630

## Saham Pilihan

Saham	Harga (Rp)	Rekomendasi	Stochastic	RSI	BB Top	BB Bottom	S1	S2	R1	R2
ADRO	1,610	OverBought	71.59	30.75	1,780	1,580	1,590	1,560	1,720	1,750
BISI	950	Trading	48.84	25.56	1,055	930	930	910	990	1,010
GGRM	52,500	Trading	67.85	46.11	53,400	50,450	51,250	50,000	54,600	55,850
HRUM	6,650	Trading	55.00	31.55	7,450	6,550	6,500	6,300	7,100	7,300
MAPI	4,100	Trading	52.63	42.41	4,600	4,025	4,025	3,925	4,275	4,375
SMRA	920	Trading	35.29	25.75	1,065	900	895	870	1,010	1,035

ADRO

1,610

OverBought



Secara umum, tekanan jual masih akan membayangi ADRO pada perdagangan hari ini yang memiliki potensi akan menyeret harga saham tersebut menguji kekuatan basis support 1.530.

Terciptanya celah harga pada level 1.690 - 1.700, merupakan peluang yang mungkin akan dicapai oleh saham tersebut apabila mampu bertahan pada support 1.590.

S1	S2	R1	R2
1,590	1,560	1,720	1,750

BISI

950

Trading



Ditutup pada area pivot support 950, memberikan peluang bagi BISI untuk melakukan swing positif menutup celah harga yang terbuka pada 970 - 1.000 sebelum melanjutkan target support pelemahan di level 910/900.

S1	S2	R1	R2
930	910	990	1,010

GGRM

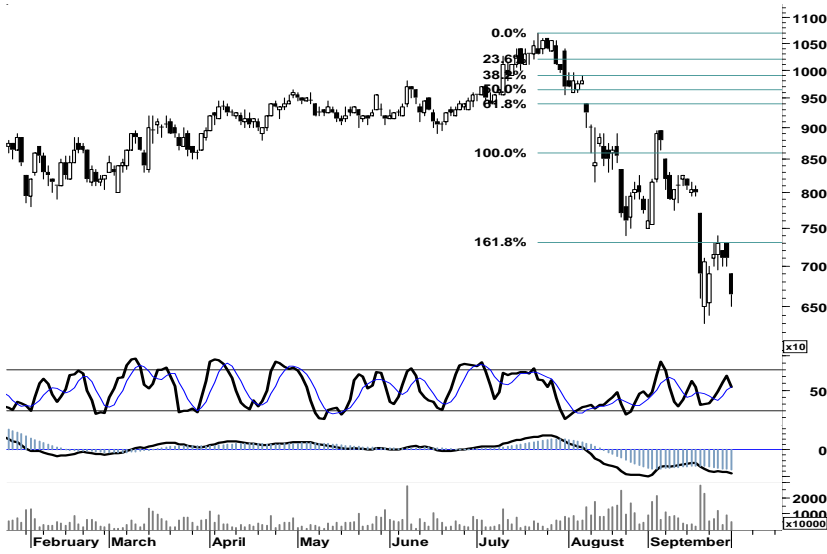
52,500

Trading



Signal negatif pada fast moving oscillator merupakan potensi tekanan menguji kekuatan support 49.750 yang harus diwaspadai, apabila GGRM gagal untuk melanjutkan penguatan menuju target resistensi terdekat di level 55.850.

S1	S2	R1	R2
51,250	50,000	54,600	55,850



Untuk dapat kembali pada teritori positif, support harga 6.300 diharapkan mampu menjadi titik pembalikan arah bagi HRUM untuk menutup celah harga terbuka pada 6.900-7.000.

S1	S2	R1	R2
6,500	6,300	7,100	7,300



Kondisi berimbang pada pivot support, membuka peluang yang sama besarnya bagi MAPI untuk menutup celah harga 4.175 - 4.300.

Waspada pula potensi berlanjutnya tekanan menguji kekuatan support 4.025.

S1	S2	R1	R2
4,025	3,925	4,275	4,375



Terbatasnya ruang pelemahan sebagaimana tercermin pada leading indicator yang ada, membuka peluang bagi SMRA untuk menutup celah harga terbuka di level 980-990.

Waspada potensi penetrasi stop-loss harga pada level 870.

S1	S2	R1	R2
895	870	1,010	1,035

## TRADE DATA

### JCI (IHSG) 3,348.7 -200.3 -5.64%

YTD (Rp)	-9.6%	Volume (m) :	6,334
YTD (USD)	-9.2%	Nilai (Rpbn) :	3,328
Moving Avg 20day	3,691	Mkt Cap (Rpbn) :	3,439
Moving Avg 50day	3,868	Market P/E (x) :	16.2
Moving Avg 200day	3,726	Market Div. Yield (%) :	2.4

### Indonesia & Sectors +/- (%) YTD (%)

MSCI Indonesia	4,103.9	-273.5	-6.25	-9.73
JII	462.0	-30.3	-6.16	-13.31
LQ45	584.2	-38.4	-6.17	-11.67
JAKFIN Index	434.9	-31.7	-0.07	-6.80
JAKINFR Index	666.3	-28.0	-0.04	-18.66
JAKMINE Index	2,338.2	-149.0	-0.06	-28.59
JAKCONS Index	1,173.0	-31.2	-0.03	7.16
JAKTRAD Index	469.6	-23.5	-0.05	-0.95
JAKMIND Index	1,063.1	-80.3	-0.07	9.94
JAKBIND Index	338.9	-23.6	-0.07	-12.50
JAKPROP Index	192.7	-13.2	-0.06	-5.12
JAKAGRI Index	1,869.5	-175.2	-0.09	-18.16

### Commodities +/- (%) YTD (%)

CRB Index	296.38	-1.8	-0.59	-10.94
<b>Oil &amp; Gas</b>				
Crude Oil	77.61	-1.6	-2.01	-15.07
Natural Gas	3.62	-0.0	-1.34	-17.89
COAL (Rotterdam)	120.00	-1.5	-1.19	-8.68
COAL (Amsterdam)	120.00	-2.4	-1.96	-4.72
COAL (Australia,wk)	122.25	-0.3	-0.20	-0.12
<b>Industrial Metals</b>				
Aluminium	2,185.25	55.0	2.58	-11.14
Nickel	19,025	1,425	8.10	-23.13
Tin	20,500	150	0.74	-23.79
<b>Precious Metal</b>				
Gold	1,657.70	37.3	2.30	16.62
Silver	30.80	0.7	2.37	-0.37
<b>Soft Commodities</b>				
CPO (Malaysia)	2,860.00	-68.0	-2.32	-25.01
CPO (Netherlands)	1,000.00	-10.0	-0.99	-22.18
Rubber	3,849.67	-66.8	-1.70	-22.91
Corn	592.50	0.0	0.00	-5.80
Wheat	619.50	10.3	1.68	-22.00
Soybeans	1,177.50	-1.5	-0.13	-15.52
Rice (Indonesia)	7,700.00	0.0	0.00	8.45

### Winners

Stock	Price	(%)	Stock	Price	(%)
SOBI	2,300	6.98	ITMG	35,800	-8.79
VRNA	125	3.31	BMRI	5,750	-8.73
ETWA	400	1.27	BBRI	5,300	-9.40
SQBI	118,000	0.85	ASII	58,950	-7.38
IKAI	146	0.69	CPIN	2,175	-9.38
AIMS	190	0.00	UNTR	20,150	-8.41
AKKU	150	0.00	BBCA	7,350	-4.55
ALFA	2,400	0.00	BBNI	3,425	-8.05
AKSI	100	0.00	INTP	12,700	-9.29
AKPI	1,000	0.00	TLKM	7,400	-2.63

### Losers

Stock	Price	(%)	Stock	Price	(%)
ITMG	35,800	-8.79	BMRI	5,750	-8.73
BMRI	5,750	-8.73	BBRI	5,300	-9.40
BBRI	5,300	-9.40	CPIN	2,175	-9.38
CPIN	2,175	-9.38	UNTR	20,150	-8.41
UNTR	20,150	-8.41	BBCA	7,350	-4.55
BBCA	7,350	-4.55	BBNI	3,425	-8.05
BBNI	3,425	-8.05	INTP	12,700	-9.29
INTP	12,700	-9.29	TLKM	7,400	-2.63
TLKM	7,400	-2.63			

### Regional Indices +/- (%) YTD (%)

MXWO	MSCI World	1,074.8	-29.3	-2.65	-16.04
SPX	S&P 500	1,099.2	-32.2	-2.85	-12.60
<b>US</b>					
Dow Jones Industrial		10,655.3	-258.1	-2.36	-7.97
Nasdaq	US	2,335.8	-79.6	-3.29	-11.95
<b>Europe</b>					
EURO 50	Europe	223.6	-2.6	-1.13	-18.92
FTSE	London	5,075.5	-53.0	-1.03	-13.97
DAX	Germany	5,376.7	-125.3	-2.28	-22.24
CAC	France	2,926.8	-55.1	-1.85	-23.07
SMI	Swiss	5,495.7	-36.1	-0.65	-14.61
<b>BRIC</b>					
BOVESPA	Brazil	50,791.5	-1,532.9	-2.93	-26.71
MICEX	Russia	1,344.7	-21.9	-1.60	-20.34
SENSEX	India	16,151.5	-302.3	-1.84	-21.25
NIFTY	India	4,849.5	-93.8	-1.90	-20.95
SHCOMP	China	2,359.2	0.0	0.00	-15.98
SZCOMP	China	1,004.5	0.0	0.00	-22.18

### Developed ASIA

Nikkei	Japan	8,545.5	-154.8	-1.78	-16.46
TPX	Japan	747.1	-14.1	-1.85	-16.88
HIS	Hong kong	16,822.2	-770.3	-4.38	-26.97
KOSPI	S. Korea	1,769.7	0.0	0.00	-13.72
TAIEX	Taiwan	7,014.0	-211.4	-2.93	-21.83
FSSTI	Singapore	2,621.4	-53.8	-2.01	-17.83

### ASEAN

SET	Thailand	869.3	-46.9	-5.12	-15.83
PCOMP	Philippines	3,865.8	-133.8	-3.35	-7.98
KLCI	Malaysia	1,367.5	-19.6	-1.41	-9.97
VNINDEX	Vietnam	422.1	-5.5	-1.28	-12.90

### Currency +/- (%) YTD (%)

EURUSD	Euro	1.318	-0.021	-1.58	-1.55
GBPUSD	United Kingdom	1.543	-0.015	-0.98	-1.15
USDCHF	Switzerland	0.922	0.013	1.48	-1.45
USDCAD	Canada	1.055	0.004	0.42	5.68
AUDUSD	Australia	0.953	-0.014	-1.40	-6.90
NZDUSD	New Zealand	0.753	-0.009	-1.14	-3.52
USDJPY	Japan	76.6	-0.430	-0.56	-5.54
USDCNY	China	6.360	-0.021	-0.33	-3.74
USDHKD	Hongkong	7.788	0.003	0.03	0.19
USDSGD	Singapore	1.320	0.012	0.93	2.81
Rupiah	Indonesia	8,903.0	-47.000	-0.53	-1.03

### Value

Value (Rpbn)	Volume (Lot)	Freq (x)
ASII 353,741	ENRG 570,881	BUMI 6,385
BUMI 312,602	BNBR 566,098	BBRI 4,691
BBRI 292,552	ASRI 325,104	BMRI 4,627
BMRI 276,831	BUMI 319,079	INDF 3,825
INDF 252,515	ELTY 297,092	ADRO 3,780
ADRO 181,009	DEWA 256,381	ASII 3,382
TLKM 175,864	LPKR 210,675	ANTM 3,347
BBCA 142,638	ADRO 207,186	ASRI 2,768
SMGR 78,510	BHIT 161,481	TLKM 2,413
BBNI 75,759	MYRX 157,352	PGAS 2,412

Code	Last	Ytd Chg(%)	H-5 Chg (%)	Rekomendasi	STO	RSI	MACD	Bollinger Band		Support			Resistance			H-5	
								Top	Bottom	1	2	3	1	2	3	Highest	Lowest
AALI	17,300	-35.45	-7.98	Trading	31.0	21.0	(879.2)	20,300	17,050	16,800	16,300	15,300	18,300	19,300	19,800	20,750	17,300
ACES	3,275	14.91	5.65	StrongSell	87.2	48.3	(10.7)	3,425	3,200	3,150	3,000	2,900	3,400	3,500	3,650	3,350	3,025
ADRO	1,610	-39.81	5.92	OverBought	71.6	30.7	(151.5)	1,780	1,580	1,590	1,560	1,510	1,670	1,720	1,750	1,780	1,430
AISA	620	-20.51	-8.82	Trading	35.0	27.1	(22.6)	705	615	610	595	570	650	675	690	700	620
ANTM	1,410	-43.03	-1.40	Trading	26.9	25.1	(124.7)	1,510	1,390	1,390	1,370	1,320	1,460	1,510	1,530	1,580	1,400
ASII	58,950	8.36	3.42	OverBought	67.2	37.9	(1,962.2)	65,600	57,950	57,500	56,000	53,250	61,750	64,500	66,000	65,600	55,100
BBCA	7,350	13.95	0.00	OverBought	72.5	40.7	(153.1)	7,800	7,300	7,200	7,050	6,900	7,500	7,650	7,800	7,800	7,100
BBNI	3,425	-9.87	0.00	OverBought	79.5	37.7	(141.9)	3,825	3,400	3,325	3,225	3,075	3,575	3,725	3,825	3,750	2,975
BBRI	5,300	2.42	-0.93	Trading	56.9	35.7	(248.0)	6,150	5,250	5,150	5,000	4,700	5,600	5,900	6,050	6,100	5,150
BDMN	4,275	-22.27	-3.93	Trading	47.1	33.0	(189.2)	4,725	4,250	4,150	4,000	3,800	4,500	4,700	4,850	4,700	4,200
BISI	950	-49.20	-5.00	Trading	48.8	25.6	(76.1)	1,055	930	930	910	890	970	990	1,010	1,060	920
BMRI	5,750	-10.85	4.55	OverBought	68.6	39.1	(289.3)	6,650	5,650	5,600	5,450	5,150	6,050	6,350	6,500	6,550	5,300
BSDE	810	-7.95	9.46	OverBought	74.4	38.1	(45.1)	890	785	775	740	695	855	900	935	890	730
BTEL	320	36.17	-3.03	OverBought	76.2	32.3	(6.7)	335	319	312	304	297	327	334	342	335	295
BUMI	1,790	-42.72	-10.50	Trading	21.0	23.0	(216.1)	2,150	1,690	1,740	1,690	1,600	1,880	1,970	2,020	2,175	1,770
BWPT	1,040	-20.61	1.96	OverBought	60.7	31.4	(37.4)	1,080	1,040	1,030	1,020	1,000	1,060	1,080	1,090	1,090	980
ELTY	103	-36.02	-4.63	Trading	42.2	25.8	(10.1)	120	100	98	93	87	109	115	120	121	98
EXCL	4,775	-9.05	3.24	StrongSell	82.8	40.5	(125.0)	5,075	4,750	4,675	4,575	4,450	4,900	5,025	5,125	5,050	4,475
GGRM	52,500	27.89	7.14	Trading	67.8	46.1	(830.1)	53,400	50,450	51,250	50,000	48,950	53,550	54,600	55,850	54,000	47,850
HEXA	7,100	-2.07	8.40	StrongSell	81.6	41.4	(202.7)	7,450	7,050	6,950	6,800	6,650	7,250	7,400	7,550	7,450	5,900
HRUM	6,650	-29.63	-3.62	Trading	55.0	31.5	(456.2)	7,450	6,550	6,500	6,300	6,100	6,900	7,100	7,300	7,400	6,400
INCO	2,800	-43.72	-3.45	Trading	32.4	26.0	(247.1)	3,100	2,775	2,775	2,725	2,650	2,900	2,975	3,025	3,100	2,800
INDF	4,875	-1.52	8.33	StrongSell	85.5	39.9	(328.8)	5,150	4,650	4,825	4,775	4,700	4,950	5,025	5,075	5,100	4,300
INDY	2,200	-56.86	-4.35	Accumulate	39.1	21.3	(270.4)	2,425	2,125	2,175	2,150	2,125	2,225	2,250	2,275	2,450	2,075
INTP	12,700	-20.87	6.28	OverBought	76.0	40.9	(507.2)	14,450	12,350	12,300	11,850	11,200	13,400	14,050	14,500	14,250	11,650
ISAT	5,000	-8.26	-9.09	Trading	34.7	37.0	(72.7)	5,575	4,925	4,900	4,800	4,675	5,125	5,250	5,350	5,750	4,925
ITMG	35,800	-34.07	-7.73	Trading	35.9	29.5	(1,860.9)	41,950	35,100	34,600	33,350	31,150	38,050	40,250	41,500	40,900	35,550
JSMR	3,675	3.52	5.00	OverBought	70.4	41.3	(43.5)	4,125	3,625	3,550	3,425	3,225	3,875	4,075	4,200	4,050	3,400
KLBF	3,050	-8.27	3.39	OverBought	72.5	39.9	(81.0)	3,375	3,000	3,000	2,950	2,850	3,150	3,250	3,300	3,350	2,700
LSIP	1,820	-28.35	3.41	OverBought	65.5	32.7	(106.9)	2,110	1,780	1,760	1,690	1,570	1,950	2,070	2,140	2,100	1,710
MAPI	4,100	47.75	1.23	Trading	52.6	42.4	(36.0)	4,600	4,025	4,025	3,925	3,850	4,200	4,275	4,375	4,575	4,000
PGAS	2,525	-43.58	7.45	OverBought	68.9	37.9	(165.6)	2,850	2,475	2,475	2,425	2,350	2,600	2,675	2,725	2,850	2,225
PTBA	15,700	-34.45	6.44	StrongSell	83.8	35.3	(926.5)	17,100	15,250	15,250	14,800	14,000	16,500	17,300	17,750	16,800	13,700
RALS	640	-25.58	-9.86	Trading Sell	6.7	20.9	(29.0)	715	635	20,870	20,870	20,870	20,870	20,870	20,870	710	640
SGRO	2,725	-16.15	2.83	OverBought	62.2	30.4	(180.4)	2,950	2,700	2,650	2,575	2,450	2,850	2,975	3,050	2,950	2,550
SMCB	1,730	-22.25	2.98	OverBought	65.8	34.2	(71.5)	1,790	1,710	1,710	1,690	1,670	1,750	1,770	1,790	1,800	1,650
SMGR	8,000	-18.78	1.91	OverBought	64.5	39.0	(253.1)	8,650	7,900	7,900	7,750	7,600	8,200	8,350	8,500	8,650	7,550
SMRA	920	-14.81	-5.15	Trading	35.3	25.8	(66.8)	1,065	900	895	870	825	965	1,010	1,035	1,100	910
TINS	1,670	-41.40	-1.76	Trading	40.0	26.3	(134.4)	1,860	1,650	1,650	1,630	1,590	1,710	1,750	1,770	1,860	1,650
TLKM	7,400	-7.50	2.78	OverBought	71.0	50.8	2.1	7,700	7,250	7,350	7,300	7,200	7,500	7,600	7,650	7,700	7,100
UNTR	20,150	-17.08	2.28	OverBought	71.1	34.9	(884.1)	22,800	19,900	19,750	19,350	18,550	20,950	21,750	22,150	22,250	18,900
UNVR	16,100	0.31	5.92	OverBought	75.5	50.6	(117.3)	16,750	15,350	15,500	14,850	14,350	16,650	17,150	17,800	16,500	14,650

S1 = Support 1      S2 = Support 2      S3 = Support 3  
 R1 = Resisten 1      R2 = Resisten 2      R2 = Resisten 2  
 STO = Stochastic Oscillator  
 RSI = Relative Strength Index  
 MACD = Moving Average Convergence Divergence  
 H-5 = 5 hari sebelumnya

## RESEARCH TEAM

---

<b>Andrian Tanuwijaya</b>	Equity Analyst	(andrian.tanuwijaya@trimegah.com)
<b>Hanel Topada Era Tania</b>	Equity Analyst	(hanel.tania@trimegah.com)
<b>Paul Raymond Widjaja</b>	Equity Analyst	(paul.widjaja@trimegah.com)
<b>Michele Gabriela</b>	Equity Analyst	(michele.gabriela@trimegah.com)
<b>T Hedy Arifien</b>	Technical Analyst	(hedy@trimegah.com)
<b>Rovandi</b>	Research Assistant	(rovandi@trimegah.com)

## EQUITY CAPITAL MARKET TEAM

---

<b>Nathanael Benny Prasetyo</b>	Head of Retail ECM	(benny.prasetyo@trimegah.com)
<b>Windra Djulnaily</b>	Pluit, Jakarta	(windra.djulnaily@trimegah.com)
<b>Ariawan Anwar</b>	Artha Graha, Jakarta	(ariawan.anwar@trimegah.com)
<b>Ferry Zabur</b>	Kelapa Gading, Jakarta	(ferry.zabur@trimegah.com)
<b>Wirjawan Joesoef</b>	Mangga Dua, Jakarta	(iwan@trimegah.com)
<b>Lukman Abdul Azis</b>	Kebon Jeruk, Jakarta	(lukman@trimegah.com)
<b>Untung Wijaya</b>	Semarang, Jawa Tengah	(untung.wijaya@trimegah.com)
<b>Sonny Muljadi</b>	Surabaya, Jawa Timur	(sonny.muljadi@trimegah.com)
<b>Ni luh Ketut Sri Agustini</b>	Denpasar, Bali	(sri.agustini@trimegah.com)
<b>Philip Fernando Suwandi</b>	Makassar, Sulawesi Selatan	(philip.fs@trimegah.com)
<b>agus.jatmiko</b>	Balikpapan, Kalimantan Timur	(agus.jatmiko@trimegah.com)
<b>Asep Saepudin</b>	Bandung, Jawa Barat	(asep.saepudin@trimegah.com)
<b>Ariffianto</b>	Cirebon, Jawa Barat	(ariffianto@trimegah.com)
<b>Very Wijaya</b>	Medan, Sumatera Utara	(very.wijaya@trimegah.com)
<b>Tantie Rivi Watie</b>	Pekanbaru, Riau	(tantierw@trimegah.com)
<b>Agus Bambang Suseno</b>	Solo, Jawa Tengah	(agus.suseno@trimegah.com)
<b>Untung Wijaya</b>	Yogyakarta, Jawa Tengah	(untung.wijaya@trimegah.com)
<b>Donny Kristanto Setiadi</b>	Palembang, Sumatra Selatan	(donny.kristanto@trimegah.com)
<b>Rr. Putri Ayu Erikusuma</b>	Malang, Jawa Timur	(putri.ayu@trimegah.com)

**PT Trimegah Securities Tbk**  
18<sup>th</sup> Fl, Artha Graha Building  
Jl. Jend. Sudirman Kav. 52-53  
Jakarta 12190, INDONESIA  
Tel : (6221) 2924 9088 Fax : (6221) 2924 9163

## DISCLAIMER

This report has been prepared by PT Trimegah Securities Tbk on behalf of itself and its affiliated companies and is provided for information purposes only. Under no circumstances is it to be used or considered as an offer to sell, or a solicitation of any offer to buy. This report has been produced independently and the forecasts, opinions and expectations contained herein are entirely those of Trimegah Securities.

While all reasonable care has been taken to ensure that information contained herein is not untrue or misleading at the time of publication, Trimegah Securities makes no representation as to its accuracy or completeness and it should not be relied upon as such. This report is provided solely for the information of clients of Trimegah Securities who are expected to make their own investment decisions without reliance on this report. Neither Trimegah Securities nor any officer or employee of Trimegah Securities accept any liability whatsoever for any direct or consequential loss arising from any use of this report or its contents. Trimegah Securities and/or persons connected with it may have acted upon or used the information herein contained, or the research or analysis on which it is based, before publication. Trimegah Securities may in future participate in an offering of the company's equity securities.