

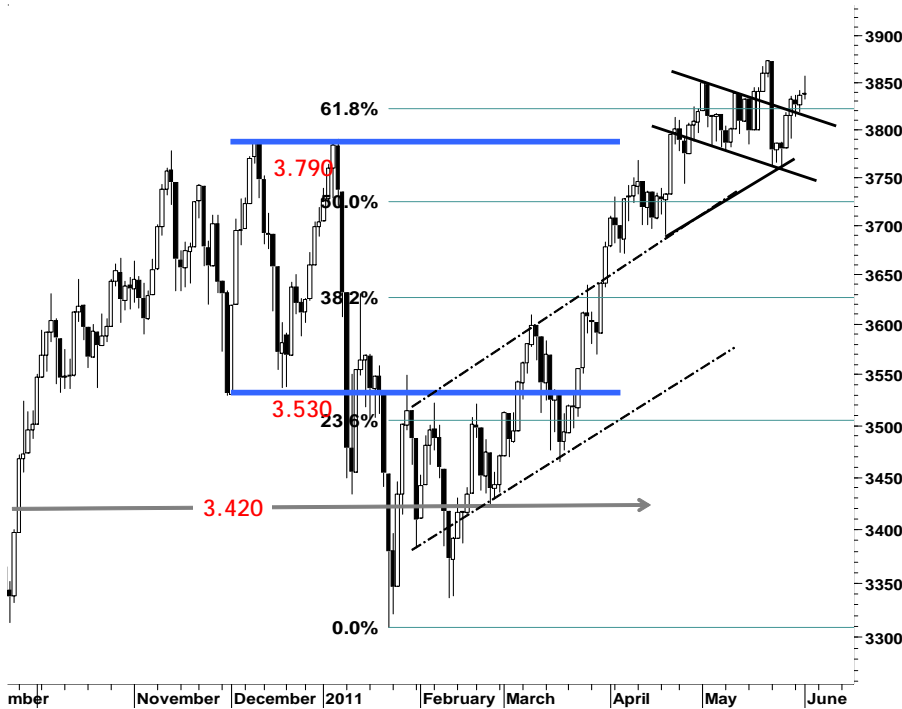
IHSG

3.837,8

0,8

0,02%

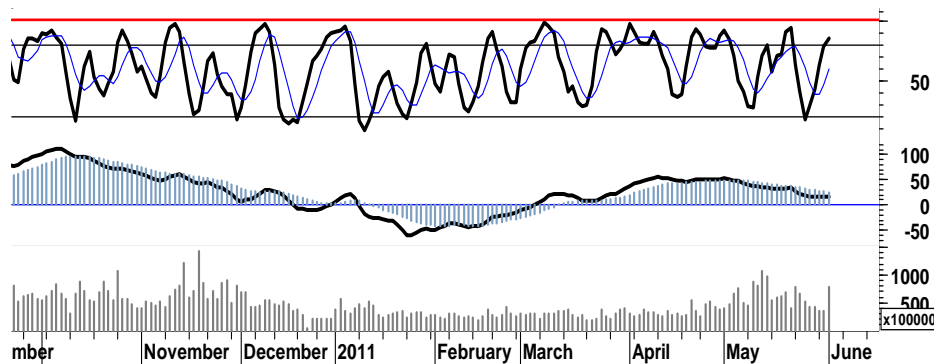
Ulusan Pasar



Sentimen positif inflasi domestik yang cukup baik IHSG tidak mampu untuk melanjutkan rally penguatannya, meskipun di tengah perdagangan Rabu kemarin berhasil menembus resistensi psikologis 3.850 dengan bergerak mengayun 0,5% menyentuh level 3.857. Diakhir sesi perdagangan IHSG justru kembali memasuki area konsolidasinya, dengan ditutup mencatatkan penguatan tipis 0,02% di level 3.838 sekalipun didampingi oleh frekuensi perdagangan tercatat sebesar 128rb transaksi serta nilai bersih pembelian investor asing sebesar Rp611miliar.

Dominasi tekanan jual dan profit taking yang terjadi pada beberapa emiten sektor perbankan mengakibatkan munculnya indikasi shooting star pada area overbought stochastic, yang mengindikasikan IHSG pada perdagangan di penghujung pekan ini akan kembali tertahan pada area konsolidasi 3.810 - 3.860.

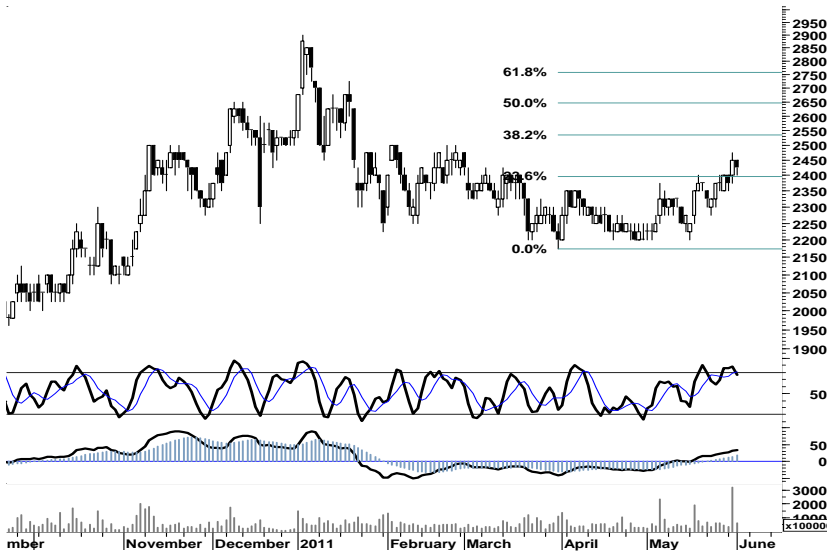
Apabila IHSG pada perdagangan hari ini gagal untuk kembali ke dalam area positif atau melakukan penetrasi 3.850, maka dapat di pastikan IHSG akan kembali mencoba bergerak dalam interval harga 3.815 - 3.845.



S1	S2	R1	R2
3,830	3,820	3,850	3,865

## Saham Pilihan

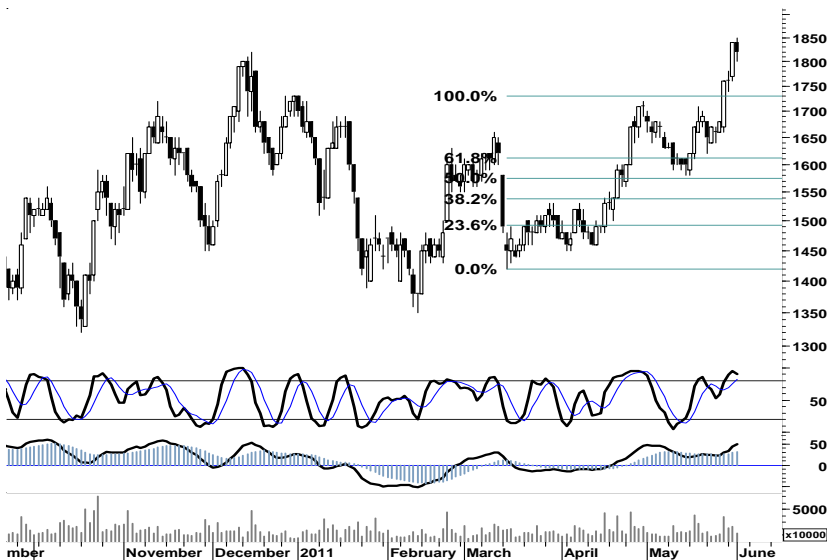
Saham	Harga (Rp)	Rekomendasi	Stochastic	RSI	BB Top	BB Bottom	S1	S2	R1	R2
ADRO	2,425	Trading Sell	76.47	61.05	2,475	2,375	2,400	2,375	2,475	2,500
AKRA	1,820	TakeProfit	90.57	71.63	1,910	1,690	1,800	1,780	1,880	1,900
BUMI	3,350	Trading Buy	33.33	44.52	3,400	3,300	3,325	3,275	3,425	3,475
EXCL	5,850	StrongBuy	16.67	34.01	6,550	5,750	5,700	5,500	6,400	6,600
JSMR	3,500	Trading Sell	85.71	63.18	3,525	3,450	3,475	3,450	3,550	3,575
MYOR	12,950	StrongSell	94.74	75.73	13,150	12,600	12,900	12,850	13,050	13,100



Waspada signal negatif serta indikasi dead-cross, membuka peluang bagi ADRO untuk menguji penetrasi support 2.400.

Spekulasi buy-back dapat dilakukan dalam interval 2.350 - 2.400, dengan memperketat stop-loss harga di level 2.275.

S1	S2	R1	R2
2,400	2,375	2,475	2,500



Indikasi dead-cross serta negative-sloop di sekitar area overbought, merupakan signal negatif yang memiliki peluang untuk menguji support area 1.750 - 1.780 apabila AKRA gagal melanjutkan rally penguatan menuju resistensi target terdekat di level 1.900

S1	S2	R1	R2
1,800	1,780	1,880	1,900



Sekalipun dibayangi oleh indikasi negative-sloop pada lagging indicator, BUMI kami perkirakan masih akan mencoba bertahan pada area konsolidasi dengan support 3.250 - 3.300.

S1	S2	R1	R2
3,325	3,275	3,425	3,475

EXCL

5,850

StrongBuy



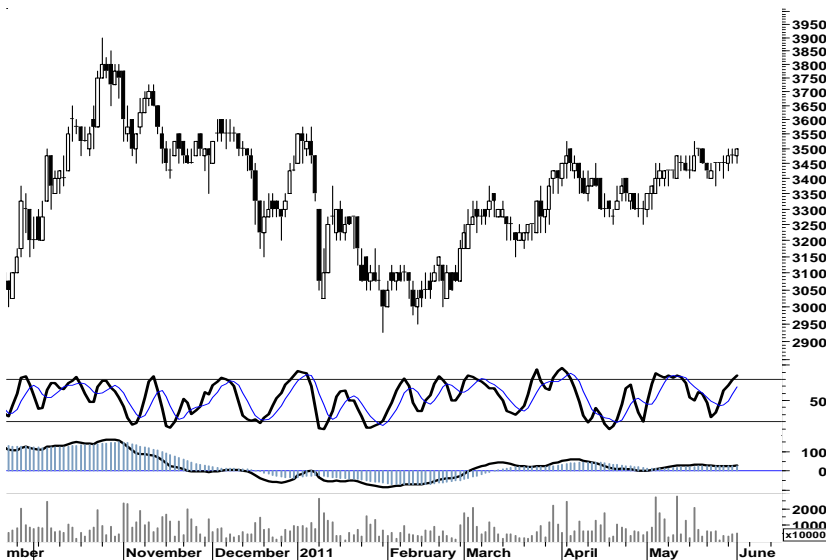
Terlihat minimnya ruang penyusutan harga dengan support target 5.500, akumulasi telah dapat di lakukan pada area tersebut. Dimana distribusi volume perdagangan akan mulai terlihat, pada saat EXCL berada pada area konsolidasi 5.450 - 5.900.

S1	S2	R1	R2
5,700	5,500	6,400	6,600

JSMR

3,500

Trading Sell



JSMR kembali ditutup pada resistensi psikologis 3.500, diharapkan mampu untuk melakukan penetrasi dan keluar dari area konsolidasi.

Kurangi porsi dengan merealisasikan sebagian profit, untuk mengantisipasi bottom swing 3.375 apabila JSMR gagal melakukan penetrasi 3.500.

S1	S2	R1	R2
3,475	3,450	3,550	3,575

MYOR

12,950

StrongSell



Lonjakan harga pada area overbought serta peak harga membuka lebar, peluang tekanan terhadap MYOR pada perdagangan hari ini menguji support celah 12.750

S1	S2	R1	R2
12,900	12,850	13,050	13,100

## TRADE DATA

**JCI (IHSG) 3,837.8 0.8 0.02%**

YTD (Rp)	3.6%	Volume (m)	8,797
YTD (USD)	8.5%	Nilai (Rpbn)	5,866
Moving Avg 20day	3,818	Mkt Cap (Rptr)	3,421
Moving Avg 50day	3,756	Market P/E (x)	16.4
Moving Avg 200day	3,562	Market Div. Yield (%)	2.4

**Indonesia & Sectors +/- (%) YTD (%)**

MSCI Indonesia	4,743.3	0.0	0.00	4.33
JII	532.5	0.0	0.00	-0.08
LQ45	682.3	0.0	0.00	3.16
JAKFIN Index	498.7	-2.9	-0.01	6.86
JAKINFR Index	790.0	-3.8	-0.00	-3.57
JAKMINE Index	3,259.1	22.8	0.01	-0.46
JAKCONS Index	1,129.5	7.1	0.01	3.19
JAKTRAD Index	512.2	-1.9	-0.00	8.03
JAKMIND Index	1,071.0	6.6	0.01	10.75
JAKBIND Index	403.5	-1.7	-0.00	4.20
JAKPROP Index	211.5	2.1	0.01	4.15
JAKAGRI Index	2,407.4	23.1	0.01	5.39

**Commodities +/- (%) YTD (%)**

CRB Index	347.90	2.0	0.57	4.54
<b>Oil &amp; Gas</b>				
Crude Oil	100.40	0.1	0.11	9.87
Natural Gas	4.79	0.2	3.56	8.83
COAL (Rotterdam)	121.85	-0.4	-0.29	-7.27
COAL (Amsterdam)	123.75	1.2	0.94	-1.75
COAL (Australia,wk)	118.40	0.0	0.00	-3.27
<b>Industrial Metals</b>				
Aluminium	2,605.8	-52.5	-1.97	5.96
Nickel	22,575	-675	-2.90	-8.79
Tin	26,600	-995	-3.61	-1.12
<b>Precious Metal</b>				
Gold	1,532.70	-10.5	-0.68	7.83
Silver	36.20	-1.5	-3.96	17.12
<b>Soft Commodities</b>				
CPO (Malaysia)	3,430.00	30.0	0.88	-10.07
CPO (Netherland)	1,187.50	0.0	0.00	-7.59
Rubber	5,131.03	-66.0	-1.27	2.75
Corn	766.50	8.0	1.05	21.86
Wheat	769.75	10.5	1.38	-3.08
Soybeans	1,407.00	20.8	1.50	0.95
Rice (Indonesia)	6,750.00	0.0	0.00	-4.93

**Winners**

Stock	Price	(%)	Stock	Price	(%)
ENRG	210	8.25	AMRT	3,250	-6.47
SMAR	7,900	3.95	EXCL	5,850	-4.88
ICBP	5,200	2.97	KLBF	3,450	-3.50
GGRM	44,500	2.18	INDY	4,225	-1.74
BYAN	17,700	1.72	BBRI	6,250	-1.57
BNII	590	1.72	BBNI	3,825	-1.29
BUMI	3,350	1.52	ADRO	2,425	-1.02
UNVR	14,800	0.68	BDMN	6,150	-0.81
TLKM	7,750	0.65	BMRI	7,150	-0.69
ASII	59,100	0.60	INTP	16,800	-0.59

**Losers**

Stock	Price	(%)	Stock	Price	(%)
AMRT	3,250	-6.47	EXCL	5,850	-4.88
EXCL	5,850	-4.88	KLBF	3,450	-3.50
KLBF	3,450	-3.50	INDY	4,225	-1.74
INDY	4,225	-1.74	BBRI	6,250	-1.57
BBRI	6,250	-1.57	BBNI	3,825	-1.29
BBNI	3,825	-1.29	ADRO	2,425	-1.02
ADRO	2,425	-1.02	BDMN	6,150	-0.81
BDMN	6,150	-0.81	BMRI	7,150	-0.69
BMRI	7,150	-0.69	INTP	16,800	-0.59
INTP	16,800	-0.59			

**Regional Indices**

			+/-	(%)	YTD (%)
MXWO	MSCI Word	1,325.4	-10.2	-0.77	3.54
SPX	S&P 500	1,312.9	-1.6	-0.12	4.40
<b>US</b>					
Dow Jones Industrial		12,248.6	-41.6	-0.34	5.80
Nasdaq	US	2,773.3	4.1	0.15	4.54
<b>Europe</b>					
EURO 50	Europe	274.7	-3.7	-1.33	-0.41
FTSE	London	5,847.9	-80.7	-1.36	-0.88
DAX	German	7,074.1	-143.3	-1.99	2.31
CAC	France	3,889.9	-74.9	-1.89	2.24
SMI	Swiss	6,496.5	0.0	0.00	0.94
<b>BRIC</b>					
BOVESPA	Brazil	64,218.1	806.6	1.27	-7.34
MICEX	Russia	1,658.4	7.7	0.47	-1.75
SENSEX	India	18,494.2	-114.6	-0.62	-9.82
NIFTY	India	5,550.4	-41.6	-0.74	-9.52
SHCOMP	China	2,705.2	-38.4	-1.40	-3.66
SZCOMP	China	1,105.9	-16.3	-1.46	-14.33

**Developed ASIA**

Nikkei	Japan	9,555.0	-164.6	-1.69	-6.59
TPX	Japan	825.8	-13.7	-1.63	-8.13
HIS	Hong kong	23,253.8	-372.6	-1.58	0.95
KOSPI	S.Korea	2,114.2	-27.1	-1.27	3.08
TAIEX	Taiwan	8,991.4	-71.0	-0.78	0.21
FSSTI	Singapore	3,160.6	-12.3	-0.39	-0.92
<b>ASEAN</b>					
SET	Thailand	1,059.8	-5.8	-0.55	2.62
PCOMP	Philippines	4,325.0	38.5	0.90	2.95
KLCI	Malaysia	1,558.0	1.6	0.10	2.58
VNINDEX	Vietnam	450.6	14.9	3.42	-7.03

**Currency**

			+/-	(%)	YTD (%)
EURUSD	Euro	1.449	0.016	1.14	8.27
GBPUSD	United Kingdom	1.637	0.004	0.23	4.86
USDCHF	Switzerland	0.843	0.001	0.06	-9.91
USDCAD	Canada	0.976	-0.001	-0.13	-2.21
AUDUSD	Australia	1.067	0.006	0.53	4.27
NZDUSD	New Zealand	0.816	0.001	0.11	4.52
USDJPY	Japan	80.9	-0.050	-0.06	-0.27
USDCNY	China	6.483	0.005	0.07	-1.88
USDHKD	Hongkong	7.778	-0.001	-0.02	0.07
USDSGD	Singapore	1.233	-0.006	-0.50	-3.93
Rupiah	Indonesia	8,543.0	5.000	0.06	-5.04

**Value**

Value	(Rpbn)	Volume	(Lot)	Freq	(x)
BUMI	248,236	ENRG	1,980,798	BHIT	9,468
BBRI	225,171	DEWA	1,927,427	JPRS	5,648
ENRG	199,112	BNBR	1,468,283	ENRG	5,498
ASII	167,882	ELTY	1,086,434	DEWA	4,116
ADRO	144,493	BHIT	832,036	ELTY	3,472
BMRI	134,216	ASRI	656,736	BNBR	2,596
ASRI	109,499	TRUB	547,796	ASRI	2,546
DEWA	101,743	MYRX	217,657	NIKL	2,421
BHIT	93,679	LPKR	188,116	EXCL	2,235
EXCL	91,025	MIRA	166,564	BUMI	2,185

Code	Last	Ytd Chg(%)	H-5 Chg (%)	Rekomendasi	STO	RSI	MACD	Bollinger Band		Support			Resistance			H-5	
								Top	Bottom	1	2	3	1	2	3	Highest	Lowest
AALI	23,650	-11.75	3.96	OverBought	76.9	54.4	37.6	23,950	22,950	23,450	23,250	23,000	23,900	24,150	24,350	23,900	22,750
ACES	2,600	-8.77	-3.70	Trading	50.0	41.0	12.4	2,750	2,600	2,600	2,600	2,600	2,600	2,600	2,600	2,700	2,600
ADRO	2,425	-9.35	2.11	Trading Sell	76.5	61.1	36.6	2,475	2,375	2,400	2,375	2,350	2,450	2,475	2,500	2,475	2,300
AKRA	1,820	7.06	9.64	TakeProfit	90.6	71.6	48.6	1,910	1,690	1,800	1,780	1,750	1,850	1,880	1,900	1,850	1,640
ANTM	2,150	-13.13	2.38	OverBought	66.7	40.4	(31.7)	2,150	2,150	2,125	2,100	2,075	2,175	2,200	2,225	2,175	2,100
ASII	59,100	8.64	1.72	Trading	56.3	56.0	709.6	59,400	58,700	58,550	57,950	57,300	59,800	60,450	61,050	60,000	57,300
BBCA	7,100	10.08	0.00	OverSold	35.7	46.1	(35.5)	7,250	7,050	7,050	7,000	6,900	7,200	7,300	7,350	7,250	7,000
BBNI	3,825	0.66	1.32	OverBought	68.8	44.1	(30.8)	3,900	3,800	3,800	3,750	3,700	3,900	3,950	4,000	3,900	3,750
BBRI	6,250	20.77	1.63	OverBought	60.0	51.3	31.0	6,450	6,200	6,200	6,100	5,950	6,450	6,600	6,700	6,500	6,100
BBTN	1,650	-1.20	2.48	OverBought	78.9	50.0	(13.2)	1,680	1,610	1,640	1,630	1,610	1,670	1,690	1,700	1,670	1,590
BDMN	6,150	11.82	5.13	StrongSell	90.0	52.6	(47.4)	6,300	5,950	6,100	6,050	6,000	6,200	6,250	6,300	6,200	5,850
BISI	1,590	-14.97	3.25	OverBought	63.2	45.3	(33.4)	1,600	1,550	1,570	1,550	1,530	1,610	1,630	1,650	1,610	1,530
BMRI	7,150	10.85	2.88	StrongSell	81.0	54.8	50.7	7,350	7,050	7,150	7,100	7,050	7,250	7,300	7,350	7,250	6,900
BSDE	910	3.41	0.00	Trading	58.3	54.4	6.7	920	905	900	890	880	920	930	940	930	890
BTEL	365	55.32	-2.67	OverBought	70.0	39.7	(1.7)	378	363	355	345	335	375	385	395	375	355
BUMI	3,350	7.20	-1.47	Trading Buy	33.3	44.5	(16.9)	3,400	3,300	3,325	3,275	3,250	3,400	3,425	3,475	3,425	3,300
CTRA	420	20.00	2.44	TakeProfit	65.0	60.2	8.2	424	414	412	404	397	427	434	442	430	390
ELTY	165	2.48	1.23	OverBought	61.9	58.3	4.5	167	159	161	157	154	168	171	175	167	151
EXCL	5,850	11.43	-8.59	StrongBuy	16.7	34.0	(2.9)	6,550	5,750	5,700	5,500	5,250	6,150	6,400	6,600	6,600	5,750
GGRM	44,500	8.40	2.30	TakeProfit	63.6	68.7	694.4	44,650	43,150	43,700	42,850	42,400	45,000	45,450	46,300	44,600	43,300
HEXA	6,450	-11.03	2.38	Trading	52.9	55.2	130.8	6,600	6,350	6,400	6,350	6,250	6,550	6,650	6,700	6,600	6,300
INCO	4,800	-3.52	0.00	OverSold	20.0	46.3	(12.0)	4,900	4,750	4,800	4,775	4,750	4,850	4,875	4,900	4,900	4,775
INDF	5,450	10.10	1.87	Trading	57.1	48.7	(24.8)	5,500	5,350	5,400	5,350	5,300	5,500	5,550	5,600	5,500	5,250
INDY	4,225	-17.16	3.05	OverBought	76.2	55.2	50.7	4,375	4,225	4,175	4,125	4,050	4,300	4,375	4,425	4,375	3,975
INTP	16,800	4.67	-0.88	OverSold	34.1	49.0	50.8	17,300	16,650	16,650	16,500	16,300	17,000	17,200	17,350	17,400	16,650
ISAT	5,250	-3.67	0.00	Trading	50.0	47.8	(19.1)	5,300	5,200	5,250	5,200	5,200	5,300	5,300	5,350	5,300	5,200
ITMG	46,950	-13.54	0.64	Trading	59.1	49.9	(69.2)	47,850	46,600	46,650	46,350	46,100	47,200	47,450	47,750	47,800	46,500
JSMR	3,500	-1.41	1.45	Trading Sell	85.7	63.2	23.8	3,525	3,450	3,475	3,450	3,425	3,525	3,550	3,575	3,500	3,375
KLBF	3,450	3.76	2.22	OverBought	66.7	50.7	(16.6)	3,625	3,325	3,400	3,350	3,250	3,550	3,650	3,700	3,575	3,350
LSIP	2,400	-5.51	1.05	OverBought	64.3	50.7	3.0	2,450	2,400	2,400	2,375	2,350	2,450	2,475	2,500	2,450	2,325
MYOR	12,950	19.91	6.15	StrongSell	94.7	75.7	386.1	13,150	12,600	12,900	12,850	12,800	13,000	13,050	13,100	13,000	12,100
PGAS	4,050	-9.50	1.25	OverBought	68.4	53.8	7.1	4,075	4,050	4,050	4,050	4,025	4,075	4,100	4,100	4,100	3,950
PTBA	21,400	-10.65	0.94	Trading	57.5	48.7	(137.1)	21,700	21,150	21,200	20,950	20,800	21,600	21,750	22,000	21,650	21,050
RALS	810	-5.81	5.19	Trading Sell	72.0	58.7	11.3	870	755	20,870	20,870	20,870	20,870	20,870	20,870	860	750
SGRO	3,450	6.15	2.22	OverBought	66.7	57.2	33.0	3,475	3,425	3,425	3,400	3,350	3,500	3,550	3,575	3,525	3,375
SMCB	2,225	0.00	5.95	OverBought	69.6	57.7	12.3	2,300	2,125	2,200	2,150	2,100	2,300	2,350	2,400	2,300	2,075
SMGR	9,650	-2.03	-0.52	Trading	55.6	58.7	79.4	9,800	9,650	9,550	9,450	9,350	9,750	9,850	9,950	9,800	9,500
SMRA	1,150	6.48	5.50	StrongSell	85.7	55.4	(7.2)	1,180	1,110	1,140	1,120	1,110	1,170	1,180	1,200	1,160	1,080
TINS	2,625	-7.89	0.96	Trading	44.4	43.5	(40.9)	2,650	2,600	2,600	2,550	2,525	2,675	2,700	2,750	2,650	2,575
TLKM	7,750	-3.13	0.65	StrongSell	80.0	58.9	60.1	7,800	7,600	7,700	7,650	7,600	7,800	7,850	7,900	7,750	7,550
UNTR	22,950	-5.56	4.32	StrongSell	92.5	59.9	181.1	23,450	22,300	22,850	22,700	22,650	23,050	23,100	23,250	23,050	21,900
UNVR	14,800	-7.79	0.00	OverSold	25.0	40.9	(87.0)	14,950	14,700	14,750	14,650	14,550	14,950	15,050	15,150	14,950	14,700

S1 = Support 1      S2 = Support 2      S3 = Support 3  
 R1 = Resisten 1      R2 = Resisten 2      R2 = Resisten 2  
 STO = Stochastic Oscillator  
 RSI = Relative Strength Index  
 MACD = Moving Average Convergence Divergence  
 H-5 = 5 hari sebelumnya

## RESEARCH TEAM

---

<b>Andrian Tanuwijaya</b>	Equity Analyst	(andrian.tanuwijaya@trimegah.com)
<b>Hanel Topada Era Tania</b>	Equity Analyst	(hanel.tania@trimegah.com)
<b>T Heldy Arifien</b>	Technical Analyst	(heldy@trimegah.com)
<b>Rovandi</b>	Research Assistant	(rovandi@trimegah.com)

## EQUITY CAPITAL MARKET TEAM

---

<b>Nathanael Benny Prasetyo</b>	Head of Retail ECM	(benny.prasetyo@trimegah.com)
<b>Windra Djulnaily</b>	Pluit, Jakarta	(windra.djulnaily@trimegah.com)
<b>Ariawan Anwar</b>	Artha Graha, Jakarta	(ariawan.anwar@trimegah.com)
<b>Ferry Zabur</b>	Kelapa Gading, Jakarta	(ferry.zabur@trimegah.com)
<b>Wirjawan Joesoef</b>	Mangga Dua, Jakarta	(iwan@trimegah.com)
<b>Lukman Abdul Azis</b>	Kebon Jeruk, Jakarta	(lukman@trimegah.com)
<b>Tutik Suciati</b>	Semarang, Jawa Tengah	(tuty.s@trimegah.com)
<b>Sonny Muljadi</b>	Surabaya, Jawa Timur	(sonny.muljadi@trimegah.com)
<b>Ni Luh Ketut Sri Agustini</b>	Denpasar, Bali	(sri.agustini@trimegah.com)
<b>Philip Fernando Suwandi</b>	Makassar, Sulawesi Selatan	(philip.fs@trimegah.com)
<b>agus.jatmiko</b>	Balikpapan, Kalimantan Timur	(agus.jatmiko@trimegah.com)
<b>Asep Saepudin</b>	Bandung, Jawa Barat	(asep.saepudin@trimegah.com)
<b>Asep Saepudin</b>	Cirebon, Jawa Barat	(asep.saepudin@trimegah.com)
<b>Very Wijaya</b>	Medan, Sumatera Utara	(very.wijaya@trimegah.com)
<b>Tantie Rivi Watie</b>	Pekanbaru, Riau	(tantierw@trimegah.com)
<b>Agus Bambang Suseno</b>	Solo, Jawa Tengah	(agus.suseno@trimegah.com)
<b>Agus Bambang Suseno</b>	Yogyakarta, Jawa Tengah	(agus.suseno@trimegah.com)
<b>Donny Kristanto Setiadi</b>	Palembang, Sumatra Selatan	(donny.kristanto@trimegah.com)
<b>Sonny Muljadi</b>	Malang, Jawa Timur	(sonny.muljadi@trimegah.com)

**PT Trimegah Securities Tbk**  
18<sup>th</sup> Fl, Artha Graha Building  
Jl. Jend. Sudirman Kav. 52-53  
Jakarta 12190, INDONESIA  
Tel : (6221) 2924 9088 Fax : (6221) 2924 9163

### DISCLAIMER

This report has been prepared by PT Trimegah Securities Tbk on behalf of itself and its affiliated companies and is provided for information purposes only. Under no circumstances is it to be used or considered as an offer to sell, or a solicitation of any offer to buy. This report has been produced independently and the forecasts, opinions and expectations contained herein are entirely those of Trimegah Securities.

While all reasonable care has been taken to ensure that information contained herein is not untrue or misleading at the time of publication, Trimegah Securities makes no representation as to its accuracy or completeness and it should not be relied upon as such. This report is provided solely for the information of clients of Trimegah Securities who are expected to make their own investment decisions without reliance on this report. Neither Trimegah Securities nor any officer or employee of Trimegah Securities accept any liability whatsoever for any direct or consequential loss arising from any use of this report or its contents. Trimegah Securities and/or persons connected with it may have acted upon or used the information herein contained, or the research or analysis on which it is based, before publication. Trimegah Securities may in future participate in an offering of the company's equity securities.