

IHSG 4.136,5 -41,3 -0,99%

Ulisan Pasar



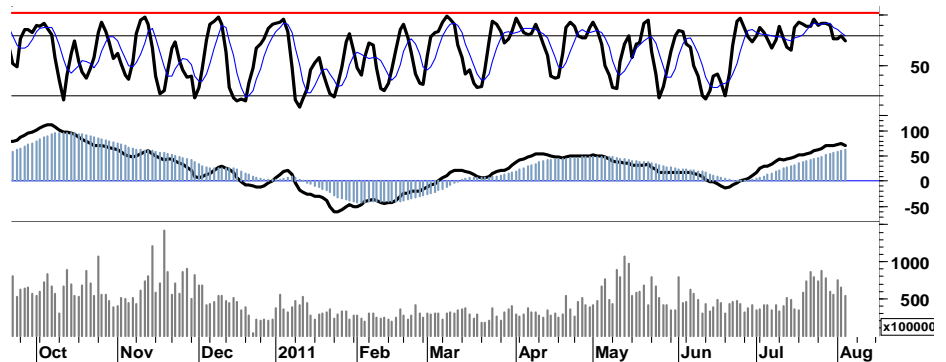
Kekhawatiran perlambatan perekonomian global mendorong aksi profit taking pada perdagangan kemarin, dan menekan IHSG melanjutkan pelemahan menguji kekuatan support retracement 4.135 dengan ditutup melemah 41 poin di level 4.137 setelah sebelumnya terpuruk 2,0% mendarat di area support 4.095.

Pergerakan Indeks pada bursa-bursa utama Asia-Pacific yang juga ditutup melemah rata-rata 1,3%, serta aksi profit taking terhadap sejumlah saham unggulan merupakan katalis yang turut menahan laju kenaikan IHSG. Pada perdagangan kemarin para investor asing membukukan nilai total pembelian bersih senilai Rp539 miliar, dengan 146rb aktifitas perdagangan yang terjadi.

Secara umum IHSG masih berada dalam kondisi bullish, beberapa leading indicator yang ada mengkonfirmasi pergerakan IHSG memasuki area distribusi (konsolidasi).

Ditutupnya IHSG pada area berimbang pivot support 4.136/4.135, peluang berlanjutnya tekanan sama besarnya dengan sisa kekuatan yang tersedia untuk bertahan pada support 4.095 dan/atau menguji resistensi harga 4.180.

Berdasarkan asumsi tersebut, kami perkirakan IHSG pada perdagangan hari ini akan mencoba bergerak dalam interval harga 4.095 - 4.180.



S1	S2	R1	R2
4,095	4,055	4,180	4,220

Saham Pilihan

Saham	Harga (Rp)	Rekomendasi	Stochastic	RSI	BB Top	BB Bottom	S1	S2	R1	R2
ASII	70,650	OverSold	28.73	55.53	72,100	70,050	69,300	67,900	72,900	74,300
BBCA	8,700	TradingSell	92.50	71.85	9,050	8,200	8,650	8,550	8,950	9,050
HRUM	9,750	OverSold	21.05	46.41	10,000	9,550	9,650	9,550	9,950	10,050
SGRO	3,700	Trading	47.37	59.77	3,725	3,650	3,600	3,500	3,800	3,900
SMCB	2,100	Trading	42.86	44.39	2,125	2,100	2,075	2,050	2,150	2,175
UNTR	26,100	Trading	51.97	55.43	27,850	25,700	25,850	25,600	26,600	26,850

ASII

70,650

OverSold



Berbasis asumsi yang didukung beberapa lagging indicator yang ada, tekanan pelemahan yang terjadi selama sepekan telah menekan pergerakan ASII memasuki area konsolidasi 69.500 - 72.500.

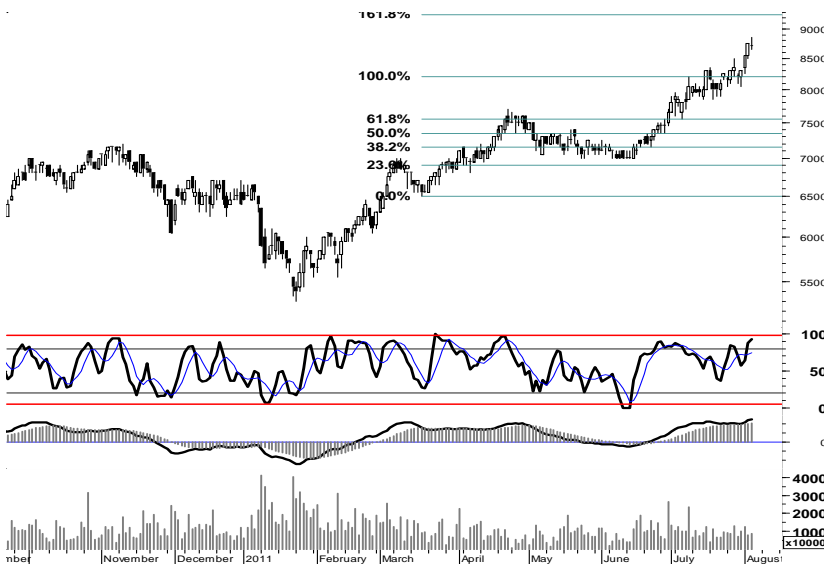
Secara umum, akumulasi pada area support 69.500 telah dapat dilakukan dengan memperhatikan stoploss harga pada level 68.500.

S1	S2	R1	R2
69,300	67,900	72,900	74,300

BBCA

8,700

TradingSell



Ruang penguatan yang mulai terbatas serta munculnya candle doji pada puncak kenaikan BBCA kemarin, mengindikasikan rally penguatan mulai dibayangi oleh aksi profit taking.

Dalam memanfaatkan momentum pada ruang 8.650 - 8.950, waspadai potensi berlanjutnya tekanan menguji kekuatan support 8.550 apabila BBCA gagal melakukan pergerakan di atas support 8.650.

S1	S2	R1	R2
8,650	8,550	8,950	9,050

HRUM

9,750

OverSold



Berada pada area konsolidasi dengan signal positif golden cross pada area oversold stochastic, HRUM memiliki peluang untuk bergerak mix positif dalam rentang harga 9.650-9.950.

S1	S2	R1	R2
9,650	9,550	9,950	10,050

SGRO

3,700

Trading



Signal positif golden-cross stochastic pada area trading positif, merupakan peluang untuk memanfaatkan ruang pergerakan dalam interval 3.600 - 3.800.

S1	S2	R1	R2
3,600	3,500	3,800	3,900

SMCB

2,100

Trading



Sebagaimana halnya SGRO dan HRUM, SMCB pun memiliki peluang untuk bergerak kembali pada zona hijau trading.

Signal positif goldencross membuka peluang bagi SMCB untuk bergerak dalam rentang harga 2.075-2.150.

S1	S2	R1	R2
2,075	2,050	2,150	2,175

UNTR

26,100

Trading



Ditutup pada area berimbang pivot support 26.100, UNVR memiliki peluang yang sama besarnya untuk bergerak mix-positif dan bertahan pada basis support 26.100 atau kembali melanjutkan pelemahan menguji support 25.850.

Secara umum UNTR telah memasuki area konsolidasi dengan basis akumulasi support pada area 25.500 - 25.800.

S1	S2	R1	R2
25,850	25,600	26,600	26,850

TRADE DATA

JCI (IHSG) 4,136.5 -41.3 -0.99%

YTD (Rp)	11.7% Volume (m) :	5,129
YTD (USD)	18.3% Nilai (Rpbn) :	3,328
Moving Avg 20day	4,067 Mkt Cap (Rpbn) :	3,439
Moving Avg 50day	3,921 Market P/E (x) :	16.2
Moving Avg 200day	3,702 Market Div. Yield (%) :	2.4

Indonesia & Sectors +/- (%) YTD (%)

MSCI Indonesia	5,137.6	-55.5	-1.07	13.00
JII	565.3	-4.7	-0.83	6.09
LQ45	732.7	-7.9	-1.07	10.79
JAKFIN Index	549.9	-6.4	-0.01	17.84
JAKINFR Index	780.6	-11.8	-0.01	-4.71
JAKMINE Index	3,348.0	-43.5	-0.01	2.25
JAKCONS Index	1,268.0	-6.3	-0.00	15.83
JAKTRAD Index	575.0	-7.0	-0.01	21.29
JAKMIND Index	1,290.8	-6.6	-0.01	33.48
JAKBIND Index	409.8	-0.3	-0.00	5.83
JAKPROP Index	237.0	-3.9	-0.02	16.70
JAKAGRI Index	2,427.3	-11.2	-0.00	6.26

Commodities +/- (%) YTD (%)

CRB Index	337.32	-4.5	-1.32	1.36
Oil & Gas				
Crude Oil	91.93	-1.9	-1.98	0.60
Natural Gas	4.09	-0.1	-1.56	-7.15
COAL (Rotterdam)	126.70	0.1	0.08	-3.58
COAL (Amsterdam)	126.78	0.3	0.21	0.66
COAL (Australia,wk)	119.20	0.0	0.00	-2.61
Industrial Metals				
Alumunium	2,512.50	-59.0	-2.29	2.17
Nickel	23,805	-995	-4.01	-3.82
Tin	26,300	-950	-3.49	-2.23
Precious Metal				
Gold	1,664.90	21.8	1.33	17.13
Silver	41.76	1.7	4.16	35.10
Soft Commodities				
CPO (Malaysia)	3,147.00	26.0	0.83	-17.49
CPO (Netherlands)	1,105.00	2.5	0.23	-14.01
Rubber	4,984.43	26.6	0.54	-0.19
Corn	706.00	-5.3	-0.74	12.24
Wheat	710.50	-7.5	-1.04	-10.54
Soybeans	1,363.75	-6.3	-0.46	-2.15
Rice (Indonesia)	7,300.00	0.0	0.00	2.82

Winners

Stock	Price	(%)	Stock	Price	(%)
BVIC	166	21.17	PGAS	3,825	-4.38
ASGR	1,210	17.48	INTP	14,750	-3.28
CPIN	2,750	8.91	BMRI	7,650	-3.16
MASA	580	7.41	ITMG	49,000	-2.78
SOBI	2,700	5.88	GGRM	52,000	-2.35
GJTL	3,150	4.13	ADRO	2,600	-1.89
INDF	6,450	2.38	UNTR	26,100	-1.51
JPFA	5,400	1.89	ASII	70,650	-0.77
PBNB	920	1.10	BBRI	7,200	-0.69
UNVR	16,100	0.63	BBCA	8,700	-0.57

Losers

Stock	Price	(%)	Stock	Price	(%)
BVIC	166	21.17	PGAS	3,825	-4.38
ASGR	1,210	17.48	INTP	14,750	-3.28
CPIN	2,750	8.91	BMRI	7,650	-3.16
MASA	580	7.41	ITMG	49,000	-2.78
SOBI	2,700	5.88	GGRM	52,000	-2.35
GJTL	3,150	4.13	ADRO	2,600	-1.89
INDF	6,450	2.38	UNTR	26,100	-1.51
JPFA	5,400	1.89	ASII	70,650	-0.77
PBNB	920	1.10	BBRI	7,200	-0.69
UNVR	16,100	0.63	BBCA	8,700	-0.57

Regional Indices +/- (%) YTD (%)

MXWO	MSCI Word	1,262.7	-6.7	-0.53	-1.36
SPX	S&P 500	1,260.3	6.3	0.50	0.21
US					
Dow Jones Industrial		11,896.4	29.8	0.25	2.75
Nasdaq	US	2,693.1	23.8	0.89	1.52
Europe					
EURO 50	Europe	252.0	-5.0	-1.96	-8.65
FTSE	London	5,584.5	-133.9	-2.34	-5.35
DAX	German	6,640.6	-156.2	-2.30	-3.96
CAC	France	3,454.9	-67.8	-1.93	-9.19
SMI	Swiss	5,483.2	-63.8	-1.15	-14.81
BRIC					
BOVESPA	Brazil	56,017.2	-1,293.6	-2.26	-19.17
MICEX	Russia	1,655.4	-57.9	-3.38	-1.93
SENSEX	India	17,940.6	-169.3	-0.94	-12.52
NIFTY	India	5,404.8	-51.8	-0.95	-11.90
SHCOMP	China	2,678.5	-0.8	-0.03	-4.61
SZCOMP	China	1,185.2	5.2	0.44	-8.19

Developed ASIA

Nikkei	Japan	9,637.1	-207.5	-2.11	-5.79
TPX	Japan	826.8	-17.2	-2.04	-8.02
HIS	Hong kong	21,992.7	-428.7	-1.91	-4.53
KOSPI	S.Korea	2,066.3	-55.0	-2.59	0.74
TAIEX	Taiwan	8,456.9	-127.9	-1.49	-5.75
FSSTI	Singapore	3,130.3	-46.8	-1.47	-1.87

ASEAN

SET	Thailand	1,133.5	-6.1	-0.54	9.75
PCOMP	Philippines	4,488.5	-52.8	-1.16	6.84
KLCI	Malaysia	1,545.1	-9.8	-0.63	1.72
VNINDEX	Vietnam	391.5	-5.1	-1.28	-19.23

Currency +/- (%) YTD (%)

EURUSD	Euro	1.432	0.012	0.84	7.02
GBPUSD	United Kingdom	1.643	0.013	0.79	5.22
USDCHE	Switzerland	0.770	0.008	1.08	-17.62
USDCAD	Canada	0.962	0.001	0.08	-3.60
AUDUSD	Australia	1.076	-0.002	-0.22	5.10
NZDUSD	New Zealand	0.864	-0.003	-0.35	10.68
USDJPY	Japan	77.1	-0.090	-0.12	-5.00
USDCNY	China	6.434	-0.004	-0.06	-2.61
USDHKD	Hongkong	7.800	0.004	0.05	0.34
USDSGD	Singapore	1.205	-0.001	-0.07	-6.09
Rupiah	Indonesia	8,489.0	13.000	0.15	-5.64

Value (Rpbn) Volume (Lot) Freq (x)

BUMI	353,525	ELTY	1,395,869	BVIC	5,240
PGAS	331,188	ENRG	603,346	BHIT	4,734
ASII	314,402	BNBR	578,054	PGAS	3,772
BMRI	285,724	BVIC	552,783	CPIN	3,676
TLKM	212,389	SIPD	536,996	ELTY	3,553
BBRI	207,161	BKSL	384,846	BNBR	3,397
ITMG	181,298	DEWA	303,796	ASGR	2,677
INTP	180,245	KIJA	234,784	BMRI	2,647
SMGR	164,772	BUMI	222,259	ASII	2,633
ELTY	117,512	PGAS	172,306	BUMI	2,561

Code	Last	Ytd Chg(%)	H-5 Chg (%)	Rekomendasi	STO	RSI	MACD	Bollinger Band		Support			Resistance			H-5	
								Top	Bottom	1	2	3	1	2	3	Highest	Lowest
AALI	22,900	-14.55	-3.38	OverSold	30.6	41.5	35.6	23,700	22,750	22,750	22,600	22,350	23,150	23,400	23,550	23,800	22,800
ACES	3,400	19.30	-2.16	OverSold	37.5	63.9	122.2	3,475	3,375	3,350	3,275	3,250	3,450	3,475	3,550	3,500	3,300
ADRO	2,600	-2.80	0.00	OverBought	63.2	54.6	43.1	2,700	2,600	2,550	2,500	2,450	2,650	2,700	2,750	2,700	2,550
AISA	750	-3.85	-3.85	OverSold	31.8	54.1	16.1	765	745	740	725	720	760	765	780	810	730
ANTM	2,000	-19.19	-2.44	OverSold	37.5	40.5	(17.3)	2,060	1,980	1,990	1,970	1,950	2,020	2,040	2,060	2,050	1,990
ASII	70,650	29.87	-5.80	OverSold	28.7	55.5	2,011.5	72,100	70,050	69,300	67,900	66,800	71,800	72,900	74,300	75,950	69,000
BBCA	8,700	34.88	4.19	TradingSell	92.5	71.8	251.8	9,050	8,200	8,650	8,550	8,450	8,850	8,950	9,050	8,850	8,050
BBNI	4,375	15.13	-2.23	TakeProfit	67.3	64.7	157.2	4,600	4,325	4,300	4,200	4,125	4,475	4,550	4,650	4,600	4,175
BBRI	7,200	39.13	4.35	TradingSell	97.2	69.2	145.1	7,550	6,800	7,100	7,000	6,950	7,250	7,300	7,400	7,250	6,650
BDMN	5,600	1.82	0.90	TradingSell	100.0	43.9	(98.9)	5,700	5,450	5,550	5,500	5,450	5,650	5,700	5,750	5,600	5,300
BISI	1,380	-26.20	-8.00	StrongBuy	17.5	40.7	7.4	1,520	1,330	1,360	1,340	1,320	1,400	1,420	1,440	1,520	1,350
BMRI	7,650	18.60	-4.97	Trading	44.8	50.4	149.6	8,100	7,600	7,600	7,500	7,400	7,800	7,900	8,000	8,150	7,600
BSDE	1,020	15.91	-1.92	OverBought	63.0	59.1	38.1	1,080	1,000	1,000	980	960	1,040	1,060	1,080	1,080	990
BTEL	355	51.06	-1.39	Trading	50.0	47.6	(0.3)	365	349	345	335	330	360	365	375	365	340
BUMI	3,200	2.40	3.23	TradingSell	90.5	59.1	14.8	3,300	3,050	3,175	3,125	3,100	3,250	3,275	3,325	3,225	3,025
BWPT	1,250	-4.58	0.81	TakeProfit	64.7	64.4	15.1	1,260	1,230	1,230	1,210	1,200	1,260	1,270	1,290	1,260	1,210
ELTY	169	4.97	-1.17	Trading	56.3	57.3	5.3	177	167	167	164	162	172	174	177	177	166
EXCL	5,650	7.62	-5.83	Accumulate	24.2	35.0	(97.1)	5,950	5,450	5,600	5,550	5,500	5,700	5,750	5,800	6,050	5,500
GGRM	52,000	26.67	-0.76	OverBought	63.9	55.5	1,170.0	54,150	50,600	51,700	51,400	51,000	52,400	52,800	53,100	54,300	50,600
HEXA	8,050	11.03	-1.83	TradingSell	81.3	60.7	279.3	8,350	8,000	8,000	7,950	7,850	8,150	8,250	8,300	8,300	7,650
HRUM	9,750	3.17	-3.47	OverSold	21.1	46.4	64.2	10,000	9,550	9,650	9,550	9,450	9,850	9,950	10,050	10,550	9,550
INCO	4,125	-17.09	-4.07	Accumulate	31.8	25.3	(80.0)	4,325	4,100	4,075	4,025	3,975	4,175	4,225	4,275	4,325	4,050
INDF	6,450	30.30	5.74	TakeProfit	74.1	69.9	180.0	6,500	6,300	6,250	6,050	5,950	6,550	6,650	6,850	6,500	6,050
INDY	3,625	-28.92	-4.61	StrongBuy	17.9	32.7	(46.5)	3,775	3,575	3,600	3,550	3,525	3,675	3,700	3,750	3,850	3,575
INTP	14,750	-8.10	-10.06	StrongBuy	11.5	24.9	(356.7)	16,000	14,500	14,700	14,600	14,450	14,950	15,100	15,200	16,400	14,750
ISAT	5,800	6.42	6.42	TradingSell	95.2	70.2	128.7	6,050	5,350	5,750	5,650	5,600	5,900	5,950	6,050	5,850	5,400
ITMG	49,000	-9.76	-5.13	OverSold	36.2	51.6	1,037.2	51,650	48,550	48,400	47,750	47,200	49,600	50,150	50,800	52,000	48,300
JSMR	3,950	11.27	0.00	TakeProfit	63.6	64.3	104.5	4,050	3,925	3,925	3,900	3,875	3,975	4,000	4,025	4,050	3,875
KLBF	3,400	2.26	-1.45	OverSold	37.5	40.1	(6.1)	3,550	3,400	3,400	3,375	3,350	3,450	3,475	3,500	3,550	3,400
LSIP	2,400	-5.51	0.00	OverBought	60.0	56.0	15.9	2,450	2,350	2,375	2,350	2,325	2,425	2,450	2,475	2,425	2,350
MAPI	4,425	59.46	-2.21	Trading	40.6	56.1	146.8	4,775	4,275	4,325	4,225	4,150	4,500	4,575	4,675	4,800	4,275
PGAS	3,825	-14.53	-3.77	Trading	53.3	31.5	(13.4)	4,075	3,825	3,775	3,700	3,625	3,925	4,000	4,075	4,000	3,775
PTBA	21,250	-11.27	-1.16	OverBought	62.5	52.2	81.0	21,500	21,250	21,050	20,800	20,650	21,450	21,600	21,850	21,600	20,950
RALS	830	-3.49	3.75	OverBought	60.0	54.1	11.2	875	820	820	810	800	840	850	860	890	790
SGRO	3,700	13.85	-1.33	Trading	47.4	59.8	60.9	3,725	3,650	3,600	3,500	3,450	3,750	3,800	3,900	3,775	3,550
SMCB	2,100	-5.62	-2.33	Trading	42.9	44.4	(18.4)	2,125	2,100	2,075	2,050	2,025	2,125	2,150	2,175	2,175	2,050
SMGR	9,250	-6.09	-7.50	StrongBuy	10.5	33.4	(60.8)	9,650	9,150	9,200	9,150	9,050	9,350	9,450	9,500	10,000	9,200
SMRA	1,230	13.89	-2.38	Trading	40.6	55.7	32.3	1,320	1,210	1,210	1,190	1,160	1,260	1,290	1,310	1,320	1,210
TINS	2,375	-16.67	-5.00	Trading	40.0	33.4	(27.3)	2,500	2,375	2,325	2,275	2,250	2,400	2,425	2,475	2,500	2,300
TLKM	7,550	-5.63	2.72	TradingSell	94.7	60.9	62.5	7,750	7,300	7,500	7,400	7,350	7,650	7,700	7,800	7,600	7,250
UNTR	26,100	7.41	-5.78	Trading	52.0	55.4	702.4	27,850	25,700	25,850	25,600	25,350	26,350	26,600	26,850	27,750	25,750
UNVR	16,100	0.31	5.57	TradingSell	91.4	74.3	254.3	16,300	15,600	15,800	15,500	15,300	16,300	16,500	16,800	16,150	14,850

S1 = Support 1 S2 = Support 2 S3 = Support 3
 R1 = Resisten 1 R2 = Resisten 2 R2 = Resisten 2
 STO = Stochastic Oscillator
 RSI = Relative Strength Index
 MACD = Moving Average Convergence Divergence
 H-5 = 5 hari sebelumnya

RESEARCH TEAM

Andrian Tanuwijaya	Equity Analyst	(andrian.tanuwijaya@trimegah.com)
Hanel Topada Era Tania	Equity Analyst	(hanel.tania@trimegah.com)
Paul Raymond Widjaja	Equity Analyst	(paul.widjaja@trimegah.com)
T Hedy Arifien	Technical Analyst	(hedy@trimegah.com)
Rovandi	Research Assistant	(rovandi@trimegah.com)

EQUITY CAPITAL MARKET TEAM

Nathanael Benny Prasetyo	Head of Retail ECM	(benny.prasetyo@trimegah.com)
Windra Djulnaily	Pluit, Jakarta	(windra.djulnaily@trimegah.com)
Ariawan Anwar	Artha Graha, Jakarta	(ariawan.anwar@trimegah.com)
Ferry Zabur	Kelapa Gading, Jakarta	(ferry.zabur@trimegah.com)
Wirjawan Joesoef	Mangga Dua, Jakarta	(iwan@trimegah.com)
Lukman Abdul Azis	Kebon Jeruk, Jakarta	(lukman@trimegah.com)
Tutik Suciati	Semarang, Jawa Tengah	(tuty.s@trimegah.com)
Sonny Muljadi	Surabaya, Jawa Timur	(sonny.muljadi@trimegah.com)
Ni Luh Ketut Sri Agustini	Denpasar, Bali	(sri.agustini@trimegah.com)
Philip Fernando Suwandi	Makassar, Sulawesi Selatan	(philip.fs@trimegah.com)
agus.jatmiko	Balikpapan, Kalimantan Timur	(agus.jatmiko@trimegah.com)
Asep Saepudin	Bandung, Jawa Barat	(asep.saepudin@trimegah.com)
Asep Saepudin	Cirebon, Jawa Barat	(asep.saepudin@trimegah.com)
Very Wijaya	Medan, Sumatera Utara	(very.wijaya@trimegah.com)
Tantie Rivi Watie	Pekanbaru, Riau	(tantierw@trimegah.com)
Agus Bambang Suseno	Solo, Jawa Tengah	(agus.suseno@trimegah.com)
Agus Bambang Suseno	Yogyakarta, Jawa Tengah	(agus.suseno@trimegah.com)
Donny Kristanto Setiadi	Palembang, Sumatra Selatan	(donny.kristanto@trimegah.com)
Sonny Muljadi	Malang, Jawa Timur	(sonny.muljadi@trimegah.com)

PT Trimegah Securities Tbk
18th Fl, Artha Graha Building
Jl. Jend. Sudirman Kav. 52-53
Jakarta 12190, INDONESIA
Tel : (6221) 2924 9088 Fax : (6221) 2924 9163

DISCLAIMER

This report has been prepared by PT Trimegah Securities Tbk on behalf of itself and its affiliated companies and is provided for information purposes only. Under no circumstances is it to be used or considered as an offer to sell, or a solicitation of any offer to buy. This report has been produced independently and the forecasts, opinions and expectations contained herein are entirely those of Trimegah Securities.

While all reasonable care has been taken to ensure that information contained herein is not untrue or misleading at the time of publication, Trimegah Securities makes no representation as to its accuracy or completeness and it should not be relied upon as such. This report is provided solely for the information of clients of Trimegah Securities who are expected to make their own investment decisions without reliance on this report. Neither Trimegah Securities nor any officer or employee of Trimegah Securities accept any liability whatsoever for any direct or consequential loss arising from any use of this report or its contents. Trimegah Securities and/or persons connected with it may have acted upon or used the information herein contained, or the research or analysis on which it is based, before publication. Trimegah Securities may in future participate in an offering of the company's equity securities.