

IHSG

3.647,1

9,9

0,27%

Ulisan Pasar



Selective buying pada sejumlah saham unggulan yang terjadi pada perdagangan kemarin mencoba untuk menahan laju tekanan terhadap IHSG yang seyogyanya mengalami pembalikan arah dengan menguji resistensi harga 3.680, sebelum akhirnya membukukan penguatan tipis sebesar 0,27% dan ditutup pada level 3.647 atau dalam kisaran basis support 38,2% Fibonacci Retracement area.

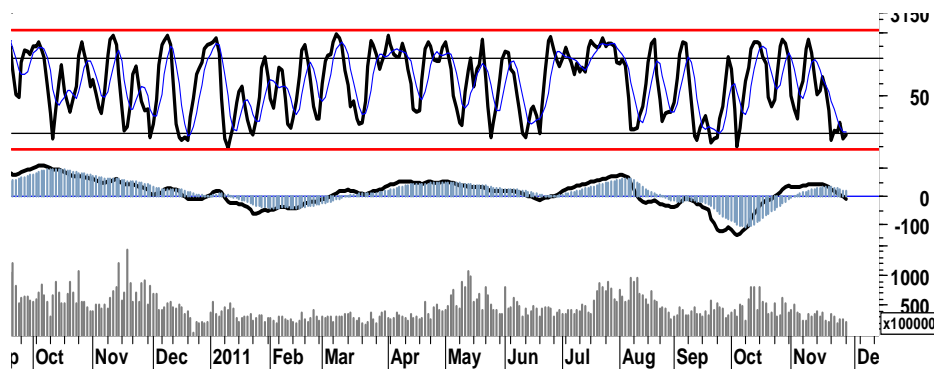
Fokus yang masih tertuju pada gejala politik yang terjadi dalam upaya mengatasi krisis utang di Eropa memberikan ruang pada sejumlah indeks utama Eropa seperti; DAX/CAC bergerak positif 4,6%/5,5 begitu pula pada indeks bursa utama Amerika DJI, S&P500 serta Nasdaq 2,7%, 3,1%, 3,5%.

Diharapkan kondusifnya sentimen pada bursa global serta kembali munculnya minat beli investor asing yang membukukan nilai pembelian bersih sebesar Rp556,3miliar, mampu mendorong IHSG untuk melanjutkan potensi pembalikan arah

yang sempat terganggu untuk menguji penetrasi resistensi 3.680.

Peluang penguatan dalam kondisi IHSG *oversold stochastic*(5D) 19,5, merupakan momentum jangka pendek dengan signal positif yang diharapkan mampu memberikan sedikit warna cerah pada IHSG untuk mendekati resistensi pada level 3.705.

Waspada faktor negatif eksternal dengan menempatkan stop-loss support pada level 3.510 (*fibonacci ratio* 23,6%), apabila terjadi tekanan jual ditengah rawannya sentimen negatif.



| S1 | S2 | R1 | R2 |
|-------|-------|-------|-------|
| 3,619 | 3,591 | 3,676 | 3,705 |

Saham Pilihan

| Saham | Harga (Rp) | Rekomendasi | Stochastic | RSI | BB Top | BB Bottom | S1 | S2 | R1 | R2 |
|-------|------------|-------------|------------|-------|--------|-----------|--------|--------|--------|--------|
| AALI | 20,900 | StrongBuy | 11.48 | 47.55 | 22,050 | 19,850 | 20,800 | 20,650 | 21,250 | 21,400 |
| BBCA | 7,550 | StrongBuy | 9.09 | 39.96 | 7,850 | 7,350 | 7,500 | 7,400 | 7,700 | 7,800 |
| BWPT | 1,140 | StrongBuy | 9.09 | 47.15 | 1,170 | 1,120 | 1,140 | 1,130 | 1,150 | 1,160 |
| ITMG | 37,800 | StrongBuy | 17.08 | 31.84 | 43,100 | 36,100 | 36,200 | 34,550 | 41,250 | 42,900 |
| PTBA | 16,750 | StrongBuy | 10.45 | 43.22 | 17,550 | 16,200 | 16,550 | 16,300 | 17,200 | 17,450 |
| UNTR | 23,800 | StrongBuy | 19.59 | 44.53 | 25,150 | 23,250 | 23,350 | 22,900 | 24,800 | 25,250 |

AAI

20,900

StrongBuy



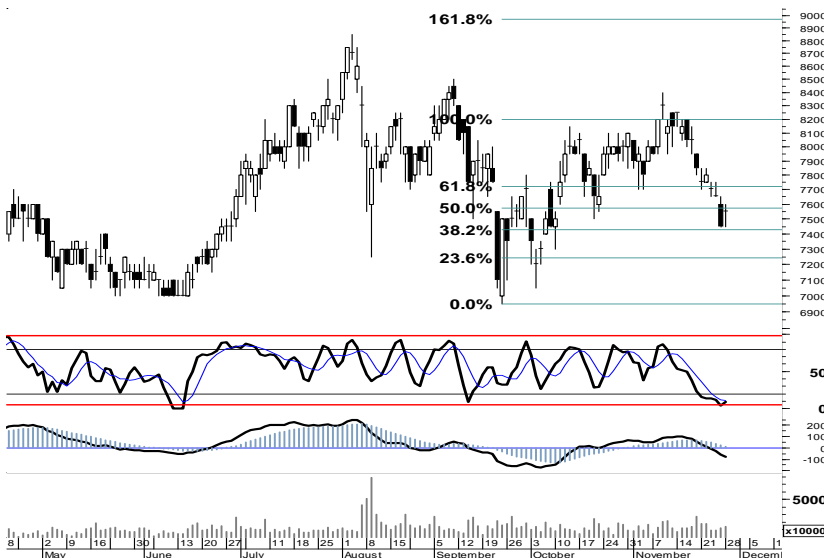
Kondisi *overbought stochastic(5d)* dalam pivot support 20.900 formasi 'v shape', merupakan peluang bagi AAI untuk bergerak positif menguji resistensi harga terdekat 21.250.

| S1 | S2 | R1 | R2 |
|--------|--------|--------|--------|
| 20,800 | 20,650 | 21,250 | 21,400 |

BBCA

7,550

StrongBuy



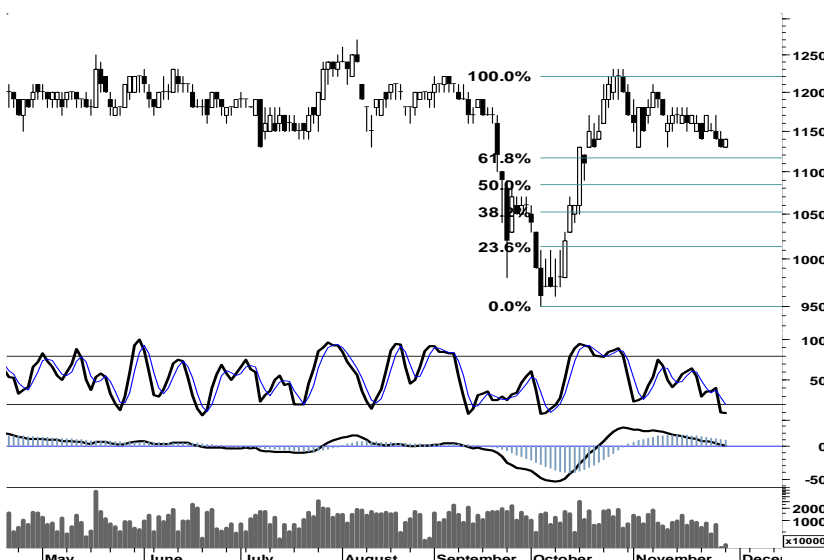
Berada pada kondisi berimbang pivot support 7.550 dan terbatasnya ruang tekanan, telah membuka peluang bagi BBCA untuk bertahan dalam uptrend channel support 7.450 serta menguji resistensi harga terjauh di level 7.800.

| S1 | S2 | R1 | R2 |
|-------|-------|-------|-------|
| 7,500 | 7,400 | 7,700 | 7,800 |

BWPT

1,140

StrongBuy



Perlawanan kekuatan beli yang terjadi di akhir sesi kemarin, telah mendorong BWPT melakukan pembalikan arah pada *support descending triangle* 1.130.

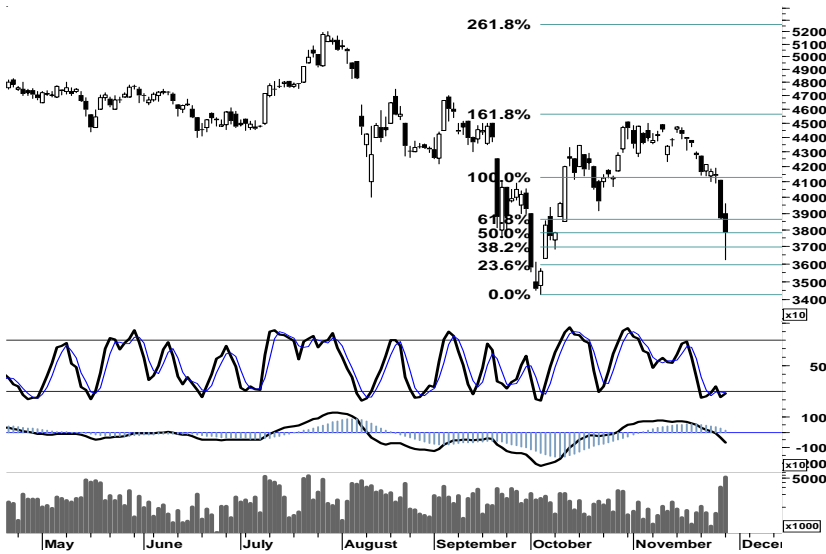
Dengan signal positif *stochastic (5d)* yang muncul, membuka peluang cukup lebar bagi saham tersebut untuk melanjutkan penguatannya serta menguji penetrasi resistensi harga 1.160.

| S1 | S2 | R1 | R2 |
|-------|-------|-------|-------|
| 1,140 | 1,130 | 1,150 | 1,160 |

ITMG

37,800

StrongBuy



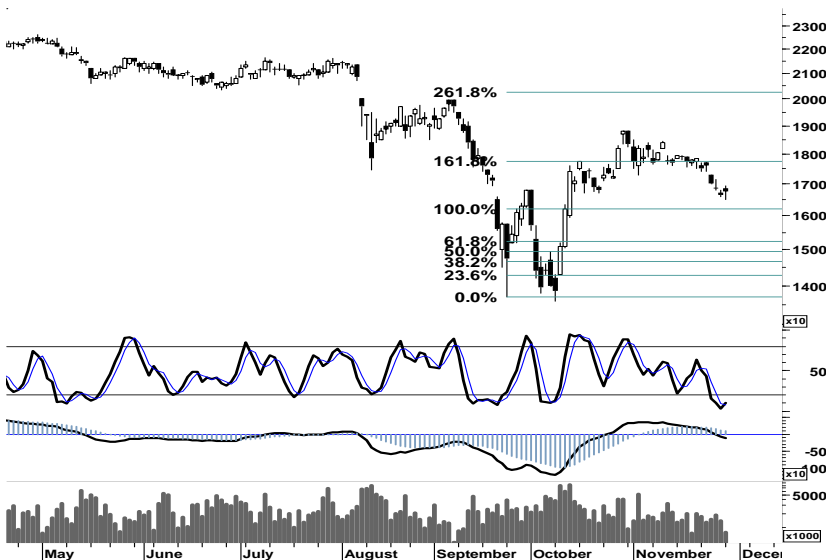
Akumulasi pembelian di akhir sesi perdagangan kemarin, telah membawa ITMG bertumpu pada support *fibonacci retracement* 50% sekaligus ditutup pada area pivot 37.800 yang merupakan peluang bagi saham tersebut untuk kembali pada area positif serta menguji arah resistensi 41.250.

| S1 | S2 | R1 | R2 |
|--------|--------|--------|--------|
| 36,200 | 34,550 | 41,250 | 42,900 |

PTBA

16,750

StrongBuy



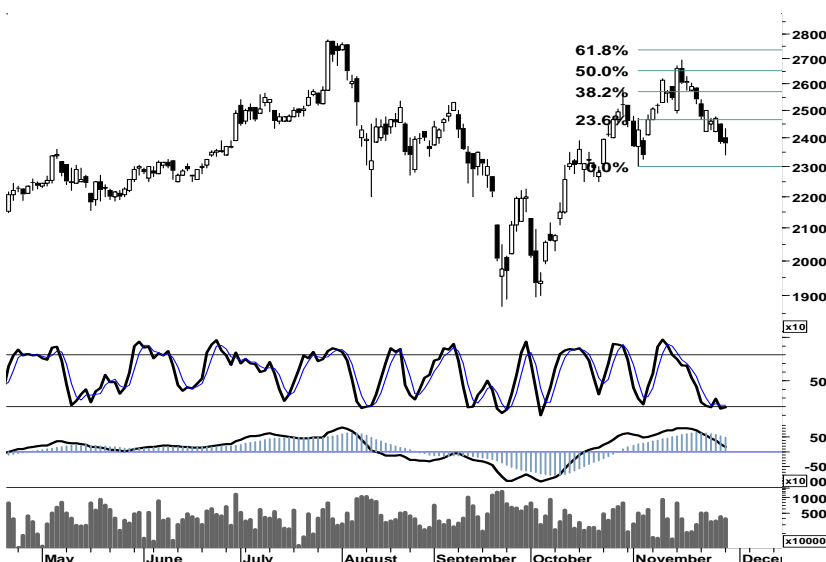
Signal positif *stochastic (5d)* yang muncul, dan terbatasnya ruang tekanan membuka peluang bagi PTBA untuk melanjutkan penguatan serta kembali pada area resistensi 17.750.

| S1 | S2 | R1 | R2 |
|--------|--------|--------|--------|
| 16,550 | 16,300 | 17,200 | 17,450 |

UNTR

23,800

StrongBuy



Sebagaimana saham pilihan kami yang lain, UNTR pun memiliki peluang untuk menguji kembali resistensi pada area fibonacci ratio 23,6% 24.800.

| S1 | S2 | R1 | R2 |
|--------|--------|--------|--------|
| 23,350 | 22,900 | 24,800 | 25,250 |

TRADE DATA

JCI (IHSG) 3,647.0 9.9 0.27%

| | | | |
|-------------------|-------|-------------------------|-------|
| YTD (Rp) | -1.5% | Volume (m) : | 2,388 |
| YTD (USD) | -4.3% | Nilai (Rpbn) : | 3,328 |
| Moving Avg 20day | 3,752 | Mkt Cap (Rptr) : | 3,439 |
| Moving Avg 50day | 3,646 | Market P/E (x) : | 16.2 |
| Moving Avg 200day | 3,745 | Market Div. Yield (%) : | 2.4 |

Indonesia & Sectors +/- (%) YTD (%)

| | | | | |
|----------------|---------|------|-------|--------|
| MSCI Indonesia | 4,538.1 | 17.7 | 0.39 | -0.19 |
| JII | 511.3 | 1.2 | 0.23 | -4.05 |
| LQ45 | 643.1 | 1.7 | 0.27 | -2.76 |
| JAKFIN Index | 474.7 | -0.6 | -0.00 | 1.73 |
| JAKINFR Index | 679.1 | 2.5 | 0.00 | -17.10 |
| JAKMINE Index | 2,488.0 | -0.8 | -0.00 | -24.01 |
| JAKCONS Index | 1,280.8 | 7.7 | 0.01 | 17.01 |
| JAKTRAD Index | 543.8 | 1.9 | 0.00 | 14.71 |
| JAKMIND Index | 1,234.2 | 19.6 | 0.02 | 27.63 |
| JAKBIND Index | 361.5 | -1.9 | -0.01 | -6.65 |
| JAKPROP Index | 203.0 | -0.8 | -0.00 | -0.07 |
| JAKAGRI Index | 2,114.2 | 18.4 | 0.01 | -7.45 |

Commodities +/- (%) YTD (%)

| | | | | |
|--------------------------|----------|------|-------|--------|
| CRB Index | 307.96 | 2.5 | 0.82 | -7.46 |
| Oil & Gas | | | | |
| Crude Oil | 98.21 | 1.4 | 1.49 | 7.47 |
| Natural Gas | 3.36 | -0.2 | -5.03 | -23.63 |
| COAL (Rotterdam) | 111.30 | 1.3 | 1.23 | -15.30 |
| COAL (Amsterdam) | 111.00 | 1.3 | 1.14 | -11.87 |
| COAL (Australia,wk) | 110.85 | -2.8 | -2.42 | -9.44 |
| Industrial Metals | | | | |
| Alumunium | 2,026.00 | 35.0 | 1.76 | -17.62 |
| Nickel | 17,180 | 230 | 1.36 | -30.59 |
| Tin | 20,850 | 150 | 0.72 | -22.49 |
| Prescious Metal | | | | |
| Gold | 1,710.80 | 25.1 | 1.49 | 20.36 |
| Silver | 32.16 | 1.1 | 3.70 | 4.05 |
| Soft Commodities | | | | |
| CPO (Malaysia) | 3,070.00 | 0.0 | 0.00 | -19.51 |
| CPO (Netherlands) | 1,037.50 | 12.5 | 1.22 | -19.26 |
| Rubber | 3,252.12 | 61.6 | 1.93 | -34.88 |
| Corn | 591.75 | 9.3 | 1.59 | -5.92 |
| Wheat | 574.75 | 0.3 | 0.04 | -27.64 |
| Soybeans | 1,121.00 | 14.5 | 1.31 | -19.57 |
| Rice (Indonesia) | 7,750.00 | 0.0 | 0.00 | 9.15 |

Winners

| Stock | Price | (%) | Stock | Price | (%) |
|-------|--------|------|-------|--------|-------|
| IMAS | 13,050 | 6.97 | HRUM | 6,950 | -5.44 |
| KLBF | 3,500 | 3.70 | ITMG | 37,800 | -2.33 |
| PNBN | 650 | 3.17 | BBRI | 6,400 | -2.29 |
| GGRM | 61,550 | 2.58 | BSDE | 880 | -2.22 |
| PGAS | 2,950 | 1.72 | CPIN | 2,275 | -2.15 |
| ADRO | 1,900 | 1.60 | MNCN | 1,100 | -1.79 |
| ASII | 69,150 | 1.54 | GEMS | 2,750 | -1.79 |
| BBNI | 3,700 | 1.37 | UNVR | 17,550 | -1.68 |
| BBCA | 7,550 | 1.34 | BDMN | 4,375 | -1.13 |
| BUMI | 2,025 | 1.25 | BMRI | 6,400 | -0.78 |

Losers

| Stock | Price | (%) | Stock | Price | (%) |
|-------|--------|-------|-------|--------|-------|
| HRUM | 6,950 | -5.44 | ITMG | 37,800 | -2.33 |
| BBRI | 6,400 | -2.29 | BSDE | 880 | -2.22 |
| CPIN | 2,275 | -2.15 | MNCN | 1,100 | -1.79 |
| GEMS | 2,750 | -1.79 | UNVR | 17,550 | -1.68 |
| UNVR | 17,550 | -1.68 | BDMN | 4,375 | -1.13 |
| BDMN | 4,375 | -1.13 | BMRI | 6,400 | -0.78 |

Regional Indices +/- (%) YTD (%)

| | | | | | |
|----------------------|-----------|----------|---------|------|--------|
| MXWO | MSCI Word | 1,132.4 | 34.5 | 3.15 | -11.54 |
| SPX | S&P 500 | 1,192.6 | 33.9 | 2.92 | -5.18 |
| US | | | | | |
| Dow Jones Industrial | | 11,523.0 | 291.2 | 2.59 | -0.47 |
| Nasdaq | US | 2,527.3 | 85.8 | 3.52 | -4.73 |
| Europe | | | | | |
| EURO 50 | Europe | 229.9 | 8.3 | 3.75 | -16.66 |
| FTSE | London | 5,312.8 | 148.1 | 2.87 | -9.95 |
| DAX | Jerma | 5,745.3 | 252.5 | 4.60 | -16.91 |
| CAC | France | 3,012.9 | 156.0 | 5.46 | -20.81 |
| SMI | Swiss | 5,522.7 | 127.1 | 2.35 | -14.19 |
| BRIC | | | | | |
| BOVESPA | Brazil | 56,017.4 | 1,122.9 | 2.05 | -19.17 |
| MICEX | Russia | 1,466.2 | 55.4 | 3.93 | -13.14 |
| SENSEX | India | 16,167.1 | 471.7 | 3.01 | -21.17 |
| NIFTY | India | 4,851.3 | 141.3 | 3.00 | -20.92 |
| SHCOMP | China | 2,383.0 | 2.8 | 0.12 | -15.14 |
| SZCOMP | China | 1,020.5 | 0.8 | 0.08 | -20.94 |

Developed ASIA

| | | | | | |
|--------|-----------|----------|-------|------|--------|
| Nikkei | Japan | 8,287.5 | 127.5 | 1.56 | -18.98 |
| TPX | Japan | 715.7 | 9.1 | 1.29 | -20.37 |
| HIS | Hong kong | 18,037.8 | 348.3 | 1.97 | -21.70 |
| KOSPI | S.Korea | 1,815.3 | 38.9 | 2.19 | -11.49 |
| TAIEX | Taiwan | 6,898.8 | 114.3 | 1.68 | -23.11 |
| FSSTI | Singapore | 2,694.4 | 50.5 | 1.91 | -15.54 |

ASEAN

| | | | | | |
|---------|-------------|---------|-------|-------|--------|
| SET | Thailand | 984.2 | 17.0 | 1.76 | -4.70 |
| PCOMP | Philippines | 4,227.9 | -33.7 | -0.79 | 0.64 |
| KLCI | Malaysia | 1,431.6 | 0.0 | 0.00 | -5.75 |
| VNINDEX | Vietnam | 383.3 | -0.0 | -0.01 | -20.91 |

Currency +/- (%) YTD (%)

| | | | | | |
|--------|----------------|---------|--------|-------|-------|
| EURUSD | Euro | 1.332 | 0.008 | 0.61 | -0.48 |
| GBPUSD | United Kingdom | 1.551 | 0.007 | 0.46 | -0.65 |
| USDCHF | Switzerland | 0.922 | -0.008 | -0.82 | -1.37 |
| USDCAD | Canada | 1.034 | -0.013 | -1.21 | 3.62 |
| AUDUSD | Australia | 0.991 | 0.019 | 2.00 | -3.21 |
| NZDUSD | New Zealand | 0.755 | 0.015 | 1.97 | -3.22 |
| USDJPY | Japan | 78.0 | 0.250 | 0.32 | -3.87 |
| USDCNY | China | 6.385 | 0.006 | 0.10 | -3.36 |
| USDHKD | Hongkong | 7.795 | -0.001 | -0.01 | 0.28 |
| USDSGD | Singapore | 1.302 | -0.011 | -0.86 | 1.45 |
| Rupiah | Indonesia | 9,118.0 | 60.000 | 0.66 | 1.36 |

Value (Rpbn) Volume (Lot) Freq (x)

| | | | | | |
|------|---------|------|---------|------|-------|
| BMRI | 368,003 | TMPI | 517,608 | TMPI | 6,701 |
| AMRT | 234,574 | ENRG | 348,884 | BMRI | 4,352 |
| HRUM | 195,297 | BIPI | 167,779 | BJBR | 3,473 |
| ITMG | 194,234 | PNLF | 167,301 | HRUM | 3,228 |
| BBRI | 150,996 | ADRO | 158,688 | ITMG | 3,065 |
| ADRO | 150,258 | AMRT | 117,287 | IGAR | 2,767 |
| ASII | 114,895 | BMRI | 114,805 | CPIN | 2,462 |
| BBCA | 107,082 | IGAR | 97,153 | BBRI | 2,368 |
| BUMI | 81,542 | BUMI | 80,976 | ADRO | 2,031 |
| CPIN | 76,805 | MYRX | 75,367 | AKRA | 1,688 |

| Code | Last | Ytd Chg(%) | H-5 Chg (%) | Rekomendasi | STO | RSI | MACD | Bollinger Band | | Support | | | Resistance | | | H-5 | |
|------|--------|------------|-------------|-------------|------|------|---------|----------------|--------|---------|--------|--------|------------|--------|--------|---------|--------|
| | | | | | | | | Top | Bottom | 1 | 2 | 3 | 1 | 2 | 3 | Highest | Lowest |
| AALI | 20,900 | -22.01 | -3.02 | StrongBuy | 11.5 | 47.5 | 271.1 | 22,050 | 19,850 | 20,800 | 20,650 | 20,500 | 21,100 | 21,250 | 21,400 | 22,600 | 20,500 |
| ACES | 3,800 | 33.33 | -0.65 | OverSold | 36.4 | 61.8 | 100.8 | 3,900 | 3,650 | 3,675 | 3,550 | 3,475 | 3,875 | 3,950 | 4,075 | 3,900 | 3,600 |
| ADRO | 1,900 | -28.97 | 1.06 | Trading | 48.6 | 46.1 | (4.8) | 1,940 | 1,870 | 1,880 | 1,860 | 1,840 | 1,920 | 1,940 | 1,960 | 1,940 | 1,830 |
| AISA | 680 | -12.82 | 0.00 | OverBought | 76.9 | 50.2 | 4.3 | 690 | 675 | 670 | 655 | 650 | 690 | 695 | 710 | 690 | 650 |
| ANTM | 1,610 | -34.95 | -1.23 | OverSold | 29.2 | 43.7 | (7.7) | 1,660 | 1,580 | 1,600 | 1,580 | 1,560 | 1,640 | 1,660 | 1,680 | 1,660 | 1,580 |
| ASII | 69,150 | 27.11 | 2.22 | OverBought | 63.8 | 52.9 | 546.9 | 70,050 | 67,550 | 68,900 | 68,650 | 68,300 | 69,500 | 69,850 | 70,100 | 69,950 | 67,000 |
| BBCA | 7,550 | 17.05 | -2.58 | StrongBuy | 9.1 | 40.0 | (63.7) | 7,850 | 7,350 | 7,500 | 7,400 | 7,350 | 7,650 | 7,700 | 7,800 | 7,850 | 7,450 |
| BBNI | 3,700 | -2.63 | 1.37 | Trading | 56.0 | 43.7 | (35.9) | 3,750 | 3,625 | 3,600 | 3,500 | 3,425 | 3,775 | 3,850 | 3,950 | 3,750 | 3,550 |
| BBRI | 6,400 | 23.67 | -1.54 | OverSold | 27.8 | 43.5 | 29.6 | 6,800 | 6,350 | 6,300 | 6,150 | 5,950 | 6,650 | 6,850 | 7,000 | 6,750 | 6,350 |
| BDMN | 4,375 | -20.45 | -1.69 | Accumulate | 36.1 | 33.1 | (110.5) | 4,500 | 4,325 | 4,300 | 4,200 | 4,125 | 4,475 | 4,550 | 4,650 | 4,550 | 4,275 |
| BISI | 850 | -54.55 | -6.59 | OverSold | 17.4 | 28.4 | (28.4) | 925 | 830 | 830 | 810 | 780 | 880 | 910 | 930 | 930 | 840 |
| BMRI | 6,400 | -0.78 | -2.29 | OverSold | 29.6 | 41.2 | (40.1) | 6,850 | 6,250 | 6,300 | 6,150 | 6,000 | 6,600 | 6,750 | 6,900 | 6,800 | 6,300 |
| BSDE | 880 | 0.00 | -4.35 | OverSold | 26.1 | 41.7 | 1.9 | 930 | 865 | 870 | 855 | 840 | 900 | 915 | 930 | 960 | 870 |
| BTEL | 260 | 10.64 | -1.89 | OverBought | 73.3 | 36.5 | (7.3) | 268 | 260 | 255 | 250 | 245 | 265 | 270 | 275 | 270 | 240 |
| BUMI | 2,025 | -35.20 | -2.41 | OverSold | 23.7 | 40.4 | (40.7) | 2,125 | 1,950 | 2,000 | 1,975 | 1,950 | 2,075 | 2,100 | 2,125 | 2,175 | 1,980 |
| BWPT | 1,140 | -12.98 | 0.00 | StrongBuy | 9.1 | 47.2 | 3.2 | 1,170 | 1,120 | 1,140 | 1,130 | 1,130 | 1,150 | 1,150 | 1,160 | 1,170 | 1,130 |
| ELTY | 106 | -34.16 | -2.75 | Accumulate | 26.1 | 38.4 | (2.2) | 109 | 104 | 105 | 103 | 102 | 108 | 109 | 111 | 111 | 104 |
| EXCL | 4,550 | -13.33 | -3.19 | Accumulate | 20.5 | 33.4 | (129.6) | 4,725 | 4,475 | 4,500 | 4,450 | 4,375 | 4,625 | 4,700 | 4,750 | 4,800 | 4,500 |
| GGRM | 61,550 | 49.94 | 1.74 | Trading | 42.1 | 57.6 | 997.3 | 62,200 | 59,700 | 60,700 | 59,850 | 59,200 | 62,200 | 62,850 | 63,700 | 62,000 | 60,000 |
| HEXA | 8,200 | 13.10 | 0.61 | Trading | 59.1 | 53.4 | 84.5 | 8,300 | 7,950 | 8,150 | 8,100 | 8,050 | 8,250 | 8,300 | 8,350 | 8,250 | 7,900 |
| HRUM | 6,950 | -26.46 | -7.95 | Accumulate | 21.6 | 33.0 | (75.9) | 7,950 | 6,800 | 6,700 | 6,450 | 6,200 | 7,200 | 7,450 | 7,700 | 7,750 | 6,700 |
| INCO | 3,075 | -38.19 | -3.91 | Accumulate | 20.6 | 38.8 | (43.6) | 3,200 | 3,025 | 3,025 | 2,975 | 2,925 | 3,125 | 3,175 | 3,225 | 3,325 | 3,000 |
| INDF | 4,675 | -5.56 | -2.09 | Accumulate | 22.2 | 36.8 | (117.4) | 4,800 | 4,625 | 4,600 | 4,525 | 4,450 | 4,750 | 4,825 | 4,900 | 4,850 | 4,600 |
| INDY | 2,100 | -58.82 | -4.55 | Accumulate | 30.8 | 34.6 | (110.4) | 2,225 | 2,025 | 2,050 | 1,975 | 1,950 | 2,150 | 2,175 | 2,250 | 2,250 | 2,000 |
| INTP | 14,550 | -9.35 | -0.68 | OverSold | 26.2 | 45.8 | 26.2 | 15,250 | 14,250 | 14,450 | 14,300 | 14,100 | 14,800 | 15,000 | 15,150 | 15,250 | 14,400 |
| ISAT | 5,150 | -5.50 | 0.00 | OverSold | 28.6 | 48.2 | 16.5 | 5,250 | 5,050 | 5,150 | 5,150 | 5,100 | 5,200 | 5,250 | 5,250 | 5,350 | 5,050 |
| ITMG | 37,800 | -30.39 | -9.13 | StrongBuy | 17.1 | 31.8 | (531.4) | 43,100 | 36,100 | 36,200 | 34,550 | 32,850 | 39,550 | 41,250 | 42,900 | 42,700 | 36,250 |
| JSMR | 3,775 | 6.34 | -1.31 | StrongBuy | 17.6 | 43.1 | (8.6) | 3,900 | 3,725 | 3,750 | 3,725 | 3,675 | 3,825 | 3,875 | 3,900 | 3,875 | 3,750 |
| KLBF | 3,500 | 5.26 | 2.94 | Trading | 50.0 | 57.3 | 9.4 | 3,525 | 3,325 | 3,425 | 3,350 | 3,300 | 3,550 | 3,600 | 3,675 | 3,500 | 3,350 |
| LSIP | 2,350 | -7.48 | 1.08 | Trading | 50.0 | 60.6 | 70.4 | 2,400 | 2,325 | 2,325 | 2,300 | 2,275 | 2,375 | 2,400 | 2,425 | 2,375 | 2,275 |
| MAPI | 5,350 | 92.79 | 0.00 | Trading | 43.5 | 57.9 | 126.8 | 5,450 | 5,150 | 5,300 | 5,200 | 5,150 | 5,450 | 5,500 | 5,600 | 5,500 | 5,100 |
| PGAS | 2,950 | -34.08 | -2.48 | OverSold | 32.0 | 47.7 | 21.3 | 3,025 | 2,875 | 2,900 | 2,850 | 2,825 | 2,975 | 3,000 | 3,050 | 3,050 | 2,850 |
| PTBA | 16,750 | -30.06 | -4.29 | StrongBuy | 10.4 | 43.2 | (31.8) | 17,550 | 16,200 | 16,550 | 16,300 | 16,100 | 17,000 | 17,200 | 17,450 | 17,700 | 16,500 |
| RALS | 590 | -31.40 | -3.28 | Trading | 50.0 | 41.4 | (20.2) | 610 | 555 | 580 | 565 | 560 | 600 | 605 | 620 | 620 | 540 |
| SGRO | 2,975 | -8.46 | -0.83 | OverSold | 35.3 | 47.6 | 8.8 | 3,050 | 2,900 | 2,950 | 2,900 | 2,875 | 3,025 | 3,050 | 3,100 | 3,050 | 2,900 |
| SMCB | 1,840 | -17.30 | 1.10 | Trading | 57.7 | 46.5 | (6.3) | 1,850 | 1,810 | 1,840 | 1,830 | 1,830 | 1,850 | 1,850 | 1,860 | 1,870 | 1,780 |
| SMGR | 8,850 | -10.15 | -0.56 | OverSold | 31.4 | 46.8 | 8.8 | 9,100 | 8,650 | 8,750 | 8,650 | 8,550 | 8,950 | 9,050 | 9,150 | 9,150 | 8,650 |
| SMRA | 1,010 | -6.48 | -8.18 | StrongBuy | 13.8 | 32.5 | (17.3) | 1,090 | 980 | 1,000 | 980 | 970 | 1,030 | 1,040 | 1,060 | 1,100 | 990 |
| TINS | 1,720 | -39.65 | -2.27 | StrongBuy | 15.6 | 35.4 | (35.7) | 1,770 | 1,690 | 1,710 | 1,700 | 1,680 | 1,740 | 1,760 | 1,770 | 1,810 | 1,700 |
| TLKM | 7,300 | -8.75 | -2.01 | OverSold | 29.4 | 43.1 | 5.7 | 7,600 | 7,200 | 7,200 | 7,100 | 7,000 | 7,400 | 7,500 | 7,600 | 7,550 | 7,200 |
| UNTR | 23,800 | -2.06 | -3.84 | StrongBuy | 19.6 | 44.5 | 223.0 | 25,150 | 23,250 | 23,350 | 22,900 | 22,400 | 24,300 | 24,800 | 25,250 | 25,400 | 23,400 |
| UNVR | 17,550 | 9.35 | 8.33 | StrongSell | 91.2 | 70.0 | 405.0 | 18,250 | 16,900 | 16,950 | 16,350 | 15,900 | 18,000 | 18,450 | 19,050 | 17,850 | 16,000 |

S1 = Support 1 S2 = Support 2 S3 = Support 3
 R1 = Resisten 1 R2 = Resisten 2 R2 = Resisten 2
 STO = Stochastic Oscillator
 RSI = Relative Strength Index
 MACD = Moving Average Convergence Divergence
 H-5 = 5 hari sebelumnya

RESEARCH TEAM

| | | |
|-------------------------------|--------------------|-----------------------------------|
| Andrian Tanuwijaya | Equity Analyst | (andrian.tanuwijaya@trimegah.com) |
| Hanel Topada Era Tania | Equity Analyst | (hanel.tania@trimegah.com) |
| Paul Raymond Widjaja | Equity Analyst | (paul.widjaja@trimegah.com) |
| Michele Gabriela | Equity Analyst | (michele.gabriela@trimegah.com) |
| T Hedy Arifien | Technical Analyst | (hedy@trimegah.com) |
| Rovandi | Research Assistant | (rovandi@trimegah.com) |

EQUITY CAPITAL MARKET TEAM

| | | |
|----------------------------------|------------------------------|---------------------------------|
| Nathanael Benny Prasetyo | Head of Retail ECM | (benny.prasetyo@trimegah.com) |
| Windra Djulnaily | Pluit, Jakarta | (windra.djulnaily@trimegah.com) |
| Ariawan Anwar | Artha Graha, Jakarta | (ariawan.anwar@trimegah.com) |
| Ferry Zabur | Kelapa Gading, Jakarta | (ferry.zabur@trimegah.com) |
| Wirjawan Joesoef | Mangga Dua, Jakarta | (iwan@trimegah.com) |
| Lukman Abdul Azis | Kebon Jeruk, Jakarta | (lukman@trimegah.com) |
| Untung Wijaya | Semarang, Jawa Tengah | (untung.wijaya@trimegah.com) |
| Sonny Muljadi | Surabaya, Jawa Timur | (sonny.muljadi@trimegah.com) |
| Ni luh Ketut Sri Agustini | Denpasar, Bali | (sri.agustini@trimegah.com) |
| Philip Fernando Suwandi | Makassar, Sulawesi Selatan | (philip.fs@trimegah.com) |
| agus.jatmiko | Balikpapan, Kalimantan Timur | (agus.jatmiko@trimegah.com) |
| Asep Saepudin | Bandung, Jawa Barat | (asep.saepudin@trimegah.com) |
| Ariffianto | Cirebon, Jawa Barat | (ariffianto@trimegah.com) |
| Very Wijaya | Medan, Sumatera Utara | (very.wijaya@trimegah.com) |
| Tantie Rivi Watie | Pekanbaru, Riau | (tantierw@trimegah.com) |
| Agus Bambang Suseno | Solo, Jawa Tengah | (agus.suseno@trimegah.com) |
| Untung Wijaya | Yogyakarta, Jawa Tengah | (untung.wijaya@trimegah.com) |
| Donny Kristanto Setiadi | Palembang, Sumatra Selatan | (donny.kristanto@trimegah.com) |
| Rr. Putri Ayu Erikusuma | Malang, Jawa Timur | (putri.ayu@trimegah.com) |

PT Trimegah Securities Tbk
18th Fl, Artha Graha Building
Jl. Jend. Sudirman Kav. 52-53
Jakarta 12190, INDONESIA
Tel : (6221) 2924 9088 Fax : (6221) 2924 9163

DISCLAIMER

This report has been prepared by PT Trimegah Securities Tbk on behalf of itself and its affiliated companies and is provided for information purposes only. Under no circumstances is it to be used or considered as an offer to sell, or a solicitation of any offer to buy. This report has been produced independently and the forecasts, opinions and expectations contained herein are entirely those of Trimegah Securities.

While all reasonable care has been taken to ensure that information contained herein is not untrue or misleading at the time of publication, Trimegah Securities makes no representation as to its accuracy or completeness and it should not be relied upon as such. This report is provided solely for the information of clients of Trimegah Securities who are expected to make their own investment decisions without reliance on this report. Neither Trimegah Securities nor any officer or employee of Trimegah Securities accept any liability whatsoever for any direct or consequential loss arising from any use of this report or its contents. Trimegah Securities and/or persons connected with it may have acted upon or used the information herein contained, or the research or analysis on which it is based, before publication. Trimegah Securities may in future participate in an offering of the company's equity securities.