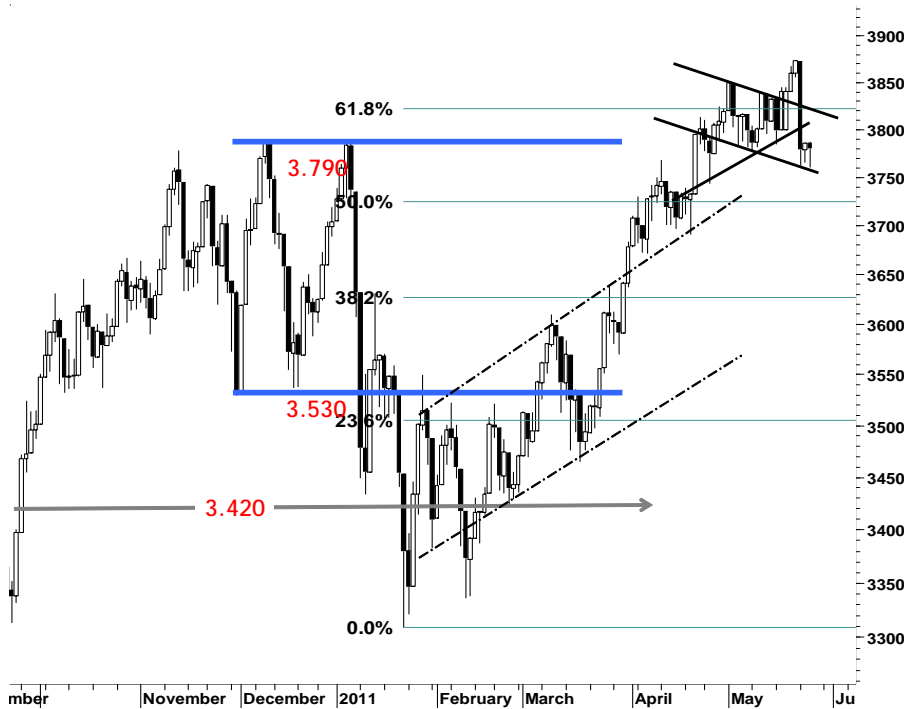


IHSG

3.780,2

-5,8 -0,15%

Ulusan Pasar



Melemahnya indeks pada bursa-bursa utama regional membayangi pergerakan IHSG pada perdagangan kemarin, yang diikuti oleh tercatatnya nilai penjualan bersih asing sebesar Rp259miliar serta berlanjutnya tekanan pelemahan terhadap saham-saham unggulan dan favorit. IHSG melemah menguji arah support 3.750 dengan swing negatif mencapai level terendah 3.761, yang kemudian ditutup tertahan di area negatif pada level 3.780.

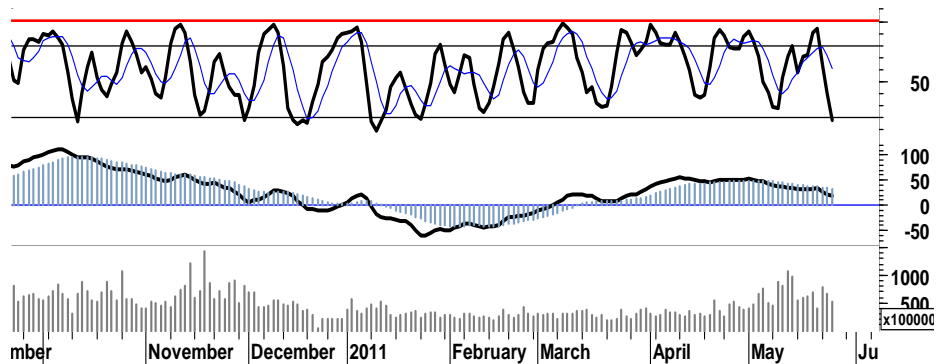
Lagging indicator yang masih cukup lebar dibandingkan leading indicator yang ada, menandakan IHSG masih diselimuti oleh kekhawatiran serta kecenderungan para pelaku pasar yang lebih memilih 'wait and see' terhadap sentimen perlambatan pertumbuhan ekonomi dunia dan krisis utang di Eropa.

Untuk saat ini, IHSG masih cukup kuat bertumpu pada basis support 3.750. Dan untuk tetap berada dalam uptrend-channel, IHSG signal pembalikan arah diharapkan muncul saat

menguji kekuatan support yang berada dalam interval harga 3.720 - 3.750.

Dengan berharap pada technical rebound sejumlah saham-saham unggulan yang telah mengalami tekanan cukup dalam, seperti ASII, BBCA, BBRI, BMRI dan UNTR.

Setidaknya akumulasi pembelian pada saham-saham tersebut, dapat dilakukan dengan mencermati peluang Buy on Weakness di masih-masing interval support pada area oversold yang ada.



S1	S2	R1	R2
3,765	3,750	3,790	3,800

Saham Pilihan

Saham	Harga (Rp)	Rekomendasi	Stochastic	RSI	BB Top	BB Bottom	S1	S2	R1	R2
ASII	58,100	StrongBuy	13.67	52.24	62,250	55,900	57,600	57,050	58,650	59,200
BBRI	6,150	OverSold	22.22	48.15	6,650	5,950	6,100	6,050	6,250	6,300
INDF	5,350	OverSold	20.00	42.60	5,750	5,100	5,300	5,200	5,500	5,600
INDY	4,100	OverSold	30.30	51.76	4,225	3,925	4,025	3,925	4,225	4,325
PGAS	4,000	Trading	43.75	48.93	4,050	3,900	3,975	3,950	4,050	4,075
TLKM	7,700	Trading	47.06	59.27	7,750	7,550	7,650	7,600	7,800	7,850



Ruang tekanan pelemahan yang semakin sempit, merupakan peluang akumulasi untuk mengantisipasi pembalikan arah ASII.

Indikasi pola hammer yang terbentuk, membuka peluang bagi ASII untuk kembali resistensi 59.300.

S1	S2	R1	R2
57,600	57,050	58,650	59,200



Ditutup di kisaran pivot support 6.150, menempatkan BBRI pada kondisi berimbang.

Indikasi morning star yang muncul kemarin, membuka ruang bagi BBRI untuk bergerak positif menuju resistensi 6.250.

S1	S2	R1	R2
6,100	6,050	6,250	6,300



Support kuat 5.250 pada area oversold stochastic, merupakan momentum bagi INDF untuk kembali pada area 5.500.

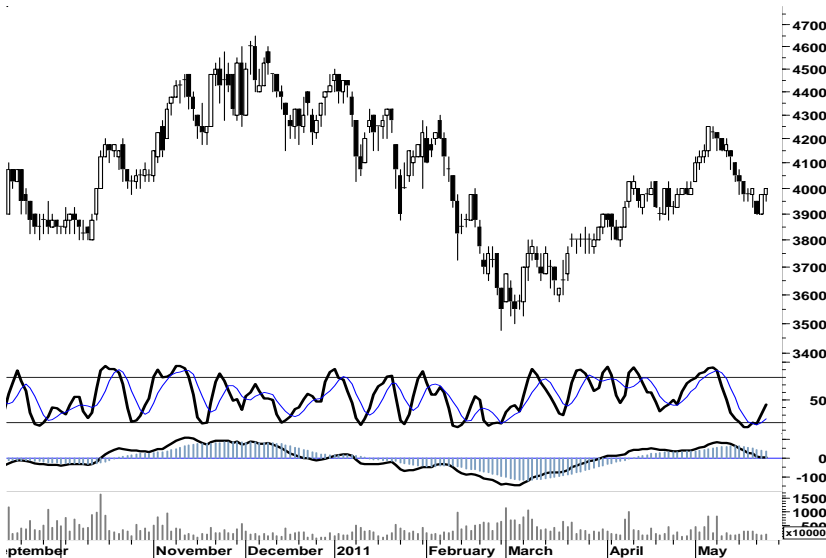
S1	S2	R1	R2
5,300	5,200	5,500	5,600



Untuk dapat keluar dari area konsolidasi dengan memanfaatkan indikasi signal positif stochastic, INDY harus mampu menembus resistensi 4.250.

Setidaknya Indikasi positif golden-cross pada stochastic, membuka peluang bagi INDY untuk menguji interval 4.025 - 4.300.

S1	S2	R1	R2
4,025	3,925	4,225	4,325



Golden Cross 2 hari lalu pada indicator stochastic, telah membawa PGAS keluar dari area negatif dengan basis support 3.900.

Signal positif leading indicator, membuka peluang bagi PGAS untuk melanjutkan rally menuju resisten 4.075.

S1	S2	R1	R2
3,975	3,950	4,050	4,075



Indikasi golden-cross diharapkan mampu mendorong TLKM melanjutkan perjalanan menguji penetrasi 7.800.

S1	S2	R1	R2
7,650	7,600	7,800	7,850

TRADE DATA

JCI (IHSG) 3,780.2 -5.8 -0.15%

YTD (Rp)	2.1%	Volume (m) :	8,527
YTD (USD)	7.1%	Nilai (Rpbn) :	4,014
Moving Avg 20day	3,815	Mkt Cap (Rptr) :	3,367
Moving Avg 50day	3,724	Market P/E (x) :	16.2
Moving Avg 200day	3,542	Market Div. Yield (%) :	2.4

Indonesia & Sectors +/- (%) YTD (%)

MSCI Indonesia	4,688.7	-0.9	-0.02	3.13
JII	524.4	-1.0	-0.20	-1.60
LQ45	672.4	-1.1	-0.17	1.67
JAKFIN Index	490.8	-3.8	-0.01	5.17
JAKINFR Index	792.1	3.7	0.00	-3.31
JAKMINE Index	3,219.8	13.4	0.00	-1.66
JAKCONS Index	1,117.0	1.5	0.00	2.04
JAKTRAD Index	492.6	-2.3	-0.00	3.91
JAKMIND Index	1,053.3	-2.9	-0.00	8.93
JAKBIND Index	400.1	-0.9	-0.00	3.31
JAKPROP Index	205.3	0.0	0.00	1.10
JAKAGRI Index	2,297.9	-13.1	-0.01	0.60

Commodities +/- (%) YTD (%)

CRB Index	344.44	5.3	1.57	3.50
Oil & Gas				
Crude Oil	101.32	1.7	1.74	10.88
Natural Gas	4.38	0.0	0.78	-0.59
COAL (Rotterdam)	120.50	-0.8	-0.70	-8.30
COAL (Amsterdam)	122.60	1.9	1.57	-2.66
COAL (Australia,wk)	117.10	0.0	0.00	-4.33
Industrial Metals				
Aluminium	2,521.8	35.5	1.43	2.54
Nickel	23,400	505	2.21	-5.45
Tin	27,700	450	1.65	2.97
Precious Metal				
Gold	1,526.70	3.4	0.22	7.41
Silver	37.64	1.5	4.19	21.78
Soft Commodities				
CPO (Malaysia)	3,515.00	55.0	1.59	-7.84
CPO (Netherland)	1,175.00	17.5	1.51	-8.56
Rubber	4,989.63	65.9	1.34	-0.08
Corn	742.25	9.0	1.23	18.00
Wheat	796.50	16.8	2.15	0.28
Soybeans	1,377.00	4.8	0.35	-1.20
Rice (Indonesia)	6,750.00	0.0	0.00	-4.93

Winners

Stock	Price	(%)	Stock	Price	(%)
AMRT	3,500	9.38	DSSA	13,400	-13.55
BORN	1,530	2.68	AALI	22,750	-2.57
SMAR	6,950	2.21	ANTM	2,100	-2.33
ADRO	2,375	2.15	BMRI	6,950	-2.11
BUMI	3,400	1.49	BNII	590	-1.67
BYAN	17,100	1.18	INCO	4,800	-1.03
INDF	5,350	0.94	BDMN	5,850	-0.85
BBCA	7,100	0.71	BBRI	6,150	-0.81
TLKM	7,700	0.65	UNTR	22,000	-0.68
PGAS	4,000	0.63	BBNI	3,775	-0.66

Losers

Stock	Price	(%)	Stock	Price	(%)
DSSA	13,400	-13.55	AALI	22,750	-2.57
AALI	22,750	-2.57	ANTM	2,100	-2.33
ANTM	2,100	-2.33	BMRI	6,950	-2.11
BMRI	6,950	-2.11	BNII	590	-1.67
BNII	590	-1.67	INCO	4,800	-1.03
INCO	4,800	-1.03	BDMN	5,850	-0.85
BDMN	5,850	-0.85	BBRI	6,150	-0.81
BBRI	6,150	-0.81	UNTR	22,000	-0.68
UNTR	22,000	-0.68	BBNI	3,775	-0.66
BBNI	3,775	-0.66			

Regional Indices +/- (%) YTD (%)

MXWO	MSCI Word	1,320.3	4.5	0.34	3.14
SPX	S&P 500	1,320.5	4.2	0.32	5.00
US					
Dow Jones Industrial		12,394.7	38.5	0.31	7.06
Nasdaq	US	2,761.4	15.2	0.55	4.09
Europe					
EURO 50	Europe	277.4	2.0	0.72	0.57
FTSE	London	5,870.1	11.7	0.20	-0.51
DAX	Jerman	7,170.9	20.3	0.28	3.71
CAC	France	3,929.0	12.1	0.31	3.26
SMI	Swiss	6,464.6	10.3	0.16	0.44
BRIC					
BOVESPA	Brazil	63,388.4	51.7	0.08	-8.54
MICEX	Russia	1,614.9	16.0	1.00	-4.33
SENSEX	India	17,847.2	-164.7	-0.91	-12.98
NIFTY	India	5,349.0	-45.9	-0.85	-12.81
SHCOMP	China	2,741.7	-25.3	-0.91	-2.36
SZCOMP	China	1,134.2	-16.7	-1.45	-12.14

Developed ASIA

Nikkei	Japan	9,422.9	-54.3	-0.57	-7.88
TPX	Japan	817.7	-1.4	-0.17	-9.02
HIS	Hong kong	22,747.3	16.5	0.07	-1.25
KOSPI	S.Korea	2,035.9	-25.9	-1.26	-0.74
TAIEX	Taiwan	8,727.1	-29.5	-0.34	-2.74
FSSTI	Singapore	3,118.7	5.6	0.18	-2.24

ASEAN

SET	Thailand	1,055.5	-8.7	-0.82	2.21
PCOMP	Philippines	4,191.0	-36.1	-0.85	-0.24
KLCI	Malaysia	1,533.6	1.5	0.09	0.97
VNINDEX	Vietnam	386.4	-16.2	-4.03	-20.28

Currency +/- (%) YTD (%)

EURUSD	Euro	1.409	-0.001	-0.09	5.26
GBPUSD	United Kingdom	1.627	0.009	0.57	4.24
USDCHF	Switzerland	0.873	-0.007	-0.84	-6.69
USDCAD	Canada	0.977	0.001	0.07	-2.06
AUDUSD	Australia	1.053	-0.003	-0.26	2.92
NZDUSD	New Zealand	0.799	0.002	0.31	2.37
USDJPY	Japan	82.0	0.020	0.02	1.05
USDCNY	China	6.494	-0.003	-0.05	-1.71
USDHKD	Hongkong	7.784	0.007	0.09	0.15
USDSGD	Singapore	1.248	0.000	0.04	-2.77
Rupiah	Indonesia	8,603.0	32.000	0.37	-4.37

Value

Value	(Rpbn)	Volume	(Lot)	Freq	(x)
BUMI	267,495	BNBR	1,519,217	LPLI	12,479
BBRI	238,146	ENRG	1,513,449	BRNA	7,787
BMRI	200,587	ELTY	781,083	GDST	5,051
ADRO	146,864	DEWA	637,597	KRAS	4,900
ENRG	144,774	IPOL	301,634	ENRG	3,756
ASII	115,422	LPLI	237,160	PNIN	3,133
BORN	104,015	TRUB	168,893	IPOL	3,110
SMGR	90,890	BUMI	158,408	BORN	2,950
ITMG	85,677	TRAM	139,094	POLY	2,669
BBNI	83,342	BORN	137,281	ELTY	2,559

Code	Last	Ytd Chg(%)	H-5 Chg (%)	Rekomendasi	STO	RSI	MACD	Bollinger Band		Support			Resistance			H-5	
								Top	Bottom	1	2	3	1	2	3	Highest	Lowest
AALI	22,750	-15.11	-3.60	OverSold	39.0	42.3	94.6	24,150	22,350	22,550	22,350	21,900	23,200	23,650	23,850	24,150	22,400
ACES	2,700	-5.26	0.00	StrongSell	83.3	56.5	21.9	2,775	2,625	2,700	2,700	2,700	2,700	2,700	2,700	2,700	2,600
ADRO	2,375	-11.21	1.06	OverBought	63.2	59.8	24.3	2,425	2,325	2,325	2,275	2,250	2,400	2,425	2,475	2,400	2,250
AKRA	1,660	-2.35	-0.60	Trading	53.1	57.3	24.4	1,700	1,640	1,650	1,630	1,620	1,680	1,690	1,710	1,710	1,610
ANTM	2,100	-15.15	-5.62	Accumulate	22.2	30.4	(31.1)	2,250	2,075	2,100	2,075	2,050	2,150	2,175	2,200	2,250	2,100
ASII	58,100	6.80	-2.68	StrongBuy	13.7	52.2	879.1	62,250	55,900	57,600	57,050	56,800	58,400	58,650	59,200	62,150	57,300
BBCA	7,100	10.08	-0.70	OverSold	21.7	46.1	(19.2)	7,350	6,950	7,050	7,000	6,950	7,150	7,200	7,250	7,400	7,000
BBNI	3,775	-0.66	-3.82	StrongBuy	16.0	39.1	(24.2)	4,000	3,700	3,750	3,725	3,700	3,800	3,825	3,850	3,975	3,750
BBRI	6,150	18.84	-3.15	OverSold	22.2	48.2	46.1	6,650	5,950	6,100	6,050	6,000	6,200	6,250	6,300	6,550	6,100
BBTN	1,610	-3.59	-4.17	StrongBuy	12.0	38.9	(15.3)	1,690	1,580	1,600	1,580	1,570	1,630	1,640	1,660	1,690	1,590
BDMN	5,850	6.36	-4.10	StrongBuy	16.7	31.6	(110.5)	6,100	5,750	5,850	5,800	5,750	5,950	6,000	6,050	6,200	5,800
BISI	1,540	-17.65	-6.10	StrongBuy	9.1	38.2	(30.8)	1,620	1,510	1,530	1,520	1,500	1,560	1,580	1,590	1,650	1,540
BMRI	6,950	7.75	-2.11	OverSold	28.6	49.0	68.7	7,350	6,900	6,900	6,850	6,750	7,050	7,150	7,200	7,300	6,900
BSDE	910	3.41	-2.15	Trading	44.4	54.9	10.1	920	900	895	880	865	925	940	955	940	880
BTEL	375	59.57	-1.32	OverSold	36.4	52.8	0.8	378	368	369	362	359	379	382	389	385	365
BUMI	3,400	8.80	-2.86	StrongBuy	15.4	48.6	23.0	3,575	3,250	3,350	3,300	3,250	3,450	3,500	3,550	3,550	3,325
CTRA	410	17.14	-3.53	OverSold	36.4	58.3	8.9	416	396	394	377	364	424	437	454	425	390
ELTY	163	1.24	-8.43	StrongBuy	18.8	57.5	6.7	177	155	160	157	153	167	171	174	182	159
EXCL	6,400	21.90	-3.76	OverSold	20.9	54.7	98.2	6,550	6,300	6,300	6,200	6,150	6,450	6,500	6,600	7,000	6,200
GGRM	43,500	5.97	-2.36	OverSold	35.0	62.3	707.4	44,200	43,100	43,400	43,250	43,050	43,750	43,950	44,100	44,900	42,850
HEXA	6,300	-13.10	0.80	OverSold	22.2	52.9	149.8	6,800	6,100	6,250	6,200	6,100	6,400	6,500	6,550	6,850	6,250
INCO	4,800	-3.52	0.00	OverSold	28.6	46.2	(1.6)	4,950	4,775	4,775	4,750	4,700	4,850	4,900	4,925	4,950	4,775
INDF	5,350	8.08	-6.14	OverSold	20.0	42.6	6.9	5,750	5,100	5,300	5,200	5,150	5,450	5,500	5,600	5,750	5,250
INDY	4,100	-19.61	-1.80	OverSold	30.3	51.8	11.3	4,225	3,925	4,025	3,925	3,875	4,175	4,225	4,325	4,200	3,950
INTP	16,950	5.61	3.04	OverBought	70.6	55.3	88.8	17,400	16,650	16,850	16,700	16,600	17,100	17,200	17,350	17,250	16,350
ISAT	5,250	-3.67	-0.94	Trading	45.5	47.6	(7.3)	5,400	5,200	5,200	5,150	5,100	5,300	5,350	5,400	5,350	5,150
ITMG	46,650	-14.09	2.64	OverBought	69.2	47.7	(357.0)	47,200	46,150	46,500	46,300	46,100	46,900	47,100	47,300	47,200	44,700
JSMR	3,450	-2.82	-0.72	OverSold	33.3	58.0	25.7	3,500	3,400	3,400	3,350	3,325	3,475	3,500	3,550	3,525	3,375
KLBF	3,375	1.50	-4.93	OverSold	35.6	44.4	(19.5)	3,550	3,250	3,350	3,325	3,300	3,400	3,425	3,450	3,600	3,225
LSIP	2,375	-6.50	-1.04	Trading	47.1	48.9	(0.1)	2,425	2,350	2,350	2,325	2,300	2,400	2,425	2,450	2,450	2,300
MYOR	12,200	12.96	2.95	Trading	59.0	66.7	217.4	12,450	11,700	12,150	12,100	12,050	12,250	12,300	12,350	12,300	11,700
PGAS	4,000	-10.61	0.63	Trading	43.8	48.9	0.5	4,050	3,900	3,975	3,950	3,925	4,025	4,050	4,075	4,025	3,900
PTBA	21,200	-11.48	1.44	OverBought	73.5	44.3	(215.7)	21,400	20,900	21,100	20,950	20,850	21,350	21,450	21,600	21,300	20,750
RALS	770	-10.47	0.00	Trading Sell	58.3	54.3	(2.5)	775	745	20,870	20,870	20,870	20,870	20,870	20,870	780	730
SGRO	3,375	3.85	-2.88	StrongBuy	5.6	52.2	42.7	3,500	3,325	3,375	3,350	3,325	3,425	3,450	3,475	3,525	3,375
SMCB	2,100	-5.62	-1.18	OverSold	38.9	47.6	(6.5)	2,200	2,025	2,075	2,050	2,025	2,125	2,150	2,175	2,175	2,025
SMGR	9,700	-1.52	2.65	TakeProfit	72.4	62.3	71.1	9,800	9,600	9,650	9,550	9,500	9,800	9,850	9,950	9,800	9,300
SMRA	1,090	0.93	-2.68	Accumulate	20.0	40.0	(13.7)	1,130	1,070	1,090	1,080	1,070	1,110	1,120	1,130	1,130	1,080
TINS	2,600	-8.77	-3.70	Accumulate	22.2	38.2	(33.9)	2,725	2,550	2,575	2,550	2,525	2,625	2,650	2,675	2,725	2,575
TLKM	7,700	-3.75	-0.65	Trading	47.1	59.3	80.4	7,750	7,550	7,650	7,600	7,550	7,750	7,800	7,850	7,800	7,500
UNTR	22,000	-9.47	-2.22	OverSold	35.0	47.1	41.2	22,300	21,900	21,900	21,750	21,600	22,200	22,350	22,500	22,700	21,700
UNVR	14,800	-7.79	-0.67	Accumulate	23.1	35.5	(117.2)	15,050	14,700	14,750	14,650	14,550	14,950	15,050	15,150	15,150	14,750

S1 = Support 1 S2 = Support 2 S3 = Support 3
 R1 = Resisten 1 R2 = Resisten 2 R2 = Resisten 2
 STO = Stochastic Oscillator
 RSI = Relative Strength Index
 MACD = Moving Average Convergence Divergence
 H-5 = 5 hari sebelumnya

RESEARCH TEAM

Andrian Tanuwijaya	Equity Analyst	(andrian.tanuwijaya@trimegah.com)
Hanel Topada Era Tania	Equity Analyst	(hanel.tania@trimegah.com)
T Heldy Arifien	Technical Analyst	(heldy@trimegah.com)
Rovandi	Research Assistant	(rovandi@trimegah.com)

EQUITY CAPITAL MARKET TEAM

Nathanael Benny Prasetyo	Head of Retail ECM	(benny.prasetyo@trimegah.com)
Windra Djulnaily	Pluit, Jakarta	(windra.djulnaily@trimegah.com)
Ariawan Anwar	Artha Graha, Jakarta	(ariawan.anwar@trimegah.com)
Ferry Zabur	Kelapa Gading, Jakarta	(ferry.zabur@trimegah.com)
Wirjawan Joesoef	Mangga Dua, Jakarta	(iwan@trimegah.com)
Lukman Abdul Azis	Kebon Jeruk, Jakarta	(lukman@trimegah.com)
Tutik Suciati	Semarang, Jawa Tengah	(tuty.s@trimegah.com)
Sonny Muljadi	Surabaya, Jawa Timur	(sonny.muljadi@trimegah.com)
Ni Luh Ketut Sri Agustini	Denpasar, Bali	(sri.agustini@trimegah.com)
Philip Fernando Suwandi	Makassar, Sulawesi Selatan	(philip.fs@trimegah.com)
agus.jatmiko	Balikpapan, Kalimantan Timur	(agus.jatmiko@trimegah.com)
Asep Saepudin	Bandung, Jawa Barat	(asep.saepudin@trimegah.com)
Asep Saepudin	Cirebon, Jawa Barat	(asep.saepudin@trimegah.com)
Very Wijaya	Medan, Sumatera Utara	(very.wijaya@trimegah.com)
Tantie Rivi Watie	Pekanbaru, Riau	(tantierw@trimegah.com)
Agus Bambang Suseno	Solo, Jawa Tengah	(agus.suseno@trimegah.com)
Agus Bambang Suseno	Yogyakarta, Jawa Tengah	(agus.suseno@trimegah.com)
Donny Kristanto Setiadi	Palembang, Sumatra Selatan	(donny.kristanto@trimegah.com)
Sonny Muljadi	Malang, Jawa Timur	(sonny.muljadi@trimegah.com)

PT Trimegah Securities Tbk
18th Fl, Artha Graha Building
Jl. Jend. Sudirman Kav. 52-53
Jakarta 12190, INDONESIA
Tel : (6221) 2924 9088 Fax : (6221) 2924 9163

DISCLAIMER

This report has been prepared by PT Trimegah Securities Tbk on behalf of itself and its affiliated companies and is provided for information purposes only. Under no circumstances is it to be used or considered as an offer to sell, or a solicitation of any offer to buy. This report has been produced independently and the forecasts, opinions and expectations contained herein are entirely those of Trimegah Securities.

While all reasonable care has been taken to ensure that information contained herein is not untrue or misleading at the time of publication, Trimegah Securities makes no representation as to its accuracy or completeness and it should not be relied upon as such. This report is provided solely for the information of clients of Trimegah Securities who are expected to make their own investment decisions without reliance on this report. Neither Trimegah Securities nor any officer or employee of Trimegah Securities accept any liability whatsoever for any direct or consequential loss arising from any use of this report or its contents. Trimegah Securities and/or persons connected with it may have acted upon or used the information herein contained, or the research or analysis on which it is based, before publication. Trimegah Securities may in future participate in an offering of the company's equity securities.