

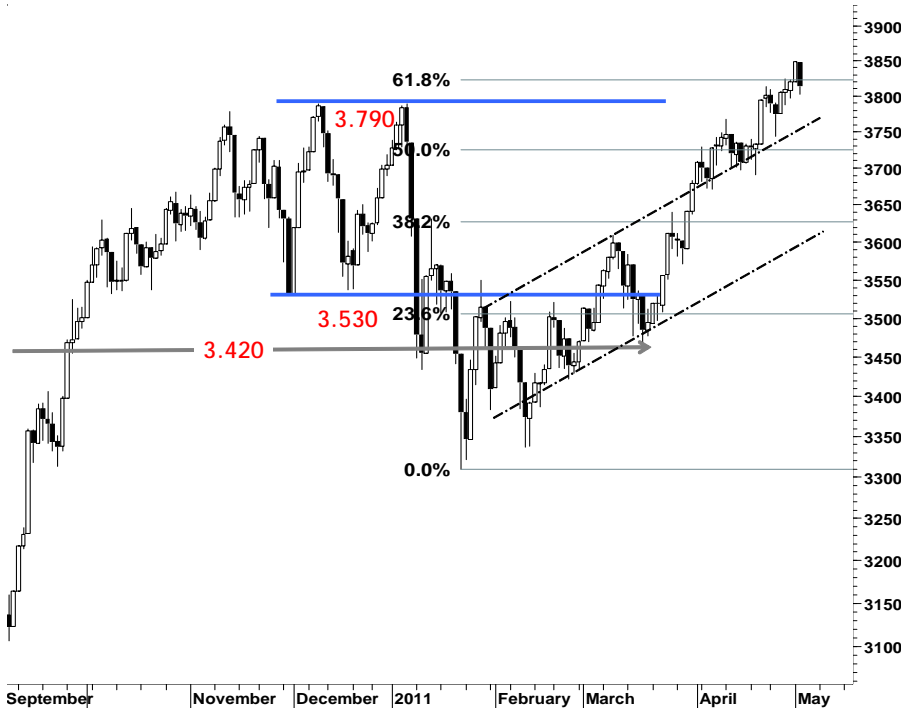
IHSG

3.813,9

35,4

0,92%

Ulisan Pasar



Mengakhiri sesi perdagangan hari Selasa kemarin, IHSG ditutup melemah dan terkoreksi sebesar 0,9% di level 3.813. Aksi profit taking serta tekanan jual terhadap saham-saham unggulan, mengakibatkan IHSG gagal untuk melanjutkan rally penguatan yang terakumulasi selama 4 hari berturut-turut. Sekalipun para investor asing membukukan nilai akumulasi pembelian bersih sebesar Rp165miliar serta terjadi peningkatan rasio volume perdagangan yang tercatat naik 7,9%, tidak mampu menahan gempuran aksi jual yang menekan pergerakan IHSG gagal bertahan pada retracement support 62% di level 3.825.

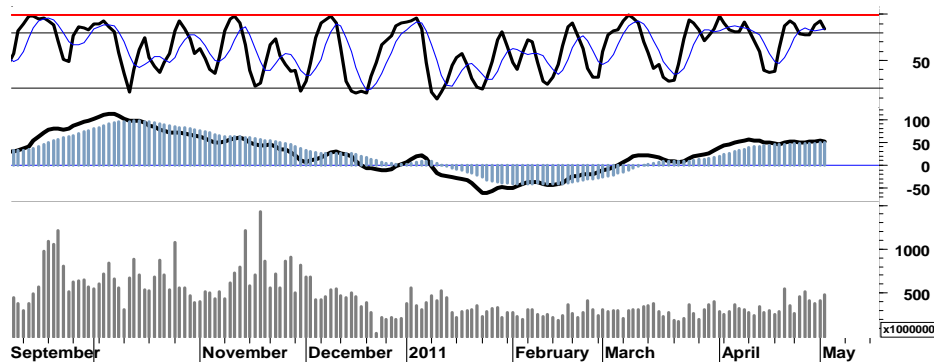
Melemahnya distribusi harga serta indikasi dead-cross pada stochastic oscillator, merupakan salah satu katalis negatif yang menandakan pergerakan IHSG hari ini akan dibayang-bayangi oleh tekanan jual lanjutan.

Sekalipun IHSG mencoba bertahan dalam interval harga 3.800, namun demikian, di

harapkan para investor memperketat stop-loss harga pada basis support 3.750.

Secara umum, IHSG masih berada pada kondisi bullish serta masih terbuka peluang untuk melanjutkan perjalanan menuju area 4.000.

Kami perkirakan, IHSG pada perdagangan hari ini akan mencoba bertahan dalam interval pergerakan harga 3.775 - 3.840.



S1	S2	R1	R2
3,800	3,780	3,840	3,865

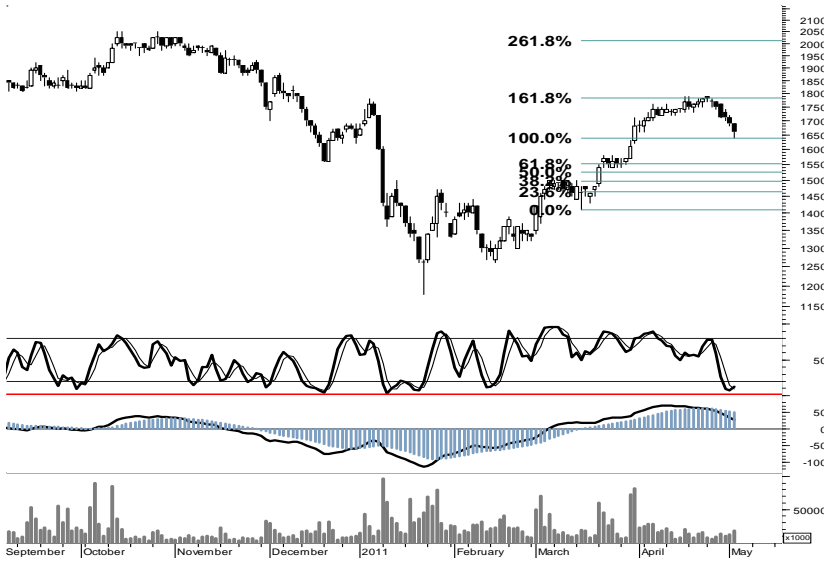
## Saham Pilihan

Saham	Harga (Rp)	Rekomendasi	Stochastic	RSI	BB Top	BB Bottom	S1	S2	R1	R2
BBTN	1,660	StrongBuy	12.50	44.22	1,780	1,660	1,640	1,620	1,720	1,740
BSDE	910	OverSold	31.82	64.45	945	895	890	865	945	970
INCO	4,875	TradingBuy	24.00	47.55	5,075	4,925	4,850	4,825	4,925	4,950
INTP	16,950	TradingBuy	22.73	55.85	17,250	17,000	16,800	16,650	17,150	17,300
PGAS	4,125	StrongSell	85.00	66.80	4,125	3,950	4,100	4,050	4,200	4,250
SGRO	3,525	StrongSell	89.19	73.04	3,625	3,150	3,475	3,425	3,675	3,725

BBTN

1,660

StrongBuy



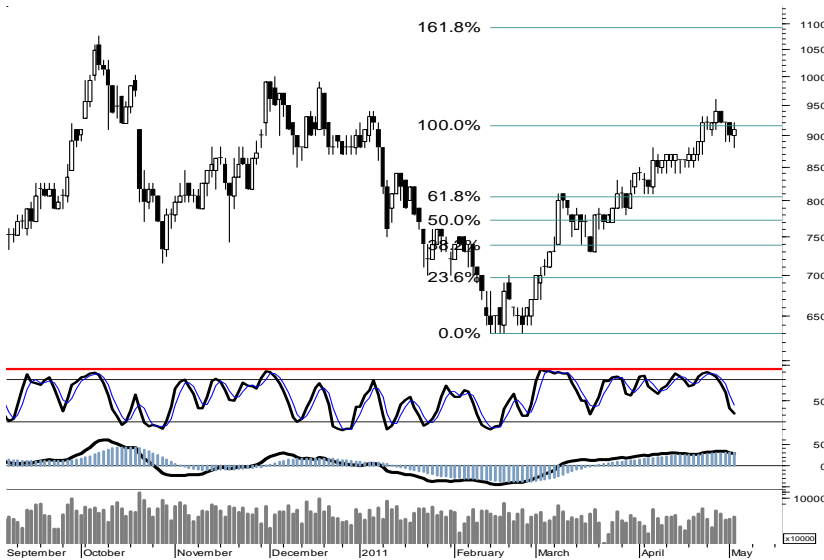
Signal positif stochastic serta peningkatan rasio volume perdagangan diharapkan mampu memberikan ruang pergerakan dalam interval harga 1.640 - 1.730.

S1	S2	R1	R2
1,640	1,620	1,720	1,740

BSDE

910

OverSold



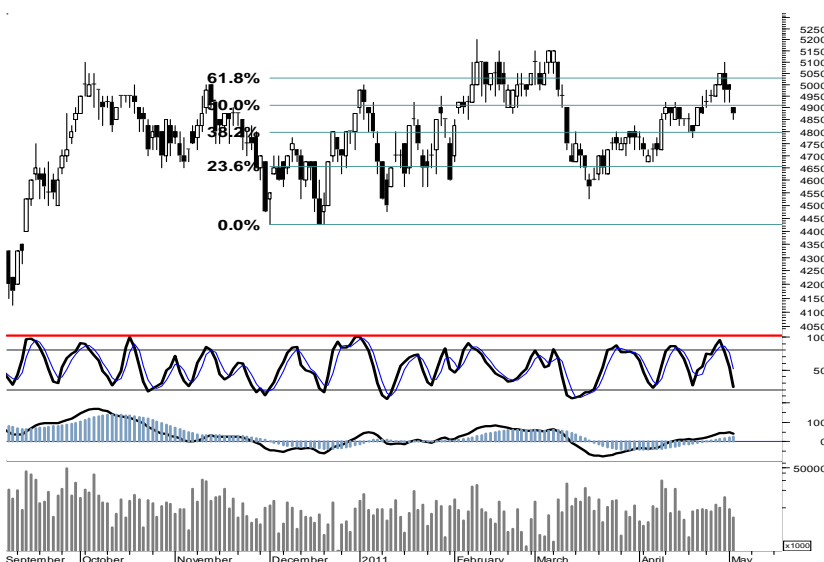
Terbatasnya ruang pelemahan serta kondisi berimbang pada area oversold, membuka peluang bagi BSDE untuk menguji penetrasi resistensi 910-920.

S1	S2	R1	R2
890	865	945	970

INCO

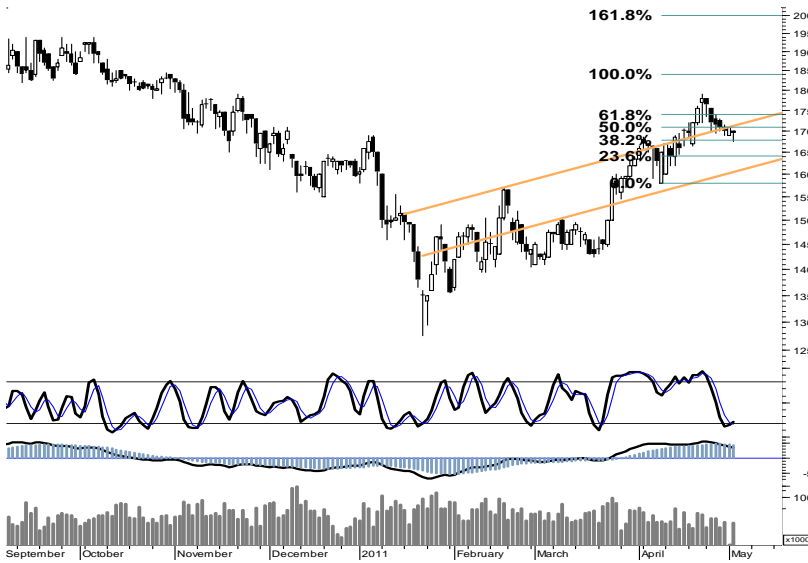
4,875

TradingBuy



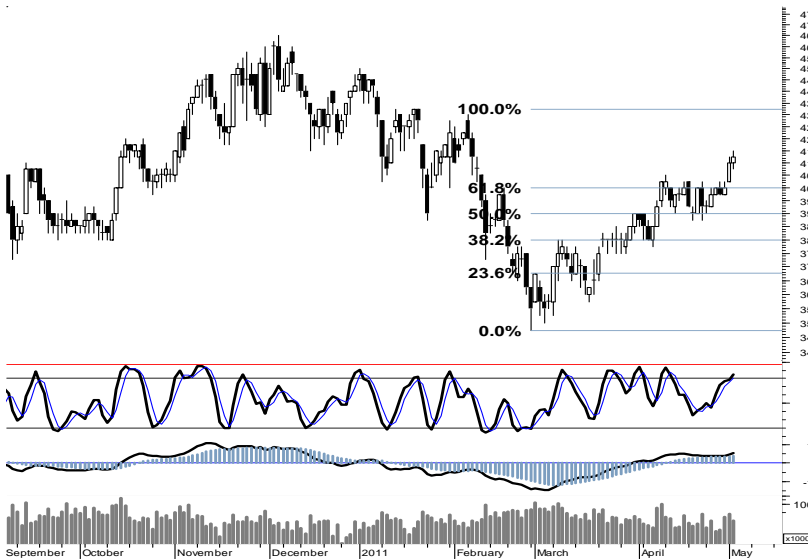
Terpuruk pada area support pivot 4.875, meninggalkan celah harga tipis (4.900 - 4.925). Menyempitnya ruang pelemahan serta celah harga, mengindikasikan INCO berpotensi untuk menguji resistensi celah harga 4.900 - 4.925.

S1	S2	R1	R2
4,850	4,825	4,925	4,950



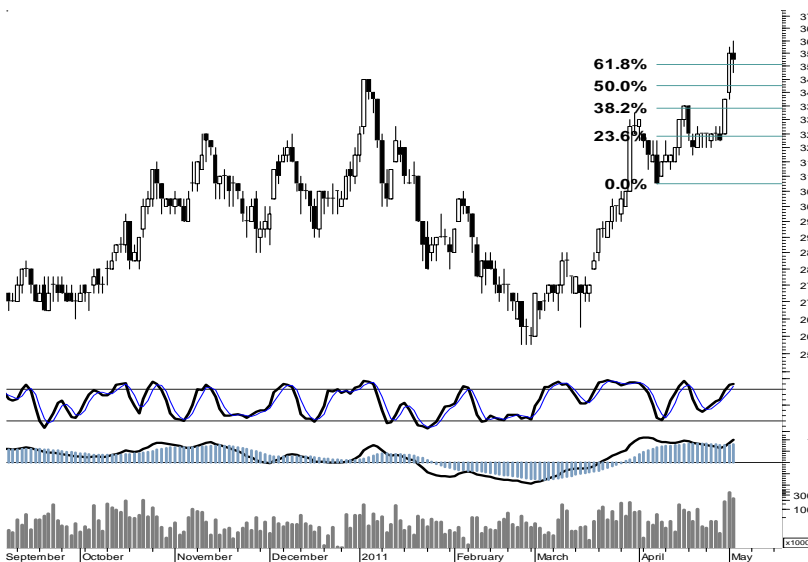
Hammer dan signal positif golden cross stochastic, membuka peluang bagi INTP untuk bergerak positif dalam interval harga 16.800 - 17.150.

S1	S2	R1	R2
16,800	16,650	17,150	17,300



Signal positif leading indicator, diharapkan mampu mendorong PGAS untuk bergerak menguji resistensi harga 4.200.

S1	S2	R1	R2
4,100	4,050	4,200	4,250



Pelemahan signal fast moving oscillator pada area overbought. mengindikasikan pergerakan harga SGRO akan dibayang-bayangi oleh aksi jual pada perdagangan hari ini.

Waspadai potensi pelemahan harga menguji support 3.425.

S1	S2	R1	R2
3,475	3,425	3,675	3,725

## TRADE DATA

### JCI (IHSG) 3,813.9 -35.4 -0.92%

YTD (Rp)	3.0%	Volume (m) :	5,064
YTD (USD)	8.1%	Nilai (Rpbn) :	3,824
Moving Avg 20day	3,762	Mkt Cap (Rptr) :	3,399
Moving Avg 50day	3,635	Market P/E (x) :	16.4
Moving Avg 200day	3,482	Market Div. Yield (%) :	2.4

### Indonesia & Sectors +/- (%) YTD (%)

MSCI Indonesia	4752.77	-44.2	-0.92	4.54
JII	528.20	-3.9	-0.74	-0.88
LQ45	681.06	-6.3	-0.92	2.98
JAKFIN Index	509.28	-10.4	-0.02	9.13
JAKINFR Index	802.36	-3.0	-0.00	-2.06
JAKMINE Index	3252.35	-24.9	-0.01	-0.67
JAKCONS Index	1118.96	-1.9	-0.00	2.22
JAKTRAD Index	495.37	-0.9	-0.00	4.49
JAKMIND Index	1009.51	-7.3	-0.01	4.39
JAKBIND Index	397.70	-3.2	-0.01	2.70
JAKPROP Index	206.89	-1.8	-0.01	1.87
JAKAGRI Index	2233.24	-16.1	-0.01	-2.24

### Commodities +/- (%) YTD (%)

CRB Index	365.05	-3.1	-0.85	9.69
<b>Oil &amp; Gas</b>				
Crude Oil	111.05	-2.5	-2.18	21.53
Natural Gas	4.67	-0.0	-0.49	6.02
COAL (Rotterdam)	127.90	-0.5	-0.43	-2.66
COAL (Amsterdam)	129.00	0.3	0.19	2.42
COAL (Australia,wk)	122.80	0.0	0.00	0.33
<b>Industrial Metals</b>				
Aluminium	2,785.00	21.3	0.77	13.25
Nickel	27,305	455	1.69	10.32
Tin	32,300	250	0.78	20.07
<b>Precious Metal</b>				
Gold	1,540.40	-16.7	-1.07	8.37
Silver	42.59	-3.5	-7.59	37.77
<b>Soft Commodities</b>				
CPO (Malaysia)	3,312.00	-58.0	-1.72	-13.16
CPO (Netherlands)	1,142.50	-27.5	-2.35	-11.09
Rubber	5,226.09	18.0	0.35	4.65
Corn	723.75	-10.8	-1.46	15.06
Wheat	793.25	1.5	0.19	-0.13
Soybeans	1,363.75	-29.3	-2.10	-2.15
Rice (Indonesia)	6,600.00	0.0	0.00	-7.04

### Winners

Stock	Price	(%)	Stock	Price	(%)
ADMG	315	23.53	MEGA	3,450	-9.21
DUTI	2,125	12.43	EXCL	6,500	-3.70
TSPC	2,025	8.87	BBCA	7,250	-3.33
TOWR	11,000	4.76	BNII	620	-3.13
MYOR	11,750	3.07	BBNI	3,975	-2.45
ISAT	5,400	0.93	INCO	4,875	-2.01
BUMI	3,475	0.72	BBRI	6,450	-1.53
GGRM	40,950	0.61	ASII	56,150	-0.88
PGAS	4,125	0.61	BMRI	7,300	-0.68
UNTR	23,450	0.43	TLKM	7,700	-0.65

### Losers

### Regional Indices +/- (%) YTD (%)

MXWO	MSCI Word	1,383.0	-8.9	-0.64	8.04
SPX	S&P 500	1,356.6	-4.6	-0.34	7.87
<b>US</b>					
Dow Jones Industrial		12,807.5	0.1	0.00	10.62
Nasdaq	US	2,841.6	-22.5	-0.78	7.11
<b>Europe</b>					
EURO 50	Europe	282.4	-1.5	-0.53	2.40
FTSE	London	6,082.9	13.0	0.21	3.10
DAX	German	7,500.7	-26.9	-0.36	8.48
CAC	France	4,096.8	-11.9	-0.29	7.68
SMI	Swiss	6,510.6	-34.1	-0.52	1.16
<b>BRIC</b>					
BOVESPA	Brazil	64,318.2	-1,144.6	-1.75	-7.20
MICEX	Russia	1,691.5	-50.4	-2.89	0.20
SENSEX	India	18,534.7	-463.3	-2.44	-9.63
NIFTY	India	5,565.3	-136.1	-2.39	-9.28
SHCOMP	China	2,932.2	20.7	0.71	4.42
SZCOMP	China	1,214.1	13.5	1.12	-5.95

### Developed ASIA

Nikkei	Japan	10,004.2	0.0	0.00	-2.20
TPX	Japan	865.6	0.0	0.00	-3.70
HIS	Hong kong	23,633.3	-87.6	-0.37	2.60
KOSPI	S. Korea	2,200.7	-28.2	-1.27	7.30
TAIEX	Taiwan	8,946.1	-61.8	-0.69	-0.29
FSSTI	Singapore	3,153.6	-26.3	-0.83	-1.14

### ASEAN

SET	Thailand	1,070.4	-23.1	-2.12	3.65
PCOMP	Philippines	4,319.4	-7.4	-0.17	2.81
KLCI	Malaysia	1,531.5	-3.5	-0.23	0.83
VNINDEX	Vietnam	480.1	0.0	0.00	-0.94

### Currency +/- (%) YTD (%)

EURUSD	Euro	1.483	-0.001	-0.03	10.77
GBPUSD	United Kingdom	1.649	-0.017	-1.01	5.60
USDCHF	Switzerland	0.861	-0.004	-0.45	-7.90
USDCAD	Canada	0.953	0.002	0.21	-4.55
AUDUSD	Australia	1.085	-0.010	-0.90	5.98
NZDUSD	New Zealand	0.799	-0.008	-0.95	2.37
USDJPY	Japan	80.9	-0.280	-0.34	-0.22
USDCNY	China	6.497	0.004	0.07	-1.67
USDHKD	Hongkong	7.765	-0.001	-0.01	-0.10
USDSGD	Singapore	1.228	0.005	0.42	-4.29
Rupiah	Indonesia	8,546.0	3.000	0.04	-5.00

### Value

Value (Rpbn)	Volume (Lot)	Freq (x)
BUMI 213,489	ENRG 1,434,247	MLPL 8,162
BMRI 156,967	DEWA 1,192,301	KIAS 4,504
ASII 145,353	SIPD 746,862	DEWA 3,459
ADRO 120,844	BNBR 496,689	ENRG 3,217
ENRG 120,345	TRUB 447,223	CPIN 2,664
BBRI 112,008	ELTY 349,887	MNCN 2,507
PGAS 107,824	KIAS 308,826	SIPD 2,199
DOID 89,955	MLPL 196,702	ADRO 2,145
BDMN 83,946	DOID 145,718	TRUB 1,942
SGRO 81,489	LPKR 125,685	BBRI 1,685

Code	Last	Ytd Chg(%)	H-5 Chg (%)	Rekomendasi	STO	RSI	MACD	Bollinger Band		Support			Resistance			H-5	
								Top	Bottom	1	2	3	1	2	3	Highest	Lowest
AALI	23,950	-10.63	4.36	StrongSell	91.7	68.5	264.7	24,200	22,650	23,850	23,750	23,600	24,100	24,250	24,350	24,000	22,700
ACES	2,650	-7.02	1.92	Trading	53.8	59.1	22.9	2,700	2,625	2,650	2,625	2,625	2,675	2,675	2,700	2,700	2,575
ADRO	2,225	-16.82	0.00	TradingSell	33.3	44.1	(25.2)	2,250	2,200	2,200	2,175	2,150	2,250	2,275	2,300	2,250	2,200
AKRA	1,660	-2.35	-0.60	TakeProfit	69.4	62.8	43.4	1,730	1,660	1,640	1,620	1,600	1,680	1,700	1,720	1,720	1,560
ANTM	2,250	-9.09	0.00	Trading	42.9	42.6	(1.5)	2,325	2,250	2,225	2,200	2,175	2,275	2,300	2,325	2,300	2,250
ASII	56,150	3.22	3.79	StrongSell	90.1	53.0	33.8	57,700	54,200	55,950	55,750	55,500	56,400	56,650	56,850	56,700	53,750
BBCA	7,250	12.40	-3.97	Trading	22.2	51.5	143.9	7,650	7,400	7,200	7,100	6,950	7,450	7,600	7,700	7,650	7,350
BBNI	3,975	4.61	-3.05	StrongBuy	17.6	51.2	58.6	4,125	4,025	3,950	3,925	3,875	4,025	4,075	4,100	4,175	4,025
BBRI	6,450	24.64	0.00	TakeProfit	61.1	64.6	248.8	6,650	6,450	6,400	6,300	6,250	6,550	6,600	6,700	6,600	6,300
BBTN	1,660	-0.60	-6.21	StrongBuy	12.5	44.2	26.1	1,780	1,660	1,640	1,620	1,590	1,690	1,720	1,740	1,790	1,680
BDMN	6,100	10.91	-3.17	Trading	31.3	33.9	(73.4)	6,300	6,150	6,050	6,000	5,900	6,200	6,300	6,350	6,350	6,100
BISI	1,630	-12.83	-4.12	StrongBuy	11.6	42.4	16.6	1,710	1,650	1,620	1,610	1,590	1,650	1,670	1,680	1,820	1,640
BMRI	7,300	13.18	4.29	StrongSell	87.0	67.0	204.0	7,450	6,950	7,250	7,150	7,100	7,400	7,450	7,550	7,350	6,900
BSDE	910	3.41	-1.09	OverSold	31.8	64.5	29.2	945	895	890	865	850	930	945	970	960	890
BTEL	385	63.83	0.00	StrongSell	100.0	73.9	12.1	385	385	379	372	369	389	392	399	385	375
BUMI	3,475	11.20	4.51	StrongSell	95.2	67.4	63.3	3,525	3,300	3,425	3,375	3,350	3,500	3,525	3,575	3,450	3,275
CTRA	380	8.57	1.33	Trading	46.7	53.1	8.0	404	377	375	370	365	385	390	395	400	375
ELTY	144	-10.56	1.41	OverBought	65.5	57.5	1.0	148	143	143	142	140	146	148	149	148	137
EXCL	6,500	23.81	1.56	Trading	49.0	61.7	253.9	7,050	6,450	6,400	6,250	6,000	6,800	7,050	7,200	7,100	6,200
GGRM	40,950	-0.24	1.24	OverBought	60.0	55.0	37.2	40,850	40,200	40,550	40,150	39,800	41,300	41,650	42,050	41,450	40,100
HEXA	5,600	-22.76	-2.61	Accumulate	27.3	38.5	(134.8)	5,750	5,600	5,550	5,500	5,450	5,650	5,700	5,750	5,800	5,600
INCO	4,875	-2.01	-1.52	TradingBuy	24.0	47.6	34.4	5,075	4,925	4,850	4,825	4,800	4,900	4,925	4,950	5,100	4,900
INDF	5,500	11.11	-2.65	TradingBuy	27.3	57.4	108.1	5,700	5,550	5,500	5,450	5,400	5,600	5,650	5,700	5,700	5,500
INDY	4,075	-20.10	1.24	OverBought	77.8	56.0	16.1	4,100	4,025	4,050	4,025	4,000	4,100	4,125	4,150	4,100	3,925
INTP	16,950	5.61	-1.45	TradingBuy	22.7	55.8	359.6	17,250	17,000	16,800	16,650	16,550	17,050	17,150	17,300	17,800	16,900
ISAT	5,400	-0.92	2.86	OverBought	76.5	56.5	31.7	5,450	5,200	5,300	5,200	5,100	5,500	5,600	5,700	5,400	5,150
ITMG	47,150	-13.17	0.11	OverSold	37.7	47.1	(94.0)	47,350	46,800	47,000	46,800	46,600	47,400	47,600	47,800	48,000	46,500
JSMR	3,375	-4.93	0.75	OverBought	73.3	56.1	2.5	3,375	3,275	3,325	3,275	3,250	3,400	3,425	3,475	3,400	3,250
KLBF	3,600	8.27	0.00	Trading	38.5	60.2	83.6	3,625	3,575	3,575	3,550	3,525	3,625	3,650	3,675	3,675	3,550
LSIP	2,475	-2.56	4.21	StrongSell	84.2	60.2	36.9	2,575	2,350	2,450	2,425	2,375	2,525	2,575	2,600	2,525	2,350
MYOR	11,750	8.80	1.29	Trading	56.9	60.9	249.4	11,850	10,900	11,400	11,050	10,850	11,950	12,150	12,500	11,750	10,900
PGAS	4,125	-7.82	3.77	StrongSell	85.0	66.8	60.7	4,125	3,950	4,100	4,050	4,025	4,175	4,200	4,250	4,125	3,900
PTBA	22,200	-7.31	0.00	Trading	40.6	56.5	259.1	22,500	22,200	22,150	22,050	21,900	22,400	22,550	22,650	22,600	22,000
RALS	730	-15.12	-2.67	StrongBuy	13.3	37.0	(13.9)	755	730	720	705	690	750	765	780	790	730
SGRO	3,525	8.46	8.46	StrongSell	89.2	73.0	102.4	3,625	3,150	3,475	3,425	3,350	3,600	3,675	3,725	3,575	3,200
SMCB	2,225	0.00	-1.11	Trading	52.9	62.1	66.4	2,325	2,225	2,225	2,200	2,200	2,250	2,250	2,275	2,300	2,150
SMGR	9,500	-3.55	0.53	Trading	53.8	55.1	99.3	9,600	9,450	9,450	9,400	9,350	9,550	9,600	9,650	9,650	9,400
SMRA	1,220	12.96	3.39	StrongSell	81.3	60.5	40.9	1,310	1,190	1,200	1,180	1,150	1,250	1,280	1,300	1,270	1,150
TINS	2,800	-1.75	-0.88	Trading	50.0	49.8	35.8	2,925	2,825	2,775	2,750	2,725	2,825	2,850	2,875	2,900	2,800
TLKM	7,700	-3.75	3.36	StrongSell	89.5	58.8	133.2	7,900	7,500	7,650	7,550	7,500	7,800	7,850	7,950	7,750	7,400
UNTR	23,450	-3.50	2.18	TakeProfit	73.8	61.7	227.0	23,600	23,000	23,300	23,100	22,950	23,650	23,800	24,000	23,500	22,750
UNVR	15,200	-5.30	-0.33	Trading	52.9	43.0	(116.7)	15,350	15,250	15,150	15,100	15,000	15,300	15,400	15,450	15,400	15,100

S1 = Support 1      S2 = Support 2      S3 = Support 3  
 R1 = Resisten 1      R2 = Resisten 2      R2 = Resisten 2  
 STO = Stochastic Oscillator  
 RSI = Relative Strength Index  
 MACD = Moving Average Convergence Divergence  
 H-5 = 5 hari sebelumnya

## RESEARCH TEAM

---

<b>Andrian Tanuwijaya</b>	Equity Analyst	(andrian.tanuwijaya@trimegah.com)
<b>Hanel Topada Era Tania</b>	Equity Analyst	(hanel.tania@trimegah.com)
<b>T Heldy Arifien</b>	Technical Analyst	(heldy@trimegah.com)
<b>Rovandi</b>	Research Assistant	(rovandi@trimegah.com)

## EQUITY CAPITAL MARKET TEAM

---

<b>Nathanael Benny Prasetyo</b>	Head of Retail ECM	(benny.prasetyo@trimegah.com)
<b>Windra Djulnaily</b>	Pluit, Jakarta	(windra.djulnaily@trimegah.com)
<b>Ariawan Anwar</b>	Artha Graha, Jakarta	(ariawan.anwar@trimegah.com)
<b>Ferry Zabur</b>	Kelapa Gading, Jakarta	(ferry.zabur@trimegah.com)
<b>Wirjawan Joesoef</b>	Mangga Dua, Jakarta	(iwan@trimegah.com)
<b>Lukman Abdul Azis</b>	Kebon Jeruk, Jakarta	(lukman@trimegah.com)
<b>Tutik Suciati</b>	Semarang, Jawa Tengah	(tuty.s@trimegah.com)
<b>Sonny Muljadi</b>	Surabaya, Jawa Timur	(sonny.muljadi@trimegah.com)
<b>Ni Luh Ketut Sri Agustini</b>	Denpasar, Bali	(sri.agustini@trimegah.com)
<b>Philip Fernando Suwandi</b>	Makassar, Sulawesi Selatan	(philip.fs@trimegah.com)
<b>agus.jatmiko</b>	Balikpapan, Kalimantan Timur	(agus.jatmiko@trimegah.com)
<b>Asep Saepudin</b>	Bandung, Jawa Barat	(asep.saepudin@trimegah.com)
<b>Asep Saepudin</b>	Cirebon, Jawa Barat	(asep.saepudin@trimegah.com)
<b>Very Wijaya</b>	Medan, Sumatera Utara	(very.wijaya@trimegah.com)
<b>Tantie Rivi Watie</b>	Pekanbaru, Riau	(tantierw@trimegah.com)
<b>Agus Bambang Suseno</b>	Solo, Jawa Tengah	(agus.suseno@trimegah.com)
<b>Agus Bambang Suseno</b>	Yogyakarta, Jawa Tengah	(agus.suseno@trimegah.com)
<b>Donny Kristanto Setiadi</b>	Palembang, Sumatra Selatan	(donny.kristanto@trimegah.com)
<b>Sonny Muljadi</b>	Malang, Jawa Timur	(sonny.muljadi@trimegah.com)

**PT Trimegah Securities Tbk**  
18<sup>th</sup> Fl, Artha Graha Building  
Jl. Jend. Sudirman Kav. 52-53  
Jakarta 12190, INDONESIA  
Tel : (6221) 2924 9088 Fax : (6221) 2924 9163

### DISCLAIMER

This report has been prepared by PT Trimegah Securities Tbk on behalf of itself and its affiliated companies and is provided for information purposes only. Under no circumstances is it to be used or considered as an offer to sell, or a solicitation of any offer to buy. This report has been produced independently and the forecasts, opinions and expectations contained herein are entirely those of Trimegah Securities.

While all reasonable care has been taken to ensure that information contained herein is not untrue or misleading at the time of publication, Trimegah Securities makes no representation as to its accuracy or completeness and it should not be relied upon as such. This report is provided solely for the information of clients of Trimegah Securities who are expected to make their own investment decisions without reliance on this report. Neither Trimegah Securities nor any officer or employee of Trimegah Securities accept any liability whatsoever for any direct or consequential loss arising from any use of this report or its contents. Trimegah Securities and/or persons connected with it may have acted upon or used the information herein contained, or the research or analysis on which it is based, before publication. Trimegah Securities may in future participate in an offering of the company's equity securities.